

# A TOUCH OF TERRA-COTTA

Alison Irwin



Photos by Matt Graves

*little looms*  
ePATTERNS



## A TOUCH OF TERRA-COTTA

Alison Irwin

### RESOURCES

Dixon, Anne. "Baltic-Style Patterns." *The Weaver's Inkle Pattern Directory*. Loveland, CO: Interweave, 2012, 61–78.

Irwin, Alison. "A Baltic Zigzag Bag." *Handwoven*, March/April 2017, 58–59.

Schneider, Angela K. "Inkle Weaving Tips: Tucking Tails." LT.Media /TuckingTails.

### MATERIALS

**STRUCTURE** Warp-faced plain weave with pick-up.

**EQUIPMENT** Inkle loom; shuttle; pick-up stick. **Note:** Alison uses a hookless tatting shuttle and a tongue depressor.

**YARNS** **Warp:** 22/2 cottolin (60% cotton/40% linen; 3,200 yd/lb; Bockens), #2074 Turquoise, 74 yd. **Lumi** (80% cotton/18% polyester/2% other fibers; 137 yd/50 g;



Berroco), #8132 Chili, 14 yd. **Weft:** 22/2 cottolin, #2074 Turquoise, 4 yd. **OTHER SUPPLIES** Cardstock strips, 2" × ¾"; large hook and eye.

**WARP LENGTH** 57 ends 55" long (allows 1" for take-up; 46" for loom waste and sampling; loom waste includes fringe).

**SETTS** **Warp:** 51 epi. **Weft:** 13 ppi.

**DIMENSIONS** **Width:** 1½". **Woven length:** (measured under tension on the loom) 8". **Finished size:** (with closures) 1½" × 7½".

### PROJECT STEPS

**1** Wind a warp of 57 ends 55" long following the draft in Figure 1.

**2** Wind a shuttle with Turquoise.

**3** Insert a cardstock strip as a fringe spacer. Weave following the pick-up pattern chart in Figure 2, using the weft tails to secure the beginning and end of the band. Insert another fringe spacer.

**4** Weave any remaining warp with design(s) of your choice.

**5** Cut the band from the loom.

**6** Lightly steam the band.

**7** Finish the band by folding each end back ½" on the weaving, stitching the layers together, and adding a large hook and eye to the underside of the ends of the band. \*

Figure 1. Draft

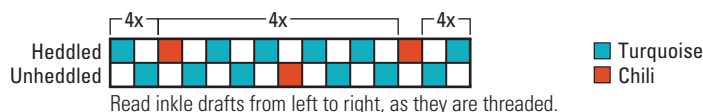
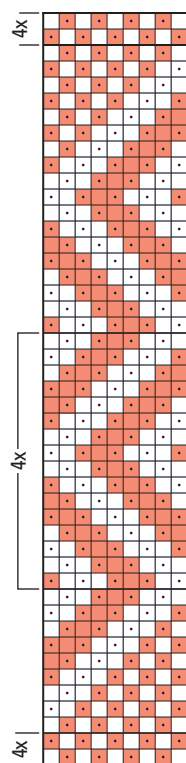


Figure 2. Pick-up chart



■ Pattern end up  
□ Pattern end down  
◻ Dot indicates pattern ends normally up in the shed.

**Note:** Charts show pattern ends only.

### Securing band ends

#### Beginning of band

1. Open the shed and weave Row 1, leaving a long tail.
  2. Change the shed and place both the weft and the tail in Row 2.
  3. Change the shed and place both the weft and the tail in Row 3. Let the weft tail hang out for trimming later.
- Continue weaving with one shot of the weft for the rest of the band.

**Note:** Rows 2 and 3 each have 2 shots of weft in them.

#### End of band

1. Insert a knotted loop in the third row from the end along with the weft, with the knot on the same side as the shuttle.
2. Change the shed, weave the second row from the end, and insert a second loop with the knot on the same side as the shuttle.
3. Change the shed and weave the last row.
4. Change the shed and insert a spacer. Cut the weft, leaving a long tail.
5. Feed a short length of the weft tail through the loop hanging from the second-to-last row. Grasp the knotted end of the loop and carefully pull the weft tail through the shed.
6. Feed a short length of the weft tail through the loop hanging from the third-to-last row. Grasp the knotted end of the loop and carefully pull the weft tail through the shed.
7. Let the weft tail hang out for trimming later.

**Note:** Rows 2 and 3 from the end will have 2 shots of weft in them.