

Invest in Happiness **PLACEMAKING SUMMIT**

Wednesday 26 February 2025 | The Haymarket Theatre, Basingstoke

Basingstoke
#InvestInHappiness

southcoastcps
property investment & development



Basingstoke
and Deane

Meet...



Hugo Denée

Co-Founder
Longstock Capital

“Wellness at the core for the Office Hotel of the future”

LONGSTOCK
CAPITAL

An aerial photograph of a city, likely Longstock, showing a mix of urban development, green spaces, and infrastructure. A large, semi-transparent yellow rectangle is centered over the image, serving as a background for the title text.

THE EVOLUTION OF PLANT

A CASE STUDY OF AN OFFICE FOR 2025

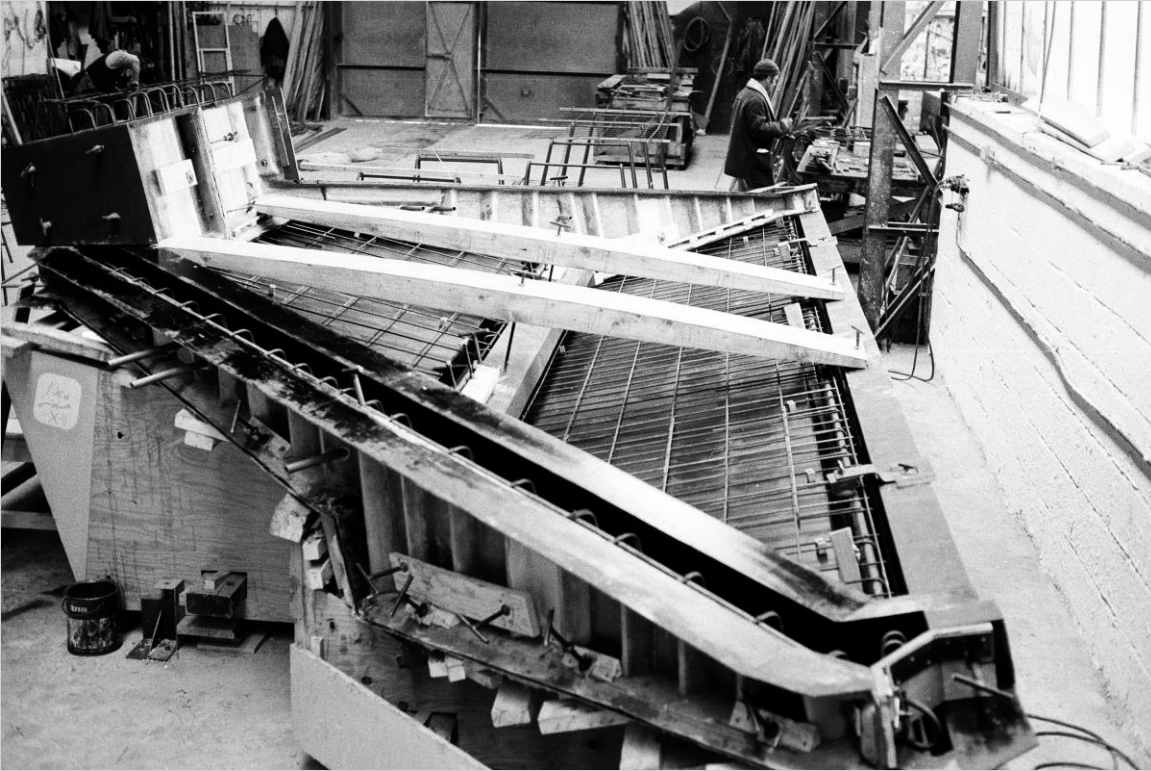
FEBRUARY 2025

LONGSTOCK

GATEWAY HOUSE – Constructed in 1976 for Wiggins Teape



GATEWAY HOUSE – Constructed in 1976 for Wiggins Teape



LONGSTOCK

GATEWAY HOUSE – Constructed in 1976 for Wiggins Teape



LONGSTOCK

GATEWAY HOUSE – Constructed in 1976 for Wiggins Teape



LONGSTOCK

GATEWAY HOUSE – Constructed in 1976 for Wiggins Teape



MOUNTBATTEN HOUSE – Purchased by IBM in 1982



MOUNTBATTEN HOUSE – Purchased by IBM in 1982



LONGSTOCK



PLANT– 2024 Refurbishment



LONGSTOCK

PLANT– 2024 Refurbishment



LONGSTOCK

PLANT– 2024 Refurbishment



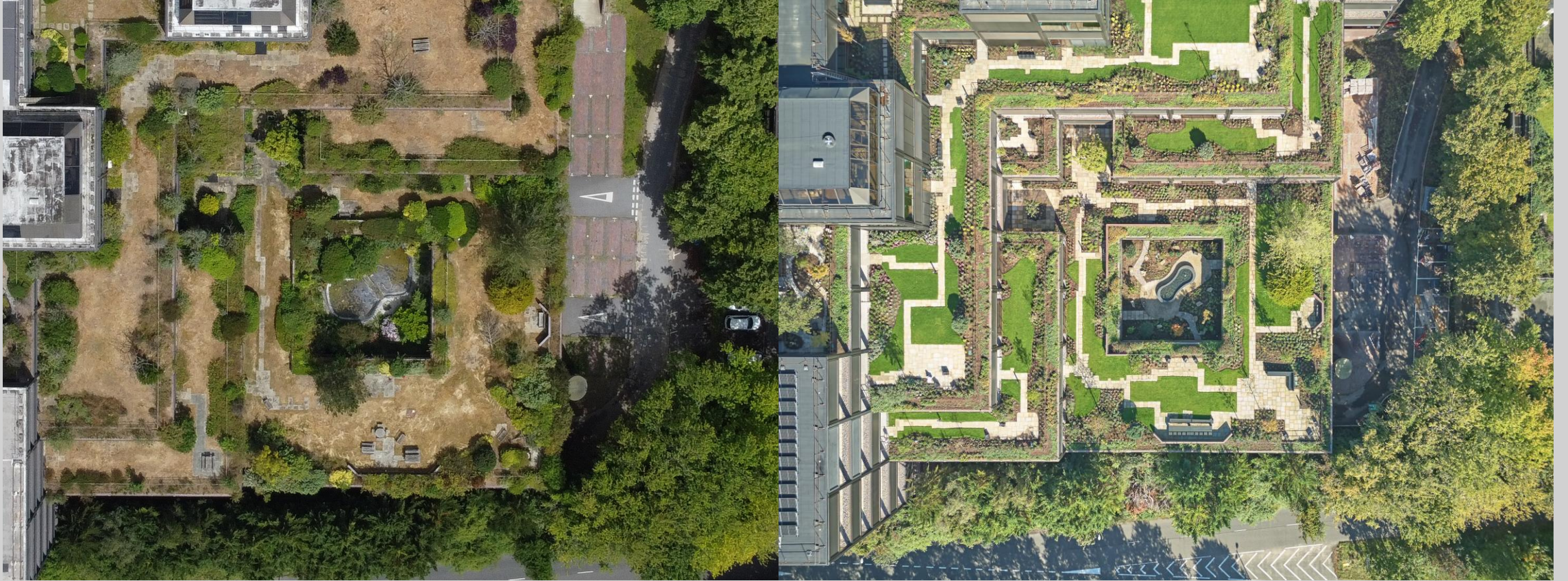
LONGSTOCK

PLANT- 2024 Refurbishment



LONGSTOCK

PLANT– 2024 Refurbishment



LONGSTOCK

PLANT- 2024 Refurbishment



LONGSTOCK

PLANT– The Reception & Communal areas



LONGSTOCK

PLANT– The Cafe



LONGSTOCK

PLANT– The Gym



LONGSTOCK

PLANT– The Gardens



LONGSTOCK

Contact

HUGO DENÉE & TRISTAN DE SOUZA

hugo@longstockcapital.com
tristan@longstockcapital.com

020 8159 3111 | 07950 349368

8 St James's Square, London, SW1Y 6BN