



# Venice Convention Centre

Lido di Venezia



# The City of Venice

## World culture capital

Venice is considered one of the capital cities of art and architecture in the world. The city is renowned nationally and internationally for its charm and its enchanting landscapes. Churches, museums and art galleries are present in every corner of the city and visitors can tailor their knowledge of the lagoon city in countless combinations. Venice is a tourist city par excellence, and over the years has perfected its ability to welcome and "pamper" its visitors.



# How to reach Venice

The “**Marco Polo**” **International Airport**, third in Italy for scheduled passengers, contributes to the centrality of Venice within Europe; every week more than a 1000 scheduled flights and 122 international destination link Venice to the main European cities.

**Treviso Airport**, approximately 20 km from Venice, is an “urban” airport, part of the Venice Airport System. It satisfies different air transport services needs with regional, low-cost, charter and private flights.

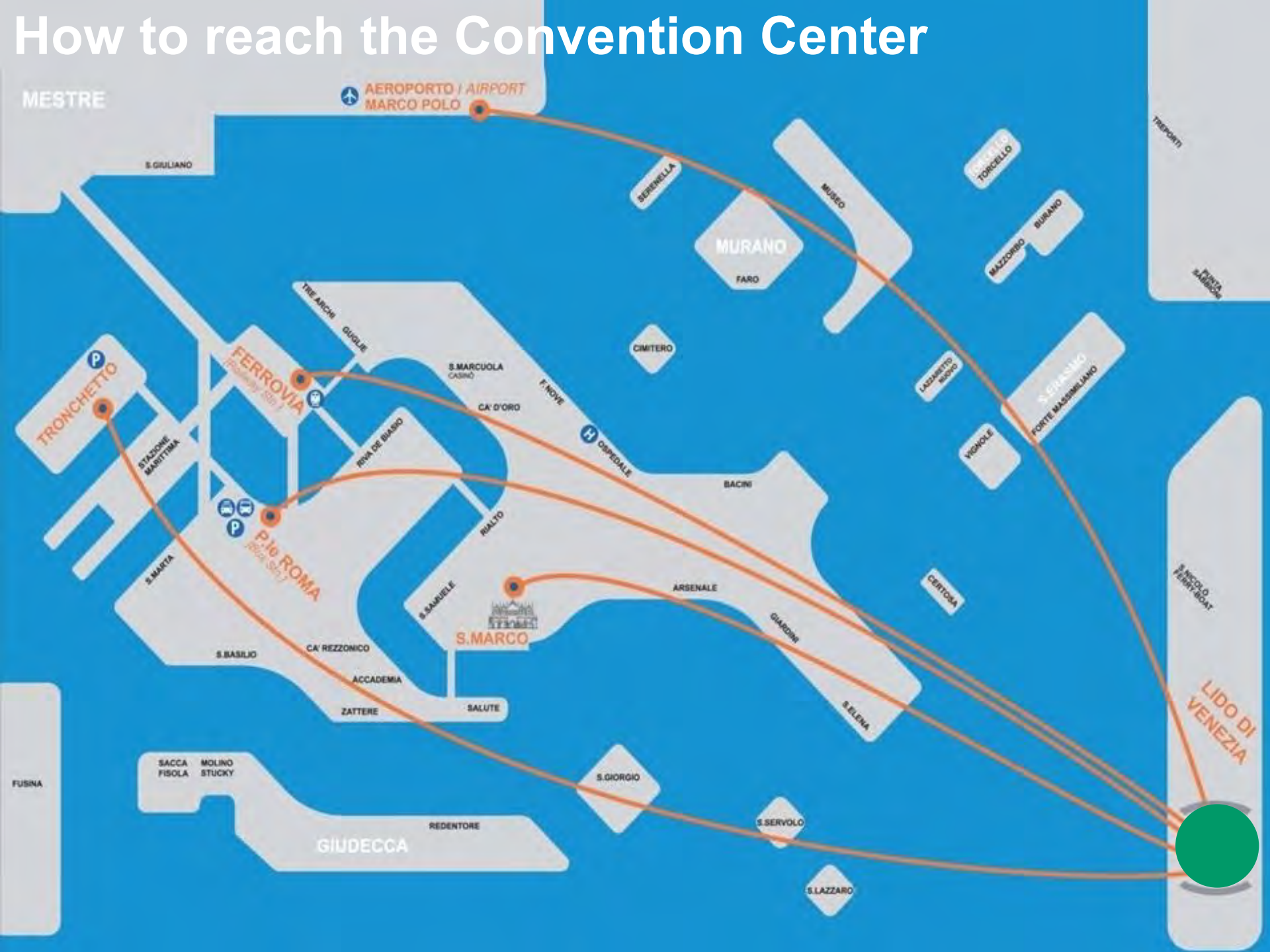
**The railway station St. Lucia** is served by a lot of direct connections, even at high speed , (Trenitalia and Italo), with the main Italian cities (Milan, Torino, Rome, Florence, Naples) and foreign (Vienna, Munich).

**The Venice car parks** (in Piazzale Roma and Tronchetto) offer over 7,000 parking spaces, and the Tronchetto tourist coach parking can accommodate 500 vehicles.





# How to reach the Convention Center



# How to reach the convention center

## From the Airport Marco Polo – Tessera

- Actv Aerobus (route n. 5) to Piazzale Roma and then take ACTV vaporetto route n.1 ( 58 minutes) or 5.1 and 6 (35 minutes)
- Alilaguna boat routes Blue and Red direct to the Lido (50 min.)

## From Piazzale Roma (car park)

ACTV Vaporetto route 1 to Lido (58 min.) or 5.1 and 6 to Lido (35 min.)

## From the Santa Lucia Railway Station

ACTV Vaporetto route 1, (55 min.) or 5.1 (40 min.) or 5.2 (45 min.)

## From Tronchetto (car and tourist coaches park)

ACTV route 2 to San Zaccaria (28 min.) then from here route 1 or 5.1 to Lido ( 17 min.)

If you arrive **by car or vans or truck** you can take the Ferry Boat route 17 (35 min.) useful above all for fitters

ACTV public transport info: [www.actv.it](http://www.actv.it)





# Hospitality

Delegates will find any category of **accommodation** in Venice. The choice ranges from luxury hotels 5\* in former palais, international and hotel chains, but also a family-run establishments through to small, quaint guest houses.

Vela offers dedicated transfer service from Hotel to the Convention Center.

## LIDO DI VENEZIA



MARE ADRIATICO/ ADRIATIC SEA

# Entertainment at Lido

Lido Island offers a long stretch of fine **golden sand**, with typical refreshment huts and booths.

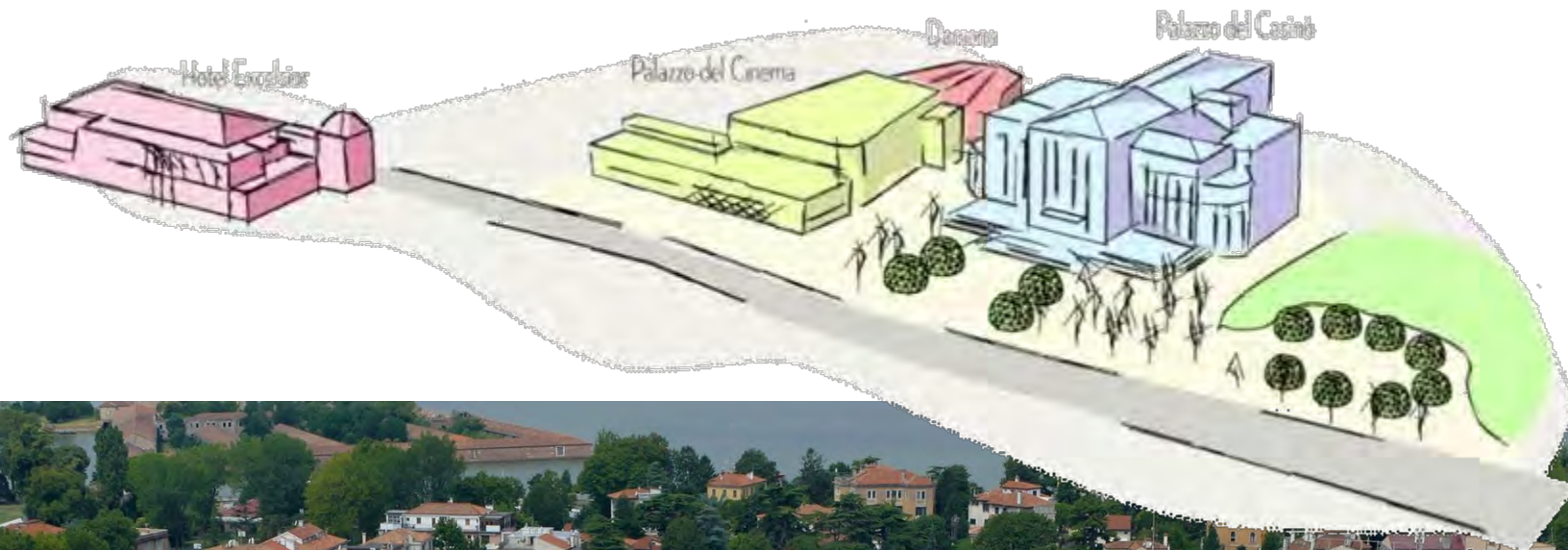
Lido is also home to one of the 10 most beautiful 18-hole **golf clubs** in Italy, offering enchanting views.

In addition, other **sports** can be practiced in specialised centres, such as horse riding, sailing, cycling, archery, tennis, soccer and 5-a-side football, volleyball, basketball, rugby, swimming, rowing, skating and martial arts.



# The Convention Center







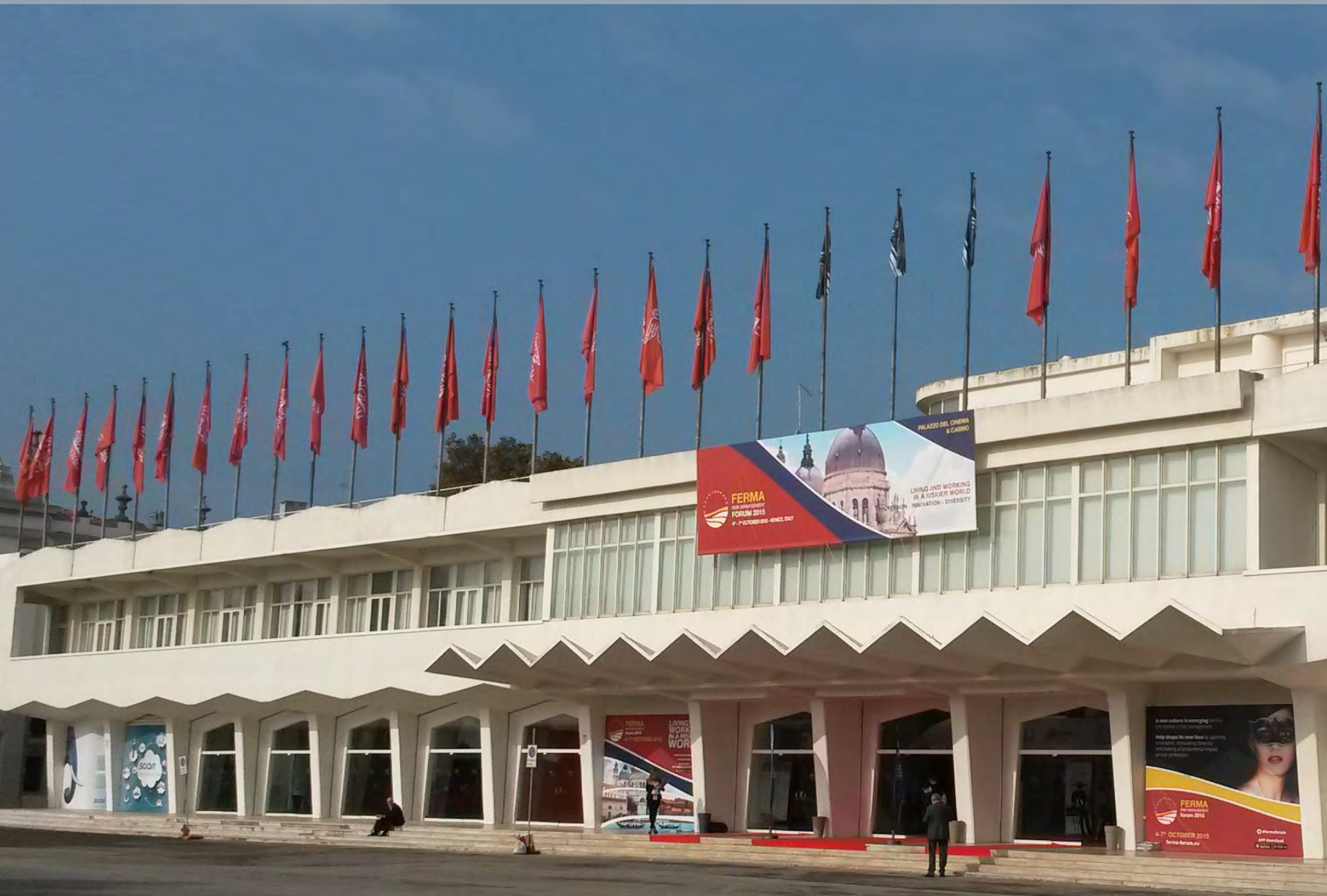
# Palazzo del Cinema

This is where the first Film Festival was held and it is still today the most prestigious the World. An international catwalk for actors and film directors, meeting place for production studios and cinema buffs





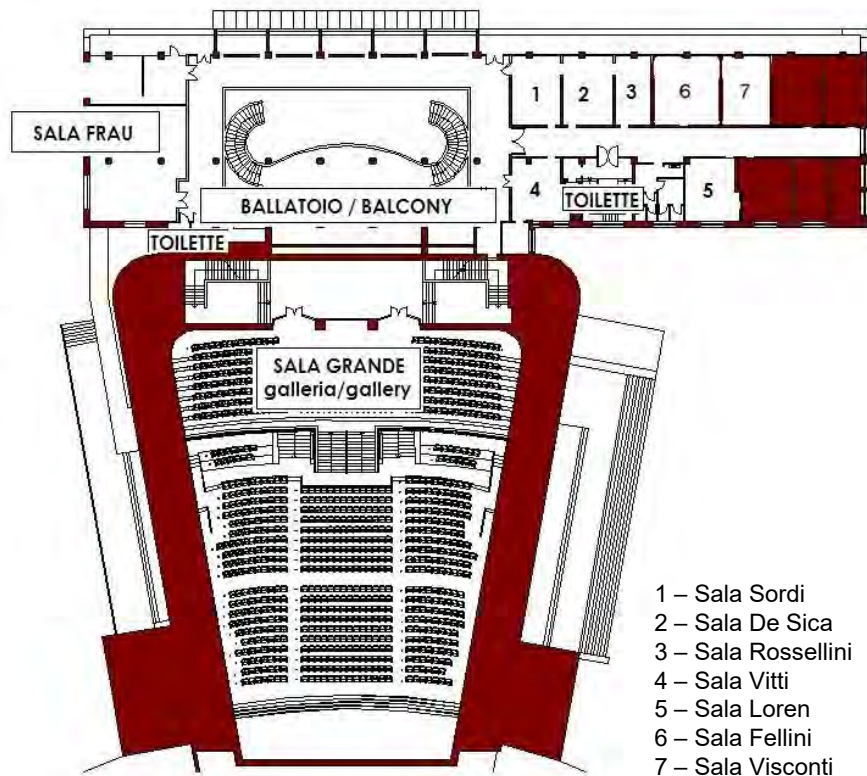
# Palazzo del Cinema



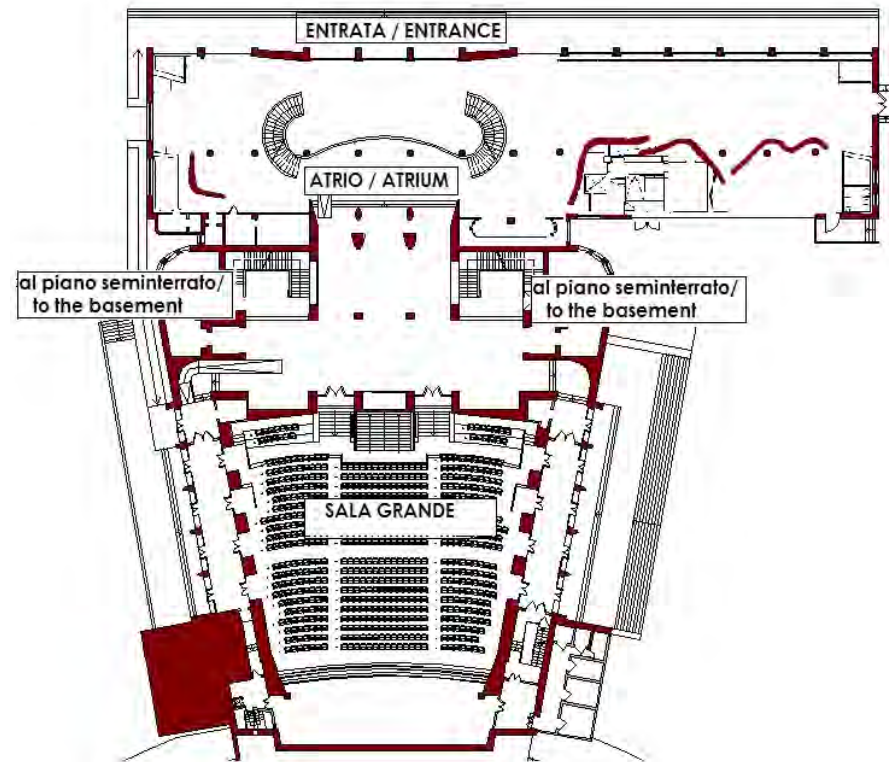
# Palazzo del Cinema

This building, on three floors, can accommodate up to 1.032 people in the Sala Grande and has an additional three rooms able to accommodate 48 to 120 people. It has also several additional meeting rooms with 15/45 seats, a large exhibition space of over 1,000 square meters and a terrace of 1,200 square meters. A spacious tunnel joins it to the Palazzo del Casinò.

## First Floor



## Mezzanine





# Palazzo del Cinema

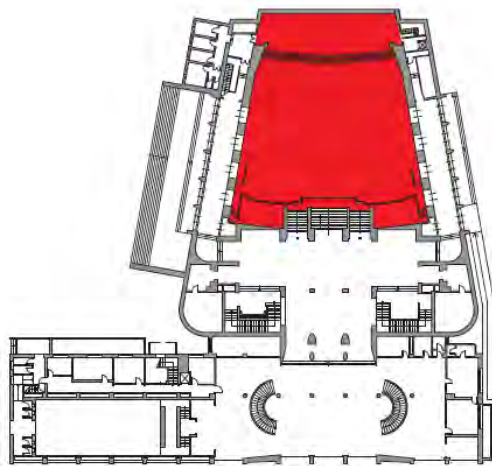
## Sala Grande


MEZZANINE

Area m2 742.37

Width m 25.31

Length m 29.90



	Theater	1.032 seats
-------------------------------------------------------------------------------------	---------	----------------



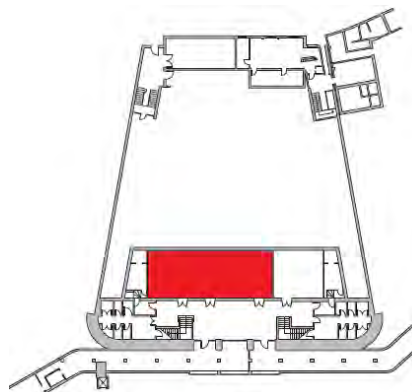
## Sala Pasinetti

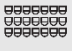
ZERO Floor

Area m2 151.24

Width m 7.60

Length m 19.90



	Theater	120 seats
-------------------------------------------------------------------------------------	---------	--------------



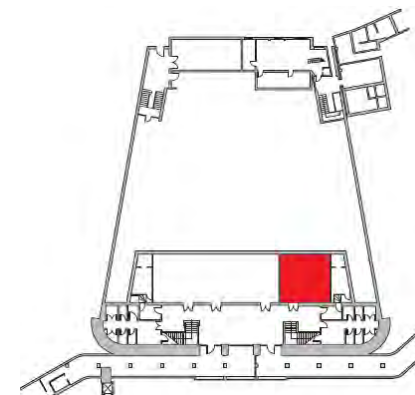
## Sala Zorzi


ZERO Floor

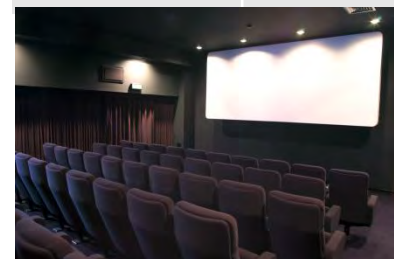
Area m2 60.23

Width m 7.60

Length m 7.93



	Theater	48 seats
---------------------------------------------------------------------------------------	---------	-------------

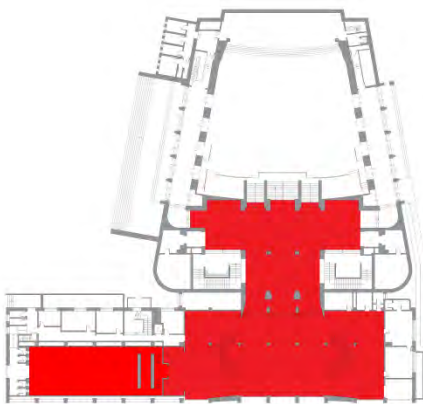


# Palazzo del Cinema

## Hall

MEZZANINE

Area m2 1.135



Cocktail

1.000  
people



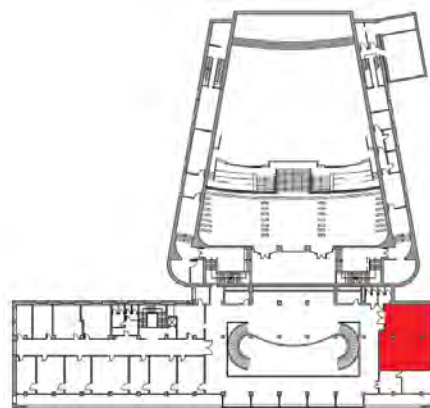
## Sala Frau

FIRST Floor

Area m2 102.87

Width m 9.18

Length m 11.68



Theater

70  
seats



Boardroom  
style

20  
seats



Horseshoe  
style

15  
seats

## Sala Vitti

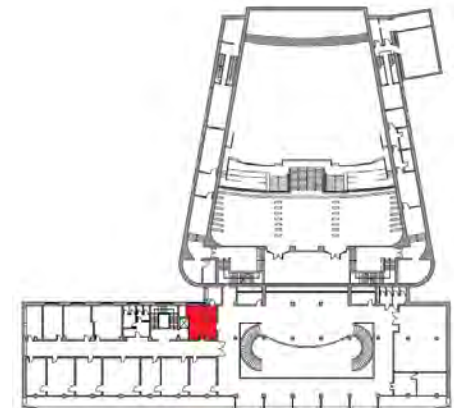
FIRST Floor

Area m2 29.56

Width m 5.30

Length m 6.00

*Availability to be verified according to the period*



Boardroom  
style

10  
seats



Horseshoe  
Table

6  
seats



# Palazzo del Cinema

## Sala Loren

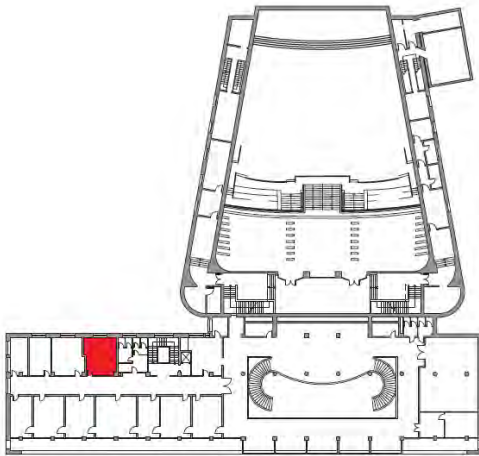
FIRST Floor

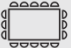

Area mq 29.68

Width m 5.20

Length m 6.00

*Availability to be verified according to the period.*



	Boardroom style	10 seats
	Horseshoe Style	6 seats

## Sala Visconti

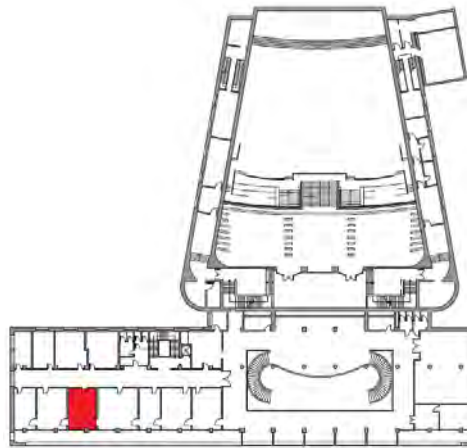
FIRST Floor




Area mq 30.27

Width m 4.60

Length m 6.58

*Availability to be verified according to the period.*



	Theater	15 seats
	Boardroom style	10 seats
	Horseshoe Table	10 seats

## Sala Fellini

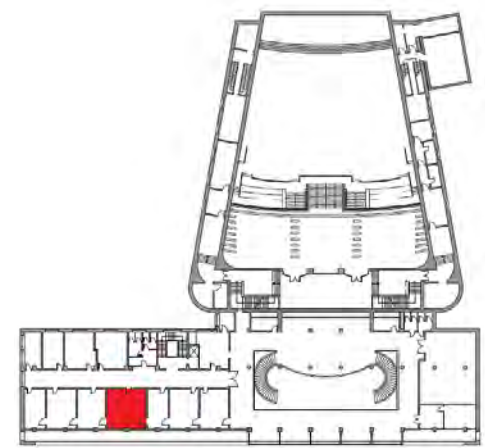
FIRST Floor



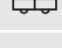

Area mq 41.99

Width m 6.40

Length m 6.58

*Availability to be verified according to the period.*



	Theater	20 seats
	Boardroom style	15 seats
	Horseshoe style	10 seats
	Classroom Style	10 seats

# Palazzo del Cinema

## Sala De Sica

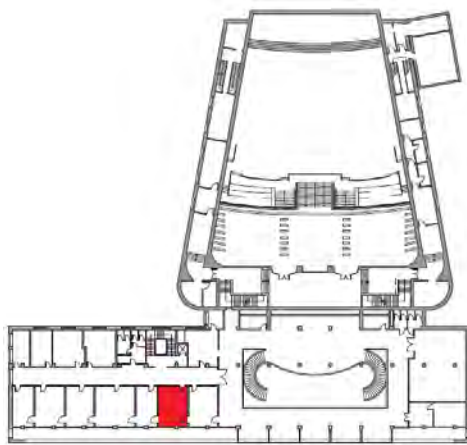
FIRST Floor

Area m2 31.46

Width m 4.80

Length m 6.58

*Availability to be verified according to the period.*



Boardroom  
style

10  
seats



Horseshoe  
Style

10  
seats

## Sala Sordi

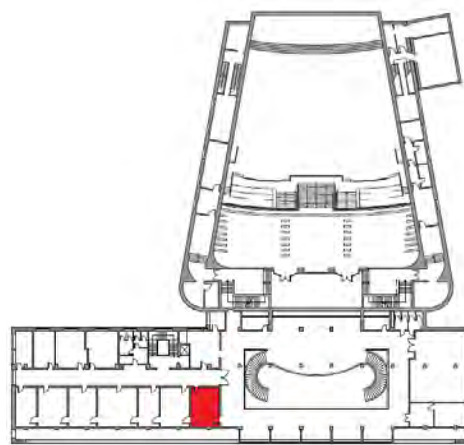
FIRST Floor

Area m2 30.80

Width m 4.70

Length m 6.58

*Availability to be verified according to the period.*



Boardroom  
style

10  
seats



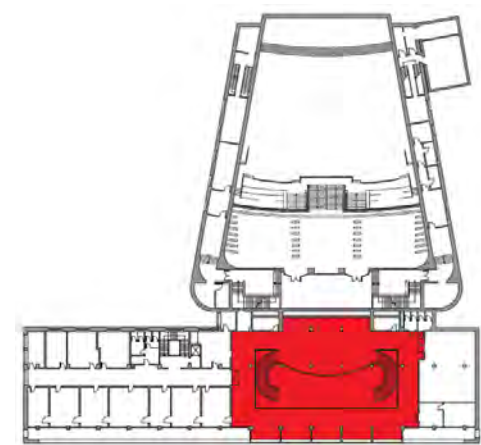
Horseshoe  
Style

8  
seats

## Ballatoio

FIRST Floor

Area m2 390.03



Cocktail

300  
people



# Palazzo del Casinò

A charming home, directly overlooking the sea and Venice, which since the early 30's has hosted some of the most famous people of all times





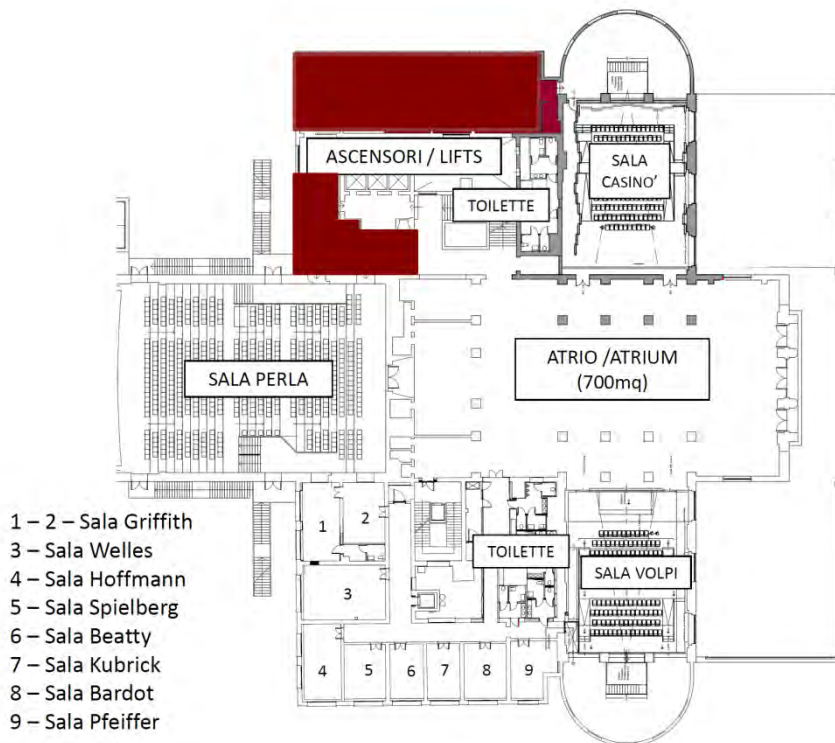
# Palazzo del Casinò



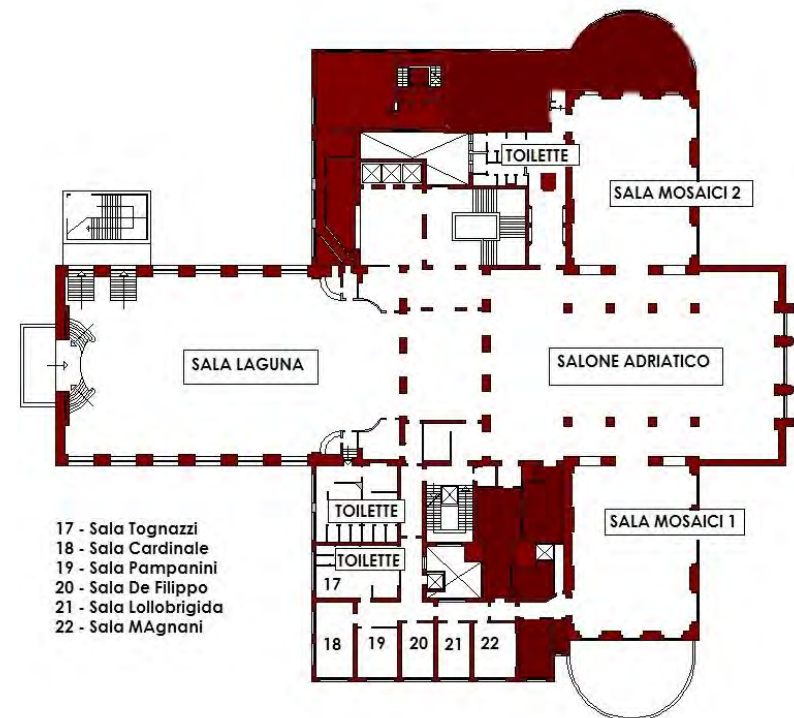
# Palazzo del Casinò

Elegance in Venetian style, the imposing architecture is characterized by elegant rooms in Venetian style, with great care for detail and precious interior; it's an ideal venue for gala dinners, exhibitions and meetings. Inside are Sala Perla seating up to 594 people, another 4 large rooms and huge exhibition spaces (over 3,000 square meters) useful also for lunches and cocktails.

## First floor



## Third floor





# Palazzo del Casinò

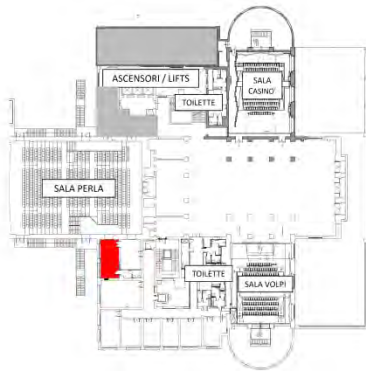
## Sala Griffith 1

MEZZANINE

Area m2 37.71

Width m 4.72

Length m 6.75



 Theater	20 seats
 Boardroom Style	12 seats
 Horseshoe Style	10 seats

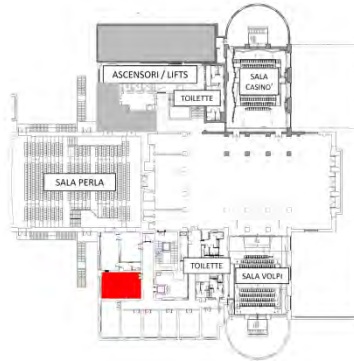
## Sala Welles





MEZZANINE

Area m2 56.44

Width m 6.04

Length m 9.11



 Theater	60 seats
 Boardroom Style	30 seats
 Horseshoe Style	28 seats
 Classroom Style	20 seats

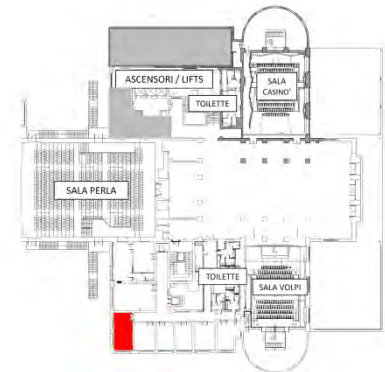
## Sala Hoffmann




FIRST floor

Area m2 41.99

Width m 6.40

Length m 6.58



 Theater	25 seats
 Boardroom Style	20 seats
 Horseshoe Style	15 seats

# Palazzo del Casinò

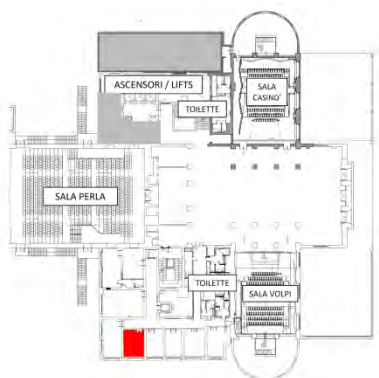
## Sala Spielberg

MEZZANINE

Area m2 24.01

Width m 3.75

Length m 6.39



Boardroom  
Style

10  
seats

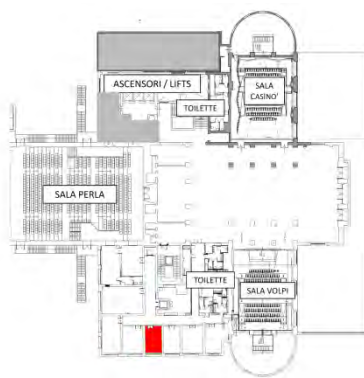
## Sala Beatty

MEZZANINE

Area m2 23.27

Width m 3.72

Length m 6.26



Boardroom  
Style

10  
seats

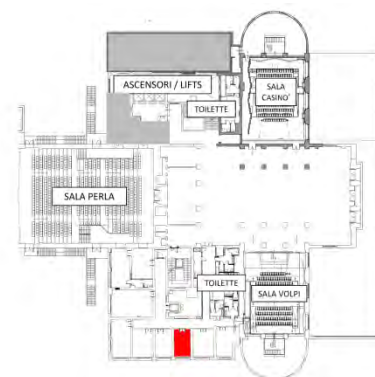
## Sala Kubrick

MEZZANINE

Area m2 22.96

Width m 3.68

Length m 6.29



Boardroom  
Style

10  
seats

# Palazzo del Casinò

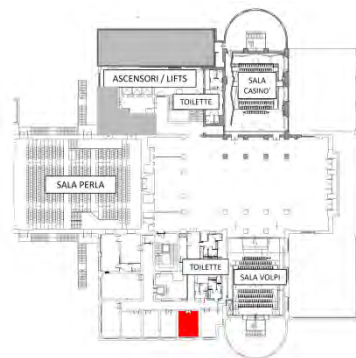
## Sala Bardot

MEZZANINE

Area m2 29.19

Width m 4.66

Length m 6.27



	Boardroom Style	12 seats
	Horseshoe Style	10 seats

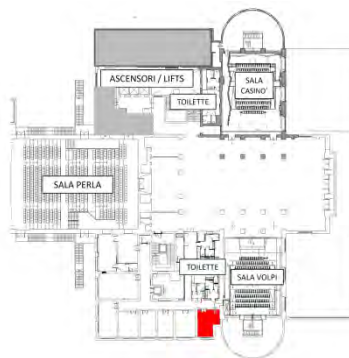
## Sala Pfeiffer



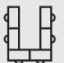
MEZZANINE

Area m2 29.12

Width m 19.26

Length m 13.70

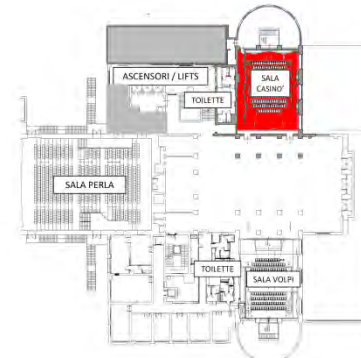


	Theater	20 seats
	Boardroom Style	15 seats
	Horseshoe Style	12 seats

## Sala Casinò

MEZZANINE

Area m2 358.47



	Theater	150 seats
--------------------------------------------------------------------------------------	---------	--------------





# Palazzo del Casinò

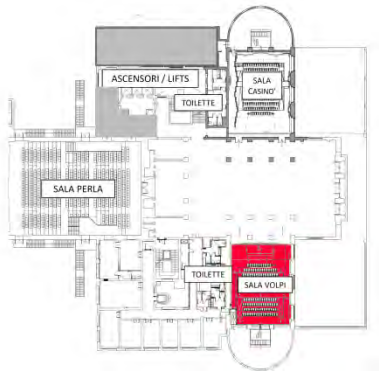
## Sala Volpi

MEZZANINE

Area m2 260.69

Width m 13.70

Length m 19.26



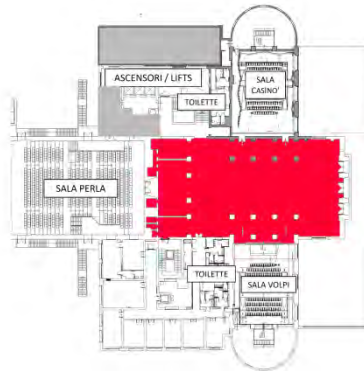
## Exhibition area

MEZZANINE

Area m2 790.00

Width m 39.94

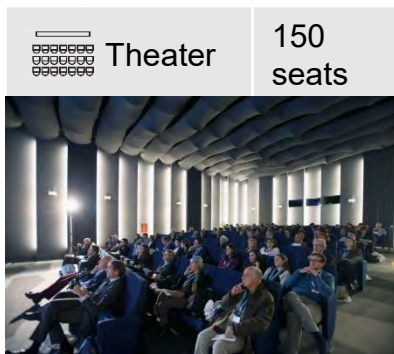
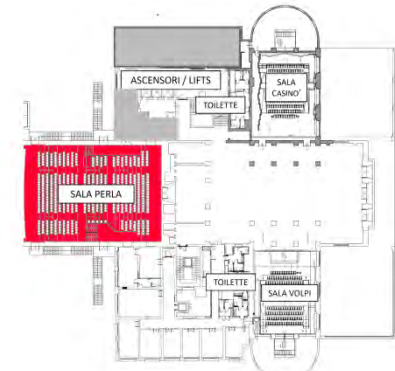
Length m 21.70



## Sala Perla

MEZZANINE

Area m2 813.65



Theater

150  
seats



Cocktail

845  
people



Teatro

594  
seats



# Palazzo del Casinò

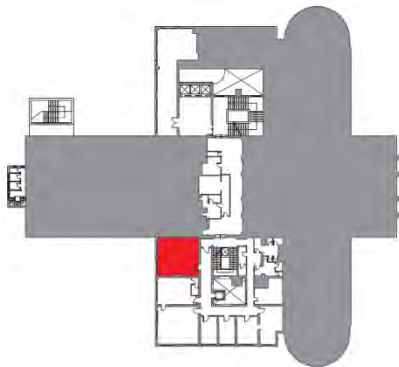
## Sala Mangano

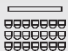



SECOND floor

Area m2 80.00

Width m 8.68

Length m 9.28



 Theater	50 seats
 Boardroom Style	25 seats
 Horseshoe Style	25 seats
 Classroom Style	20 seats

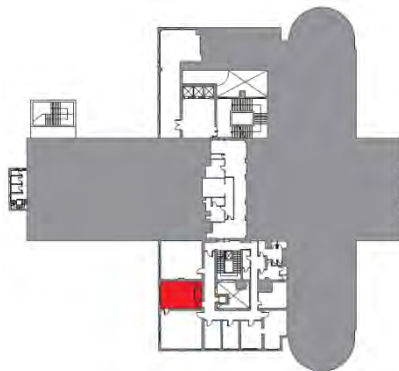
## Sala Rossi Drago

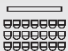

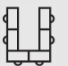

SECOND floor

Area m2 48.33

Width m 6.10

Length m 7.57



 Theater	40 seats
 Boardroom Style	20 seats
 Horseshoe Style	20 seats
 Classroom Style	12 seats

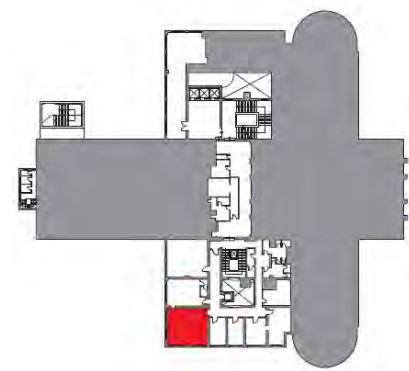
## Sala Martinelli


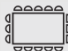


SECOND floor

Area m2 78.94

Width m 8.55

Length m 9.26



 Theater	50 seats
 Boardroom Style	25 seats
 Horseshoe Style	25 seats
 Classroom Style	20 seats

# Palazzo del Casinò

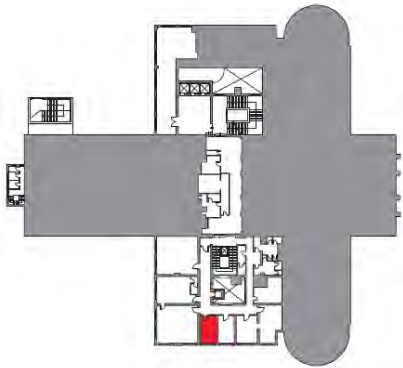
## Sala Chiari

SECOND floor

Area m2 23.33

Width m 3.74

Length m 6.26



Boardroom  
Style

12  
seats

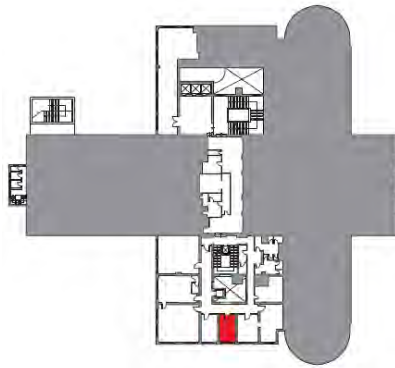
## Sala Koscina

SECOND floor

Area m2 22.74

Width m 3.63

Length m 6.26



Boardroom  
Style

10  
seats

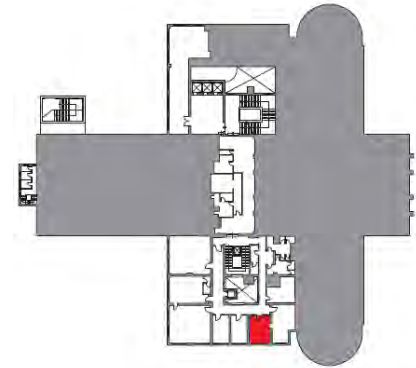
## Sala Buy

SECOND floor

Area m2 29.52

Width m 4.71

Length m 6.26



Boardroom  
Style

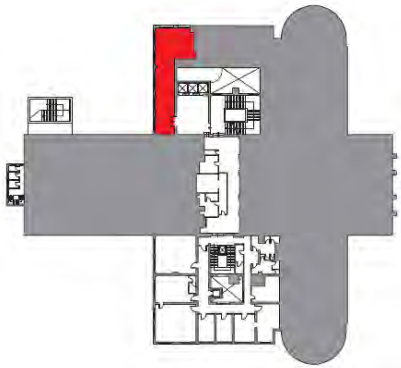
12  
seats




# Palazzo del Casinò

## Sala Amici

SECOND floor  
Area m2 139.91  
Width m 7.14  
Length m 8.06

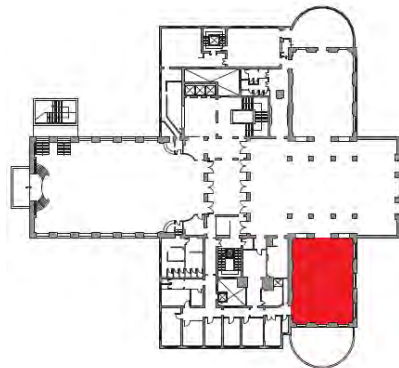







	Theater	100 seats
	Cocktail	150 people



## Sala Mosaici 1

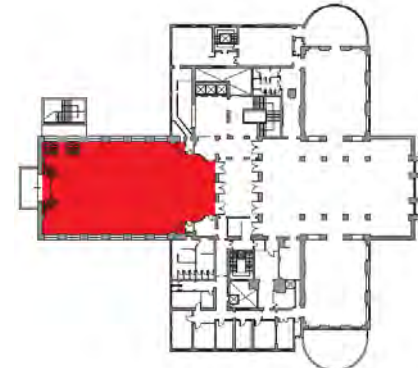
THIRD floor  
Area m2 261.33  
Width m 13.30  
Length m 19.01






	Theater	220 seats
	Banquet style	200 seats
	Cocktail	300 people
	Classroom style	70 seats
	Hourseshoe Style	40 seats

## Sala Laguna

THIRD floor  
Area m2 680.87  
Width m 20.30  
Length m 38.35



	Banquet style	500 seats
	Cocktail	750 people
	Classroom Style	150 seats



# Palazzo del Casinò

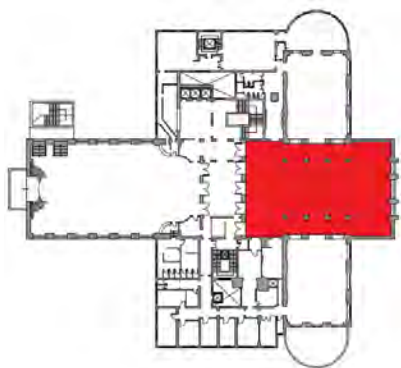
## Sala Adriatico

THIRD floor

Area m2 685.43

Width m 21.50

Length m 33.20



	Banquet Style	450 seats
	Cocktail	700 people



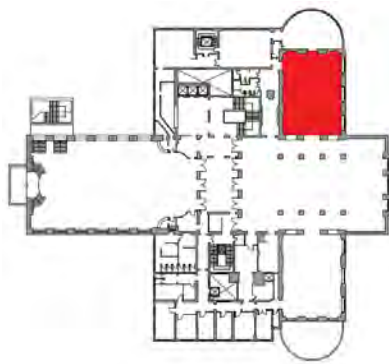
## Sala Mosaici 2




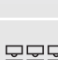
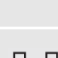
THIRD floor

Area m2 258.16

Width m 13.42

Length m 19.00



	Theater	220 seats
	Banquet Style	200 seats
	Cocktail	300 people
	Classroom Style	70 seats
	Horseshoe Style	40 seats





# Palazzo del Casinò

Spectacular spaces not just for congresses.

In the beautiful setting of the premises, managed by Venice Convention, there is also space for other special events such as **fashion parades, temporary exhibitions, product presentations, musical events, ballet, private gala and dance evenings, theatre and cabaret.**





# Palazzo del Casinò

Ideal location for gala dinners





# Palazzo del Casinò and Palazzo del Cinema Exhibition Spaces





# Sala Darsena

The **Sala Darsena** at Venice Lido hosts some of the most famous musical and theatrical events on the island. It is a large covered arena and completes the offer of the Congress Centre hosting **1,400 people** in a single room. Thanks to its large areas and number of seats, it is particularly suitable for business conventions.





# Sala Darsena



**Services**



# Carta trasporti

Vela offers an important benefit to help congress participants move around freely using **public transport**, thanks to the dedicated travel card.





# Private Dock

Private and customisable landings at the Palazzo del Casinò





# Advertising

Vela offers the possibility of combining congress activities with the use of advertising spaces in the city, especially at the places of arrival of the congress participants in Venice and the Lido.





# Post congress activities



Vela also manages other prestigious venues in the city, such as the Arsenale and the **Pescheria di Rialto**, and can organise post-congress events in other historical places of the city, such as **La Fenice Theatre**, **Ca' Vendramin Calergi** (home to Venice Casinò), **Palazzo Ducale** and other important museum and exhibition venues in Venice.



# Events

Vela organises the most important traditional events of the city, such as **Venice Carnival**, the **Festa del Redentore** and the **Historical Regatta**, and offers the opportunity of participating in exclusive events during these traditional festivals, as well as sponsoring the event





**Contacts:**

Tel. +39 041 2722626  
[meetingevents@velaspa.com](mailto:meetingevents@velaspa.com)