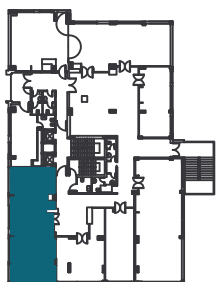
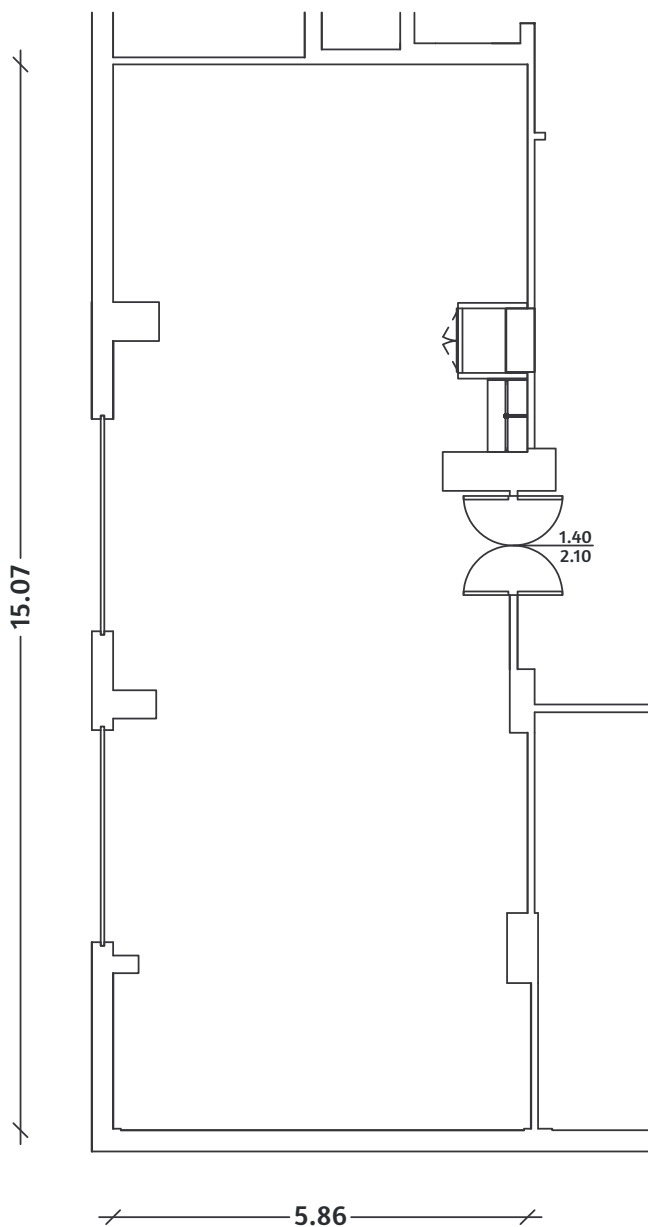


SALA ANDROMEDA

MQ 86,45 | H 2,86 | PLATEA 60 | Ferro di Cavallo 20 | Tavola Rotonda 30



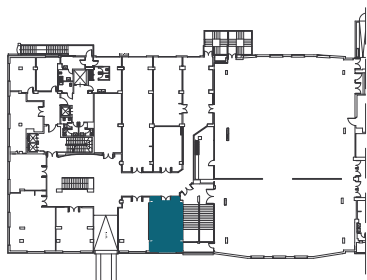
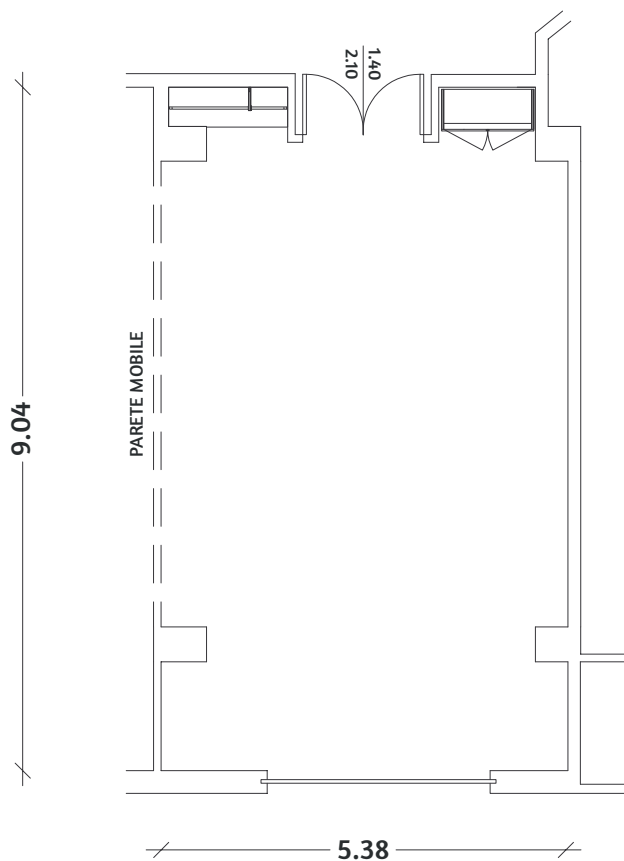
EDIFICIO PONENTE | PIANO PRIMO



SCALA 1:100

SALA BERING

MQ 45 | H 3 | PLATEA 30 | Ferro di Cavallo 16 | Tavola Rotonda 20



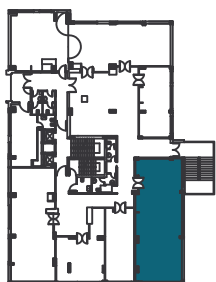
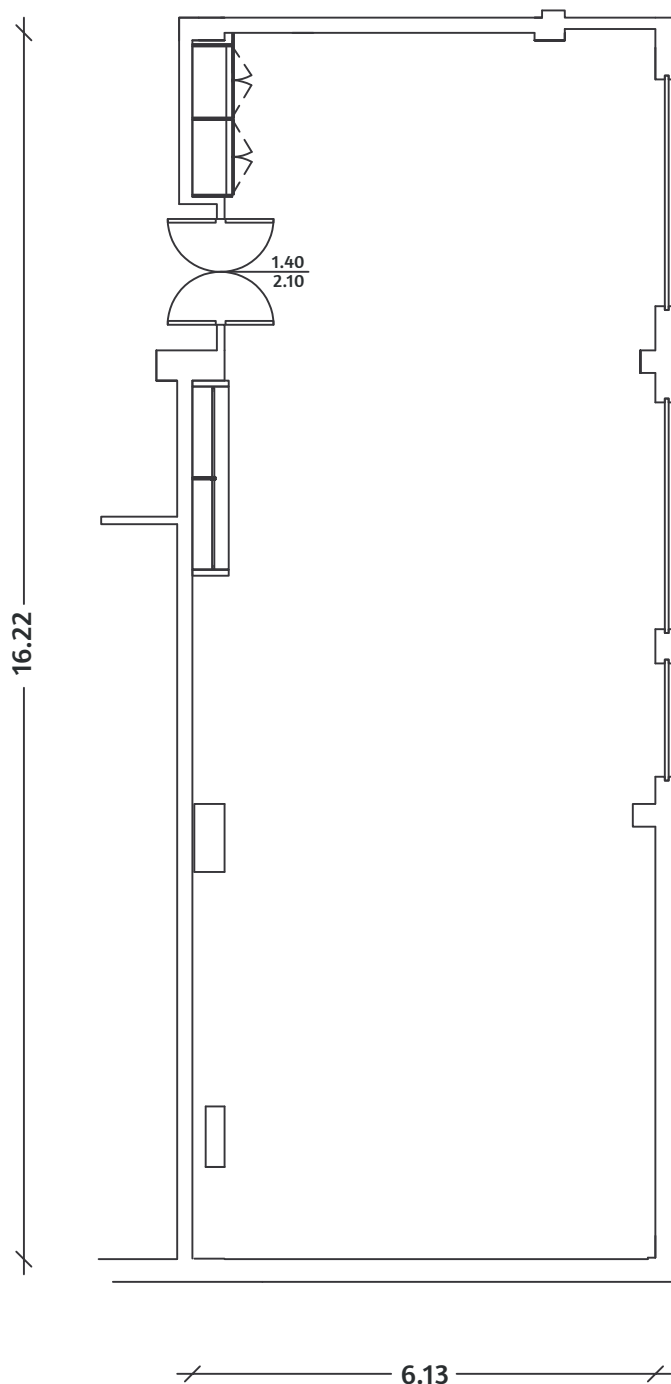
EDIFICIO SERENA | PIANO PRIMO



SCALA 1:100

SALA BOREALE

MQ 98 | H 3 | PLATEA 100 | Ferro di Cavallo 36 | Tavola Rotonda 40



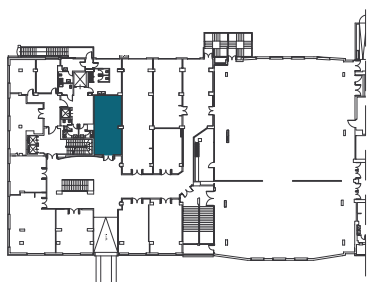
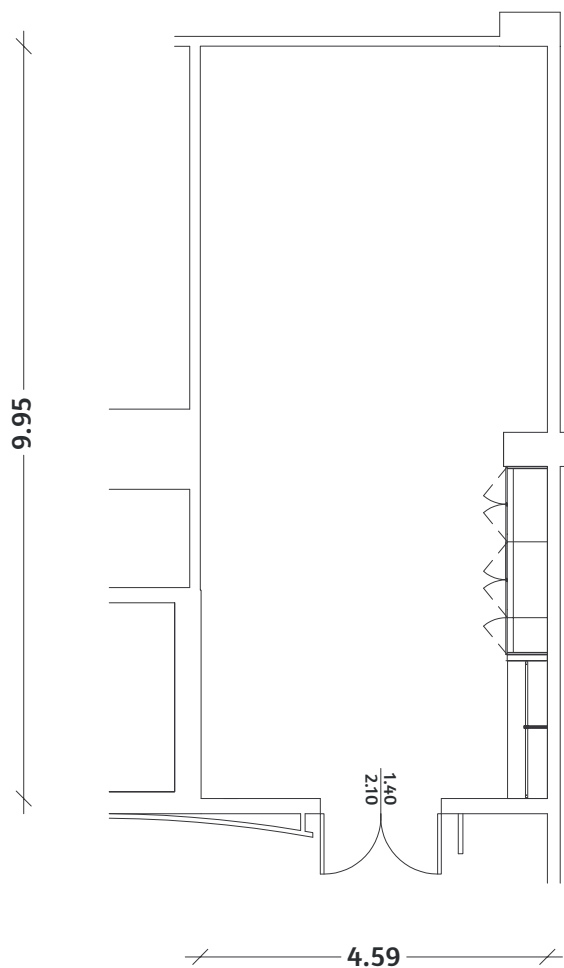
EDIFICIO PONENTE | PIANO PRIMO



SCALA 1:100

SALA CABOTO

MQ 45 | H 4 | PLATEA 30 | Ferro di Cavallo 20 | Tavola Rotonda 22



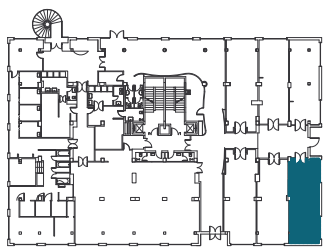
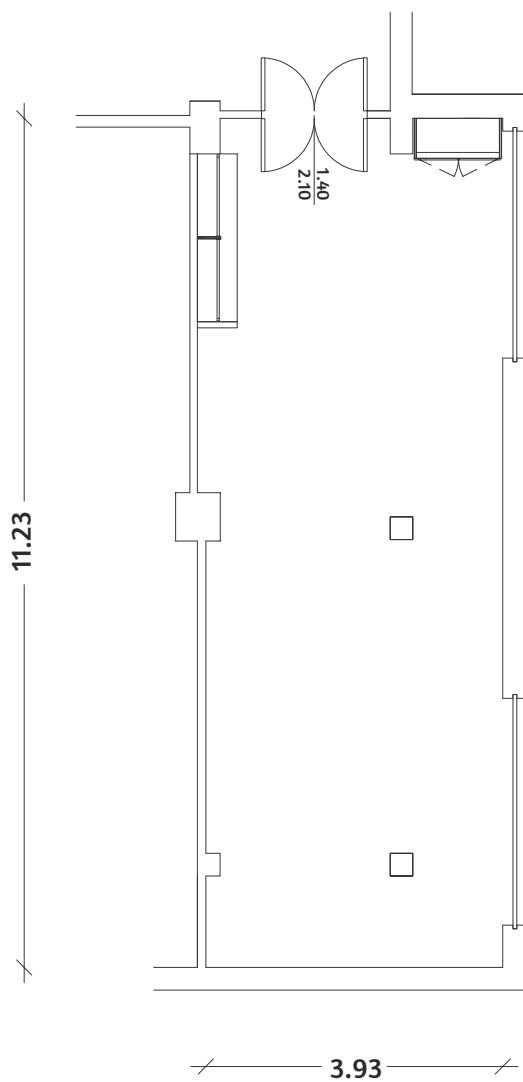
EDIFICIO SERENA | PIANO PRIMO



SCALA 1:100

SALA CARIDDI

MQ 44 | H 3 | PLATEA 20 | Tavola Rotonda 16



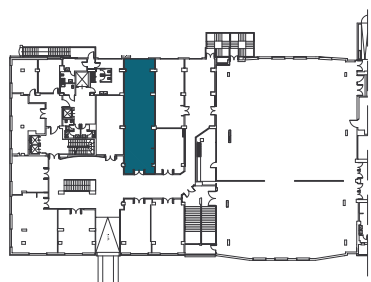
EDIFICIO ATLANTE | PIANO PRIMO



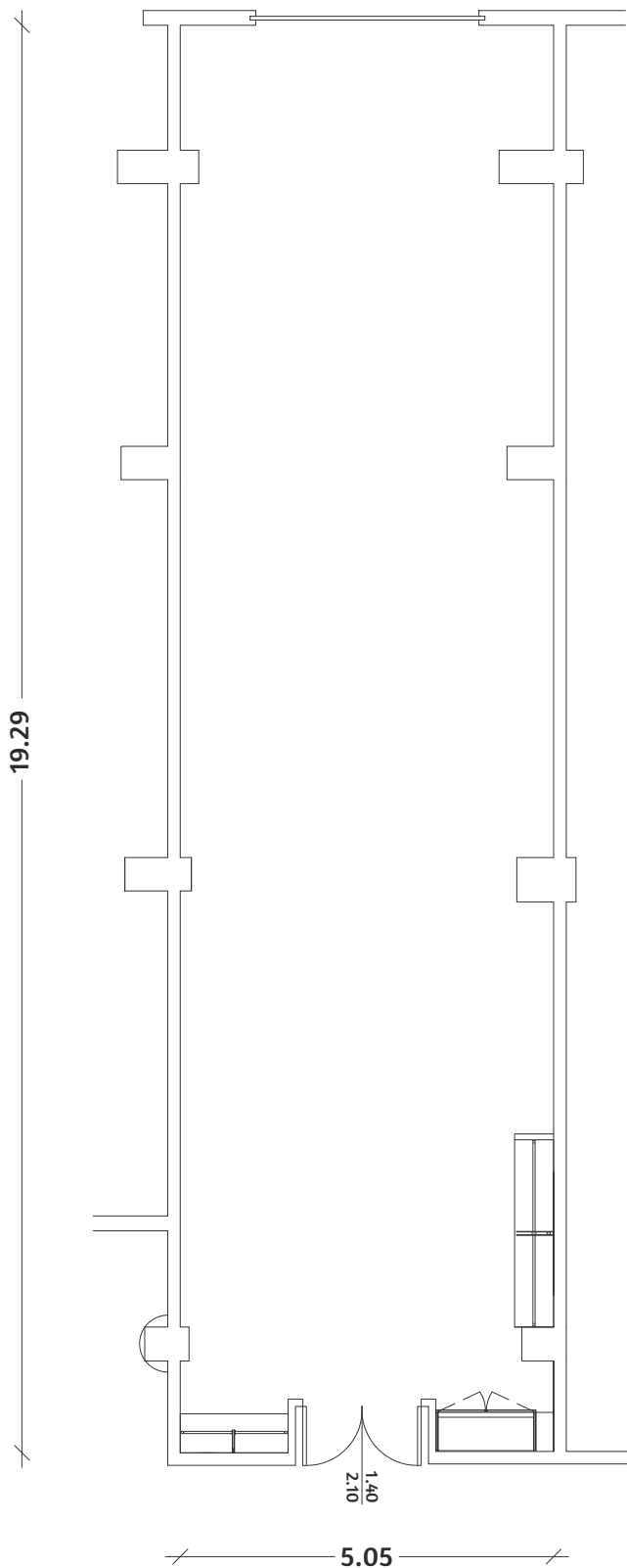
SCALA 1:100

SALA COLOMBO

MQ 95 | H 4 | PLATEA 100 | Ferro di Cavallo 40 | Tavola Rotonda 40



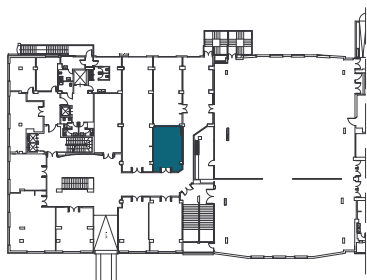
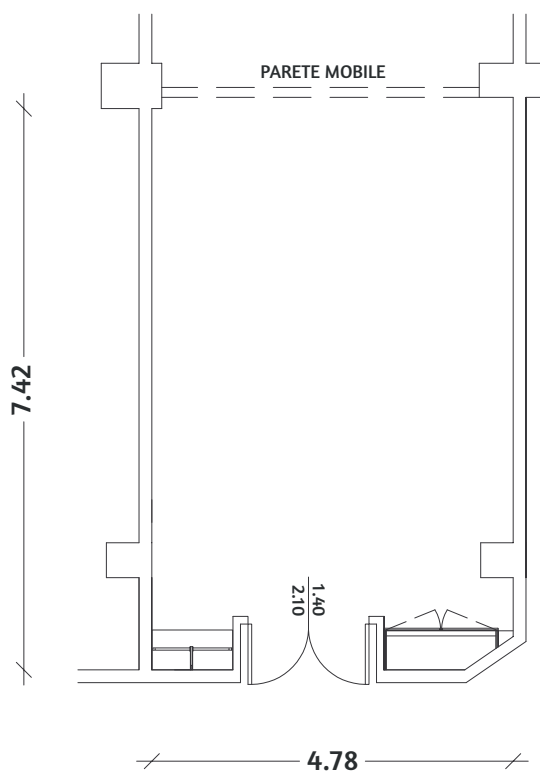
EDIFICIO SERENA | PIANO PRIMO



SCALA 1:100

SALA COOK

MQ 35 | H 3 | PLATEA 20 | Ferro di Cavallo 14 | Tavola Rotonda 18

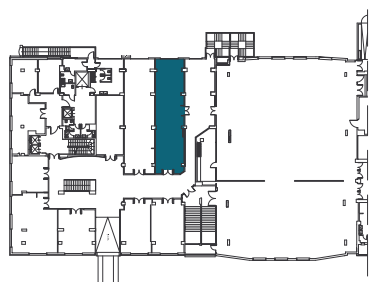


EDIFICIO SERENA | PIANO PRIMO

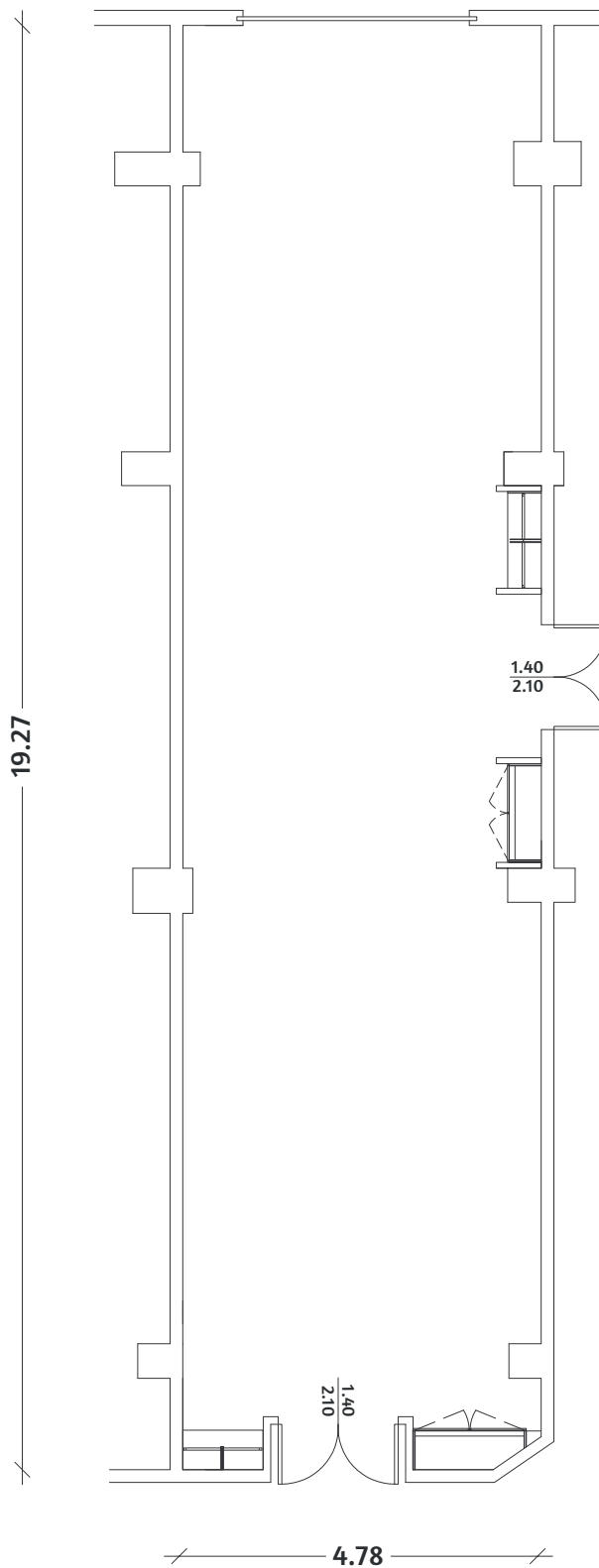


SALA COOK+VESPUCCI

MQ 89 | H 4 | PLATEA 90 | Ferro di Cavallo 40 | Tavola Rotonda 40

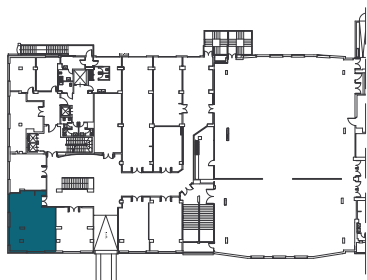
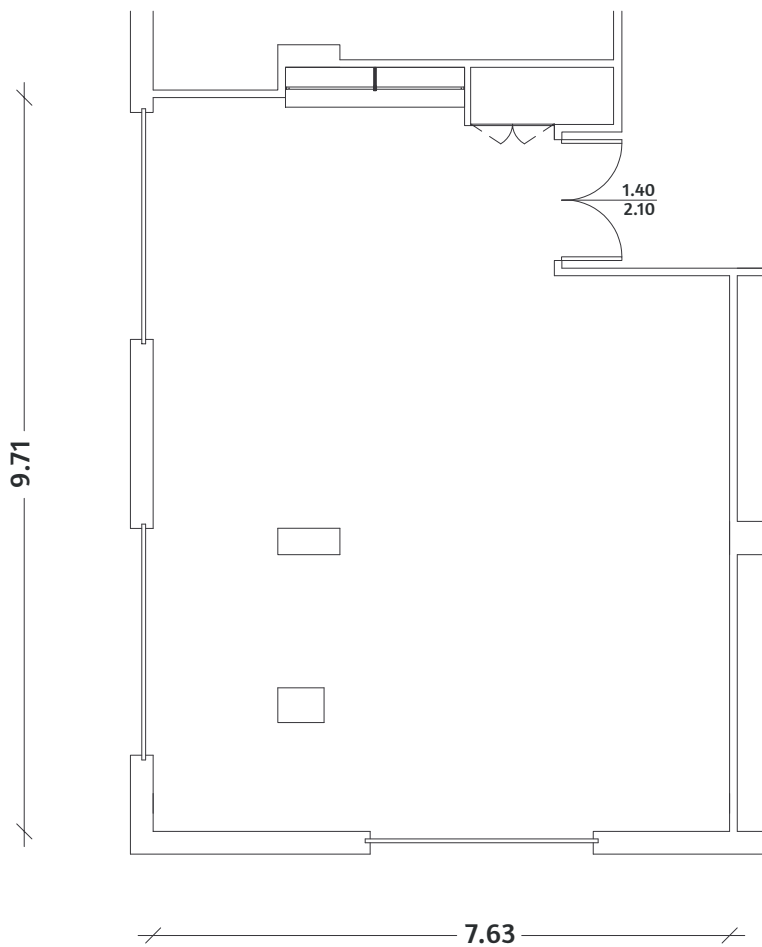


EDIFICIO SERENA | PIANO PRIMO



SALA DE GAMA

MQ 70 | H 3 | PLATEA 35 | Ferro di Cavallo 20 | Tavola Rotonda 20



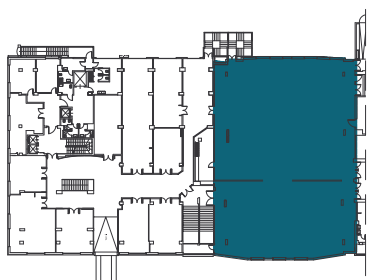
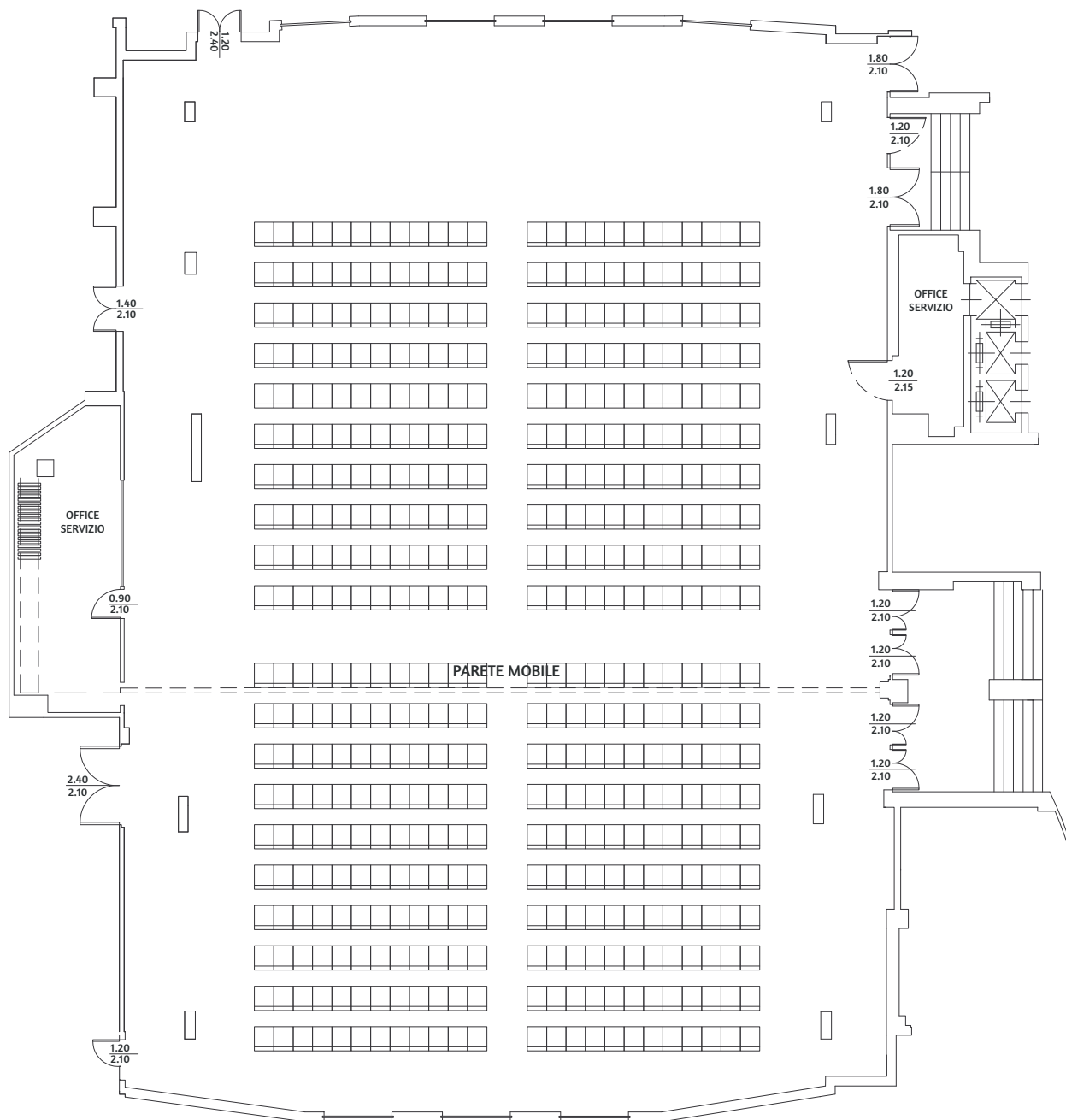
EDIFICIO SERENA | PIANO PRIMO



SCALA 1:100

SALA DEI MARI

MQ 777 | H 4 | PLATEA 1.000 | Ferro di Cavallo 230



EDIFICIO SERENA | PIANO PRIMO



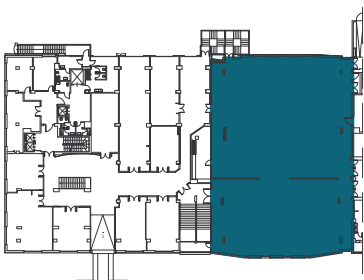
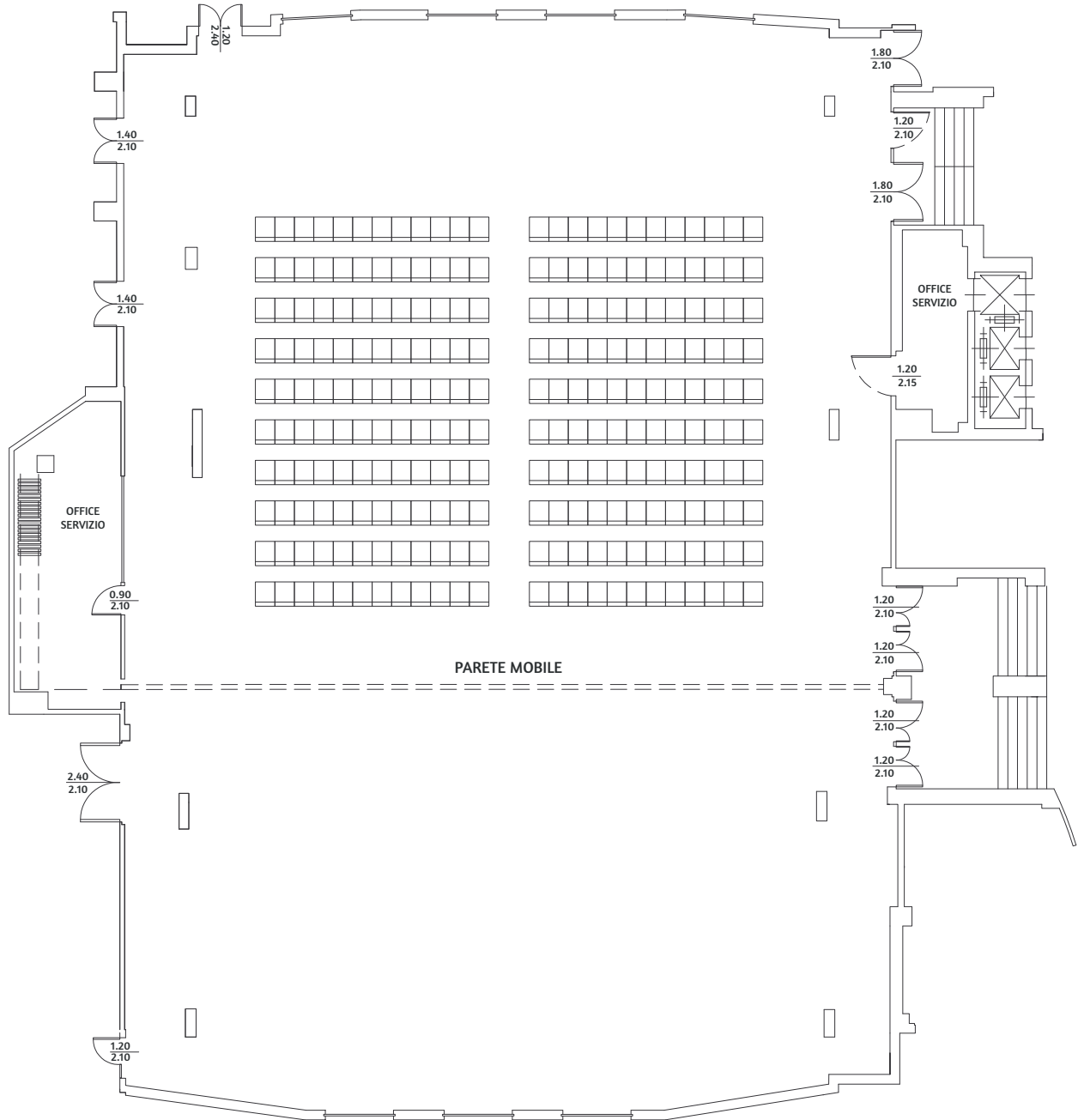
SCALA 1:200

SALA DEL NORD



SERENA MAJESTIC®
HOTEL RESIDENCE
★★★★

MQ 478 | H 4 | PLATEA 500 | Ferro di Cavallo 150



EDIFICIO SERENA | PIANO PRIMO



SCALA 1:200

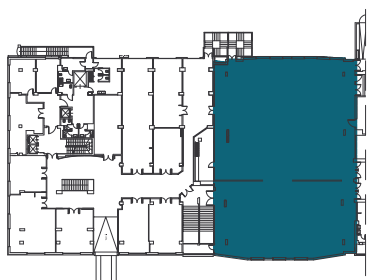
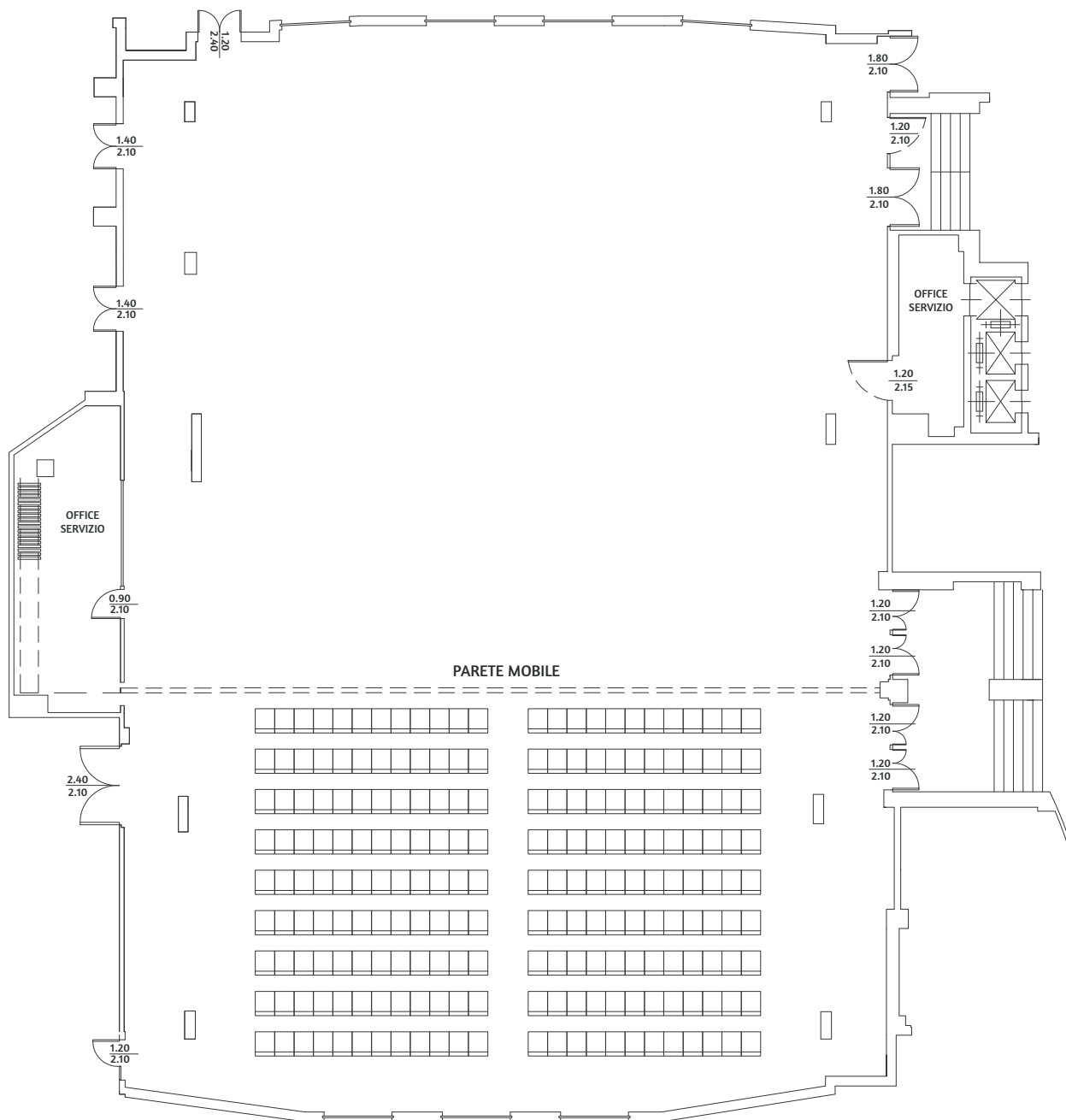
SERENA MAJESTIC HOTEL RESIDENCE

Viale Carlo Maresca 12 - 65015 Montesilvano (PE) | 085 83 699 | info@bluserena.it | www.bluserena.it

BLUSERENA®
CLUB & HOTELS
à pura vita

SALA DEL SUD

MQ 299 | H 4 | PLATEA 300 | Ferro di Cavallo 80



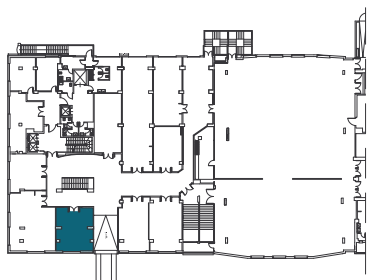
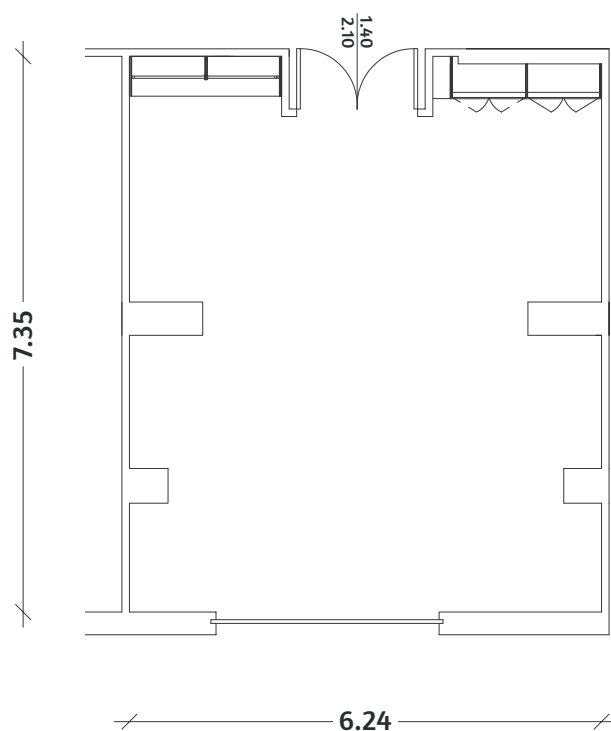
EDIFICIO SERENA | PIANO PRIMO



SCALA 1:200

SALA DORIA

MQ 43 | H 3 | PLATEA 20 | Ferro di Cavallo 10 | Tavola Rotonda 16



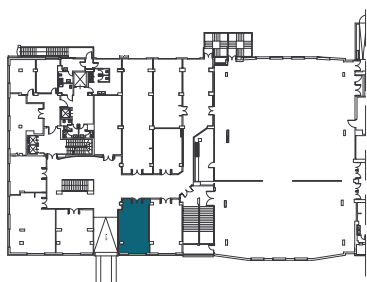
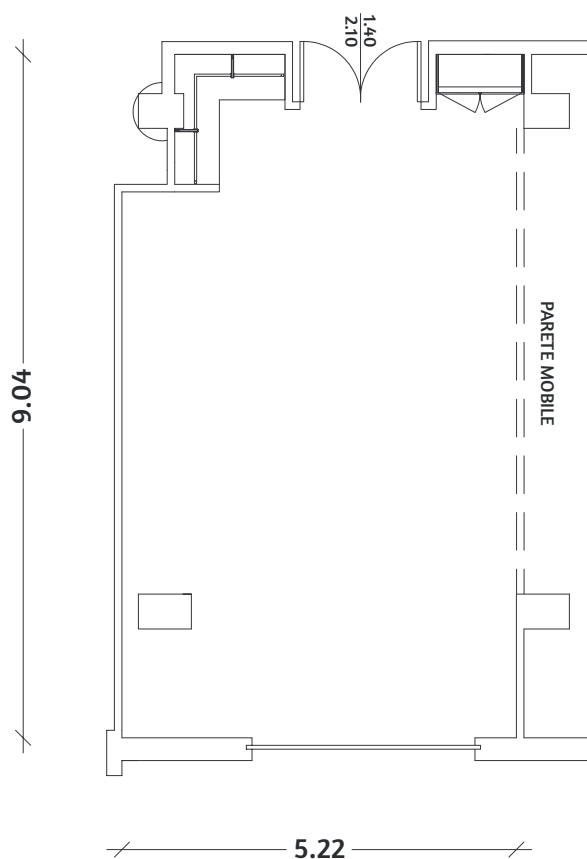
EDIFICIO SERENA | PIANO PRIMO



SCALA 1:100

SALA MAGELLANO

MQ 44 | H 3 | PLATEA 30 | Ferro di Cavallo 16 | Tavola Rotonda 20



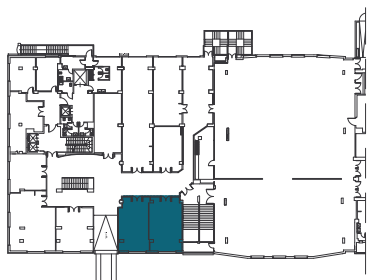
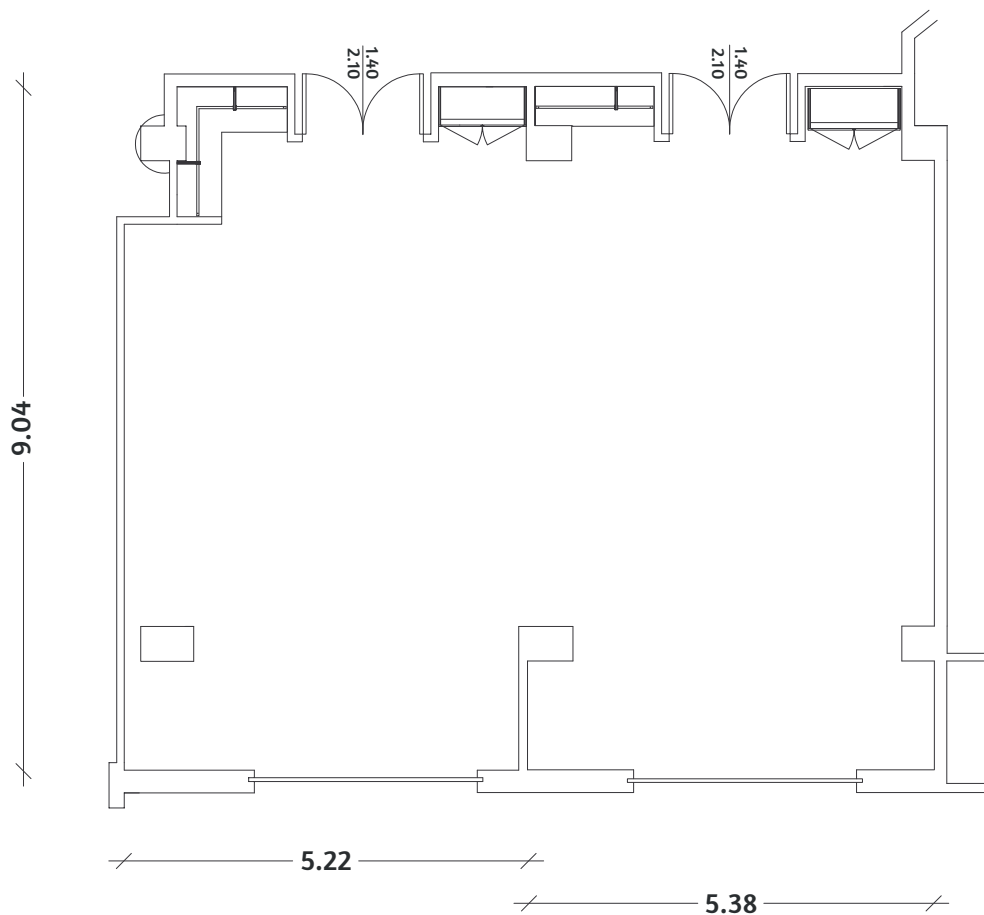
EDIFICIO SERENA | PIANO PRIMO



SCALA 1:100

SALA MAGELLANO+BERING

MQ 90 | H 3 | PLATEA 60 | Ferro di Cavallo 24 | Tavola Rotonda 30



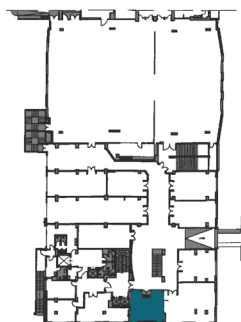
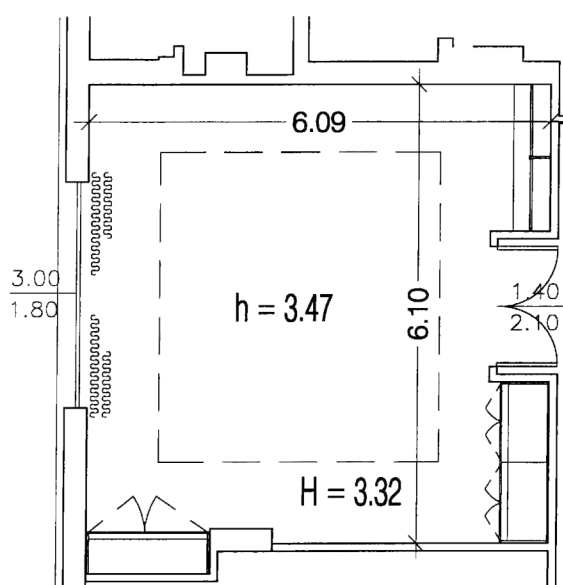
EDIFICIO SERENA | PIANO PRIMO



SCALA 1:100

SALA NELSON

MQ 86 | H 3,47



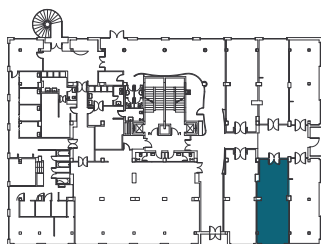
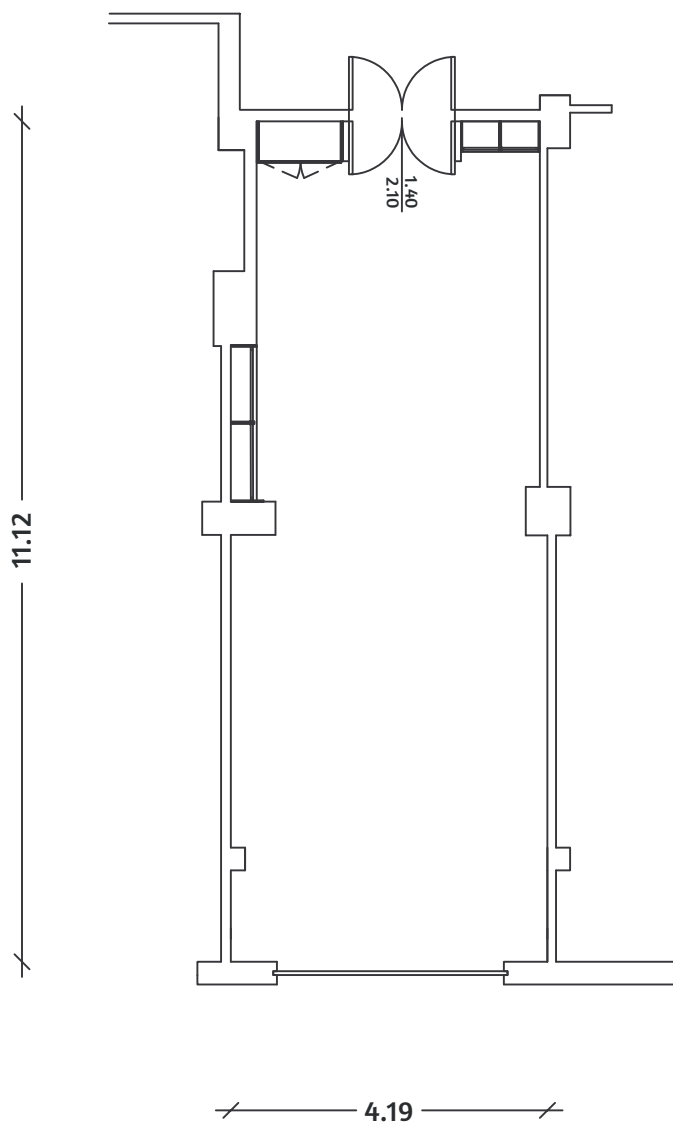
ALBERGO SERENA | PIANO PRIMO



SCALA 1:100

SALA NEMO

MQ 44 | H 3 | PLATEA 30 | Ferro di Cavallo 20 | Tavola Rotonda 20



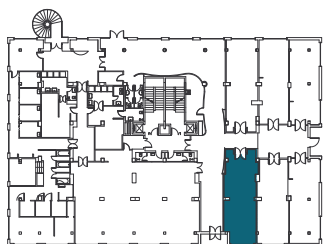
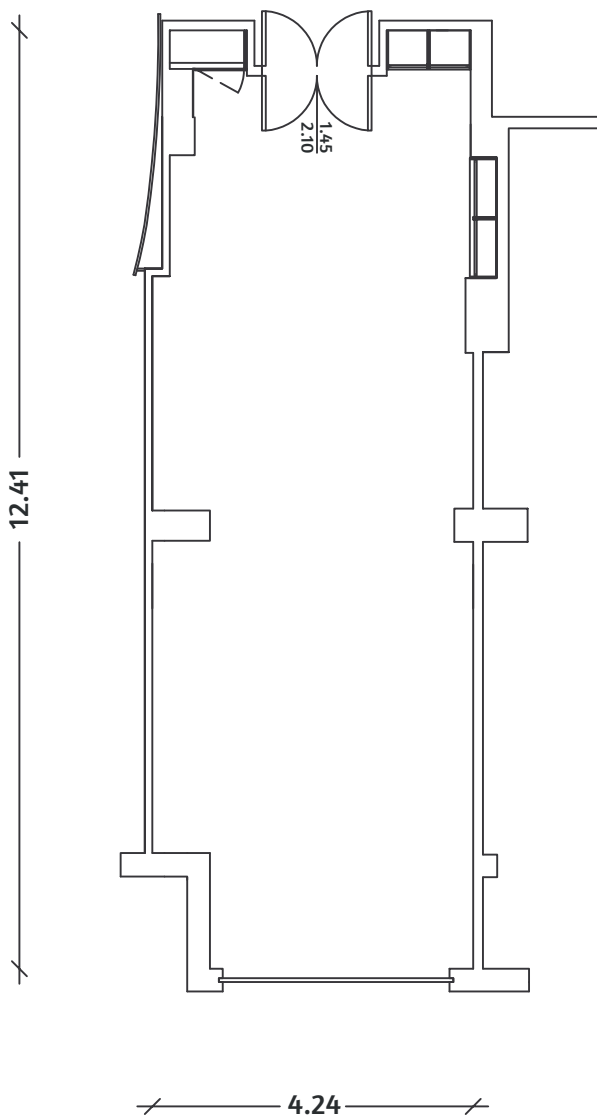
EDIFICIO ATLANTE | PIANO PRIMO



SCALA 1:100

SALA NETTUNO

MQ 49 | H 3 | PLATEA 30 | Ferro di Cavallo 20 | Tavola Rotonda 24



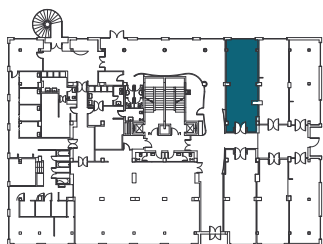
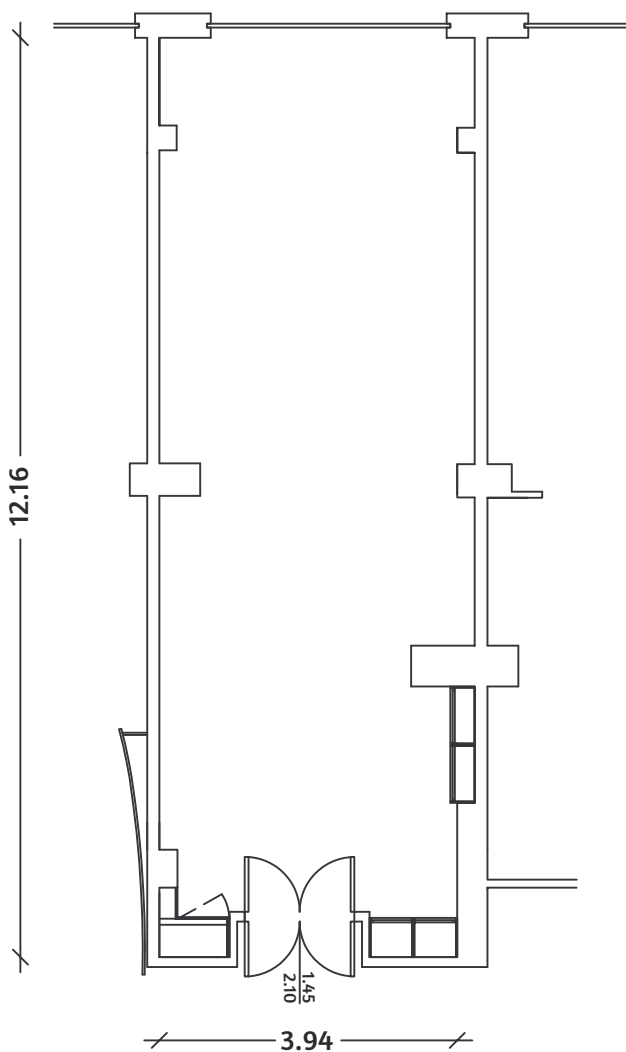
EDIFICIO ATLANTE | PIANO PRIMO



SCALA 1:100

SALA ODISSEO

MQ 48 | H 3 | PLATEA 30 | Ferro di Cavallo 16 | Tavola Rotonda 20



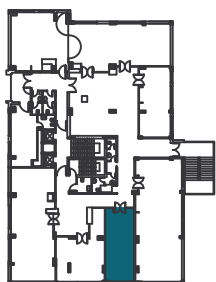
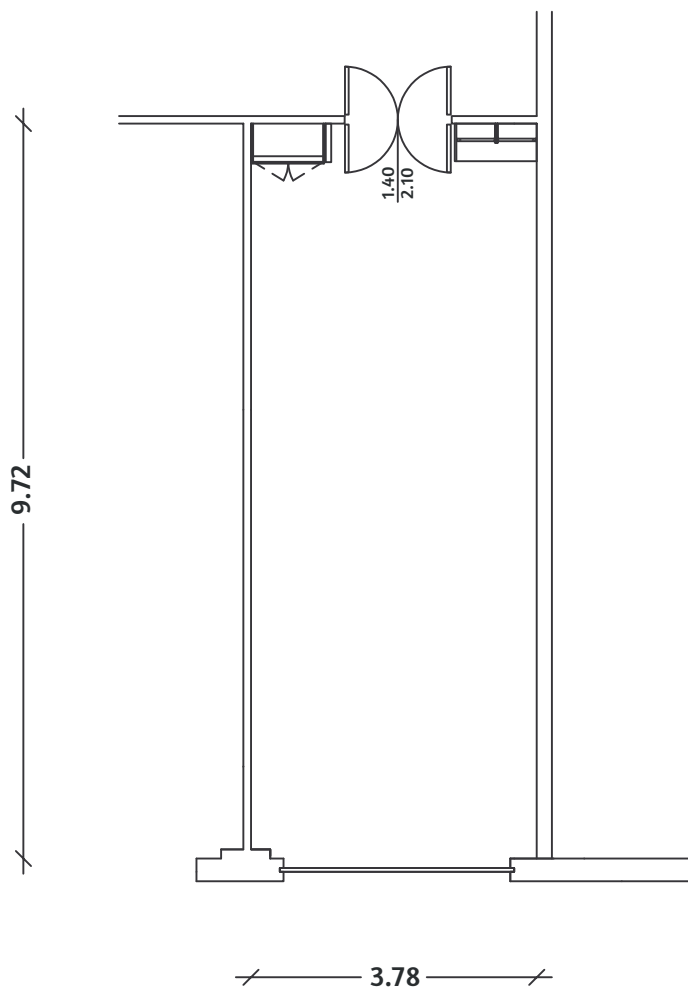
EDIFICIO ATLANTE | PIANO PRIMO



SCALA 1:100

SALA ORIONE

MQ 37 | H 3 | PLATEA 30 | Ferro di Cavallo 14 | Tavola Rotonda 20



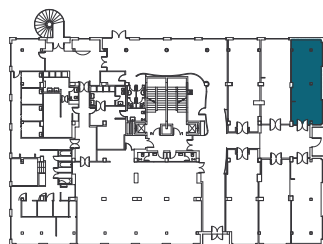
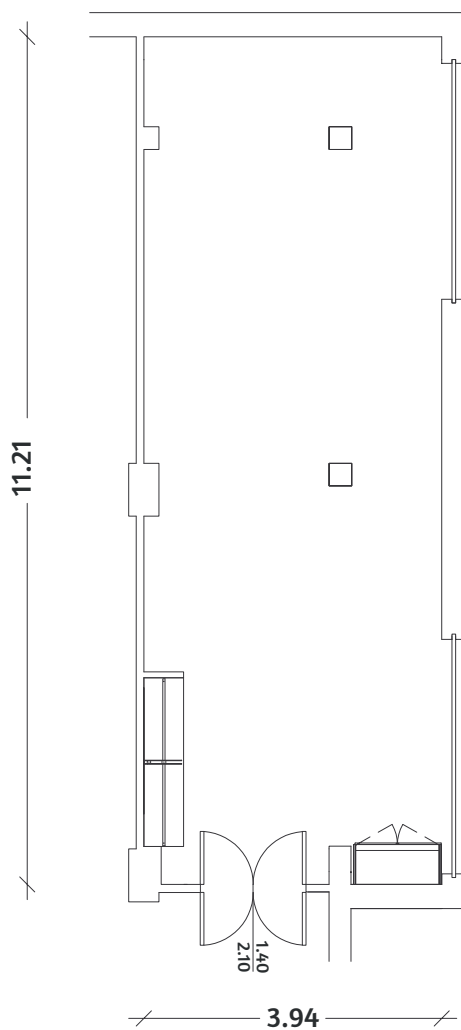
EDIFICIO PONENTE | PIANO PRIMO



SCALA 1:100

SALA SCILLA

MQ 44 | H 3 | PLATEA 20 | Tavola Rotonda 16



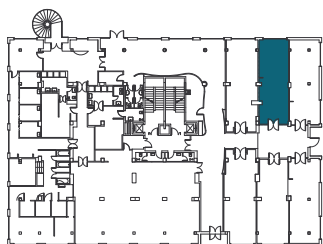
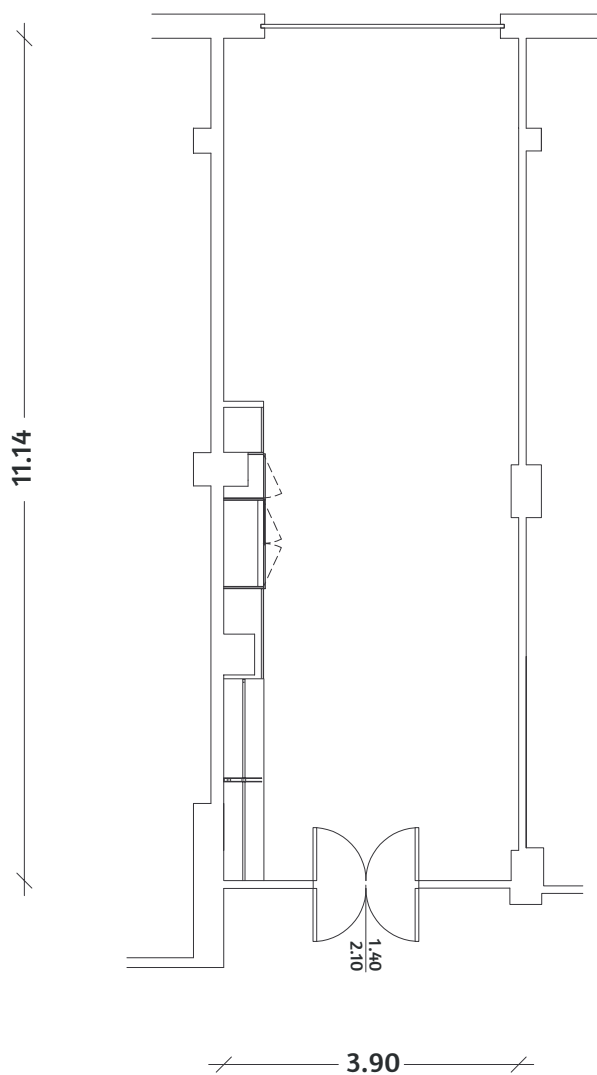
EDIFICIO ATLANTE | PIANO PRIMO



SCALA 1:100

SALA SIRENA

MQ 43 | H 3 | PLATEA 30 | Ferro di Cavallo 20 | Tavola Rotonda 24



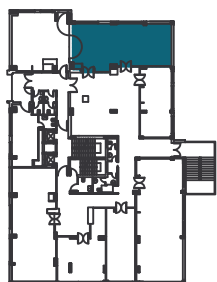
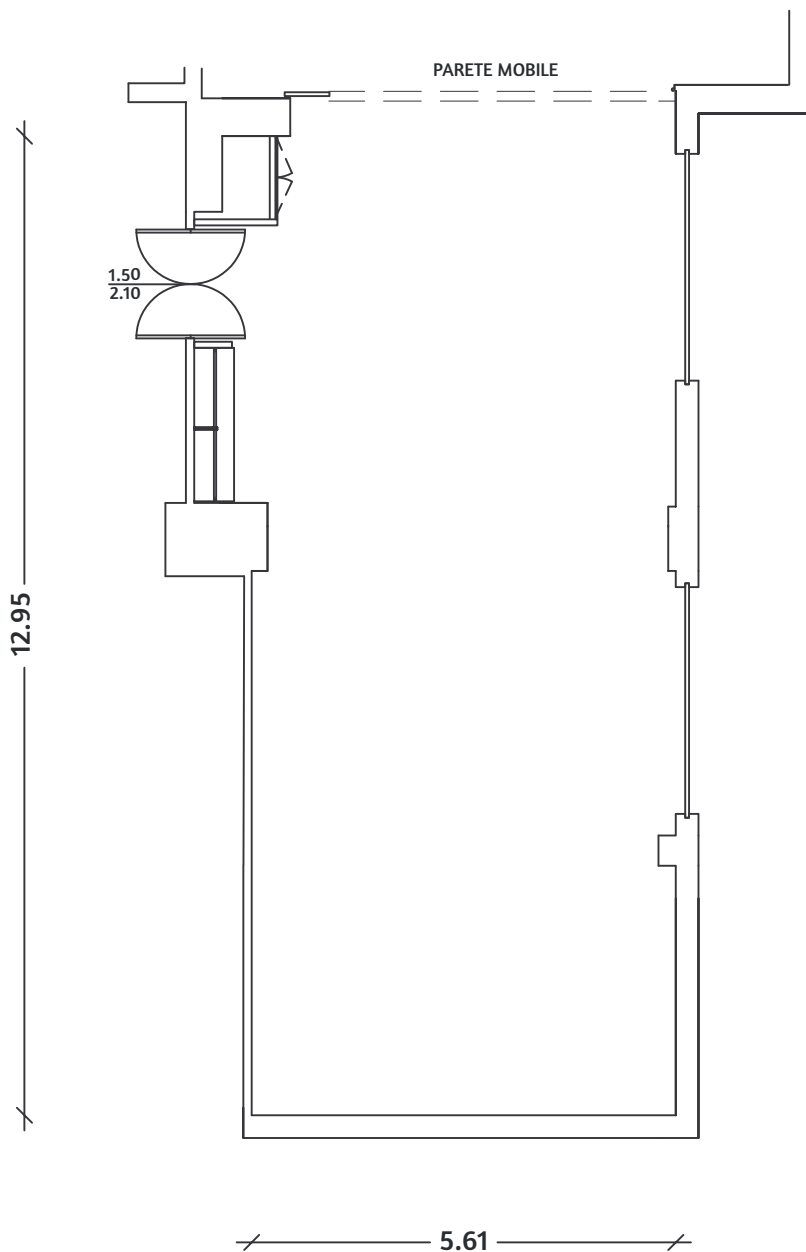
EDIFICIO ATLANTE | PIANO PRIMO



SCALA 1:100

SALA SIRIO

MQ 77 | H 3 | PLATEA 100 | Ferro di Cavallo 30 | Tavola Rotonda 40



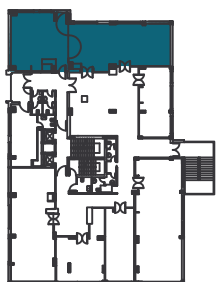
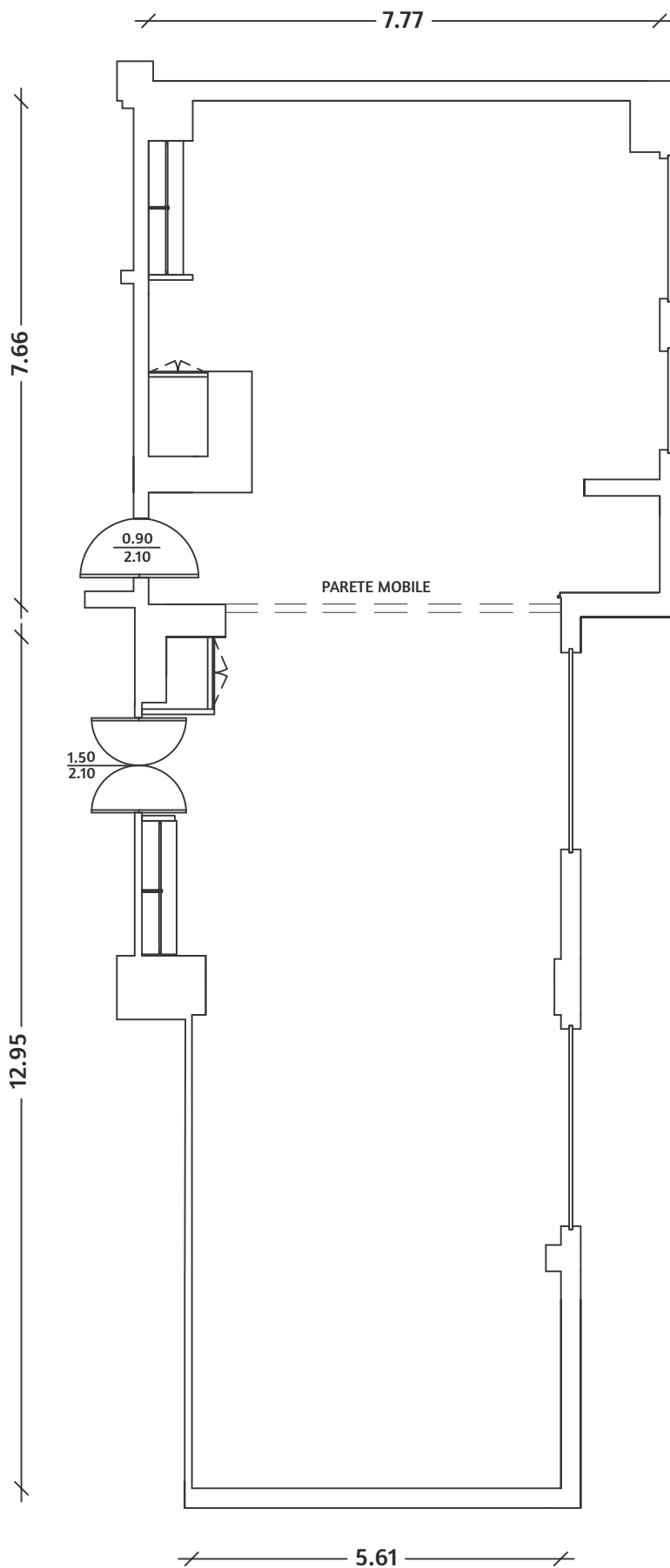
EDIFICIO PONENTE | PIANO PRIMO



SCALA 1:100

SALA SIRIO+ZODIACO

MQ 134 | H 3 | PLATEA 140 | Ferro di Cavallo 40 | Tavola Rotonda 50



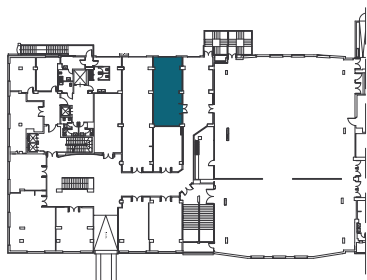
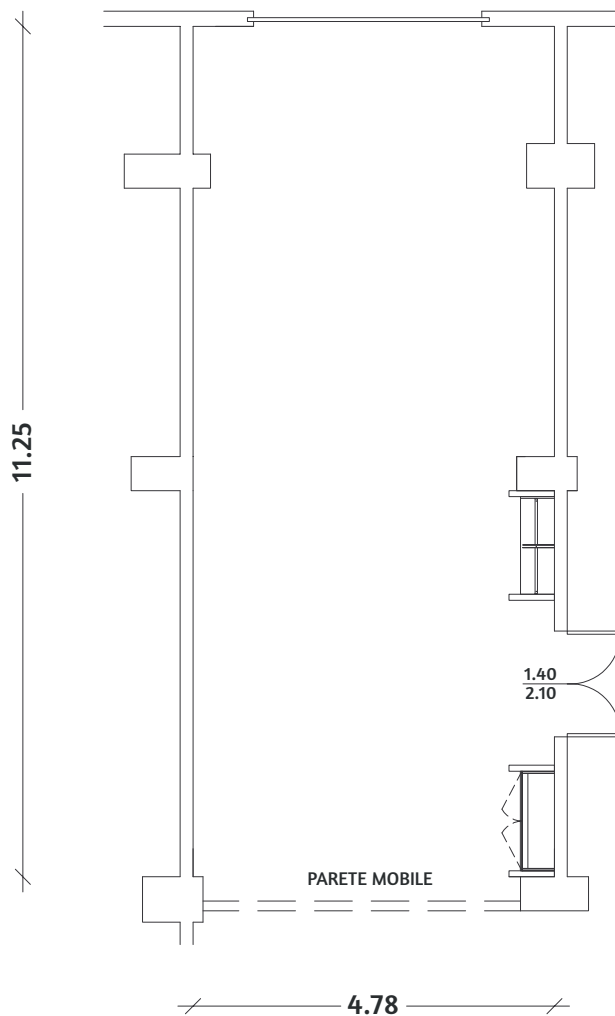
EDIFICIO PONENTE | PIANO PRIMO



SCALA 1:100

SALA VESPUCCI

MQ 54 | H 4 | PLATEA 40 | Ferro di Cavallo 30 | Tavola Rotonda 28



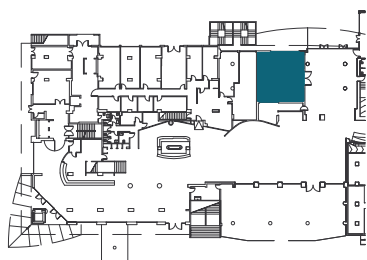
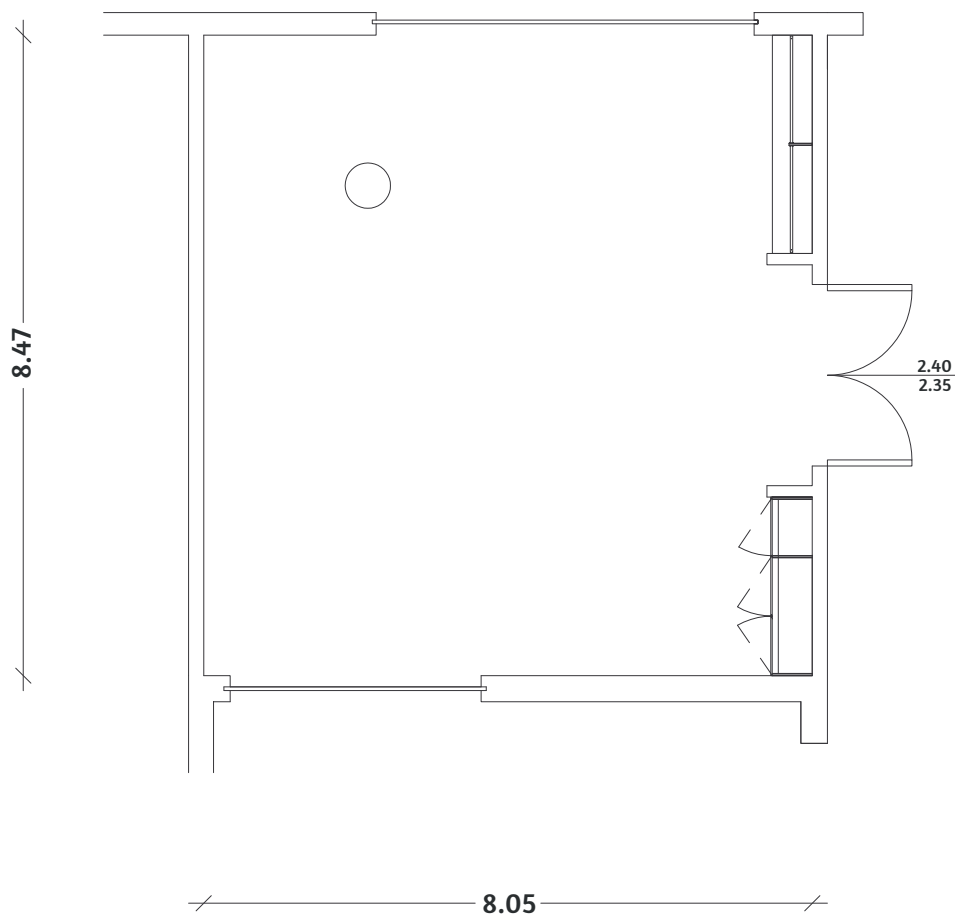
EDIFICIO SERENA | PIANO PRIMO



SCALA 1:100

SALA DELLO ZENIT

MQ 68 | H 3 | PLATEA 40 | Ferro di Cavallo 24 | Tavola Rotonda 22



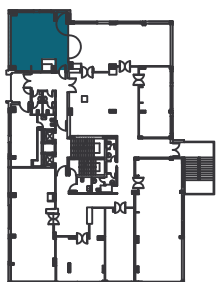
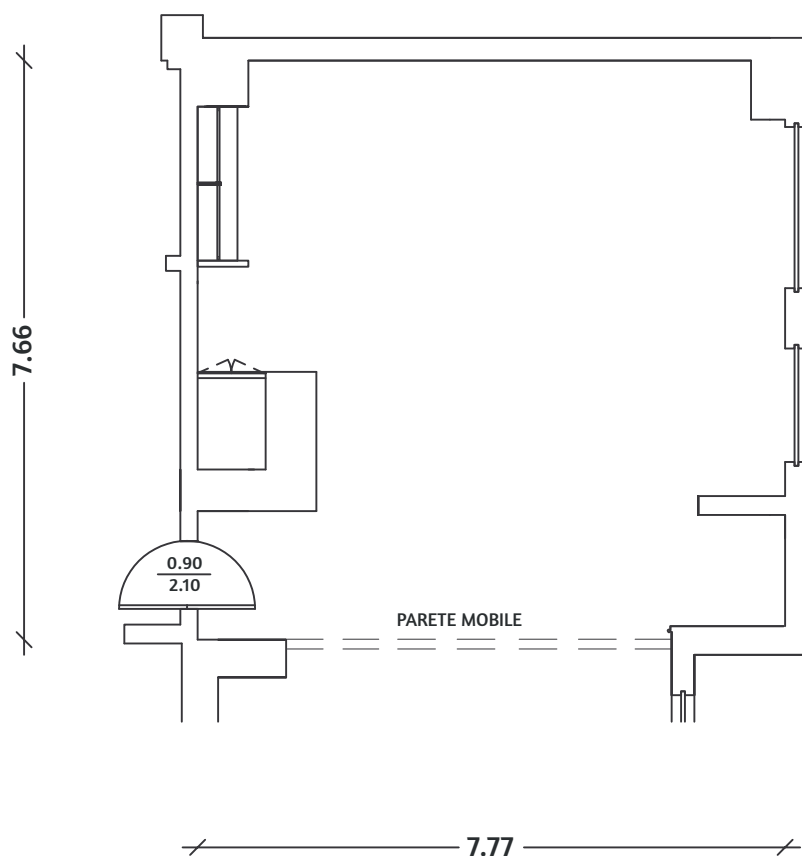
EDIFICIO SERENA | PIANO TERRA



SCALA 1:100

SALA ZODIACO

MQ 56 | H 3 | PLATEA 30 | Ferro di Cavallo 16 | Tavola Rotonda 20



EDIFICIO PONENTE | PIANO PRIMO



SCALA 1:100