



SALE CONGRESSI
CONGRESS ROOMS
SALLES DE CONFÉRENCE



789 CAMERE
 30 SALE CONGRESSUALI
 7 RISTORANTI
 6 PISCINE

CAMERE

- Classic Calanè
- Classic Valentino
- Superior Valentino

● SALE CONGRESSUALI

- 1 Sala Ethra
- 2 Sala Fiocco
- 3 Sala Bolina
- 4 Sala Stampa
- 5 Sala Libeccio
- 6 Sala Grecale
- 7 Atryum
- 8 Teatro all'aperto
- 9 Coquì Rosso 1
- 10 Coquì Rosso 2
- 11 Coquì Azzurro
- 12 Coquì Arancio 1
- 13 Coquì Arancio 2
- 14 Coquì Avorio Inferiore
- 15 Coquì Avorio Superiore

- 16 Alborèa
- 17 Club House
- 18 Sala Clarke
- 19 Anfiteatro
- 20 Sala Club
- 21/26 Piramidi 1/2/3/4/5/6
- 27 Sala Ambasz
- 28 Sala Panorama
- 29 Sala Kalidria
- 30 Lobby

● RISTORANTI

- 1 Calanè
- 2 Valentino
- 3 Alborèa
- 4 Kalidria
- 5 Scirò
- 6 Mediterraneo
- 7 Pizzeria Ethra

● HOTEL

- 1 Calanè
- 2 Valentino
- 3 Alborèa
- 4 Kalidria

● PISCINE

- 1 Mini Club
- 2 Calanè
- 3 Alborèa
- 4 Kalidria
- 5 Valentino
- 6 Ethra

SALE CONGRESSI - CONGRESS ROOMS

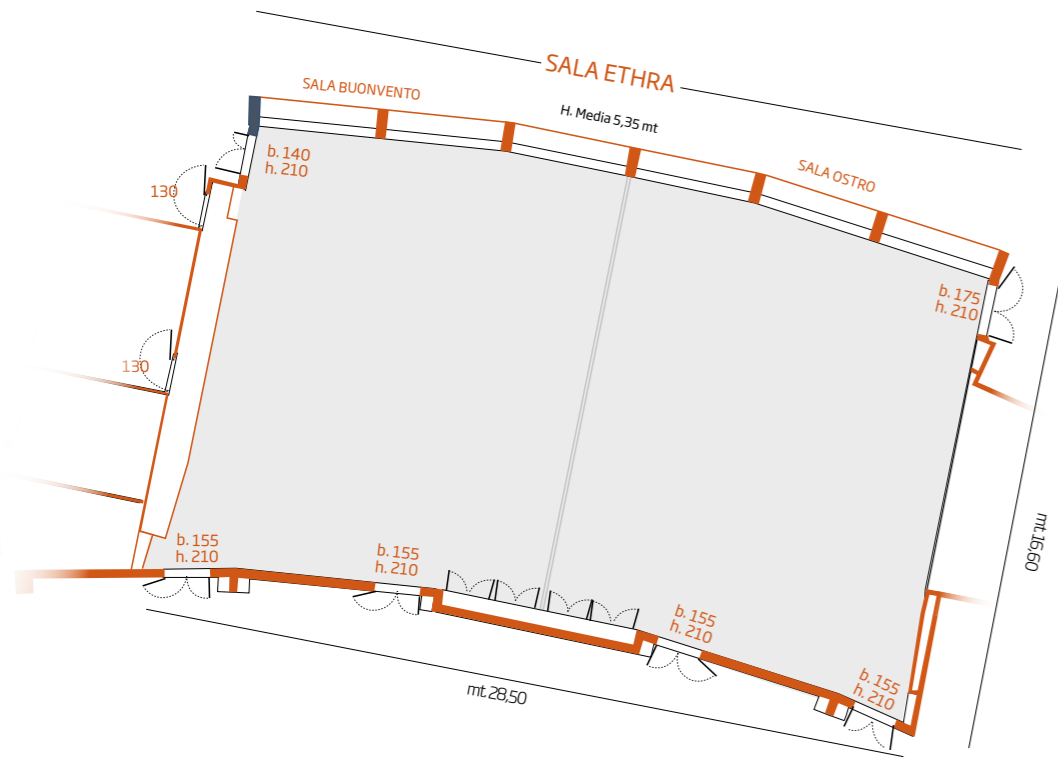
	SALA CONGRESSI	SUPERFICIE MQ	DIMENSIONI (Metri)	ALTEZZA (Metri)	ALLESTIMENTO / SET UP					LUCE NATURALE
					PLATEA THEATRE STYLE	CLASS ROOM	CABARET	FERRO DI CAVALLO U-SHAPE	TAVOLA ROTONDA BOARD ROOM	
CALANÈ HOTEL	SALA ETHRA	500	28,50X16,60	5,35	600	300	250	100	-	X
	- BUONVENTO	250	16,60X14,20	5,35	250	100	100	40	40	X
	- OSTRO	250	16,60X14,20	5,35	250	100	100	40	40	X
	FIOCCO	51	6,70X7,70	3,40	30	16	16	-	20	-
	BOLINA	51	6,70X7,70	3,40	30	16	16	-	20	-
	STAMPA	23	6,80X3,80	3,40	15	-	-	-	16	-
	LIBECCIO	35	8,60X4,30	3,40	30	16	-	20	20	-
	GRECALE	70	10,00X7,00	3,40	60	30	30	26	26	-
	ATRYUM	400	-	6,30	160	80	80	-	-	X
	TEATRO (All'aperto/Outdoor)	-	-	Open	400	-	-	-	-	-
ALBORÈA HOTEL	COQUÌ ROSSO 1	183	14,40X12,70	4,30	100	48	35	36	36	X
	COQUÌ ROSSO 2	141	12,50X11,30	4,30	70	32	28	24	24	X
	COQUÌ AZZURRO	160	15,50X10,30	4,30	70	20	20	32	32	X
	COQUÌ ARANCIO 1	125	13,30X9,40	4,30	70	36	24	32	32	X
	COQUÌ ARANCIO 2	200	15,20X13,10	4,30	120	30	21	36	36	X
	COQUÌ AVORIO INFERIORE	174	18,50X9,20	3,90	70	30	20	16	16	X
	COQUÌ AVORIO SUPERIORE	174	18,52X9,36	3,90	60	30	28	32	32	X
	ALBORÈA	10,30	2,70X3,90	2,70	-	-	-	-	6	X
	CLUB HOUSE	560	-	6,95	300	200	150	50	-	X

	SALA CONGRESSI	SUPERFICIE MQ	DIMENSIONI (Metri)	ALTEZZA (Metri)	ALLESTIMENTO / SET UP					LUCE NATURALE
					PLATEA THEATRE STYLE	CLASS ROOM	CABARET	FERRO DI CAVALLO U-SHAPE	TAVOLA ROTONDA BOARD ROOM	
VALENTINO HOTEL	CLARKE	180	-	4	150	-	-	-	-	X
	ANFITEATRO (All'aperto/Outdoor)	-	-	Open	1.000	-	-	-	-	X
	SALA CLUB	150	15,80X9,70	2,90	100	30	35	-	-	X
	PIRAMIDI	1.000	44,80X28,50	3,50/7,30	1.000	500	-	-	-	X
	PIRAMIDI 1	150	12,50X12,50	3,50/7,30	150	70	40	32	32	X
	PIRAMIDI 2	200	16,15X12,50	3,50/7,30	200	120	70	40	40	X
	PIRAMIDI 3	200	16,15X12,50	3,50/7,30	200	120	70	40	40	X
	PIRAMIDI 4	270	16,15X16,50	3,50/7,30	300	200	120	40	40	X
	PIRAMIDI 5	200	16,15X12,50	3,50/7,30	200	120	70	40	40	X
	PIRAMIDI 6	150	12,50X12,50	3,50/7,30	200	70	70	32	32	X
KALIDRIA HOTEL	AMBASZ	230	21,80X7,70	3,70	130	60	60	50	-	X
	- GIARDINO	145	7,60X15,80	3,70	70	30	35	30	-	X
	- LIBRARY	85	9,60X8,90	3,10	60	30	30	22	-	-
	PANORAMA	84	14,00X6,00	3,70	45	20	-	24	24	X
	KALIDRIA	11	4,00X2,75	2,70	-	-	-	-	6	-
LOBBY	25	6,60X6,00	2,70	10	4	-	-	-	-	

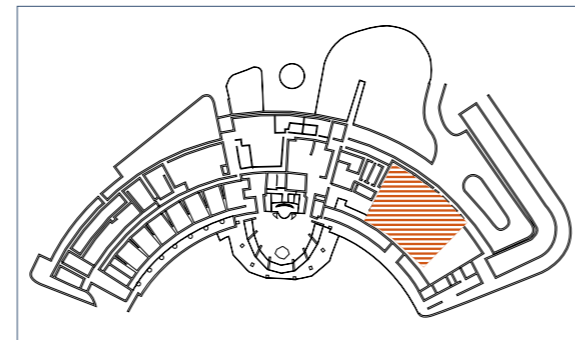
SALA ETHRA (Sala Buonvento + Sala Ostro)

Metri quadri superficie = **500 mq**
Altezza Media = **5,35 mt**

Platea = **600**
Classroom = **300**
Cabaret = **250**
Ferro di Cavallo = **100**



Calanè Hotel

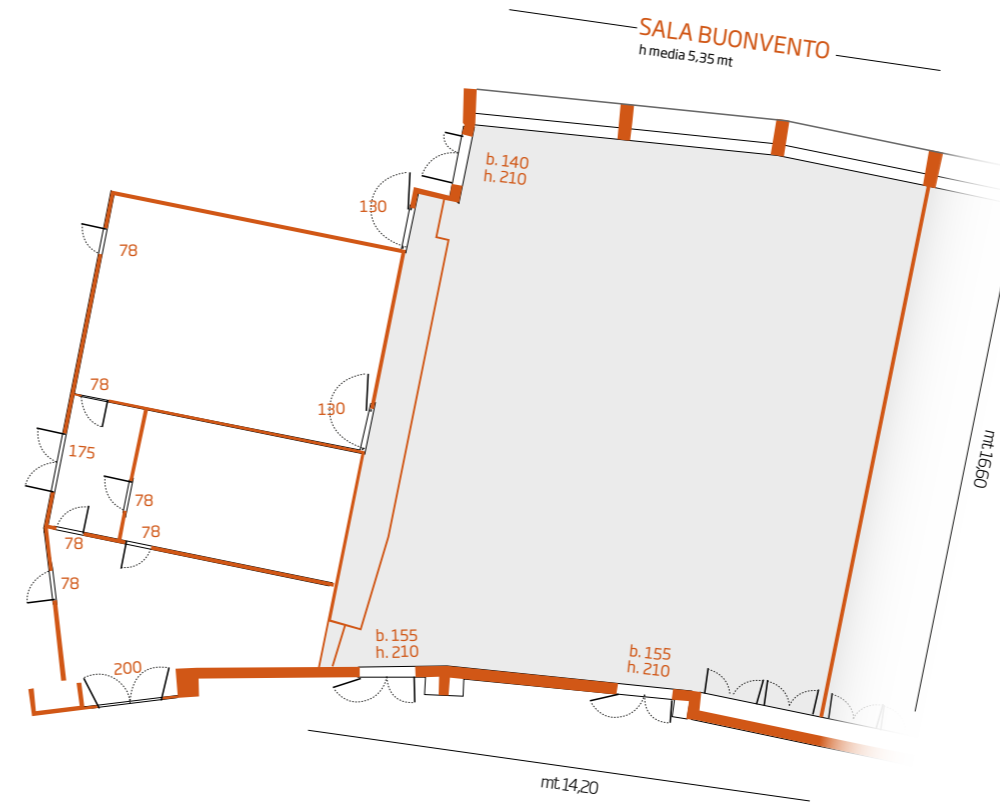


Sala Ethra | 2° piano

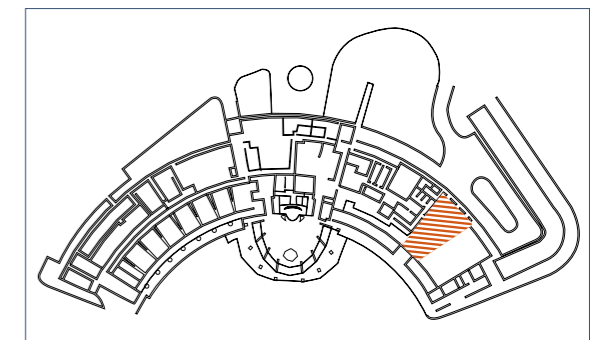
SALA BUONVENTO

Metri quadri superficie = **250 mq**
Altezza media = **5,35 mt**

Platea = **250**
Classroom = **100**
Cabaret = **100**
Ferro di Cavallo = **40**
Tavola Rotonda = **40**



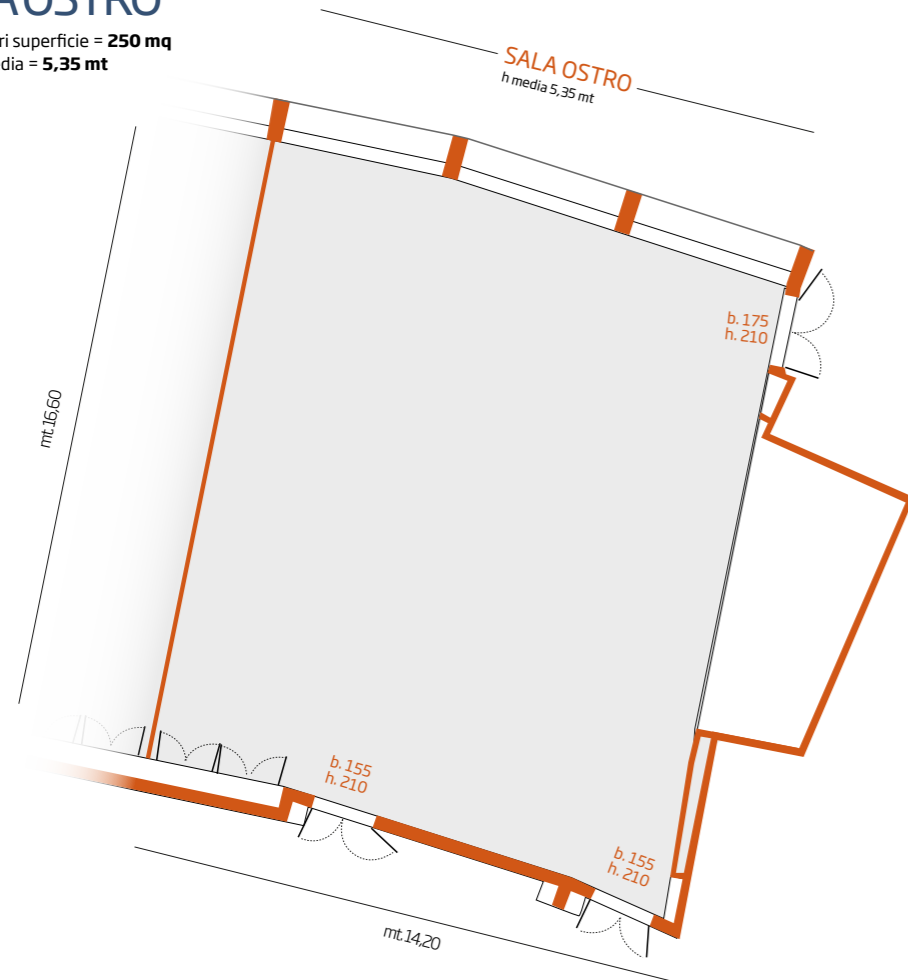
Calanè Hotel



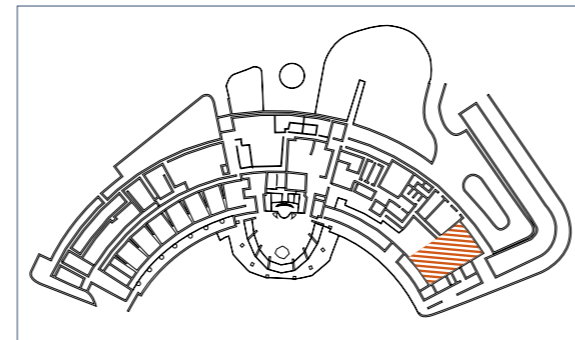
Sala Buonvento | 2° piano

SALA OSTRO

Metri quadri superficie = **250 mq**
Altezza media = **5,35 mt**



Calanè Hotel

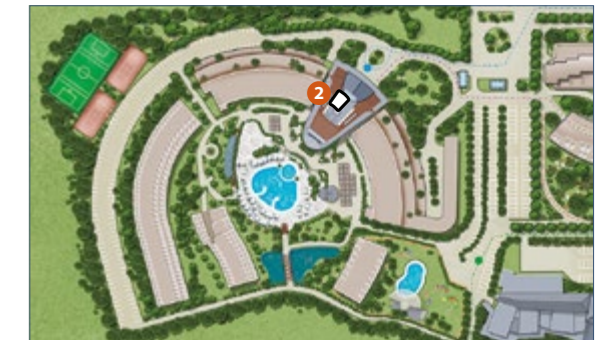
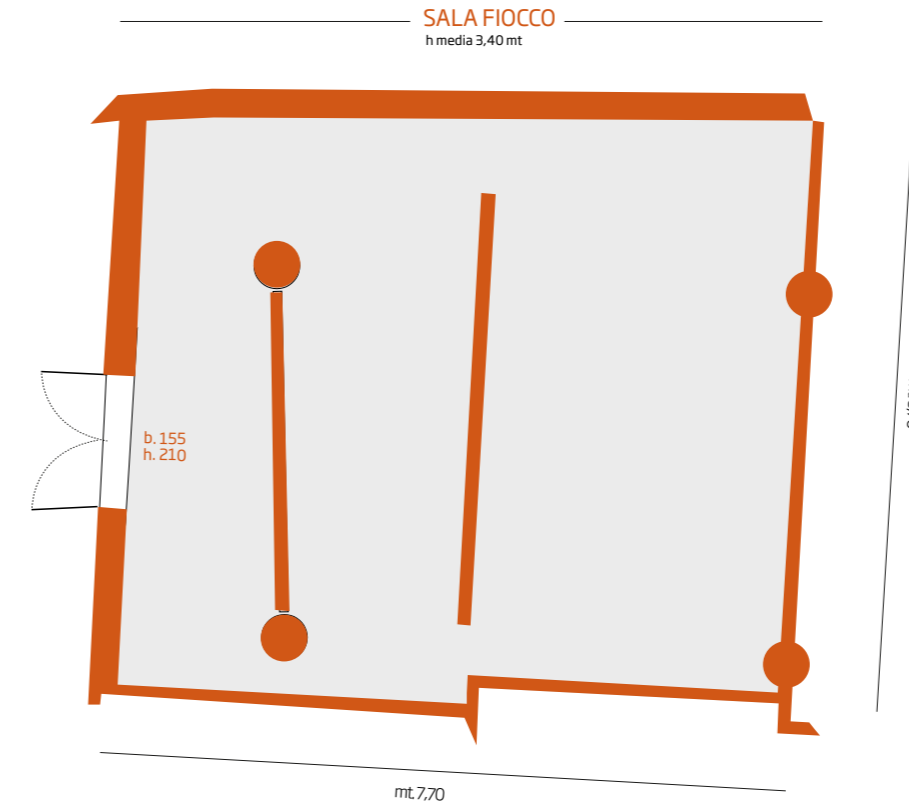


Sala Ostro | 2° piano

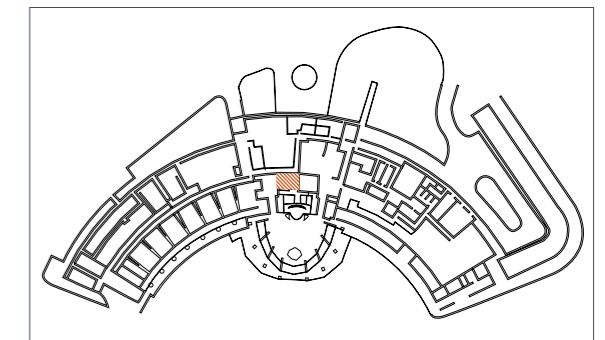
Platea = **250**
Classroom = **100**
Cabaret = **100**
Ferro di Cavallo = **40**
Tavola Rotonda = **40**

SALA FIOCCO

Metri quadri superficie = **51 mq**
Altezza media = **3,40 mt**



Calanè Hotel



Sala Fiocco | piano terra

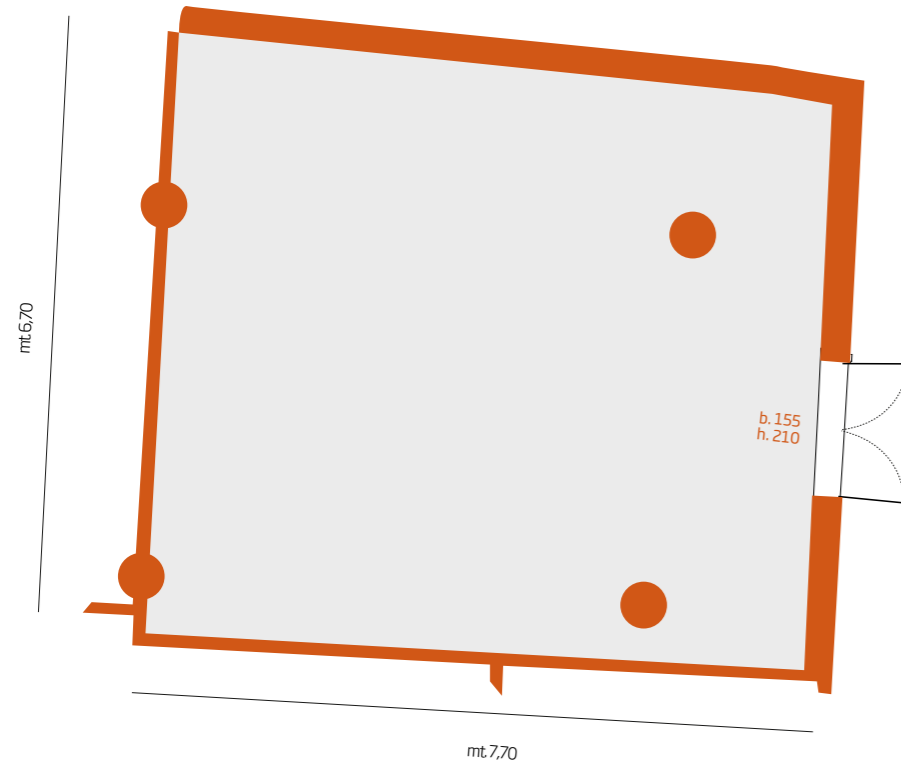
Platea = **30**
Classroom = **16**
Cabaret = **16**
Tavola Rotonda = **20**

SALA BOLINA

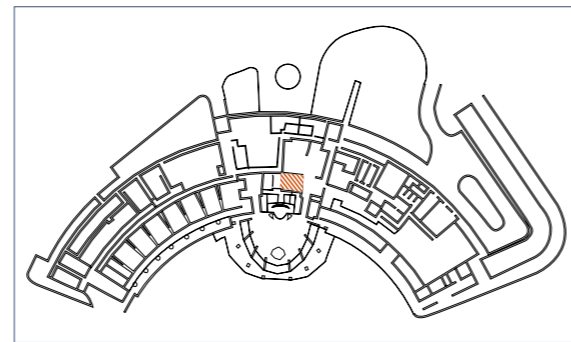
Metri quadri superficie = **51 mq**
Altezza media = **3,40 mt**

Platea = **30**
Classroom = **16**
Cabaret = **16**
Tavola Rotonda = **20**

SALA BOLINA
h media 3,40 mt



Calanè Hotel



Sala Bolina | piano terra

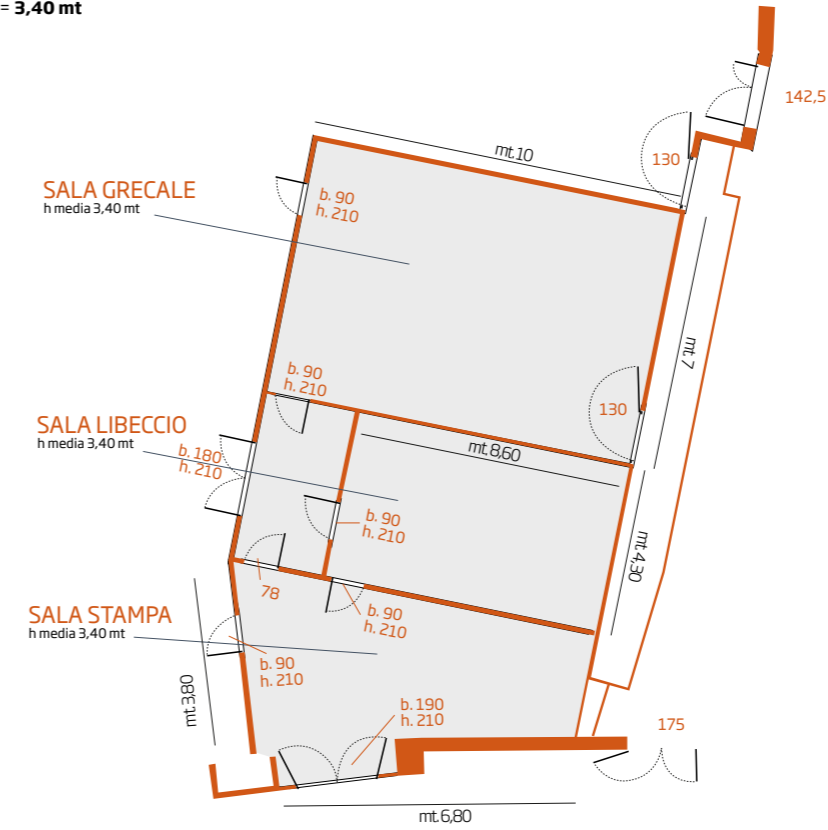
SALA GRECALE, SALA LIBECCIO, SALA STAMPA

Metri quadri superficie
SALA GRECALE = **70 mq**
SALA LIBECCIO = **35 mq**
SALA STAMPA = **23 mq**
Altezza media = **3,40 mt**

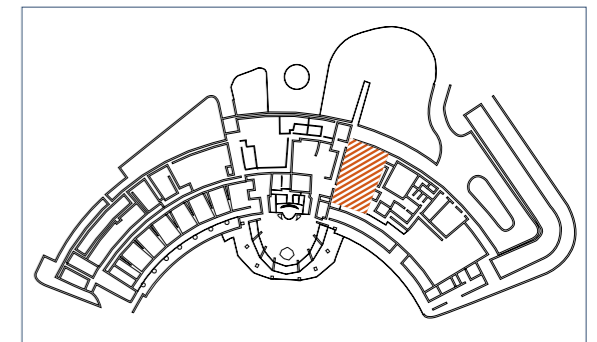
Sala Grecale
Platea = **60**
Classroom = **30**
Cabaret = **30**
Ferro di Cavallo = **26**
Tavola Rotonda = **26**

Sala Libeccio
Platea = **30**
Classroom = **16**
Ferro di Cavallo = **20**
Tavola Rotonda = **20**

Sala Stampa
Platea = **15**
Tavola Rotonda = **16**



Calanè Hotel

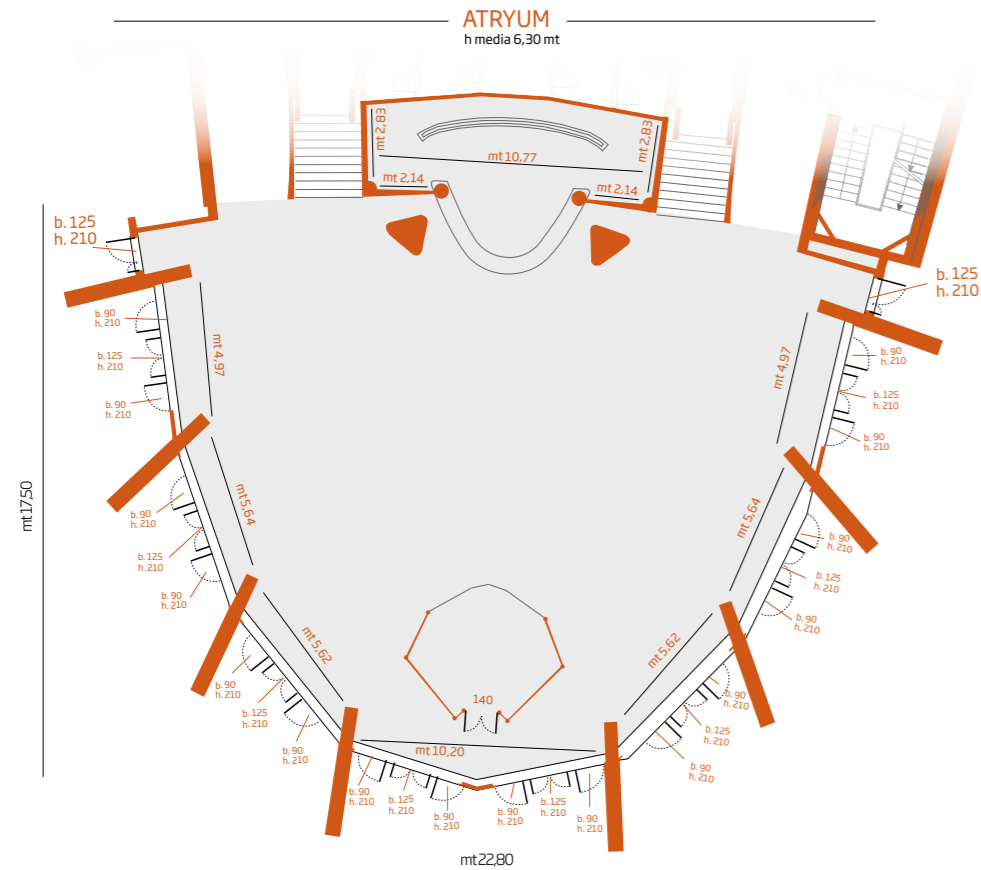


Sala Grecale, Libeccio, Stampa | 2° piano

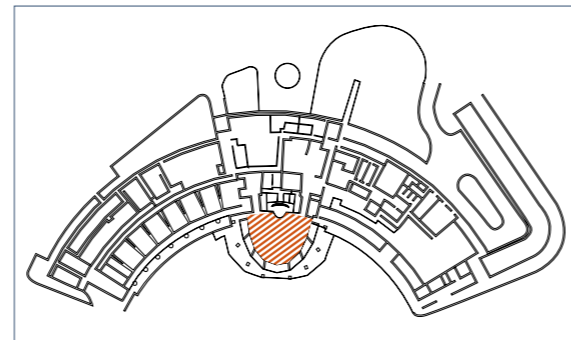
ATRYUM

Metri quadri superficie = **400 mq**
Altezza media = **6,30 mt**

Platea = **160**
Classroom = **80**
Cabaret = **80**



Calanè Hotel



Atryum | piano terra

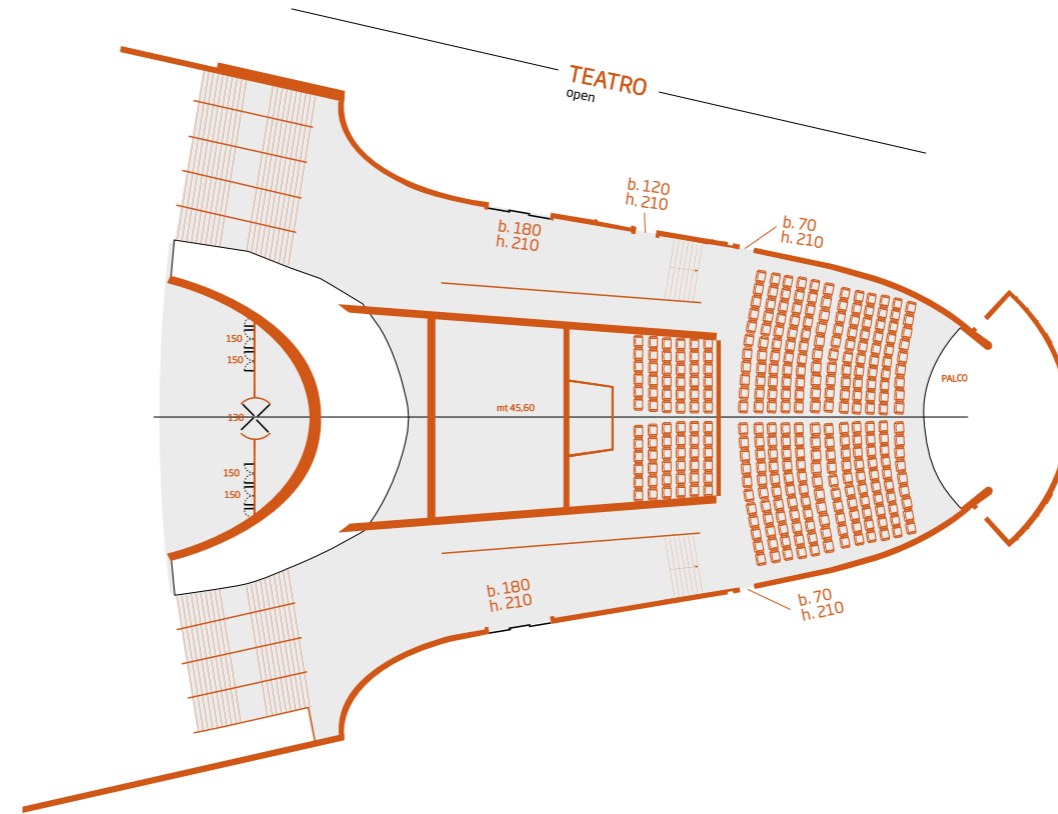
SCALA 1:150

7

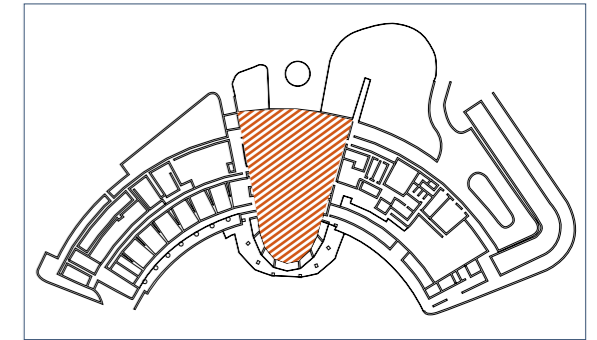
TEATRO

Metri quadri superficie = **OPEN**
Altezza media = **OPEN**

Platea = **400**



Calanè Hotel



Teatro | 2° piano

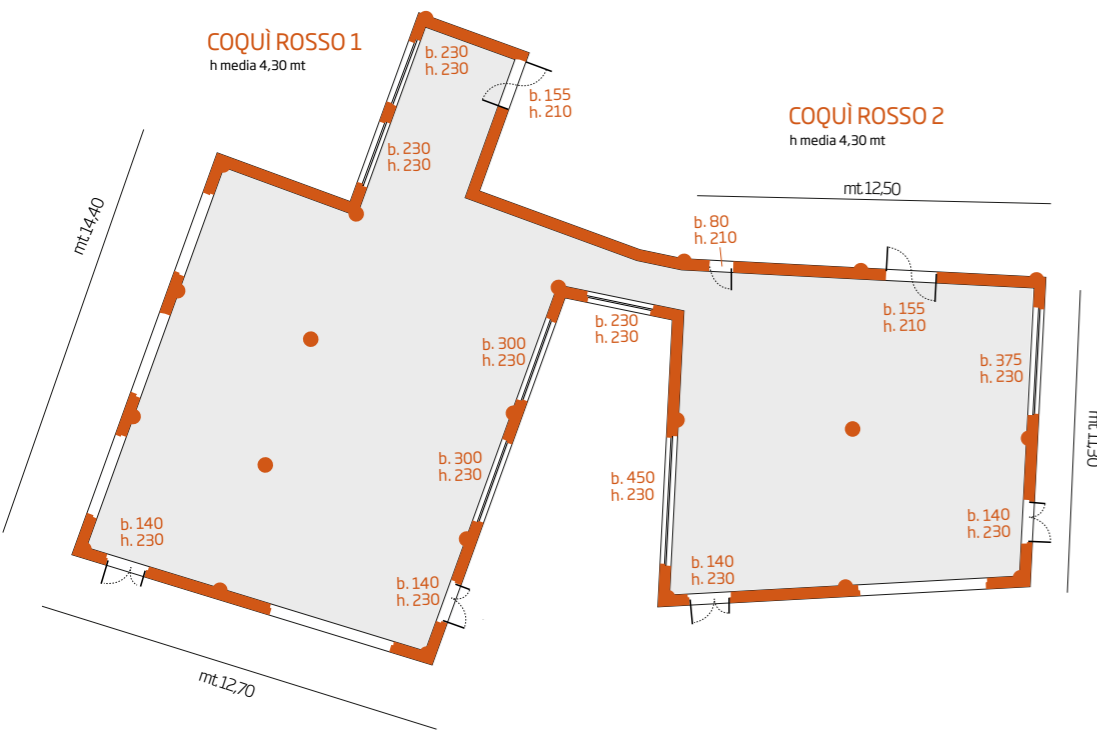
SCALA 1:200

8

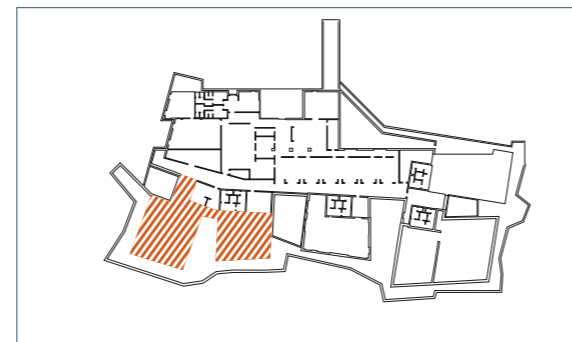
COQUÌ ROSSO 1 e 2

Metri quadri superficie
COQUÌ ROSSO 1 = **183 mq**
COQUÌ ROSSO 2 = **141 mq**
Altezza media = **4,30 mt**

Coqui Rosso 1	Coqui Rosso 2
Platea = 100	Platea = 70
Classroom = 48	Classroom = 32
Cabaret = 35	Cabaret = 28
Ferro di Cavallo = 36	Ferro di Cavallo = 24
Tavola Rotonda = 36	Tavola Rotonda = 24



Alborèa Hotel

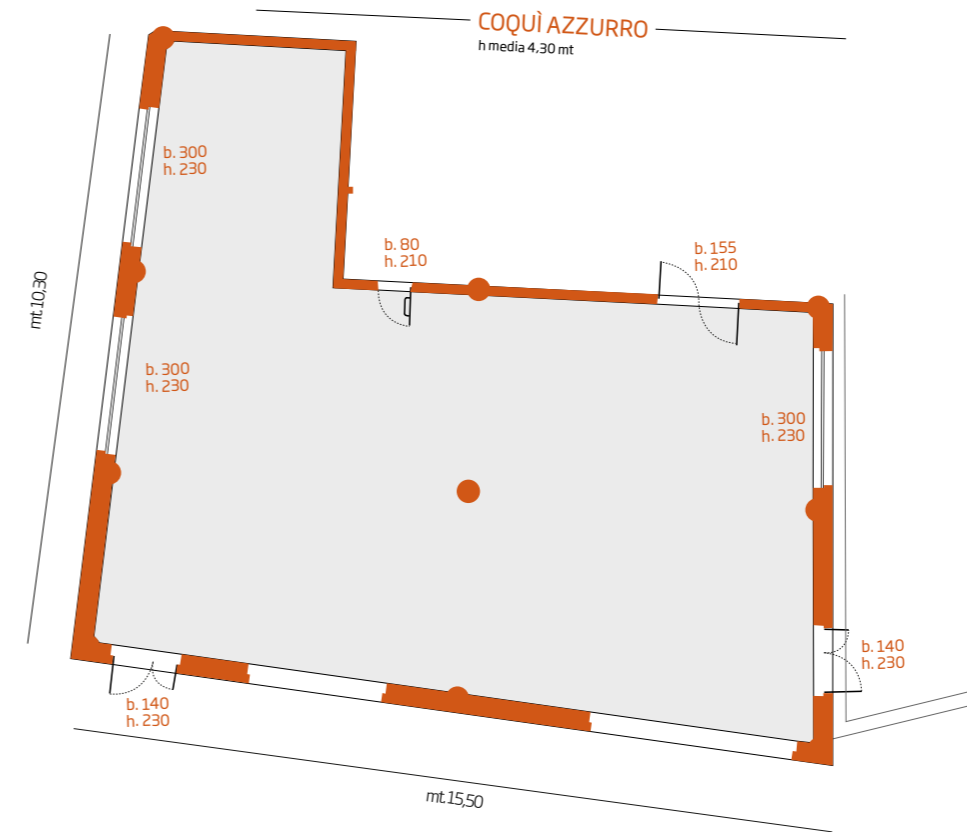


Coqui Rosso 1 e 2 | piano terra

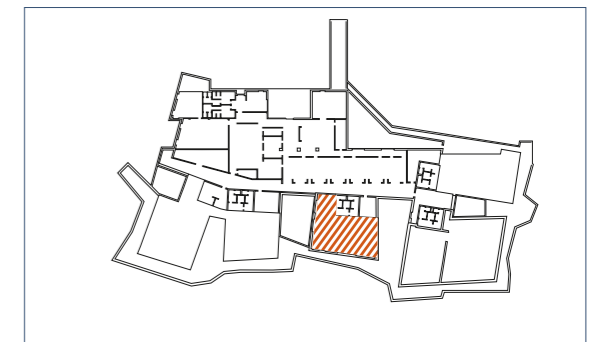
COQUÌ AZZURRO

Metri quadri superficie = **160 mq**
Altezza media = **4,30 mt**

Platea = **70**
Classroom = **20**
Cabaret = **20**
Ferro di cavallo = **32**
Tavola rotonda = **32**



Alborèa Hotel



Coqui Azzurro | piano terra

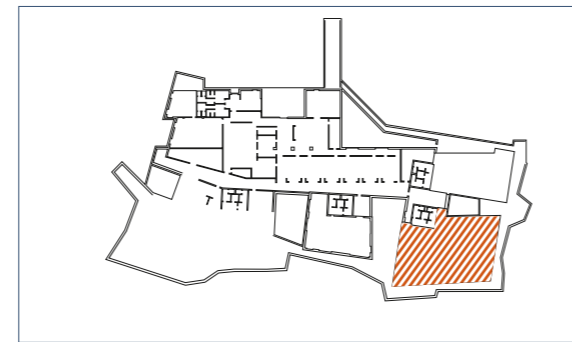
COQUÌ ARANCIO 1 e 2

Metri quadri superficie
COQUÌ ARANCIO 1 = **125 mq**
COQUÌ ARANCIO 2 = **200 mq**
Altezza media = **4,30 mt**

COQUÌ ARANCIO 2
h media 4,30 mt



Alborèa Hotel



Coquì Arancio 1 e 2 | piano terra

Coquì Arancio 1	Coquì Arancio 2
Platea = 70	Platea = 120
Classroom = 36	Classroom = 30
Cabaret = 24	Cabaret = 21
Ferro di Cavallo = 32	Ferro di Cavallo = 36
Tavola Rotonda = 32	Tavola Rotonda = 36

COQUÌ AVORIO inferiore

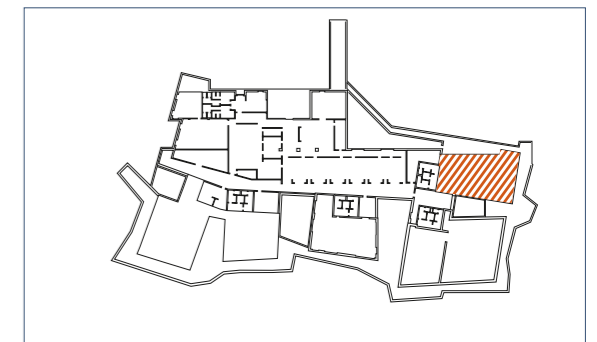
Metri quadri superficie = **174 mq**
Altezza media = **3,90 mt**

Platea = 70
Classroom = 30
Cabaret = 20
Ferro di cavallo = 16
Tavola rotonda = 16

COQUÌ AVORIO
h media 3,90 mt



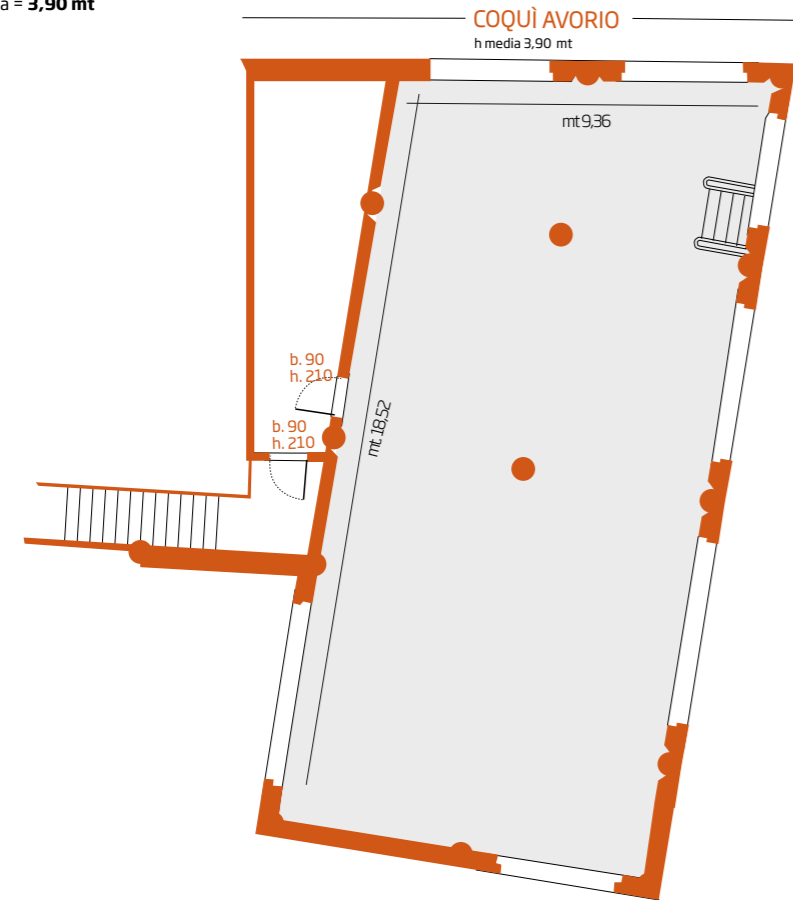
Alborèa Hotel



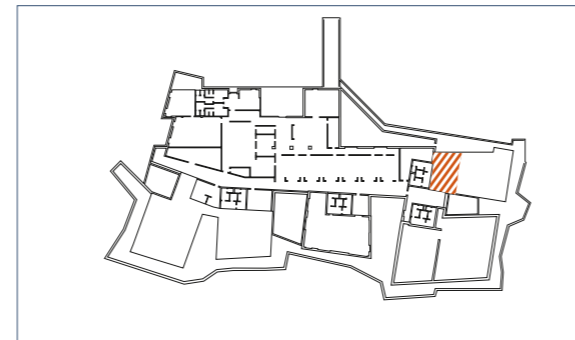
Coquì Avorio Inferiore | 1° piano

COQUÌ AVORIO superiore

Metri quadri superficie = **174 mq**
Altezza media = **3,90 mt**



Alborèa Hotel

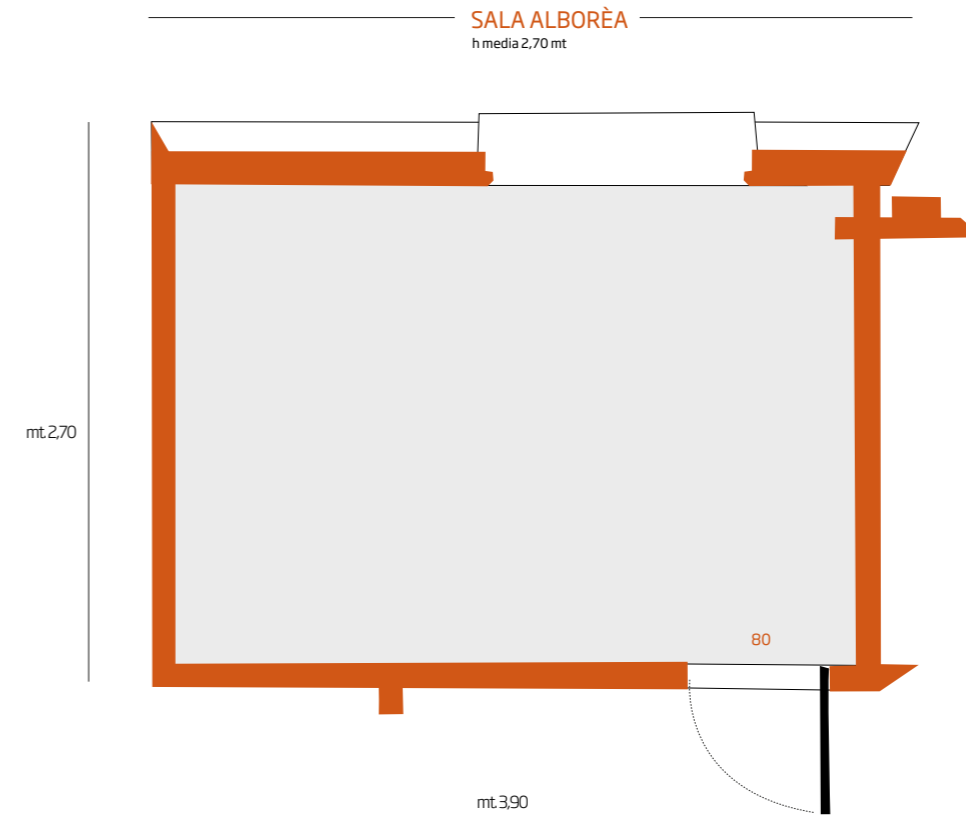


Coquì Avorio Superiore | 1° piano

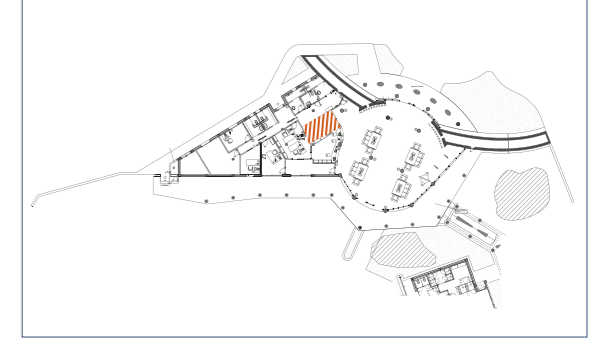
Platea = **60**
Classroom = **30**
Cabaret = **28**
Ferro di cavallo = **32**
Tavola rotonda = **32**

SALA ALBORÈA

Metri quadri superficie = **10,30 mq**
Altezza = **2,70 mt**



Alborèa Hotel

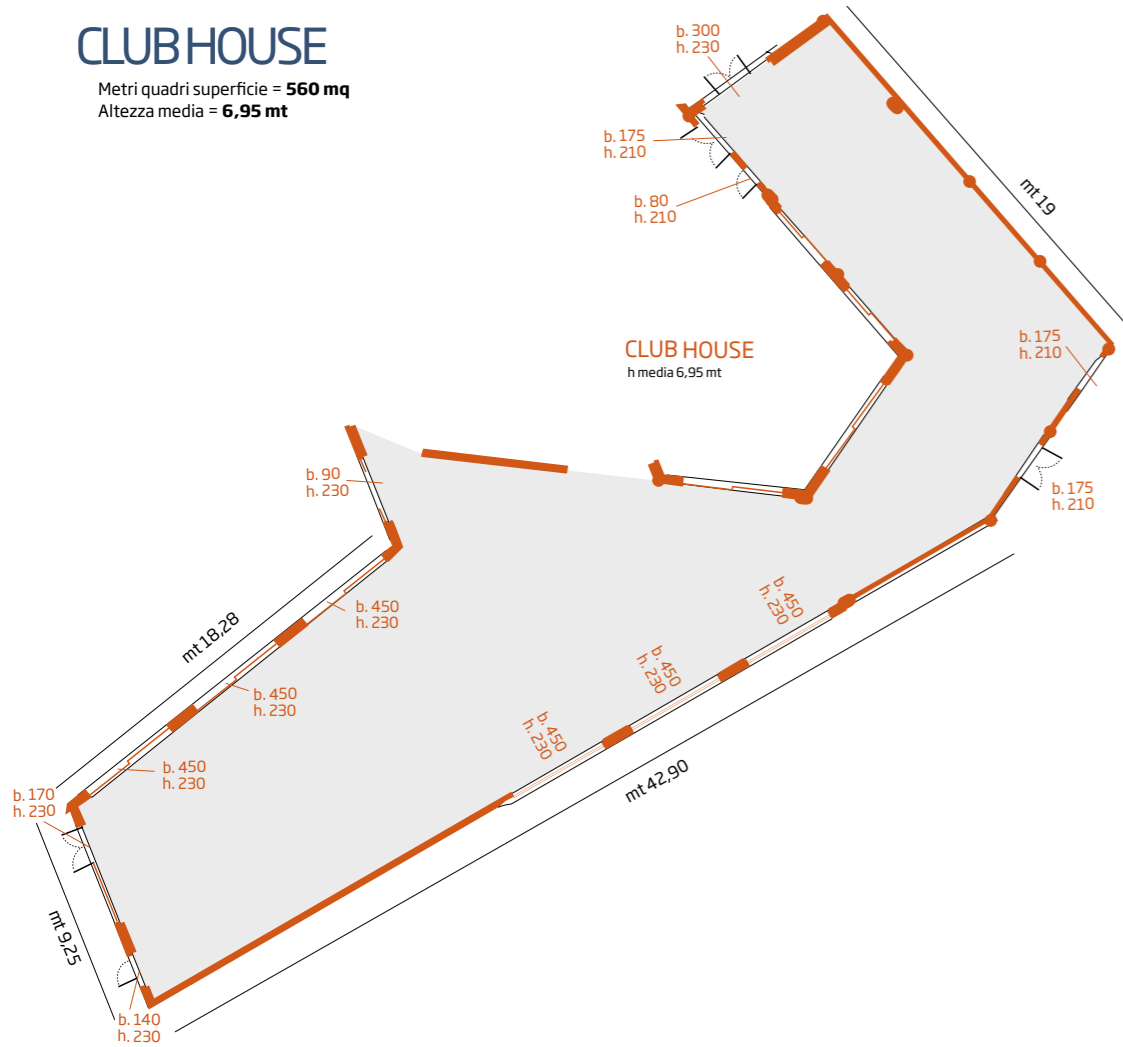


Sala Alborèa | piano terra

Tavola rotonda = **6**

CLUBHOUSE

Metri quadri superficie = **560 mq**
Altezza media = **6,95 mt**



Alborèa Hotel



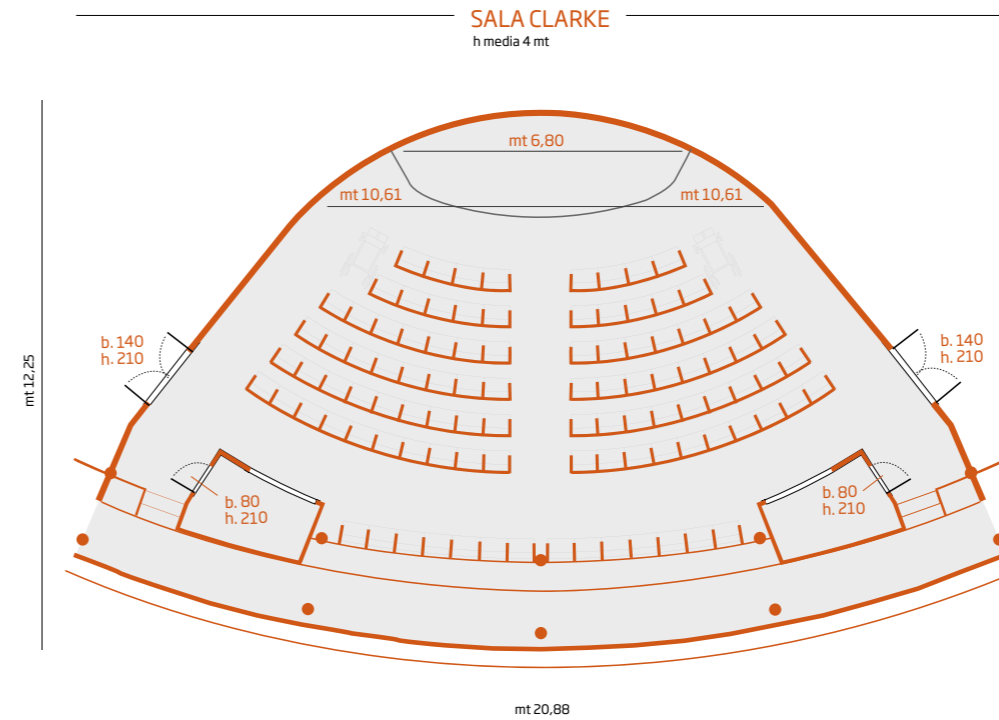
Club House | piano terra

Platea = **300**
Classroom = **200**
Cabaret = **150**
Ferro di Cavallo = **50**

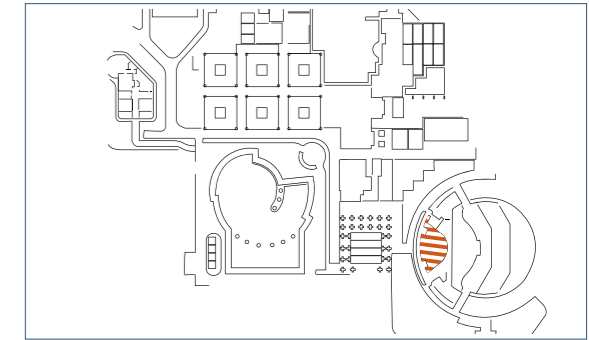
SALA CLARKE

Metri quadri superficie = **180 mq**
Altezza media = **4 mt**

Platea = **150**



Valentino Hotel



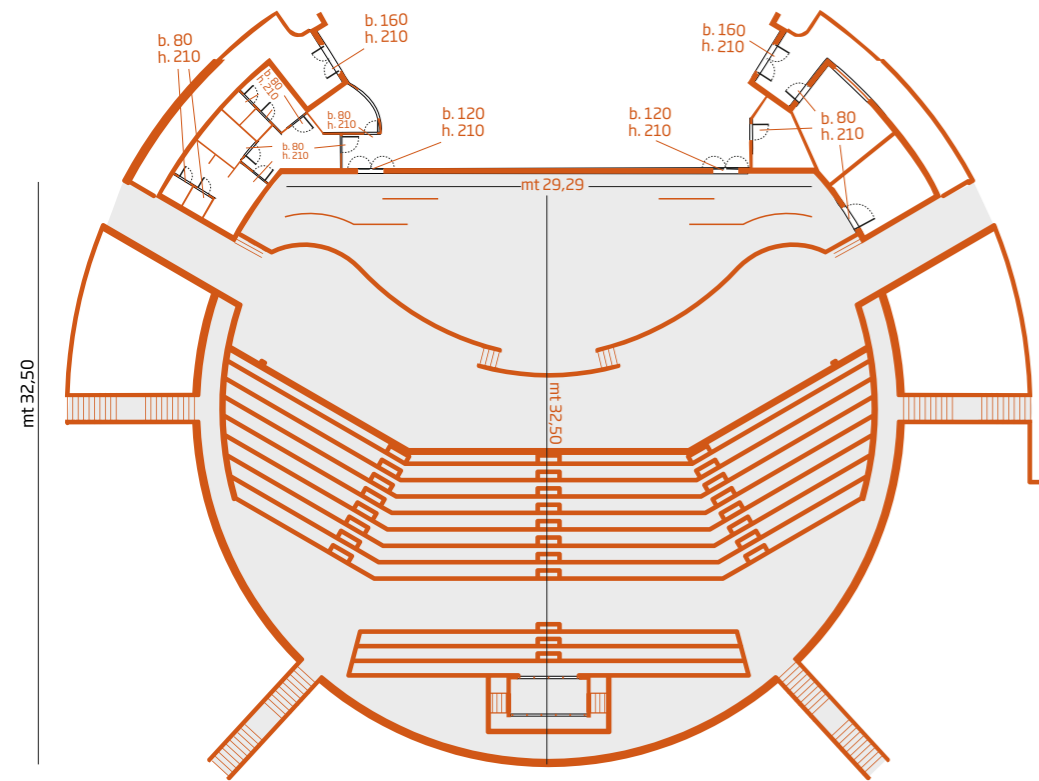
Sala Clarke | piano rialzato

ANFITEATRO

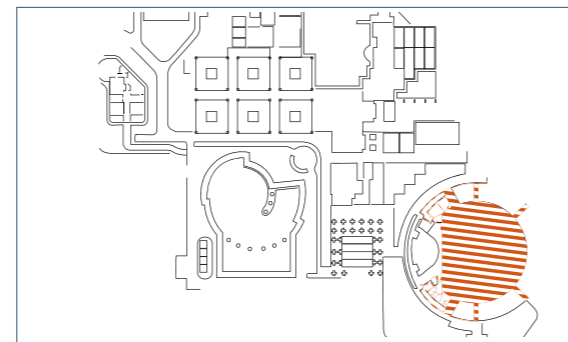
Altezza media = **Open**

Platea = **1.000**

ANFITEATRO



Valentino Hotel



Anfiteatro | piano terra

SCALA 1:200

19

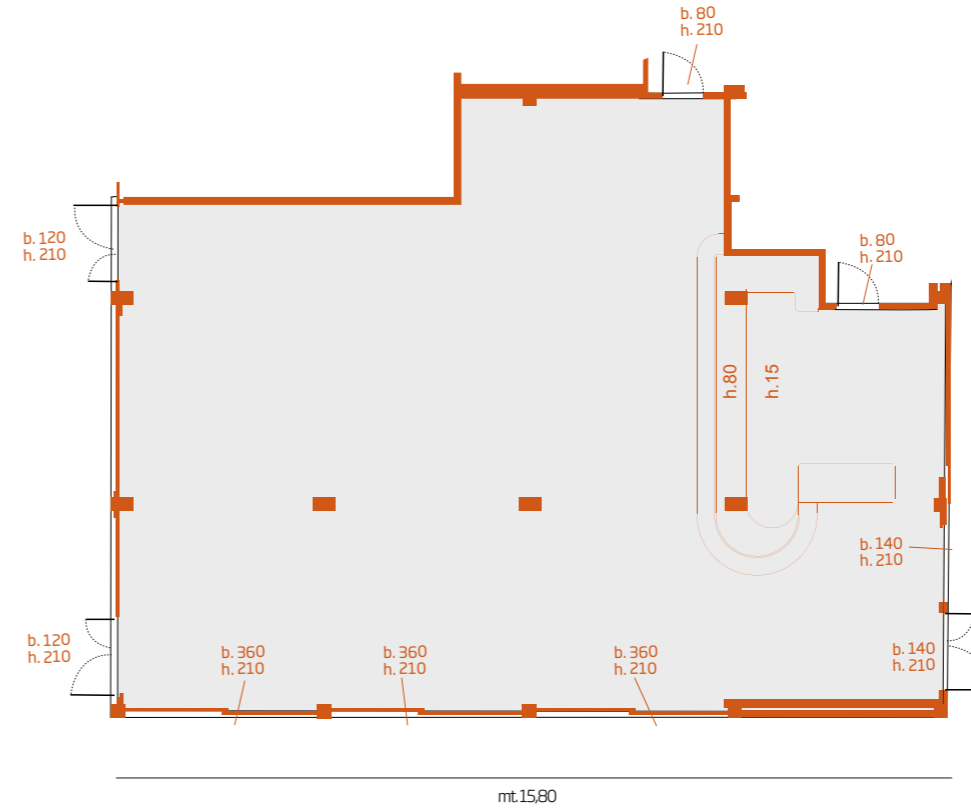
SALA CLUB

Metri quadri superficie = **150 mq**
Altezza media = **2,90 mt**

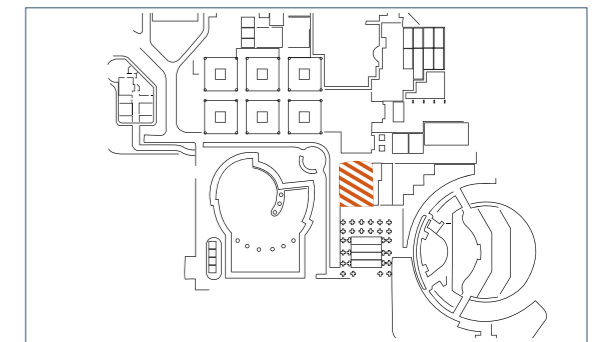
Platea = **100**
Classroom = **30**
Cabaret = **35**

SALA CLUB

h media 2,90 mt



Valentino Hotel



Sala Club | piano terra

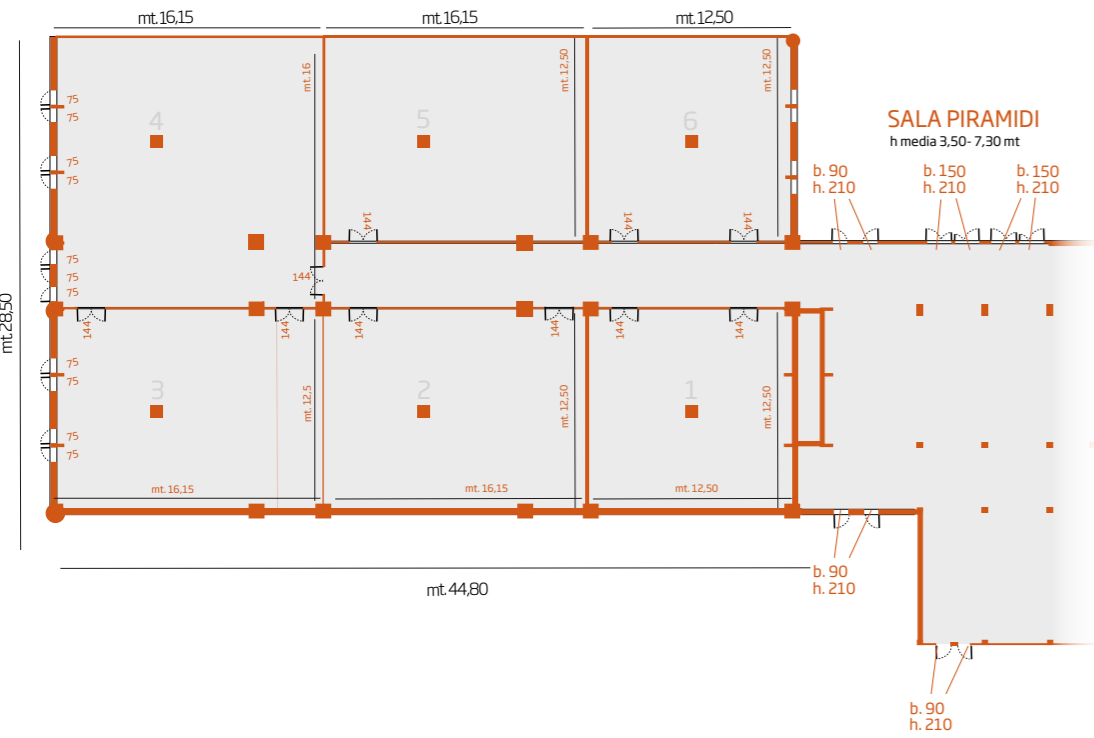
SCALA 1:150

20

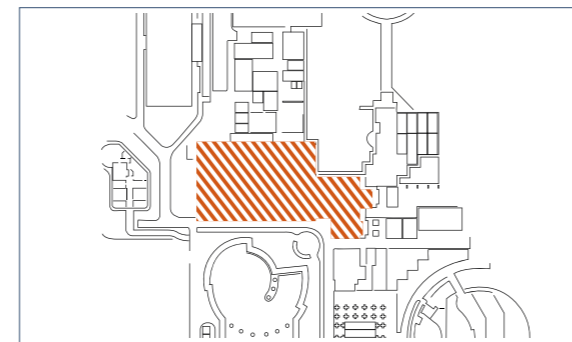
SALA PIRAMIDI

Metri quadri superficie = **1.000 mq**
Altezza media = **3,50 - 7,30 mt**

Platea = **1.000**
Classroom = **500**



Valentino Hotel



Sala Piramidi | piano terra

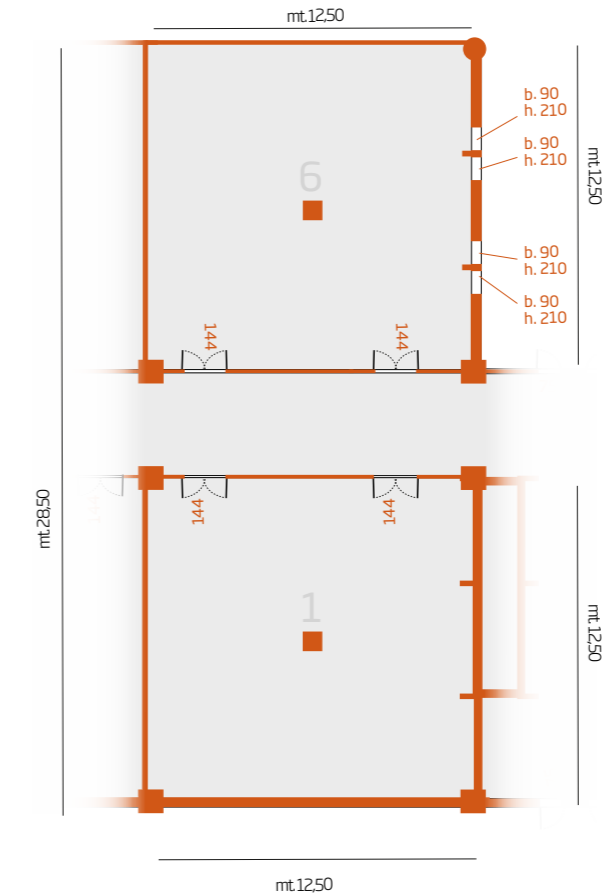
SALA PIRAMIDI 1-6

Metri quadri superficie = **356,25 mq**
Altezza media = **3,50 - 7,30 mt**

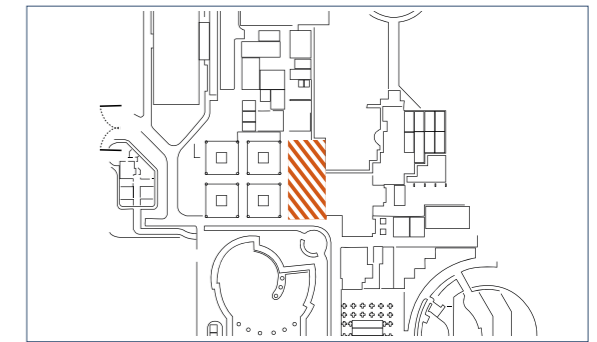
SALA PIRAMIDI 1-6
h media 3,50 - 7,30 mt

SALA PIRAMIDI - sala 1
Platea = **150**
Classroom = **70**
Cabaret = **40**
Ferro di Cavallo = **32**
Tavola Rotonda = **32**

SALA PIRAMIDI - sala 6
Platea = **200**
Classroom = **70**
Cabaret = **70**
Ferro di Cavallo = **32**
Tavola Rotonda = **32**



Valentino Hotel

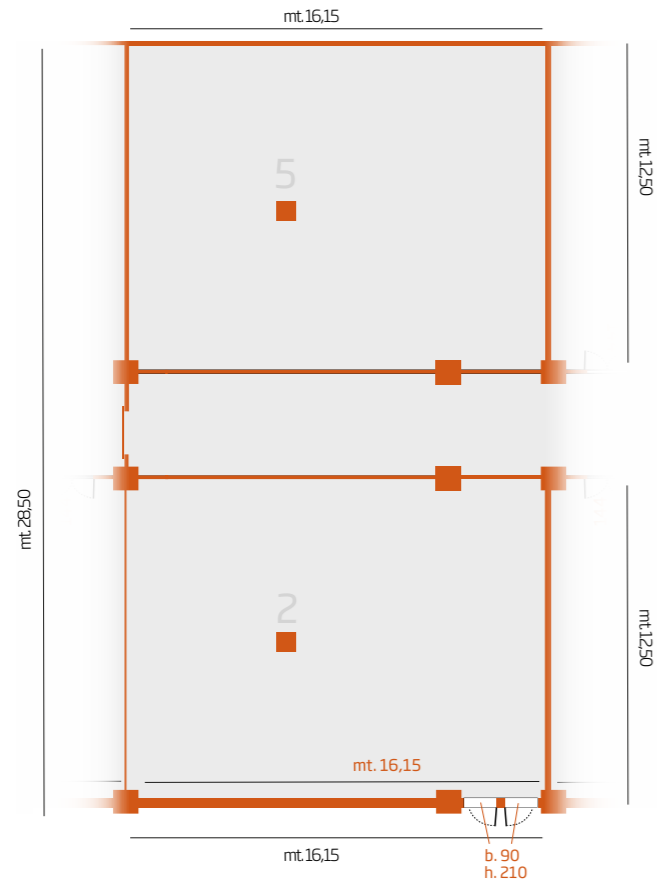


Sala Piramidi 1-6 | piano terra

SALA PIRAMIDI 2-5

Metri quadri superficie = **400 mq**
Altezza media = **3,50 - 7,30 mt**

SALA PIRAMIDI 2-5
h media 3,50- 7,30 mt

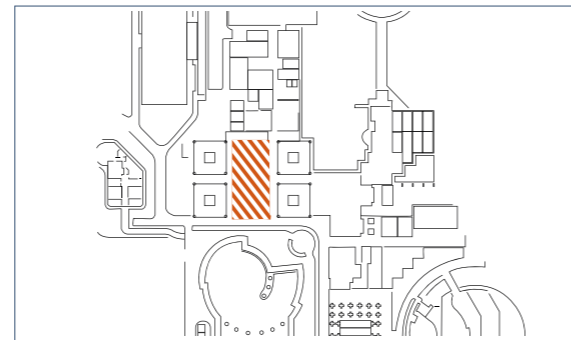


SALA PIRAMIDI - sala 2
Platea = **200**
Classroom = **120**
Cabaret = **70**
Ferro di Cavallo = **40**
Tavola Rotonda = **40**

SALA PIRAMIDI - sala 5
Platea = **200**
Classroom = **120**
Cabaret = **70**
Ferro di Cavallo = **40**
Tavola Rotonda = **40**



Valentino Hotel

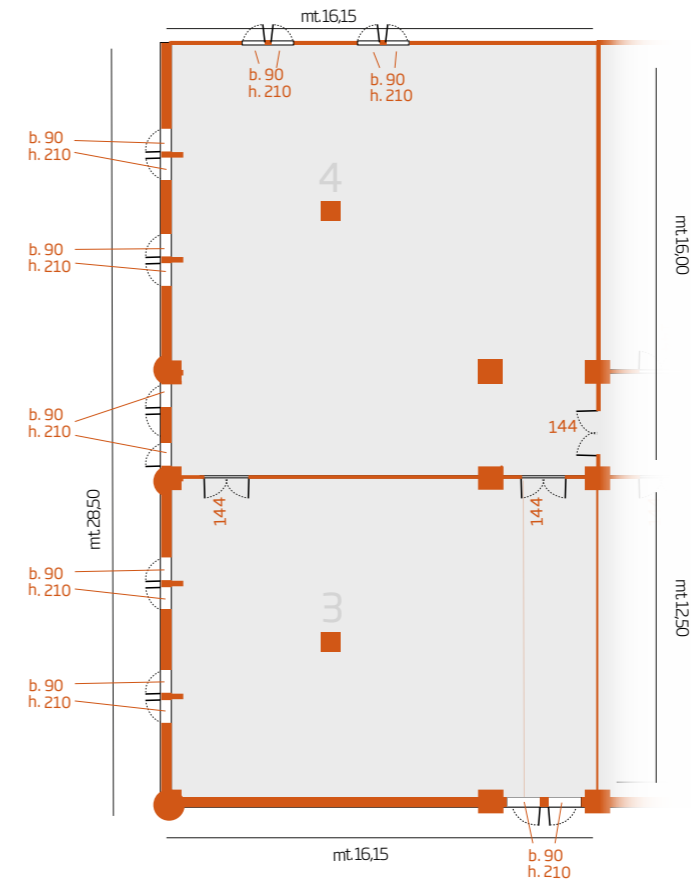


Sala Piramidi 2-5 | piano terra

SALA PIRAMIDI 3-4

Metri quadri superficie = **470,25 mq**
Altezza media = **3,50 - 7,30 mt**

SALA PIRAMIDI 3-4
h media 3,50 - 7,30 mt

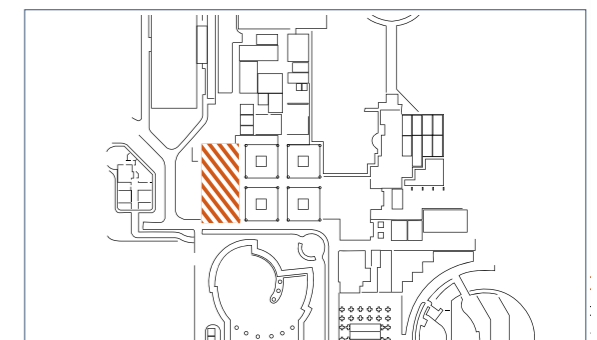


SALA PIRAMIDI - sala 3
Platea = **200**
Classroom = **120**
Cabaret = **70**
Ferro di Cavallo = **40**
Tavola Rotonda = **40**

SALA PIRAMIDI - sala 4
Platea = **300**
Classroom = **200**
Cabaret = **120**
Ferro di Cavallo = **40**
Tavola Rotonda = **40**



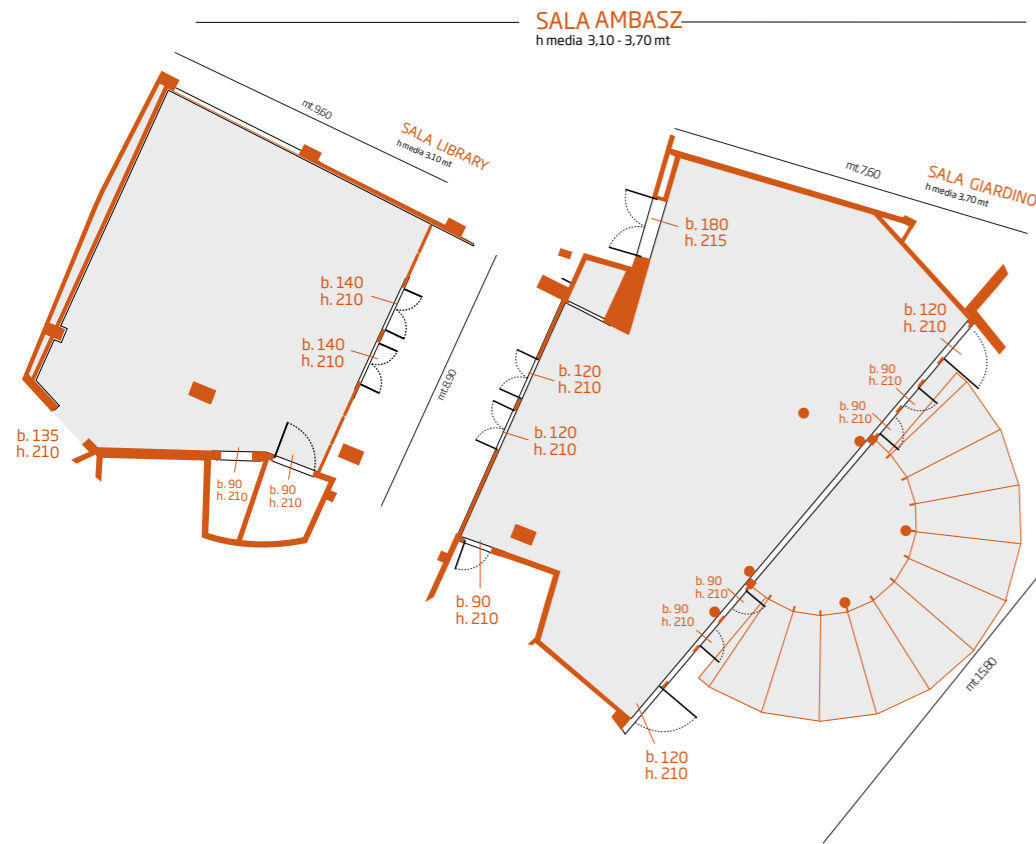
Valentino Hotel



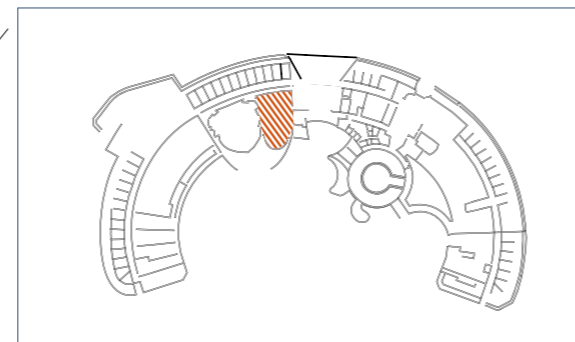
Sala Piramidi - 3-4 | piano terra

SALA AMBASZ (Sala Giardino + Sala Library)

Metri quadri superficie = **230 mq**
Altezza media = **3,10 - 3,70 mt**



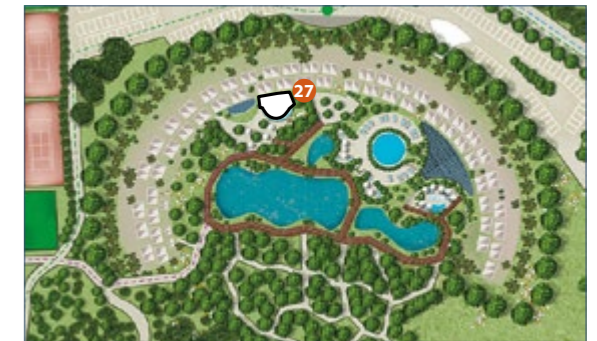
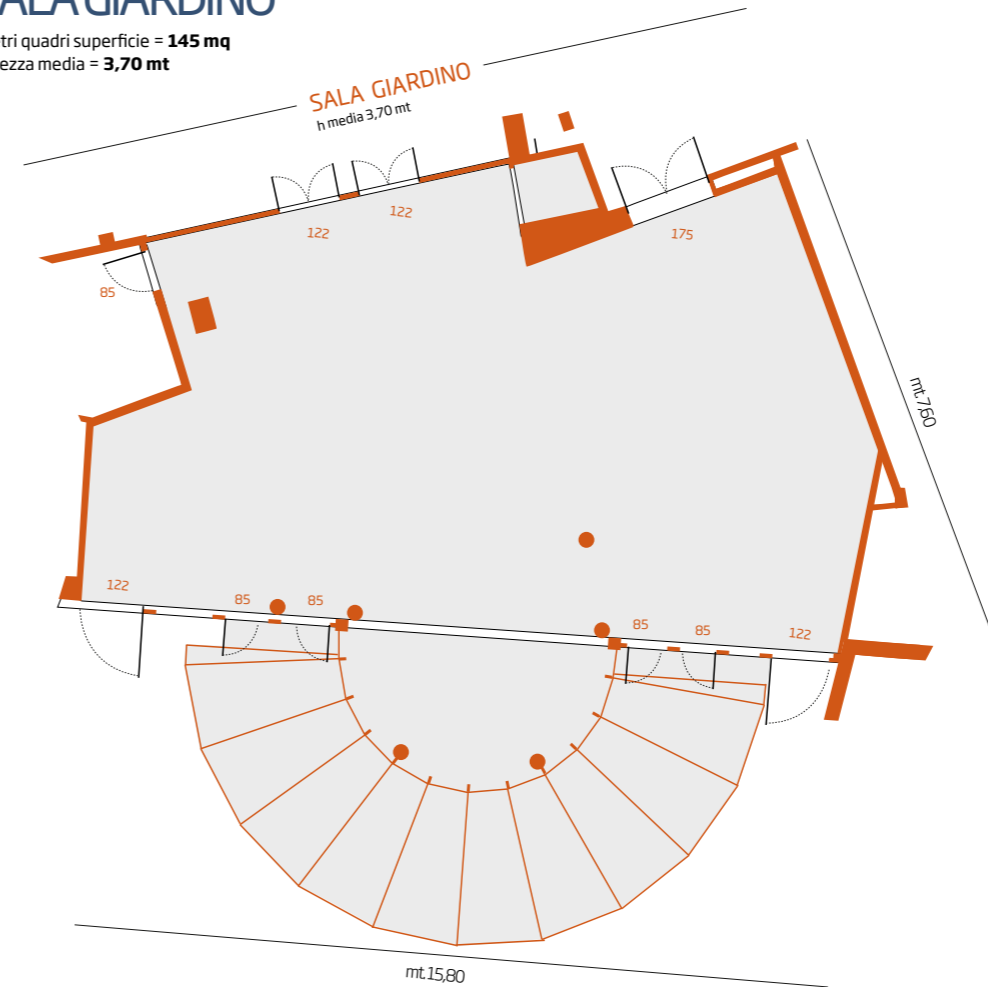
Kalidria Hotel



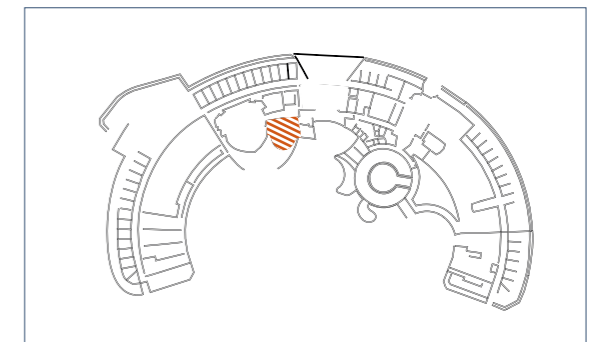
Sala Ambasz | piano terra

SALA GIARDINO

Metri quadri superficie = **145 mq**
Altezza media = **3,70 mt**



Kalidria Hotel



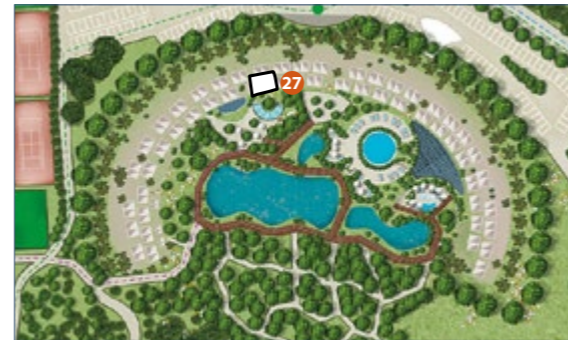
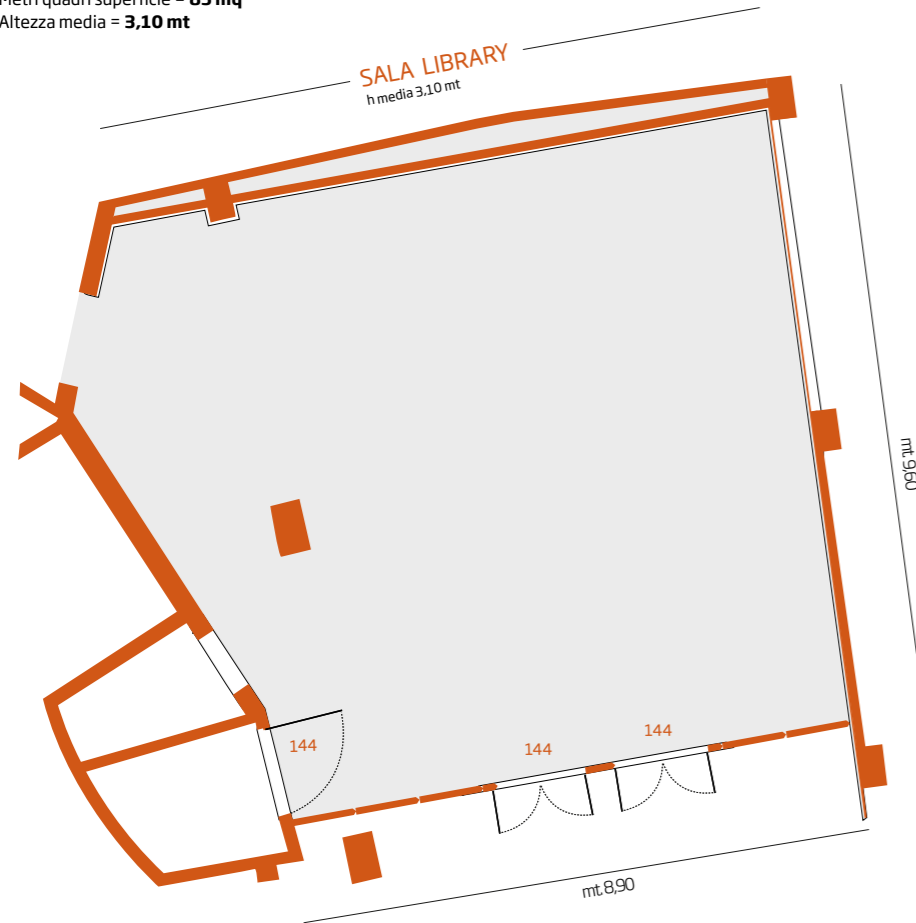
Sala Giardino | piano terra

Platea = **130**
Classroom = **60**
Cabaret = **60**
Ferro di Cavallo = **50**

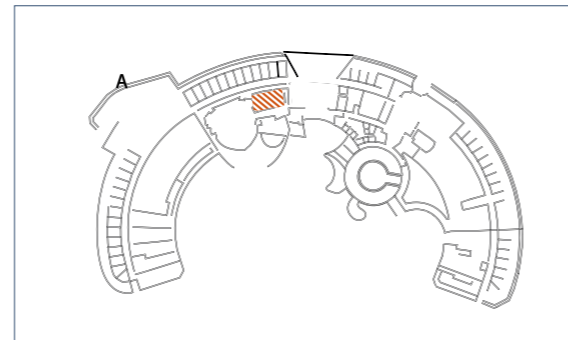
Platea = **70**
Classroom = **30**
Cabaret = **35**
Ferro di Cavallo = **30**

SALA LIBRARY

Metri quadri superficie = **85 mq**
Altezza media = **3,10 mt**



Kalidria Hotel

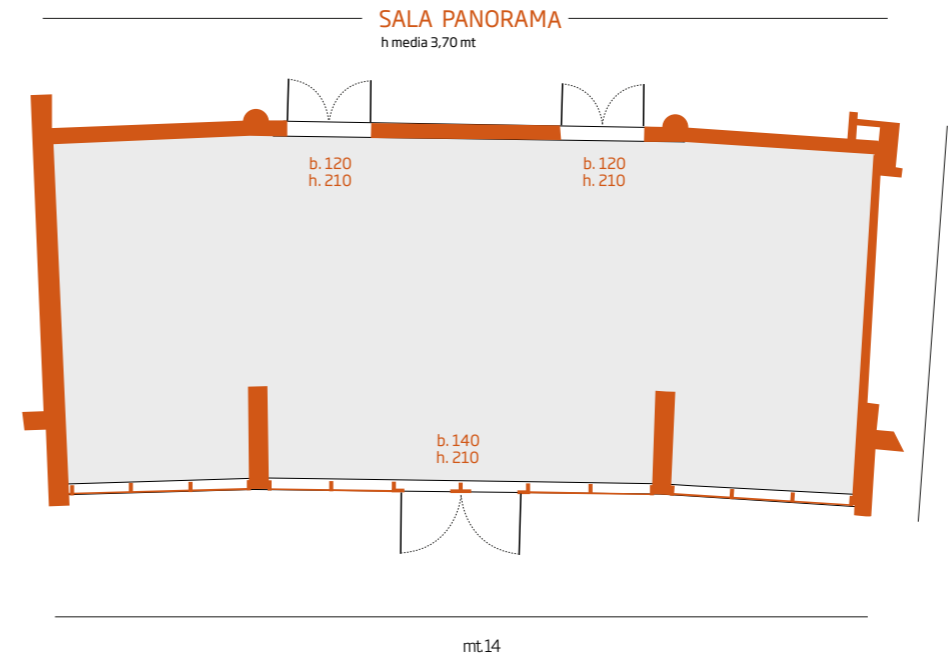


Sala Library | piano terra

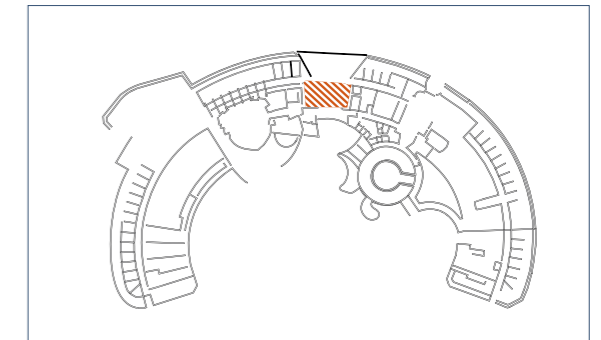
Platea = **60**
Classroom = **30**
Cabaret = **30**
Ferro di Cavallo = **22**

SALA PANORAMA

Metri quadri superficie = **84 mq**
Altezza media = **3,70 mt**



Kalidria Hotel



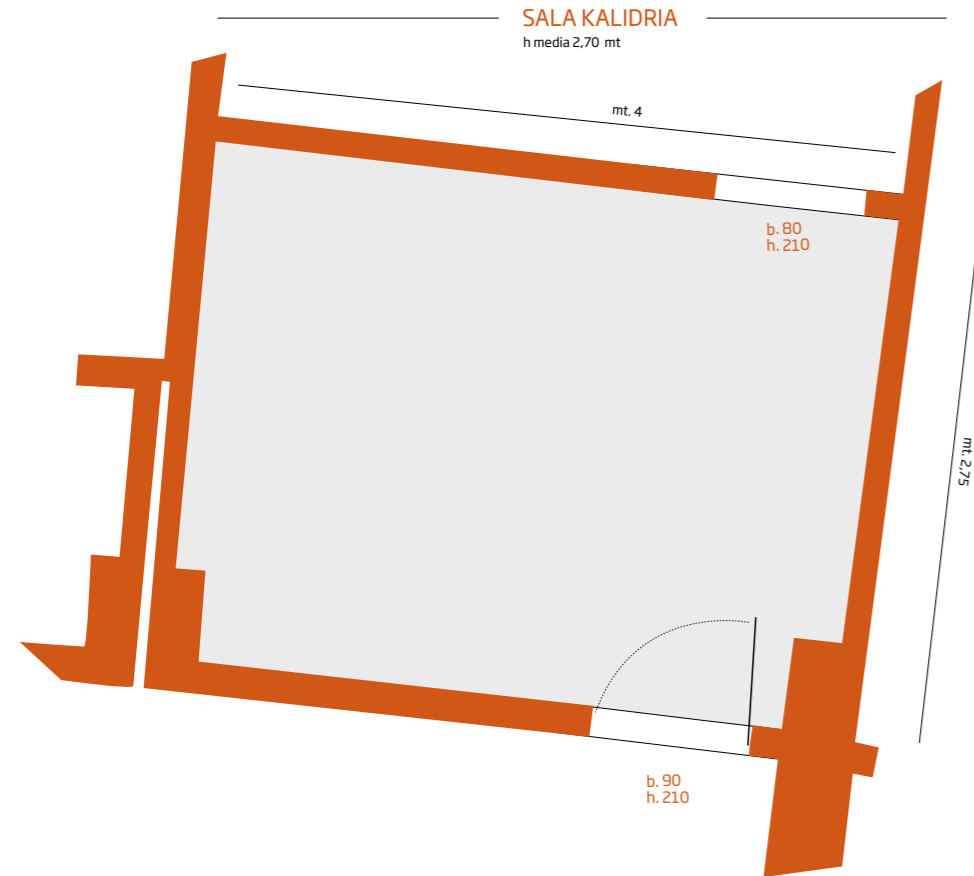
Sala Panorama | 1° piano

Platea = **45**
Classroom = **20**
Ferro di Cavallo = **24**
Tavola Rotonda = **24**

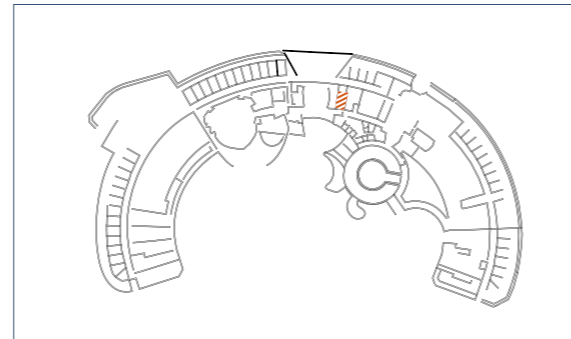
SALA KALIDRIA

Metri quadri superficie = **11 mq**
Altezza media = **2,70 mt**

Tavola rotonda = **6**



Kalidria Hotel

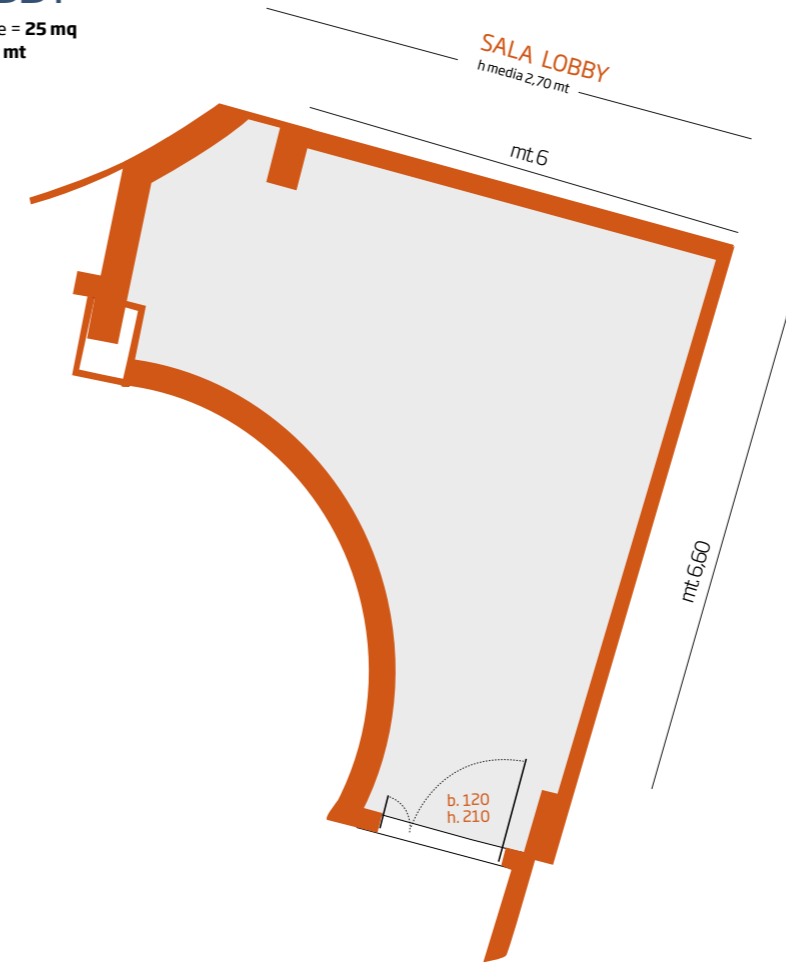


Sala Kalidria | piano terra

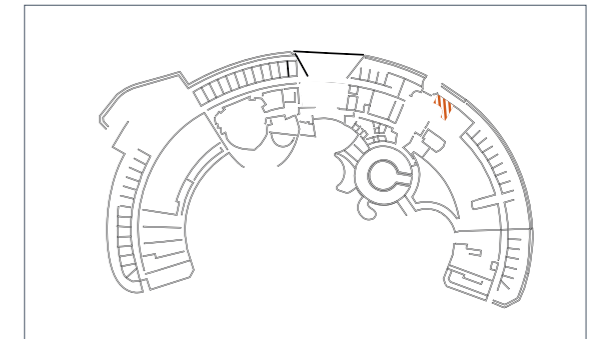
SALA LOBBY

Metri quadri superficie = **25 mq**
Altezza media = **2,70 mt**

Platea = **10**
Classroom = **4**



Kalidria Hotel



Sala Lobby | piano terra



COME RAGGIUNGERE ETHRA CONGRESS CENTER

In aereo: gli aeroporti di Bari e Brindisi distano circa 100 km (autostrada o strada a scorrimento veloce).

In auto: da Bari autostrada A14 fino alla barriera di Taranto. Da Taranto si prosegue in direzione Reggio Calabria sulla superstrada S.S. 106 fino all'uscita di Castellana Marina.

In treno: la stazione ferroviaria di Taranto dista circa 40 km dall'Hotel, la stazione di Metaponto è a 20 km. Stazione di Castellana Marina a 5 minuti.

HOW TO GET TO THE ETHRA CONGRESS CENTER

By plane: the airports of Bari and Brindisi are about 100 km away (motorway or fast roads).

By car: from Bari take the A14 motorway to the Taranto tollgate. From Taranto continue in the direction of Reggio Calabria on the S.S. 106 dual carriageway until the Castellana Marina turn-off.

By train: Taranto railway station is about 40 km from the Hotel. Metaponto station is 20 km away and Castellana Marina station is 5 minutes away.

ETHRA CONGRESS CENTER

S.S. 106 km 466.600 - Castellaneta Marina (Taranto) - Italy
Tel. +39.085.8369700 - mice@bluserena.it - www.bluserena.it