

# Charts for

# “3-D EFFECTS WITH ENERGIZED SINGLES”

In the *Spin Off* Spring 2018 issue, Amy Tyler experimented with stitch patterns to determine which qualities gave the best three-dimensional effects when knitted using energized singles yarn. She says, “Not all knit-purl stitch patterns produce an interesting effect. If the number of stitches in the knit section (stockinette) and the purl section (reverse stockinette) is not great enough, the knitted fabric does not produce the lovely hills and valleys.” For comparison, Amy knitted two samples of several stitch patterns. She knitted the swatch on the left in the photos below with a balanced 2-ply yarn and the one on the right with an energized Z-spun singles yarn. Here are the charts to knit the three-dimensional stitch patterns shown on pages 69 and 71 in the magazine.

□ k on RS; p on WS

• p on RS; k on WS

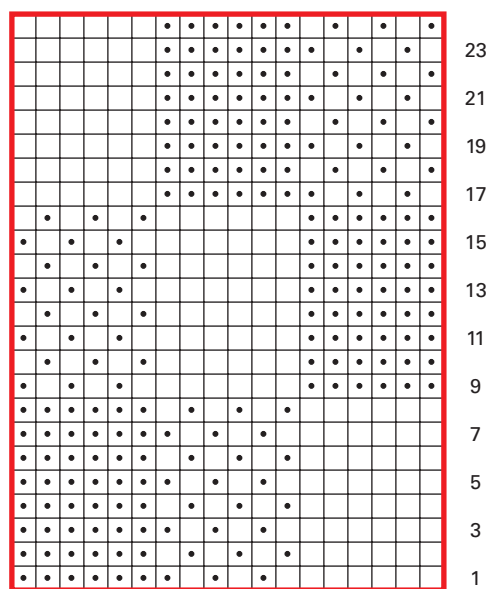
▭ pattern repeat

## CHECKERBOARD

Swatch: 36 sts, 48 rows.



Checkerboard



18-st rep

Spin Off

SPRING 2018

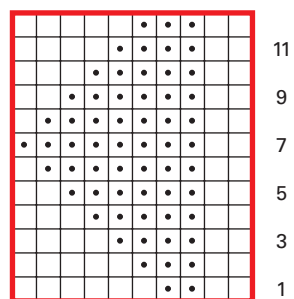
© F+W MEDIA, INC. ALL RIGHTS RESERVED. F+W MEDIA GRANTS PERMISSION FOR THIS CHART TO BE COPIED FOR PERSONAL USE. | INTERWEAVE.COM

## PENNANT PLEATING

Swatch: 40 sts, 49 rows.



Pennant Pleating



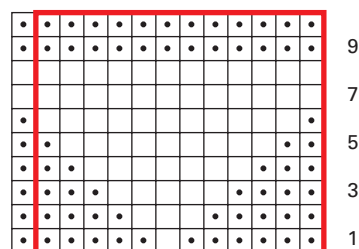
10-st rep

## WELT WAVES

Swatch: 37 sts, 67 rows.



Welt Waves



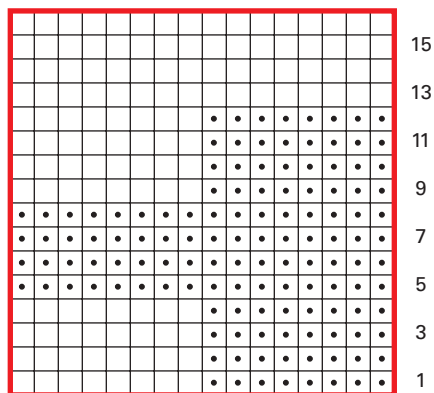
12-st rep

## CINDER BLOCKS

Swatch: 32 sts, 44 rows.



Cinder Blocks



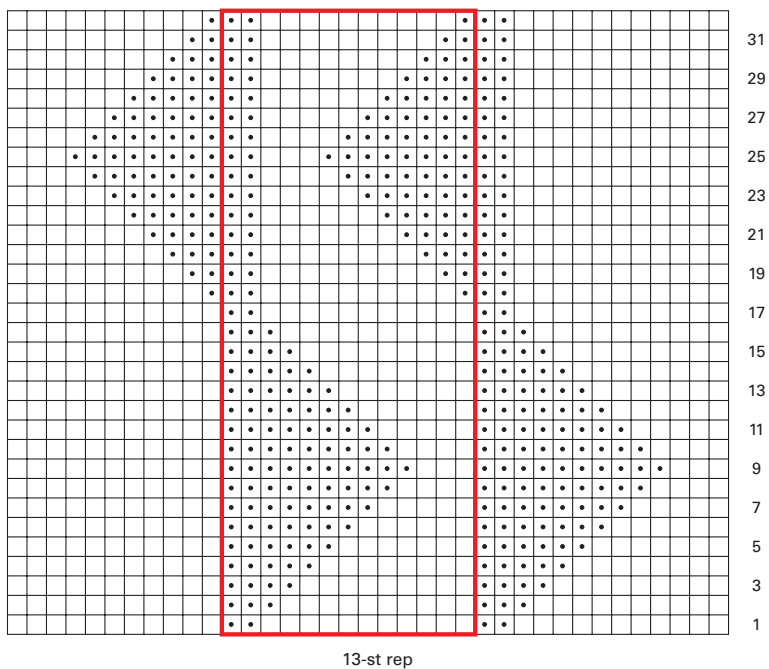
16-st rep

## TWO-WAY PENNANTS

Swatch: 50 sts, 49 rows.



Two-Way Pennants



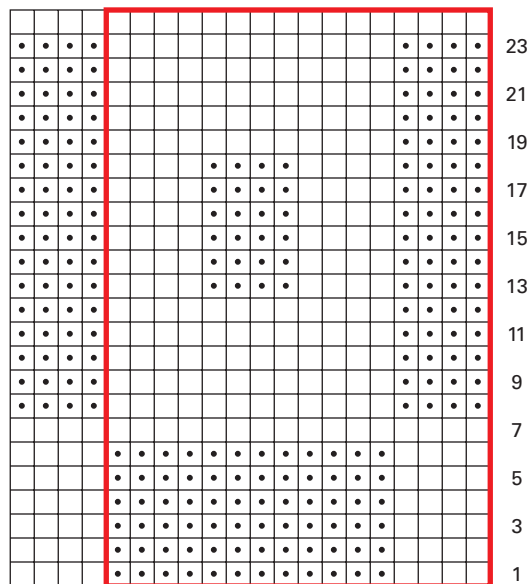
13-st rep

## BOX IN BOX

Swatch: 36 sts, 54 rows.



Box in Box



16-st rep