


The Ushki Wool Hat to Knit

INNA VOLTCHKOVA

Key

 k on RS; p on WS

 p on RS; k on WS


 sl 1 wyf


 yo

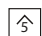
 k1tbl on RS, p1tbl on WS

 p1tbl on RS, k1tbl on WS

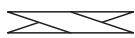
 k2tog

 p2tog

 k1, yo, k1, yo, k1 in same st

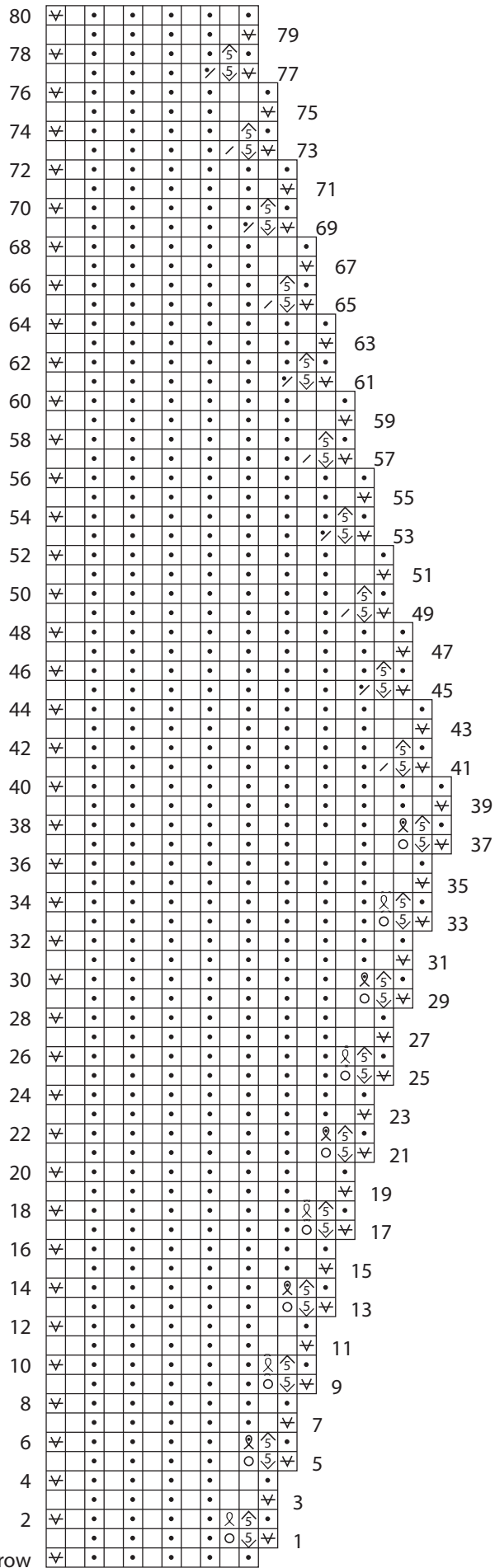
 p5tog

 pattern repeat

 sl 3 sts onto cn, hold in front, k3, k3 from cn

Charts may be photocopied for personal use.

Border



Set up row

Hat

