





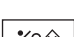
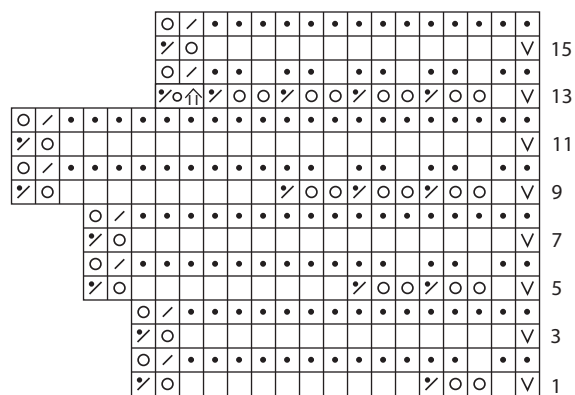


Shell Lace *to* Knit

Key

-  k on RS; p on WS
-  p on RS; k on WS
-  sl 1 pwise wyb
-  yo
-  k2tog on RS; p2tog on WS
-  p2tog on RS; k2tog on WS
-  pass sts 2–11, one at a time, over the 1st st on left needle, yo, p2tog—10 sts dec'd

Shell Stitch



16- to 22-st rep

Chart may be photocopied for personal use.