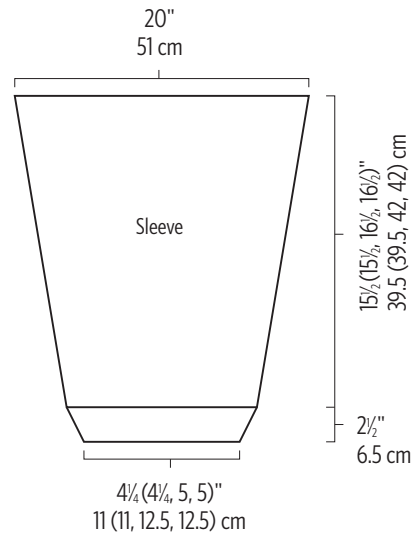
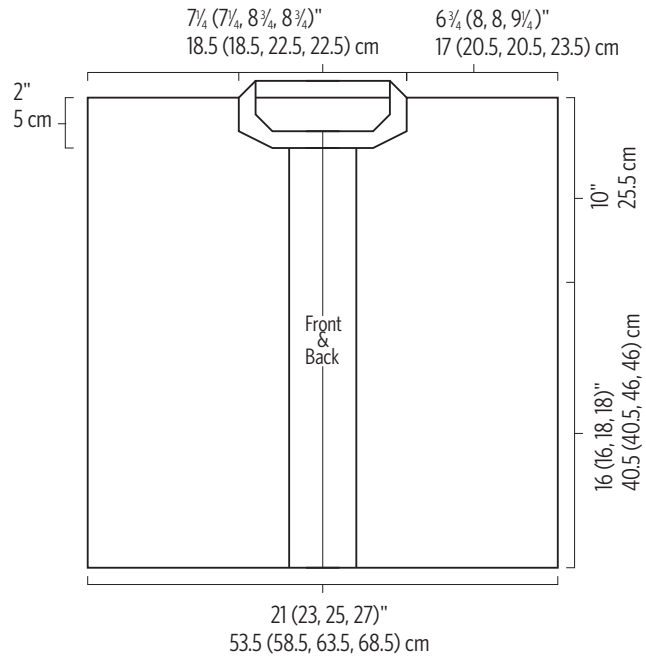


Celtic Cardigan

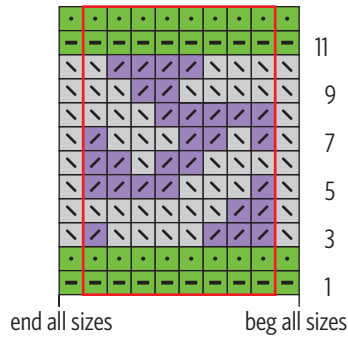
MELISSA JOHNSON



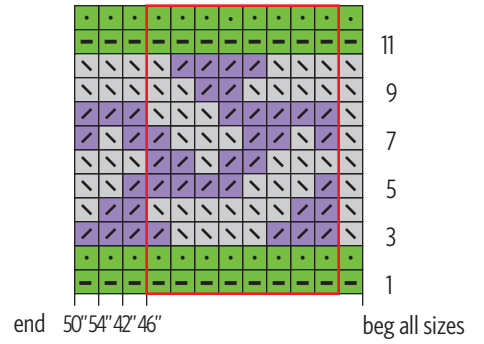
Key

- purl on RS with appropriate color;
knit on WS with appropriate color
- / B - Elderberry
- C - Moss
- \ D - Grey Birch
- pattern repeat

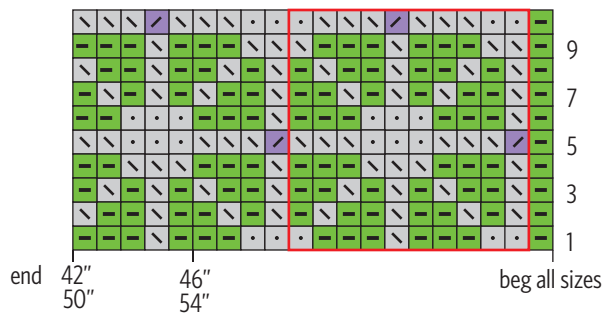
Braid I



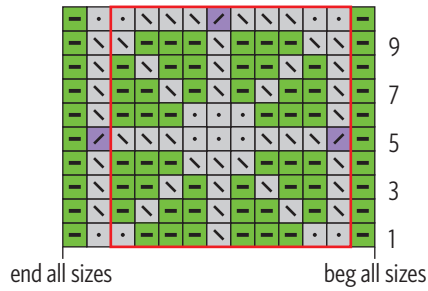
Braid II- Right Front



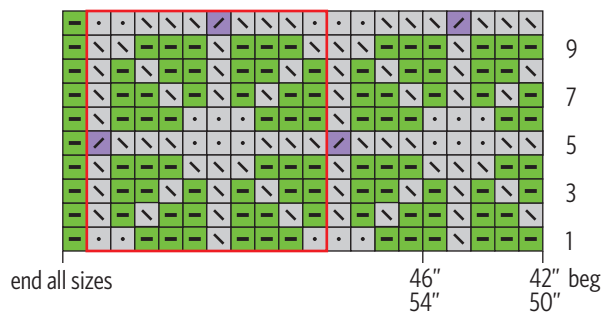
Crosses I-Right Front



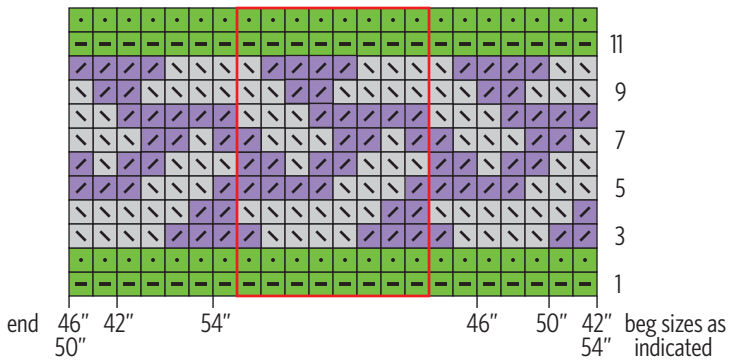
Crosses II-Back



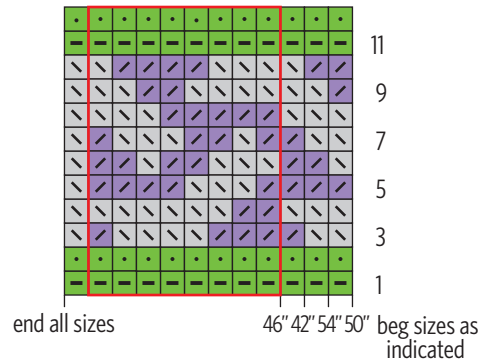
Crosses III-Left Front



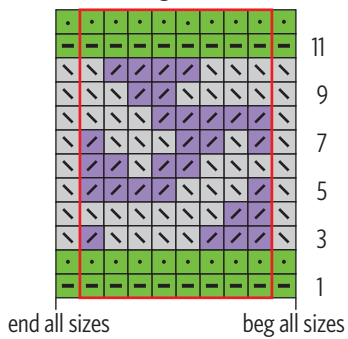
Braid III-Back



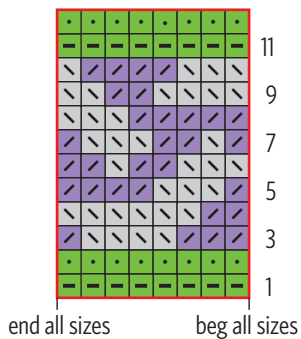
Braid IV-Left Front



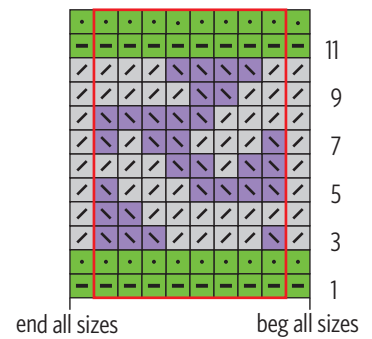
Braid V-Right Cuff



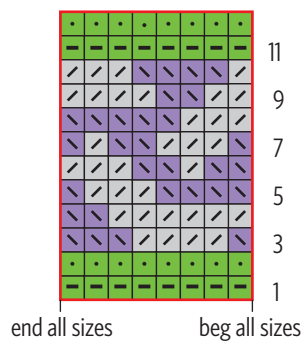
Braid VI-Right Sleeve Top



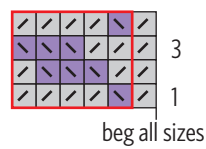
Braid VII-Left Cuff



Braid VIII-Left Sleeve Top



Band I



Band II

