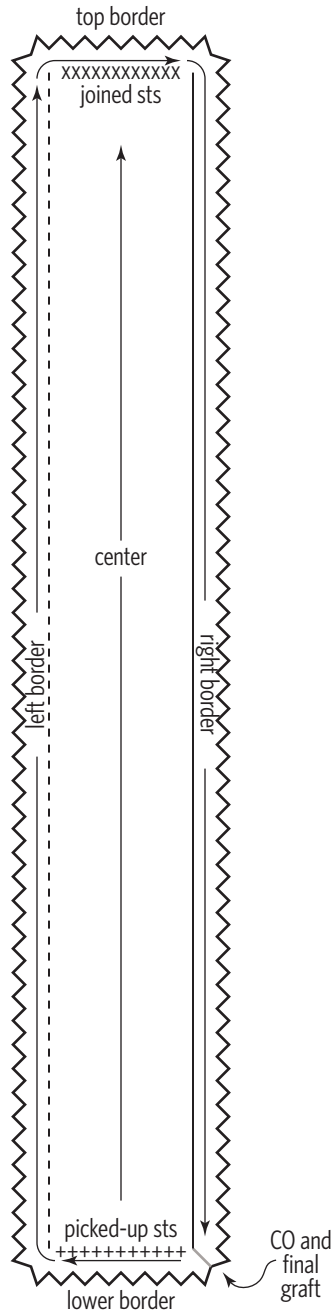


Rata Scarf

MARGARET STOVE

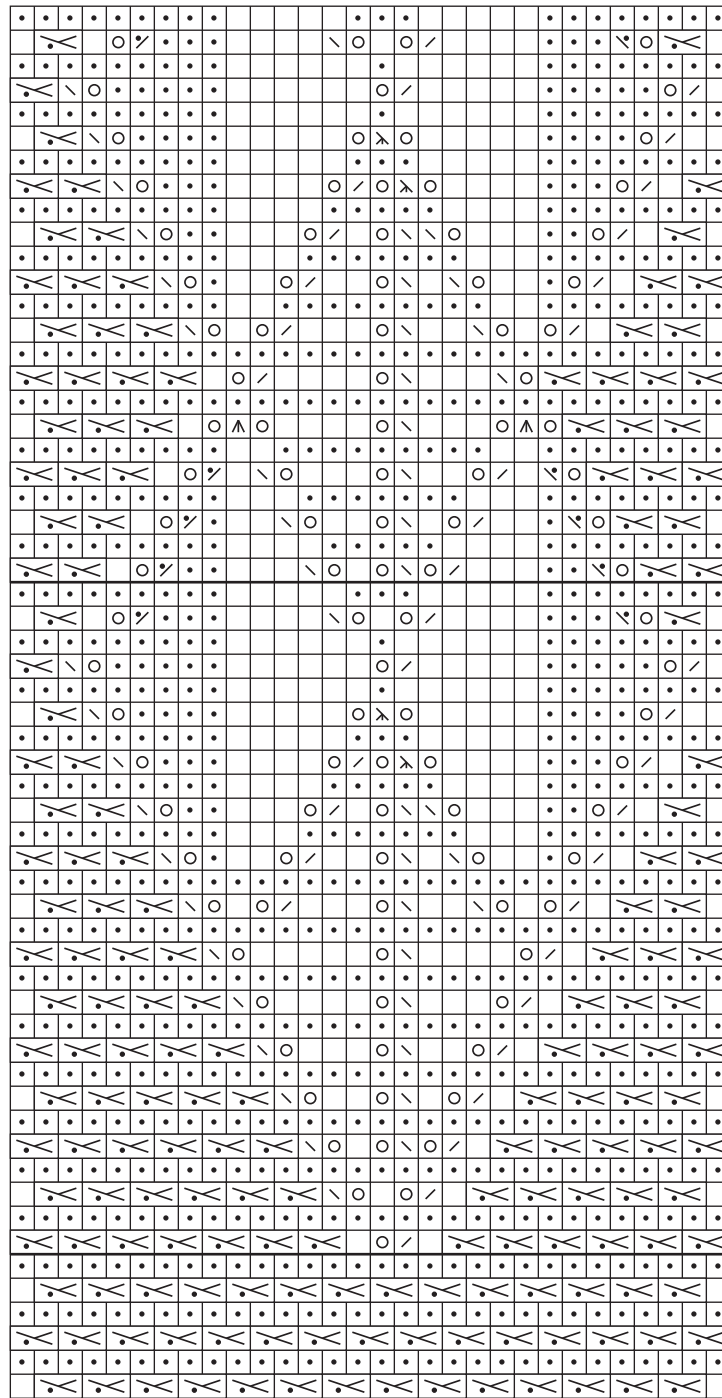


Arrows show direction of knitting.

Key

- k on RS rows; p on WS rows
- p on RS rows; k on WS rows
- k1tbl on WS
- yo
- k2tog on RS rows; p2tog on WS rows
- p2tog on RS rows; k2tog on WS rows
- ssk on RS rows; ssp on WS rows
- ssp on RS rows; ssk on WS rows
- sl 1, k2tog, psso
- sl 2, k1, p2sso
- k1f&b
- k1 wrapping yarn 3 times
- k9 elongated sts tog
- CO sts at end of row
- no stitch
- pattern repeat
- p2tog, k2tog in same 2 sts

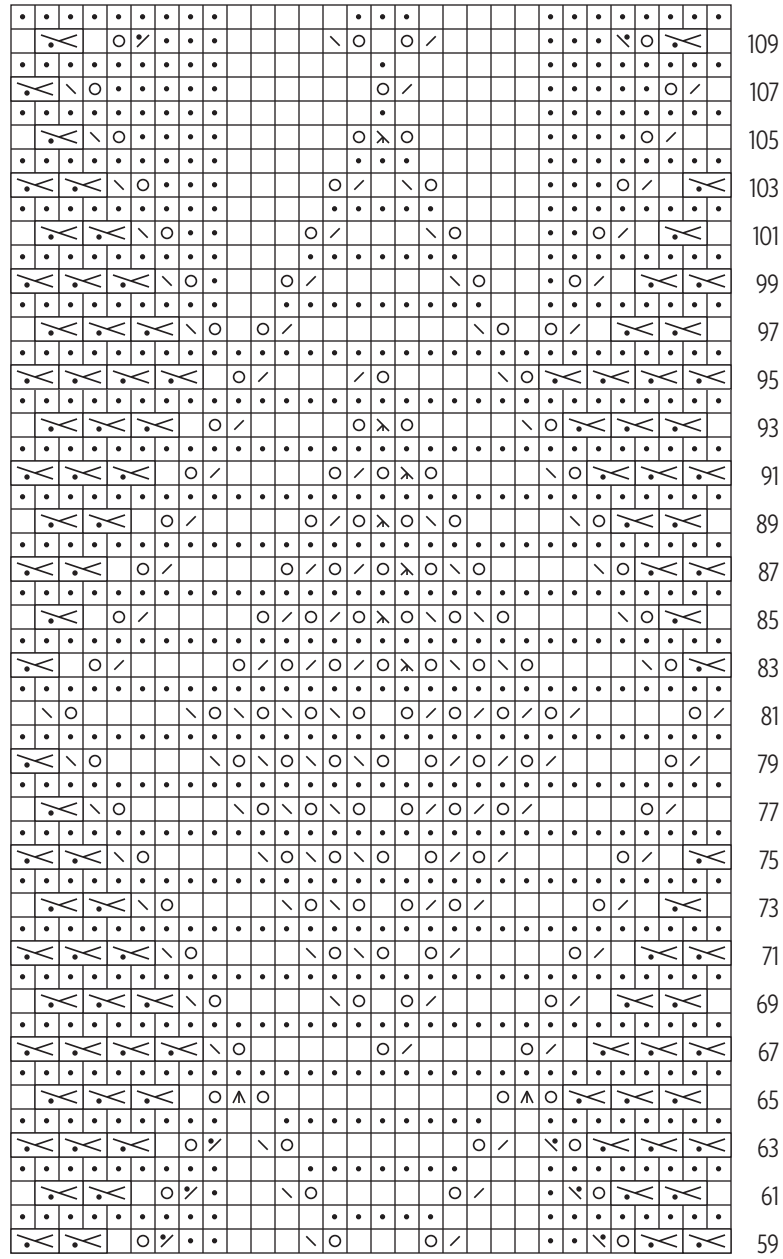
Center Rows 1-58



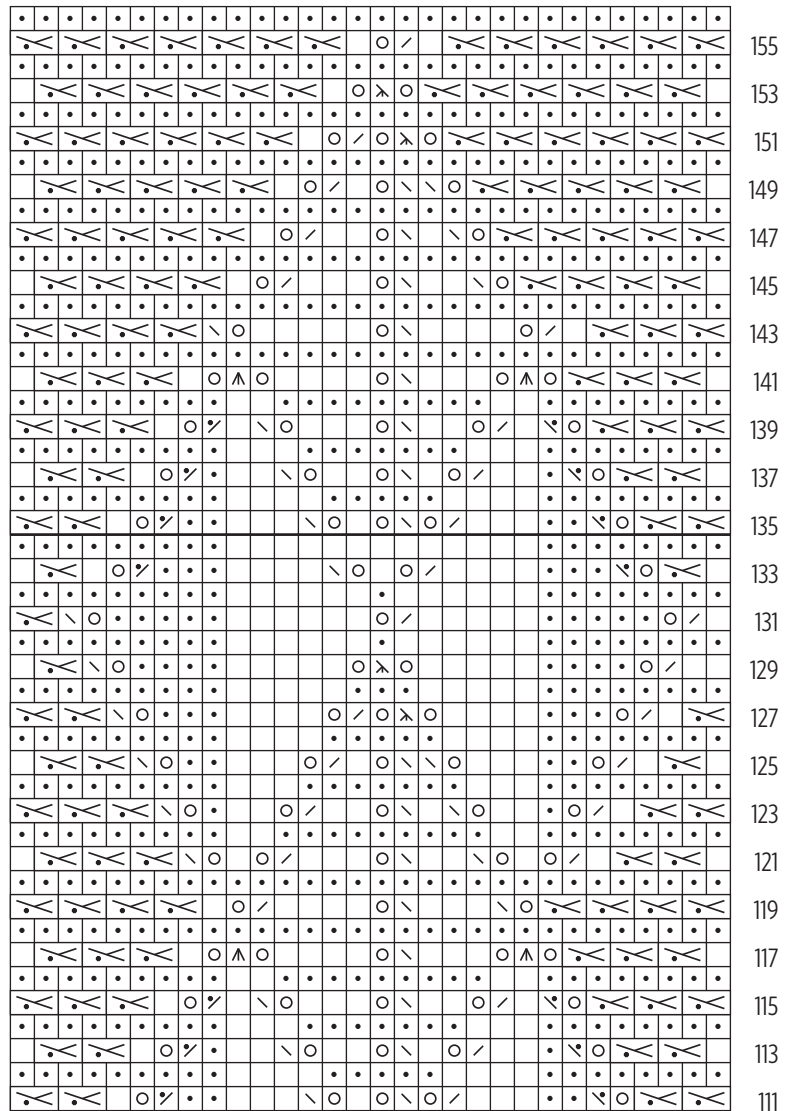
work
2 times

work
according to
instructions

Center Rows 59-110

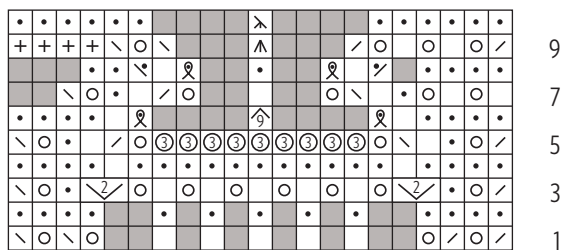


Center Rows 111-156



work
2 times

Edging



Fern

