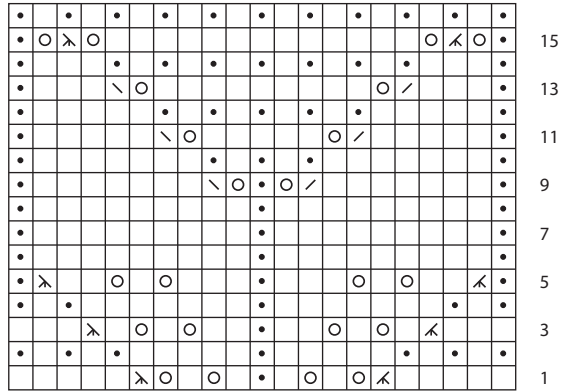


Lace-Leaf Pocket Cardigan

QUENNA LEE

Double Leaf

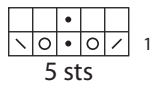


21 sts

Key

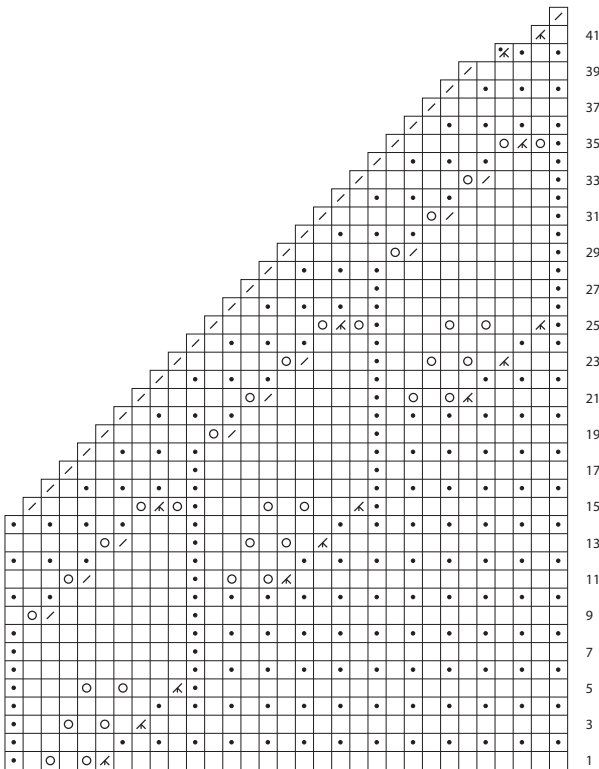
- k on RS; p on WS
- p on RS; k on WS
- yo
- k2tog on RS; p2tog on WS
- ssk on RS; ssp on WS
- k3tog on RS
- sl 1, k2tog, pssso on RS
- p3tog on WS
- sssp on WS

Double Eyelet



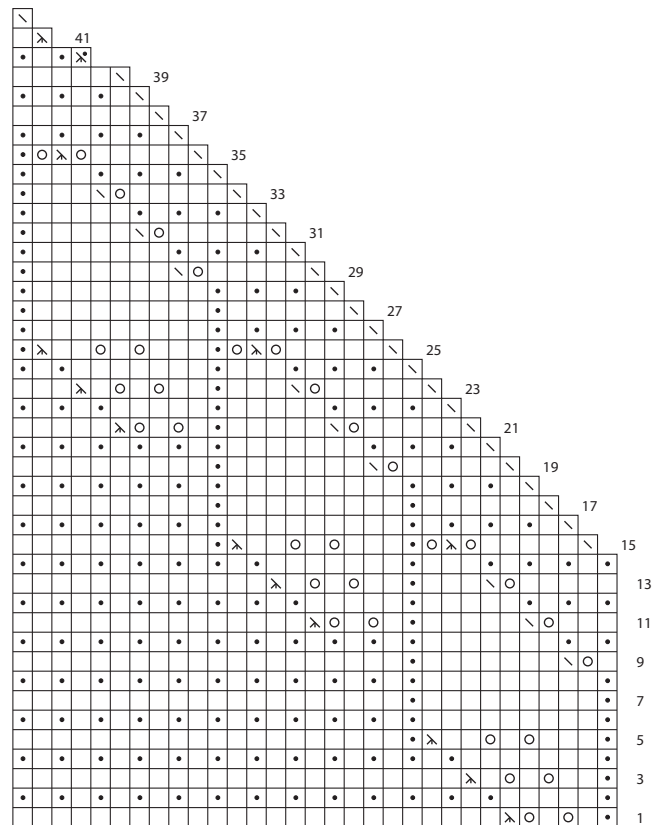
5 sts

Right Lace Leaf Pocket



31 sts dec'd to 1 st

Left Lace Leaf Pocket



31 sts dec'd to 1 st

