

A Riot of Color

Vintage Socks to Crochet

SARAH READ

Key

- Red (A)
- Cream (B)
- Navy (C)
- Light Blue (D)
- Green (E)
- Orange (F)
- Inc by working in same st as prev sc

Chart 1. Inverted Pyramid

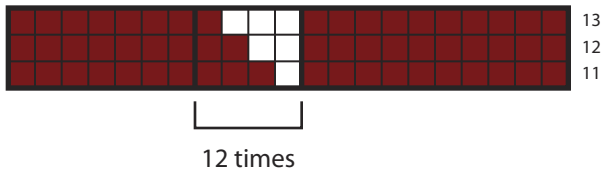


Chart 2. Crosses

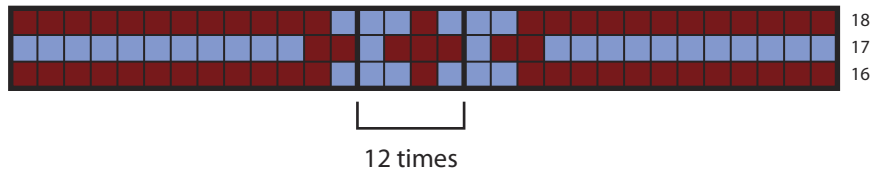


Chart 3. Keyhole

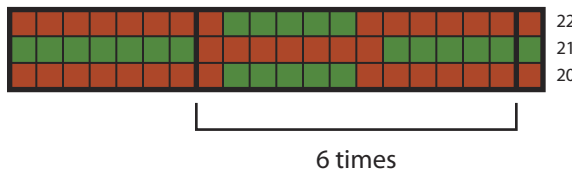


Chart 4. Pyramid

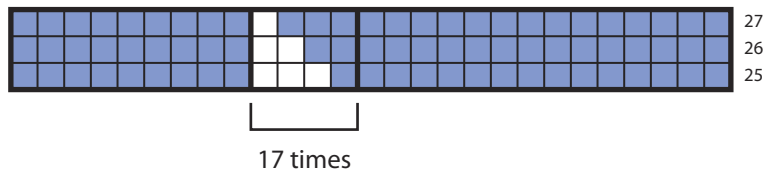
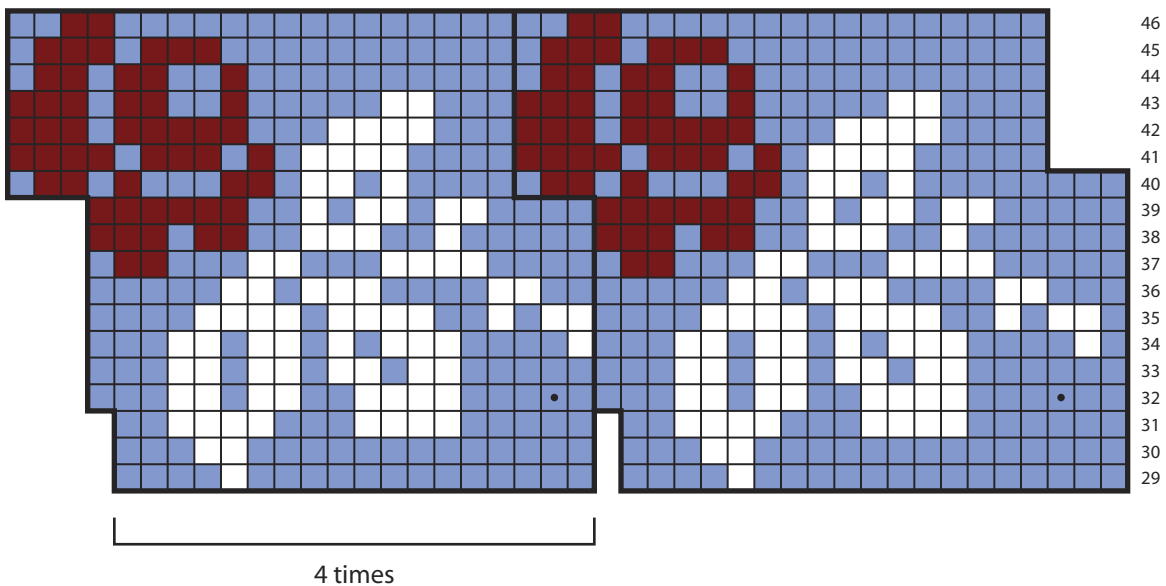


Chart 5. Large Roses



Note: Beg of rnd will shift 3 sts to the left after Rnd 40.

Chart 6. Inverted Pyramid

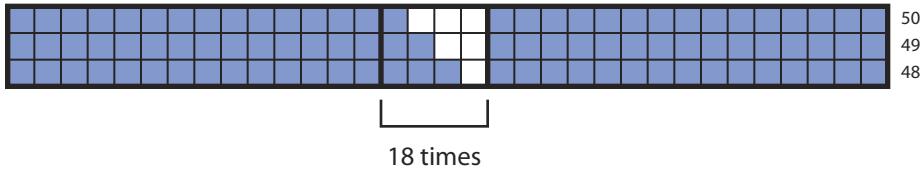


Chart 7. Keyhole

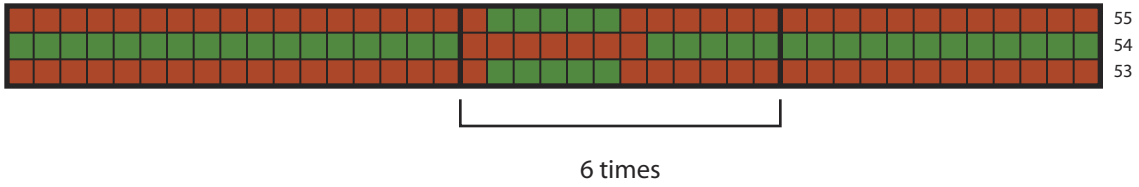


Chart 8. Pyramid

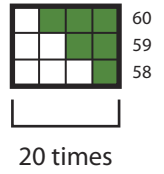


Chart 9. Tree of Life

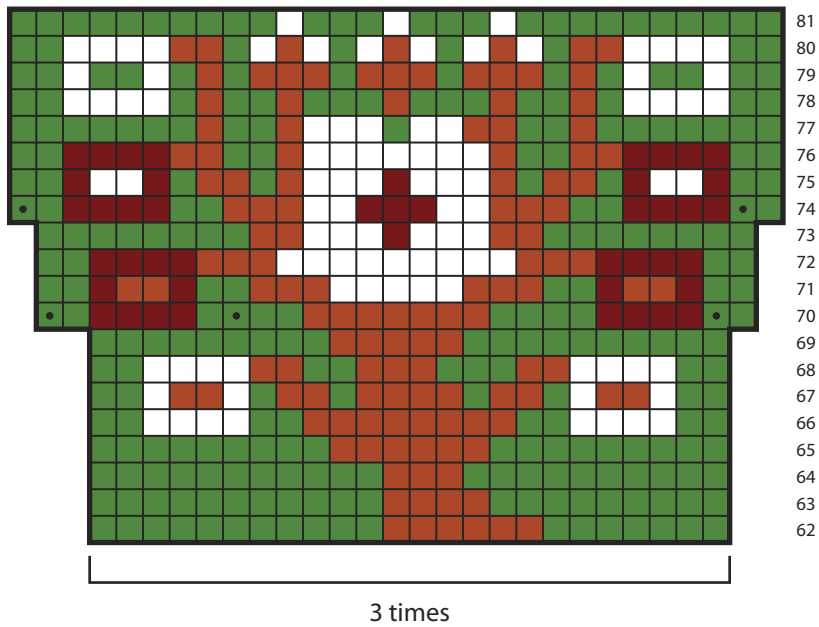


Chart 10. Inverted Pyramid

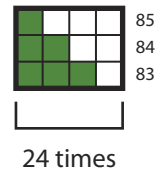


Chart 11. Small Roses

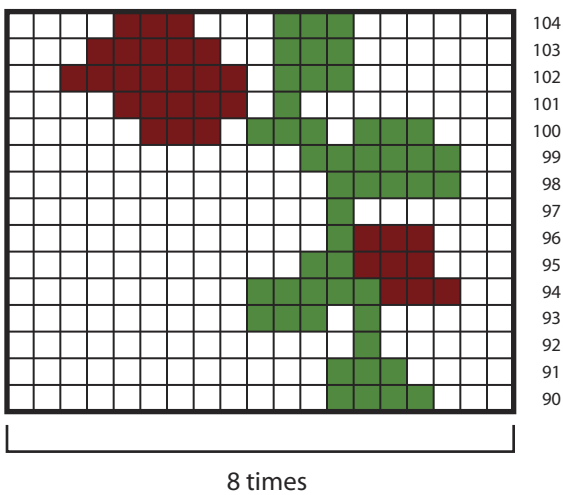


Chart 12. Keyhole

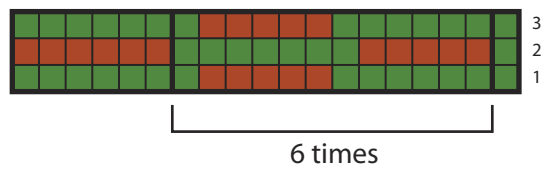


Chart 13. Crosses

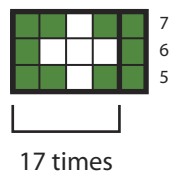


Chart 14. Keyhole

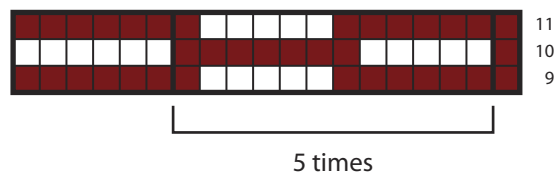


Chart 15. Pyramid

