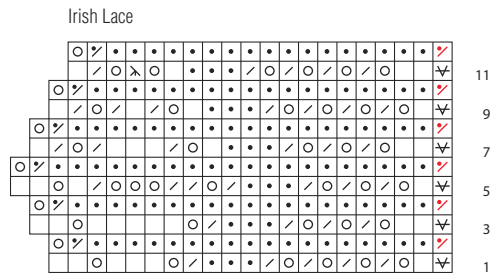


Weldon's Irish Lace Shawl to Knit

CAROLYN WYBORN Y



Key

- k on RS; P on WS
- p on RS; k on WS
- yo
- / k2tog on RS
- ∕ k2tog on WS
- ↘ k2tog last edging st with 1 shawl st
- λ sl 1, k2tog, pssso
- ∕ sl 1 purlwise wyf