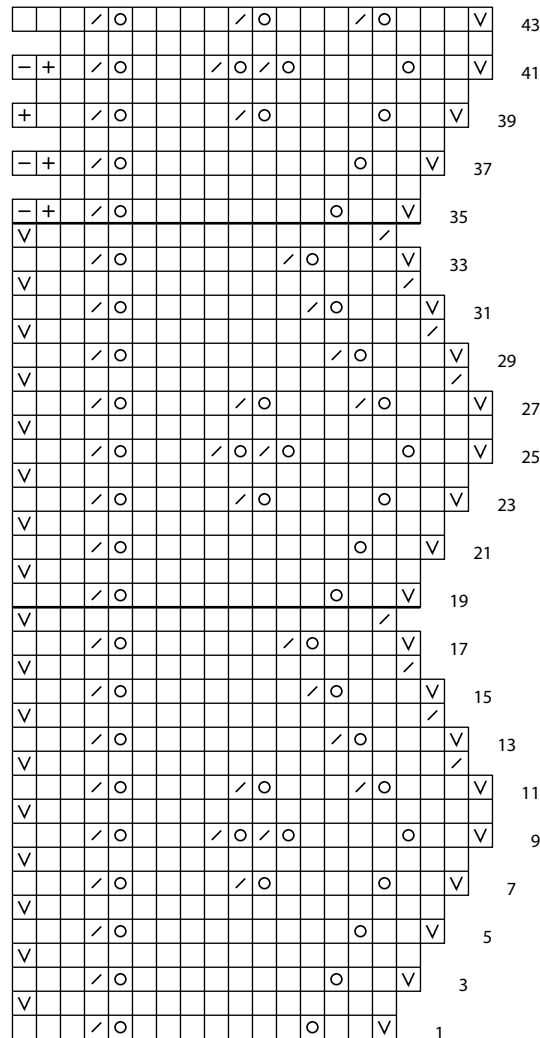


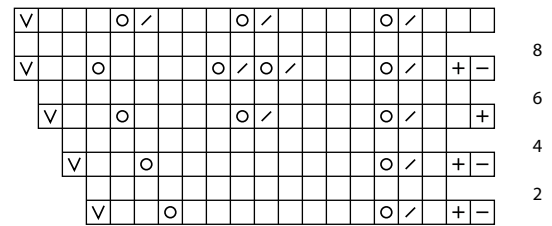
Wandering Paths Stole to Knit

KATRINA KING

Bottom Edge and Bottom-Right Corner



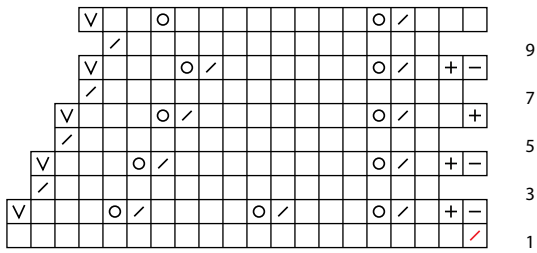
Bottom-Left Corner



Key

- knit on RS and WS
- yo
- / k2tog on RS and WS
- / k2tog edge or corner st tog with body st
- ↖ k3tog
- v sl 1 pwise wyf on RS and WS
- + knit, then sl st back to left needle
- unworked st; do not knit
- | marker positions
- pattern repeat

Top-Left Corner



Key

- knit on RS and WS
- o yo
- / k2tog on RS and WS
- / k2tog edge or corner st tog with body st
- ↖ k3tog
- v sl 1 pwise wyf on RS and WS
- + knit, then sl st back to left needle
- unworked st; do not knit
- marker positions
- pattern repeat

Top-Right Corner and Top Edge

