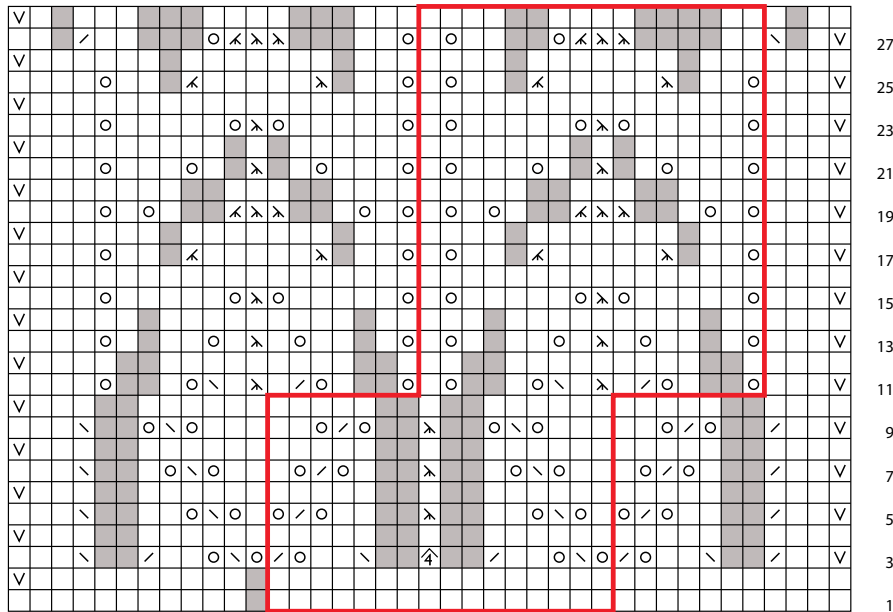


A Shawl Based on a *Weldon's Veil* Pattern to Knit

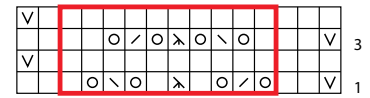
CAROLYN WYBORN Y

Border



16-st rep decreased to 10-st rep

Transition

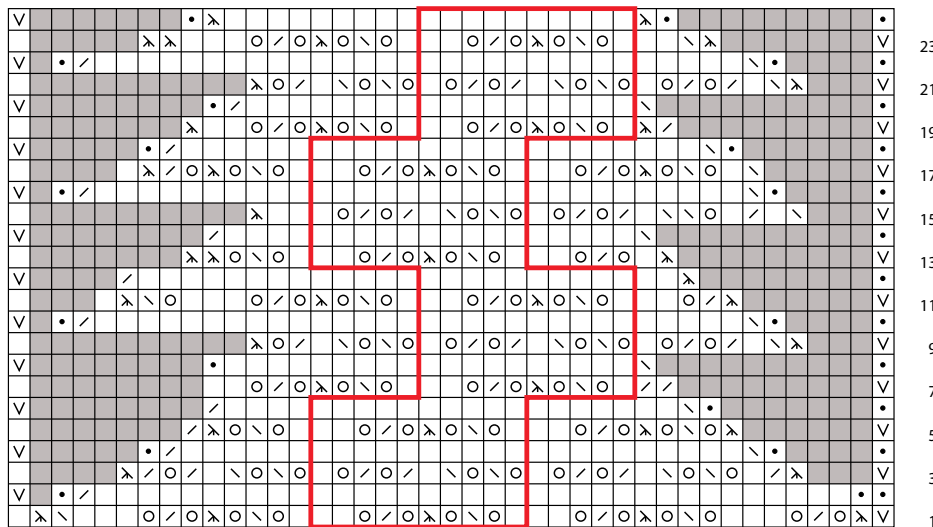


10-st rep

Key

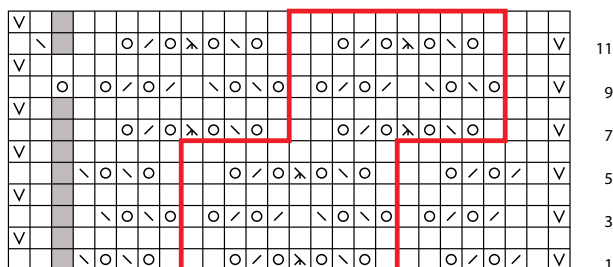
- k on RS; p on WS
- p on RS; k on WS
- o yo
- / k2tog on RS; p2tog on WS
- \ ssk on RS; ssp on WS
- < k3tog
- > sl 1 kwise, k2tog, pssso on RS; p3tog tbl on WS
- ^ sl 1 kwise, k3tog, pssso
- v sl 1 pwise (see Notes)
- no stitch
- pattern repeat

Body Decrease



10-st rep

Body



10-st rep