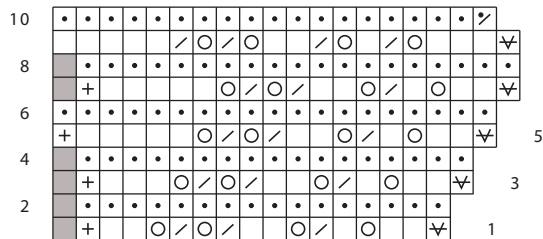


# Santa Fe Turquoise Trail Scarf to Knit

MARA BISHOP STATNEKOV

First Corner chart

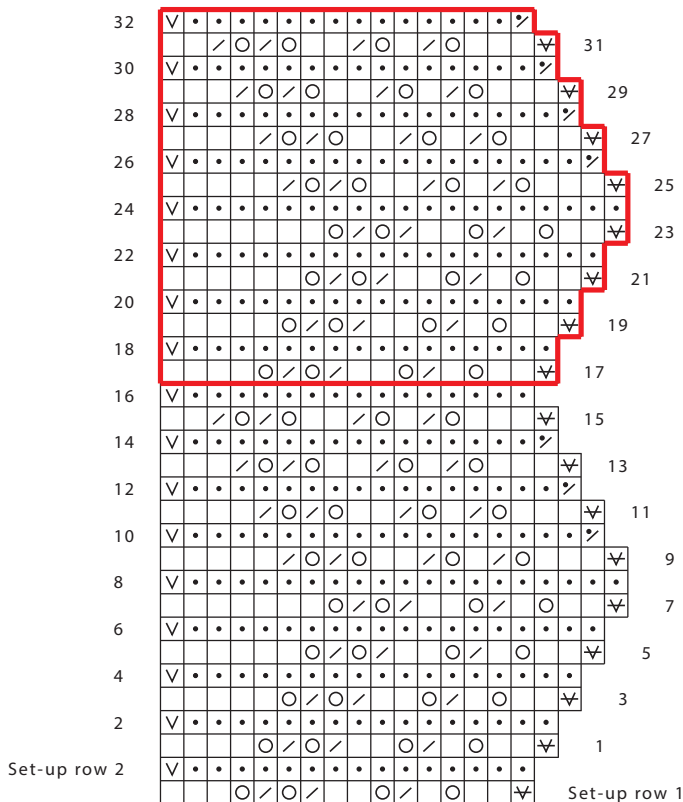


*Note:* on Rows 1, 3, and 7, work to second to last st. Place last st worked back on left needle, and turn. Knit even-numbered rows to outer edge, remembering on Row 10 to knit the last 2 sts tog.

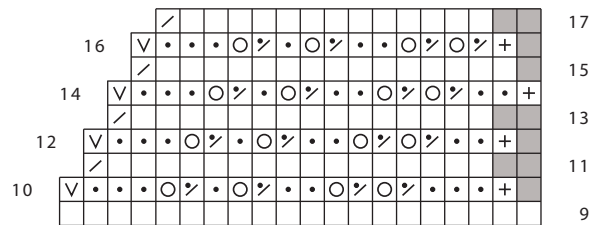
Key

- k on RS, p on WS
- p on RS, k on WS
- yo
- / k2tog on RS
- \ k2tog on WS
- ⋈ k3tog
- ▽ sl 1 wyf on RS
- ∇ sl 1 wyf on WS
- + k last st tog with next top st and return st to left needle
- no stitch; this st is not worked on this row
- patt rep

Edging chart



Fourth Corner chart



*Note:* on Rows 10, 12, and 16, work to second to last st. Place last st worked back on left needle, and turn. Knit even-numbered rows back to edge, remembering to knit the last 2 sts tog.