

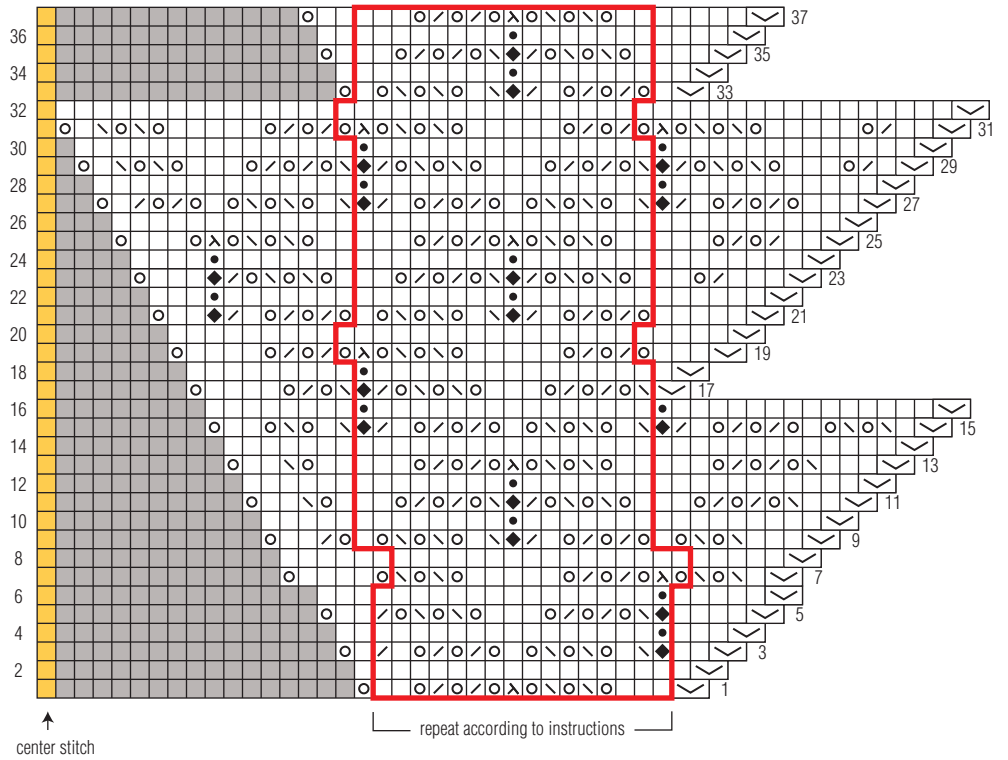
# Leaves and More Leaves Beaded Shawl

CAROLYN WYBORN Y

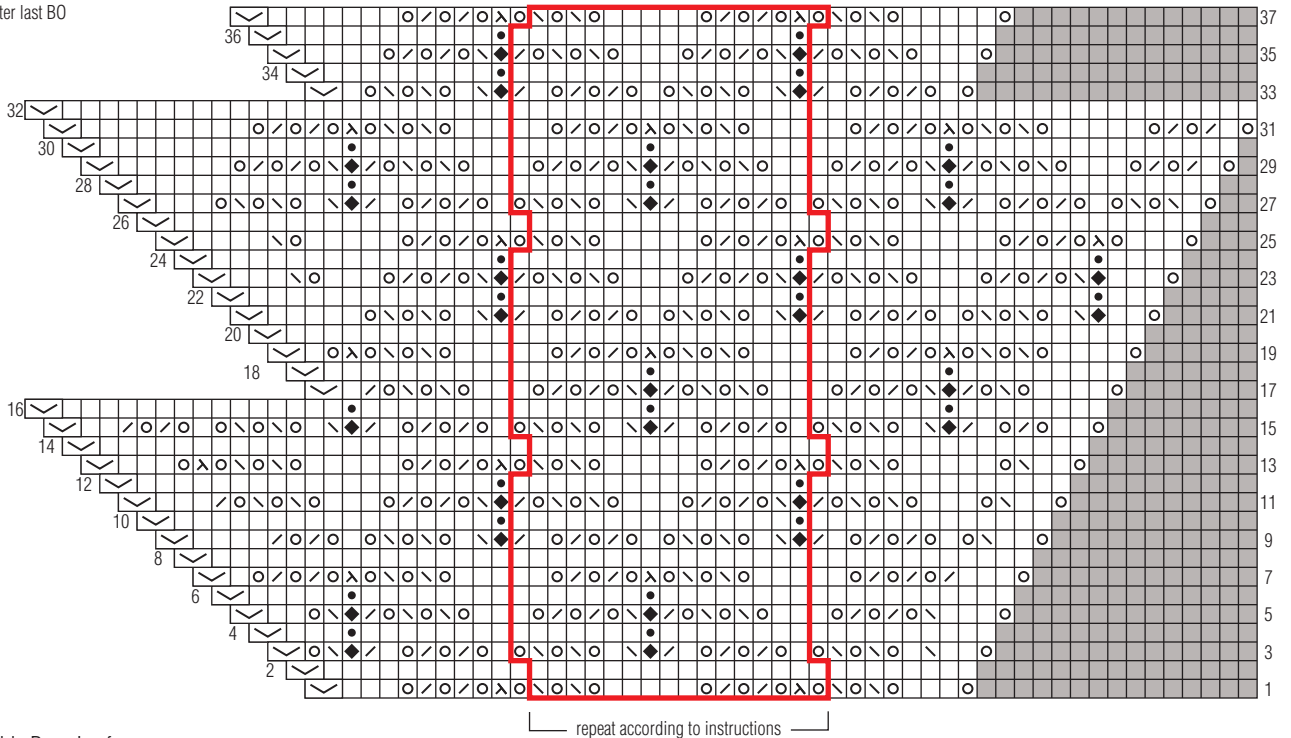
## Key

- k on RS; p on WS
- p on RS; k on WS
- k2tog
- ssk
- p2tog on RS; k2tog on WS
- p2tog 1 edging st and 1 border st
- sl 1 knitwise, k2tog, pssso
- k3tog
- yo
- place bead
- sl 1 purlwise wyb
- center st
- no stitch
- BO 1 st
- st on needle after last BO
- k1f&b
- repeat

Right Leaf



Left Leaf



Double Rose Leaf

