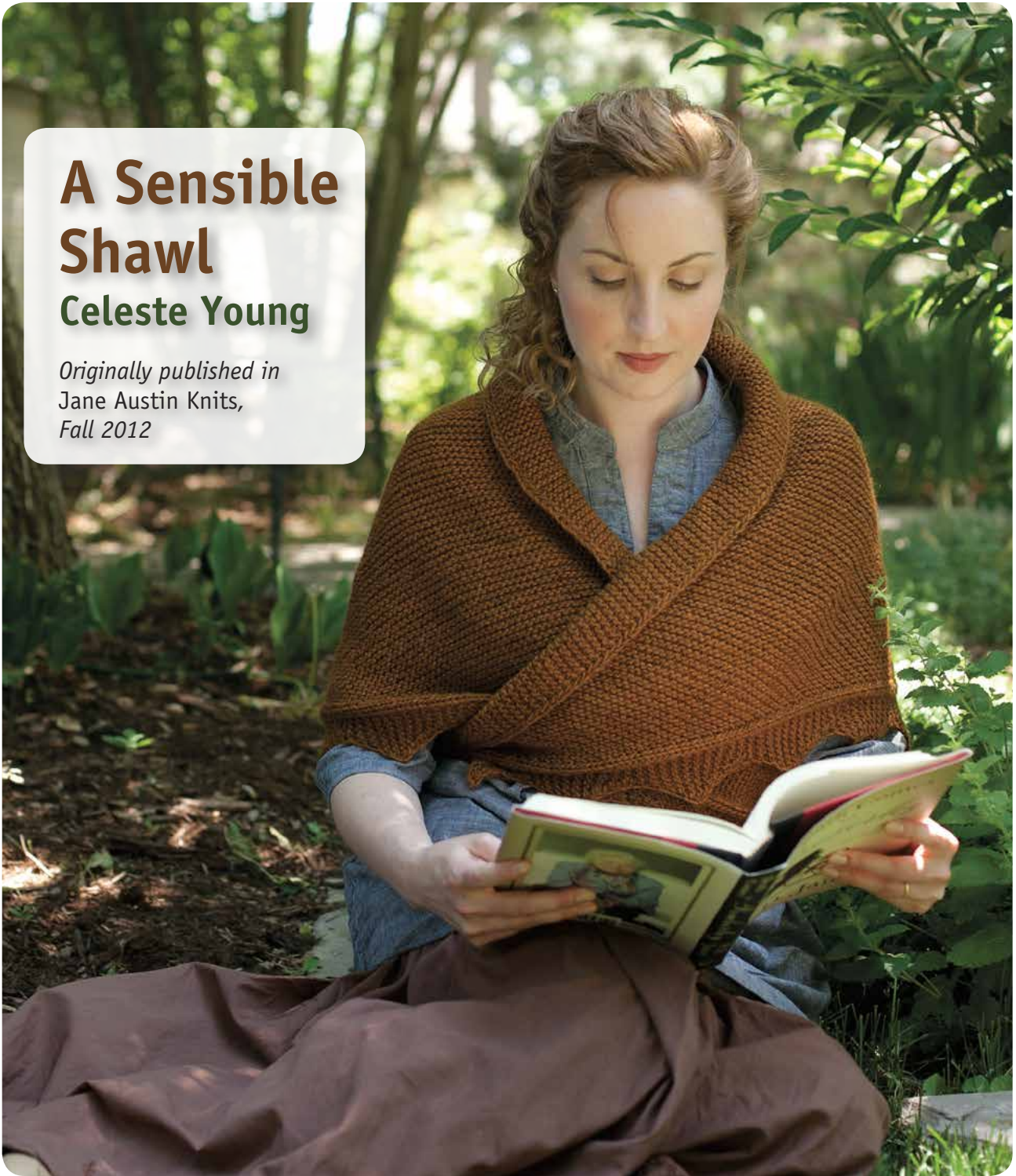


A Sensible Shawl

Celeste Young

*Originally published in
Jane Austin Knits,
Fall 2012*



Christa Tippmann and Ann Sabin Swanson

A Sensible Shawl originally published in *Jane Austin Knits*, Fall 2012.



A SENSIBLE SHAWL

Celeste Young

This shawl grew out of a desire for a warm, comfortable shawl that was wide enough to cross the body and tie in back, leaving the hands free to knit, work in the garden, and around the house. The Van Dyke border is adapted from The Knitter's Companion series written by Mrs. Mee and Ms. Austin throughout the 1800s. I updated it to be knitted on and shaped with the shawl—a pretty and practical edging. Using a warm single-ply yarn, the shawl is rustic and lovely—the perfect balance of beauty and function.

FINISHED SIZE 50" wide excluding I-cords and tabs (96" wide from I-cord CO to I-cord BO); 27" deep from top edge to bottom point.

YARN Brown Sheep Lamb's Pride Worsted (85% wool, 15% mohair; 190 yd [174 m]/113 g); #M178 warm caramel, 5 skeins.

NEEDLES Size 8 (5 mm); 32" circular (cir) and double-pointed (dnp) for I-cord.

NOTIONS Markers (m); tapestry needle.

GAUGE 17 sts and 32 rows = 4" in garter st.

NOTE

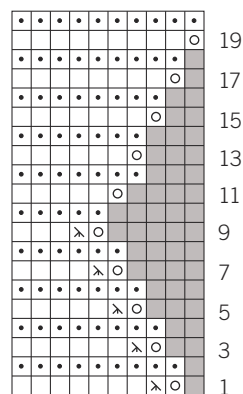
The width and depth of this shawl is easily adjusted by knitting more or fewer repeats of the Van Dyke Border pattern. As written, this shawl has nine-and-a-half Van Dyke Border pattern repeats along each edge, with one repeat worked in the center. If using yarn of unknown yardage or different gauge, work increases until yarn is forty-percent gone, then work center repeat, then work decreases for other side.

FIRST I-CORD

Using dnp, CO 4 sts. Work 4-st I-cord (see page 4) for 14".

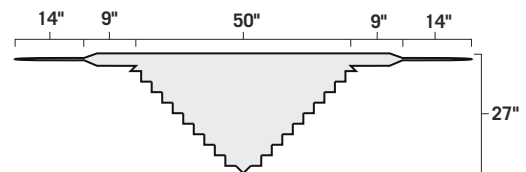


Van Dyke Border



Key

- knit on RS; purl on WS
- ◼ purl on RS; knit on WS
- ◯ bring yarn from back to front over needle to yo
- ⋈ sl1 wyf-k2tog-ssso
- no stitch



FIRST TAB

Cont working back and forth on one needle as follows:

Row 1: (RS) K1, k1f&b, k2—5 sts.

Row 2 and all WS rows: Sl 1 st pwise wyf, p1, knit to last 2 sts, p2.

Row 3: Sl 1 st pwise wyb, k1, k1f&b, k2—6 sts.

Row 5: Sl 1 st pwise wyb, k1, k1f&b, k1f&b, k2—8 sts.

Row 7: Sl 1 st pwise wyb, k1, k1f&b, k2, k1f&b, k2—10 sts.

Row 9: Sl 1 st pwise wyb, k1, k1f&b, k4, k1f&b, k2—12 sts.

Row 11: Sl 1 st pwise wyb, k1, k1f&b, k6, k1f&b, k2—14 sts.

Row 13: Sl 1 st pwise wyb, knit to end.

Row 14: Sl 1 st pwise wyf, p1, knit to last 2 sts, p2.

Rep Rows 13 and 14 until tab measures 9" from end of I-cord, ending after a WS row.

SHAWL

Note: Change to cir when sts no longer fit comfortably on dpn. Do not join; work back and forth in rows. With WS still facing, pm, then use the backward-loop method (see page 4) to CO 10 sts—24 sts.

Inc row: (RS) Work Van Dyke Border chart to m, sl m, k1, k1f&b, knit to end—1 shawl st inc'd.

Next row: (WS) Sl 1 st pwise wyf, p1, knit to 2 sts before m, p2, sl m, work in Van Dyke Border chart to end. Rep the last 2 rows until 9 reps of the Van Dyke Border chart are complete, then work 10 more rows, ending after Row 10 of chart—114 sts total; 5 border sts, 109 shawl sts. **Next row:** (RS) Work Van Dyke Border chart to m, sl m, knit to end. **Next row:** (WS) Sl 1 st pwise wyf, p1, knit to 2 sts before m, p2, sl m, work Van Dyke Border chart to end. Rep the last 2 rows 9 more times, ending after Row 10 of chart.

Dec row: (RS) Work Van Dyke Border chart to m, sl m, k1, ssk, knit to end—1 shawl st dec'd.

Next row: (WS) Sl 1 st pwise wyf, p1, knit to 2 sts before m, p2, sl m, work in Van Dyke Border chart to end. Rep the last 2 rows until 20 reps of the Van Dyke Border chart are complete, ending after Row 20 of chart—24 sts total; 10 border sts, 14 shawl sts.

BO border sts: (RS) BO 8 sts kwise, sl rem st on right-hand needle to left-hand needle

and k2tog, ssk, knit to end—14 sts.

SECOND TAB

Row 1: (WS) Sl 1 st pwise wyf, p1, knit to last 2 sts, p2.

Row 2: Sl 1 st pwise wyb, knit to end. Rep Rows 1 and 2 until tab measures 8" from end of BO of border sts, ending after a WS row.

Shape Tab:

Dec row: (RS) Sl 1 st pwise wyb, ssk, knit to last 3 sts, k2tog, k1—2 sts dec'd.

Next row: Sl 1 st pwise wyf, p1, knit to last 2 sts, p2.

Rep the last 2 rows 3 more times, then work dec row once more—4 sts rem. Do not turn work.

SECOND I-CORD

Slide sts back to dpn (with RS facing,



working yarn should be attached to the last st worked, hanging off the left side of work). Work I-cord for 14". **Dec row:** [k2tog] twice—2 sts rem. **Final row:** K2tog—1 st rem. Break yarn and draw through rem st.

FINISHING

Weave in ends and block to finished measurements.

Celeste Young teaches knitting, crochet-ing, and spinning at Trumpet Hill . . . Fine Yarns & Accents in Albany, New York. She often knits while watching *Lost in Austen*, which is almost as good as reading Jane Austen. She is thrilled to be pursuing level three of the Knitting Guild of America (TKGA) Master Knitting Program. Find her online at www.celesteyoungdesigns.com and on www.ravelry.com as celknits.



ABBREVIATIONS

beg	beginning; begin; begins	rib	ribbing
bet	between	rnd(s)	round(s)
BO	bind off	RS	right side
CC	contrasting color	sc	single crochet
ch	chain	sk	skip
cm	centimeter(s)	Sk2p	slip 1 st kwise, k2tog, pass sl st over—2 sts dec'd
cn	cable needle	sl	slip
CO	cast on	sl st	slip stitch (sl 1 st pwise unless otherwise indicated)
cont	continue(s); continuing	sp	space
dc	double crochet	ssk	slip 1 kwise, slip 1 kwise, k2 sl sts tog tbl (decrease)
dec(s)	decrease(s); decreasing	ssp	slip 1 kwise, slip 1 kwise, p2 sl sts tog tbl (decrease)
dpn	double-pointed needle(s)	sssk	slip 3 sts kwise individually, then knit them tog tbl—2 sts dec'd
fol	following; follows	st(s)	stitch(es)
g	gram(s)	St st	stockinette stitch (knit on RS, purl on WS)
inc	increase(s); increasing	tbl	through back loop
k	knit	tog	together
k1f&b	knit into front and back of same st	WS	wrong side
k2tog	knit two stitches together	wyb	with yarn in back
k3tog	knit three stitches together	wyf	with yarn in front
kwise	knitwise	yo	yarn over
m(s)	marker(s)	*	repeat starting point (i.e., repeat from *)
M1	make one (increase)	**	repeat all instructions between asterisks
MC	main color	()	alternate measurements and/or instructions
mm	millimeter(s)	[]	instructions that are to be worked as a group a specified number of times
p	purl		
p1f&b	purl into front and back of same st		
p2tog	purl two stitches together		
patt(s)	pattern(s)		
pm	place marker		
pssso	pass slipped stitch over		
p2sso	pass two slipped stitches over		
pwise	purlwise		
rem	remain(s); remaining		
rep	repeat; repeating		
rev St st	reverse stockinette stitch (purl on RS, knit on WS)		

Backward-Loop Cast-On

*Loop working yarn and place it on needle backward so that it doesn't unwind. Repeat from *.



I-Cord

With double-pointed needle, cast on desired number of stitches. *Without turning the needle, slide the stitches to other end of the needle, pull the yarn around the back, and knit the stitches as usual; repeat from * for desired length.

