

Compass Rose Shawl to Knit

Katrina King

*Originally published in
PieceWork July-August 2014*



Joe Coca

Compass Rose Shawl to Knit originally published in PieceWork, July-August 2014.

Compass Rose Shawl to Knit

KATRINA KING



Envelope yourself in Katrina King's dazzling Compass Rose Shawl. The shawl is knitted in the round from the center out with a knitted-on wave edging.

The exact origin of the compass rose is unknown. Ancient Greeks developed an 8-point system using the four cardinal directions and the four winds. A 12-point system was taught in the academies of Europe during the medieval era, but mariners created their own 8-point compass. A full compass rose contains 32 points, and mariners were expected to recite the names, also known as “boxing the compass.” Cartographers began adding the rose to maps to mark direction in the 1300s, and the 8-point is the most often seen.

This is the basis for the design of this shawl and the most recognized depiction. I find the compass rose to be an elegant design and representative of finding one's own path. This piece is knitted in the round from the center out with a knitted-on wave edging.

MATERIALS

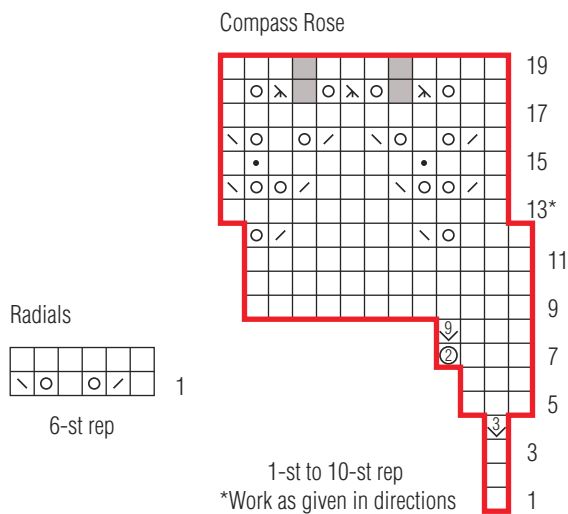
- ◆ Jagerspun Zephyr, 50% merino wool/50% silk yarn, laceweight, 5,040 yards (4,608.6 m)/16 ounce (453.6 g) cone, 1 cone of Copper; this project requires about 12 ounces (340 g); www.jaggeryarn.com
- ◆ Needles, circular, 20 and 40 inches (50 and 100 cm), and set of double pointed, size 1 (2.25 mm) or size needed to obtain gauge
- ◆ Knitter's Pride Crochet Hook, steel, size 14 (.5 mm); www.knitterspride.com
- ◆ Seed beads, size 8/0 glass, 35 gram (1.2 oz)/container, 1 container each of Silver Lined Dark Gold AB and Silver Lined Transparent Topaz; containers hold about 1,400 beads; this project requires about 950 Dark Gold and 660 Transparent Topaz; www.earthfaire.com
- ◆ Markers
- ◆ Tapestry needle

Finished size: 66 inches (167.6 cm) in diameter

Gauge: 32 sts and 40 rnds = 4 inches (10.2 cm) in St st, after blocking

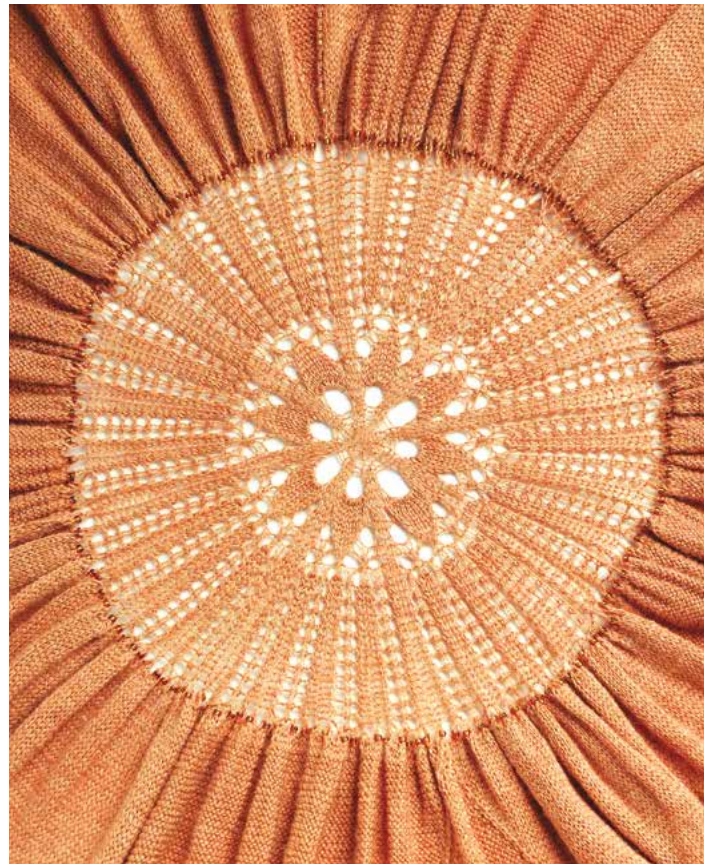
SPECIAL STITCH

K1 with Bead: K the st to be beaded, slide the color bead indicated onto crochet hook, insert crochet hook pwise into st just k and sl st onto crochet hook, slide bead down hook and onto st, then return st to right needle.



Charts may be photocopied for personal use.

The charts for this project are available in PDF format at pieceworkmagazine.com/Charts-Illustrations.



The back of Katrina King's Compass Rose Shawl, showing the motif and the gathers.

INSTRUCTIONS

Note: See above and page 5 for Abbreviations and Techniques.

Shawl

With dpn and using Judy's magic method, CO 8 sts—4 sts on each of 2 dpn. Pm and join to work in the rnd. Work Rows 1–19 of Compass Rose Chart once, working Row 13 as foll.

Row 13: Remove beg-of-rnd m, k1, pm for new beg of rnd, work in patt to end.

80 sts after Row 19 is complete.

Next Rnd: *K2, [yo, k1, yo, (k1, p1, k1) in next st] 3 times, [yo, k1] 2 times; rep from * to end of rnd—192 sts.

K 1 rnd. Work Rows 1 and 2 of Radials Chart 10 times.

Next Rnd: *K1, yo; rep from * to end of rnd—384 sts.

Next Rnd: *K1 with Topaz bead, (k1, p1, k1, p1) in yo; rep from * to end of rnd—960 sts.

K 2 rnds.

Next Rnd: *K1 with Gold bead, p117, k2tog, pm, yo, pm, k1 with Gold bead, yo, pm, ssk, k117, pm; rep from * 3 more times.

Next Rnd: *K1, p to 1 st before m, [k1, sl m] 2 times, k1, p1, sl m, k to m; rep from * 3 more times.

Next Rnd: *K1 with Gold bead, p to 2 sts before m, k2tog, sl m, yo, k to m, sl m, k1 with Gold bead, p to m, yo, sl m, ssk, k to m; rep from * 3 more times.

Next Rnd: *K1, p to 1 st before m, k1, sl m, k to m, sl m, k1, p to m, sl m, k to m; rep from * 3 more times.

Rep last 2 rnds 58 more times—58 p sts between 1st bead and 1st k2tog.

Next Rnd: *K1 with Gold bead, p to 2 sts before m, work Row 1 of Triangle Mesh Chart over 3 sts (inc'd to 4 sts), pm as shown on chart, work ssk as shown on chart, k to m, sl m, k1 with Gold bead, p to 3 sts before m, work Row 1 of Triangle Mesh Chart over 2 sts (dec'd to 1 st), pm, finish Row 1 of chart, k to m; rep from * 3 more times—8 reps of Triangle Mesh Chart.

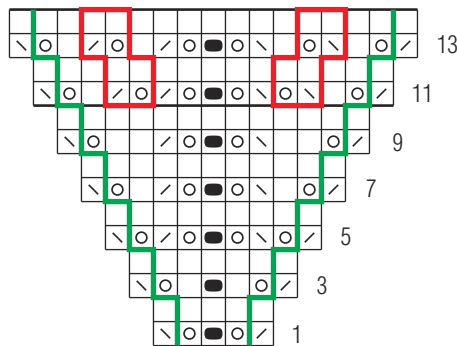
Next Rnd: *K1, p to 1 st before m, work Triangle Mesh Chart to 1 st after 2nd m, k to m; rep from * 7 more times.

Next Rnd: *K1 with Gold bead, p to 2 sts before m, work Triangle Mesh Chart to 2 sts after 2nd m (dec'd to 1 st after 2nd m), k to m; rep from * 7 more times.

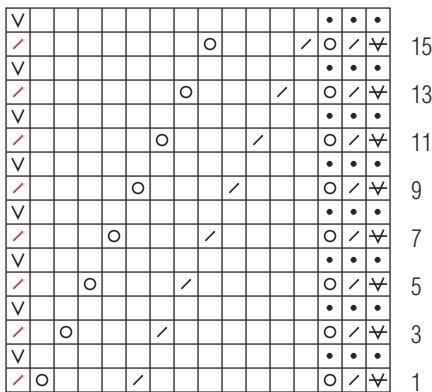
Key

- k on RS; p on WS
- p on RS; k on WS
- yo
- / k2tog
- / k2tog (last edging st and next body st)
- \ ssk
- x sl 1, k2tog, pssso
- ⊙ [yo] 2 times
- Ⓜ (k1, yo, k1) in same st
- Ⓜ ([k1, p1] 4 times, k1) in double yo
- k 1 with Topaz bead
- ∨ sl 1 wyf on RS
- ∨ sl 1 wyf on WS
- no st
- patt rep
- marker position

Triangle Mesh



Edging



16 sts



The back of Katrina King's Compass Rose Shawl, showing the motif and the gathers.

Cont in patt, work Rows 4–10 of chart once, then rep Rows 11–14 of chart 26 times, then work Rows 11 and 12 once more—no sts between 1st bead and 1st k2tog.

Next Rnd: Remove beg-of-rnd m, unknit 1 st, pm for new beg of rnd, [sl 1 kwise, k2tog, pssso, sl m, yo, k1, *ssk, yo; rep from * to 3 sts before Topaz beaded st, k1, ssk, yo, k1 with Topaz bead, yo, k2tog, k1, *yo, k2tog; rep from * to 1 st before m, k1, yo, sl m] 7 times.

Next Rnd: *K1 with Gold bead, k119; rep from * to end of rnd.

Edging

Using the cable method, CO 16 sts onto left needle. Work Rows 1–16 of Edging Chart 120 times—16 sts rem. BO all sts. Join BO sts to CO sts.

Finishing

Weave in loose ends. Block to measurements.

Besides fiber arts, KATRINA KING is also passionate about cake making. When not tangled in laceweight yarn or covered in sugar, she can be found chasing her daughters to archery and gymnastics practice in and around Fort Collins, Colorado.

Judy's Magic Cast-On

This amazingly simple cast-on is named for its founder, Judy Becker. It wraps the yarn around two parallel needles in such a way as to mimic a row of stockinette stitch between the two needles.

Leaving a 10-inch (25.5-cm) tail, drape the yarn over one needle, then hold a second needle parallel to and below the first and on top of the yarn tail (Figure 1).

Bring the tail to the back and the ball yarn to the front, then place the thumb and index finger of your left hand between the two strands so that the tail is over your index finger and the ball yarn is over your thumb (Figure 2). This forms the first stitch on the top needle.

*Continue to hold the two needles parallel and loop the finger yarn over the lower needle by bringing the lower needle over the top of the finger yarn (Figure 3), then bringing the finger yarn up from below the lower needle, over the top of this needle, then to the back between the two needles.

Point the needles downward, bring the bottom needle past the thumb yarn, then bring the thumb yarn to the front between the two needles and over the top needle (Figure 4).

Repeat from * until you have the desired number of stitches on each needle (Figure 5).

Remove both yarn ends from your left hand, rotate the needles like the hands of a clock so that the bottom needle is now on top and both strands of yarn are at the needle tip (Figure 6).



Figure 1

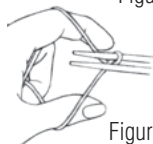


Figure 2



Figure 3



Figure 4

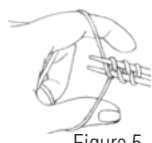


Figure 5



Figure 6

ABBREVIATIONS

beg	beginning; begin; begins	M1R (L)	make one right (left)	sl st	slip stitch (sl 1 st pwise unless otherwise indicated)
bet	between	p	purl	ssk	slip 1 kwise, slip 1 kwise, k2 sl sts tog tbl (decrease)
BO	bind off	p1f&b	purl into front and back of same st	ssp	slip 1 kwise, slip 1 kwise, p2 sl sts tog tbl (decrease)
CC	contrasting color	p2tog	purl two stitches together	st(s)	stitch(es)
cm	centimeter(s)	patt(s)	pattern(s)	St st	stockinette stitch
cn	cable needle	pm	place marker	tbl	through back loop
CO	cast on	psso	pass slipped stitch over	tog	together
cont	continue(s); continuing	p2sso	pass two slipped stitches over	WS	wrong side
dec(s)	decrease(s); decreasing	pwise	purlwise	wyb	with yarn in back
dpn	double-pointed needle(s)	RC	right cross	wyf	with yarn in front
foll	following; follows	rem	remain(s); remaining	yo	yarn over
g	gram(s)	rep	repeat; repeating	*	repeat starting point (i.e., repeat from *)
inc	increase(s); increasing	rev St st	reverse stockinette stitch	**	repeat all instructions between asterisks
k	knit	rib	ribbing	()	alternate measurements and/or instructions
k1f&b	knit into front and back of same st	rnd(s)	round(s)	[]	instructions that are to be worked as a group a specified number of times
k2tog	knit two stitches together	RS	right side		
kwise	knitwise	rev sc	reverse single crochet		
LC	left cross	sc	single crochet		
m(s)	marker(s)	sk	skip		
MC	main color	sl	slip		
mm	millimeter(s)				
M1	make one (increase)				