



Susan Greening Davis's ring bearer's pillow.
Photos by Joe Coca

Counted-Thread Ring Bearer's Pillow

SUSAN GREENING DAVIS

Susan Greening Davis provides complete instructions for making this contemporary ring bearer's pillow that will make the bridal couple's day even more special.

MATERIALS

- ♦ R&R Reproductions Fabric, 20-count 100% linen fabric, Blue Wave, 11 x 11 inches (27.9 x 27.9 cm), 1 piece
- ♦ Rainbow Gallery Splendor, 100% silk 12-ply thread, 8 yards (7.3 m)/card, 1 card each of #S800 Cool White and #S916 Dark Antique Blue
- ♦ Rainbow Gallery Splendor Ribbon, 100% silk ribbon, 4 yards (3.7 m)/card, 4 mm wide, #RS915 Antique Blues, 1 card
- ♦ Fabric, 100% cotton, color to match linen fabric, 11 x 11 inches (27.9 x 27.9 cm), 1 piece
- ♦ John James Needles, tapestry sizes 18 and 22
- ♦ Stretcher bars, 12 x 12 inches (30.5 x 30.5 cm)
- ♦ Fiberfill

Finished size: 4 7/8 x 5 7/8 inches (12.4 x 14.9 cm), excluding ribbon trim

Visit pieceworkmagazine.com/abbreviations for terms you don't know.

NOTES

Use the size 22 tapestry needle unless otherwise noted. Each square on the chart equals two threads. Referring to the chart, work from left to right.

INSTRUCTIONS

Mount the linen on the frame. Using four strands of #S916, cross-stitch the heart outline. Beginning with the column of pattern stitches closest to the outside left edge of the chart and with double straight cross-stitch and two strands of thread, use #S800 for stitches 1 through 12 (see diagram) and #S916 for stitches 13 through 16.

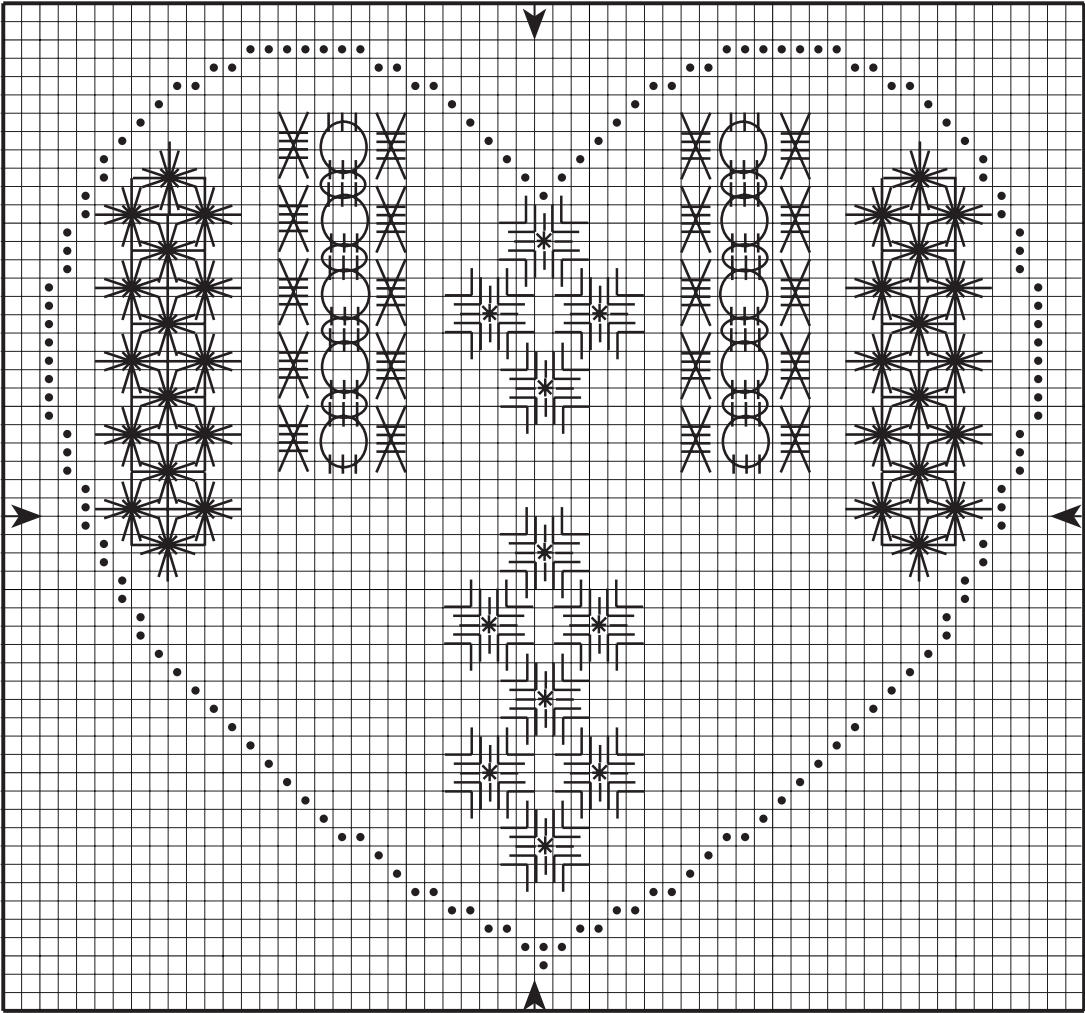
For the second column, work the first set of cross-stitch variation with flat tie-downs: Use two strands of #S916 for the underlying cross-stitches and four strands of #S800 for the horizontal tie-downs.

For the stitches next to the cross-stitch variations, starting at first journey (see diagram), and with the guilloche stitch and four strands of thread, use #S916 for the base stitches and #S800 for the woven threads. Turn the fabric 180 degrees; work the second journey according to the diagram. Work the second set of the cross-stitch variation stitches with flat tie-downs.

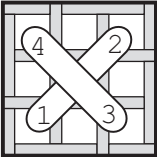
For the third column, work the flat stitch medallions with central Smyrna cross-stitches: Use four strands of #S800 for the medallions and two strands of #S916 for the cross-stitches. Work the last two columns on the chart with cross-stitch variation, guilloche, and double straight cross-stitch.



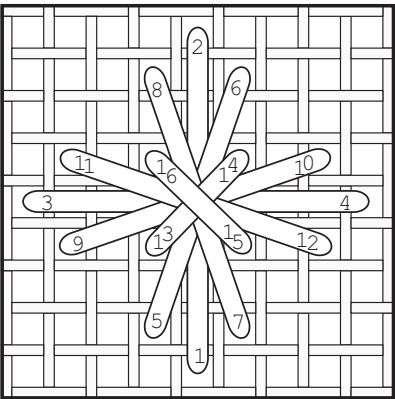
Chart



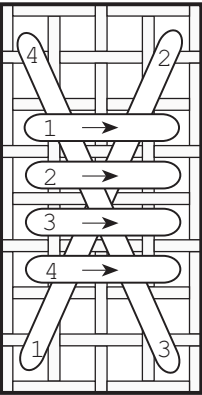
Cross-stitch over two



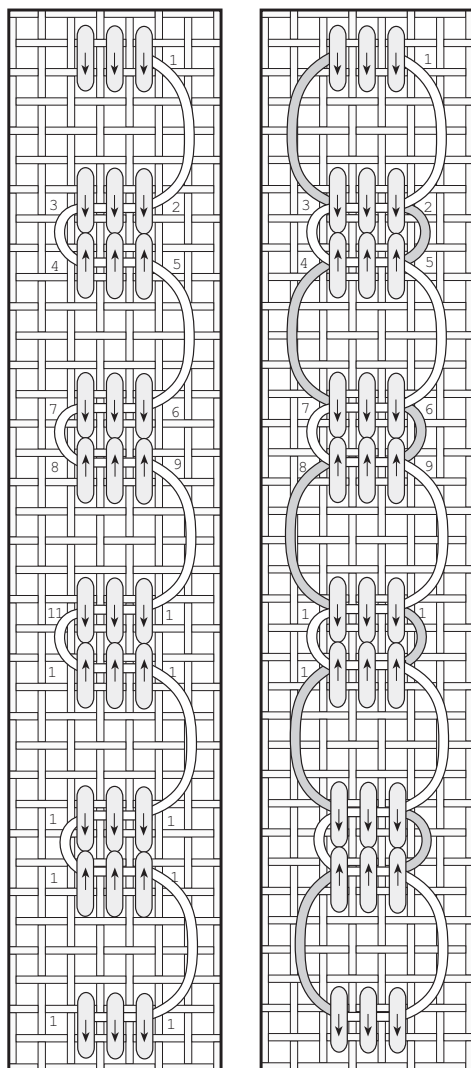
Double straight cross-stitch



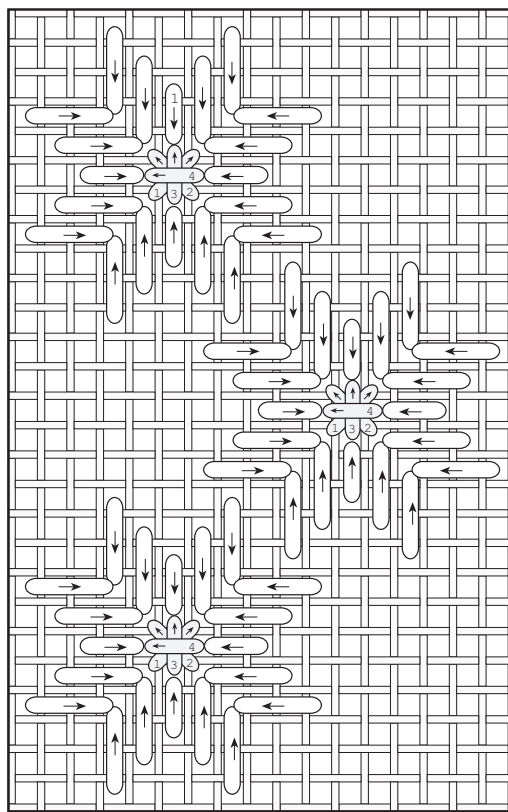
Cross-stitch variation with flat-tie downs



Guilloche stitch
First journey Second journey



Flat stitch medallions with central
Smyrna cross-stitches



Remove the linen from the frame and trim 1/2 inch (1.3 cm) beyond the cross-stitched outline. Cut out the cotton fabric using the linen as a pattern. With right sides together, sew the two pieces of fabric together 1/4 inch (6 mm) outside the cross-stitched outline, leaving a 2-inch (5.1-cm) opening along one straight edge. Clip notches in the seam allowance. Turn the fabrics right sides out, stuff with fiberfill, and slip-stitch the opening closed.

Thread the size 18 needle with one 14-inch (35.6-cm) length of the ribbon and knot the ribbon 3/4 inch (1.9 cm) from the end opposite the needle. Stitch the ribbon around the outside edge of the cross-stitched outline by catching one linen thread and twisting the ribbon and needle. If the ribbon runs out, tie a knot

and trim the tails and let them dangle; repeat the above process with a new length of ribbon. Cut four 16-inch (40.6-cm) lengths of the ribbon for the bow, tack in the center of the heart-shaped pillow, and tie into a bow; tie the rings to the ribbon tails.

SUSAN GREENING DAVIS whose trademark is Still Stitching, Susan, has been involved in the needlework industry for thirty years, first as the owner of a needlework shop and then as a canvas painter and designer. She travels extensively to teach needlework classes to retailers and consumers. In 2001, DMC presented an international teaching award to her. She appears in episodes #1749 and #1846 on the *Carol Duvall Show* on the Home and Garden Television network. Visit her website at susangreeningdavis.com.