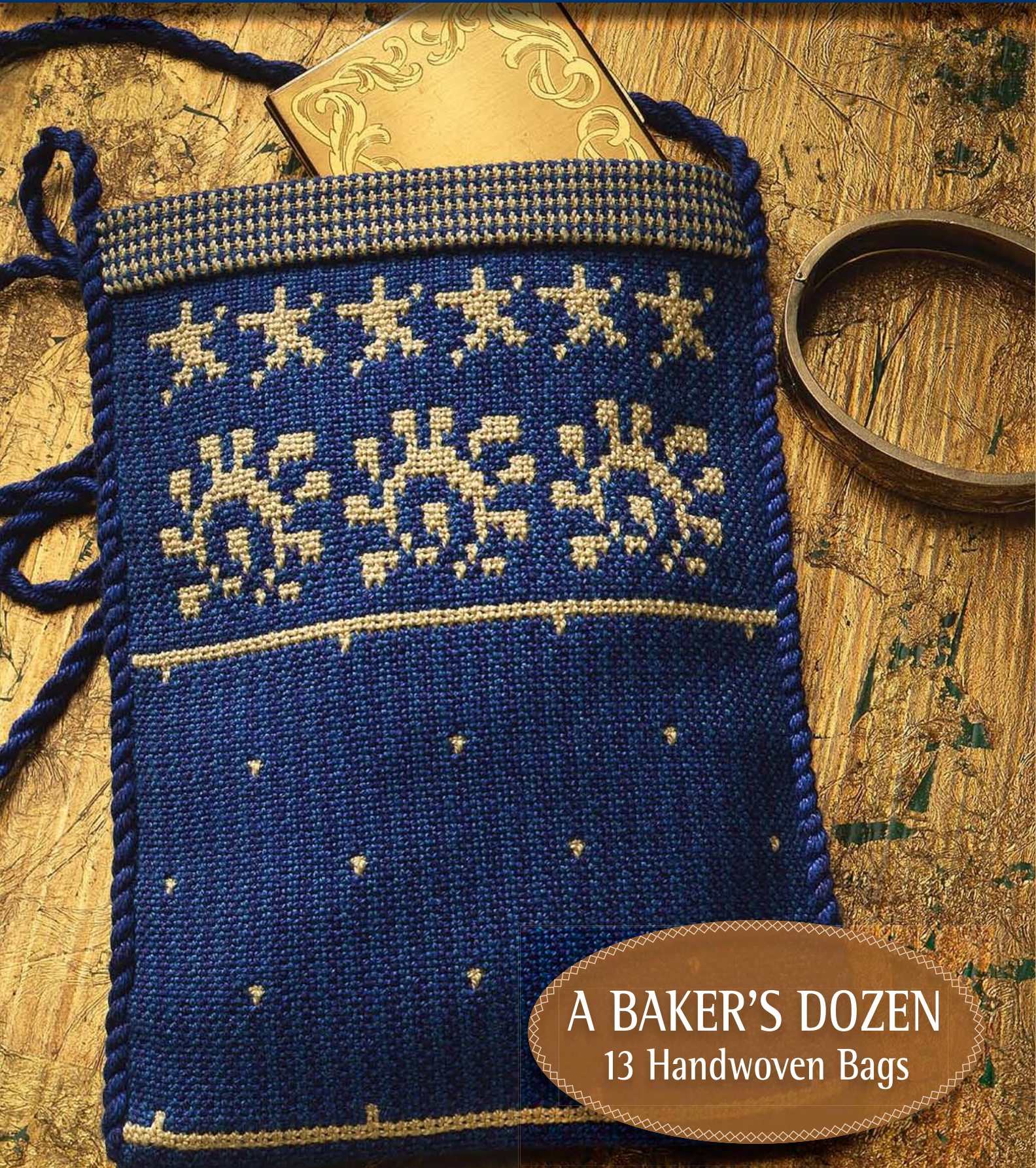


BEST OF
HANDWOVEN



A BAKER'S DOZEN
13 Handwoven Bags

Weavers love bags! This collection of projects will help you fill your life with just the right handwoven bag for every occasion: You'll find bag sizes from large totes for carrying almost anything to small luxury evening bags with sequined, pile, or silky surfaces. You can choose to weave a briefcase, diaper bag, purse organizer, envelope for storing fine lingerie, cosmetic bag, carry-all, or eyeglasses case, and more. Not only will these projects result in beautiful bags you'll love to use, but you'll also learn how to create weft pile, weave boundweave on opposites, do doubleweave pick-up, produce a ripply seersucker, dye an ikat warp, and stuff doubleweave pockets with sequins. Project instructions include how to assemble and sew the bags—only the most basic sewing skills are required.

Madelyn

CONTENTS

Abalone-Shell Eyeglasses Cases Alison Irwin	1
Ribbons-and-Lace Envelope in Linen Linda Heinrich.....	3
Seersucker Cosmetic Bag and Slippers Barbara Smith Eychaner	5
Sequined Evening Bag Sigrid Piroch.....	7
Evening Bag with Looped Pile Weft Jane Patrick	9
Plaited-Twill Purse Organizer and Card Case Sharon Alderman	11
Carpet-Bag Briefcase in Boundweave Linda Ligon	13
Easy-Sew Striped Tote Margaret Gaynes	15
Easy-Ikat Striped Tote Margaret Gaynes	17
Rag-Woven Loom-Shaped Diaper Bag Eve Bostic	19
Sun and Stars Doubleweave Pouch Alison Irwin.....	21
Purse in Weft-Faced Block Weave Nancy Arthur Hoskins	24
Hold-All Purse in Summer and Winter Dee Jones	27
Tips for Planning, Hemstitching, and Fringing	30

HANDWOVEN

EDITORIAL

EDITOR IN CHIEF *Madelyn van der Hoogt*
CREATIVE DIRECTOR *Linda Ligon*

CREATIVE SERVICES

DESIGNER *Elizabeth R. Mrofka*
PRODUCTION DIRECTOR *Trish Faubion*
PRODUCTION COORDINATOR *Jeff Rowles*
PRODUCTION EDITOR *Nancy Arndt*

PUBLISHING

PUBLISHER *John P. Bolton*
DIRECTOR OF MARKETING *Mary KinCannon*
MARKETING SPECIALIST *Whitney Dorband*

All contents of this issue of *Handwoven* are copyrighted by Interweave Press LLC, 2011. All rights reserved. Projects and information are for inspiration and personal use only. Reproduction in whole or in part is prohibited, except by permission of the publisher.

CONTACT US

For sales information,
call (800) 272-2193,
e-mail sales@interweave.com.

For editorial inquiries,
call (970) 613-4650,
e-mail handwoven@interweave.com.

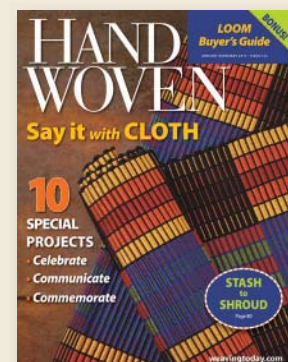
Visit the Interweave website at
interweave.com

Best of Handwoven: 13 Handwoven Bags
ISBN 978-1-59668-533-8

JOIN TODAY!

weavingtoday.com

for *Handwoven* magazine
and back issues, weaving
books, free projects,
resources, events, and more!



ABALONE-SHELL EYEGLASSES CASES

ALISON IRWIN

PROJECT NOTES

An abalone shell with its washes of pearly pinks layered with deeper shades of aqua and sea green inspired the colors of this fabric.

FABRIC DESCRIPTION

Shadow weave.

FINISHED DIMENSIONS

Fabric 7½" by 18" for two glasses cases, 3¼" by 6½" each.

WARP and WEFT

10/2 pearl cotton at 4,200 yd/lb: 124 yd blue-green (Duck #60) and 38 yd beige (Deep Beige #96) for warp, 45 yd mint (Mint #92) and 18 yd gray blue-green (Mineral #95) for weft, and 152 yd pink (Light Pink #14) for warp and weft. 30 yd gray blue-green (Mineral #95) for cording.

YARN SOURCES

UKI pearl cottons are available from most weaving retailers.

NOTIONS

Matching thread, ¼ yd matching lining fabric, ½ yd cotton flannel for interlining, decorative button.

TOTAL WARP ENDS 199.

WARP LENGTH

1 ¼ yd (allows take-up, shrinkage, and 25" loom waste).

E.P.I. 24. **WIDTH IN REED** 8⅓" **P.P.I.** 24

TAKE-UP and SHRINKAGE 10% in width and length.

WEAVING

Weave the fabric following the draft for 20".

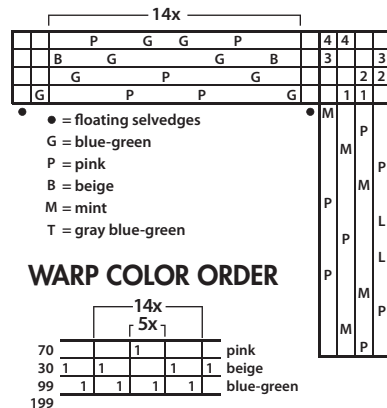
FINISHING

Machine wash on gentle cycle in hot water with mild detergent. Tumble dry; steam-press both sides of the fabric.

ASSEMBLY

Case on a string Cut two rectangles, each 3½" by 7" from the handwoven fabric, the lining fabric, and the interlining. Stack one piece of interlining and one piece of handwoven face up and one piece of lining face down; stitch across the narrow top of the case and turn right sides out. Stack the other interlining and the other piece of handwoven face up and the sewn stack with the handwoven side down (so that the two handwovens

DRAFT



face each other), lining side up and the other piece of lining facedown. With ¼" seams, stitch down one long side, across the bottom, and up the other long side. Trim the seams to ⅛", reach between the two pieces of handwoven to turn the case right sides out. Turn in the remaining raw edges at the top and sew the edges together by hand.

For the 60" cord, cut 6 strands of gray blue-green, each 140" long. Tie a knot in one end and secure to a stationary object.

Twist the group of strands tightly clockwise until they kink. Fold the group in half and let the two halves twist together. Fold the cord in half again and tie an overhand knot about 1½" from the end. Trim to 1¼" and ravel out the fringe below the knot. Placing the knot at the middle of the bottom of the case, pin the cord along each side of the case and along the bottom and stitch in place by hand.

Buttoned Case Cut a rectangle, 3½" by 7" from handwoven fabric, lining fabric, and interlining. Cut another rectangle, 3½" by 10", from each. Stack the smaller pieces of interlining, handwoven faceup, and lining facedown; stitch across the narrow top of the case and turn right sides out. Stack the longer pieces of interlining and handwoven faceup, then the sewn stack with the lining side up and handwoven side up (so that the two handwoven pieces face each other), and the longer piece of lining facedown, matching the edges at the lower end of the case. Turn up ⅝" of the longer piece of lining at the lower edge of the case to provide an opening for turning the case after stitching. With ¼" seams, stitch around all sides, rounding the corners and leaving the lower folded edge of the lining free of the stitching. Trim the seams to ⅛", reach between the two pieces of lining to turn the case lining side out (stitch down the folded edge of the lining, if you like); then reach between the two pieces of handwoven to turn the case right side out.

For the 28" cord for the edge, cut 6 strands of greenish-blue, each 64" long. Tie a knot in one end and secure to a stationary object. Twist the group of strands tightly clockwise until they twist back on themselves when the tension is slightly released. Fold the group in half and let the groups untwist around each other.

Starting and ending at the center of the flap and making a loop for the button, pin the cord around the edge of the case and stitch in place by hand. Sew the button in place beneath loop.



Originally published in *Handwoven*®, March/April 1998, pp. 39, 78
© Interweave Press LLC. Not to be reprinted. All rights reserved.



Originally published in *Handwoven*®, March/April 1997, pp. 61, 81–82
© Interweave Press LLC. Not to be reprinted. All rights reserved.

SEERSUCKER COSMETIC BAG AND SLIPPERS

BARBARA SMITH EYCHANER

PROJECT NOTES

There are several methods for weaving seersucker fabrics. Differently tensioned stripes of warp create the seersucker effect in this project. You can achieve the two tensions with two separate warp beams (one holding alternate warp sections tighter than the others), but I prefer using only one beam and weighting the looser sections. It's easy, and it works!

FABRIC DESCRIPTION

Plain weave with differential warp tension.

FINISHED DIMENSIONS

Fabric 13" by 45" for a cosmetic bag and 13" by 39" for slipper soles and bands.

WARP and WEFT

Main warp: 10/2 unmercerized cotton at 4,200 yd/lb: 644 yd natural. Seersucker warp: 20/2 pearl cotton at 8,400 yd/lb: 632 yd peach (Peach #115), 204 yd each light gray-green (Scarab #53) and light blue-green (Tyrol #94); seersucker ends are used doubled (6 doubled ends, 12 actual ends per stripe). Weft: 10/2 pearl cotton: 984 yd natural.

YARN SOURCES

UKI pearl cottons are available from most weaving retailers; 10/2 unmercerized cotton is available from Cotton Clouds.

NOTIONS

Simplicity Pattern #8973 was used for these pieces. It is no longer available, so use this project to weave the fabric and go surfing the Internet for slipper and bag patterns. I used matching natural sewing thread, matching natural wide double-fold bias tape, lining fabric, and fusible interfacing (plus polyester fleece, lining fabric, and nonskid fabric for the slipper soles).

TOTAL WARP ENDS

Main (firmly tensioned) warp: 184 ends (includes 2 doubled ends on each side). Seersucker (loosely tensioned) warp: 126 doubled ends (252 total ends).

WARP LENGTH

Main warp: 3½ yd; seersucker warp: 4¼ yd (allows for extra take-up in seersucker warp, shrinkage, and 27" loom waste).

E.P.I. 20. **WIDTH IN REED** 15⅝". **P.P.I.** 22.

TAKE-UP and SHRINKAGE

Main warp: 15% in width, 12% in length.
Seersucker warp: about 35% in length.

WARP COLOR ORDER

	4x						
48	12						light blue-green
48	12						light gray-green
156	12	12	12	12	12	peach	
184	12	8	8	8	8	8	10/2 natural
436							

(The 12 ends in each stripe are used doubled for 6 working ends per stripe.)

WARPING

These instructions are for warping back to front. Wind the main warp and beam (spread to 15" weaving width in a raddle; it will look skimpy because it is only half of the warp). Thread this warp, leaving heddles empty for the seersucker stripes following the draft and color order carefully (note that each stripe of 12 ends is 6 working ends or 6 heddles). Remove lease sticks.

Wind the seersucker warp with the cross at the end of the warp that will be cut. Before leaving the warping board, divide this warp into several chains. I made 7 chains of 3 stripes/chain. Insert lease sticks in the crosses on all the chains. Gently drape the chains over the back beam and thread the doubled seersucker ends in the reserved heddles (2 ends in each heddle). As you thread, tie the seersucker ends in front of the shafts with the main-warp ends to keep them from slipping backward out of the heddles. Finally, sley the reed at 20 ends per inch (consider each doubled 20/2 end as a single end). Tie onto the front apron rod, keeping the ends of the seersucker warp even with the ends of the ground warp. Tie so the main warp is evenly tensioned (the seersucker warp will be loose).

WEAVING

Weave the fabric for 95". The seersucker warp needs only enough tension to open a clear shed. I weighted the chains with used empty yarn cones, threading the chain through the open top of a small cone and then nesting a regular cone into it to secure. The weights need to be repositioned frequently, every two or three advances of the warp beam.

As the shuttle passes through the shed, the seersucker warp threads should sway gently in the direction the weft is moving. If they do not sag enough to be pulled slightly by the weft as it passes, there is too much tension on the warp.

FINISHING AND ASSEMBLY

Secure raw edges. Machine wash the fabric in hot water and machine dry; do not press. Sew and assemble your pieces following your selected pattern.

DRAFT

4			4
3		3	
2		2	
	1	1	
	/	/	
2		2	
1		1	
	/	/	



Originally published in *Handwoven*®, November/December 1989, pp. 53, 78
© Interweave Press LLC. Not to be reprinted. All rights reserved.

SEQUINED EVENING BAG

SIGRID PIROCH

PROJECT NOTES

While this weave may look complicated, it is really quite simple. It is a doubleweave, but the sett is as for a single layer of plain weave. The bottom layer weaves plain weave; the top layer weaves lace units that form pockets into which objects can be placed before the unit is woven closed. The pocket contains the object, yet because of the open sett, the object shows through. For this reason, it is great for glitzy items such as sequins. I used DMC cottons because I like their variegated color selection. 10/2 pearl cotton would work just as well and be less expensive.

FABRIC DESCRIPTION Doubleweave.

FINISHED DIMENSIONS One bag 6¼" by 6¼".

WARP and WEFT

DMC Perle 8 cotton at 4,300 yd/lb, 10 g/95 yd balls, pink variegated #62, 4 balls (475 yd); blue variegated #67, 2 balls (190 yd). 100% Lurex (Astra-Glow) at 3,000 yd/lb, silver, 60 yd.

NOTIONS

8mm silver sequins, pink sewing thread, and an 8" by 12" piece of thin foam and lining (no interfacing was used in this purse), antique handle (or reproduction) measuring 5" across at its widest point. (For a wider handle, plan your fabric wider and longer accordingly.)

TOTAL WARP ENDS 206.

WARP LENGTH

1½ yd (allows take-up, generous loom waste, and sampling). A 1 yd warp is sufficient for a small purse if you do not plan to sample or if you do not need much for loom waste. Calculate yarn needs accordingly.

E.P.I. 24.

WIDTH IN REED 8¾".

P.P.I. 26

WEAVING

Weave 1" tabby, 16 pattern repeats, then 1" tabby with pink variegated cotton and Lurex following the draft. Place sequins in pockets as indicated.

FINISHING

Overcast raw edges as soon as they are cut. Wash gently in

DRAFT

3x			1x		11x						3x			6		6		6		6		6	
						6	6								6	6	6	6	6	6	6	6	
						5	5								5	5	5	5	5	5	5	5	
						4	4	4	4						4	4	4	4	4	4	4	4	
						3	3	3	3						3	3	3	3	3	3	3	3	
						2	2	2	2	2	2	2	2	2	2	2	2	2	2	2	2	2	
						1	1	1	1	1	1	1	1	1	1	1	1	1	1	1	1	1	

○ = metallics
P = place objects in pockets

WARP COLOR ORDER

70	14	14	14	14	14	14	14	14	14	blue
24	2	2	2	2	2	2	2	2	2	metallic
112	14	14	14	14	14	14	14	14	14	pink
206										

warm water with mild soap, being careful not to rub or squeeze the fabric. Rinse with the same care. Roll up in a towel. Block fabric and lay flat to dry. Iron with a cool iron (delicates/low) using a press cloth. Trim threads.

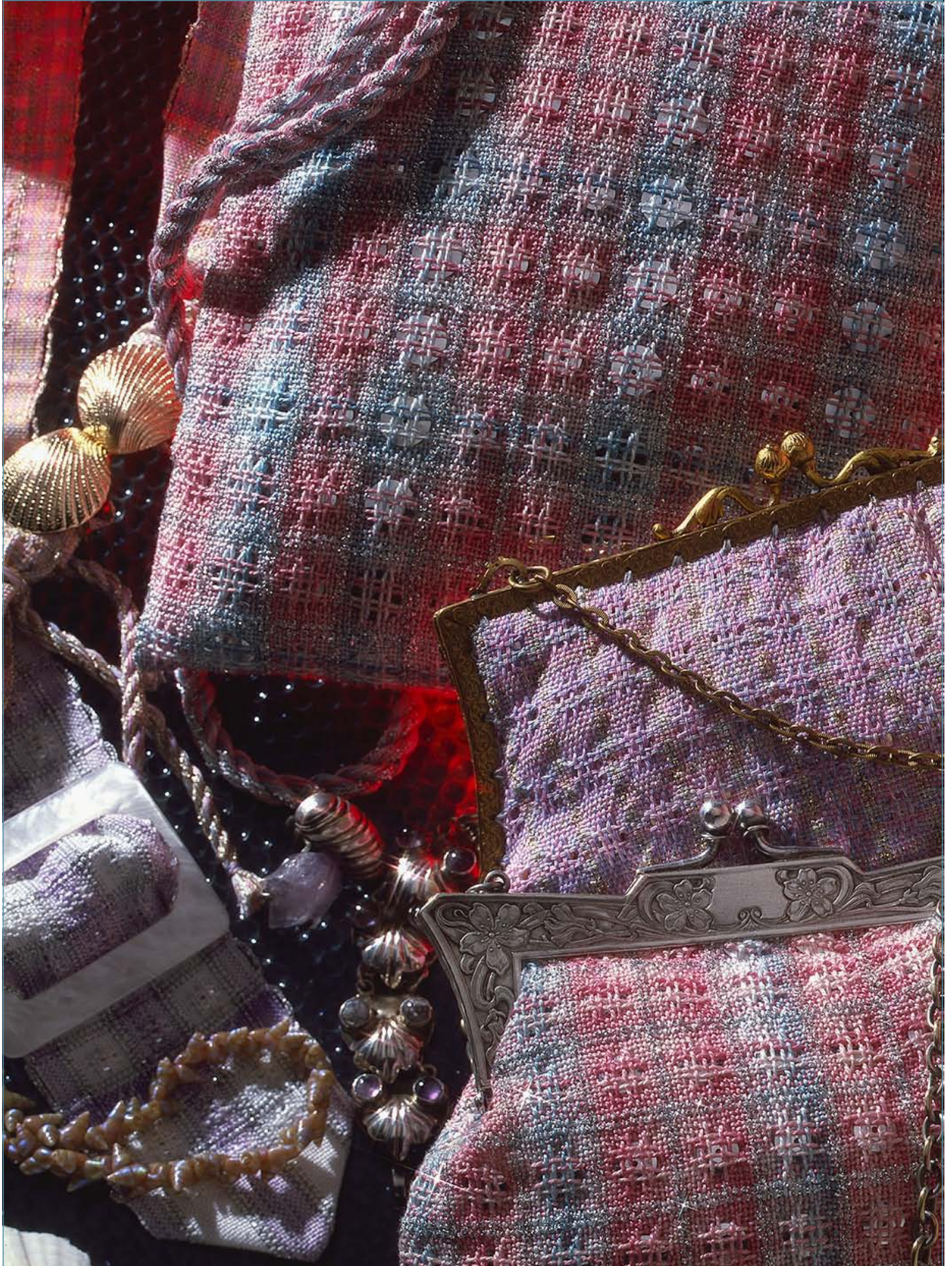
ASSEMBLY AND SEWING

These instructions are for the bottom purse on page 8. If you have an old purse attached to your antique handle, you're in luck because you already have a pattern. If not, figure your pattern from the width of your handle at its widest point and add 2". (This handle is 5", so I began with fabric about 7" wide, which when folded over is square or a little longer including the tabby ends.) This allows for a purse about the same in length as width, plus 1" at each end for mounting on the handle.

Use ¼" seam allowances; pin the fabric with right sides together on a diagonal on each side ¼" in from the bottom to the exact width of the top of the purse where the handle will meet the fabric. Sew this seam, adding 1¼" curve at the corner of the bottom on each side. Clip curve, turn.

Fold the lining in half, right sides together; fold the foam over the lining; pin and stitch the sides of these as one piece ¼" more in from the sides than that of the purse body, on the same diagonal with curved corners. Trim close to the seams but do not turn. Slip the lining unit into the purse body. Trim the foam (not the lining) along the top edge where the fabric and lining will meet with the purse handle. Fold the lining over the foam and baste.

Secure the handwoven fabric to the handle. (This purse has a bar inside the handle over which the fabric is sewn; some antique purses have holes through which it is sewn.) Slip-stitch the lining to the handwoven fabric inside around the handle.



Originally published in *Handwoven*®, January/February 1985, pp. 36; Instruction Supplement, p.10
© Interweave Press LLC. Not to be reprinted. All rights reserved.

EVENING BAG WITH LOOPED PILE WEFT

JANE PATRICK

PROJECT NOTES

This plush, elegant fabric requires only two shafts. The stripes are woven in the weft and turned 90° to make vertical stripes in the bag. The textured surface on the front of the bag is formed by picking up weft loops with a small knitting needle.

FABRIC DESCRIPTION

Weft-emphasis plain weave with picked-up loops.

FINISHED DIMENSIONS One bag 5¾" by 5½".

WARP and WEFT

Warp: 8/2 worsted wool at 2,240 yd/lb: 130 yd Navy.
Weft: 8/2 worsted wool, 25 yd each of Marigold, Aegean Blue, and Elderberry; Radiance Metallic (86% Rayon, 8% Nylon, 6% Metallic) at 6,000 yd/lb, 20 yd. For weft loop rows: Gioiello by Filatura di Crosa (30% merino/30% kid mohair/10% cotton/10% acrylic/20% nylon at 1,880 yd/lb, 70 yd black, used double.

YARN SOURCES

8/2 Maine Line wool by JaggerSpun is available from most weaving retailers, Radiance Metallic and Gioello from Webs.

NOTIONS

Size 2 or 3 knitting needle for picking up loops; matching sewing thread; 1½ yd black cord; 7" by 12" piece of lining fabric; snap closure.

TOTAL WARP ENDS 104.

WARP LENGTH

1¼ yd (allows take-up, shrinkage, and 27" loom waste).

E.P.I. 15. **WIDTH IN REED** 7". **P.P.I.** 30.

TAKE-UP and SHRINKAGE 8% in width and 5% in length.

WEAVING

Use a firm beat to cover the warp. Weave 1" with Marigold, and then weave the stripe section as follows: *2 picks metallic, 3 picks Marigold, 1 pick black Gioiello for pick-up loops, 3 picks Marigold, 1 pick black Gioiello for pick-up loops, 3 picks Marigold, 1 pick black Gioiello for pick-up loops, 3 picks Marigold, 2 picks metallic. Repeat from * with Peacock and then with Elderberry. Repeat all of the above (not including the 1" Marigold) twice more and end with 1" Elderberry.

For each row of loops: Cut a length of black a little over five times the width of the fabric. Fold in half to double it and insert it in the shed. (Since I found it easiest to work right to

left, I used a new length of black for each row and left the tails hanging out on the left side.) With the shed open, begin picking up loops after each group of 4 warp threads on the knitting needle starting 1" in from the right-hand selvedge. Pick up 4 loops, do not pull loops for 20 warp threads, pick up 4 loops, and so on until there are 5 sets of loops. Weave three rows of loops for each stripe as noted in the treadling sequence. When the next color stripe is woven, pick up loops in the groups of 20 warp threads between the last group of loops to make a checkerboard pattern of loops.

The back of the bag is woven in solid plain weave following the same stripe sequence including the black rows but without picking up any loops.

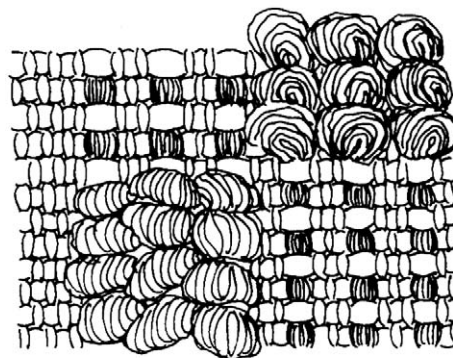
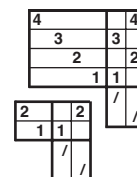
FINISHING

Secure the ends and handwash in warm water and mild soap. Lay flat to dry and press on the wrong side.

ASSEMBLY

Trim off weft tails. Mark and machine zigzag between back and front sections (these are cut apart to turn horizontal). Fold down top hems ½" and sew hems by hand. With right sides together, machine stitch sides and bottom using ½" seam allowances. Cut and sew the lining fabric slightly smaller than the bag and handstitch to the top of the bag just below the top edge. For a closure, sew a snap to the center of the top edge on the inside of the bag. Handsew the cord to the side edges of the bag.

DRAFT



Although making weft loops by hand takes some time, the result is unique and special. After you are accustomed to the process, try some variations: making longer loops, using loops of different sizes, and trying different yarns and fibers.



Originally published in *Handwoven*®, September/October 1992, pp. 66, 92
© Interweave Press LLC. Not to be reprinted. All rights reserved.

PLAITED-TWILL PURSE ORGANIZER AND CARD CASE

SHARON ALDERMAN

PROJECT NOTES

Twelve treadles are required for this design (or a table loom). For many very similar designs that use ten treadles with the same threading, see Carol Strickler, ed., *A Weaver's Book of 8-Shaft Patterns*, pages 100–107.

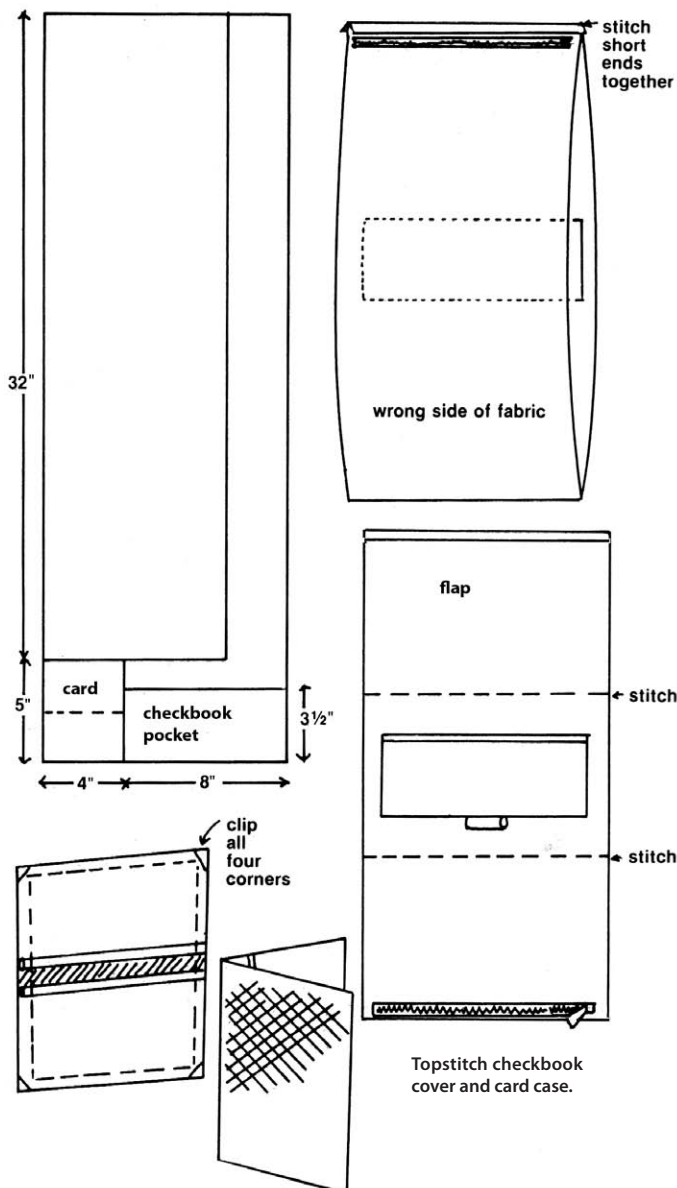
FABRIC DESCRIPTION

Plaited twill.

FINISHED DIMENSIONS

Fabric 12½" by 37¼" to make a purse (with a checkbook pocket) about 8¼" by 10" and a small card case 2" by 4".

LAYOUT AND ASSEMBLY



DRAFT

repeat																							
												7	8	8	8	8	8	8	7	7	7	8	
												6	6	7	7	6	6	6	6	6	6	6	6
												5	5	5	5	5	5	5	5	5	5	5	5
												4	4	4	4	4	4	4	4	4	4	4	4
												3	3	3	3	3	3	3	3	3	3	3	3
												2	2	2	2	2	2	2	2	2	2	2	2
												1	1	1	1	1	1	1	1	1	1	1	1

WARP and WEFT

20/2 wool at 5,600 yd/lb, 908 yd Raspberry, 500 yd Admiral.

YARN SOURCES

20/2 JaggerSpun wool is available from most weaving retailers.

NOTIONS

9" zipper; real or simulated raspberry calfskin or suede; matching sewing thread; 1 yd fusible interfacing.

TOTAL WARP ENDS 454.

WARP LENGTH

2 yd (allows take-up, shrinkage, and 27" loom waste).

E.P.I 32 (3-3-2 in a 12-dent reed).

WIDTH IN REED 14½". **P.P.I** 30.

TAKE-UP and SHRINKAGE 10% in width and length.

WEAVING and FINISHING

Weave following the draft for 41½". Remove from loom; machine zigzag raw edges. Wash by hand, very warm water, mild detergent; rinse well. Blot out water; press dry.

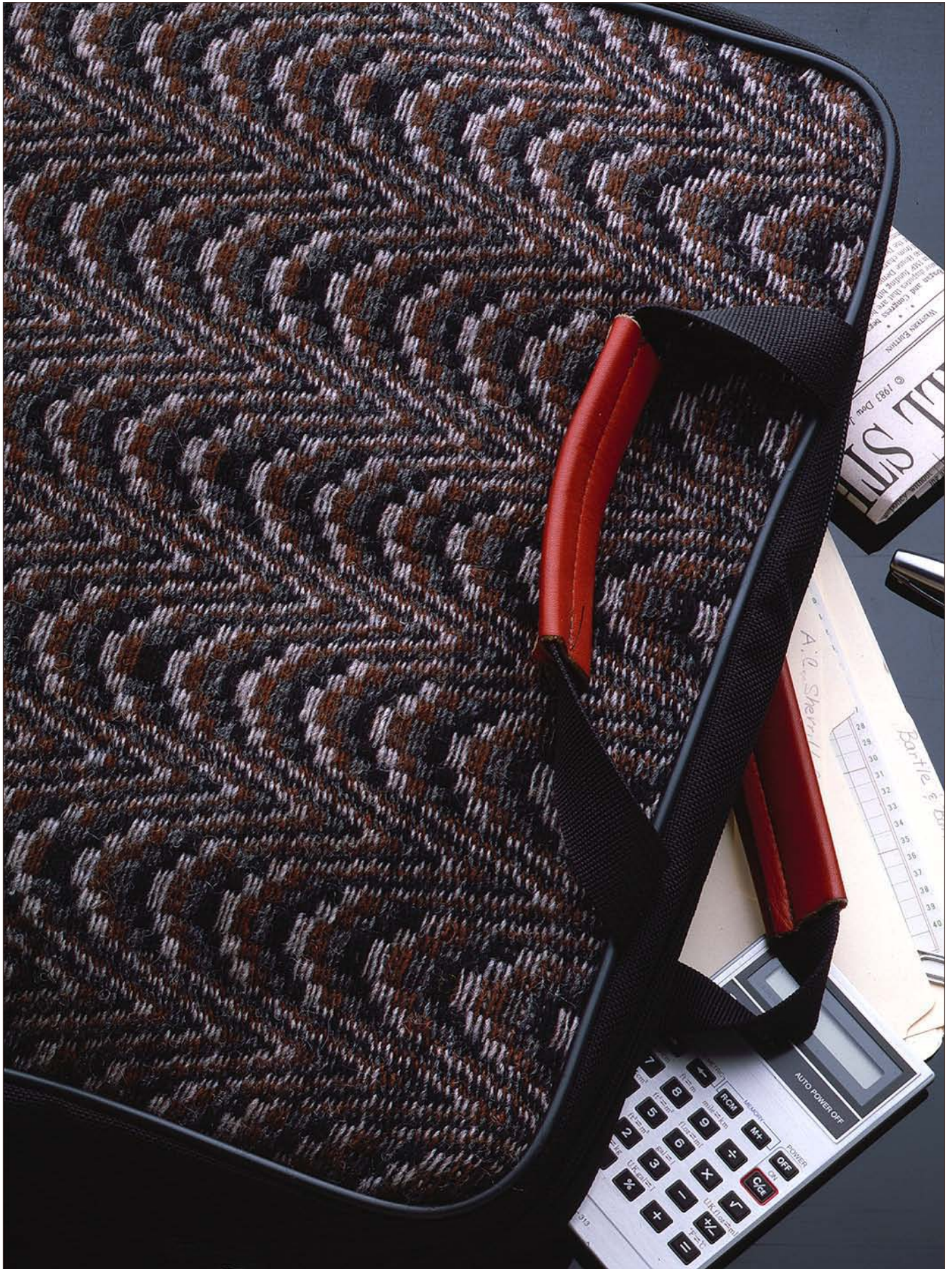
SEWING AND ASSEMBLY

Card Case Cut a piece 4" by 5" as in the pattern layout. Cut two pieces of leather each 2½" by 4". Make a narrow hem in one long edge of each piece. Right sides together, sew a ¼" seam to join as in layout. Clip corners; turn; steam-press.

Purse Organizer Cut purse piece 9" by 32". Fuse interfacing to one side, excluding seam allowance. Cut checkbook pocket 3½" by 8"; fuse interfacing to wrong side; bind one long edge with leather. Turn raw edges under ¼"; baste and press. Make a small loop of leather for a pen holder and baste to bottom of checkbook pocket. Baste checkbook pocket on right side as in pattern layout and stitch. Machine baste short edges of purse together and insert zipper. Right sides together, sew side seams. Open zipper and turn right side out. Divide purse in thirds and stitch through to form fold lines. Bind flap edge with leather.



Originally published in *Handwoven*®, January/February 1984, pp. 49, 94–95
© Interweave Press LLC. Not to be reprinted. All rights reserved.



Originally published in *Handwoven*®, January/February 1984, pp. 49, 91
© Interweave Press LLC. Not to be reprinted. All rights reserved.

EASY-SEW STRIPED TOTE

MARGARET GAYNES

PROJECT NOTES

This cheerful striped tote is a good project for a narrow loom; the straps are woven on a separate warp. Note that the selvages show in the no-waste construction of the bag.

FABRIC DESCRIPTION Plain weave.

FINISHED DIMENSIONS

Bag fabric 8" x 92" for a bag 15½" x 12" x 6". Strap fabric 1¼" x 66" for two bag handles 20" long.

WARP and WEFT

Warp: 3-ply mercerized cotton (Biwa) at 830 yd/lb, 305 yd fuchsia (Fuchsia #9679; also used for the strap warp and weft), 90 yd turquoise (Turquoise #9881), 75 yd yellow (Yellow #5533), 95 yd bright green (Palm #3522). Weft: 5/2 pearl cotton at 2, 100 yd/lb: 445 yd hot pink (UKI Fuchsia #3).

YARN SOURCES

3-ply Biwa cotton by Crystal Palace is available from Cotton Clouds, UKI pearl cottons from most weaving retailers.

NOTIONS Fuchsia sewing thread.

TOTAL WARP ENDS 122.

WARP LENGTH FOR TOTE

3¾ yd, including take-up, shrinkage, and 27" loom waste.

E.P.I. 12. **WIDTH IN REED** 10¼". **P.P.I.** 14.

TAKE-UP and SHRINKAGE 21% in width, 10% in length.

WEAVING

Weave the tote fabric for 102". For the straps, wind a warp of 18 ends fuchsia, 3 yd long; thread for plain weave at 12 ends per inch (1½" wide in the reed); weave 2 yd with Fuchsia.

FINISHING

Machine staystitch raw edges. Machine wash, warm water. Tumble dry; remove while still slightly damp; press until dry.

ASSEMBLY

Press after each step. For the bag, cut two 24" lengths and machine staystitch raw edges. Slightly overlap the selvages and stitch through both layers to make a single piece 16" x 24" (a). Identify the side with the better selvedge and place this side down. Fold up crosswise and for each side seam overlap the selvages along the edge and machine stitch through both selvages as far as possible; finish sewing to the fold by hand (b). Fold up the point of each triangle about 3¼", starting at the end

WARP COLOR ORDER

	2x					
24	6	6	6	6	bright green	
20	2	6	2		yellow	
24	6		6		turquoise	
54	2	8	4	4	10	fuchsia
122						

DRAFT

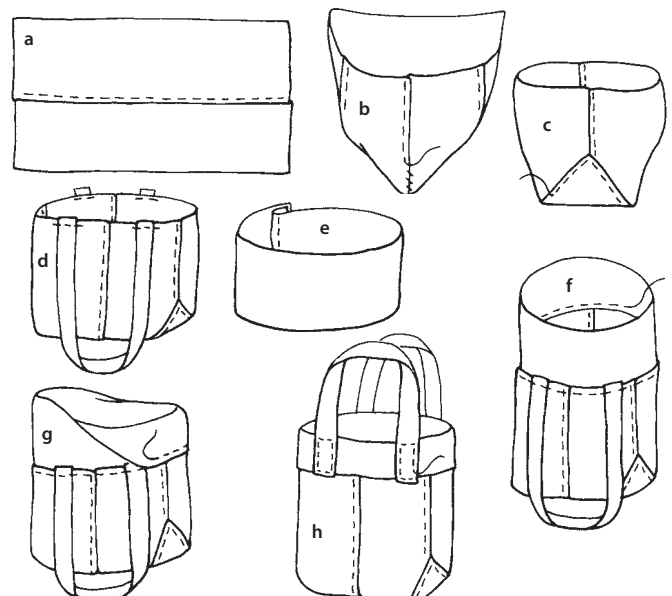
2	2	4	4
1	1	3	3
/	/	2	2
/	/	1	1
/	/	/	/

of the turquoise stripe and matching the stripes at right angles. Stitch along the two sides of this triangle through all layers (c).

Cut strap fabric into two 30" strips and staystitch ends. With right sides together, place the ends of each strap at the top of the bag, centered over the wide fuchsia stripes on either side of the center seam. The straps will hang down toward the bottom of the bag. Stitch across the ends of the straps ½" from the edge (d).

Cut a length of bag fabric 1½" longer than the circumference of the bag; staystitch edges. Turn under one end of the band ¾" and press. Overlap the fold and the other end to form a circular band the circumference of the bag; stitch through all layers close to the fold (e). Fold the band lengthwise with the right side out; make the fold slightly off center with the face side slightly wider so that the fuchsia stripe at its fold is the same width as the fuchsia stripe at the selvedge. Press and then unfold the band. Place the narrower portion inside the bag, overlapping the band with the reverse side of the bag ½" and centering the band's seam beneath one of the straps. Machine stitch around the circumference close to the band's selvedge (f).

Turn the band to the outside of the bag along the pressed fold line. Stitch through all layers along the band's selvedge, stitching over the straps (g). Fold the straps up over the band and stitch the straps to the bag close to the selvages, top of the bag, and bottom of the band (h).





Originally published in *Handwoven*®, March/April 1994, pp. 17, 79–80
© Interweave Press LLC. Not to be reprinted. All rights reserved.

EASY-IKAT STRIPED TOTE

MARGARET GAYNES

PROJECT NOTES

Easy ikat stripes enliven this tote. The dyeing process is as easy as tying knots in the warp as you remove it from the warping board! The ikat bands and the solid blue warp stripes were dyed using Cushing dyes; the other yarns were preshrunk as warp chains to avoid tension differences. You could dye the weft yarn to match the ikat bands, but I picked a commercially dyed yarn in a slightly lighter shade.

I wove the strap on my floor loom, but you could use an inkle loom if you prefer. (At 40 e.p.i, I first tried a 10-dent reed with 4/dent but found that the weft did not beat in properly at the selvages. I switched to a 12-dent reed sleyed 3-4-3, and the selvages were fine. The only trick to weaving such a narrow fabric on a floor loom is to make sure that the first few turns of the fabric line up evenly on the cloth beam.

FABRIC DESCRIPTION Warp-faced plain weave.

FINISHED DIMENSIONS

One tote 19" by 17" (high) with 25" straps.

WARP and WEFT

Warp: 5/2 pearl cotton at 2,100 yd/lb: 688 yd natural (for dyeing), 546 yd bright green, 222 yd yellow, 240 yd red-violet.
Weft: 10/2 pearl cotton at 4,200 yd/lb: 480 yd blue-green.

YARN SOURCES

Pearl cotton is available from most weaving retailers.

NOTIONS

1 packet of Cushing's Perfection Dye, Peacock; green sewing thread; jeans/denim-weight sewing machine needle.

TOTAL WARP ENDS 612 (tote), 60 (strap).

WARP LENGTH

Tote: 2¼ yd (allows take-up, shrinkage, and 27" loom waste).
Strap: 5 yd (allows take-up, shrinkage, and 27" loom waste).

E.P.I. 30 (tote), 40 (strap) sleyed 3-4-3 in a 12-dent reed.

P.P.I. 14 (tote), 19 (strap).

WIDTH IN REED 20⅝" (tote), 1½" (strap).

WARP PREPARATION

Wind three warp chains of natural cotton with 60 ends in each. Make an overhand knot in each warp chain every 12" as you take them off the warping board (snug but not so tight that you can't untie them after dyeing). Make two more knots

WARP COLOR ORDERS

STRAP

16	16	peacock
12	6 6	yellow
12	6 6	red-violet
20	10 10	bright green
60		

TOTE

180	60	60	ikat
90	15 15	15 15	peacock
72	12 12	12 12	yellow
72	12 12	12 12	red-violet
198	30	69	30 bright green
612			

DRAFT

4		4
3		3
2		2
1		1
2	2	/ /
1	1	/ /

between the original knots so there is about 1½" between knots. Wind additional chains of the natural cotton: 90 ends for the tote and 16 ends for the strap. Wind the warp chains of the commercially dyed yarns. Dye the natural warp chains Peacock following the instructions on the dye package. Preshrink the other warps by immersing them in hot water with a little dishwashing detergent added as a wetting agent.

TAKE-UP and SHRINKAGE

5% in width and 11% in length (tote); 0% in width and 14% in length (strap).

WEAVING

Weave the tote fabric until it measures 41" on the loom. Weave the strap fabric until it measures 138" on the loom.

FINISHING

Machine staystitch the ends of the fabric. Machine wash in warm water on cotton cycle using detergent. Machine dry, removing when slightly damp; press.

ASSEMBLY

Use ½" seam allowances throughout. Cut a 118" length for the strap and mark the center. Stitch the two ends of the strap together and press the seam open. Cut a 36" length of fabric for the tote and machine staystitch the ends of the fabric.

On the right side of the bag, center the strap over the wide green stripes with the seam of the strap centered in the middle of the bottom of the bag. Starting and ending 1" from the top of the bag, edgestitch the strap to the bag. With right sides together, stitch the side edges of the bag and press open.

To miter the corners, fold a triangle at each inside corner with the side seam on top. Stitch across the base of the triangle 2½" from its point. Press toward the bottom of the bag. Turn the top edge of the bag under ½" twice; press. Stitch twice around the hem at the upper and lower folds, sewing over the straps each time.



Originally published in *Handwoven*®, March/April 1998, pp. 63, 84
© Interweave Press LLC. Not to be reprinted. All rights reserved.

RAG-WOVEN LOOM-SHAPED DIAPER BAG

EVE BOSTIC

PROJECT NOTES

Using fabric strips as weft with a multicolored warp makes a colorful, washable diaper bag, roomy enough for all the essentials. Pockets on one side hold bottles while the large pocket on the inside helps keep everything else organized.

FABRIC DESCRIPTION Plain weave.

FINISHED DIMENSIONS

One bag 15" by 11" (high) by 5" (deep).

WARP and WEFT

Warp: 8/2 cotton at 3,575 yd/lb, 464 yd Gold #33, 450 yd Lavender #38, 512 yd Fuchsia; #25, 450 yd Kelly #7. (Amounts of Fuchsia and Gold include weft used for hems.)

Weft: Cloth strips 1" wide cut from 4 yd striped cotton-polyester fabric for the outside of the bag (160 yd of strips) and 1¾ yd print cotton-polyester fabric for the inner bag (80 yd of strips).

YARN SOURCES

Aurora Earth cotton is available from Cotton Clouds in 4,470 yd/20 oz tubes.

NOTIONS Matching sewing thread, 2 buttons.

TOTAL WARP ENDS 240 doubled ends.

WARP LENGTH

3¾ yd (allows take-up, shrinkage, and 27" loom waste).

E.P.I. 12 doubled ends per inch. **WIDTH IN REED** 20".

WARP COLOR ORDER

A doubled strand of each color is used in the following order: Gold, Lavender, Kelly, Fuchsia.

P.P.I. 6 in body, 15 in hem sections.

TAKE-UP and SHRINKAGE:

7½% in width and 20% in length.

WEAVING

For outer bag, weave a 1" hem with a single strand of Fuchsia, then with the striped fabric cloth strips weave 28". To make slits for the bottle pockets, divide the warp into five sections of 4½", 4½", 2", 4½", 4½". Weave the second and fourth sections 20" long and end with a 1" hem with a single strand of Fuchsia. At the same time, weave the first, third, and fifth sections 2½" long and end with a 1" hem of Fuchsia (the warp threads in these sections will not be weaving as you complete the second and fourth sections). Remove from loom.

To weave the inner pocket and handles, remove 2½" on each side of the warp. On the remaining 15" wide warp, weave the inner pocket starting with a 1" hem with a single strand of Gold 8/2 cotton, 27" of print fabric cloth strips, 1" hem with Gold. For the handles, weave 4 sections (two will be sewn end to end for each handle) as follows: ¾" hem with Fuchsia, 2" with striped fabric cloth strips, ¾" hem with Fuchsia.

FINISHING

Machine stitch along the edge of each hem section. Machine wash and dry fabric.

ASSEMBLY

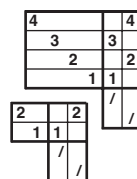
Form the bottle pockets by folding the second and fourth sections almost in half so that the hem bands on all five sections line up. Sew the pocket edges and slits securely with a doubled strand of warp yarn. Hem each end. For all hems (except handles), fold under ¼" twice and machine stitch (hem will be a band of warp yarn ¼" wide).

For the inner pocket: Hem each end. Fold up 13" to make the pocket; fold down a 2" flap; sew two buttons on the front of the pocket; make two loops and sew them securely to the flap.

For the outer bag: Fold the bag in half with right sides together. Lay the completed inner pocket on top of the bag with the upper edges and the edges of one side aligned. Form a pleat at the bottom of the outer bag as shown below. Stitch together the weft loops of the selvages of both outer bag and inner pocket (except flap) by hand using 4 strands of warp yarn. Align and stitch the other side the same way (the outer bag will be bigger than the inner pocket). Turn outer bag right side out.

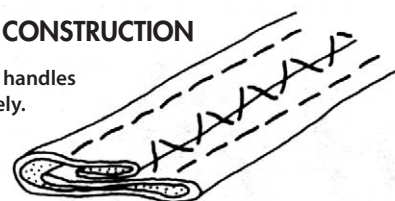
For handles, very securely sew two lengths end to end by hand with a doubled strand of warp yarn. Fold handle in thirds lengthwise, turning under ¼" of hem and machine stitching securely through all thicknesses. Attach the handles just to the outside of the bottle pockets by machine stitching.

DRAFT

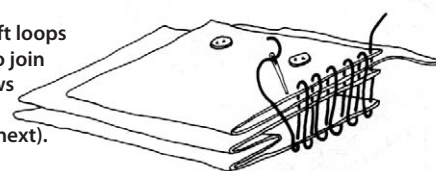


BAG CONSTRUCTION

Stitch handles securely.



Stitch together the weft loops of the stacked edges to join all the layers (this shows one side being done; the other side is done next).





Originally published in *Handwoven*®, March/April 1987, pp. 46-47; Instruction Supplement, pp. 6-7
© Interweave Press LLC. Not to be reprinted. All rights reserved.

SUN AND STARS DOUBLEWEAVE POUCH

ALISON IRWIN

PROJECT NOTES

This bag was designed with the seaside in mind—the blues of the ocean and sky, a sprinkling of sand, a little sun and stars (or starfish). The size is perfect for holding baubles and trinkets and other small items.

Doubleweave pick-up can be done in many ways. In this version, I modified the denting to place a dark warp thread on either side of the two light ones to give a slight jaggedness to the edges that make the stars look like little jack-be-nimbles leaping over the candlestick flames.

FABRIC DESCRIPTION Doubleweave pick-up.

FINISHED DIMENSIONS

Fabric 4 $\frac{3}{4}$ " by 15 $\frac{3}{4}$ " for one small bag 4 $\frac{7}{8}$ " by 6 $\frac{7}{8}$ "; the cord extends 18 $\frac{1}{2}$ " above top of bag.

WARP and WEFT

10/2 pearl cotton by UKI at 4,200 yd/lb: 84 yd blue-green (Peacock #103) for warp, 145 yd dark blue (Soldier Blue #21) for warp and cord, 220 yd champagne (Champagne #46) for warp and weft, 105 yd royal blue (Royal #16) for weft and cord. A few yards of 50/3 mercerized cotton sewing threads (Mettler Silk-Like Cotton) in gold #767 and blue-violet #833.

YARN SOURCES

UKI pearl cottons are available from most weaving retailers and Mettler sewing thread from fabric stores.

NOTIONS

Two knitting needles 8" long (see Doubleweave Pick-up). I used a pick-up stick instead of knitting needles. The advantage to using knitting needles is that the first needle can be left in place for 2 picks and then used as a guide for picking up the background threads with the second needle.

TOTAL WARP ENDS 220.

WARP LENGTH 1 $\frac{1}{2}$ yd (allows take-up, shrinkage, and 31" loom waste). For each additional bag on the same warp, add $\frac{1}{2}$ yd.

E.P.I. 40 (20 per layer).

WIDTH IN REED 5 $\frac{1}{2}$ ".

P.P.I. 40 (20 per layer).

DOUBLEWEAVE PICK-UP

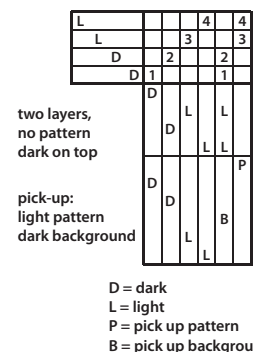
1. For these instructions, the threading is 1, 2, 3, 4 with the pattern color (light) on shafts 3 and 4; the background color (dark) on shafts 1 and 2. For two layers, the warp is sleyed twice as close as for plain weave.

2. Use two thin knitting needles or wires as pick-up sticks.

3. Keep the pick-up stick close to the reed and always insert the shuttle into the shed directly below it.

4. Beat all picks with the pick-up stick in place, except as described in the last step.

5. Lower the shafts from each step before starting the next step.



FOR EACH ROW OF GRAPHED DESIGN:

Raise shafts 3 & 4: Pick up a pair of pattern ends for each square in the graphed design row. Close the shed. Push stick against reed.

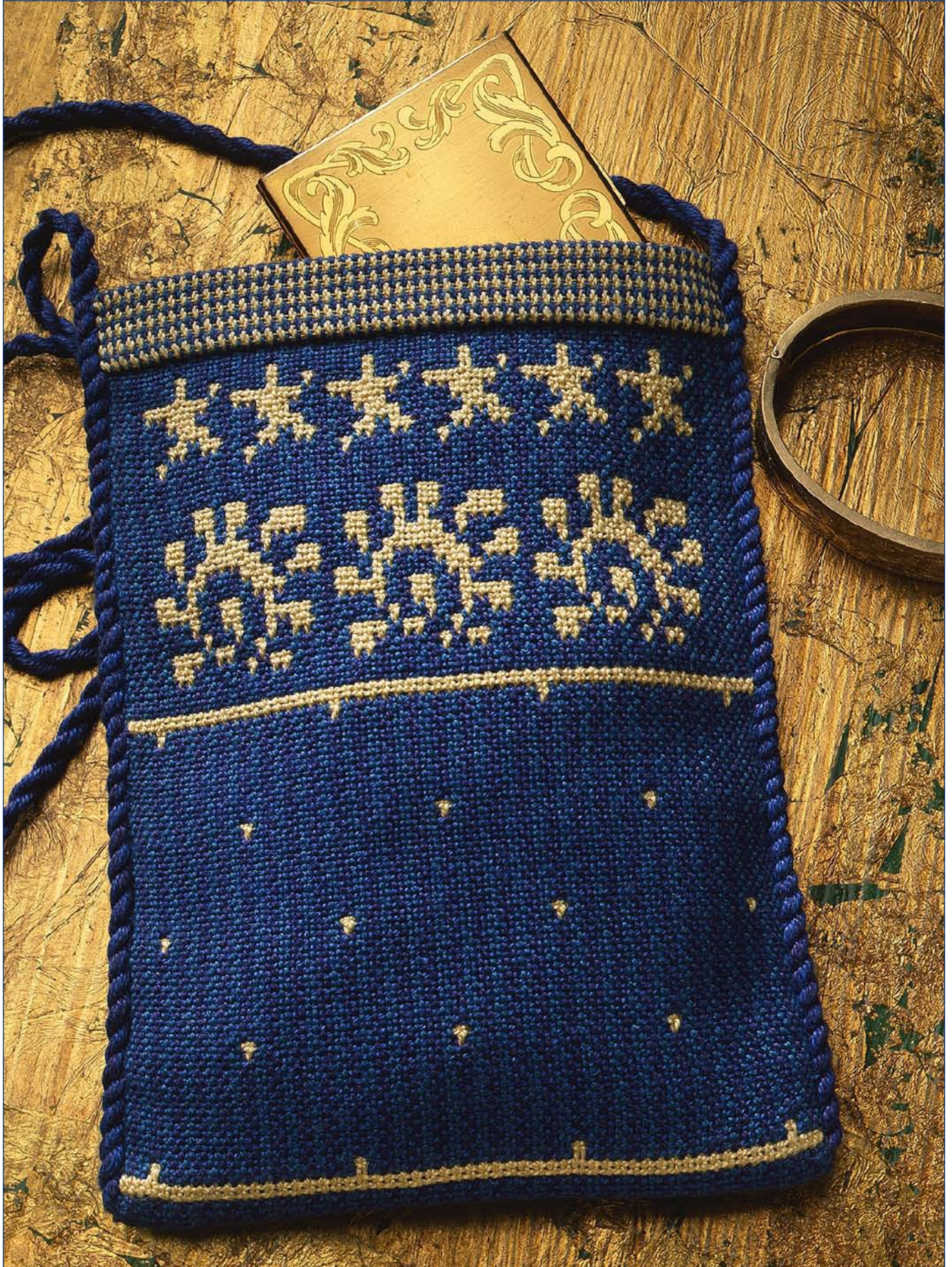
Raise shaft 1: Weave a pick of background color in shed formed by shaft 1 and the ends on the pick-up stick. Beat, close the shed. Push stick against reed.

Raise shaft 2: Weave a second pick of background color. Beat, close the shed. Push stick against reed.

Raise shafts 1 & 2: Using the ends on the first pick-up stick as a guide, pick up the background ends. Remove the first pick-up stick, close the shed, push the second stick against the reed.

Raise shaft 3: Weave a pick of pattern color. Beat, close the shed. Push stick against reed.

Raise shaft 4: Weave a second pick of the pattern color. Beat, close the shed. This completes one repeat corresponding to one row of squares on the graphed design. If the next graphed row of the design is identical to this row, leave the pick-up stick in place and use it as a guide to insert the pick-up stick that starts the next row. Otherwise, remove the second stick and follow the next row in the design to place the first stick.



Originally published in *Handwoven*®, November/December 1993, pp. 44, 82-83
© Interweave Press LLC. Not to be reprinted. All rights reserved.

WARP COLOR ORDER

54	1 1 1			dark blue
56	1	1	1	blue-green
110	2 2 2			champagne
220				

DRAFT

27x						4	4
C	C	C			3	2	3
C	C	C			2	2	3
B	D	B			1		1
B	D	B					
plain weave				/	/	/	
2/2 twill				G		G	G
				V	V		V
two layers, light on top				R		R	R
				R	C		R
two layers, dark on top				R		R	R
				R	C	C	C
pattern with pick-up				R			P
				R			
				C			B
				C			C

C = champagne
 B = blue-green
 D = dark blue
 R = royal blue
 G = gold sewing thread
 V = blue-violet sewing thread

P = pick up pattern
 B = pick up background
 — = in one dent

TAKE-UP and SHRINKAGE 14% in width and length.

WEAVING

Start with 2 picks of plain weave in gold sewing thread and hemstitch including 4 ends in each stitch. Then weave eleven repeats of the 2/2 twill treadling using gold and blue-violet sewing thread. For the doubleweave portion of the bag, follow the design graph from bottom to top. Each square represents 4 warp ends and 4 picks (one treadling repeat). Once you reach the top of the graph (bottom of the pouch), work your way back down the design for the second half of the bag. Then weave eleven repeats of 2/2 twill. Finish with 2 picks of plain weave in blue-violet thread and hemstitch.

FINISHING

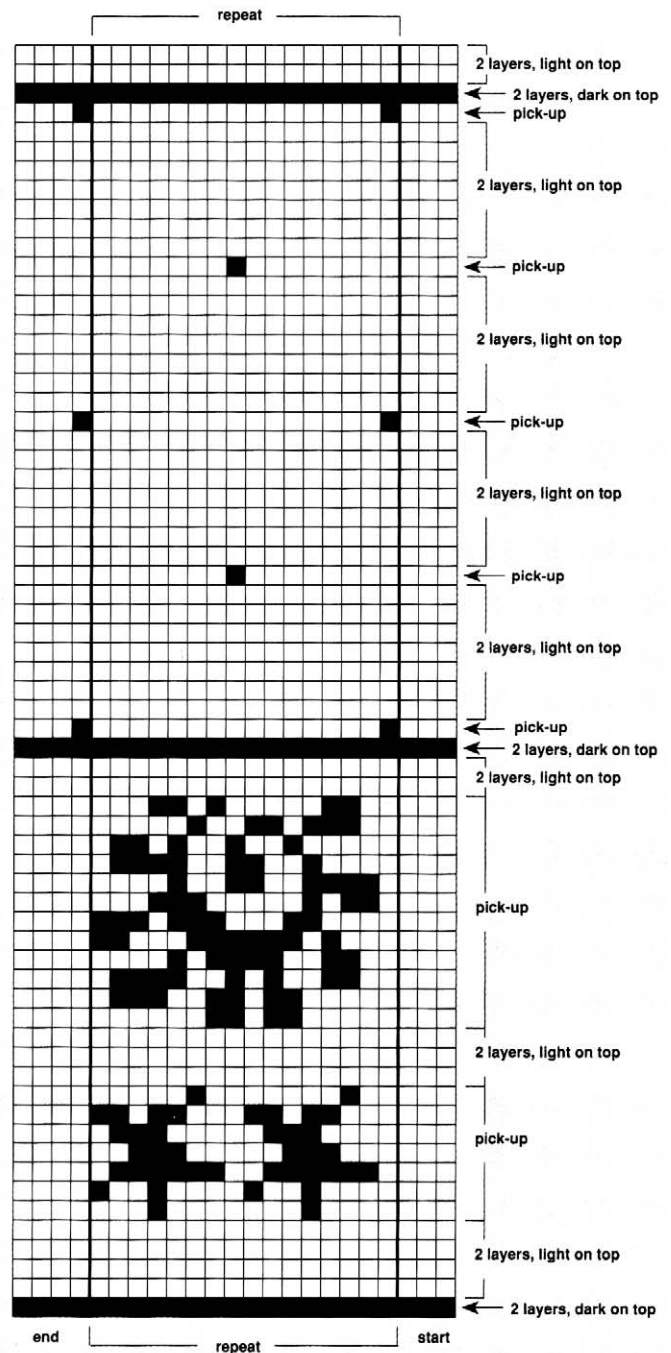
Cut the fabric from the loom and correct any weaving errors. Handwash in warm water with mild dishwashing liquid. Rinse well in clear water of the same temperature. Pat the wet fabric flat between two towels to remove excess moisture; air-dry. Iron while still damp until dry.

ASSEMBLY AND SEWING

Fold the fabric in half at the bottom of the pouch with the light-colored side out. Butt the light-colored selvages and stitch each side seam with a length of the champagne yarn by hand using a figure-eight stitch. Turn the pouch with the blue side out and stitch each side seam with a length of royal blue yarn in the same way, except for the short space between the two lines at the bottom of the bag that will form a channel for the cord. At the top of the bag, fold the twill band to the outside. Turn under the raw edge to cover the line and make a 5/8" wide band. Stitch in place.

For cord, cut 12 strands each of dark blue and royal blue, 160" long. Fold the strands in half into two groups of 24 strands. Tightly twist each group in a clockwise direction and

DESIGN GRAPH



Work from bottom to top and then reverse.
 One square equals 4 warp ends and 4 weft picks.

let them twist around each other in the opposite direction. Wrap each end with thread to hold the twist. Thread the cord through the channel at the bottom of the bag, overlap the ends of the cord by 4", and lash securely at each end. Gently pull this doubled section into the channel. Stitch the cord to the sides of the bag. Press lightly.

PURSE IN WEFT-FACED BLOCK WEAVE (page 25)

NANCY ARTHUR HOSKINS

The fruits of autumn—cranberries, Concord grapes, pomegranates, and Delicious apples—inspired the colors for this small purse, but the pattern and palette could be adapted for any season and the fiber changed to an elegant silk and metallic for a dressy version, a cozy wool to accent a winter coat, or pastel cottons and rayons for spring and summer.

The fabric is a weft-faced pattern weave done on a simple rosepath threading using a technique called boundweave on opposites. In this technique, which can be done on many different twill-based threadings using a standard twill tie-up, the treadling order pairs up the two sheds that are opposites of one another: The shed formed by activating shafts 1 and 2 is the opposite of 3 and 4; the shed formed by activating shafts 2 and 3 is the opposite of 1 and 4.

These two pairs of opposites are easy to remember if you use the twill block letter designations: A = 1-2 vs C = 3-4; B = 2-3 vs D = 1-4.

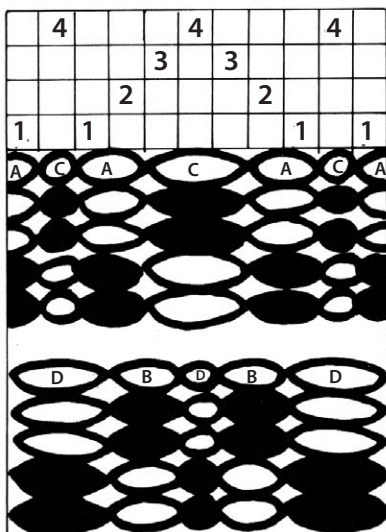
A pick in Block A is always followed by a pick in Block C; a pick in Block B is always followed by a pick in Block D; see the draft above right.

In a weft-faced weave, these 2 picks compress into one row of weaving and are called “one pass.”

DESIGNING WITH BOUNDWEAVE

The design options on a rosepath threading are: 1) Both picks of a pass (A-C, for example) can be the same color; 2) A can be white and C black; 3) A can be black and C white; 4) B can be white and D black; or 5) B can be black and D white; see Boundweave Blocks below.

BOUNDWEAVE BLOCKS



DRAFT

				repeat					
				1	2	3	4	5	6
4	4	4	4	4	4	4	4	4	4
3	3	3	3	3	3	3	3	3	3
2	2	2	2	2	2	2	2	2	2
1	1	1	1	1	1	1	1	1	1
plain weave									
				A			C		
				B			D		

Pattern appears in the blocks whose shafts are down: 1-2 for A, 3-4 for C, 2-3 for B, 1-4 for D.

What I call a “polychrome” draft can be used to design boundweave pieces; see below right. The vertical columns represent either the A-C sheds or the B-D sheds. Each horizontal row of squares represents a set of passes.

A “set” of passes can be two, three, four, or more passes, depending on how many picks it takes to build up the equivalent of a row in the graph: One set of passes should equal the height of one square on the draft. Otherwise, the woven pattern will be either shortened or elongated. This project takes 6 passes (12 picks) to “square” the design. Repeated passes of a given order of color will build columns of color.

BIBLIOGRAPHY, WEFT-FACED WEAVES

- Barrett, Clotilde. *Boundweave*. Boulder, Colorado: Colorado Fiber Center, 1982.
- Black, Mary E. *The Key to Weaving*. New York: Macmillan, 1980.
- Bress, Helene. *The Weaving Book*. New York: Scribner, 1981, pp. 26–29.
- Cason, Marjorie, and Adele Cahlander. *The Art of Bolivian Highland Weaving*. New York: Watson-Guptill, 1976.
- Collingwood, Peter. *The Techniques of Rug Weaving*. New York: Watson-Guptill, 1968, Chapters 4–9.
- Davenport, Betty. “Color Effects in Weft-Faced Plain Weave,” *Handwoven*, Nov/Dec 1985, pp. 13–14.
- Ed. “Weft-Faced Weaving of Block Weaves,” *Handwoven*, Nov/Dec 1987, p. 59.
- Ligon, Linda, ed. *A Rug Weaver’s Source Book*. Loveland, Colorado: Interweave, 1984.
- Tod, Osma Gallinger, and Josephine Couch Del Deo. *Designing and Making Handwoven Rugs*. New York: Dover, 1957, Chapters 15–17.

POLYCHROME DRAFT

2	1	4	1	2	3	4	3	2	1	4	1	2	Light	Dark
■	■	■	■	■	■	■	■	■	■	■	■	■	B	D
■	■	■	■	■	■	■	■	■	■	■	■	■	A	C
■	■	■	■	■	■	■	■	■	■	■	■	■	D	B
■	■	■	■	■	■	■	■	■	■	■	■	■	A	C
■	■	■	■	■	■	■	■	■	■	■	■	■	B	D
■	■	■	■	■	■	■	■	■	■	■	■	■	A	C
■	■	■	■	■	■	■	■	■	■	■	■	■	D	B
■	■	■	■	■	■	■	■	■	■	■	■	■	A	C
■	■	■	■	■	■	■	■	■	■	■	■	■	B	D



Originally published in *Handwoven*®, September/October 1989, pp. 48–50, 80–81
© Interweave Press LLC. Not to be reprinted. All rights reserved.

FABRIC DESCRIPTION

Boundweave.

FINISHED DIMENSIONS One bag
8½" by 6".

WARP and WEFT

Warp: 12/6 cotton rug warp at 1,430 yd/lb, 146 yd gray.

Weft: 5/2 pearl cotton at 2,100 yd/lb, 210 yd red, 105 yd pink, 150 yd red-purple, 55 yd blue-purple.

YARN SOURCES

12/6 cotton and 5/2 pearl cotton are available from most weaving retailers.

NOTIONS

10" by 20" lining fabric to match one of the weft colors, sewing thread to match lining.

TOTAL WARP ENDS

97 (95 for pattern and 2 extra ends for a doubled selvedge on each side).

WARP LENGTH

1½ yd (allows take-up, shrinkage, and 27" loom waste).

E.P.I. 10.

WIDTH IN REED 9½".

P.P.I. About 84.

TAKE-UP and SHRINKAGE: 11% in width, 6% in length.

WEAVING

To cover the warp and prevent the weaving from drawing in, place the weft on an angle in the shed, close the shed, and beat. To handle the selvages, only the A color should show at the selvages on an A-C pass. Colors A and C should go in opposite directions so that the wefts interlock. Do not wrap C color around the A weft threads at the selvedge. On the B-D pass, only the D color should show at the selvedge. Wrap the D color around the selvedge thread on each pass, and on every other pass, wrap twice. Experiment a bit to see how this works.

To change weft colors, wrap both the new and old weft tails around the group of warp threads at or near the selvedge that are or will be the same color as that weft. Tuck tails to the back to be trimmed later.

Measure the picks per inch with the beater against the fell of the cloth to compress the weft picks. Determine the number of picks you will need to square the designs (different weft yarns will require different numbers). With these yarns, and this draft, I wove 12 picks per design square (6 of A and 6 of B, for example).

Begin and end the weaving with ½" plain weave and a hemstitched edge. Weave Design 1 for the flap. It should measure 4" (2" to the middle of the design). For the fold at the top of the purse, weave 1" on the B-D sheds in red. For the back of the purse, weave Design 2, Design 3, Design 2. The back should measure 6". For the bottom fold, weave 1" on B-D. Weave the front to match the back, comparing measurements and counting the picks.

FINISHING

Trim the weft tails and stitch in the tails of the hemstitching. Steam press the fabric firmly.

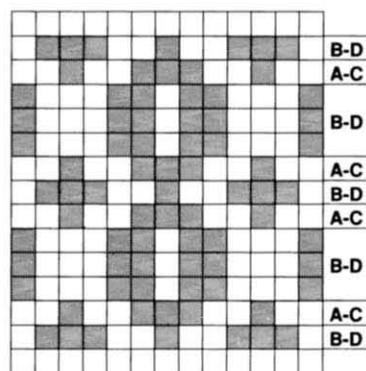
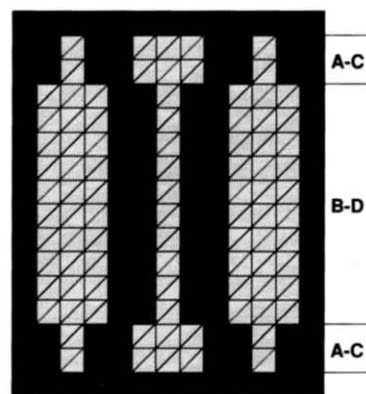
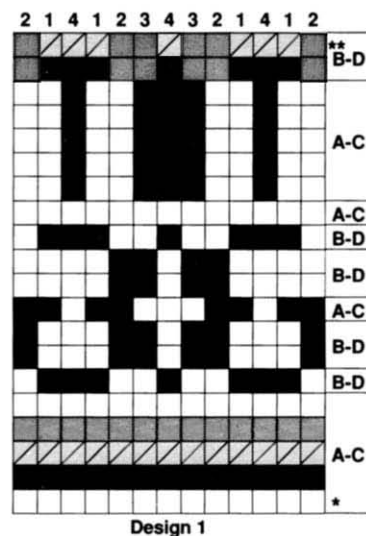
ASSEMBLY

Fold under ¼" of the plain weave at the edge of the flap. Fold under the full width of plain weave at the edge of the front of the purse. Match the patterns on the sides of the purse and sew the side seams by hand, butting the edges. Press. Cut a lining the size of the purse plus ½" on each edge. Stitch the side seams of the lining, slip the lining inside the purse, wrong side still out, fold under the raw edges, and stitch by hand to the handwoven fabric. Complete the purse by sewing a 48" long decorative braid to the sides (or use other strap). I finger-crocheted a double chain of 3 strands of red-purple pearl cotton.

PURSE DRAFT

				11x		1	2	3	4	5	6
4	4	4	4	4	4	4	4	4	4	4	4
3	3	3	3	3	3	3	3	3	3	3	3
2	2	2	2	2	2	2	2	2	2	2	2
1	1	1	1	1	1	1	1	1	1	1	1
plain weave											
Pattern appears in the blocks whose shafts are down: 1-2 for A, 3-4 for C 2-3 for B, 1-4 for D.											
				A			C				
				B			D				

PURSE DESIGNS



= blue-purple
 = red
 = pink
 = red-purple

HOLD-ALL PURSE IN SUMMER AND WINTER

DEE JONES

PROJECT NOTES

In addition to shoulder straps and a small inside pocket, this versatile purse has a long zipper closure and magnetic fasteners to bring the two ends together. The body is interfaced and the bag is lined. Woven in summer and winter, each pattern piece uses a tabby yarn of a different color and a different treadling. The straps are woven on the same warp in plain weave.

By understanding the relationship between the pattern pieces, you can alter the depth and angle of the sides or create bags of different sizes (see cutting diagram, page 29). The long edge of the side panel equals the length of the top piece. The length of the body equals the total length of the three lower edges of each side panel. The short edge of the body equals the width of the top piece. If you weave a bag on a wider warp, you can lay the straps out next to the side pieces to minimize waste and speed up weaving, but in that case you will probably need to weave the side pieces in plain weave to be sure that the fabric is also sturdy enough for the straps.

FABRIC DESCRIPTION

Summer and winter and plain weave.

FINISHED DIMENSIONS

Fabric 10" x 80" for purse body and 10½" x 32" for the straps to make a purse 11" x 16½" x 6" deep with 31" straps.

WARP and WEFT

Warp and tabby weft: 5/2 pearl cotton at 2,100 yd/lb, 660 yd black (Black #116), 135 yd turquoise (Light Turk #2), 145 yd purple (Purple #27), 144 yd natural (Natural #75). Rayon-blend novelty at 900 yd/lb (Galaxy by Stacy Charles): 255 yd brown (color #6). Pattern weft: 4/4 cotton, Sugar 'n Cream, at 840 yd/lb: 265 yd black (#00002).

YARN SOURCES

UK1 pearl cottons are from most weaving retailers, Galaxy and Sugar 'n Cream from knitting stores.

NOTIONS

Matching sewing thread, 2 magnetic fasteners, 16" zipper, ¾ yd lining fabric, 1 yd heavyweight fusible interfacing.

TOTAL WARP ENDS 192.

WARP LENGTH

4½ yd (allows take-up, shrinkage, and 30" loom waste).

E.P.I. 16.

WIDTH IN REED 12".

P.P.I. 16 for summer and winter (8 pattern, 8 tabby), 12 for plain weave.

TAKE-UP and SHRINKAGE

17% in width and length in summer and winter areas, 13% in width and length in plain-weave areas.

WEAVING

Follow the treadling using the yarns indicated in the draft to weave 31" for the body, 34" for the sides, and 20" for the top pieces. At each end of each treadling section, weave ½" plain weave for seam allowances and to separate pieces, using the tabby weft of the adjacent section. Finish with 35" plain weave using black 5/2 pearl cotton as weft for the straps.

FINISHING

Machine wash on gentle cycle. Hang to dry and press while still slightly damp.

ASSEMBLY

Sew with ½" seam allowances throughout. Cut out the pattern pieces and serge or staystitch the raw edges. Cut lining pieces to match the body and sides and another piece 7" x 11" for a pocket front.

Cut a piece of interfacing and fuse it to the pocket piece. With right sides together, fold the pocket in half and sew the two sides. Turn right side out, fold in the bottom edges, and press. Center the pocket front on the body lining 3" from one end and stitch in place.

With right sides together, pin A-B-C-D of a side lining to the long side of the body lining and sew, rounding the B and C corners a little. Repeat for the other side. Serge or machine zigzag the raw edges to provide a little extra support for the finished bag.

Cut out and fuse interfacing to the body piece. Stitch the body to the sides in the same way as the lining. Cut 2" wide strips of interfacing for the straps, center them along the warp wise stripes, and fuse. Fold the serged side of the strap ½" past the center, fold the selvedge over it, and machine stitch through all the layers. Topstitch a matching seam on the other edge of the strap.

With right sides together, pin 1 strap to each end of the body, positioning each end of the strap ½" from the side/body seam. Stitch in place.



Originally published in *Handwoven*®, May/June 1996, pp. 58, 87–88
© Interweave Press LLC. Not to be reprinted. All rights reserved.

TIPS FOR PLANNING, HEMSTITCHING, AND FRINGING

TAKE-UP AND SHRINKAGE

Weft take-up and shrinkage. As you weave, extra weft length (beyond the width of the warp in the reed) must be placed in the shed to allow for weft take-up (in *Handwoven* projects, this amount is included in required weft yardage). The fabric then draws in as the weft bends over and under the warp threads, so that the width of the woven cloth is narrower than the width of the warp in the reed. The cloth narrows further after it is removed from the loom, and shrinkage narrows it even more if it is washed. To calculate the percentage of weft take-up and shrinkage, divide the finished width by the width of the warp in the reed.

Warp take-up and shrinkage. As you weave, the warp bends over and under the weft threads. Fabric length is therefore less than the length of the warp threads that produce it (*Handwoven* projects give the number of inches allowed for this take-up under Warp Order and Length). When you release tension and remove the fabric from the loom, the fabric takes up in the warp direction. If you wash the fabric, shrinkage further decreases its length. To calculate the percentage of warp take-up and shrinkage, divide the finished fabric length by the woven length (measured under tension on the loom) plus the inches given for warp take-up.

To calculate how long to weave a fabric for a specific finished length, use the percentage derived by dividing the finished length listed in the project by the woven length measured under tension on the loom (for this percentage, do not include the inches allowed for take-up in the warp yarn).

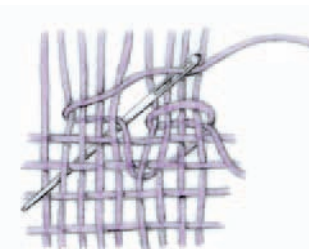
TWISTING (OR PLYING) THE FRINGE

Divide the number of threads for each fringe into two groups. Twist each group clockwise until it kinks. Bring both groups together and allow them to twist around each other counter-clockwise (or twist them together in that direction). Secure the ends with an overhand knot. (Use the same method to make a plied cord by attaching one end to a stationary object.)



SIMPLE HEMSTITCHING

Weave several picks of plain weave, ending with the shuttle on the right side if you are right-handed, left side if you are left-handed. Measure a length of weft three times the warp width and cut, leaving the measured length as a tail. Thread the tail into a blunt tapestry needle.



Take the needle under a selected group of ends above the fell and bring it up and back to the starting point, encircling the group. Pass the needle under the same group of ends, bringing it out through the weaving two (or more) weft threads below the fell. Repeat for each group of ends across the fell. Needleweave the tail into the selvedge and trim. (See * below.)

DOUBLE (ITALIAN) HEMSTITCHING

Weave several picks plain weave, ending with the shuttle on the right side if right-handed, left side if left-handed. Measure a length of weft four times the warp width and cut, leaving the measured length as a tail. Thread the tail into a blunt tapestry needle.

Take the needle under a selected group of warp ends above the fell and bring the needle back to encircle the ends. Next, pass the needle under the same ends but come up two or more weft rows down from the fell. Then bring the needle back around the same group of ends below the fell. Then begin again, encircling the next group of ends. (See * below.)

**For both methods: To hemstitch the first end of a piece, weave a header, weave four or five picks of plain weave (or of the basic weave structure used in the piece), and hemstitch over the top two or three weft rows. Weave the piece and then hemstitch the other end over the last two or three weft rows. Remove the fabric from the loom and discard the header and weft threads below the first hemstitching.*

