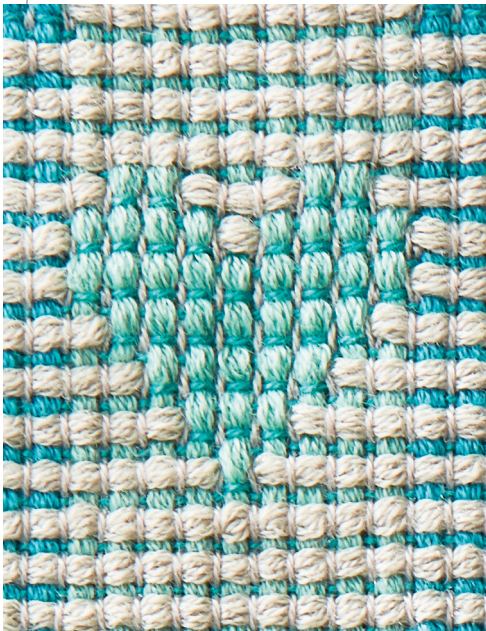
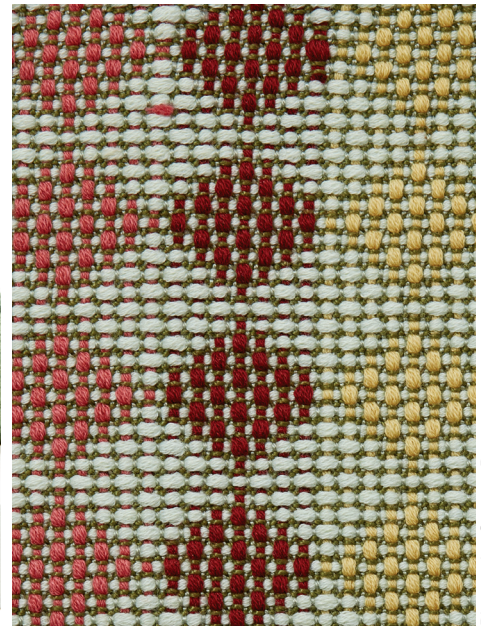


HANDWOVEN *PRESENTS*

WEAVING WITH COTTON FLEECE AND COTTON FINE

Yarn Lab + Sweetheart Baby Blanket





Photos by George Boe

Both Cotton Fleece (DK weight) and Cotton Fine (fingering weight) cotton/wool blend yarns are easy to handle while warping, dressing the loom, and weaving. Explore them both with this two-part collection. First, dive into a series of yarn samples woven by Deanna Deeds using these yarns in the Yarn Lab article. Then, weave a baby blanket using the 8-shaft Sweetheart Baby Blanket pattern designed by Deanna. The cute design combines Cotton Fleece, Cotton Fine, and 20/2 cotton in diversified plain weave and is the perfect blanket for a special little one in your life.

Contents

2 Yarn Lab: Cotton Fleece & Cotton Fine

Deanna Deeds, excerpted from
Handwoven Sept/Oct 2017

4 Sweetheart Baby Blanket

Deanna Deeds, excerpted from
Handwoven Jan/Feb 2019

Follow & Share!

Join us on Facebook @Handwoven and on Instagram @longthreadmedia, and be sure to share your projects using #handwovenmagazine.

Cotton Fleece & Cotton Fine

By Deanna Deeds

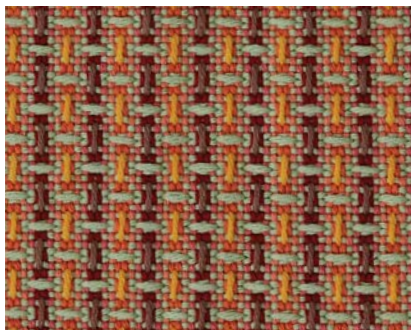


Brown Sheep Company's Cotton Fleece and Cotton Fine combine the coolness of cotton with just enough wool to make the yarn loftier and springier than an entirely cotton yarn. Both yarns are knitting weights; Cotton Fleece is DK weight and Cotton Fine is fingering weight, and they both come in dozens of luscious colors.

COTTON FLEECE

THE YARN: Brown Sheep Cotton Fleece; 215 yd/3.5 oz skein, 980 yd/lb; 80% cotton/20% merino wool.

Cotton Fleece is put up in a pull skein. It is a three-step cabled yarn meaning that it is four plies, each made up of three plies that, in turn, are made up of two plies. It is a soft, lofty yarn. Because of the softness, I took extra care while threading to prevent my hook from splitting the plies.



Cotton Fleece in point twill

Point Twill

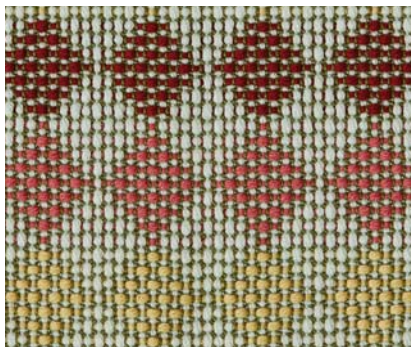
SAMPLE YARNS: Brown Sheep Cotton Fleece (warp colors Chocolate Diamond, Salmon Berry Red, Tropical Coral, October Leaf, Wild Orange, Gold Dust; weft color Peridot).

For my first sample, I arranged several colors in the warp, grading from dark to light in a 6-shaft point-twill threading, and used a tie-up that contrasts plain-weave areas with warp and weft floats. The sett of 12 epi was

wide enough to allow the yarn to move and created a light blanket-weight fabric.

Sett: 12 epi.

Dimensions: *Width on loom:* 13.3"; *width off the loom:* 12"; *width after wet-finishing:* 11.5"; *draw-in and shrinkage:* 13.5%. **Woven length:** 7.75"; *length after wet-finishing:* 6.5"; *take-up and shrinkage:* 16.1%.



Cotton Fleece and 10/2 cotton in diversified plain weave

Diversified Plain Weave

SAMPLE YARNS: Thin warp and weft: 10/2 cotton. Thick warp and weft: Brown Sheep Cotton Fleece (warp color Spryte; weft colors Salmon Berry Red, Tropical Coral, Buttercream).

This sample highlights Cotton Fleece as the thick warp and weft in a thick-and-thin weave. I used a single color of the Cotton Fleece as the thick pattern warp, and rotated through three pattern weft colors. The soft, thick yarn really "bloomed" between the thin

tie-down yarns, accentuating the pebbled look characteristic of diversified plain weave. At 24 epi, this is a substantial fabric that would work well as a table runner.

Sett: 24 epi (2 thin and 1 thick in an 8-dent reed).

Dimensions: *Width on loom:* 10"; *width off the loom:* 9.25"; *width after wet-finishing:* 9"; *draw-in and shrinkage:* 10%. **Woven length:** 8.25"; *length after wet-finishing:* 7.25"; *take-up and shrinkage:* 12.1%.



Cotton Fleece and 10/2 cotton in honeycomb

Honeycomb

SAMPLE YARNS: Warp and cell weft: 10/2 cotton. Outline weft: Brown Sheep Cotton Fleece (Tropical Coral, October Leaf, Wild Orange, Gold Dust).

Here the Cotton Fleece is showing off as the cell outlines in honeycomb weave. I have long dreamed of making a coverlet in honeycomb; I may have found the right outline yarn for that project.

Sett: 24 epi.

Dimensions: *Width on loom:* 8.1"; *width off the loom:* 7.625"; *width after wet-finishing:* 7.5"; *draw-in and shrinkage:* 7.4%. **Woven length:** 8.5"; *length after wet-finishing:* 7.5"; *take-up and shrinkage:* 11.8%.

COTTON FINE

THE YARN: Brown Sheep Cotton Fine; 2,000 yd/lb; 80% cotton/20% merino wool.

The finer version of this cotton/wool blend is available in half-pound cones or 1.75-ounce pull skeins. Like the heavier-weight yarn, it is a three-tiered cabled yarn. It feels a little firmer and is less lofty than the heavier Cotton Fleece.

Plain Weave

SAMPLE YARNS: Brown Sheep Cotton Fine (Tropical Coral, October Leaf, Buttercream, Peridot, Spryte, Jungle Green).

I tried several setts with this yarn in plain weave, and 12 epi is probably the most open sett I would use. At 12 epi, it would work well for a scarf. At 16 epi, the fabric was stable and firm, but I couldn't quite beat it square. A sett of 15 epi would probably be better for a firm fabric.

Sett: 12 epi.

Dimensions: *Width on loom:* 10"; *width off the loom:* 8.75"; *width after wet-finishing:* 8.5"; *draw-in and shrinkage:* 15%. *Woven length:* 9"; *length after wet-finishing:* 8.375"; *take-up and shrinkage:* 6.9%.



Cotton Fine in plain-weave plaid

Twill Plaid

SAMPLE YARNS: Brown Sheep Cotton Fine (Tropical Coral, October Leaf, Buttercream, Peridot, Spryte, Jungle Green).

I played with different proportions of several colors to come up with a symmetrical plaid. The yarn was very happy in a 2/2 twill at this setting and was easy to beat exactly square. The resulting fabric is a good weight for clothing.

Sett: 20 epi.

Dimensions: *Width on loom:* 8"; *width off the loom:* 7.5"; *width after wet-finishing:* 7.25"; *draw-in and shrinkage:* 9.4%. *Woven length:* 8"; *length after wet-finishing:* 7.25"; *take-up and shrinkage:* 9.4%.



Cotton Fine in twill plaid

Striped Twill Combination

SAMPLE YARNS: Brown Sheep Cotton Fine (Tropical Coral, October Leaf, Buttercream, Peridot, Spryte, Jungle Green).

Having threaded the previous sample in four blocks of 4-end straight draw on a 16-shaft loom, I changed my tie-up and treadling so that I could simultaneously weave plain weave, 2 x 2 basketweave, point twill, and ribbed weave. I'm really pleased with the resulting striped fabric with delicate patterning.

I could see this fabric used for clothing, perhaps a skirt. The cloth has a firm hand and makes an interesting rustling sound when touched.

Sett: 20 epi.

Dimensions: *Width on loom:* 8"; *width off the loom:* 7.25"; *width after wet-finishing:* 7"; *draw-in and shrinkage:* 12.5%. *Woven length:* 6.5"; *length after wet-finishing:* 6"; *take-up and shrinkage:* 7.7%.



Cotton Fine in striped twill combination

FINAL THOUGHTS

Both Cotton Fleece and Cotton Fine are easy to handle while warping, threading the loom, and weaving. I made the samples on a shaft loom, but both are adaptable to rigid-heddle weaving. Fabrics

woven using Cotton Fleece would make good blankets. Cotton Fine is a suitable weight for clothing and household textiles. Both wash well due to the mixture of cotton and wool. Although I

handwashed the samples for this article, I also threw swatches of each yarn into the washer and dryer. They fluffed up nicely and there was further shrinkage of 2% to 5%. Going beyond using

traditional weaving yarns to using cabled yarns was a bit of a stretch for me, but both yarns performed beautifully. I see these yarns in my weaving future.

Sweetheart Baby Blanket

DEANNA DEEDS

IT SEEMS THERE IS AN ENDLESS STREAM OF BABIES THESE DAYS: if not your own, there are nieces, nephews, grandchildren, and children or grandchildren of friends or extended family. For all of these babies, a handwoven baby blanket is a wonderful way to welcome them.

Diversified plain weave is a sturdy fabric that works well for items such as baby blankets—there are no floats for tiny fingers to catch on, and it can withstand heavy use. Diversified plain weave uses two sizes of thread in both warp and weft, and that allows for patterning such as this blanket's hearts and blocks motif.

For the thick warp and weft, I chose Brown Sheep Company Cotton Fleece, a blend of 80% cotton/20% wool that can be machine washed, making the blanket that much easier to care for. For the thin thread, I chose 20/2 cotton from Brassard et Fils. The blanket is crib-sized, but it can easily be woven in a smaller size as a stroller blanket, for example, by reducing the number of threading and treadling repeats.

- 1** Wind a warp of 1,103 ends $2\frac{1}{2}$ yd long, following the warp color order, Figure 1. Warp the loom using your preferred method, following the draft, Figure 2.
- 2** Centering for a weaving width of 46", sley 3 per dent in an 8-dent reed (2 ends of 20/2 cotton plus 1 end of Cotton Fleece per dent), ending with 2 ends of 20/2 cotton in the last dent.
- 3** Wind a bobbin with each of the weft yarns. Spread the warp with scrap yarn.
- 4** Start by weaving the 2" hem using 20/2 cotton only, then begin the pattern treadling with both weft yarns according to the draft. **Note:** This is a skeleton tie-up requiring the use of both feet on some picks. Use your left foot for treadles 1 and 2 and your right foot for treadles 3 through 10. You may also use the downloadable WIF (<https://handwovenmagazine.com/library/55987938>) with a standard tie-up that uses 11 treadles.
- 5** End with 2" hem using only the 20/2 cotton. Weave several picks of scrap yarn as a weft protector.
- 6** Cut the fabric from the loom. Zigzag the ends and trim. Wet-finish in the washing machine in warm water. Line dry. Iron. Press the hems under twice and machine stitch. 

STRUCTURE

Diversified plain weave.

EQUIPMENT

8-shaft loom, 46" weaving width; 8-dent reed; 2 shuttles; 2 bobbins.

YARNS

Warp: Cotton Fleece (80% cotton/20% merino wool; 980 yd/lb; Brown Sheep Company), #767 Hawaiian Sky, 333 yd; #442 Marbled Mint and #865 October Leaf, 203 yd each; #343 Sunflower Gold, 180 yd. 20/2 cotton (8,400 yd/lb; Brassard et Fils), #297 Silver, 1,840 yd.
Weft: Cotton Fleece, #382 Spring Sage, 463 yd. 20/2 cotton, #401 Turquoise, 1,055 yd.

WARP LENGTH

1,103 ends $2\frac{1}{2}$ yd long (allows 4" for take-up, $34\frac{1}{2}$ " for loom waste).

SETTS

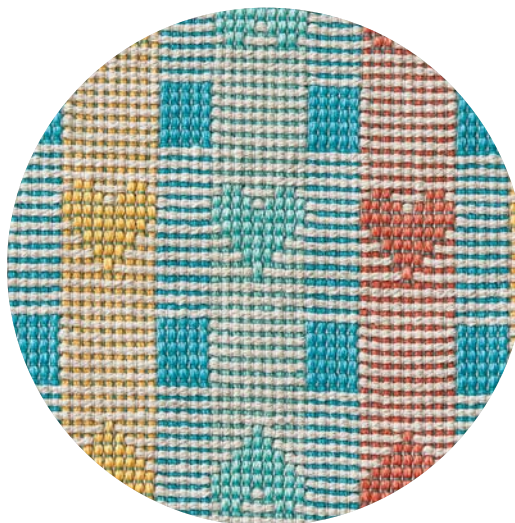
Warp: 24 epi (3/dent in an 8-dent reed).
Weft: 21 ppi in body; 23 ppi in hems.

DIMENSIONS

Width in the reed: 46".

Woven length: (measured under tension on the loom) $51\frac{1}{2}$ ".

Finished size: (after washing and hemming) 42" x 47".



DEANNA DEEDS weaves in Southern California with a studio cat to help with yarn inventory. She is active in several local guilds and volunteers at the city senior center's weaving room helping people learn to weave.



2. Draft

The diagram shows a 10x10 grid. The top 7 rows are grouped into a 3x26x4x structure. The bottom 3 rows are grouped into a 1x10x10x structure. The grid contains several green circles and numbers. The top 7 rows have green circles at (row, col) positions: (1, 2), (1, 10), (2, 4), (2, 12), (3, 6), (3, 14), (4, 8), (4, 16), (5, 10), (5, 18), (6, 12), (6, 20), (7, 14), (7, 22), (7, 24). The bottom 3 rows have green circles at (8, 2), (8, 10), (8, 18), (9, 2), (9, 10), (9, 18), (9, 24), (10, 2), (10, 10), (10, 18), (10, 24). Numbers are placed in the grid: 3x in the top left, 26x in the top middle, 4x in the top right, 1 2 3 4 5 6 7 8 9 10 in the top right, 8 8 8 8 8 8 8 8 in the top right, 7 7 7 7 7 7 7 7 in the top right, 6 6 6 6 6 6 6 6 in the top right, 5 5 5 5 5 5 5 5 in the top right, 4 4 in the top right, 2 3 in the top right, 1 1 in the top right.

Heddle count

Shaft 8	26
Shaft 7	52
Shaft 6	52
Shaft 5	52
Shaft 4	52
Shaft 3	133
Shaft 2	368
Shaft 1	368
Total	1,103

- Cotton Fleece—see warp color order
- Brassard 20/2 #297 Silver
- Cotton Fleece #382 Spring Sage
- Brassard 20/2 #401 Turquoise

1. Warp color order

[illegible]

A 10x10 grid of 100 squares, each containing a number from 1 to 100. The grid is divided into four 5x5 quadrants. The top-left quadrant contains numbers 1-25, the top-right 26-50, the bottom-left 51-75, and the bottom-right 76-100. The numbers are arranged in a pattern that suggests a specific sequence or rule.