



Rosepath Bricks Fingertip Towels

MALYNDA ALLEN

STRUCTURE

Twill.

EQUIPMENT

4-shaft loom, 15" weaving width; 12-dent reed; 1 shuttle.

YARNS

Warp: 8/2 cotton (3,360 yd/lb; Georgia Yarn Company), Natural, 1,526 yd.

Weft: 18/3 linen (2,961 yd/lb; Gist Yarn), Mint, Arctic, Peacock, Lavender, and Sea Glass, 259 yd each.

WARP LENGTH

339 ends 4½ yd long (includes floating selvages; allows 12" for take-up, 37" for loom waste and sampling).

Note: To weave additional towels, add 25" to the warp length per towel.

SETTS

Warp: 24 epi (2/dent in a 12-dent reed).

Weft: 26 ppi.

DIMENSIONS

Width in the reed: 14¾".

Woven length:

(measured under tension on the loom) 113", or about 22½" per towel.

Finished size: (after wet-finishing and hemming) five towels, about 13" × 18" each.

Just before Christmas, my husband and I picked up a four-shaft, 22-inch Leclerc Artisan loom from about 1970 that had been rescued from an estate sale. He helped me restore it, and I eagerly looked forward to weaving on it.

I wanted to weave something resembling a damask or satin but on four shafts. I perused the pages of Marguerite Porter Davison's *Handweaver's Pattern Book* and found this twill design. After reducing the repeats, adjusting the tie-up, and adding a border, I decided it would work well for my "new" loom's maiden voyage.

I wove two sets of five towels on the same warp. In the set that are featured in *Handwoven* March/April 2023, the diamond twill pattern resembles a trellis framing windows. In these towels, with a rosepath treadling, I see roses climbing bricks.

I chose soft cotton for the warp and colorful, slightly slubby linen for the weft, giving the towels a nice hand. Whether you choose to reserve these for guests or use them in the kitchen, they will add a touch of luxury to your home.

1 Wind a warp of 337 ends 4½ yd long. Wind 2 additional ends to be used as floating selvages and set them aside. Warp the loom using your preferred method following the draft in Figure 1. Centering for a weaving width of 14¾", sley 2 ends per dent in a 12-dent reed. Sley the floating selvages through empty dents on each side of the warp and weight them over the back beam.

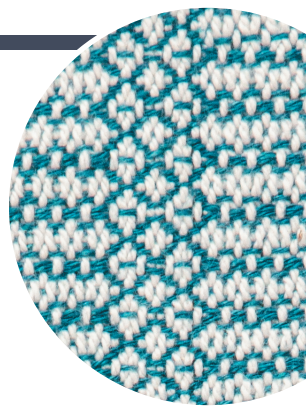
2 Wind a bobbin with the first weft color. Spread the warp with scrap yarn.

Notes

- 8/2 cotton can be substituted for the linen. Because cotton draws in a bit more than linen, your towels will be slightly narrower.
- The warp for two towels will make three napkins—and yes, Malynnda did weave this. It works! (Warp length of 50" yields three napkins, about 15" each under tension on the loom.) Weaving only 40 repeats will give you nice square napkins. Wet-finished and hemmed, the napkins measure about 13" × 13".

3 Weave the hem following the draft, Figure 1, weaving the double picks in the same shed to mark your fold lines for the hem. Weave the border.

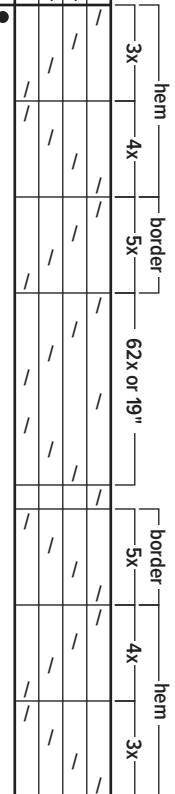
4 Continue weaving following the draft for 62 repeats or about 19". Weave the balance and border. Weave the hem as shown in the draft. Your towel should measure about 22½" under tension on the loom.




Shaft 4	85
Shaft 3	126
Shaft 2	84
Shaft 1	42
Total	337

	$5x$			$2x$			$6x$			$7x$			$2x$			$5x$			1	2	3	4
	4		4		4		4		4		4		4		4		4		4	4		
	3			3			3		3		3		3		3		3		3		3	
	2			2		2		2		2		2		2		2		2		2	2	
		1			1	1					1	1		1					1	1		

● floating selvedge ●



7 Remove the towels from the loom.

10 Turn under hems along doubled picks, enclosing the raw edge. Press. Sew hems in place by hand or machine. 

*A mother of nine, MALYNDA ALLEN
enjoys welcoming guests into her home.*