



# Big Wrap Beach Blanket

CYNTHIA NEWMAN  
WITH KATZY LUHRING



## STRUCTURE

Twill.

## EQUIPMENT

4-shaft loom, 47" weaving width; 12-dent reed; 2 shuttles. **Note:** This is a 4-shaft project but requires 8 treadles, 2 more than are on most 4-shaft looms. A skeleton tie-up is provided for weaving on a 4-shaft, 6-treadle loom using 2 treadles at a time.

## YARNS

**Warp:** 10/2 unmercerized cotton (4,200 yd/lb; American Maid; Lunatic Fringe Yarns), Natural White, 3,324 yd.

**Weft:** 10/2 unmercerized cotton, Natural White, 1,831 yd; Dark Green, 824 yd.

## OTHER SUPPLIES

Baking or washing soda.

## WARP LENGTH

1,108 ends 3 yd long (includes doubled floating selvages; allows 9" for take-up, 21" for loom waste; loom waste includes fringe).

## SETTS

**Warp:** 24 epi (2/dent in a 12-dent reed).

**Weft:** 24 ppi.

## DIMENSIONS

**Width in the reed:** 46<sup>2</sup>/<sub>12</sub>"

**Woven length:** (measured under tension on the loom) 78".

**Finished size:** (after wet-finishing) 39" × 73" plus 2½" fringe.

*After a long winter, my thoughts* turn to summer and visiting the beach along the Washington coast. When the breeze picks up, it is nice to wrap up in a lightweight blanket, which can serve equally well as a picnic cloth or a beach towel. For this project, I collaborated with Katzy Luhring of Lunatic Fringe Yarns; my part of the project was designing the blanket, and hers was the weaving. We had many adventures along the way, texting back and forth about our progress. We chose American Maid naturally colored cotton yarns for their color palette and soft, cozy hand; we used changes in weft color to create the stripes and a 1/3 twill to add surface texture. We finished the fringe with a series of overhand knots and then split the groups of ends to make smaller twisted fringe bundles. To shift the subtle green to a beautiful brighter green, we added baking soda to the wash water during wet-finishing.

Popular and well-known striped twill Turkish towels were my initial inspiration. While drawing designs in my sketchbook, I found one I wanted to explore and transferred the design to a ¼-scale drawing. I quickly realized I wanted to see the design in full scale, so I taped sheets of paper together to create a full-scale 40-by-70-inch model that I laid out on the floor, sketching stripes on it with a black marker. I started by sketching stripes that appealed to me, thinking about how they related to one another, wanting a variety of large and small stripes, and balancing the positive and negative areas of the green and white. I considered proportion guidelines but didn't strictly adhere to them, opting for what felt balanced to my eye.

**1** Wind a warp of 1,104 ends 3 yd long with Natural White. Wind 4 additional ends to be used as doubled floating selvages and set

### *Naturally colored American Maid yarns*

The yarns for this shawl were grown and spun in the United States. The Dark Green naturally colored weft will become darker when washed and will continue to change throughout the life of the cloth.

them aside. Warp the loom using your preferred method following the draft in Figure 1. Centering for a weaving width of 46<sup>2</sup>/<sub>12</sub>", sley 2 per dent in a 12-dent reed. Sley the doubled floating selvages through empty dents on each side of the warp and weight them over the back beam.

**2** Wind bobbins with each of the weft colors. Leaving at least 8" of unwoven warp for fringe, spread the warp with scrap yarn.

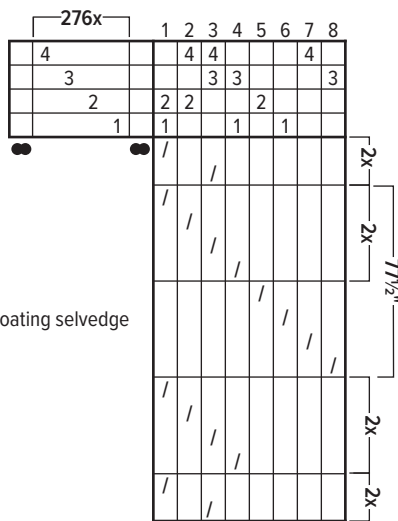
**3** Leaving a tail 3¾ yd long for hemstitching, weave 4 picks of basketweave, then begin the pattern treadling using either the regular tie-up or the skeleton tie-up, depending on your loom. Use the tail to hemstitch in groups of 6 warp ends. Include the double floating selvages in the first and last groups.

**HEDDLE COUNT**

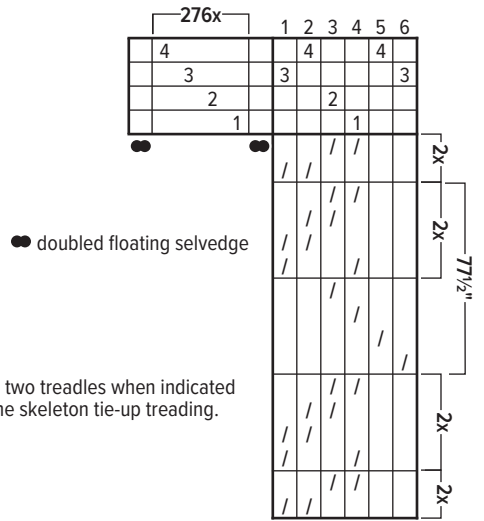
Shaft 4	276
Shaft 3	276
Shaft 2	276
Shaft 1	276
<b>Total</b>	<b>1104</b>

**1. DRAFTS**

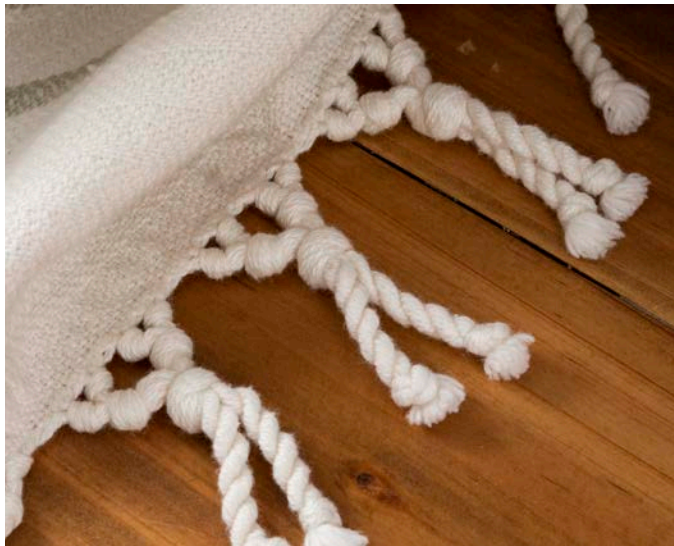
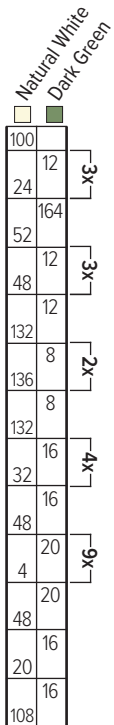
Regular tie-up on 8 treadles



Skeleton tie-up



**2. WEFT COLOR ORDER**



**4** Continue weaving following the draft in Figure 1 and the weft color order in Figure 2 for about 78". End with 4 picks of basketweave and hemstitch as you did at the beginning.

**5** Leaving at least 8" for fringe on both ends, cut the fabric from the loom. Trim the fringe ends to 8". Prepare fringe by gathering groups of 6 ends from the hemstitching.

The first and last groups will include the double floating selvedges, so they will contain 8 ends. Begin by taking 2 groups of 6 at a time and tie an overhand knot below the hemstitching (12 ends). Next, take 2 groups of the 12 and knot them together (24 ends). Then take 2 groups of the 24 ends and knot them together (48 ends). Split the group of 48 into 2 groups of 24 and twist the fringe in each group,

knotting the ends (see photo of fringe detail).

**6** Wet-finish by hand in hot water with 2 tablespoons of baking or washing soda and a mild detergent, gently agitating and then leaving the blanket to soak for 20 minutes. Line-dry. ⇄

**RESOURCES**

Keasbey, Doramay. *Pattern Techniques for Handweavers*. Eugene, OR: self-published, 2005.

van der Hoogt, Madelyn. *The Complete Book of Drafting*. Petaluma, CA: Unicorn Books and Crafts, 1993.

*CYNTHIA NEWMAN enjoys finding patterns in architecture and nature and translating them into weavings. She shares her time between northeast Oregon and the Olympic peninsula.*

*KATZY LUHRING loves to transform woven ideas into reality. She is co-owner of Lunatic Fringe Yarns and spends her time surrounded by beautiful yarns!*