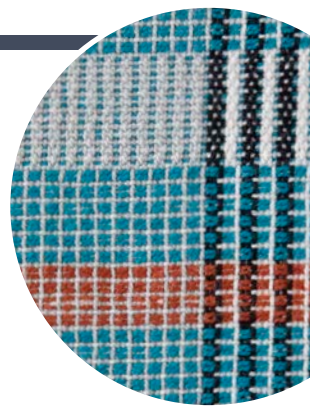




Bauhaus Weaver Hand Towels

CHRISTINE NOVOTNY



STRUCTURE

Summer and winter.

EQUIPMENT

4-shaft loom, 16" weaving width; 10-dent reed; 2 shuttles; 4–5 bobbins.

YARNS

Warp: 8/2 unmercerized cotton (3,360 yd/lb; Maurice Brassard), #100 Naturel, 268 yd; #83 Noir, 88 yd; #415 Light Grey, 272 yd.
Weft: Tabby: 8/2 unmercerized cotton, #415 Light Grey, 230 yd (for both towels).
Pattern: 8/2 unmercerized cotton, **Anni towel:** #5212 Honey, 96 yd; #100 Naturel and #83 Noir, 8 yd each. **Gunta towel:** #4616 Peacock Blue, 88 yd; #1316 Rouille, #100 Naturel, and #83 Noir, 8 yd each.
Hems: sewing thread, light gray, 16 yd.

OTHER SUPPLIES

White glue or Fray Check; twill tape (optional for hanging tabs).

WARP LENGTH

314 ends 2 yd long (includes floating selvages; allows 5" for take-up, 22" for loom waste).

SETTS

Warp: 20 epi (2/dent in a 10-dent reed).
Weft: 21 ppi (tabby and pattern weft).

DIMENSIONS

Width in the reed: 15 $\frac{1}{10}$ ".

Woven length: (measured under tension on the loom) 45".

Finished size: (after wet-finishing and hemming) two towels, 13" × 17".

The weavers of the Bauhaus are responsible for innovation within the textile industry. Walter Gropius founded the German Bauhaus School in 1919. His design philosophy used fine art and craft to combine aesthetics with everyday function. Despite the claimed egalitarian ideals of the Bauhaus, most women who came to the school were assigned to the weaving workshop. Weaving was “women’s work.” Despite this limitation, the workshop artists used their keen design eyes and echoed industry trends to innovate through color, form, and unconventional materials. Anni Albers, Gunta Stölzl, Otti Berger, and many other weavers stand out today for their immense contributions to contemporary textiles.

These Bauhaus-inspired towels use a summer and winter weave structure. Summer and winter often adorned coverlets of the 1800s. This hand-towel design, in keeping with the Bauhaus fundamental aesthetic, uses this weave structure with two simple blocks. The monochromatic shifts in the warp combined with stark black-and-white stripes add visual interest and play well with the color changes inherent in the weave structure. The towels can be woven with a neutral or vibrant-colored pattern weft for different effects—the beige neutral evokes a calm and subtle Anni Albers feel, while a bright turquoise weft inspires a playful and colorful Gunta Stölzl aesthetic. The Bauhaus philosophy reveres simplicity, angularity, subtlety, and sharpness. These hand towels deliver a clean, modern design while paying homage to the Bauhaus weavers who drove the textile industry forward.

1 Wind a warp of 312 warp ends 2 yd long following the warp color order in Figure 1. Wind 2 additional ends of Naturel to use as floating selvages and set them aside. Warp the loom using your preferred method following the draft in Figure 2. Centering for a weaving width of 15 $\frac{1}{10}$ ", sley 2 per dent in a 10-dent reed. Sley the floating selvages in dents on either side of the warp and weight them over the back beam.

2 Wind a bobbin with each of the weft colors. Spread the warp with scrap yarn and then weave 8 picks ($\frac{1}{4}$ ") for a header using light gray sewing thread. Use treadles 1 and 2. This sewing thread header will be folded under before hemming to reduce bulk in the hem. You may be able to simply place the sewing thread spool directly in your boat shuttle.

3 Weave 20 picks (about 1") of pseudo plain weave with Light Grey for the hem, as shown in Figure 2, then weave the pattern as shown, using Light Grey as tabby and the corresponding pattern weft colors based on your chosen colorway, Anni or Gunta. End with 20 picks (1") of pseudo plain weave and $\frac{1}{4}$ " of sewing thread as you did at the beginning.

1. WARP COLOR ORDER


136		3x			6x			
20		116						Light Grey
44	4	4	4	4	4	4	Noir	
132	53	19	4		4	24	Naturel	
312 ends total								

HEDDLE COUNT

Shaft 4	108
Shaft 3	48
Shaft 2	78
Shaft 1	78
Total	312

4 Weave 2 picks of scrap yarn to separate the towels, then weave the second towel.

5 Apply a thin strip of watered-down white glue or Fray Check to secure the edge and then, when dry, cut your towels from the loom. Zigzag along the edge of the sewing thread picks and then cut the towels apart. Machine wash and dry. Pull the towels out while they are a bit damp and press with a hot iron.

6 Press hems by folding the sewing thread ends over and steaming, and then folding half of the pseudo plain weave hem over. Pin and machine sew with a straight stitch, or handstitch. If desired, before stitching, slip in the ends of a 2" piece of twill tape to create a hanging tab. 

RESOURCES

Davison, Marguerite Porter. *A Handweaver's Pattern Book*. Swarthmore, Pennsylvania: Marguerite Porter Davison, 1944.

CHRISTINE NOVOTNY runs *CAN Goods* (can-goods.com), a handweaving studio dedicated to creating colorful and functional handwoven items.

2. DRAFT

