



**Emerging K-Beauty Trend
as Promotional Product**

SHEET MASKS

Essence from rose petal extract focuses on smoothing the complexion and brightening the skin while replenishing the skin's moisture for a radiant look.



U1015 5 Packs

4 1/2" x 6 1/4" x 3/4" (Package)

4 1/8" x 5 7/8" (Sheet Mask)

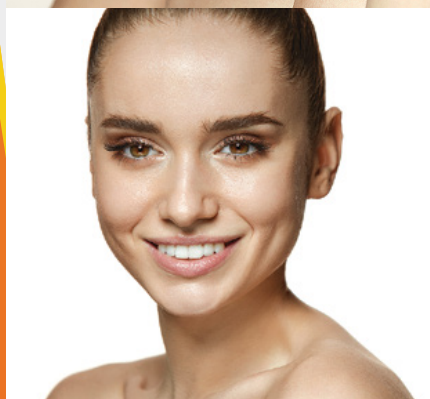
Sheet Masks inserted into package

U1012 SM Sleeve

4 1/4" x 6" (Sleeve)

4 1/8" x 5 7/8" (Sheet Mask)

Sheet Mask is inserted into sleeve envelope



This refreshing water-based sheet mask is accentuated with a pleasant rose fragrance that leaves the skin hydrated and radiant. Serum from the mask delivers conditioning to the skin for moisturizing effects. The sheet mask is designed to fit to the contours of the face and adheres well to the skin. This mask is made from 100% natural cellulose fibers, making it biodegradable and sustainable.

Specifications

Full Color Custom Packed Sheet Mask. An enormously popular K-beauty phenomenon, sheet masks are now available as a promotional gift in an attractive paper sleeve.

- Free Setup / Art / Logos
- Bleeds Allowed on All Sides
- Made with 100% Natural Cellulose Fibers
- Romantic Rose Scent
- Sheet Mask Made in Korea
- Package Printed in USA

Material

Package : 111# Gloss Cover

Printing

Digital : Full Color Printing on Front & Back

Die Cutting

No Charge for Standard Package Shape
Custom Shape is Available, add

Custom Shape, add \$150.00 (G) each shape

Option

Artwork Change : \$67.00 (G) each



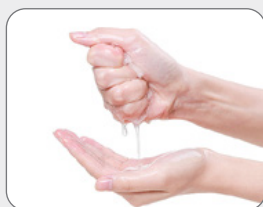
Tough

More tear resistant than a typical mask



Ease of Use

Better adherence to the skin during use



Plentiful

Mask contains an ample serum

DIGITAL

6C

ITEM NO		250	500	1000	2500	5000	10000
U1012	SM Sleeve	5.91	4.76	4.11	3.71	3.46	3.27
U1014	2 Pack Sleeve	8.25	7.11	6.46	6.07	5.82	5.62
U1015	5 Pack Carton	14.93	14.41	13.76	13.31	12.93	12.73