



FACI ASIA PACIFIC Office Building Awarded the Greenest in ASEAN Energy Awards 2021



<https://aseanenergy.org/>

On the 15th of September 2021, the **ASEAN Energy Awards 2021** Ceremony has been held along the meeting of ASEAN Ministers of Energy (AMEM).

This meeting is held annually among the 10 member states of ASEAN, representing more than 650 million inhabitants.

During the ceremony, awards are given to achievements in projects for Renewable Energy, Coal transition, Energy Management, Energy Efficiency and Green Buildings.

FACI Asia Pacific was awarded the **First Prize** In the **Green Buildings**, for the **Small and Medium buildings** category.



The Building



The new Office Building opened in October 2017 and was awarded the **Green Mark GOLD PLUS** by BCA (Building and Construction Authority of Singapore), first building in the Industrial compound of Jurong Island to achieve it.



Among the characteristics of the project, more than 90% of the energy is provided by solar power, and appropriate designs, equipment and materials have been chosen to increase energy efficiency while being more environmentally friendly.

FACI ASIA PACIFIC ANCILLARY BUILDING

New Non-Residential Building

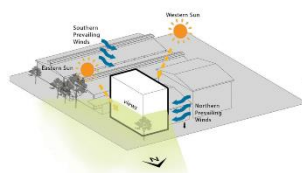


GREEN MARK AWARD FOR BUILDINGS | GOLD^{PLUS}

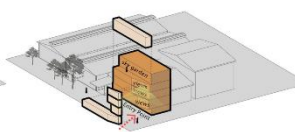


Client/Developer	FACI ASIA PACIFIC PTE. LTD.
Architect	ADX Architects Pte Ltd
M&E Engineer	Aurecon Singapore Pte Ltd
Structural Engineer	WM Leow & Associates
Main Contractor	Streamline Engineering Pte Ltd
Landscape Consultant	Meod Pte Ltd

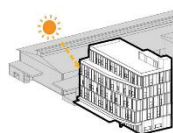
- Estimated energy savings: 125,102kWh/yr; Estimated water savings: 263.64m³, ETTV: 25.19W/m²
- Use of Efficient Glazing for the facade
- Extensive adoption of environmentally friendly products(SGLS/SGBC certified)
- Use of green wall and sky terrace
- Extensive Site Analysis and impact assessment studies
- Location of all the offices along periphery for daylighting
- All LED light fittings for the artificial lighting
- Solar thermal and Solar PV Panels



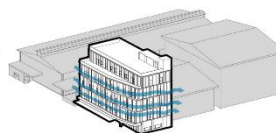
SITE ANALYSIS



CUT OUTS



SOLAR REFLECTION
Vertical fins on the facade screens solar heat from the Eastern Sun



VENTILATION
Openings on the Eastern and Northern facade allows for cross ventilation to occur within the building

ZONING

- Change Room
- Staff Lounge
- Reception
- Meeting Room
- Toilet
- Utilities
- Sky Garden
- Office
- Vertical Circulation

