

MP LINE

cmatic[®]
P N E U M A T I C F I T T I N G S

80 bar 润滑用快插接头
Medium Pressure Push-in Fittings, 80 bar



MP快插接头，满足中压润滑场合应用，耐压可达80Bar。
凭借其技术性能，MP系列对现有润滑接头提供补充，延续整个
C.MATIC产品线的鲜明特征：快速连接、确保性能与可靠性。



MP is a push-in Fitting conceived for Medium pressure grease applications up to
80 bar.
MP completes, with its technical features the existing products offer for central
lubrication applications and highlights further the distinguishing marks of the whole
C.MATIC production: Quick connections, performance and reliance guarantee.

MP

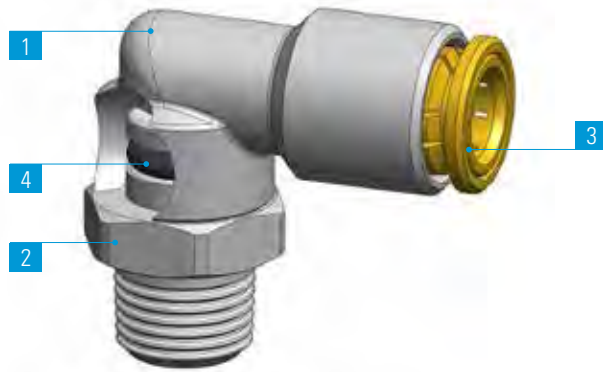
| 1 | 2 | 3 | 4 |
|--|--|--|--------------|
| 本体 Body | 螺纹体 Threaded Screws | 卡爪 Gripping Collet | 密封圈 Seals |
| 镀镍黄铜UNI EN 12164 CW614N - UNI EN 12165 CW617N Brass UNI EN 12164 CW614N - UNI EN 12165 CW617N Nickel Plated | UNI EN 12164 CW614N镀镍黄铜 Brass UNI EN 12164 CW614N Nickel Plated | 黄铜UNI EN 12164 CW614N Brass UNI EN 12164 CW614N | NBR NBR |



-20°C - 80°C



最大80 bar



| | M6x1 | M8x1 | M10x1 | R1/8 | R1/4 |
|---|------|------|-------|------|------|
| 4 | • | • | • | • | |
| 6 | • | • | • | • | |
| 8 | | | • | • | • |

技术规格

建议的连接管路：
PA6-6 (4x1.5 – 6x3), PA12 HR
可接受的管路公差：
+/- 0.07 mm，最大直径Ø 8 mm。

应用领域：
润滑系统。



最大工作压力取决于所用管路的类型和工作温度。这两个因素有可能导致接头爆破压力的降低。

DATA SHEET

Recommended tubings:
PA6-6 (4x1,5 – 6x3), PA12 HR
Acceptable Tolerances on the tubings:
+/- 0,07 mm up to Ø 8 mm.

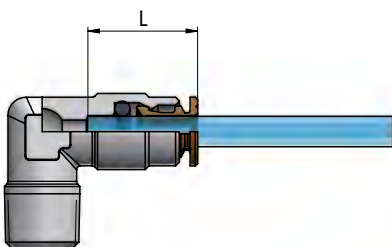
Application fields:
Lubrication installations.



The pressure rate achievable can vary depending on the tubing used and on the room temperature. These two factors may in fact lower the tube bursting pressure.

管路插入深度

Tubing insertion depth



| 管径 \varnothing_e | L |
|--------------------|------|
| 4 | 14.5 |
| 6 | 17 |
| 8 | 17 |

- 1.沿管路垂直切割 (使用TCUT管路切刀),确认内外管壁没有毛刺,同时注意避免管路截面呈椭圆形。
- 2.将管路插入接头,到底为止。

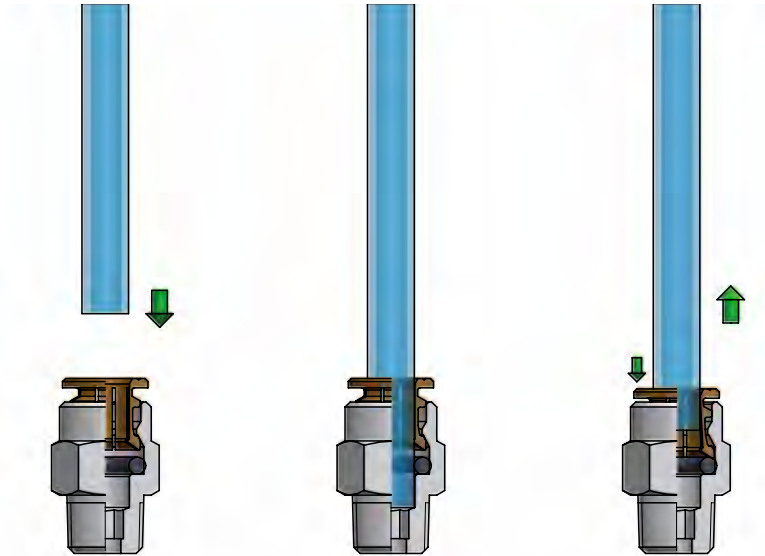
拔出管路:

垂直按压释放环,同时拔出管路即可。

1. Cut the tube square (by means of a hose cutter i.e. our TCUT) making sure that no burrs are left and that the tube is not oval.
2. Insert the tube into the fitting until it bottoms.

Tube release

While pressing on the release ring, pull out the tube from the fitting.



完成连接后,请确保管路上不承受外力;此外,请确保管路连接的最小弯曲半径符合本样册第335页之规定。为了避免管路意外松脱,任何物体均不要接触释放环。作用在释放环上任何外力,包括侧向力,均可能导致管路意外松脱。

螺纹拧紧时,请参考第六页列出的建议扭矩。



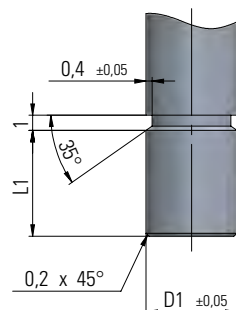
Once the tubing is connected to the fitting, make sure that the tubing is not subject to any tensile strength and that the min. recommended bending radius stated in the tubing section of this catalogue is complied with (see page 335).

To prevent any accidental tube release, no components have to come in touch with the release ring and exercise any unwanted pressure on the same. Indeed however lateral, any load on the release ring may cause the tube disconnection.

To tighten threads, please check out our tightening torque chart illustrated at page 6.

如果将金属端管与接头连接,端管截面和尺寸必须与下列建议相符。如果将具有不同规格的端管与接头相连,可能会对接头造成无法修复的损坏,因此无法确保接头的运行。

If a metal stem is connected to the fitting, the stem has to be manufactured according to the profile and sizes as set forth below. Should the fitting be connected to a metal stem not complying to the technical features recommended, the fitting may get irreversibly damaged and its function would no longer be guaranteed.

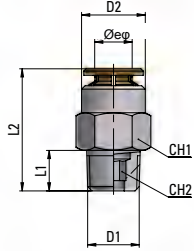


| D ₁ | L ₁ |
|----------------|----------------|
| 4 | 6 |
| 6 | 7 |
| 8 | 7 |

MP 11

锥螺纹直管接头

Taper Straight, male

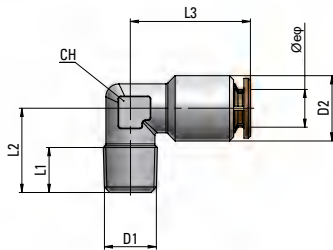


| 类型 | 管径 Øe | D1 | D2 | L1 | L2 | CH1 | CH2 | g Δ |
|-------------|----------------|-------|----|-----|------|-----|-----|------------|
| 11 04 18 | 4 | R1/8 | 9 | 7.5 | 18.5 | 10 | 3 | 7.2 |
| 11 04 M6x1 | 4 | M6x1 | 9 | 8 | 23 | 10 | 2.5 | 7.6 |
| 11 04 M8x1 | 4 | M8x1 | 9 | 8 | 20 | 10 | 3 | 6.7 |
| 11 04 M10x1 | 4 | M10x1 | 9 | 8 | 20 | 11 | 3 | 9.3 |
| 11 06 18 | 6 | R1/8 | 12 | 7.5 | 21.5 | 12 | 3 | 10.3 |
| 11 06 M6x1 | 6 | M6x1 | 12 | 8 | 25.5 | 12 | 2.5 | 11.6 |
| 11 06 M8x1 | 6 | M8x1 | 12 | 8 | 25.5 | 12 | 4 | 12.3 |
| 11 06 M10x1 | 6 | M10x1 | 12 | 8 | 22 | 12 | 4 | 10.9 |
| 11 08 18 | 8 | R1/8 | 14 | 7.5 | 25.5 | 14 | 5 | - |
| 11 08 14 | 8 | R1/4 | 14 | 11 | 25.5 | 14 | 6 | - |
| 11 08 M10x1 | 8 | M10x1 | 14 | 8 | 26 | 14 | 5 | - |

MP 14

锥外螺纹弯管接头

Taper Elbow Fitting, male

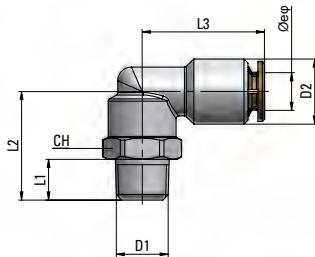


| 类型 | 管径 Øe | D1 | D2 | L1 | L2 | L3 | CH | g Δ |
|-------------|----------------|-------|----|-----|------|------|----|------------|
| 14 04 18 | 4 | R1/8 | 9 | 7.5 | 15.5 | 20 | 10 | 12.6 |
| 14 04 M6x1 | 4 | M6x1 | 9 | 8 | 17 | 20 | 10 | 13.3 |
| 14 04 M8x1 | 4 | M8x1 | 9 | 8 | 17 | 20 | 10 | 13.4 |
| 14 04 M10x1 | 4 | M10x1 | 9 | 8 | 18 | 20 | 10 | 14.3 |
| 14 06 18 | 6 | R1/8 | 12 | 7.5 | 15.5 | 21 | 10 | 14.2 |
| 14 06 M6x1 | 6 | M6x1 | 12 | 8 | 17 | 21 | 10 | 14.6 |
| 14 06 M8x1 | 6 | M8x1 | 12 | 8 | 17 | 21 | 10 | 14.8 |
| 14 06 M10x1 | 6 | M10x1 | 12 | 8 | 18 | 21 | 10 | 15.8 |
| 14 08 18 | 8 | R1/8 | 14 | 7.5 | 19 | 23.5 | 12 | - |
| 14 08 14 | 8 | R1/4 | 14 | 11 | 20 | 23.5 | 12 | - |
| 14 08 M10x1 | 8 | M10x1 | 14 | 8 | 19 | 23.5 | 12 | - |

MP 15

可调向锥外螺纹弯管接头

Taper Swivelling Elbow Fitting, male

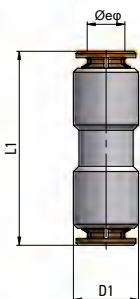


| 类型 | 管径 Øe | D1 | D2 | L1 | L2 | L3 | CH | g Δ |
|-------------|----------------|-------|----|-----|------|------|----|------------|
| 15 04 18 | 4 | R1/8 | 9 | 7.5 | 20 | 20 | 13 | 21.9 |
| 15 04 M6x1 | 4 | M6x1 | 9 | 8 | 20.5 | 20 | 13 | 19.9 |
| 15 04 M8x1 | 4 | M8x1 | 9 | 8 | 20.5 | 20 | 13 | 20.7 |
| 15 04 M10x1 | 4 | M10x1 | 9 | 8 | 21.5 | 20 | 13 | 23.4 |
| 15 06 18 | 6 | R1/8 | 12 | 7.5 | 20 | 21.5 | 13 | 24.2 |
| 15 06 M6x1 | 6 | M6x1 | 12 | 8 | 20.5 | 21.5 | 13 | 21.7 |
| 15 06 M8x1 | 6 | M8x1 | 12 | 8 | 20.5 | 21.5 | 13 | 22.6 |
| 15 06 M10x1 | 6 | M10x1 | 12 | 8 | 21.5 | 21.5 | 13 | 25.8 |
| 15 08 18 | 8 | R1/8 | 14 | 7.5 | 20.5 | 23 | 13 | - |
| 15 08 14 | 8 | R1/4 | 14 | 11 | 24 | 23 | 13 | - |
| 15 08 M10x1 | 8 | M10x1 | 14 | 8 | 22 | 23 | 13 | - |

MP 26

对接接头

Union

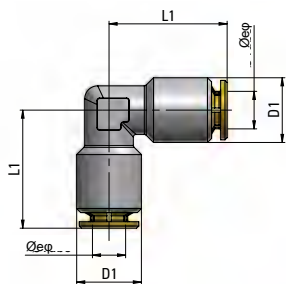


| 类型 | 管径 Øe | D1 | L1 | g Δ |
|----------|----------------|----|------|------------|
| 26 04 04 | 4 | 9 | 30 | 10.7 |
| 26 06 06 | 6 | 12 | 33.5 | 15.7 |
| 26 08 08 | 8 | 14 | 36 | - |

MP 28

直角对接接头

Union Elbow

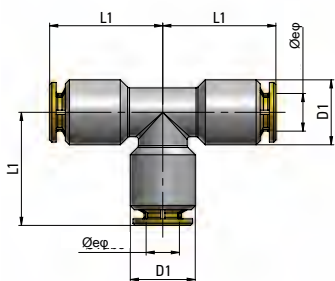


| 类型 | 管径Øe | D2 | L1 | g $\Delta\Delta$ |
|----------|------|----|------|------------------|
| 28 04 04 | 4 | 9 | 20.5 | - |
| 28 06 06 | 6 | 12 | 22 | - |
| 28 08 08 | 8 | 14 | 23.5 | - |

MP 29

正T型三通接头

Union Tee



| 类型 | 管径Øe | D2 | L1 | g $\Delta\Delta$ |
|----------|------|----|----|------------------|
| 29 04 04 | 4 | 9 | 20 | - |
| 29 06 06 | 6 | 12 | 21 | - |
| 29 08 08 | 8 | 14 | 22 | - |