



PU Safety

cmatic[®]
P N E U M A T I C F I T T I N G S

NPT安全快速接头
Safety Couplings, NPT

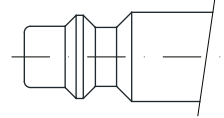
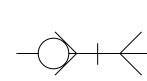
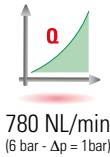


PU 42

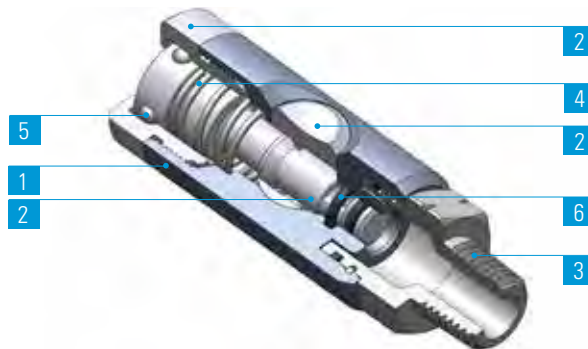
安全型按钮式快速接头，ISO 6150 B-12外形

Push-Button Safety Coupling, according to ISO 6150 B-12

1	2	3	4	5	6	
本体 Body	按钮、阀芯和排气孔 Button, Valve and Venting Ring	螺纹 Thread	弹簧 Springs	滚珠 Balls	密封圈 Seals	接头 Plugs
阳极氧化铝 Anodised Aluminium	硬化镀锌钢 Hardened, zinc plated steel	UNI EN 12164 CW614N镀镍 黄铜 Brass nickel plated UNI EN 12164 CW614N	AISI 302不锈钢 Stainless Steel AISI 302	AISI 420不锈钢 Stainless Steel AISI 420	NBR NBR	硬化镀锌钢 Hardened, zinc plated steel



INDUSTRIAL Profile
MIL C4109 Profile
ISO 6150 B-12 Profile



快速接头在安装后依然可以调整方向。
The coupling will remain swivelling after installation.

连接 - 断开

只需将接头插入本体即可。

如需将接头与内螺纹本体断开，必须执行以下2个简单步骤：

阶段1：

按下松开按钮，从下游回路排出空气；此阶段内接头的内螺纹内部依然锁定。

阶段2：

再次按下按钮，从内螺纹本体内取出接头。

CONNECTION - TO RELEASE

Insert the plug into the Coupling

To disconnect the plug follow instructions below:

Plug inserted in Coupling

Step 1:

Press the button once to vent the downstream air from the circuit; at this time the plug is still captive in the coupling.

Step 2:

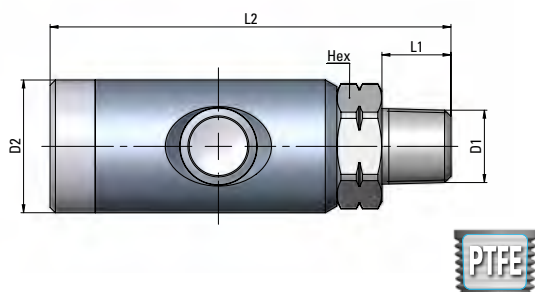
Press the button one more time to release the plug.



PU 42-11

外螺纹接头体

Male Coupling

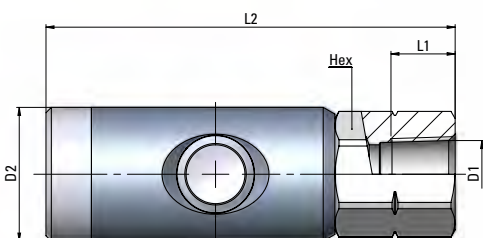


类型	D1 NPTF	D2	L1	L2	HEX (mm)	g $\Delta\Delta$
11 00 14	1/4	25	13	75.5	21	110.10
11 00 38	3/8	25	13	74.5	21	120.34
11 00 12	1/2	25	17	78.5	22	-

PU 42-12

内螺纹接头体

Female Coupling

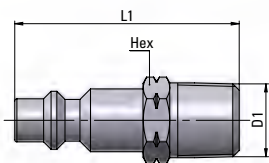


类型	D1 NPTF	D2	L1	L2	HEX (mm)	g $\Delta\Delta$
12 00 14	1/4	25	12	76.5	21	127.60
12 00 38	3/8	25	12.5	77	21	118.00
12 00 12	1/2	25	13.5	79	24	140.00

PU 42-20

外螺纹插头体

Male Plug

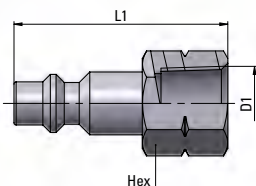


类型	D1 NPTF	L1	HEX (mm)	g $\Delta\Delta$
20 00 14	1/4	42	14	22.60
20 00 38	3/8	42	18	28.90
20 00 12	1/2	47	22	43.10

PU 42-21

内螺纹插头体

Female Plug



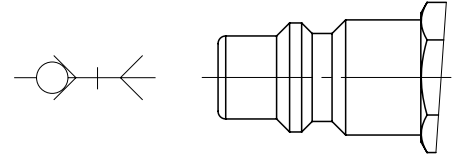
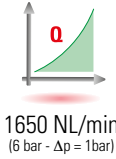
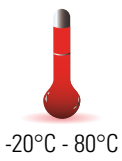
类型	D1 NPTF	L1	HEX (mm)	g $\Delta\Delta$
21 00 14	1/4	40	17	28.10
21 00 38	3/8	40	20	31.60
21 00 12	1/2	44	24	50.00

PU 44

安全型按钮式快速接头，ISO 6150 B-15外形

Push-Button Safety Coupling according to ISO 6150 B-15

1	2	3	4	5	6	
本体 Body	按钮、阀芯和排气孔 Button, Valve and Venting Ring	螺纹 Thread	弹簧 Springs	滚珠 Balls	密封圈 Seals	接头 Plugs
阳极氧化铝 Anodised Aluminium	硬化镀锌钢 Hardened, zinc plated steel	UNI EN 12164 CW614N镀镍黄铜 Brass nickel plated UNI EN 12164 CW614N	AISI 302不锈钢 Stainless Steel AISI 302	AISI 420不锈钢 Stainless Steel AISI 420	NBR NBR	硬化镀锌钢 Hardened, zinc plated steel



ISO 6150 B-15外形
ISO 6150 B-15 Profile



快速接头在安装后依然可以调整方向。
The coupling will remain swivelling after installation.

连接 - 断开

CONNECTION - TO RELEASE

只需将接头插入本体即可。

Insert the plug into the coupling

如需将接头与内螺纹本体断开，必须执行以下2个简单步骤：

将接头插入内螺纹本体

阶段1：

按下松开按钮，从下游回路排出空气；此阶段内接头的内螺纹内部依然锁定。

阶段2：

再次按下按钮，从内螺纹本体内取出接头。

To disconnect the plug follow instructions below:

Plug inserted in the coupling

Step 1:

Press the button once to vent the downstream air from the circuit; at this time the plug is still captive in the coupling.

Step 2:

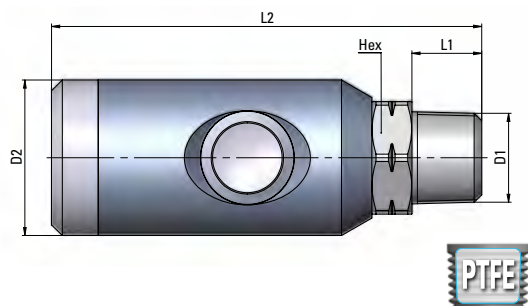
Press the button one more time to release the plug.



PU 44-11

外螺纹接头体

Male Coupling

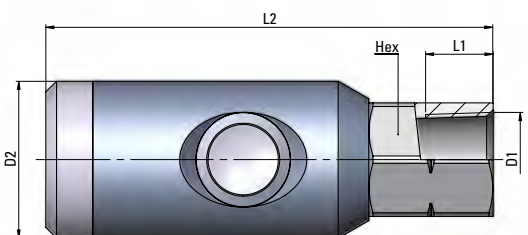


类型	D1 NPTF	D2	L1	L2	HEX (mm)	g	ΔΔ
11 00 38	3/8	29	13	80	21	153.00	
11 00 12	1/2	29	17	84	22	-	

PU 44-12

内螺纹接头体

Female Coupling

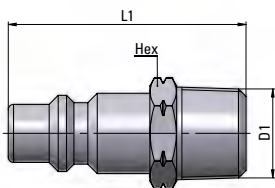


类型	D1 NPTF	D2	L1	L2	HEX (mm)	g	ΔΔ
12 00 38	3/8	29	12.5	82.5	21	168.50	
12 00 12	1/2	29	13.5	84.5	24	-	

PU 44-20

外螺纹插头体

Male Plug

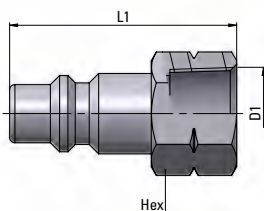


类型	D1 NPTF	L1	HEX (mm)	g	ΔΔ
20 00 38	3/8	45.5	17	-	
20 00 12	1/2	45.5	18	-	

PU 44-21

内螺纹插头体

Female Plug



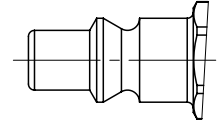
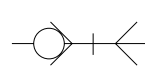
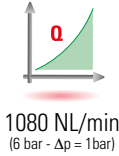
类型	D1 NPTF	L1	HEX (mm)	g	ΔΔ
21 00 38	3/8	42.5	17	-	
21 00 12	1/2	42.5	20	-	

PU 45

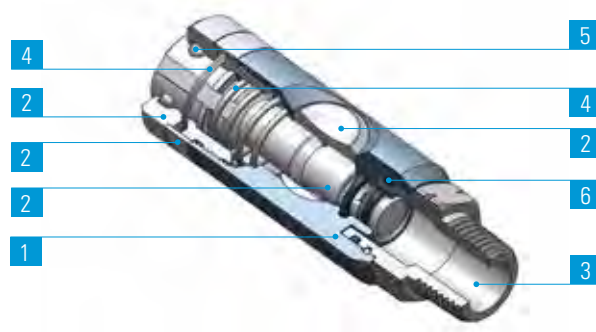
安全型按钮式快速接头，ARO 210外形

Push-Button Safety Coupling, according to ARO 210

1	2	3	4	5	6	
本体 Body	按钮、阀芯和排气孔 Button, Valve and Venting Ring	螺纹 Thread	弹簧 Springs	滚珠 Balls	密封圈 Seals	接头 Plugs
阳极氧化铝 Anodised Aluminium	硬化镀锌钢 Hardened, zinc plated steel	UNI EN 12164 CW614N镀镍 黄铜 Brass nickel plated UNI EN 12164 CW614N	AISI 302不锈钢 Stainless Steel AISI 302	AISI 420不锈钢 Stainless Steel AISI 420	NBR NBR	镀镍钢 Nickel plated steel



ARO 210型材
ARO 210 Profile



快速接头在安装后依然可以调整方向。
The coupling will remain swivelling after installation.

连接 - 断开

只需将接头插入本体即可。

如需将接头与内螺纹本体断开，必须执行以下2个简单步骤：

将接头插入内螺纹本体

阶段1：

按下松开按钮，从下游回路排出空气；此阶段内接头的内螺纹内部依然锁定。

阶段2：

再次按下按钮，从内螺纹本体内取出接头。

CONNECTION - TO RELEASE

Insert the plug into the Coupling

To disconnect the plug follow instructions below:

Plug inserted in Coupling

Step 1:

Press the button once to vent the downstream air from the circuit; at this time the plug is still captive in the coupling.

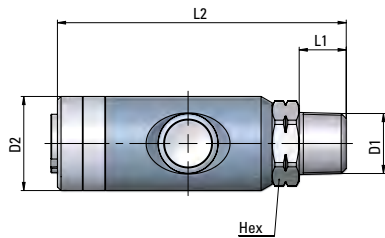
Step 2:

Press the button one more time to release the plug.



PU 45-11

外螺纹接头体

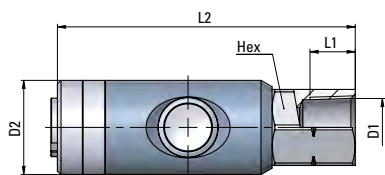


Male Coupling

类型	D1 NPTF	D2	L1	L2	Hex	g $\Delta\Delta$
11 00 14	1/4	26	13	82.5	21	-
11 00 38	3/8	26	13	81.5	21	-
11 00 12	1/2	26	17	85.5	22	-

PU 45-12

内螺纹接头体

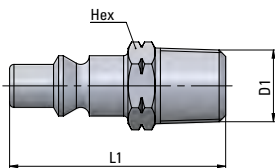


Female Coupling

类型	D1 NPTF	D2	L1	L2	CH	g $\Delta\Delta$
12 00 14	1/4	26	9	78.5	21	-
12 00 38	3/8	26	10	80.5	21	-
12 00 12	1/2	26	11	82.5	24	-

PU 45-20

外螺纹插头体

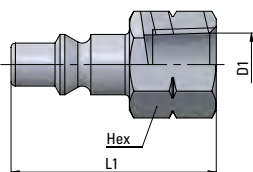


Male Plug

类型	D1 NPTF	L1	CH	g $\Delta\Delta$
20 00 14	1/4	40	14	-
20 00 38	3/8	40	18	-
20 00 12	1/2	45	22	-

PU 45-21

内螺纹插头体



Female Plug

类型	D1 NPTF	L1	CH	g $\Delta\Delta$
21 00 14	1/4	38	17	-
21 00 38	3/8	38	20	-
21 00 12	1/2	42	24	-