



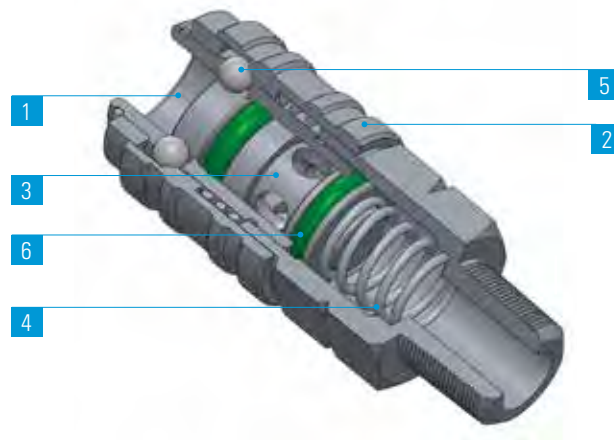
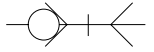
# PUX LINE

***cmatic***<sup>®</sup>  
P N E U M A T I C F I T T I N G S

NPT 316L 不锈钢快速接头  
316L Stainless Steel Couplings, NPT

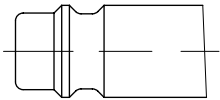


1	2	3	4	5	6	
本体 Body	滑套 Command Sleeve	阀芯 Valve	弹簧 Springs	滚珠 Balls	密封圈 Seals	接头 Plugs
AISI 316L不锈钢(1.4404) Stainless Steel AISI 316L (1.4404)			AISI 302不锈钢 Stainless Steel AISI 30	AISI 420不锈钢 Stainless Steel AISI 420	FPM FPM	AISI 316L不锈钢(1.4404) Stainless Steel AISI 316L (1.4404)



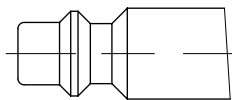
外形互换性  
Suitable with following plugs profiles

流量  
Flow rate (6 bar - Δp = 1bar)



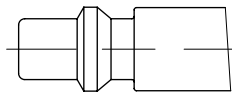
欧洲标准外形  
European Profile

820



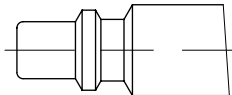
ISO 6150 B标准外形  
ISO 6150 B Profile

715



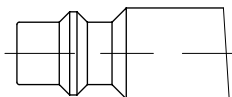
瑞典标准外形  
Standard Swedisch Profile

725



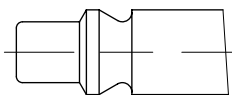
意大利标准外形  
Standard Italian Profile

670



MIL C4109标准外形  
MIL C4109 Profile

715



ARO 210标准外形  
ARO 210 Profile

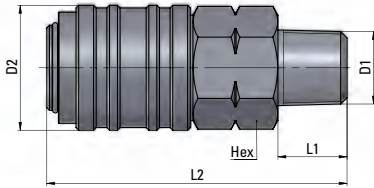
705

比例尺 1:1 - Scale 1:1

## PUX 10-11

外螺纹接头体

Male Coupling

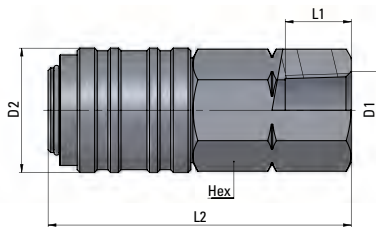


类型	D1 NPTF	D2	L1	L2	HEX (mm)	g	△△
11 00 14	1/4	.925	.512	2,224	20	-	-
11 00 38	3/8	.925	.512	2,224	20	-	-

## PUX 10-12

内螺纹接头体

Female Coupling

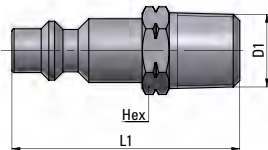


类型	D1 NPTF	D2	L1	L2	HEX (mm)	g	△△
12 00 14	1/4	.925	.492	2,303	20	-	-
12 00 38	3/8	.925	.492	2,303	20	-	-

## PUX 10-20

外螺纹插头体,  
ISO6150 B-12外形

Male Plug according to ISO6150 B-12 profile

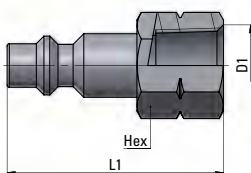


类型	D1 NPTF	L1	HEX (mm)	g	△△
20 00 14	1/4	1,654	14	-	-
20 00 38	3/8	1,654	18	-	-

## PUX 10-21

内螺纹插头体,  
ISO6150 B-12外形

Female Plug according to ISO6150 B-12 profile



类型	D1 NPTF	L1	HEX (mm)	g	△△
21 00 14	1/4	1,575	17	-	-
21 00 38	3/8	1,575	20	-	-

类型	Profiles			页码ref.
<b>GU41</b>	ISO 6150 C-10	5.5		BSP 212
<b>GU42</b>	ISO 6150 B-12 US MIL4109	5.5		BSP 214
<b>PU42</b>	ISO 6150 B-12 US MIL4109	5.5		NPT 226
<b>GU43</b>	ISO 6150 C-14	8		BSP 216
<b>GU44</b>	ISO 6150 B-15	8		BSP 218
<b>PU44</b>	ISO 6150 B-15	8		NPT 228
<b>GU45</b>	ARO 210	5.5		BSP 220
<b>GU46</b>	European Profile	7.4		BSP 222
<b>GX46</b> 不锈钢	European Profile	7.4		BSP 232