

RA LINE

cmatic[®]
PNEUMATIC FITTINGS

黄铜镀镍标准接头
Brass Nickel-Plated Standard Fittings

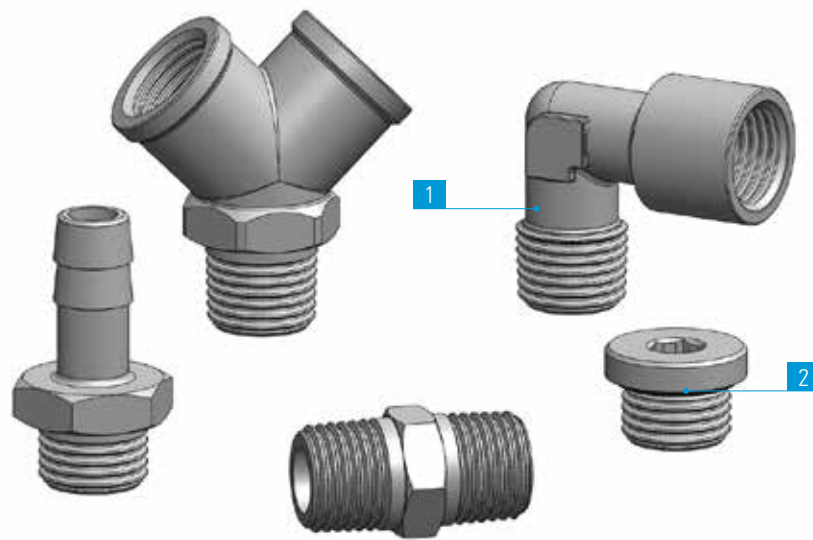
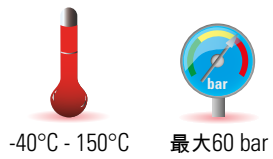


RA系列通常被认为是“附件”或“标准接头”系列，由螺纹转接头，减径接头，堵头，软管接头、L型接头、T型接头、十字接头组成。考虑到这些接头所覆盖的各种辅助功能，很明显本系列能够为其它系列带来补充。
RA系列所有接头材质均为黄铜经过镀镍表面处理。



The RA line, also known as the “Accessories line” or the “Standard Fitting line” consists of a wide variety of components, such as Nipples, Reduction pieces, Connections, Plugs, Hose connections, L-T and Cross Fittings.
Due to the multiple auxiliary functions of this line, the RA Fittings are the right complement for other ranges.
All components are brass nickel-plated.

1	2
接头本体 Fitting Body	密封圈 Seals
镀镍黄铜 UNI EN 12164 CW614N - UNI EN 12165 CW617N Brass UNI EN 12164 CW614N - UNI EN 12165 CW617N Nickel Plated	NBR NBR



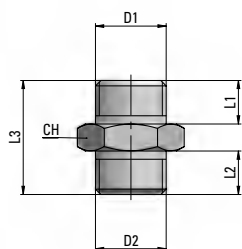
	M5x0.8	G1/8	G1/4	G3/8	G1/2	G3/4	G1"	R1/8	R1/4	R3/8	R1/2	R3/4	R1"
	•	•	•	•	•	•	•	•	•	•	•	•	•

应用领域：
气动、液压和油压系统。

Application fields:
Pneumatic, hydraulic and oleodynamic circuits.

RA 11

直螺纹转接头

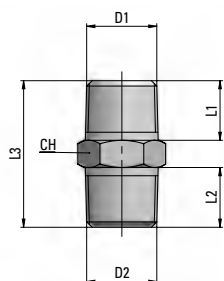


Nipple, parallel

类型	D1	D2	L1	L2	L3	CH	g Δ
11 M5 M5	M5x0.8	M5x0.8	5	5	13.5	8	2
11 M5 18	M5x0.8	G1/8	5	6	15.5	14	8
11 18 18	G1/8	G1/8	6	6	16.5	14	8
11 18 14	G1/8	G1/4	6	8	19	17	14.5
11 18 38	G1/8	G3/8	6	9	20	19	19
11 14 14	G1/4	G1/4	8	8	21	17	16
11 14 38	G1/4	G3/8	8	9	22	19	21
11 14 12	G1/4	G1/2	8	10	23.5	24	32
11 38 38	G3/8	G3/8	9	9	23	19	22
11 38 12	G3/8	G1/2	9	10	24.5	24	35
11 12 12	G1/2	G1/2	10	10	25.5	24	35

RA 12

锥螺纹转接头

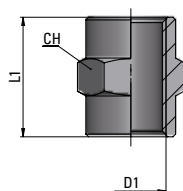


Nipple, taper

类型	D1	D2	L1	L2	L3	CH	g Δ
12 18 18	R1/8	R1/8	7.5	7.5	20	12	8
12 18 14	R1/8	R1/4	7.5	11	23.5	14	12
12 18 38	R1/8	R3/8	7.5	11.5	24	17	20
12 14 14	R1/4	R1/4	11	11	27	14	17.5
12 14 38	R1/4	R3/8	11	11.5	27.5	17	20
12 14 12	R1/4	R1/2	11	14	31	22	38
12 38 38	R3/8	R3/8	11.5	11.5	28	17	23
12 38 12	R3/8	R1/2	11.5	14	31.5	22	40
12 12 12	R1/2	R1/2	14	14	34	22	44
12 12 34	R1/2	R3/4	14	16.5	37.5	27	69
12 34 34	R3/4	R3/4	16.5	16.5	40	27	78
12 3/4 1"	R3/4	R1"	16.5	19	42.5	34	112
12 1" 1"	R1"	R1"	19	19	45.5	34	128

RA 13

转接头

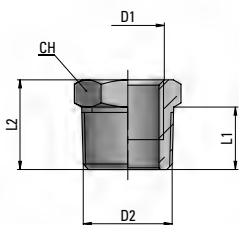


Joint Piece

类型	D1	L1	CH	g Δ
13 00 M5	M5x0.8	11	8	2
13 00 18	G1/8	15	14	10.6
13 00 14	G1/4	22	17	18.7
13 00 38	G3/8	23	22	34.5
13 00 12	G1/2	28	26	48.4
13 00 34	G3/4	32	32	78
13 00 1"	G1"	35	38	100

RA 14

锥螺纹减径接头



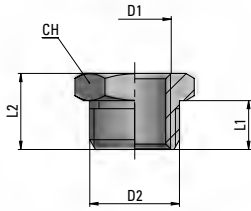
Taper Female-Male Reducing Connector

类型	D1	D2	L1	L2	CH	g Δ
14 18 14	G1/8	R1/4	11	16	14	10.6
14 18 38	G1/8	R3/8	11.5	16.5	17	20.7
14 18 12	G1/8	R1/2	14	19.5	22	32.9
14 14 38	G1/4	R3/8	11.5	16.5	17	12.6
14 14 12	G1/4	R1/2	14	19.5	22	29.4
14 38 12	G3/8	R1/2	14	19.5	22	23.3
14 38 34	G3/8	R3/4	11	17.5	30	54
14 12 34	G1/2	R3/4	16.5	23.5	27	45
14 12 1"	G1/2	R1"	19	27	34	132
14 34 1"	G3/4	R1"	19	27	34	104

RA 15

直螺纹减径接头

Parallel Female-Male Reducing Connector

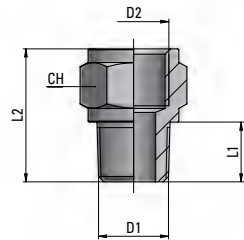


类型	D1	D2	L1	L2	CH	g Δ
15 M5 18	M5x0.8	G1/8	6	10.5	14	8
15 18 14	G1/8	G1/4	8	13	17	10
15 18 38	G1/8	G3/8	9	14	19	19
15 18 12	G1/8	G1/2	10	15.5	24	38
15 14 38	G1/4	G3/8	9	14	19	13
15 14 12	G1/4	G1/2	10	15.5	24	32
15 38 12	G3/8	G1/2	10	15.5	24	22
15 38 34	G3/8	G3/4	11	17.5	30	54
15 12 34	G1/2	G3/4	11	17.5	30	42
15 34 1"	G3/4	G1"	11.5	18.5	36	60

RA 16

锥螺纹内外转接头

Adaptor Male-Female, taper

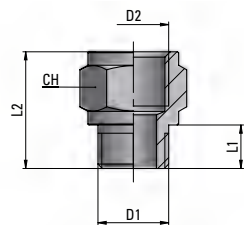


类型	D1	D2	L1	L2	CH	g Δ
16 18 18	R1/8	G1/8	8	18	14	13
16 18 14	R1/8	G1/4	8	21.5	17	18
16 18 38	R1/8	G3/8	8	22.5	22	31
16 14 14	R1/4	G1/4	11	24.5	17	22
16 14 38	R1/4	G3/8	11	25.5	22	42
16 14 12	R1/4	G1/2	11	29	24	40
16 38 38	R3/8	G3/8	11.5	26	22	42
16 38 12	R3/8	G1/2	11.5	29.5	24	40
16 12 12	R1/2	G1/2	14	32	26	57

RA 17

直螺纹内外转接头

Adaptor Male-Female, parallel

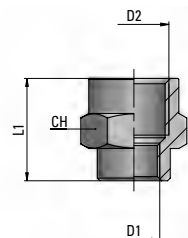


类型	D1	D2	L1	L2	CH	g Δ
17 M5 18	M5x0.8	G1/8	4	14.5	14	7
17 18 18	G1/8	G1/8	6	16	14	13
17 18 14	G1/8	G1/4	6	19.5	17	17
17 18 38	G1/8	G3/8	6	20.5	22	30
17 14 14	G1/4	G1/4	8	21.5	17	19
17 14 38	G1/4	G3/8	8	22.5	22	32
17 14 12	G1/4	G1/2	8	26	24	37
17 38 38	G3/8	G3/8	9	23.5	22	36
17 38 12	G3/8	G1/2	9	27	24	37
17 12 12	G1/2	G1/2	10	28	26	43

RA 18

减径接头

Reduction Joint Piece

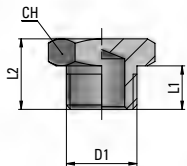


类型	D1	D2	L1	CH	g Δ
18 M5 18	M5x0.8	G1/8	13.5	14	10
18 18 14	G1/8	G1/4	19	17	18
18 18 38	G1/8	G3/8	20	22	36
18 14 38	G1/4	G3/8	22.5	22	41
18 14 12	G1/4	G1/2	26	24	46
18 38 12	G3/8	G1/2	26	24	46
18 12 34	G1/2	G3/4	30	32	76

RA 19

直螺纹堵头

Parallel Plug

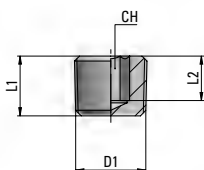


类型	D1	L1	L2	CH	g $\Delta\Delta$
19 00 M5	M5x0.8	5	8.5	8	2
19 00 18	G1/8	6	10	14	7.5
19 00 14	G1/4	8	13	17	13.5
19 00 38	G3/8	9	13.5	19	18
19 00 12	G1/2	10	15.5	24	31
19 00 34	G3/4	11	16.5	30	50
19 00 1"	G1"	13	19	38	76

RA 43

锥螺纹堵头

Taper Plug

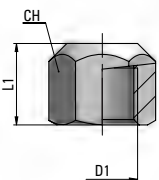


类型	D1	L1	L2	CH	g $\Delta\Delta$
43 00 18	R1/8	7.5	6	5	3
43 00 14	R1/4	11	8	6	8
43 00 38	R3/8	11.5	8	10	14
43 00 12	R1/2	14	9.5	10	27
43 00 34	R3/4	15.5	10	14	52
43 00 1"	R1"	17.5	11.5	17	80

RA 20

内螺纹堵头

Female Plug

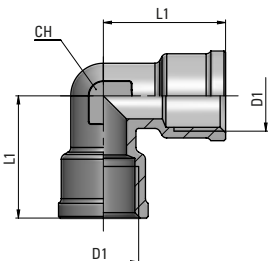


类型	D1	L1	CH	g $\Delta\Delta$
20 00 18	G1/8	10	14	9.6
20 00 14	G1/4	13.5	17	16.7
20 00 38	G3/8	14	20	21.3
20 00 12	G1/2	16.5	24	31.3
20 00 34	G3/4	18.5	30	52
20 00 1"	G1"	20	38	98

RA 21

内螺纹直角转接头

Female Elbow

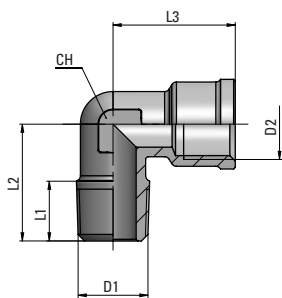


类型	D1	L1	CH	g $\Delta\Delta$
21 18 18	G1/8	18.5	10	15
21 14 14	G1/4	22.5	12	26
21 38 38	G3/8	25.5	15	44
21 12 12	G1/2	30	19	73

RA 22

内外螺纹直角转接头

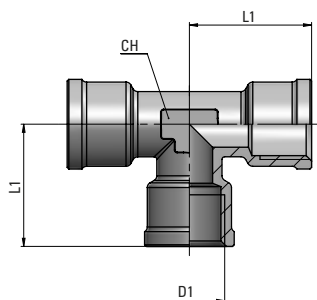
Male-Female Elbow



类型	D1	D2	L1	L2	L3	CH	g Δ
22 18 18	R1/8	G1/8	8	17	18.5	10	12.5
22 14 14	R1/4	G1/4	11	21.5	22.5	12	23.5
22 38 38	R3/8	G3/8	11.5	24.5	25.5	15	41
22 12 12	R1/2	G1/2	14	29.5	30	19	71
22 34 34	R3/4	G3/4	17	34.5	35.5	22	126
22 1" 1"	R1"	G1"	19	40.5	40.5	28	212

内螺纹三通转接头

Female Tee

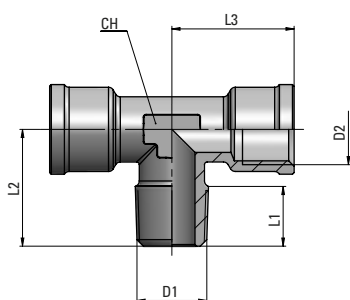


类型	D1	L1	CH	g Δ
23 18 18	G1/8	18.5	10	21
23 14 14	G1/4	22.5	12	36
23 38 38	G3/8	25.5	15	61
23 12 12	G1/2	30	19	98

RA 24

内外螺纹三通转接头

Male-Female Stud Tee

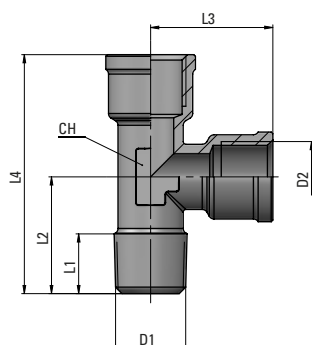


类型	D1	D2	L1	L2	L3	CH	g Δ
24 18 18	R1/8	G1/8	8	17	18.5	10	19
24 14 14	R1/4	G1/4	11	21.5	22.5	12	34
24 38 38	R3/8	G3/8	11.5	24.5	25.5	15	58
24 12 12	R1/2	G1/2	14	29.5	30	19	96
24 34 34	R3/4	G3/4	17	34.5	35.5	22	178
24 1" 1"	R1"	G1"	19	40.5	40.5	28	304

RA 25

直T型内外螺纹三通转接头

Male-Female, Lateral Tee

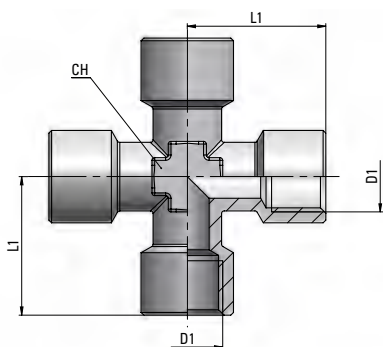


类型	D1	D2	L1	L2	L3	L4	CH	g Δ
25 18 18	R1/8	G1/8	8	17	18.5	35.5	10	19
25 14 14	R1/4	G1/4	11	21.5	22.5	44	12	34
25 38 38	R3/8	G3/8	11.5	24.5	25.5	50	15	57
25 12 12	R1/2	G1/2	14	29.5	30	59.5	19	96

RA 26

内螺纹十字接头

Female Cross

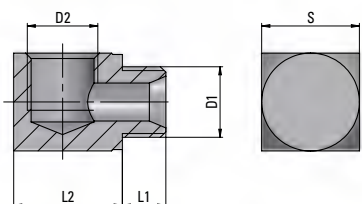


类型	D1	L1	CH	g $\Delta\Delta$
26 18 18	G1/8	21	10	41
26 14 14	G1/4	25.5	13	66
26 38 38	G3/8	28	17	112

RA 27

内外螺纹直角转接头

Male-Female Elbow

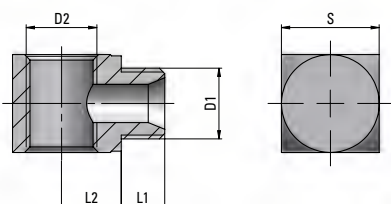


类型	D1	D2	L1	L2	S	g $\Delta\Delta$
27 M5 M5	M5x0.8	M5x0.8	5	10	9	6
27 18 18	G1/8	G1/8	6	14	13	14
27 14 14	G1/4	G1/4	8	20	18	40

RA 28

内外螺纹三通转接头

Male-Female Stud Tee

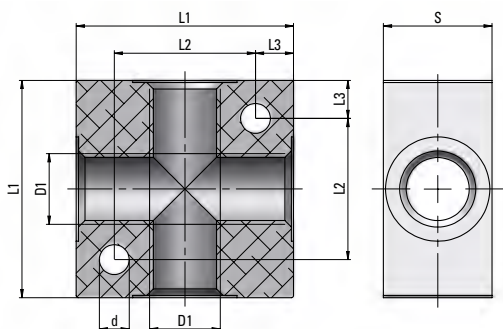


类型	D1	D2	L1	L2	S	g $\Delta\Delta$
28 M5 M5	M5x0.8	M5x0.8	5	5.5	9	5
28 18 18	G1/8	G1/8	6	7.5	13	6
28 14 14	G1/4	G1/4	8	11	18	36

RA 29

分路排

Manifold, 4 ways

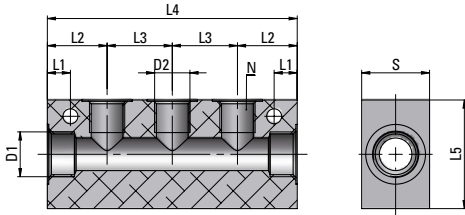


类型	D1	L1	L2	L3	d	S	g $\Delta\Delta$
29 00 18	G1/8	25	17	4	4.5	16	18
29 00 14	G1/4	40	26	7	5.5	20	64
29 00 38	G3/8	50	34	8	5.5	25	125
29 00 12	G1/2	50	34	8	5.5	30	138

RA 29 S

分路排

Manifold, Single



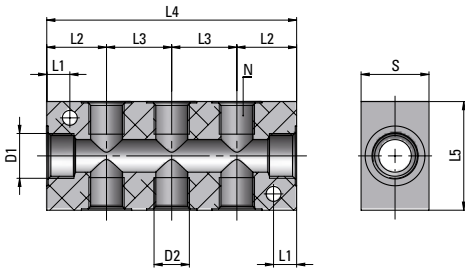
类型	D1	D2	N	L1	L2	L3	L4	L5	s	g Δ
29 14 18 S3	G1/4	G1/8	3	4.5	18	18	72	30	20	86
29 14 18 S4	G1/4	G1/8	4	4.5	18	18	90	30	20	110
29 14 18 S5	G1/4	G1/8	5	4.5	18	18	108	30	20	130
29 38 14 S3	G3/8	G1/4	3	8.5	22	24	92	40	25	184
29 38 14 S4	G3/8	G1/4	4	8.5	22	24	116	40	25	238
29 38 14 S5	G3/8	G1/4	5	8.5	22	24	140	40	25	298

无氧化铝本体 - Alu body, not anodized

RA 29 D

分路排

Manifold, Double



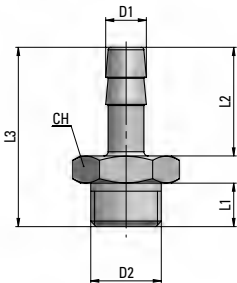
类型	D1	D2	N	L1	L2	L3	L4	L5	s	g Δ
29 14 18 D3	G1/4	G1/8	3+3	4.5	18	18	72	30	20	81
29 14 18 D4	G1/4	G1/8	4+4	4.5	18	18	90	30	20	100
29 14 18 D5	G1/4	G1/8	5+5	4.5	18	18	108	30	20	122
29 38 14 D3	G3/8	G1/4	3+3	8.5	22	24	92	40	25	170
29 38 14 D4	G3/8	G1/4	4+4	8.5	22	24	116	40	25	216
29 38 14 D5	G3/8	G1/4	5+5	8.5	22	24	140	40	25	266

无氧化铝本体 - Alu body, not anodized

RA 30

软管接头

Hose Connector

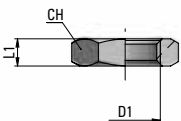


类型	D1	D2	L1	L2	L3	CH	g Δ
30 03 M5	3	M5x0.8	5	9	17	8	2
30 3.5 M5	3.5	M5x0.8	5	9	17	8	2
30 4.5 M5	4.5	M5x0.8	5	9	17	8	2
30 7.5 18	7.5	G1/8	6	20	30	14	10.5
30 7.5 14	7.5	G1/4	8	20	33	17	17
30 8.5 18	8.5	G1/8	6	20	30	14	11.5
30 9.5 18	9.5	G1/8	6	20	30	14	11
30 9.5 14	9.5	G1/4	8	20	33	17	18
30 9.5 38	9.5	G3/8	9	20	34	19	22
30 12.5 14	12.5	G1/4	8	22	33	17	21
30 12.5 38	12.5	G3/8	9	22	34	19	24
30 12.5 12	12.5	G1/2	10	22	38	24	38
30 17.5 38	17.5	G3/8	9	24	38	19	38
30 17.5 12	17.5	G1/2	10	24	39.5	24	43

RA 31

螺母

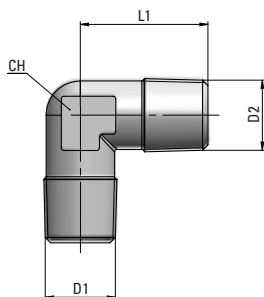
Nut



类型	D1	L1	CH	g Δ
31 00 18	G1/8	4.5	14	4
31 00 14	G1/4	5	17	5
31 00 38	G3/8	5.5	19	5
31 00 12	G1/2	6	24	8
31 00 M10x1	M10x1	4	14	3
31 00 M12x1	M12x1	5	16	5
31 00 M14x1	M14x1	5	18	5.5
31 00 M16x1	M16x1	5	20	6
31 00 M20x1.5	M20x1.5	4	27	10.5

RA 35

锥外螺纹弯头

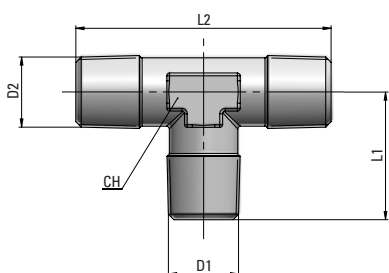


Male-Male Elbow

类型	D1	D2	L1	CH	g $\Delta\Delta$
35 18 18	R1/8	R1/8	17	10	10.5
35 14 14	R1/4	R1/4	21.5	12	21
35 38 38	R3/8	R3/8	24.5	15	37
35 12 12	R1/2	R1/2	29.5	19	68.5
35 34 34	R3/4	R3/4	34.5	22	100
35 1" 1"	R1"	R1"	40.5	28	174

RA 36

锥外螺纹正T接头

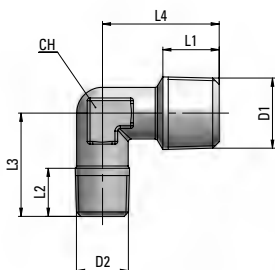


Male Tee

类型	D1	D2	L1	L2	CH	g $\Delta\Delta$
36 18 18	R1/8	R1/8	17	34	10	14
36 14 14	R1/4	R1/4	21.5	43	12	29
36 38 38	R3/8	R3/8	24.5	49	15	51
36 12 12	R1/2	R1/2	29.5	59	19	92.5
36 34 34	R3/4	R3/4	34.5	69	22	134
36 1" 1"	R1"	R1"	40.5	81	28	236

RA 38

外螺纹减径弯头

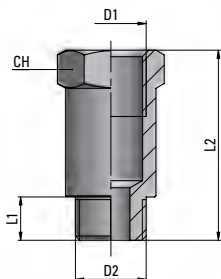


Elbow Reduction Male-Male

类型	D1	D2	L1	L2	L3	L4	CH	g $\Delta\Delta$
38 18 14	R1/4	R1/8	11	8	19	21.5	10	17

RA 39

加长型内外转接头

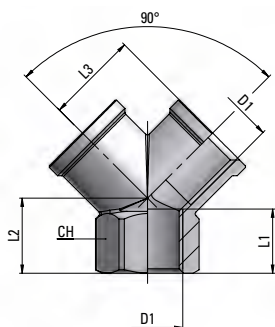


Extention Male-Female

类型	D1	D2	L1	L2	CH	g $\Delta\Delta$
39 18 22	G1/8	G1/8	6	22	14	15
39 18 42	G1/8	G1/8	6	42	14	30
39 14 35	G1/4	G1/4	8	35	17	32
39 14 51	G1/4	G1/4	8	51	17	46

RA 40

内螺纹Y型接头

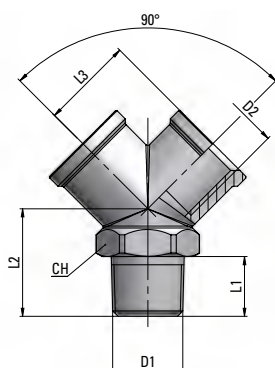


Female Y

类型	D1	L1	L2	L3	CH	g Δ
40 00 18	G1/8	8	12	14	13	18
40 00 14	G1/4	11	14	17	17	33
40 00 38	G3/8	11.5	16	19	20	44
40 00 12	G1/2	14	19	24.5	25	93

RA 41

内外螺纹Y型接头

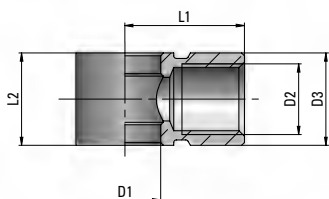


Male Female Y

类型	D1	D2	L1	L2	L3	CH	g Δ
41 00 18	R1/8	G1/8	8	16	14	13	22
41 00 14	R1/4	G1/4	11	20	17	17	38
41 00 38	R3/8	G3/8	11.5	22	19	20	53
41 00 12	R1/2	G1/2	14	27	24.5	25	108

RA 42

铰接接头本体



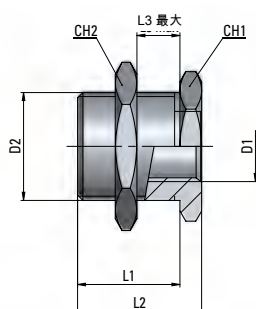
Single Banjo Ring

类型	D1	D2	D3	L1	L2	g Δ
42 00 M5	5.1	M5x0.8	9	11.5	10	7
42 00 M5/R	7	M5x0.8	9	11.5	10	6
42 00 18	10	G1/8	14	16	15	15
42 00 14	13.2	G1/4	17	22	17	25
42 00 38	17	G3/8	20	26	20	40
42 00 12	21	G1/2	26	32	24	66

/R = 仅用于流量调节器 - For flow controls only

RA 44

穿板接头



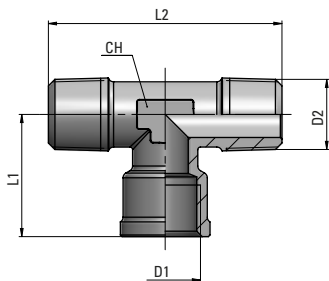
Bulkhead Connector

类型	D1	D2	L1	L2	L3 最大	CH1	CH2	g Δ
44 00 M5	M5x0.5	M10x1	10.5	14	7	14	14	12
44 00 18	G1/8	M16x1.5	14	18	8	19	22	29
44 00 14	G1/4	M20x1.5	20	24	13	24	27	48
44 00 38	G3/8	M26x1.5	21	26	13	30	32	91
44 00 12	G1/2	M28x1.5	27	33	19	32	36	112

RA 45

内外螺纹正T型转接头

Male-Female-Male Tee

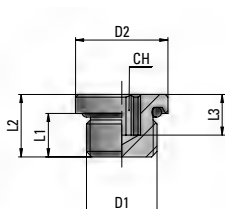


类型	D1	D2	L1	L2	CH	g	Δ
45 18 18	G1/8	R1/8	18.5	34	10	16.5	
45 14 14	G1/4	R1/4	22.5	43	12	31	
45 38 38	G3/8	R3/8	25.5	49	15	54	
45 12 12	G1/2	R1/2	30	60	19	95.5	

RA 46

带O型圈外丝

Male Plug with ORing

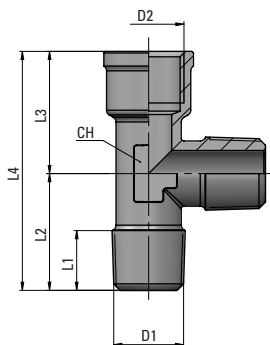


类型	D1	D2	L1	L2	L3	CH	g	Δ
46 00 18	G1/8	14	6.5	9.5	5.5	5	5.5	
46 00 14	G1/4	17	8	11.5	6.5	6	11	
46 00 38	G3/8	20	9	12.5	6	8	18.5	
46 00 12	G1/2	26	10	14	7	10	33	

RA 47

内外螺纹直T型转接头

Male-Female-Male Tee

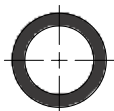
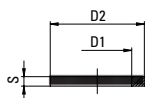


类型	D1	D2	L1	L2	L3	L4	CH	g	Δ
47 18 18	R1/8	G1/8	8	17	18.5	35.5	10	16.5	
47 14 14	R1/4	G1/4	11	21.5	22.5	44	12	31	
47 38 38	R3/8	G3/8	11.5	24.5	25.5	50	15	54	
47 12 12	R1/2	G1/2	14	29.5	30	59.5	19	95	

RA 94

PA6塑料垫圈

PA6 Sealing Ring

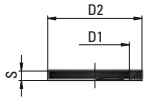


类型	D1	D2	S	g	Δ
94 00 M5	5	8	1.2	0.08	
94 00 18	9.9	13.9	1.8	0.19	
94 00 14	13.1	17.9	1.8	0.28	
94 00 38	16.8	21.4	1.8	0.31	
94 00 12	21	25.4	2	0.42	

RA 95

PA6塑料垫圈

PA6 Toothed Sealing Ring

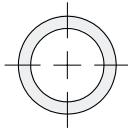
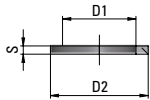


类型	D1	D2	S	g Δ
95 00 M5	5	8	1.2	0.08
95 00 18	9.9	13.9	1.8	0.19
95 00 14	13.1	17.9	1.8	0.28
95 00 38	16.8	21.4	1.8	0.31
95 00 12	21	25.4	2	0.42

RA 96

铝密封垫圈

Aluminium Sealing Washer

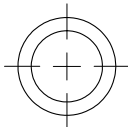
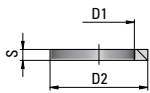


类型	D1	D2	S	g Δ
96 00 M5	5.2	9	1	0.1
96 00 18	10.3	14	1.5	0.25
96 00 14	13.5	18	1.5	0.42
96 00 38	17	22	1.5	0.54
96 00 12	21.5	27	1.5	0.77

RA 97

PTFE密封垫圈

PTFE Sealing Ring

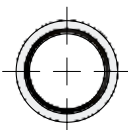
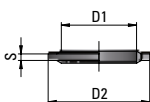


类型	D1	D2	S	g Δ
97 00 18	9.9	14	2	0.25
97 00 14	13.1	18	2	0.42
97 00 38	16.8	21.5	2	0.58
97 00 12	21	25.5	2	0.75

RA 98

合成密封圈

Bonded Seal

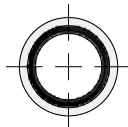
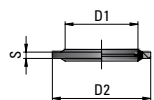


类型	D1	D2	S	g Δ
98 00 18	10.4	14.7	1.2	0.6
98 00 14	13.85	18.7	1.2	0.77
98 00 38	17.35	22.7	1.2	1.10
98 00 12	21.65	26.7	1.2	1.20
98 00 34	27.3	32.6	1.2	1.50

RA 99

同轴合成密封垫圈

Bonded Seal, self centering



类型	D1	D2	S	g Δ
99 00 M5	5.7	9	1	0.24
99 00 18	10.37	15.88	2	1.59
99 00 14	13.74	20.57	2	2.66
99 00 38	17.28	23.80	2	3
99 00 12	21.54	28.58	2.5	4.57
99 00 34	27.05	34.93	2.5	6.80