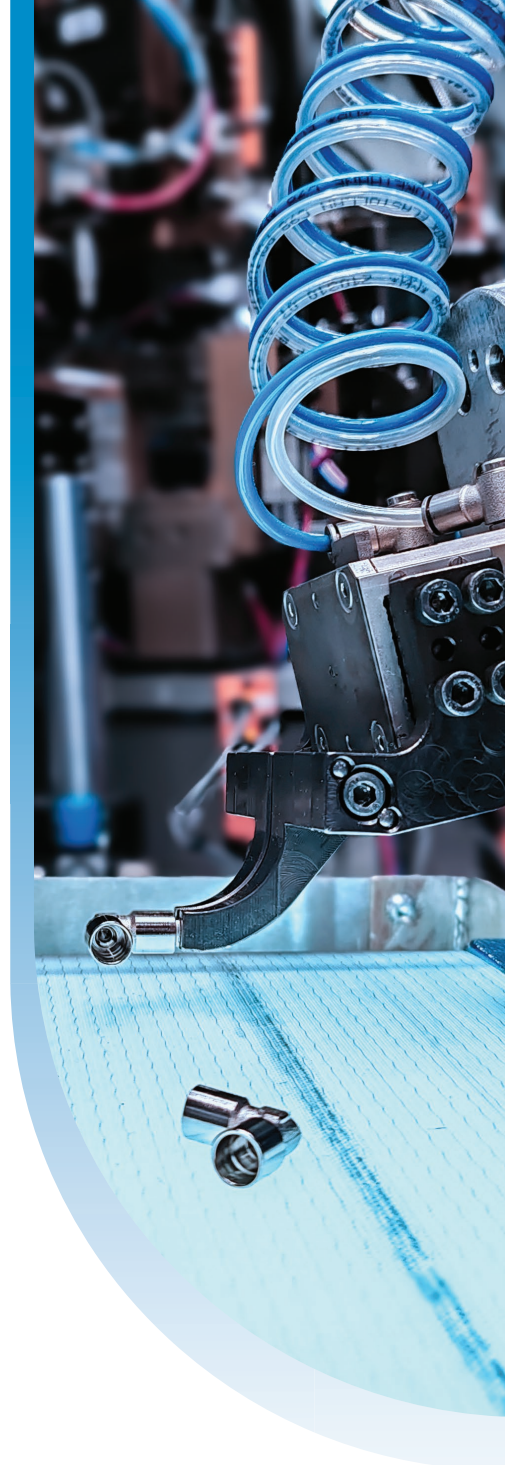


cmatic[®]
PNEUMATIC FITTINGS



GU Safety

CN

安全型快换接头
符合ISO4414的安全型快换接头



EN

Safety Couplings

Safety quick couplings compliant with ISO 4414

GU 41

安全型按钮式快换接头, ISO 6150 C-10外形

Push-Button safety coupling according to ISO 6150 C-10

1 本体 Body 阳极氧化铝 Al2011 Anodized aluminium Al2011	2 阀芯 Valve 黄铜 UNI EN 12164 CW614N Brass UNI EN 12164 CW614N	3 螺纹 Thread 黄铜镀镍 UNI EN 12164 CW614N Brass UNI EN 12164 CW614N, nickel plated	4 按钮 Button 硬化镀锌钢 11SMnPb37 Hardened, zinc plated steel 11SMnPb37	5 密封圈 Seals NBR NBR	6 弹簧 Springs AISI 302 不锈钢 Stainless steel AISI 302	i 插头体 Plugs 硬化镀锌钢 11SMnPb37 Hardened, zinc plated steel 11SMnPb37
---	--	--	--	------------------------------	---	--



-20° ÷ 80°C



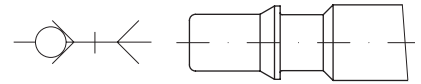
12 bar



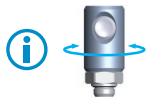
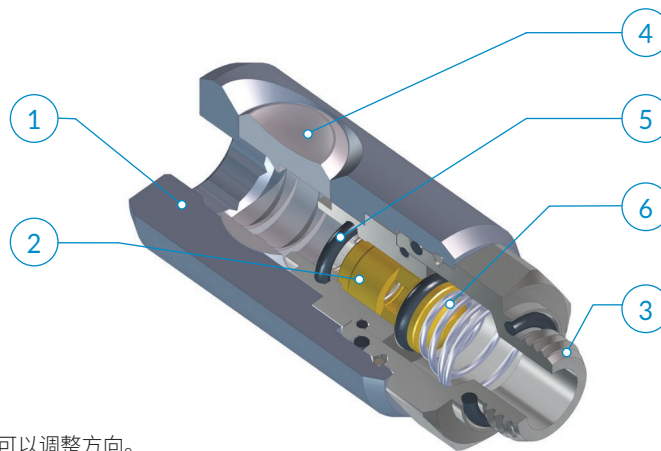
5,5 mm



680 NI/min
(6 bar - Δp = 1bar)



ISO 6150 C-10外形
ISO 6150 C-10 Profile



快换接头在安装后依然可以调整方向。
The Coupling will remain swivelling after installation

应用领域:
气动系统

Application fields:
Pneumatic circuits

i 连接 - 断开

将插头体插入接头体

断开连接, 需依照以下指导步骤:
插头体已经插入接头体

1

按压按钮, 排出下游回路中的空气, 此时, 插头体依旧锁定接头体

2

再次按压按钮, 完成插头体的分离。

CONNECTION - RELEASE

Insert the plug into the Coupling.

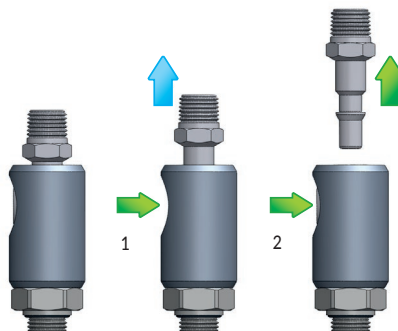
To disconnect the plug follow instructions below:
Plug inserted in Coupling.

1

Press the button once to vent the downstream air from the circuit; at this time the plug is still captive in the Coupling.

2

Press the button one more time to release the plug.

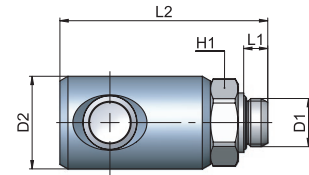


GU 41-10

外螺纹接头体

Male coupling

类型	D1	D2	L1	L2	H1	g Δ
10 00 14	G1/4	25	6,5	56,1	21	80,5
10 00 38	G3/8	25	7	56,1	21	90,0
10 00 12	G1/2	25	8,5	58,6	25	115,1

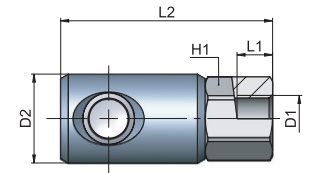


GU 41-12

内螺纹接头体

Female coupling

类型	D1	D2	L1	L2	H1	g Δ
12 00 14	G1/4	25	9	59,6	21	97,4
12 00 38	G3/8	25	10	61,6	21	97,5
12 00 12	G1/2	25	11	63,6	24	116,6

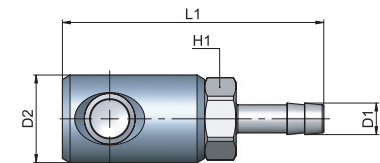


GU 41-13

软管用接头体

Coupling with hose connection

类型	ID1	D1	D2	L2	H1	g Δ
13 06 00	6	7	25	74,6	21	82,5
13 08 00	8	9	25	74,6	21	86,3
13 10 00	10	11	25	74,6	21	87,0

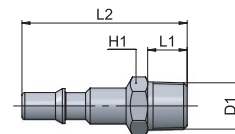


GU 41-20

外螺纹插头体

Male plug

类型	D1	L1	L2	H1	g Δ
20 00 14	R1/4	11	46	14	18,0
20 00 38	R3/8	11,5	46,5	17	23,4
20 00 12	R1/2	14	49	22	36,5

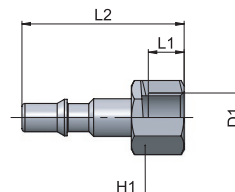


GU 41-21

内螺纹插头体

Female plug

类型	D1	L1	L2	H1	g Δ
21 00 14	G1/4	9,5	43	17	23,0
21 00 38	G3/8	10,5	45	20	29,0
21 00 12	G1/2	11	47	24	41,0

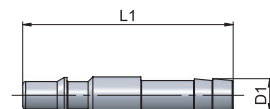


GU 41-22

软管用插头体

Plug with hose connection

类型	ID1	D1	L1	g Δ
22 06 00	6	7	57	12,3
22 08 00	8	9	57	14,7
22 10 00	10	11	57	20,5



GU 42

安全型按钮式快换接头, ISO 6150 B-12外形

Push-button safety coupling according to ISO 6150 B-12

- | | | | | | | |
|---|---|--|---|---|--|--|
| <p>1 本体
Body</p> <p>阳极氧化铝 Al2011
Anodized aluminium Al2011</p> | <p>2 按钮、阀芯和排气孔
Button, valve and venting ring</p> <p>硬化镀锌钢 11SMnPb37
Hardened, zinc plated steel 11SMnPb37</p> | <p>3 螺纹
Thread</p> <p>黄铜镀镍 UNI EN 12164 CW614N
Brass UNI EN 12164 CW614N, nickel plated</p> | <p>4 弹簧
Springs</p> <p>AISI 302 不锈钢
Stainless steel AISI 302</p> | <p>5 滚珠
Balls</p> <p>AISI 420 不锈钢
Stainless steel AISI 420</p> | <p>6 密封圈
Seals</p> <p>NBR
NBR</p> | <p>i 插头体
Plugs</p> <p>硬化镀锌钢 11SMnPb37
Hardened, zinc plated steel 11SMnPb37</p> |
|---|---|--|---|---|--|--|



-20° ÷ 80°C



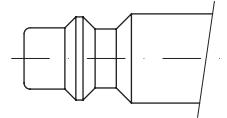
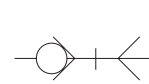
16 bar



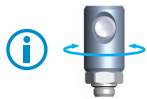
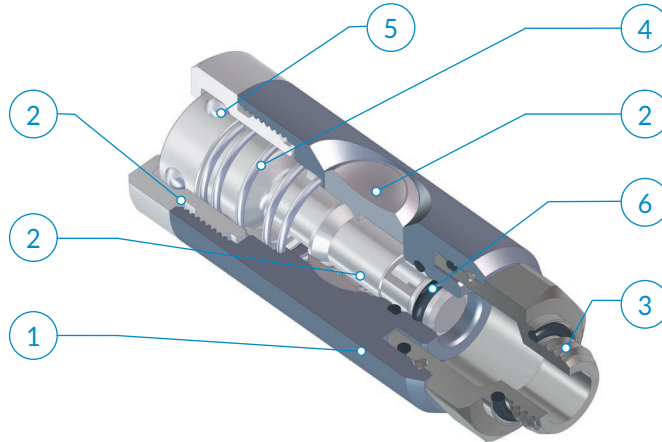
5,5 mm



780 NI/min
(6 bar - Δp = 1bar)



ISO 6150 B-12形状
ISO 6150 B-12 Profile



快换接头在安装后依然可以调整方向。
The Coupling will remain swivelling after installation

应用领域：
气动系统

Application fields:
Pneumatic circuits

i 连接 - 断开

将插头体插入接头体

断开连接，需依照以下指导步骤：
插头体已经插入接头体

1

按压按钮，排出下游回路中的空气，此时，插头体依旧锁定接头体

2

再次按压按钮，完成插头体的分离。

CONNECTION - RELEASE

Insert the plug into the Coupling.

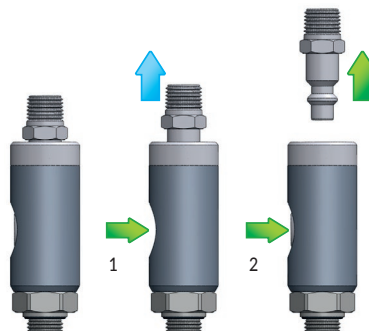
To disconnect the plug follow instructions below:
Plug inserted in Coupling.

1

Press the button once to vent the downstream air from the circuit; at this time the plug is still captive in the Coupling.

2

Press the button one more time to release the plug.

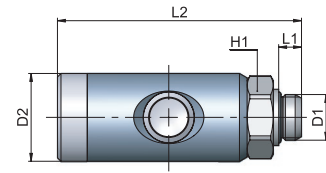


GU 42-10

外螺纹接头体

Male coupling

类型	D1	D2	L1	L2	H1	g Δ
10 00 14	G1/4	25	6,5	69,5	21	115,0
10 00 38	G3/8	25	7	69,5	21	108,0
10 00 12	G1/2	25	8,5	72	25	137,2

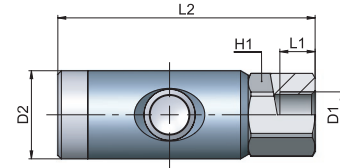


GU 42-12

内螺纹接头体

Female coupling

类型	D1	D2	L1	L2	H1	g Δ
12 00 14	G1/4	25	9	73	21	134,1
12 00 38	G3/8	25	10	75	21	131,0
12 00 12	G1/2	25	11	77	24	139,0

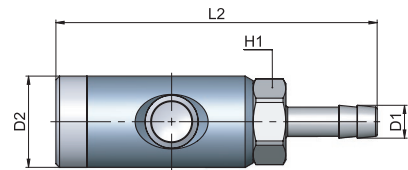


GU 42-13

软管用接头体

Coupling with hose connection

类型	ID1	D1	D2	L2	H1	g Δ
13 06 00	6	7	25	88	21	106,2
13 08 00	8	9	25	88	21	108,0
13 10 00	10	11	25	88	21	109,7

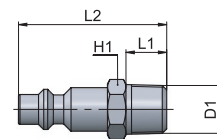


GU 42-20

外螺纹插头体

Male plug

类型	D1	L1	L2	H1	g Δ
20 00 14	R1/4	11	40	14	20,0
20 00 38	R3/8	11,5	41,5	17	26,0
20 00 12	R1/2	14	44	22	40,0

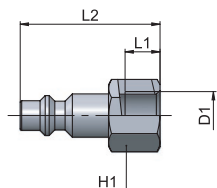


GU 42-21

内螺纹插头体

Female plug

类型	D1	L1	L2	H1	g Δ
21 00 14	G1/4	9,5	38	17	25,0
21 00 38	G3/8	10,5	40	20	31,5
21 00 12	G1/2	11	42	24	43,5



GU 43

安全型按钮式快换接头，ISO 6150 C-14外形

Push-button safety coupling according to ISO 6150 C-14

1 本体 Body 阳极氧化铝Al2011 Anodized aluminium Al2011	2 阀芯 Valve 黄铜UNI EN 12164 CW614N Brass UNI EN 12164 CW614N	3 螺纹 Thread 黄铜镀镍UNI EN 12164 CW614N Brass UNI EN 12164 CW614N, nickel plated	4 按钮 Button 硬化镀锌钢11SMnPb37 Hardened, zinc plated steel 11SMnPb37	5 密封圈 Seals NBR NBR	6 弹簧 Springs AISI 302不锈钢 Stainless steel AISI 302	i 插头体 Plugs 硬化镀锌钢11SMnPb37 Hardened, zinc plated steel 11SMnPb37
--	---	---	---	------------------------------	--	---



-20° ÷ 80°C



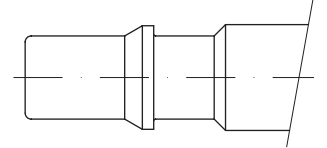
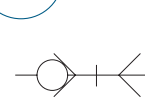
10 bar



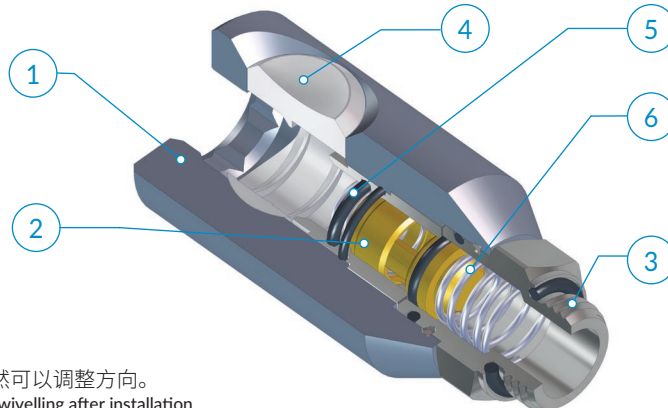
8 mm



1460 NI/min
(6 bar - Δp = 1bar)



ISO 6150 C-14外形
ISO 6150 C-14 Profile



快换接头在安装后依然可以调整方向。
The Coupling will remain swivelling after installation

应用领域：
气动系统

Application fields:
Pneumatic circuits

i 连接 - 断开

将插头体插入接头体

断开连接，需依照以下指导步骤：
插头体已经插入接头体

1

按压按钮，排出下游回路中的空气，此时，插头体依旧锁定接头体

2

再次按压按钮，完成插头体的分离。

CONNECTION - RELEASE

Insert the plug into the Coupling.

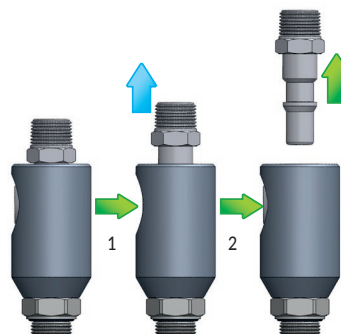
To disconnect the plug follow instructions below:
Plug inserted in Coupling.

1

Press the button once to vent the downstream air from the circuit; at this time the plug is still captive in the Coupling.

2

Press the button one more time to release the plug.

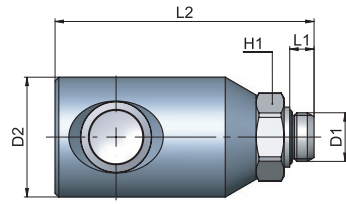


GU 43-10

外螺纹接头体

Male coupling

类型	D1	D2	L1	L2	H1	g Δ
10 00 14	G1/4	32	6,5	69,2	21	144,7
10 00 38	G3/8	32	7	69,2	21	150,0
10 00 12	G1/2	32	8,5	71,7	25	173,5

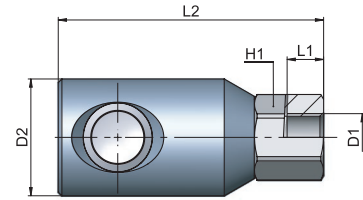


GU 43-12

内螺纹接头体

Female coupling

类型	D1	D2	L1	L2	H1	g Δ
12 00 14	G1/4	32	9	72,7	21	167,6
12 00 38	G3/8	32	10	75	21	163,7
12 00 12	G1/2	32	11	77	24	176,3

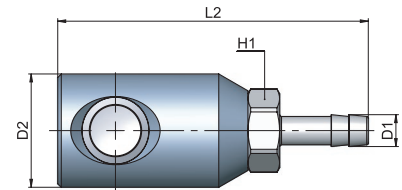


GU 43-13

软管用接头体

Coupling with hose connection

类型	ID1	D1	D2	L2	H1	g Δ
13 08 00	8	9	32	88	21	148,3
13 10 00	10	11	32	88	21	149,8
13 13 00	13	14	32	88	21	154,9

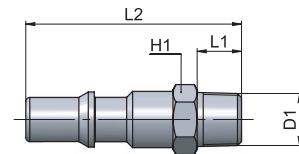


GU 43-20

外螺纹插头体

Male plug

类型	D1	L1	L2	H1	g Δ
20 00 14	R1/4	11	46	14	32,0
20 00 38	R3/8	11,5	46,5	17	35,5
20 00 12	R1/2	14	49	22	51,0

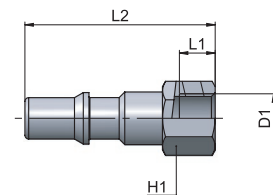


GU 43-21

内螺纹插头体

Female plug

类型	D1	L1	L2	H1	g Δ
21 00 14	G1/4	9,5	50,5	17	35,0
21 00 38	G3/8	10,5	52,5	20	42,0
21 00 12	G1/2	11	54,5	24	53,0

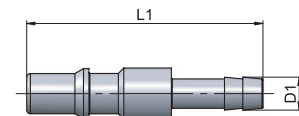


GU 43-22

软管用插头体

Plug with hose connection

类型	ID1	D1	L1	g Δ
22 08 00	8	9	64,5	26,5
22 10 00	10	11	64,5	27,0
22 13 00	13	14	64,5	39,0



AP 55
AR 63
AV 221
CO 157
CX 255
EV 217
GU 119
GU Safety 135
GX 281
GX Safety 291
HP 317
MA 27
MB 41
MC 83
MF 235
MM 333
MO 93
MP 323
MT 339
MV 171
MX 241
MY 229
OX 261
PA 113
PE 79
PM 329
PN 67
PT 347
PU 131
PU Safety 149
PUX 287
PV 203
PVX 311
PX 249
QO 363
RA 101
RF 269
RT 355
RX 275
Tools 369
Tubings 375
VF 295
VT 359
VX 299

GU 44

安全型按钮式快换接头，ISO 6150 B-15外形

Push-button safety coupling according to ISO 6150 B-15

- | | | | | | | |
|--|--|---|---|---|--|---|
| <p>1 本体
Body</p> <p>阳极氧化铝Al2011
Anodized aluminium Al2011</p> | <p>2 按钮、阀芯和排气孔
Button, valve and venting ring</p> <p>硬化镀锌钢11SMnPb37
Hardened, zinc plated steel 11SMnPb37</p> | <p>3 螺纹
Thread</p> <p>黄铜镀镍UNI EN 12164 CW614N
Brass UNI EN 12164 CW614N, nickel plated</p> | <p>4 弹簧
Springs</p> <p>AISI 302 不锈钢
Stainless steel AISI 302</p> | <p>5 滚珠
Balls</p> <p>AISI 420 不锈钢
Stainless steel AISI 420</p> | <p>6 密封圈
Seals</p> <p>NBR
NBR</p> | <p>i 插头体
Plugs</p> <p>硬化镀锌钢11SMnPb37
Hardened, zinc plated steel 11SMnPb37</p> |
|--|--|---|---|---|--|---|



-20° ÷ 80°C



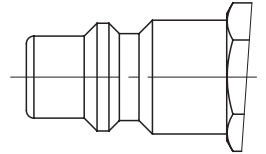
12 bar



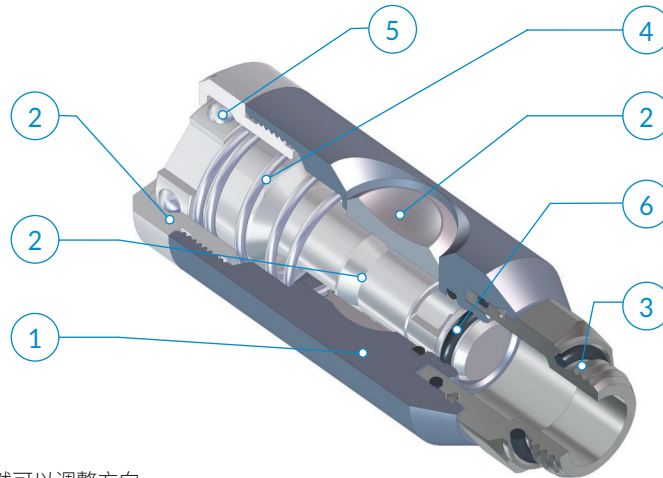
8 mm



1650 NI/min
(6 bar - Δp = 1bar)



ISO 6150 B-15外形
ISO 6150 B-15 Profile



快换接头在安装后依然可以调整方向。
The Coupling will remain swivelling after installation

应用领域：
气动系统

Application fields:
Pneumatic circuits

i 连接 - 断开

将插头体插入接头体

断开连接，需依照以下指导步骤：
插头体已经插入接头体

1

按压按钮，排出下游回路中的空气，此时，插头体依旧锁定接头体

2

再次按压按钮，完成插头体的分离。

CONNECTION - RELEASE

Insert the plug into the Coupling.

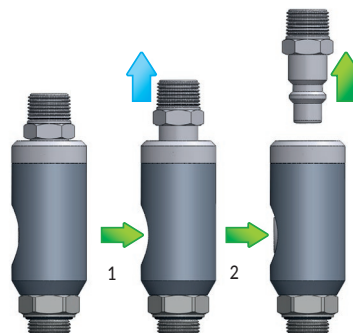
To disconnect the plug follow instructions below:
Plug inserted in Coupling.

1

Press the button once to vent the downstream air from the circuit; at this time the plug is still captive in the Coupling.

2

Press the button one more time to release the plug.

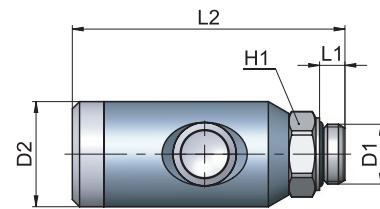


GU 44-10

外螺纹接头体

Male coupling

类型	D1	D2	L1	L2	H1	g Δ
10 00 38	G3/8	29	7	75,2	21	148,7
10 00 12	G1/2	29	8,5	77,7	25	170,0

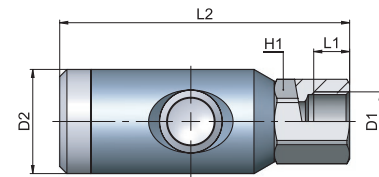


GU 44-12

内螺纹接头体

Female coupling

类型	D1	D2	L1	L2	H1	g Δ
12 00 38	G3/8	29	10	80,7	21	163,1
12 00 12	G1/2	29	11	82,7	24	175,4

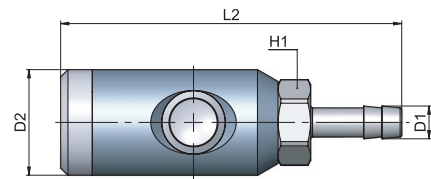


GU 44-13

软管用接头体

Coupling with hose connection

类型	ID1	D1	D2	L2	H1	g Δ
13 08 00	8	9	29	93,7	21	152,9
13 10 00	10	11	29	93,7	21	154,0
13 13 00	13	14	29	93,7	21	160,0

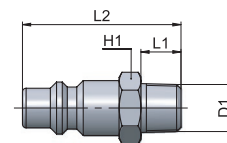


GU 44-20

外螺纹插头体

Male plug

类型	D1	L1	L2	H1	g Δ
20 00 14	R1/4	11	43,5	17	32,3
20 00 38	R3/8	11,5	44	17	32,9
20 00 12	R1/2	14	46,5	22	47,0

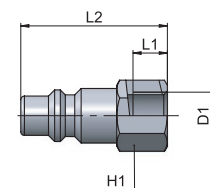


GU 44-21

内螺纹插头体

Female plug

类型	D1	D2	L1	H1	g Δ
21 00 14	G1/4	9,5	40,5	17	32,5
21 00 38	G3/8	10,5	42,5	20	38,3
21 00 12	G1/2	11	44,5	24	51,3



AP 55
AR 63
AV 221
CO 157
CX 255
EV 217
GU 119
GU Safety 135
GX 281
GX Safety 291
HP 317
MA 27
MB 41
MC 83
MF 235
MM 333
MO 93
MP 323
MT 339
MV 171
MX 241
MY 229
OX 261
PA 113
PE 79
PM 329
PN 67
PT 347
PU 131
PU Safety 149
PUX 287
PV 203
PVX 311
PX 249
QO 363
RA 101
RF 269
RT 355
RX 275
Tools 369
Tubings 375
VF 295
VT 359
VX 299

GU 45

安全型按钮式快换接头，ARO 210外形

Push-button safety coupling according to ARO 210

- | | | | | | | |
|---|---|--|---|---|--|--|
| <p>1 本体
Body</p> <p>阳极氧化铝 Al2011
Anodized aluminium Al2011</p> | <p>2 按钮、阀芯和排气孔
Button, valve and venting ring</p> <p>硬化镀锌钢 11SMnPb37
Hardened, zinc plated steel 11SMnPb37</p> | <p>3 螺纹
Thread</p> <p>黄铜镀镍 UNI EN 12164 CW614N
Brass UNI EN 12164 CW614N, nickel plated</p> | <p>4 弹簧
Springs</p> <p>AISI 302 不锈钢
Stainless steel AISI 302</p> | <p>5 滚珠
Balls</p> <p>AISI 420 不锈钢
Stainless steel AISI 420</p> | <p>6 密封圈
Seals</p> <p>NBR
NBR</p> | <p>i 插头体
Plugs</p> <p>钢镀镍 11SMnPb37
Nickel plated steel 11SMnPb37</p> |
|---|---|--|---|---|--|--|



-20° ÷ 80°C



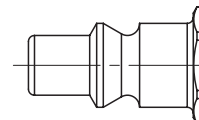
12 bar



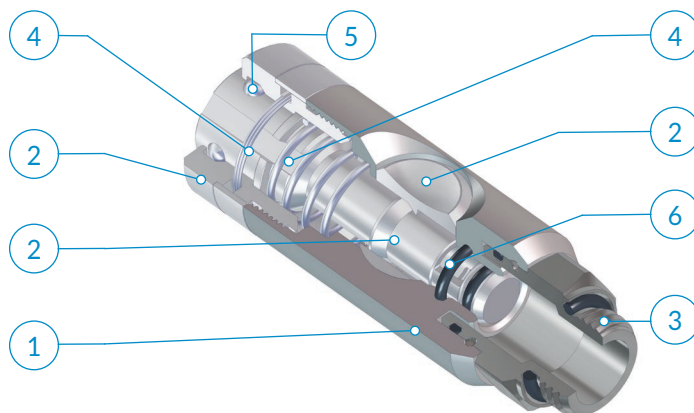
5,5 mm



1080 NI/min
(6 bar - Δp = 1bar)



ARO 210外形
ARO 210 Profile



快换接头在安装后依然可以调整方向。
The Coupling will remain swivelling after installation

应用领域：
气动系统

Application fields:
Pneumatic circuits

i 连接 - 断开

将插头体插入接头体

断开连接，需依照以下指导步骤：
插头体已经插入接头体

1

按压按钮，排出下游回路中的空气，此时，插头体依旧锁定接头体

2

再次按压按钮，完成插头体的分离。

CONNECTION - RELEASE

Insert the plug into the Coupling.

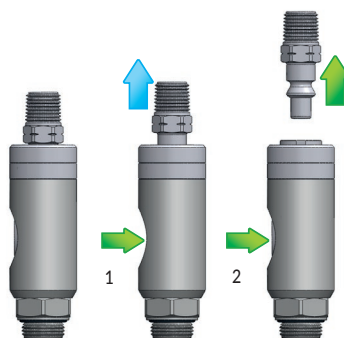
To disconnect the plug follow instructions below:
Plug inserted in Coupling.

1

Press the button once to vent the downstream air from the circuit; at this time the plug is still captive in the Coupling.

2

Press the button one more time to release the plug.



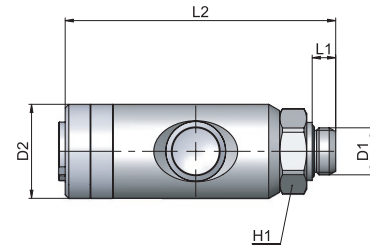
AP 55
AR 63
AV 221
CO 157
CX 255
EV 217
GU 119
GU Safety 135
GX 281
GX Safety 291
HP 317
MA 27
MB 41
MC 83
MF 235
MM 333
MO 93
MP 323
MT 339
MV 171
MX 241
MY 229
OX 261
PA 113
PE 79
PM 329
PN 67
PT 347
PU 131
PU Safety 149
PUX 287
PV 203
PVX 311
PX 249
QO 363
RA 101
RF 269
RT 355
RX 275
Tools 369
Tubings 375
VF 295
VT 359
VX 299

GU 45-10

外螺纹接头体

Male coupling

类型	D1	D2	L1	L2	H1	g Δ
10 00 14	G1/4	26	6,5	74,8	21	139,4
10 00 38	G3/8	26	7	74,8	21	140,7
10 00 12	G1/2	26	8,5	77,3	25	161,9

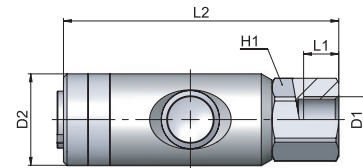


GU 45-12

内螺纹接头体

Female coupling

类型	D1	D2	L1	L2	H1	g Δ
12 00 14	G1/4	26	9	78,3	21	162,5
12 00 38	G3/8	26	10	80,3	21	156,4
12 00 12	G1/2	26	11	82,3	24	166,6

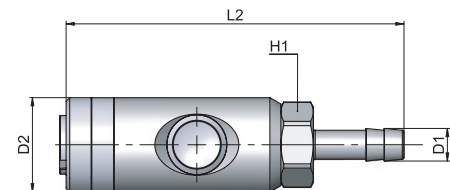


GU 45-13

软管用接头体

Coupling with hose connection

类型	ID1	D1	D2	L2	H1	g Δ
13 06 00	6	7	26	93,3	21	142,1
13 08 00	8	9	26	93,3	21	144,2
13 09 00	9	10	26	93,3	21	145,3
13 10 00	10	11	26	93,3	21	146,1
13 13 00	13	14	26	93,3	21	154,8

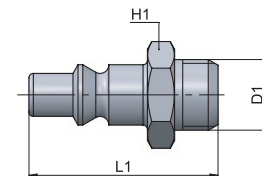


GU 45-20

外螺纹插头体

Male plug

类型	D1	L1	H1	g Δ
20 00 14	G1/4	36	14	17,1
20 00 38	G3/8	40	17	23,5
20 00 12	G1/2	39,5	24	41,3

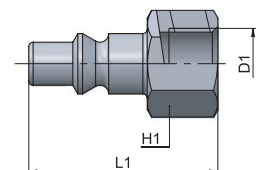


GU 45-21

内螺纹插头体

Female plug

类型	D1	L1	H1	g Δ
21 00 14	G1/4	37	16	19,0
21 00 38	G3/8	40	19	25,3
21 00 12	G1/2	43,5	25	50,4



GU 46

安全型按钮式快换接头，欧洲外形

Push-button safety coupling according european profile

- | | | | | | | |
|---|---|--|---|---|--|--|
| <p>1 本体
Body</p> <p>阳极氧化铝 Al2011
Anodized aluminium Al2011</p> | <p>2 按钮、阀芯和排气孔
Button, valve and venting ring</p> <p>硬化镀锌钢 11SMnPb37
Hardened, zinc plated steel 11SMnPb37</p> | <p>3 螺纹
Thread</p> <p>黄铜镀镍 UNI EN 12164 CW614N
Brass UNI EN 12164 CW614N, nickel plated</p> | <p>4 弹簧
Springs</p> <p>AISI 302 不锈钢
Stainless steel AISI 302</p> | <p>5 滚珠
Balls</p> <p>AISI 420 不锈钢
Stainless steel AISI 420</p> | <p>6 密封圈
Seals</p> <p>NBR
NBR</p> | <p>i 插头体
Plugs</p> <p>硬化镀锌钢 11SMnPb37
Hardened, zinc plated steel 11SMnPb37</p> |
|---|---|--|---|---|--|--|



-20° ÷ 80°C



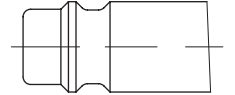
12 bar



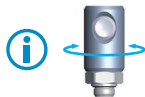
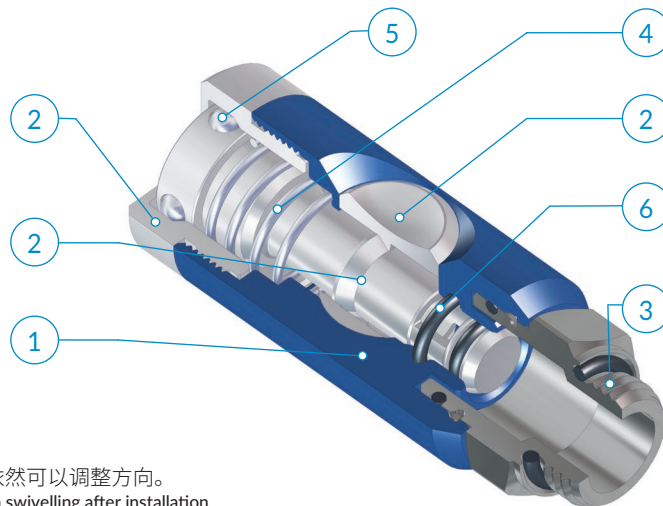
7,4 mm



1500 NI/min
(6 bar - Δp = 1bar)



欧洲外形
European Profile



快换接头在安装后依然可以调整方向。
The Coupling will remain swivelling after installation

应用领域：
气动系统

Application fields:
Pneumatic circuits

i 连接 - 断开

将插头体插入接头体

断开连接，需依照以下指导步骤：
插头体已经插入接头体

1

按压按钮，排出下游回路中的空气，此时，插头体依旧锁定接头体

2

再次按压按钮，完成插头体的分离。

CONNECTION - RELEASE

Insert the plug into the Coupling.

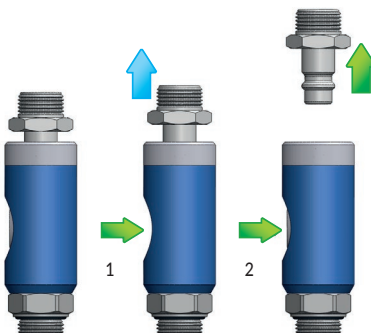
To disconnect the plug follow instructions below:
Plug inserted in Coupling.

1

Press the button once to vent the downstream air from the circuit; at this time the plug is still captive in the Coupling.

2

Press the button one more time to release the plug.

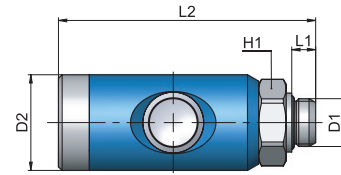


GU 46-10

外螺纹接头体

Male Coupling

类型	D1	D2	L1	L2	H1	g Δ
10 00 14	G1/4	26	6,5	69,9	21	124,0
10 00 38	G3/8	26	7	69,9	21	125,1
10 00 12	G1/2	26	8,5	72,4	25	144,5

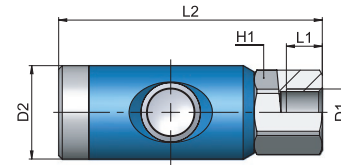


GU 46-12

内螺纹接头体

Female coupling

类型	D1	D2	L1	L2	H1	g Δ
12 00 14	G1/4	26	9	73,4	21	144,1
12 00 38	G3/8	26	10	75,4	21	140,0
12 00 12	G1/2	26	11	77,4	24	150,8

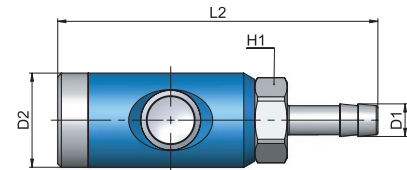


GU 46-13

软管用接头体

Coupling with hose connection

类型	ID1	D1	D2	L2	H1	g Δ
13 06 00	6	7	26	88,4	21	128,0
13 08 00	8	9	26	88,4	21	129,4
13 09 00	9	10	26	88,4	21	130,6
13 10 00	10	11	26	88,4	21	130,0
13 13 00	13	14	26	88,4	21	137,8



i 更多插头体信息，请参看GU26相关部分。
For further info on the plugs to use, please revert to the GU26 section.

AP	55
AR	63
AV	221
CO	157
CX	255
EV	217
GU	119
GU Safety	135
GX	281
GX Safety	291
HP	317
MA	27
MB	41
MC	83
MF	235
MM	333
MO	93
MP	323
MT	339
MV	171
MX	241
MY	229
OX	261
PA	113
PE	79
PM	329
PN	67
PT	347
PU	131
PU Safety	149
PUX	287
PV	203
PVX	311
PX	249
QO	363
RA	101
RF	269
RT	355
RX	275
Tools	369
Tubings	375
VF	295
VT	359
VX	299



cmatic