

## MV LINE



CN

### 功能接头

功能接头是在常规管道连接功能之外，还具备多种气动控制功能的管接头。其种类包括流量调节阀、单向阀、气动开关、压力调节器及消声器等。

EN

### Function Fittings

Function fittings are fittings that, in addition to the usual tube connection, they offer a variety of pneumatic functions. Function fittings include flow regulators, one-way valves, pneumatic switches, pressure regulators and silencers, just to name a few.

节流阀用于调节气路中流量, 根据应用类型, 可以分为双向节流阀和单向节流阀。其中单向节流阀非常适合进行气缸速度的调节。

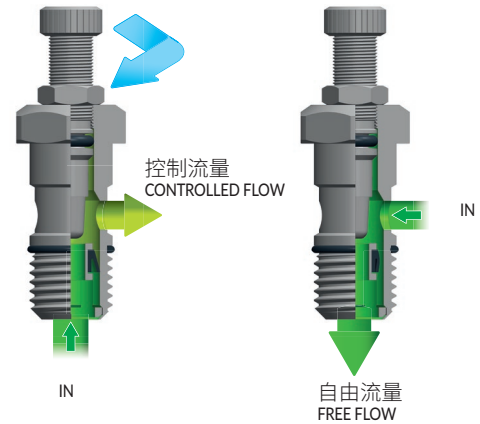
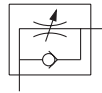
They can adjust the flow in a pneumatic circuit. Depending on the flow control used, the setting can be made both ways (Bidirectional Flow Control), or just one way (Unidirectional Flow Control).

The Unidirectional Flow Control is particularly used to adjust the speed of pneumatic cylinders.

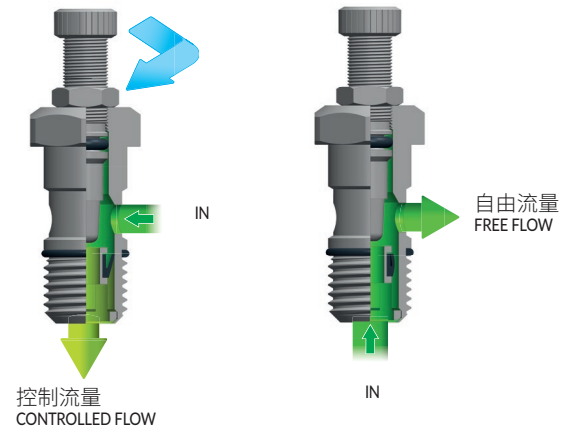
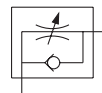
**i** 流量调节范围

Possible Flow Adjustments

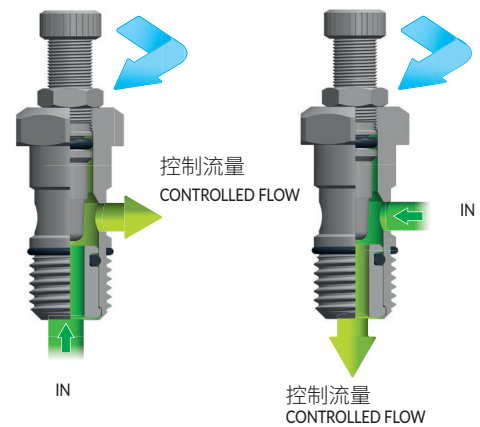
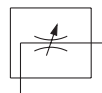
.../O = 排气节流  
Meter out flow control



.../I = 进气节流  
Meter in flow control



.../B = 双向流量调节  
Bidirectional flow control



# MV 12

MV  
LINE

## 旋转型推拉锁定节流阀

## Swivelling Push to lock flow control

1 本体  
Body  
POM  
POM

2 旋钮  
Handwheel  
PA6 FV  
PA6 GR

3 针阀  
Needle  
PA66 FV  
PA66 GR

4 密封圈  
Seals  
NBR  
NBR

5 插装阀芯  
Cartridge  
PBT  
PBT

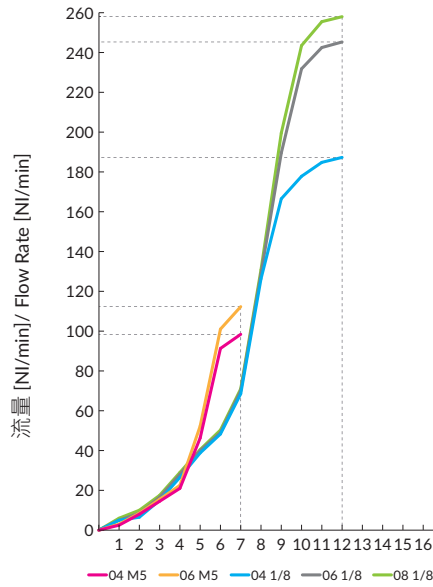
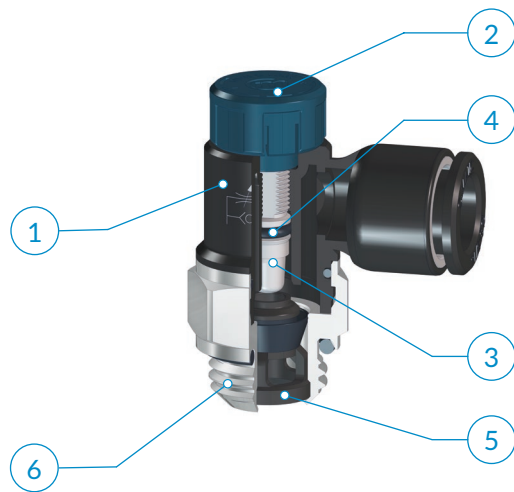
6 螺纹  
Thread  
黄铜镀镍 UNI EN 12164 CW614N  
Brass UNI EN 12164 CW614N nickel plated



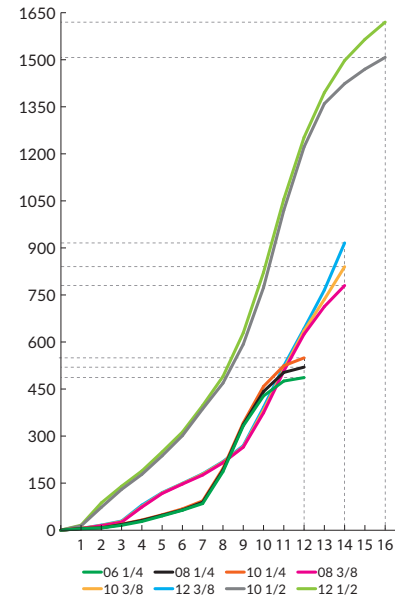
-20° ± 70°C



10 bar

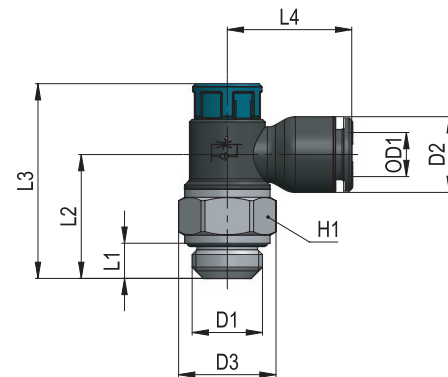


P = 6 bar - Δp = 1bar

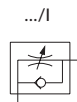
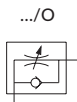


调节针圈数 / N° of needle turns

类型	OD1	D1	D2	D3	L1	L2	L3	L4	H1	g Δ
12 04 M5	4	M5x0,8	9,5	11	4	15,5	26,2	17,2	10	4,2
12 04 18	4	G1/8	9,5	15,5	5,5	19,5	32,5	18,5	14	8,9
12 06 M5	6	M5x0,8	11,5	11	4	15,9	26,6	20,3	10	4,5
12 06 18	6	G1/8	11,5	15,5	5,5	19,4	32,6	21,5	14	9,4
12 06 14	6	G1/4	11,5	18	6,5	22,9	36	22,5	16	13,6
12 08 18	8	G1/8	14	15,5	5,5	19,4	32,5	22	14	9,7
12 08 14	8	G1/4	14	18	6,5	22,9	36	23	16	13,9
12 08 38	8	G3/8	14	22,5	7	27	45,6	24,5	20	25,4
12 10 14	10	G1/4	16	18	6,5	22,9	36,1	25	16	14,5
12 10 38	10	G3/8	16	22,5	7	27	45,6	26,3	20	25,0
12 10 12	10	G1/2	16	28	8,5	32,5	51,1	27	25	42,1
12 12 38	12	G3/8	19	22,5	7	27	45,6	28	20	26,7
12 12 12	12	G1/2	19	28	8,5	32,5	51,1	28,6	25	43,0



可用版本:  
Available as:



### 建议的连接管路:

取决于与节流阀相连的接头类型。

### Recommended tubings:

According to the fitting connected to the flow control.

### 应用领域:

空气经过过滤和润滑处理的气动系统。

### Application field:

Pneumatic installations fed with filtered, lubricated air.

- AP 55
- AR 63
- AV 221
- CO 157
- CX 255
- EV 217
- GU 119
- GU Safety 135
- GX 281
- GX Safety 291
- HP 317
- MA 27
- MB 41
- MC 83
- MF 235
- MM 333
- MO 93
- MP 323
- MT 339
- MV 171
- MX 241
- MY 229
- OX 261
- PA 113
- PE 79
- PM 329
- PN 67
- PT 347
- PU 131
- PU Safety 149
- PUX 287
- PV 203
- PVX 311
- PX 249
- QO 363
- RA 101
- RF 269
- RT 355
- RX 275
- Tools 369
- Tubings 375
- VF 295
- VT 359
- VX 299

# MV 15

节流阀

Flow control

- 1 本体  
Body
- 2 针阀  
Needle
- 3 插装阀芯  
Cartridge
- 4 旋转螺丝刀槽  
Knob and screwdriver slot

- 5 密封圈  
Seals

- 6 垫圈  
Gasket

黄铜镀镍 UNI EN 12164 CW614N  
Brass UNI EN 12164 CW614N, nickel plated

NBR  
NBR

PA6  
PA6



-20° ÷ 80°C



10 bar



## PLUS



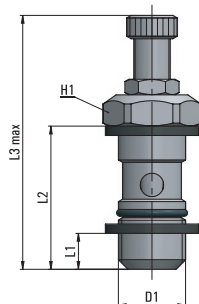
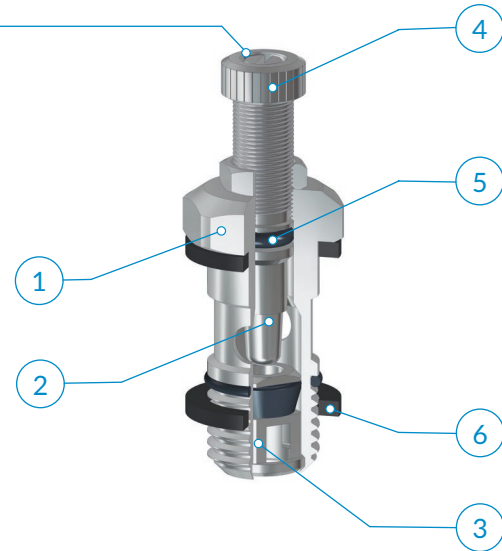
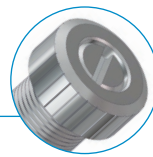
改进的人体工学设计：旋钮抓握表面面积平均增加14%。  
Improved ergonomics: +14% (on average) knob gripping surface.



螺丝刀导槽：旋钮中的槽口可固定螺丝刀防止滑脱。  
Screwdriver guide: the slot housed in the knob keeps the screwdriver in place.



可靠调节：防松螺母能有效防止因振动或意外触碰导致的设定值变动。  
Reliable adjustment: the locking counter-nut protects the setting from vibrations and accidental changes.



类型	D1	L1	L2	L3 max	H1	g $\Delta$
15 00 M5	M5x0,8	4	15,2	39,1	8	7,0
15 00 18	G1/8	5,1	23,7	41,7	14	21,0
15 00 14	G1/4	6,7	27,2	48,8	17	37,0
15 00 38	G3/8	7,4	31	62,2	20	61,0
15 00 12	G1/2	9,9	37,9	76	26	106,0

可用版本：  
Available as:



**建议的连接管路：**  
取决于与节流阀相连的接头类型。

**Recommended tubings:**  
According to the fitting connected to the flow control.

**应用领域：**  
空气经过过滤和润滑处理的气动系统。

**Application field:**  
Pneumatic installations fed with filtered, lubricated air.

# MV 18

MV  
LINE

铜制可调向快插式节流阀

Brass flow control with swivelling push-in fitting

- 1 本体  
Body
- 2 针阀  
Needle
- 3 插装阀芯  
Cartridge
- 4 旋转螺丝刀槽  
Knob and screwdriver slot

- 5 密封圈  
Seals
- NBR  
NBR

- 6 MA快插接头  
MA line push-in fittings

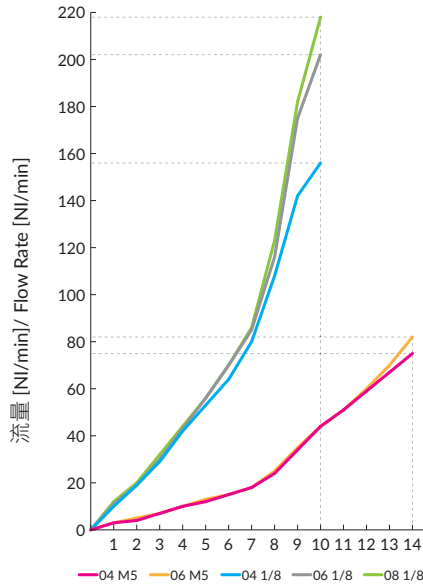
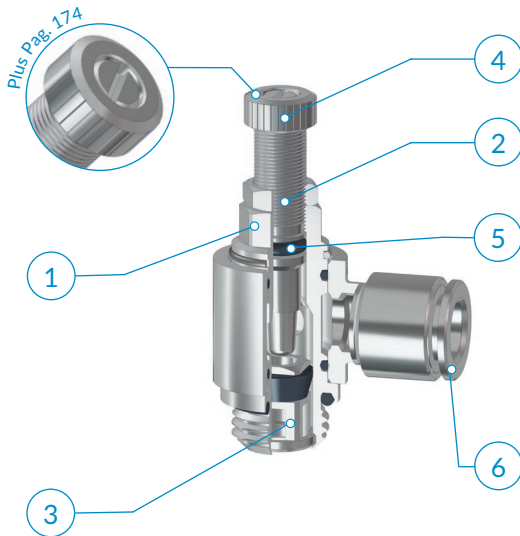
黄铜镀镍 UNI EN 12164 CW614N  
Brass UNI EN 12164 CW614N, nickel plated



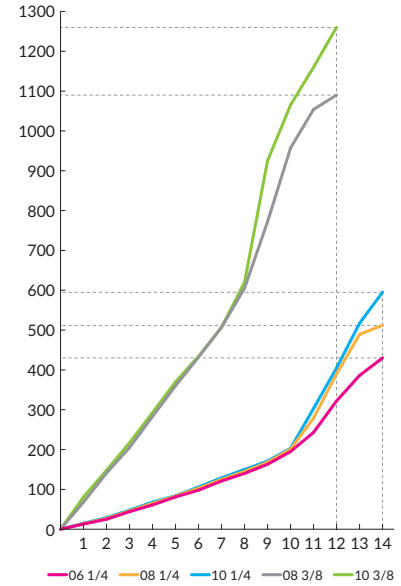
-20° ÷ 80°C



10 bar



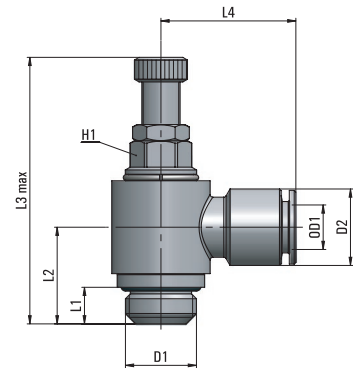
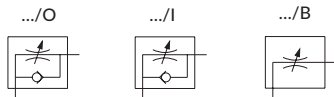
P = 6 bar - Δp = 1bar



调节针圈数 / N° of needle turns

类型	OD1	D1	D2	L1	L2	L3 max	L4	H1	g
18 04 M5	4	M5x0,8	9,1	4	12,5	40,4	18,5	6	13,0
18 04 18	4	G1/8	9,1	5,2	15,1	41,7	20,5	9	31,0
18 06 M5	6	M5x0,8	12	4	12,5	40,4	21,5	6	15,5
18 06 18	6	G1/8	12	5,2	15,1	41,7	22,5	9	32,9
18 06 14	6	G1/4	12	6,4	17,4	48,8	24	10	52,0
18 08 18	8	G1/8	14	5,2	15,1	41,7	23,5	9	32,5
18 08 14	8	G1/4	14	6,4	17,4	48,8	24,5	10	56,0
18 08 38	8	G3/8	14	7	20	62,2	26,5	14	90,0
18 10 14	10	G1/4	16	6,4	17,4	48,8	27	10	50,0
18 10 38	10	G3/8	16	7	20	62,2	29	14	91,0

可用版本:  
Available as:



节流阀安装完成后, 铰接接头本体部分仍可自由转动。  
The banjo ring swivels also after flow control installation.

**建议的连接管路:**

PA11、PA12、PA6、PU聚氨酯(98 Shore A)

**Recommended tubings:**

PA11, PA12, PA6, Polyurethane PU (98 Shore A).

**应用领域:**

空气经过过滤和润滑处理的气动系统。

**Application field:**

Pneumatic installations fed with filtered, lubricated air.

- AP 55
- AR 63
- AV 221
- CO 157
- CX 255
- EV 217
- GU 119
- GU Safety 135
- GX 281
- GX Safety 291
- HP 317
- MA 27
- MB 41
- MC 83
- MF 235
- MM 333
- MO 93
- MP 323
- MT 339
- MV 171
- MX 241
- MY 229
- OX 261
- PA 113
- PE 79
- PM 329
- PN 67
- PT 347
- PU 131
- PU Safety 149
- PUX 287
- PV 203
- PVX 311
- PX 249
- QO 363
- RA 101
- RF 269
- RT 355
- RX 275
- Tools 369
- Tubings 375
- VF 295
- VT 359
- VX 299

# MV 38

塑料可调向快插式节流阀

Flow control with swivelling acetal push-in fitting

- 1 本体  
Body
- 2 针阀  
Needle
- 3 插装阀芯  
Cartridge
- 4 旋转螺丝刀槽  
Knob and screwdriver slot

- 5 密封圈  
Seals

- 6 MB快插接头  
MB line push-in fittings

黄铜镀镍 UNI EN 12164 CW614N  
Brass UNI EN 12164 CW614N, nickel plated

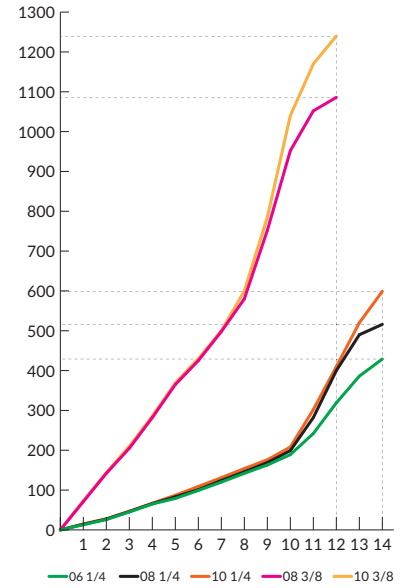
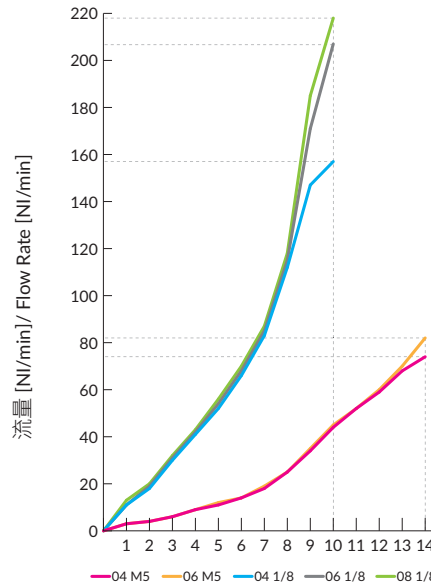
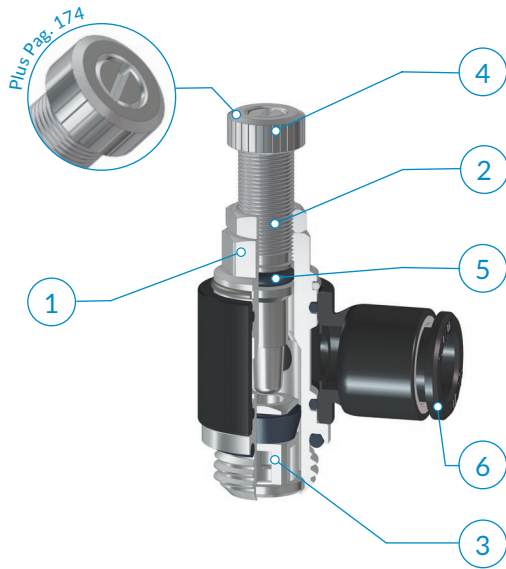
NBR  
NBR



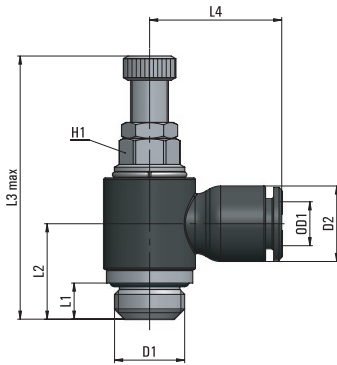
-20° ÷ 70°C

10 bar

P = 6 bar - Δp = 1 bar

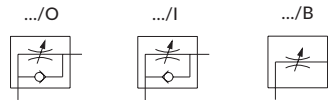


调节针圈数 / N° of needle turns



类型	OD1	D1	D2	L1	L2	L3 max	L4	H1	g Δ
38 04 M5	4	M5x0,8	9,7	4	12	40,4	17,6	6	8,0
38 04 18	4	G1/8	9,7	5,2	15,1	41,7	19,1	9	17,0
38 06 M5	6	M5x0,8	12	4	11,5	40,4	21,5	6	9,0
38 06 18	6	G1/8	12	5,2	15,1	41,7	22,7	9	18,0
38 06 14	6	G1/4	12	6,4	17,4	48,8	24,3	10	31,0
38 08 18	8	G1/8	14	5,2	14,9	41,7	23	9	20,0
38 08 14	8	G1/4	14	6,4	17,4	48,8	24,6	10	32,0
38 08 38	8	G3/8	14	7	20	62,2	26,5	14	59,0
38 10 14	10	G1/4	16	6,4	17,4	48,8	27	10	33,0
38 10 38	10	G3/8	16	7	20	62,2	28,5	14	60,0

可用版本:  
Available as:



**!** 节流阀安装完成后, 铰接接头本体部分仍可自由转动。  
The banjo ring swivels also after flow control installation.

**建议的连接管路:**  
PA11、PA12、PA6、PU聚氨酯(98 Shore A)

**Recommended tubings:**  
PA11, PA12, PA6, Polyurethane PU (98 Shore A).

**应用领域:**  
空气经过过滤和润滑处理的气动系统。

**Application field:**  
Pneumatic installations fed with filtered, lubricated air.

# MV 39

MV  
LINE

塑料快插式节流阀

Flow control with acetal push-in fitting

- 1 本体  
Body

黄铜镀镍 UNI EN 12164 CW614N  
Brass UNI EN 12164 CW614N, nickel plated
- 2 针阀  
Needle
- 3 插装阀芯  
Cartridge
- 4 旋转螺丝刀槽  
Knob and screwdriver slot
- 5 密封圈  
Seals

NBR  
NBR
- 6 MB快插接头  
MB line push-in fittings
- 7 垫圈  
Gasket

PA6  
PA6



-20° ÷ 70°C



10 bar



SILICONE FREE

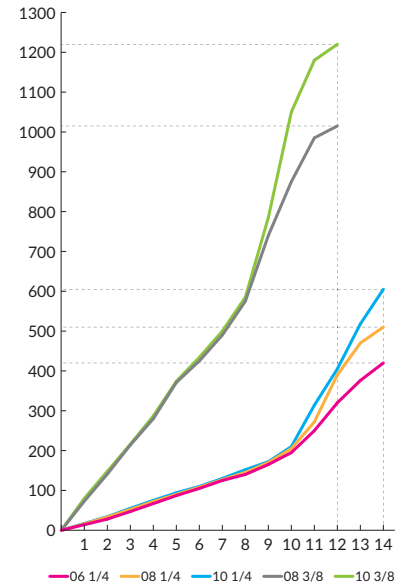
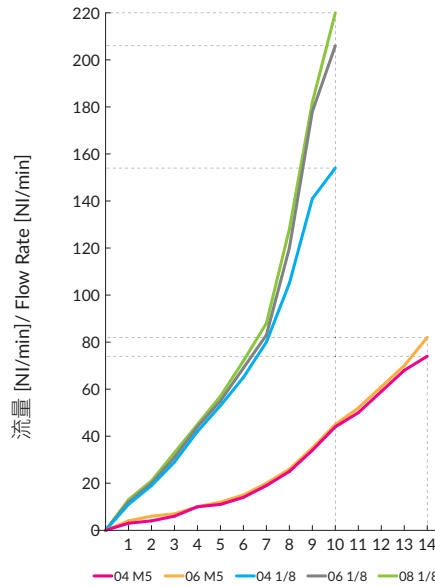
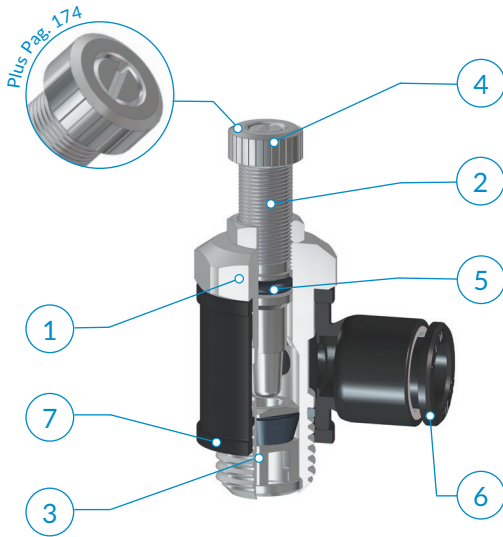


RoHS



REACH

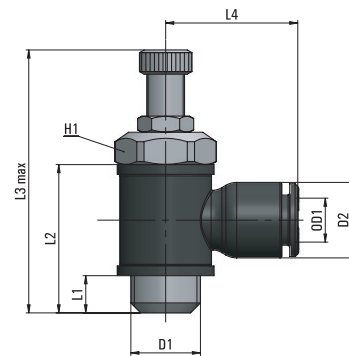
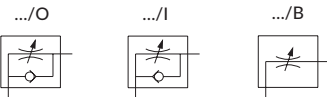
P = 6 bar - Δp = 1bar



调节针圈数 / N° of needle turns

类型	OD1	D1	D2	L1	L2	L3 max	L4	H1	g $\Delta$
39 04 M5	4	M5x0,8	9,7	4	15,2	39,1	17,6	8	7,0
39 04 18	4	G1/8	9,7	5,1	23,7	41,7	19,1	14	20,0
39 06 M5	6	M5x0,8	12	4	15,2	39,1	21,5	8	8,0
39 06 18	6	G1/8	12	5,1	23,7	41,7	22,7	14	21,0
39 06 14	6	G1/4	12	6,7	27,2	48,8	24,3	17	39,8
39 08 18	8	G1/8	14	5,1	23,7	41,7	23	14	22,0
39 08 14	8	G1/4	14	6,7	27,2	48,8	24,6	17	41,5
39 08 38	8	G3/8	14	7,4	31	62,2	26,5	20	67,0
39 10 14	10	G1/4	16	6,7	27,2	48,8	27	17	39,0
39 10 38	10	G3/8	16	7,4	31	62,2	28,5	20	68,0

可用版本:  
Available as:



节流阀安装完成后, 铰接头本体部分仍可自由转动。  
The banjo ring swivels also after flow control installation.

### 建议的连接管路:

PA11、PA12、PA6、PU聚氨酯(98 Shore A)

### Recommended tubings:

PA11, PA12, PA6, Polyurethane PU (98 Shore A).

### 应用领域:

空气经过过滤和润滑处理的气动系统。

### Application field:

Pneumatic installations fed with filtered, lubricated air.

- AP 55
- AR 63
- AV 221
- CO 157
- CX 255
- EV 217
- GU 119
- GU Safety 135
- GX 281
- GX Safety 291
- HP 317
- MA 27
- MB 41
- MC 83
- MF 235
- MM 333
- MO 93
- MP 323
- MT 339
- MV 171
- MX 241
- MY 229
- OX 261
- PA 113
- PE 79
- PM 329
- PN 67
- PT 347
- PU 131
- PU Safety 149
- PUX 287
- PV 203
- PVX 311
- PX 249
- QO 363
- RA 101
- RF 269
- RT 355
- RX 275
- Tools 369
- Tubings 375
- VF 295
- VT 359
- VX 299

# MV 21

线型节流阀

In-line flow control

1 本体  
Body

阳极氧化铝 Al2011  
Anodized aluminium Al2011

2 阀芯  
Valve

黄铜镀镍 UNI EN 12164 CW614N  
Brass UNI EN 12164 CW614N, nickel plated

3 针阀  
Needle

4 旋钮  
Handwheel

5 螺母  
Nut

6 密封圈  
Seals

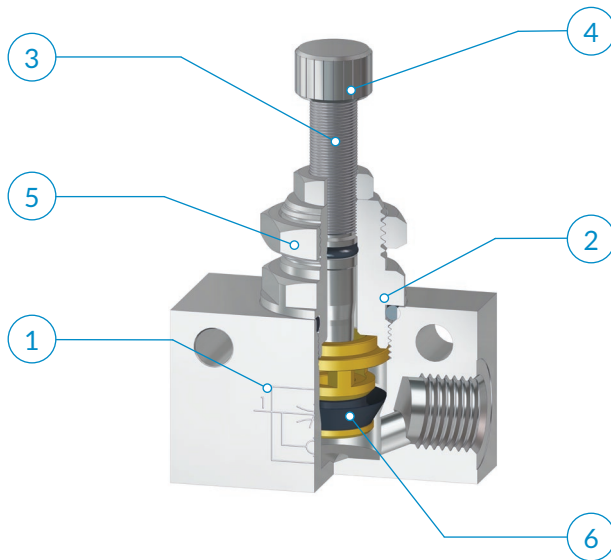
NBR  
NBR



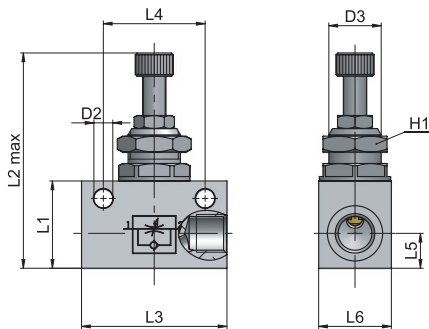
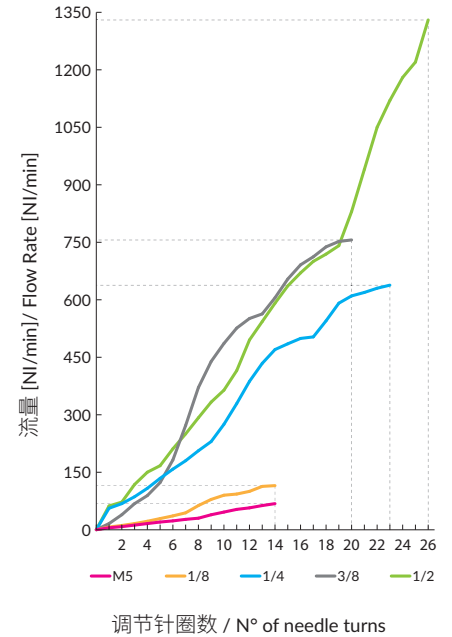
-20° ÷ 80°C



10 bar

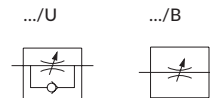


P = 6 bar - Δp = 1 bar



类型	D1	D2	D3	L1	L2 max	L3	L4	L5	L6	H1	g ΔΔ
21 00 M5	M5x0,8	3,2	M9x0,75	15	36,2	25	18	7	12	11	20,0
21 00 18	G1/8	4,5	M12x0,75	21	49,3	34	24	8	16	15	50,0
21 00 14	G1/4	6,5	M18x1,5	30	75,2	50	35	12	25	22	162,0
21 00 38	G3/8	6,5	M18x1,5	30	75,2	58	40	12	25	22	171,0
21 00 12	G1/2	6,5	M22x1,5	40	92,9	65	50	17	30	26	299,0

可用版本:  
Available as:



**建议的连接管路:**

取决于与节流阀相连的接头类型。

**Recommended tubings:**

According to the fitting connected to the flow control.

**应用领域:**

空气经过过滤和润滑处理的气动系统。

**Application field:**

Pneumatic installations fed with filtered, lubricated air.

# MV 21-P

MV  
LINE

推拉锁定线型节流阀

Push to Lock In-line flow control

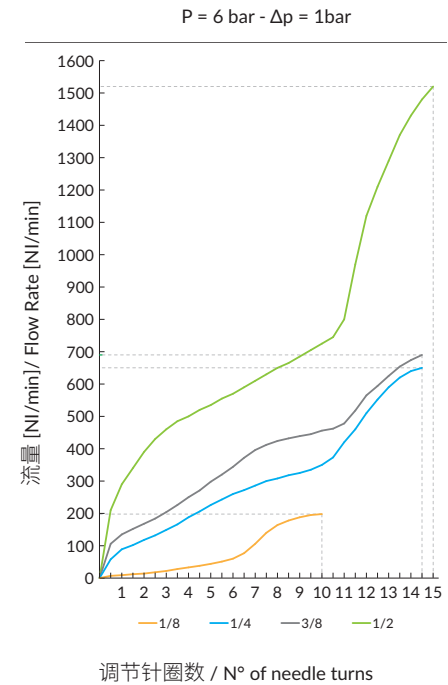
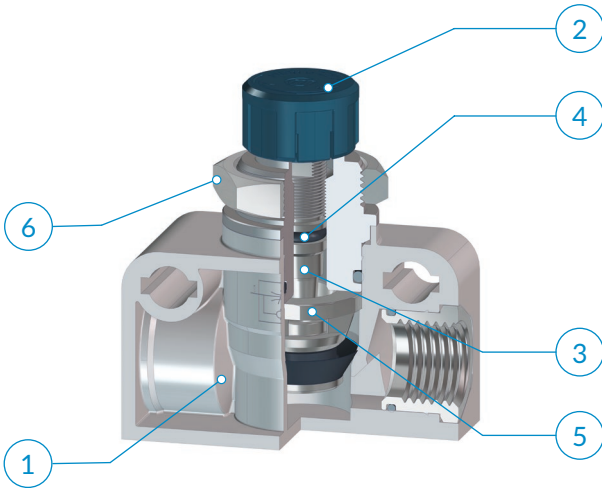
- |   |  |   |   |  |  |
|---|--|---|---|--|--|
| <p><b>1</b> 本体<br/>Body<br/>PA66 FV<br/>PA66 GR</p> | <p><b>2</b> 旋钮<br/>Handwheel<br/>PA6 FV<br/>PA6 GR</p> | <p><b>3</b> 针阀<br/>Needle<br/>PA66 FV<br/>PA66 GR</p> | <p><b>4</b> 密封圈<br/>Seals<br/>NBR<br/>NBR</p> | <p><b>5</b> 插装阀芯<br/>Cartridge<br/>PBT<br/>PBT</p> | <p><b>6</b> 拧紧螺母<br/>Thread and Nut<br/>黄铜镀镍UNI EN 12164 CW614N<br/>Brass UNI EN 12164 CW614N, nickel plated</p> |
|---|--|---|---|--|--|



-20° + 80°C

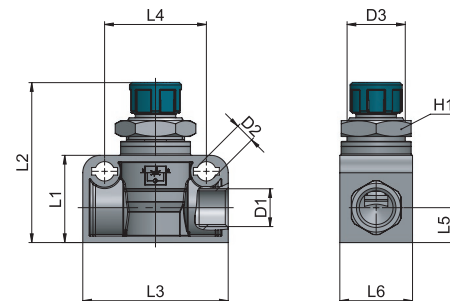
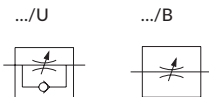


10 bar



类型	D1	D2	D3	L1	L2	L3	L4	L5	L6	H1	g ΔΔ
21 00 18 - P	G1/8	4,3	M14x1	21,75	35,8	32,5	24	8	16	17	32,7
21 00 14 - P	G1/4	6,5	M20x1	30	53,5	50	35	12	25	24	100,0
21 00 38 - P	G3/8	6,5	M20x1	32,5	53,5	50	39	12	25	24	105,0
21 00 12 - P	G1/2	6,5	M20x1	40	67,6	62	50	16,5	30	24	171,4

可用版本:  
Available as:



**建议的连接管路:**  
取决于与节流阀相连的接头类型。

**应用领域:**  
空气经过过滤和润滑处理的气动系统。

**Recommended tubings:**  
According to the fitting connected to the flow control.

**Application field:**  
Pneumatic installations fed with filtered, lubricated air.

- AP 55
- AR 63
- AV 221
- CO 157
- CX 255
- EV 217
- GU 119
- GU Safety 135
- GX 281
- GX Safety 291
- HP 317
- MA 27
- MB 41
- MC 83
- MF 235
- MM 333
- MO 93
- MP 323
- MT 339
- MV 171
- MX 241
- MY 229
- OX 261
- PA 113
- PE 79
- PM 329
- PN 67
- PT 347
- PU 131
- PU Safety 149
- PUX 287
- PV 203
- PVX 311
- PX 249
- QO 363
- RA 101
- RF 269
- RT 355
- RX 275
- Tools 369
- Tubings 375
- VF 295
- VT 359
- VX 299

# MV 34

塑料线型节流阀

Acetal in-line flow control

1 本体  
Body

POM  
POM

2 阀芯  
Valve

黄铜镀镍 UNI EN 12164 CW614N  
Brass UNI EN 12164 CW614N, nickel plated

3 针阀  
Needle

4 旋转螺丝刀槽  
Knob and screwdriver slot

5 密封圈  
Seals

NBR  
NBR

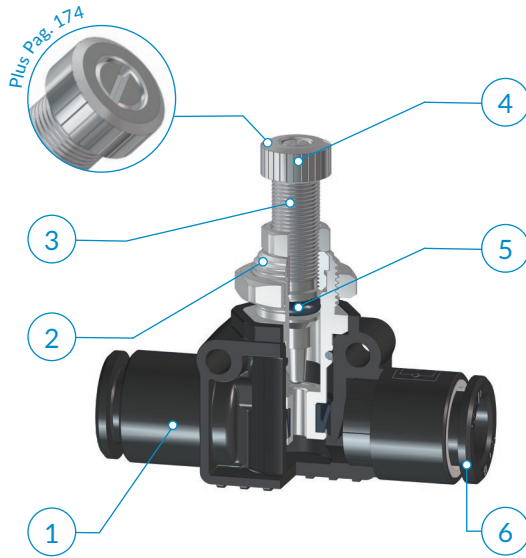
6 MB快插接头  
MB line push-in fittings



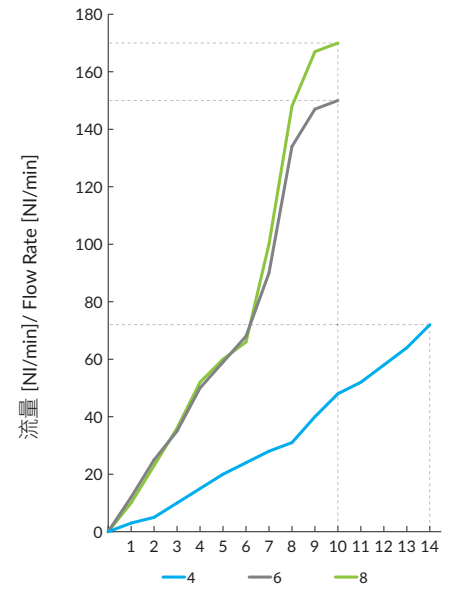
-20° ± 70°C



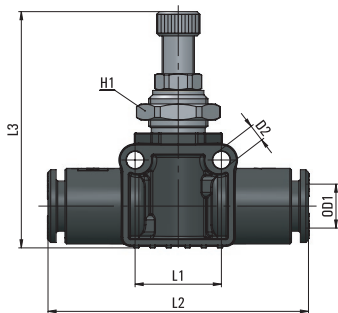
10 bar



P = 6 bar - Δp = 1 bar

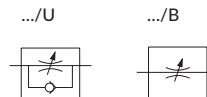


调节针圈数 / N° of needle turns



类型	OD1	D2	L1	L2	L3 max	H1	g ΔΔ
34 04 04	4	3,2	13	36,4	35,9	11	11,8
34 06 06	6	3,2	16	47	42,3	14	24,0
34 08 08	8	3,2	16	48	43,8	14	28,0

可用版本:  
Available as:



**建议的连接管路:**

PA11、PA12、PA6、PU聚氨酯(98 Shore A)

**Recommended tubings:**

PA11, PA12, PA6, Polyurethane PU (98 Shore A).

**应用领域:**

空气经过滤和润滑处理的气动系统。

**Application field:**

Pneumatic installations fed with filtered, lubricated air.

# MV 49

MV  
LINE

铰接式节流阀

Banjo with integrated flow control

1 本体  
Body

2 针阀  
Needle

3 密封圈  
Seals

4 MA快插接头  
MA line push-in fittings

黄铜镀镍 UNI EN 12164 CW614N  
Brass UNI EN 12164 CW614N, nickel plated

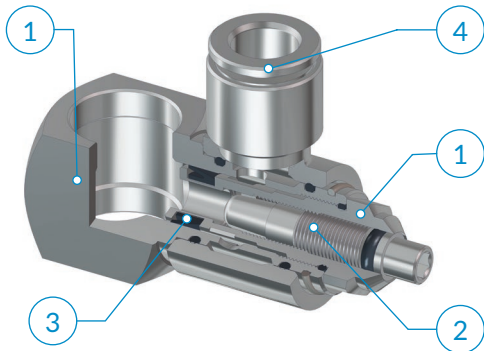
NBR  
NBR



-20° + 80°C



10 bar

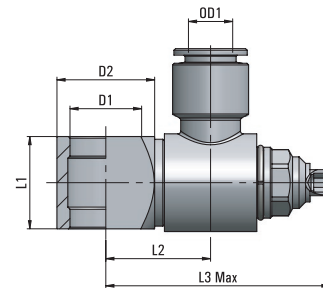


+ MV46  
气动开关  
Controlled Pneumatic Switch

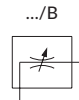
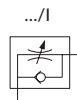
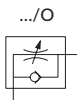


+ MV45  
关断阀  
Controlled Stop Valve

类型	OD1	D1	D2	L1	L2	L3 max	g $\Delta$
49 06 14	6	13,2	18	17	19,3	41,3	66,0
49 08 14	8	13,2	18	17	19,3	41,3	66,0
49 08 38	8	17	21	20	22	51,2	110,0
49 10 38	10	17	21	20	22	51,2	110,0



可用版本:  
Available as:



**建议的连接管路:**

PA11、PA12、PA6、PU聚氨酯(98 Shore A)

**应用领域:**

空气经过过滤和润滑处理的气动系统。

**Recommended tubings:**

PA11, PA12, PA6, Polyurethane PU (98 Shore A).

**Application field:**

Pneumatic installations fed with filtered, lubricated air.

AP 55  
AR 63  
AV 221  
CO 157  
CX 255  
EV 217  
GU 119  
GU Safety 135  
GX 281  
GX Safety 291  
HP 317  
MA 27  
MB 41  
MC 83  
MF 235  
MM 333  
MO 93  
MP 323  
MT 339  
MV 171  
MX 241  
MY 229  
OX 261  
PA 113  
PE 79  
PM 329  
PN 67  
PT 347  
PU 131  
PU Safety 149  
PUX 287  
PV 203  
PVX 311  
PX 249  
QO 363  
RA 101  
RF 269  
RT 355  
RX 275  
Tools 369  
Tubings 375  
VF 295  
VT 359  
VX 299

# MV 44

节流接头

Throttle fitting

1 MA快插接头  
MA line push-in fittings

2 阀芯  
Cartridge

3 密封圈  
Seals

黄铜镀镍UNI EN 12164 CW614N  
Brass UNI EN 12164 CW614N, nickel plated

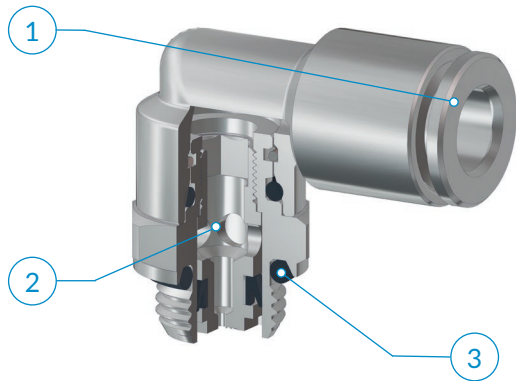
NBR  
NBR



-20° + 80°C



15 bar



P = 6 bar - Δp = 1bar

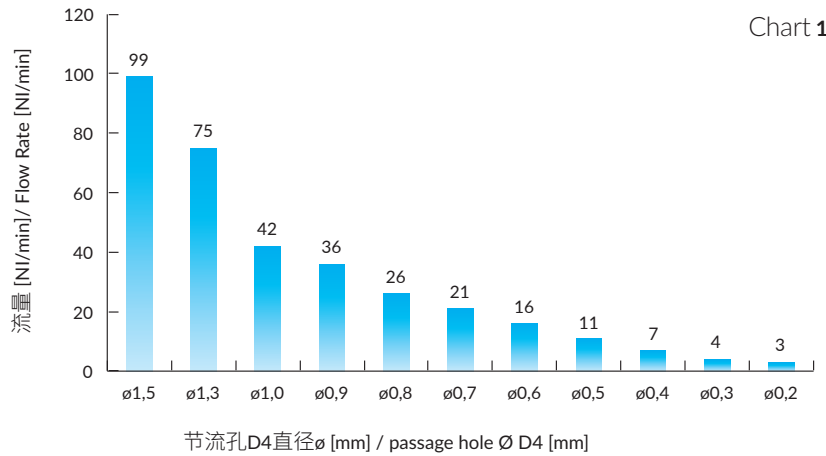
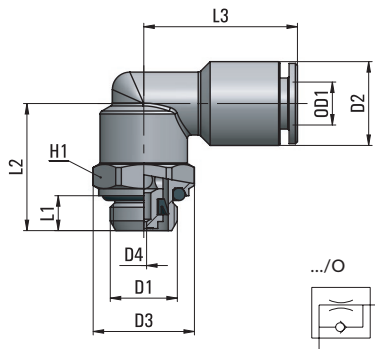


Chart 1



类型	OD1	D1	D2	D3	D4	L1	L2	L3	H1	g
44 04 M5	4	M5x0,8	9,1	10	0,2	4	12,5	18,5	6	11,4
44 04 18	4	G1/8	9,1	14,5	0,2	5	18,2	19,5	13	18
44 06 M5	6	M5x0,8	12	10	0,2	4	12,5	21,5	6	13
44 06 18	6	G1/8	12	14,5	0,2	5	18,2	22	13	20
44 06 14	6	G1/4	12	16	0,2	6,5	22,7	22	13	24
44 08 18	8	G1/8	14	14,5	0,2	5	18	22,5	13	22
44 08 14	8	G1/4	14	16	0,2	6,5	22,5	22,5	13	26



订购时，注明物料代码后，指定所需孔径 (D4)，例如 (MV 44 06 18 0.3)  
In case of order, please state after the part number, the size of the calibrated orifice (D4). I.e. (MV 44 06 18 0.3)



节流接头内部阀芯上有节流孔，不同节流孔对应不同流量，您在使用前需要依照情况对节流孔尺寸进行选择；节流接头通常用于控制活塞速度保持恒定不变的气缸运动，优点在于不存在由于意外情况更发生更改设定流量的情况，且在存在震动的情况下，依旧可以保证流量稳定。

**建议的连接管路：**

PA11、PA12、PA6、PU聚氨酯(98 Shore A)

**应用领域：**

空气经过过滤和润滑处理的气动系统。



This fitting houses a cartridge with a calibrated orifice. The orifice diameter causes a flow throttling thereby allowing the desired flow (see our Chart 1). The throttle fittings are mostly used when the user knows the exact cylinder speed and when no further settings of the cylinder are requested. The major advantage is that no undesired tamperings can occur and in case of vibrations the flow setting will remain stable.

**Recommended tubings:**

PA11, PA12, PA6, Polyurethane PU (98 Shore A).

**Application field:**

Pneumatic installations fed with filtered, lubricated air.

# MV 47

调压阀

Pressure control

MV  
LINE

1 本体  
Body

黄铜镀镍 UNI EN 12164 CW614N  
Brass UNI EN 12164 CW614N, nickel plated

2 弹簧  
Spring

AISI 302 不锈钢  
Stainless steel AISI 302

3 密封圈  
Seals

NBR  
NBR



-20° ÷ 80°C



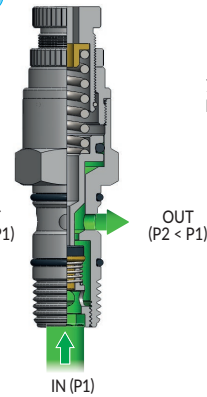
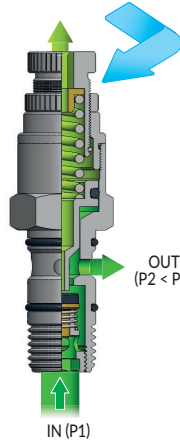
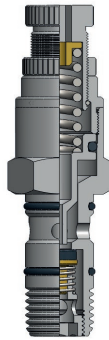
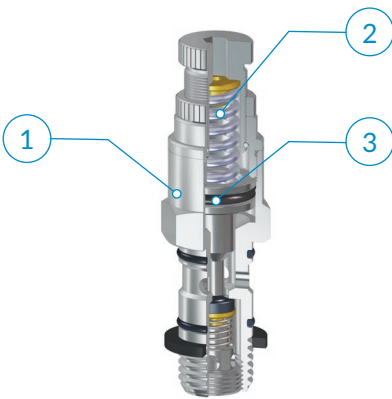
10 bar



8 bar



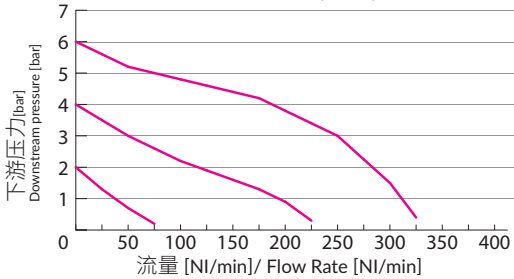
排气  
VENTING  
(P1-P2)



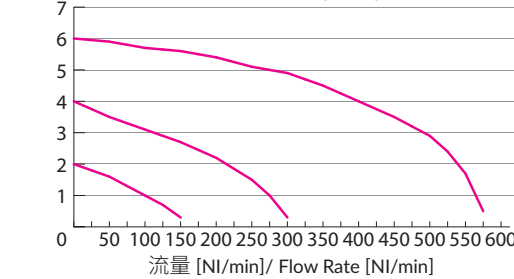
(6 bar - Δp = 1bar)

流量 Flow rate	1/8	205 NI/min
	1/4	290 NI/min

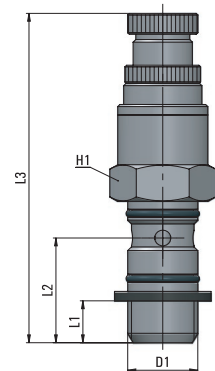
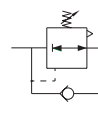
MV47 1/8" 搭配 MA35 06 1/8" 使用的流量特性, 上游压力 6.5bar  
Flow characteristics MV47 1/8" with MA35 06 1/8" upstream pressure 6,5 bar



MV47 1/4" 搭配 MA38 08 1/4" 使用的流量特性, 上游压力 6.5bar  
Flow characteristics MV47 1/4" with MA38 08 1/4" upstream pressure 6,5 bar



类型	D1	L1	L2	L3	H1	g
47 00 18	G1/8	6.2	15.5	56.8	15	33,6
47 00 14	G1/4	8.2	18.5	62.9	17	54,0



**i** 安装在气动回路中, 可调节所连接设备的工作压力, 长时间保持调节值恒定。可视作气缸和控制阀之间的节气单元, 调整压力使降低到气缸活塞获得合适速度, 因此产生节能效果。

**建议的连接管路:**  
取决于与调压阀相连的接头类型。

**应用领域:**  
空气经过过滤和润滑处理的气动系统。

**i** When installed in a pneumatic circuit, the pressure control sets the working pressure of all the connected components. The pressure adjustment will be thereby kept steady for a long time. It can also be used as an economizer when connected between the valve and the cylinder to operate. Pressure is being saved and rod speed decreased in the desired direction. A big energy saving is this way obtained.

**Recommended tubings:**  
According to the fitting connected to the pressure control.

**Application field:**  
Pneumatic installations fed with filtered, lubricated air.

AP	55
AR	63
AV	221
CO	157
CX	255
EV	217
GU	119
GU Safety	135
GX	281
GX Safety	291
HP	317
MA	27
MB	41
MC	83
MF	235
MM	333
MO	93
MP	323
MT	339
MV	171
MX	241
MY	229
OX	261
PA	113
PE	79
PM	329
PN	67
PT	347
PU	131
PU Safety	149
PUX	287
PV	203
PVX	311
PX	249
QO	363
RA	101
RF	269
RT	355
RX	275
Tools	369
Tubings	375
VF	295
VT	359
VX	299

# MV 45

先导式单向阀

Pilot operated check valve

1 本体  
Body

黄铜镀镍 UNI EN 12164 CW614N  
Brass UNI EN 12164 CW614N, nickel plated

2 活塞  
Piston

AISI 304 不锈钢  
Stainless steel AISI 304

3 弹簧  
Spring

AISI 302 不锈钢  
Stainless steel AISI 302

4 密封圈  
Seals

NBR-PU  
NBR-PU

5 垫圈  
Gasket

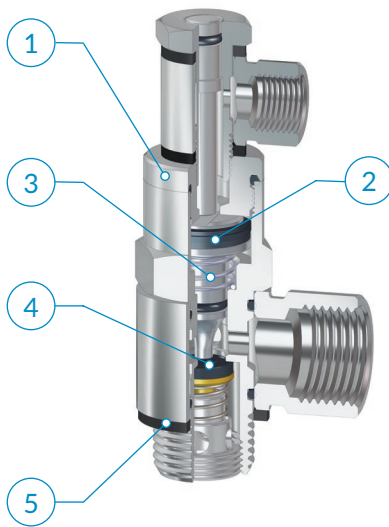
PA6  
PA6



-20° ÷ 80°C

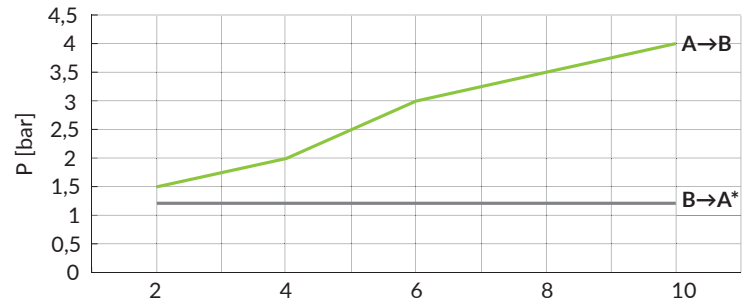


10 bar



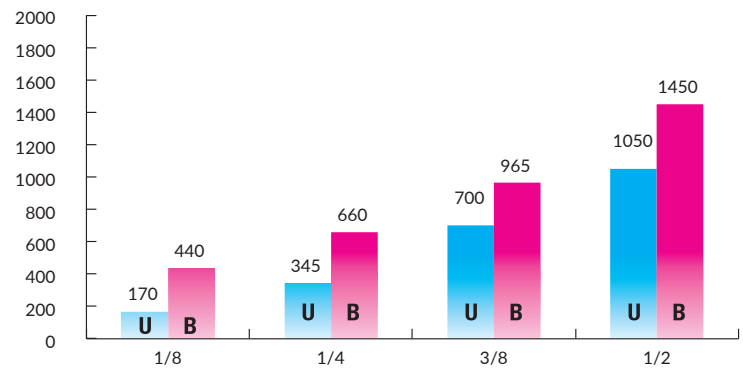
手动控制单独有售 - Manual control sold separately  
M5 p/n: 11000015-MA/RA  
1/8 p/n: 11000016-MA/RA

先导压力 - Pilot pressure P [bar]



入口压力 - Inlet pressure [bar]  
\*仅限于 /B - Only for /B

流量 - Flow capacity [NI/min] 6 bar - Δp1



**i** 先导式单向阀 如果成对安装在缸上,当控制压力突然下降时,则能确保防止气缸运动。通过解锁装置,可以手动重置活塞行程,这在调整阶段或缺少空气时特别有用。

**建议的连接管路:**  
取决于与阀相连的接头类型。

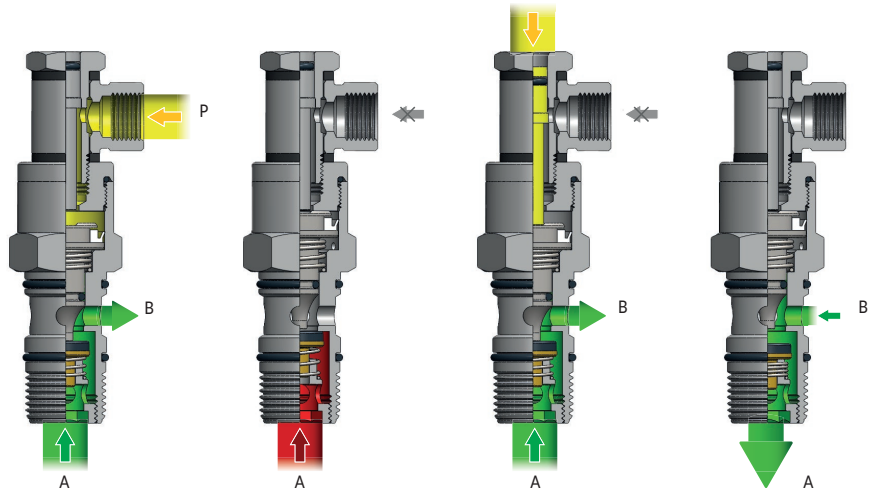
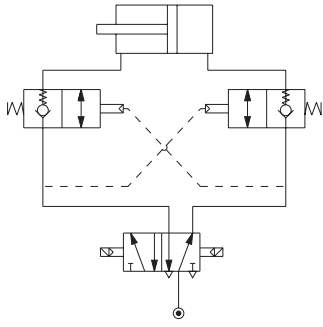
**应用领域:**  
空气经过过滤和润滑处理的气动系统。

**i** Should a sudden pressure failure happen, if the stop valves are assembled in pairs on the cylinder, the stop valves make sure, that the cylinder piston rapidly stops. By operating the override device, it is possible to reset manually the piston stroke, which is particularly important during a set-up phase or in case of air shortage.

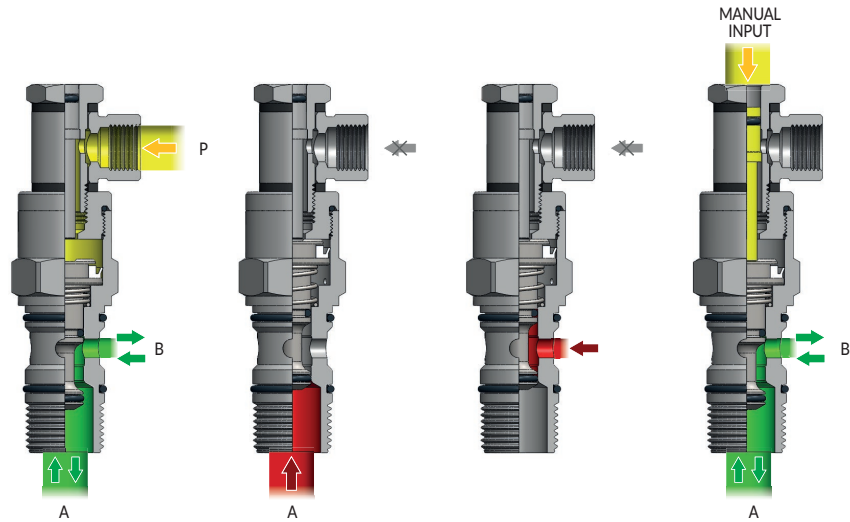
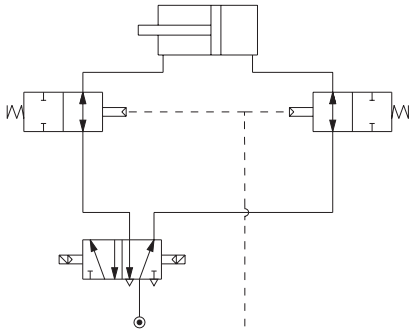
**Recommended tubings:**  
according to the fitting connected to the valve.

**Application field:**  
Pneumatic installations fed with filtered, lubricated air.

/U = 单向阀 - One Way

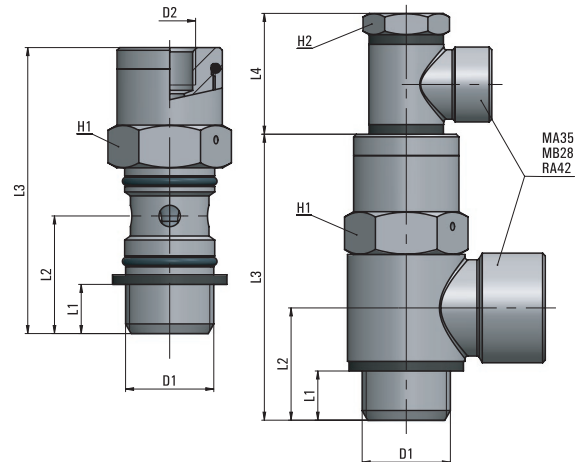
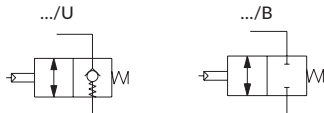


/B = 双向阀 - Bidirectional



类型	D1	D2	L1	L2	L3	L4	H1	H2	g Δ
45 00 18	G1/8	M5x0,8	6,2	15,5	42,8	20	13	8	24,0
45 00 14	G1/4	M5x0,8	8,2	18,3	47,5	20	17	8	46,0
45 00 38	G3/8	G1/8	9,2	21	55	23	20	14	77,5
45 00 12	G1/2	G1/8	10,5	25	61,5	23	25	14	138,5

可用版本:  
Available as:



- AP 55
- AR 63
- AV 221
- CO 157
- CX 255
- EV 217
- GU 119
- GU Safety 135
- GX 281
- GX Safety 291
- HP 317
- MA 27
- MB 41
- MC 83
- MF 235
- MM 333
- MO 93
- MP 323
- MT 339
- MV 171
- MX 241
- MY 229
- OX 261
- PA 113
- PE 79
- PM 329
- PN 67
- PT 347
- PU 131
- PU Safety 149
- PUX 287
- PV 203
- PVX 311
- PX 249
- QO 363
- RA 101
- RF 269
- RT 355
- RX 275
- Tools 369
- Tubings 375
- VF 295
- VT 359
- VX 299

# MV 23

单向阀

Check valve

1 本体  
Body  
黄铜镀镍 UNI EN 12164 CW614N  
Brass UNI EN 12164 CW614N, nickel plated

2 阀芯  
Valve

3 密封圈  
Seals  
NBR  
NBR

4 弹簧  
Spring  
AISI 302 不锈钢  
Stainless steel AISI 302



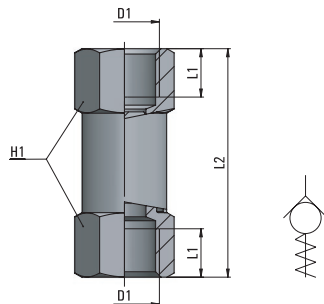
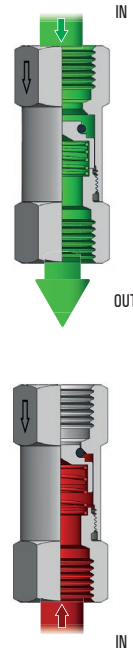
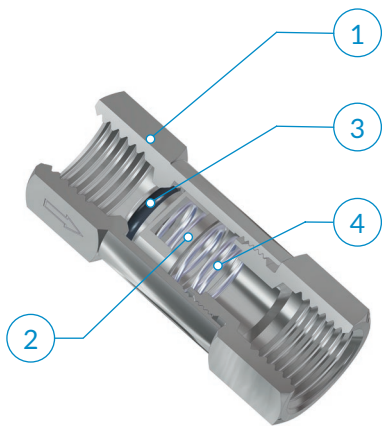
-20° + 80°C



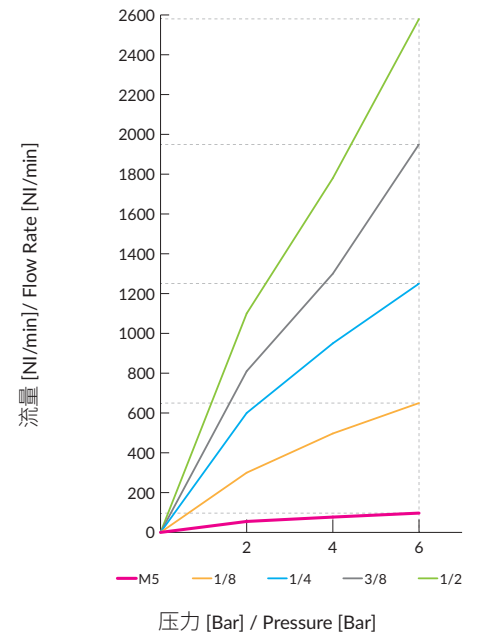
2÷10 bar



0,2 bar



P = 6 bar - Δp = 1 bar



类型	D1	L1	L2	H1	g ΔΔ
23 00 M5	M5x0,8	6	25	8	7,2
23 00 18	G1/8	8	36,5	13	25,8
23 00 14	G1/4	9	42,5	16	38,3
23 00 38	G3/8	10,5	51	20	72,0
23 00 12	G1/2	12,5	62	24	120,0

**i** 流体仅允许单向通过 (沿着阀体上箭头方向), 反向截止。

**i** The flow is allowed only in one way (the arrow direction engraved on the body) and stopped in the reverse way.

**建议的连接管路:**  
取决于与阀相连的接头类型。

**Recommended tubings:**  
According to the fitting connected to the valve.

**应用领域:**  
空气经过过滤和润滑处理的气动系统。

**Application field:**  
Pneumatic installations fed with filtered, lubricated air.

# MV 33

MV  
LINE

快插式单向阀

Straight connection with check valve

- 1 本体  
Body

黄铜镀镍 UNI EN 12164 CW614N  
Brass UNI EN 12164 CW614N, nickel plated
- 2 阀芯  
Valve
- 3 密封圈  
Seals

NBR  
NBR
- 4 弹簧  
Spring

AISI 302 不锈钢  
Stainless steel AISI 302
- 5 MA快插接头  
MA line push-in fittings



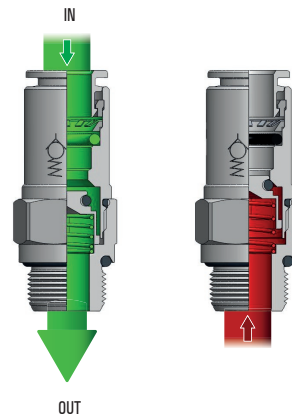
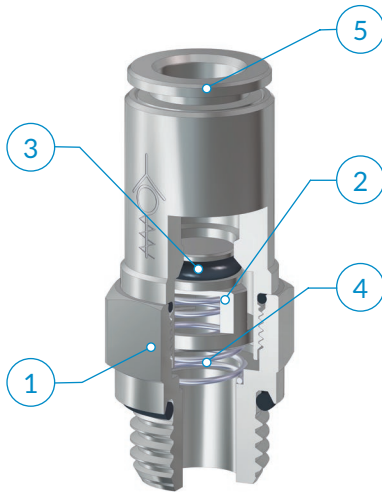
-20° ÷ 80°C



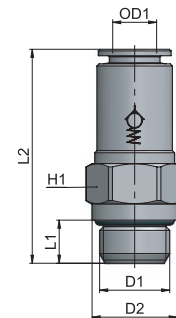
2÷10 bar



0,2 bar



类型	OD1	D1	D2	L1	L2	H1	g $\Delta$
33 04 M5	4	M5x0,8	8	4	37,2	9	10,0
33 04 18	4	G1/8	13	6	30,9	11	13,0
33 06 18	6	G1/8	13	6	38	13	18,0
33 06 14	6	G1/4	16	8	39	14	26,0
33 08 18	8	G1/8	13	6	38,5	15	23,0
33 08 14	8	G1/4	16	8	39,5	16	27,0
33 10 14	10	G1/4	16	8	44	18	36,0
33 10 38	10	G3/8	20	9	43,5	18	42,0
33 12 12	12	G1/2	25	10	46,5	22	68,0
33 14 12	14	G1/2	25	10	54,7	25	90,0



**i** 流体仅允许单向通过 (沿着阀体上箭头方向), 反向截止。

**建议的连接管路:**

PA11、PA12、PA6、PU聚氨酯(98 Shore A)

**应用领域:**

空气经过过滤和润滑处理的气动系统。

**i** The flow is allowed only in one way (the arrow direction engraved on the body) and stopped in the reverse way.

**Recommended tubings:**

PA11, PA12, PA6, Polyurethane PU (98 Shore A)

**Application field:**

Pneumatic installations fed with filtered, lubricated air.

- AP 55
- AR 63
- AV 221
- CO 157
- CX 255
- EV 217
- GU 119
- GU Safety 135
- GX 281
- GX Safety 291
- HP 317
- MA 27
- MB 41
- MC 83
- MF 235
- MM 333
- MO 93
- MP 323
- MT 339
- MV 171
- MX 241
- MY 229
- OX 261
- PA 113
- PE 79
- PM 329
- PN 67
- PT 347
- PU 131
- PU Safety 149
- PUX 287
- PV 203
- PVX 311
- PX 249
- QO 363
- RA 101
- RF 269
- RT 355
- RX 275
- Tools 369
- Tubings 375
- VF 295
- VT 359
- VX 299

# MV 33-T

快插式单向阀

Straight connection with check valve

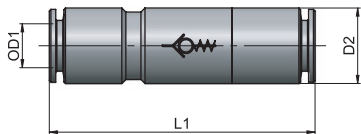
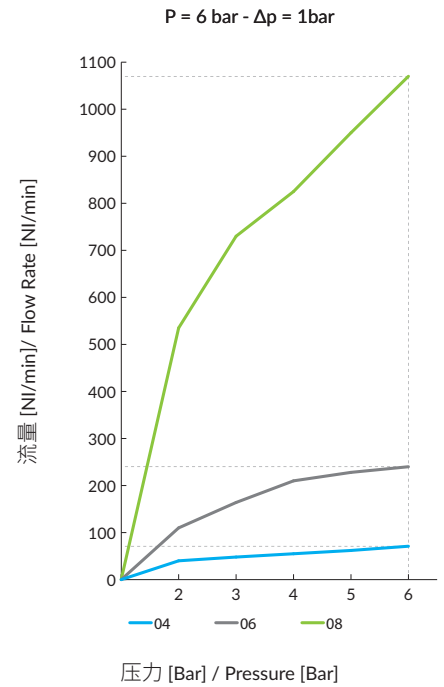
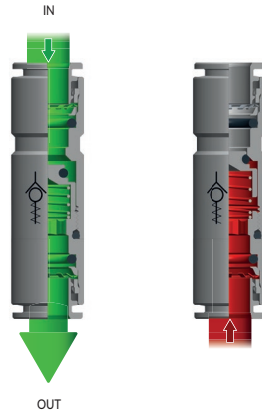
- 1** 本体  
Body

黄铜镀镍 UNI EN 12164 CW614N  
Brass UNI EN 12164 CW614N, nickel plated
- 2** 阀芯  
Valve
- 3** 密封圈  
Seals

NBR  
NBR
- 4** 弹簧  
Spring

AISI 302 不锈钢  
Stainless steel AISI 302
- 5** MA 快插接头  
MA line push-in fittings

-   
 -20° ÷ 80°C
-   
 2 ÷ 10 bar
-   
 0,2 bar
-   
 RoHS
-   
 REACH
-   
 SILICONE FREE



类型	OD1	D2	L1	g Δ
33 04 04 T	4	9	41	-
33 06 06 T	6	12	49	-
33 08 08 T	8	14	49	-

**i** 流体仅允许单向通过 (沿着阀体上箭头方向), 反向截止。

**i** The flow is allowed only in one way (the arrow direction engraved on the body) and stopped in the reverse way.

**建议的连接管路:**

PA11、PA12、PA6、PU聚氨酯(98 Shore A)

**Recommended tubings:**

PA11, PA12, PA6, Polyurethane PU (98 Shore A)

**应用领域:**

空气经过过滤和润滑处理的气动系统。

**Application field:**

Pneumatic installations fed with filtered, lubricated air.

# MV 22

MV  
LINE

线型快排阀

Line quick exhaust valve

1 本体  
Body

阳极氧化铝 Al2011  
Anodized aluminium Al2011

2 唇式密封圈  
Lip ring

PU-NBR, 仅用于1/4  
PU-NBR only for 1/4

3 密封圈  
Seals

NBR  
NBR

4 消声器  
Muffler

AISI 316 不锈钢  
Stainless steel AISI 316

5 挡圈  
Seeger

AISI 302 不锈钢  
Stainless steel AISI 302



-20° ÷ 80°C



2÷10 bar



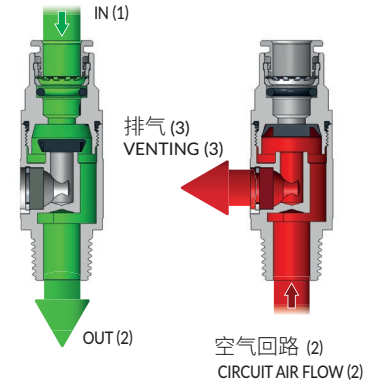
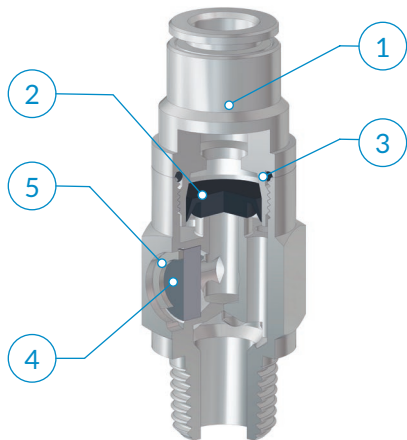
RoHS



REACH



SILICONE FREE



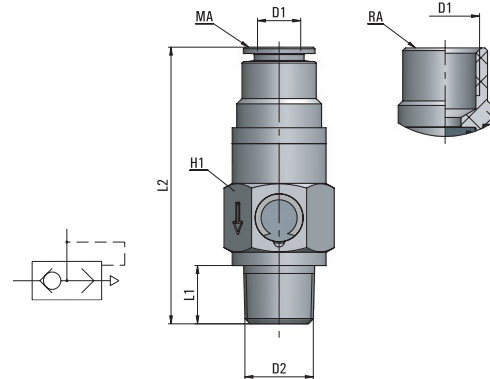
IN OUT OUT VENT  
1→2 2→3

(6 bar - Δp = 1 bar)

流量  
Flow rate

1/4	1050 NI/min	660 NI/min
3/8	3000 NI/min	1900 NI/min
1/2	3420 NI/min	2280 NI/min

类型	D1	D2	L1	L2	H1	g Δ
22 18 18 -RA	G1/8	R1/8	7,5	43	18	15,5
22 08 14 -MA	8	R1/4	11	52	18	18,2
22 14 14 -RA	G1/4	R1/4	11	49	18	17,5
22 10 38 -MA	10	R3/8	11,5	64,5	27	47,0
22 38 38 -RA	G3/8	R3/8	11,5	59,5	27	47,5
22 12 12 -MA	12	R1/2	14	76	34	84,0
22 12 12 -RA	G1/2	R1/2	14	69,5	34	87,5



**i** 断开供气时阀门能够迅速排出回路中空气;如果用于气缸,则可提高速度。

**建议的连接管路:**  
PA11、PA12、PA6、PU聚氨酯(98 Shore A)

**应用领域:**  
空气经过过滤和润滑处理的气动系统。

**i** This valve can easily vent the circuit in case of an air supply failure. If assembled on the cylinder port, it increases the cylinder speed.

**Recommended tubings:**  
PA11, PA12, PA6, Polyurethane PU (98 Shore A).

**Application field:**  
Pneumatic installations fed with filtered, lubricated air.

AP	55
AR	63
AV	221
CO	157
CX	255
EV	217
GU	119
GU Safety	135
GX	281
GX Safety	291
HP	317
MA	27
MB	41
MC	83
MF	235
MM	333
MO	93
MP	323
MT	339
MV	171
MX	241
MY	229
OX	261
PA	113
PE	79
PM	329
PN	67
PT	347
PU	131
PU Safety	149
PUX	287
PV	203
PVX	311
PX	249
QO	363
RA	101
RF	269
RT	355
RX	275
Tools	369
Tubings	375
VF	295
VT	359
VX	299

# MV 26

滑阀

Slide valve

1 本体  
Body

黄铜UNI EN 12164 CW614N镀铬  
Brass UNI EN 12164 CW614N, chrome plated

2 滑套  
Sleeve

阳极氧化铝Al6060  
Anodized aluminium Al6060

3 密封圈  
Seals

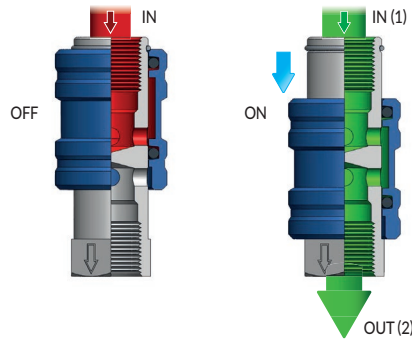
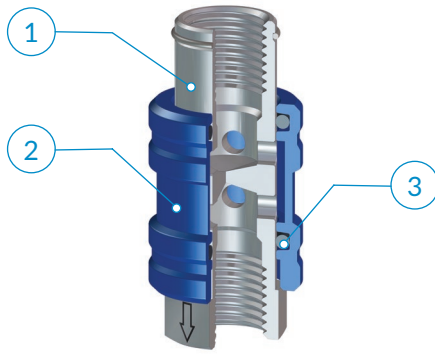
NBR  
NBR



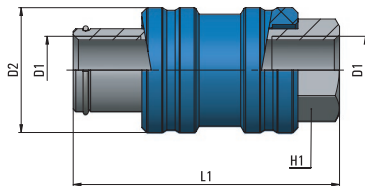
-20° + 80°C



10 bar



流量 Flow rate	IN OUT	
	1→2	
	(6 bar - Δp = 1bar)	
MV 26 00 M5	125	NI/min
MV 26 00 18	620	NI/min
MV 26 00 14	920	NI/min
MV 26 00 38	1520	NI/min
MV 26 00 12	2720	NI/min



类型	D1	D2	L1	H1	g ΔΔ
26 00 M5	M5x0,8	13	30,3	9	10,3
26 00 18	G1/8	21	46	14	40,0
26 00 14	G1/4	24	51,2	17	57,7
26 00 38	G3/8	31	58,9	22	117,2
26 00 12	G1/2	34,7	72,5	26	175,5

**i** 可用于气动系统的阻隔。滑套有开和关两个位置，当滑套背离六角方向滑动，阀门处于开的位置，气流按箭头方向流动；反之则阀门关闭，气源切断，并释放背压。

**建议的连接管路：**  
取决于与阀相连的接头类型。

**应用领域：**  
空气经过过滤和润滑处理的气动系统。

**i** The valve is used to section a pneumatic installation. Sliding the sleeve on the rod, both ON and OFF positions can be achieved. When the sleeve is against the rod hexagon, the flow goes in the arrow direction (ON); pushing it backwards the air supply is cut off and the installation is vented (OFF).

**Recommended tubings:**  
According to the fitting connected to the valve.

**Application field:**  
Pneumatic installations fed with filtered, lubricated air.

# MV 27

MV  
LINE

快排阀

Quick exhaust valve

1 本体  
Body

黄铜镀镍 UNI EN 12165 CW617N  
Brass UNI EN 12165 CW617N, nickel plated

2 唇式密封圈  
Lip ring

PU - NBR, 仅用于 M5  
PU - NBR only for M5

3 垫圈  
Gasket

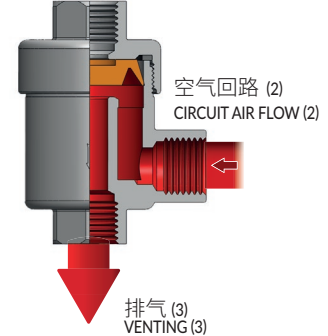
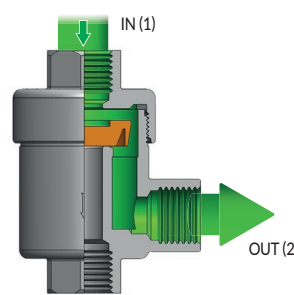
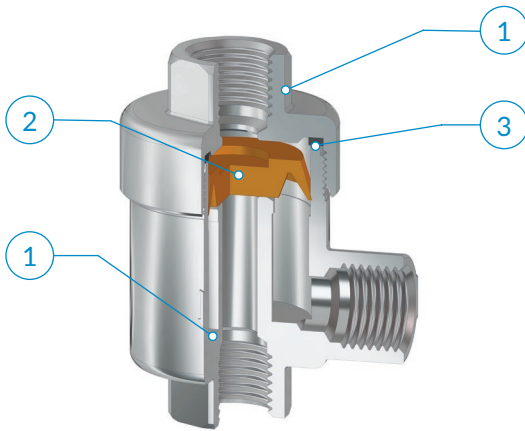
PA6  
PA6



-20° ÷ 80°C



2÷10 bar



IN OUT      OUT VENT  
1→2      2→3

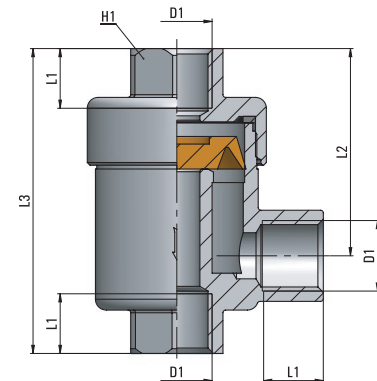
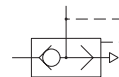
(6 bar - Δp = 1bar)

流量  
Flow rate

	133 NI/min	150 NI/min
M5	133 NI/min	150 NI/min
1/8	450 NI/min	760 NI/min
1/4	780 NI/min	1840 NI/min
3/8	1160 NI/min	2600 NI/min
1/2	1260 NI/min	5300 NI/min
3/4*	1530 NI/min	3300 NI/min

\*3bar 压力下的流量特性 - Flow rate at 3 bar

类型	D1	L1	L2	L3	H1	g
27 00 M5	M5x0,8	4,5	15,6	24,8	10	34,0
27 00 18	G1/8	8	28	42	15	84,8
27 00 14	G1/4	11	34,5	53	19	148,2
27 00 38	G3/8	12	36	55	21	149,2
27 00 12	G1/2	14	44	71	26	326,0
27 00 34	G3/4	18	52	86	32	451,6



**i** 断开供气时阀门能够迅速排出回路中空气;如果用于气缸,则可提高速度。

**建议的连接管路:**  
取决于与阀相连的接头类型。

**应用领域:**  
空气经过过滤和润滑处理的气动系统。

**i** This valve can easily vent the circuit in case of an air supply failure. If assembled on the cylinder port, it increases the cylinder speed.

**Recommended tubings:**  
According to the fitting connected to the valve.

**Application field:**  
Pneumatic installations fed with filtered, lubricated air.

AP	55
AR	63
AV	221
CO	157
CX	255
EV	217
GU	119
GU Safety	135
GX	281
GX Safety	291
HP	317
MA	27
MB	41
MC	83
MF	235
MM	333
MO	93
MP	323
MT	339
MV	171
MX	241
MY	229
OX	261
PA	113
PE	79
PM	329
PN	67
PT	347
PU	131
PU Safety	149
PUX	287
PV	203
PVX	311
PX	249
QO	363
RA	101
RF	269
RT	355
RX	275
Tools	369
Tubings	375
VF	295
VT	359
VX	299

# MV 32

梭阀

Shuttle valve

1 本体  
Body

阳极氧化铝 Al2011  
Anodized aluminium Al2011

2 阀芯  
Cartridge

黄铜 UNI EN 12164 CW614N  
Brass UNI EN 12164 CW614N

3 密封圈  
Seals

NBR  
NBR

4 滚珠  
Ball

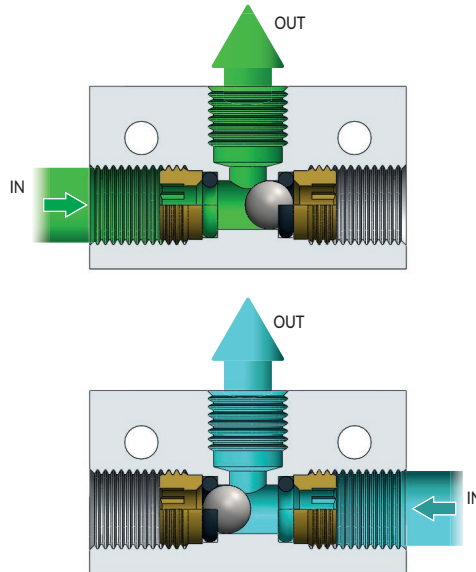
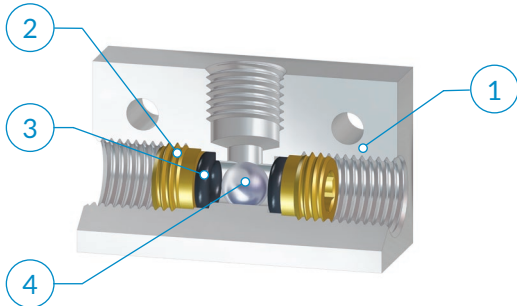
AISI 420 不锈钢  
Stainless steel AISI 420



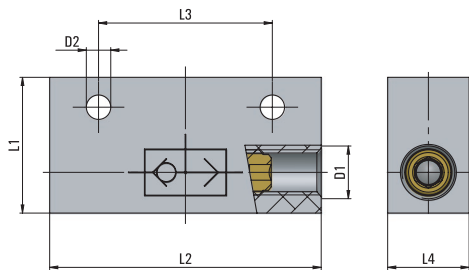
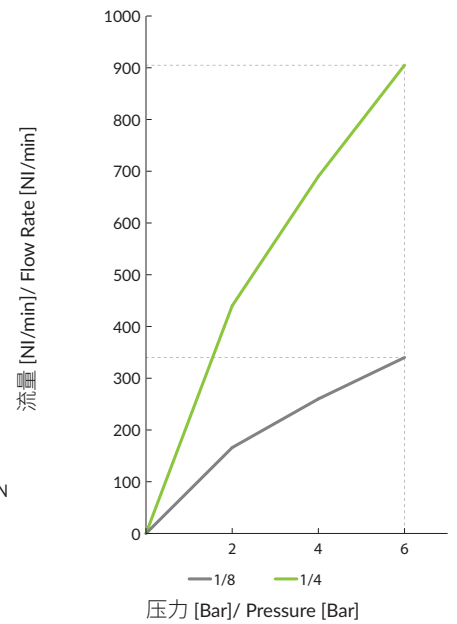
-20° ÷ 80°C



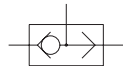
2÷10 bar



P = 6 bar - Δp = 1 bar



类型	D1	D2	L1	L2	L3	L4	g
32 00 18	G1/8	4,5	25	50	32	15	57,4
32 00 14	G1/4	5,5	30	52	35	20	74,0



**i** 逻辑或门控制, 当两个阀控制同一设备时, 来自任一控制阀的信号, 都将使梭阀动作, 以完成控制。

**i** It is used when two valves have to operate the same equipment. The signal, no matter from which of the two valves it comes, is received by the shuttle valve and transmitted to the device to operate.

**建议的连接管路:**  
取决于与阀相连的接头类型。

**Recommended tubings:**  
According to the fitting connected to the valve.

**应用领域:**  
空气经过过滤和润滑处理的气动系统。

**Application field:**  
Pneumatic installations fed with filtered, lubricated air.

# MV 46

MV  
LINE

气动开关

Pneumatic switch

- 1 本体  
Body

黄铜镀镍 UNI EN 12164 CW614N  
Brass UNI EN 12164 CW614N, nickel plated
- 2 手柄  
Handle
- 3 密封圈  
Seals

NBR  
NBR
- 4 弹簧  
Spring

AISI 302 不锈钢  
Stainless steel AISI 302
- 5 垫圈  
Gasket

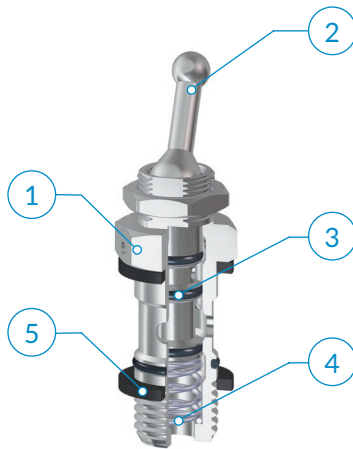
PA6  
PA6



-20° + 80°C

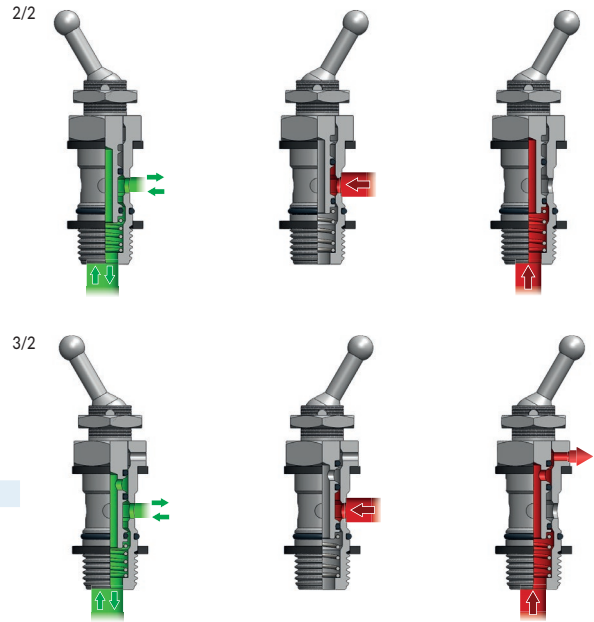


15 bar

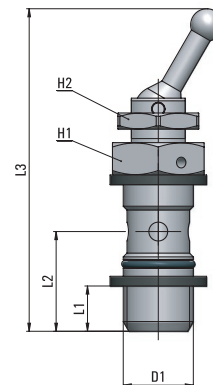


(6 bar - Δp = 1bar)

流量 Flow rate	1/8	235 NI/min
	1/4	265 NI/min



类型	D1	L1	L2	L3	H1	H2	g $\Delta$
46 00 18	G1/8	6,5	15,9	54,8	14	15	25,0
46 00 14	G1/4	8	18,7	59,8	17	15	41,0



**i** 这些阀能够通过简单操作控制杆的方式截断回路(开/关);有二通阀和三通阀两种,通过使用三通阀,除了可以断开回路外,还可以进行排气。

**i** The MV 46 is a pneumatic switch. It is available in a 2/2 and 3/2-way version. The goal of the 2/2 way switch is to cut off the flow in the circuit whenever needed by simply operating the lever. The 3/2 way valve cuts off the flow and vents to atmosphere the terminal part of the circuit.

**建议的连接管路:**  
取决于与阀相连的接头类型。

**Recommended tubings:**  
According to the fitting connected to the valve.

**应用领域:**  
空气经过过滤和润滑处理的气动系统。

**Application field:**  
Pneumatic installations fed with filtered, lubricated air.

- AP 55
- AR 63
- AV 221
- CO 157
- CX 255
- EV 217
- GU 119
- GU Safety 135
- GX 281
- GX Safety 291
- HP 317
- MA 27
- MB 41
- MC 83
- MF 235
- MM 333
- MO 93
- MP 323
- MT 339
- MV 171
- MX 241
- MY 229
- OX 261
- PA 113
- PE 79
- PM 329
- PN 67
- PT 347
- PU 131
- PU Safety 149
- PUX 287
- PV 203
- PVX 311
- PX 249
- QO 363
- RA 101
- RF 269
- RT 355
- RX 275
- Tools 369
- Tubings 375
- VF 295
- VT 359
- VX 299

# MV 48

线型气动开关

In-line pneumatic switch

1 本体  
Body

POM  
POM

2 气动开关  
Pneumatic switch

黄铜镀镍 UNI EN 12164 CW614N  
Brass UNI EN 12164 CW614N, nickel plated

3 弹簧  
Spring

AISI 302 不锈钢  
Stainless steel AISI 302

4 密封圈  
Seals

NBR  
NBR

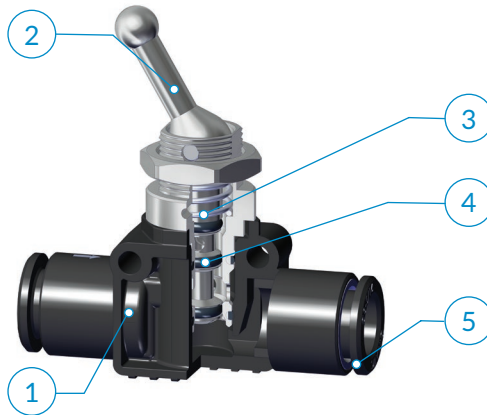
5 MB快插接头  
MB line push-in fittings



-20° ± 70°C

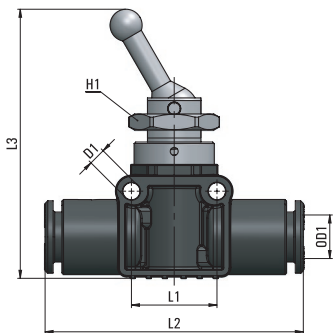


15 bar



(6 bar - Δp = 1bar)

流量 Flow rate	Ø6	185 NI/min
	Ø8	190 NI/min



类型	OD1	D1	L1	L2	L3	H1	g
48 06 06	6	3,2	16	47	48,8	15	30,5
48 08 08	8	3,2	16	48	50,3	15	32,0



**i** 这些阀能够通过简单操作控制杆的方式截断回路（开/关）；有二通阀和三通阀两种，通过使用三通阀，除了可以断开回路外，还可以进行排气。

**建议的连接管路：**  
PA11、PA12、PA6、PU聚氨酯(98 Shore A)

**应用领域：**  
空气经过过滤和润滑处理的气动系统。

**i** The MV 48 is a pneumatic switch. It is available in a 2/2 and 3/2-way version. The goal of the 2/2 way switch is to cut off the flow in the circuit whenever needed by simply operating the lever. The 3/2 way valve cuts off the flow and vents to atmosphere the terminal part of the circuit.

**Recommended tubings:**  
PA11, PA12, PA6, Polyurethane PU (98 Shore A).

**Application field:**  
Pneumatic installations fed with filtered, lubricated air.

# MV 51

MV  
LINE

带压力表接头

Pressure gauge fitting

1 本体  
Body

POM  
POM

2 螺纹  
Thread

黄铜镀镍 UNI EN 12164 CW614N  
Brass UNI EN 12164 CW614N, nickel plated

3 压力表  
Gauge

ABS  
ABS

4 MB快插接头  
MB line push-in fittings



0° ÷ 70°C



10 bar



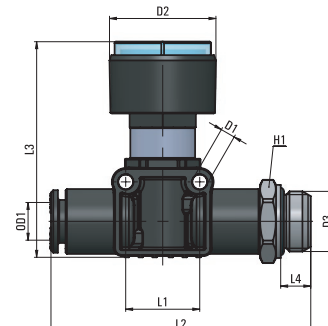
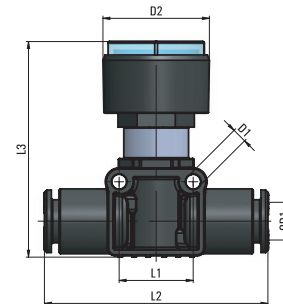
## 快插式 - Push-in version

类型	OD1	D1	D2	L1	L2	L3	g Δ
51 06 06	6	3,2	23	16	47	45,1	14,0
51 08 08	8	3,2	23	16	48	46,6	16,0



## 快插/螺纹式 - Push-in/threaded version

类型	OD1	D1	D2	D3	L1	L2	L3	L4	H1	g Δ
51 06 18	6	3,2	23	G1/8	16	53	45,1	5	13	21,0
51 06 14	6	3,2	23	G1/4	16	55	45,1	6,5	16	23,0
51 08 18	8	3,2	23	G1/8	16	54	46,6	5	14	23,0
51 08 14	8	3,2	23	G1/4	16	56	46,1	6,5	16	25,0



### 建议的连接管路:

PA11、PA12、PA6、PU聚氨酯(98 Shore A)  
精度:4

### Recommended tubings:

PA11, PA12, PA6, Polyurethane PU  
(98 Shore A).  
Accuracy: 4

### 应用领域:

空气经过过滤和润滑处理的气动系统。

### Application field:

Pneumatic installations fed with filtered,  
lubricated air.

AP	55
AR	63
AV	221
CO	157
CX	255
EV	217
GU	119
GU Safety	135
GX	281
GX Safety	291
HP	317
MA	27
MB	41
MC	83
MF	235
MM	333
MO	93
MP	323
MT	339
MV	171
MX	241
MY	229
OX	261
PA	113
PE	79
PM	329
PN	67
PT	347
PU	131
PU Safety	149
PUX	287
PV	203
PVX	311
PX	249
QO	363
RA	101
RF	269
RT	355
RX	275
Tools	369
Tubings	375
VF	295
VT	359
VX	299

# MV 50

软启动接头

Slow starter

- 1 本体  
Body

黄铜镀镍 UNI EN 12164 CW614N  
Brass UNI EN 12164 CW614N, nickel plated
- 2 针阀  
Needle
- 3 弹簧  
Spring

AISI 302 不锈钢  
Stainless steel AISI 302
- 4 密封圈  
Seals

NBR-PU  
NBR-PU
- 5 铰接本体  
Banjo Ring

黄铜镀镍 UNI EN 12165 CW617N  
Brass UNI EN 12165 CW617N, nickel plated
- 6 垫圈  
Gasket

PA6  
PA6

P1

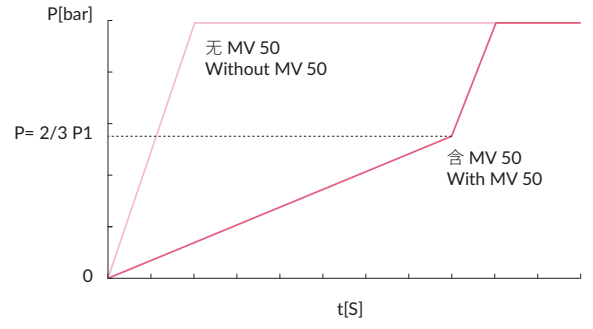
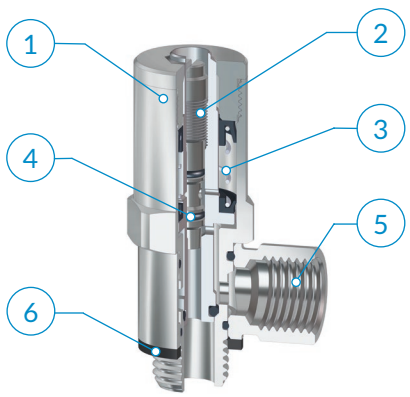
-20° ÷ 70°C

3 ÷ 10 bar

SILICONE FREE

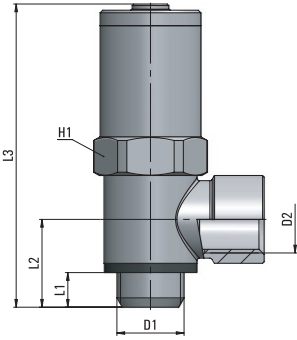
RoHS

REACH

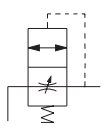


(6 bar - Δp = 1bar)

流量 Flow rate	MV50 1/4	1040 NI/min
	MV50 3/8	1900 NI/min
	MV50 1/2	2570 NI/min



类型	D1	D2	L1	L2	L3	H1	g
50 00 14	G1/4	G1/4	6,7	17	63,9	20	99,0
50 00 38	G3/8	G3/8	9,2	21	69,4	20	130,0
50 00 12	G1/2	G1/2	10,5	24,5	72,4	25	180,0



**i** 这种功能接头能够为系统逐渐增压，避免之前已经排放的系统在突然加压之后在线路上产生的所谓“水锤”效应。软启动接头由用户通过特殊调节螺丝以预设方式缓慢打开，逐渐将压力引入回路中，从而使执行机构逐渐到达工作位置，因此避免突然变化。回路压力上升速度取决于调节针阀旋转：顺时针阀旋转时就可以达到压力平稳上升的效果。

**i** This fitting allows for a progressive pressurization of the installation and prevents the actuators from being hit hard in case of sudden pressure feeding of the previously vented circuit. Depending on the desired spindle setting, the Slow Start Fitting will open gradually, pressure will progressively flow into the circuit and the actuators will go back to their working position without being hit. Pressure feeding speed is indeed determined by the rotation of the spindle. If turned clockwise, a very smooth pressurization will be achieved

**建议的连接管路：**  
取决于与阀相连的接头类型。

**Recommended tubings:**  
According to the fitting connected to the valve.

**应用领域：**  
空气经过过滤和润滑处理的气动系统。

**Application field:**  
Pneumatic installations fed with filtered, lubricated air.

# MV 52

MV  
LINE

感测接头

Threshold sensor

1 本体  
Body

黄铜镀镍 UNI EN 12164 CW614N  
Brass UNI EN 12164 CW614N, nickel plated

2 密封圈  
Seals

NBR-PU  
NBR-PU

3 MA快插接头  
MA line push-in fittings



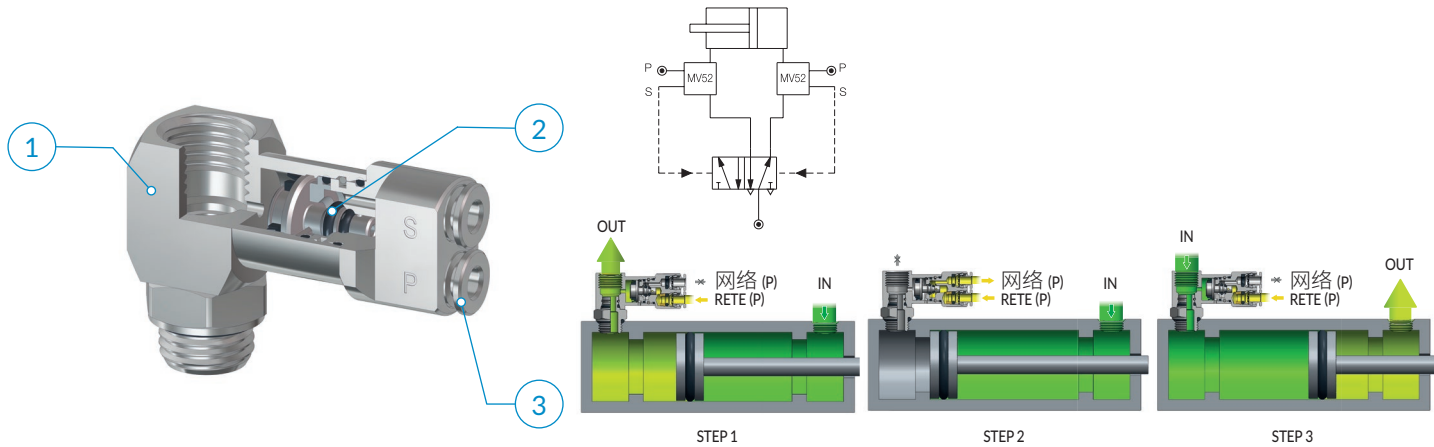
-20° + 80°C



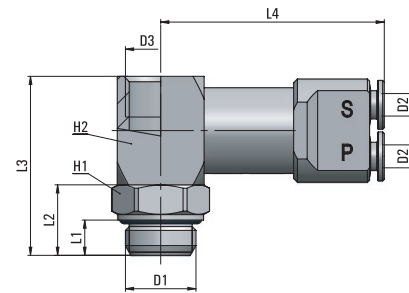
10 bar



工作压力 (bar) Working pressure (bar)	开关压力 (bar) Switching pressure (bar)
3	0,3
4	0,5
5	0,65
6	0,9
7	1
8	1,2
9	1,4
10	1,6



类型	D1	D2	D3	L1	L2	L3	L4	H1	H2	g $\Delta$
52 00 18	G1/8	4	G1/8	5	11	27	39	14	16	69,0
52 00 14	G1/4	4	G1/4	6,5	13	33	41	16	16	78,3
52 00 38	G3/8	4	G3/8	7	14,5	34,5	43,3	20	20	98,0



**i** 感测接头能够监测到压力下降并输出命令信号。直接安装在气缸上尤其有用，当活塞到达行程末端（被压消失），命令信号输出致方向控制阀换向。活塞在中间位置时，感测开关不起作用。该接头主要优点是用电信号来触动。

**i** Threshold sensor can detect a pressure drop and signal it with a command signal (s). This component turns out to be especially useful when assembled directly on the cylinder. When the piston completes its stroke (no more counter pressure available in the cylinder), a command signal is given out to a direction valve to have the piston change the stroke. Sole condition required for perfect component performance is that the piston has to complete its stroke. No intermediate positions are allowed. Major advantage of this component is to command the piston stroke changes without electrical connections.

**建议的连接管路：**  
取决于与阀相连的接头类型。

**Recommended tubings:**  
According to the fitting connected to the valve.

**应用领域：**  
空气经过过滤和润滑处理的气动系统。

**Application field:**  
Pneumatic installations fed with filtered, lubricated air.

AP	55
AR	63
AV	221
CO	157
CX	255
EV	217
GU	119
GU Safety	135
GX	281
GX Safety	291
HP	317
MA	27
MB	41
MC	83
MF	235
MM	333
MO	93
MP	323
MT	339
MV	171
MX	241
MY	229
OX	261
PA	113
PE	79
PM	329
PN	67
PT	347
PU	131
PU Safety	149
PUX	287
PV	203
PVX	311
PX	249
QO	363
RA	101
RF	269
RT	355
RX	275
Tools	369
Tubings	375
VF	295
VT	359
VX	299

# MV 55

关闭接头

Stop fitting

- 1** 本体  
Body

黄铜镀镍 UNI EN 12164 CW614N  
Brass UNI EN 12164 CW614N, nickel plated
- 2** 阀芯  
Valve
- 3** 弹簧  
Spring

AISI 302 不锈钢  
Stainless steel AISI 302
- 4** 密封圈  
Seals

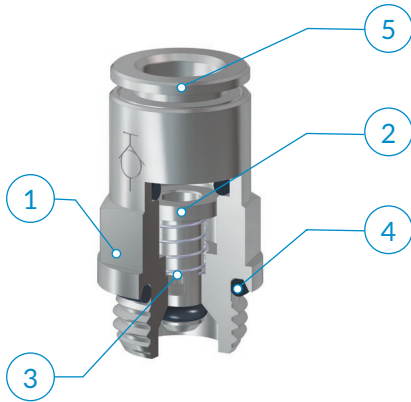
NBR  
NBR
- 5** MA快插接头  
MA line push-in fittings



-20° + 80°C

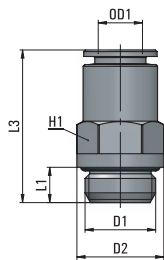
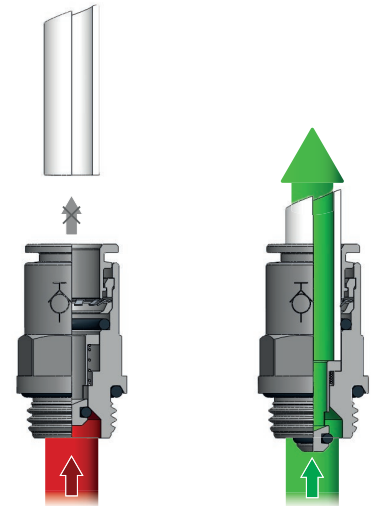


10 bar



流量  
Flow rate (6 bar - Δp = 1bar)

1/8	365 NI/min
1/4	380 NI/min



类型	D1	D2	D3	L1	L2	H1	g
55 06 18	G1/8	13,5	6	5	27,7	12	14,9
55 06 14	G1/4	16	6	6,5	27,7	12	18,0
55 08 18	G1/8	14,5	8	5	27,9	13	17,0
55 08 14	G1/4	16	8	6,5	27,9	13	20,4



**i** 该接头内置单向阀，只有当插入气管后，气路导通，任何意外导致的气管脱落，都将使气路关闭。

**i** This fitting is provided with a check valve that opens when inserting the tubing into the fitting. Only then the air flow is allowed. Should the tube accidentally get released, the valve would immediately close again and the air flow would stop.

**建议的连接管路:**

PA11、PA12、PA6、PU聚氨酯(98 Shore A)

**Recommended tubings:**

PA11, PA12, PA6, Polyurethane PU (98 Shore A).

**应用领域:**

空气经过过滤和润滑处理的气动系统。

**Application field:**



Pneumatic installations fed with filtered, lubricated air.

# MV 11-14

MV  
LINE

消声器

Air mufflers

	本体 Body	消声器 Muffler	密封圈 Seals		
MV11-FE	黄铜镀镍 UNI EN 12164 CW614N Brass UNI EN 12164 CW614N, nickel plated	AISI 304 不锈钢 Stainless steel AISI 304		0 ÷ 12 bar	-10 ÷ 70 °C
MV11-FEP	PA6	AISI 304 不锈钢 Stainless steel AISI 304		0 ÷ 12 bar	-10 ÷ 70 °C
MV11-PL	POM			0 ÷ 6 bar	-10 ÷ 70 °C
MV11-CO - MV11-CQ MV11-BE - MV11-VE MV11-P	黄铜 UNI EN 12164 CW614N Brass UNI EN 12164 CW614N	烧结青铜 Sintered bronze 89/11		0 ÷ 12 bar	-10 ÷ 70 °C
MV14	黄铜镀镍 UNI EN 12164 CW614N Brass UNI EN 12164 CW614N, nickel plated	烧结青铜 Sintered bronze 89/11	NBR NBR	0 ÷ 10 bar	-10 ÷ 70 °C

6 bar时的噪音水平 - Noise level at 6 bar

类型	1/8	1/4	3/8	1/2
MV11-FE	74 dB	72 dB	88 dB	90 dB
MV11-FEP	74 dB	72 dB	88 dB	90 dB
MV11-CO	70 dB	67 dB	77 dB	80 dB
MV11-CQ	70 dB	67 dB	77 dB	80 dB
MV11-BE	75 dB	81 dB	82 dB	85 dB
MV11-P	72 dB	73 dB	84 dB	88 dB
MV11-PL	87 dB	84 dB	90 dB	90 dB
MV11-VE	72 dB	73 dB	84 dB	88 dB


过滤阈值 - Filtration threshold

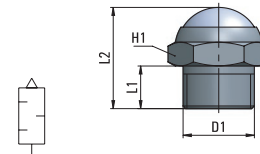
类型	
MV11-FE	100-200 µm
MV11-FEP	100-200 µm
MV11-CO	35 µm
MV11-CQ	35 µm
MV11-BE	35 µm
MV11-P	80 µm
MV11-PL	-
MV11-VE	80 µm

## MV 11-FE

黄铜-不锈钢消音器

Air muffler with stainless steel wire


类型	D1	L1	L2	H1	g 
11 00 18-FE	G1/8	6	15	13	6,2
11 00 14-FE	G1/4	8	19	16	10,9
11 00 38-FE	G3/8	7,5	19	19	16,0
11 00 12-FE	G1/2	10	22	24	28,5

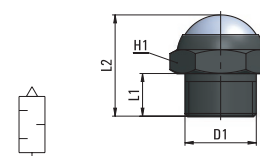


## MV 11-FEP

尼龙-不锈钢消音器

Air muffler with stainless steel wire


类型	D1	L1	L2	H1	g 
11 00 18-FEP	G1/8	6	16	13	2,0
11 00 14-FEP	G1/4	8	19	16	3,5
11 00 38-FEP	G3/8	7,5	19	19	4,9
11 00 12-FEP	G1/2	10	23	24	8,4

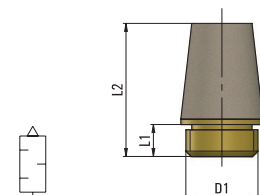


## MV 11-CO

烧结青铜消音器

Sintered bronze air muffler

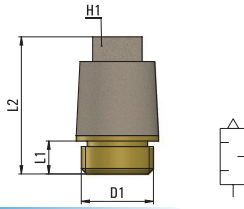
类型	D1	L1	L2	g 
11 00 M5-CO	M5x0,8	4,5	14,5	1,5
11 00 18-CO	G1/8	6	22	6,2
11 00 14-CO	G1/4	6	26	11,0
11 00 38-CO	G3/8	8	38,5	27,3
11 00 12-CO	G1/2	9	41	42,0



AP 55  
AR 63  
AV 221  
CO 157  
CX 255  
EV 217  
GU 119  
GU Safety 135  
GX 281  
GX Safety 291  
HP 317  
MA 27  
MB 41  
MC 83  
MF 235  
MM 333  
MO 93  
MP 323  
MT 339  
MV 171  
MX 241  
MY 229  
OX 261  
PA 113  
PE 79  
PM 329  
PN 67  
PT 347  
PU 131  
PU Safety 149  
PUX 287  
PV 203  
PVX 311  
PX 249  
QO 363  
RA 101  
RF 269  
RT 355  
RX 275  
Tools 369  
Tubings 375  
VF 295  
VT 359  
VX 299

## MV 11-CQ

烧结青铜消音器

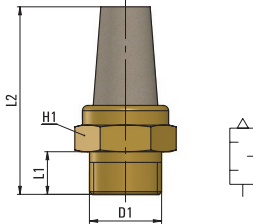


Sintered bronze air muffler

类型	D1	L1	L2	H1	g $\Delta$
11 00 18-CQ	G1/8	6	22	7	6,0
11 00 14-CQ	G1/4	6	26	9	11,9
11 00 38-CQ	G3/8	8	38	10	25,8
11 00 12-CQ	G1/2	9	41	14	46,1

## MV 11-BE

烧结青铜消音器

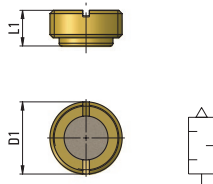


Sintered bronze air muffler

类型	D1	L1	L2	H1	g $\Delta$
11 00 M5-BE	M5x0,8	4	16	8	2,0
11 00 18-BE	G1/8	6	28	13	8,8
11 00 14-BE	G1/4	8	32	16	15,2
11 00 38-BE	G3/8	7,5	41	19	25,7
11 00 12-BE	G1/2	10	46,5	24	47,0

## MV 11-P

平垫消音器

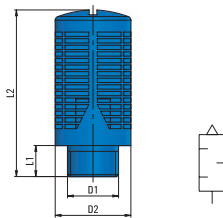


Flat muffler

类型	D1	L1	g $\Delta$
11 00 18-P	G1/8	4,5	1,3
11 00 14-P	G1/4	6,5	3,5
11 00 38-P	G3/8	7,5	6,9
11 00 12-P	G1/2	8,5	11,2

## MV 11-PL

塑料球消音器

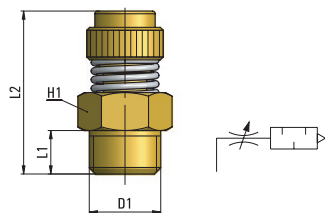


Plastic ball muffler

类型	D1	D2	L1	L2	g $\Delta$
11 00 18-PL	G1/8	15	6	32,5	3,4
11 00 14-PL	G1/4	19,5	8	43	6,5
11 00 38-PL	G3/8	24,5	11	58	13,5
11 00 12-PL	G1/2	24,5	11	58	15,1

## MV 11-VE

铜制消音器带排气控制

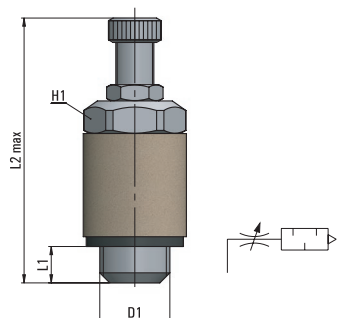


Exhaust control with sintered bronze air muffler

类型	D1	L1	L2 max	H1	g $\Delta$
11 00 18-VE	G1/8	6	29	13	16,5
11 00 14-VE	G1/4	8	33	15	25,6
11 00 38-VE	G3/8	11	36	22	50,3
11 00 12-VE	G1/2	11	37	22	58,7

## MV 14

消音器带排气控制



Exhausting Control with muffler

类型	D1	L1	L2 max	H1	g $\Delta$
14 00 M5	M5x0,8	3	39,1	8	6,0
14 00 18	G1/8	4,9	41,7	14	28,9
14 00 14	G1/4	6,4	48,8	17	50,6
14 00 38	G3/8	6,7	62,2	20	92,9

# MV 24-25/53-54

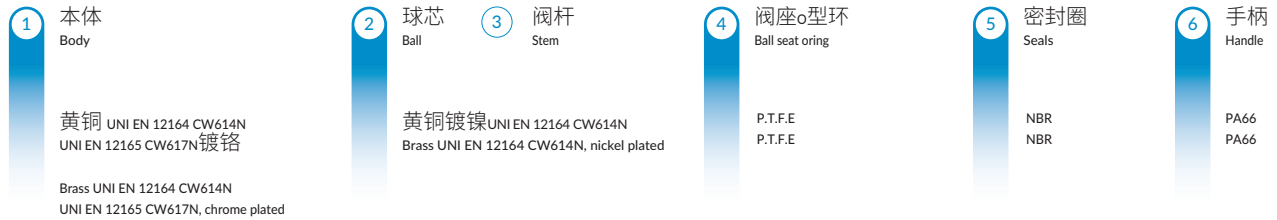
球阀

Ball valves

MV24 - MV25



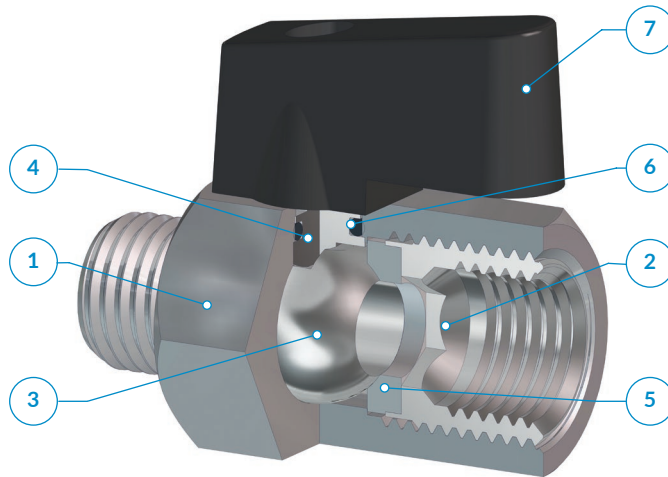
MV53 - MV54



-20° ÷ 80°C



10 bar



应用领域：  
气动、液压和油压系统。

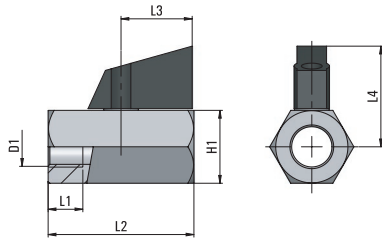
Application fields:  
Pneumatic, hydraulic and oleodynamic circuits.

AP	55
AR	63
AV	221
CO	157
CX	255
EV	217
GU	119
GU Safety	135
GX	281
GX Safety	291
HP	317
MA	27
MB	41
MC	83
MF	235
MM	333
MO	93
MP	323
MT	339
MV	171
MX	241
MY	229
OX	261
PA	113
PE	79
PM	329
PN	67
PT	347
PU	131
PU Safety	149
PUX	287
PV	203
PVX	311
PX	249
QO	363
RA	101
RF	269
RT	355
RX	275
Tools	369
Tubings	375
VF	295
VT	359
VX	299

## MV 24

内螺纹-内螺纹球阀

Ball valve, female

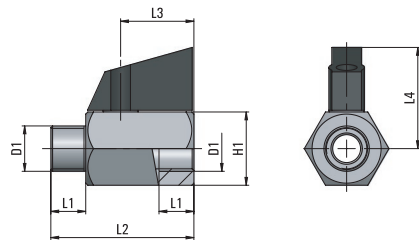


类型	D1	L1	L2	L3	L4	H1	g $\Delta$
24 00 18	G1/8	8	39	20,5	29	20	90,0
24 00 14	G1/4	10	39	20,5	29	20	95,6
24 00 38	G3/8	10	42	20,5	29	20	83,3
24 00 12	G1/2	10,5	47	20,5	31	24	128,0

## MV 25

外螺纹-内螺纹球阀

Ball valve, male

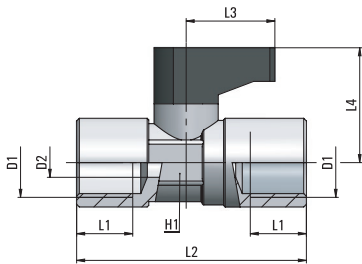


类型	D1	L1	L2	L3	L4	H1	g $\Delta$
25 00 18	G1/8	8	39	20,5	29	20	84,0
25 00 14	G1/4	10	39	20,5	29	20	79,7
25 00 38	G3/8	10	42	20,5	29	20	77,5
25 00 12	G1/2	10,5	47	20,5	31	24	115,5

## MV 53

内螺纹-内螺纹球阀

Ball valve, female

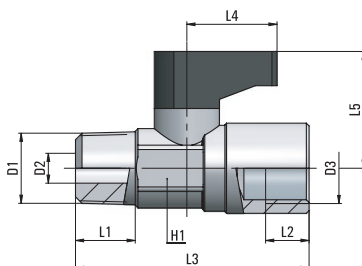


类型	D1	D2	L1	L2	L3	L4	H1	g $\Delta$
53 00 18	G1/8	5,5	8	36,5	19	21,5	14	37,3
53 00 14	G1/4	5,5	11	43	19	21,5	14	49,5
53 00 38	G3/8	8	10,5	43	24	24	17	74,5
53 00 12	G1/2	10	12	49	34	27	21	138,9

## MV 54

锥形外螺纹-内螺纹球阀

Ball valve, taper male-female



类型	D1	D2	D3	L1	L2	L3	L4	L5	H1	g $\Delta$
54 00 18	R1/8	5,5	G1/8	8	8	35,5	19	21,5	14	34,3
54 00 14	R1/4	5,5	G1/4	11	11	40,5	19	21,5	14	43,2
54 00 38	R3/8	8	G3/8	11,5	10,5	43	24	24	17	67,3
54 00 12	R1/2	10	G1/2	15	12	50	34	27	21	89,5