

RA LINE



CN

黄铜镀镍标准接头

RA系列(亦称“附件系列”或“标准管接头系列”)包含多种组件,例如直通过接头、异径接头、转换接头、堵头、软管接头、L型与T型及十字型接头等。凭借其丰富的品种选择,该系列管接头可完美完美补充各种连接件产品范围。所有零件均采用镀镍黄铜材质制造。

EN

Brass Nickel-Plated Standard Fittings

The RA line, also known as the “Accessories line” or the “Standard fittings line” consists of a wide variety of components, such as Nipples, Reduction pieces, Connections, Plugs, Hose connections, L-T and Cross fittings. Due to the multiple auxiliary functions of this line, the RA fittings are the right complement for other ranges. All components are brass nickel-plated.

RA Line

1 本体
Body

黄铜镀镍 UNI EN 12164 CW614N - UNI EN 12165 CW617N
Brass UNI EN 12164 CW614N - UNI EN 12165 CW617N, nickel plated

2 密封圈
Seals

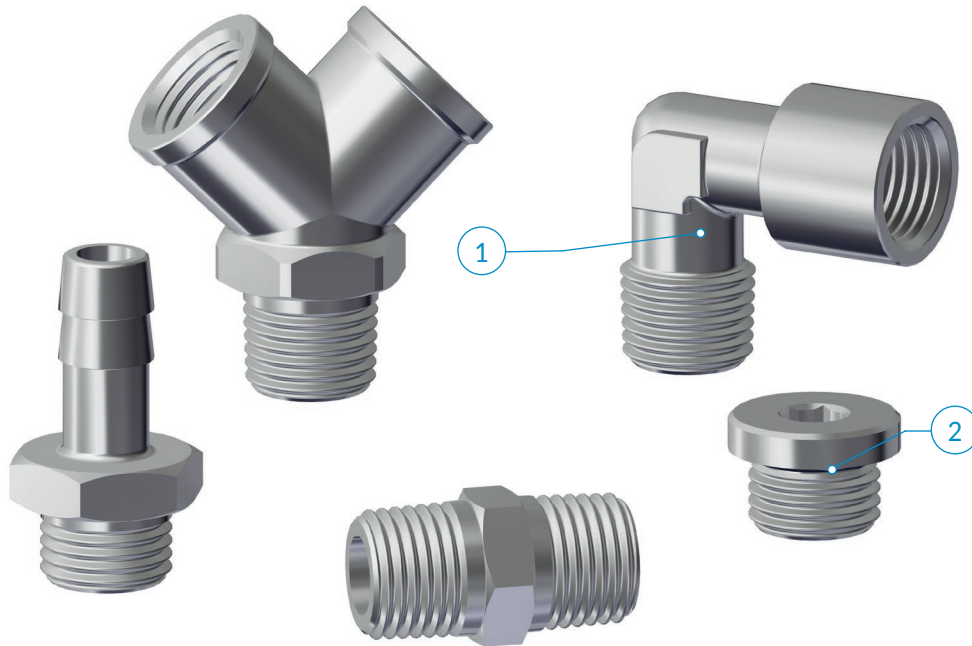
NBR
NBR



-40° ÷ 150°C



60 bar



	M5x0,8	M10x1	M12x1	G1/8	G1/4	G3/8	G1/2	G3/4	R1/8	R1/4	R3/8	R1/2	R3/4	R1
	●	●	●	●	●	●	●	●	●	●	●	●	●	●

应用领域:
气动、液压和油压系统。

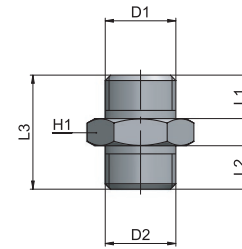
Application fields:
Pneumatic, hydraulic and oleodynamic circuits

RA 11

直螺纹转接头

Nipple, parallel

类型	D1	D2	L1	L2	L3	H1	g Δ
11 M5 M5	M5x0,8	M5x0,8	5	5	11,5	8	2,0
11 M5 18	M5x0,8	G1/8	4	6	14,5	14	8,0
11 18 18	G1/8	G1/8	6	6	16,5	14	8,0
11 18 14	G1/8	G1/4	6	8	19	17	16,2
11 18 38	G1/8	G3/8	6	9	20	19	19,0
11 14 14	G1/4	G1/4	8	8	21	17	14,0
11 14 38	G1/4	G3/8	8	9	22	19	23,5
11 14 12	G1/4	G1/2	8	10	23,5	24	32,0
11 38 38	G3/8	G3/8	9	9	23	19	23,0
11 38 12	G3/8	G1/2	9	10	24,5	24	31,8
11 12 12	G1/2	G1/2	10	10	25,5	24	34,5

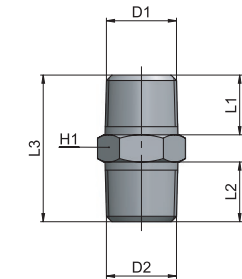


RA 12

锥螺纹转接头

Nipple, taper

类型	D1	D2	L1	L2	L3	H1	g Δ
12 18 18	R1/8	R1/8	7,5	7,5	19,5	12	8,0
12 18 14	R1/8	R1/4	8	11	24	14	13,2
12 18 38	R1/8	R3/8	8	11,5	24,5	17	20,0
12 14 14	R1/4	R1/4	11	11	27	14	15,2
12 14 38	R1/4	R3/8	11	11,5	27,5	17	19,9
12 14 12	R1/4	R1/2	11	14	30,5	22	35,6
12 38 38	R3/8	R3/8	11,5	11,5	28	17	25,1
12 38 12	R3/8	R1/2	11,5	14	31	22	35,0
12 12 12	R1/2	R1/2	14	14	33,5	22	41,2
12 12 34	R1/2	R3/4	14	16,5	37	27	60,7
12 34 34	R3/4	R3/4	16,5	16,5	39,5	27	79,7
12 34 1	R3/4	R1"	16,5	19	42,5	34	112,4
12 1 1	R1"	R1"	19	19	45,5	34	127,5

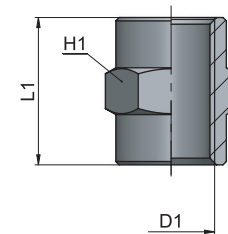


RA 13

内螺纹转接头

Joint piece

类型	D1	L1	H1	g Δ
13 00 M5	M5x0,8	11	8	2,0
13 00 18	G1/8	15	14	10,5
13 00 14	G1/4	22	17	19,1
13 00 38	G3/8	23	22	34,5
13 00 12	G1/2	28	26	47,2
13 00 34	G3/4	32	32	98,4
13 00 1	G1"	35	38	97,8

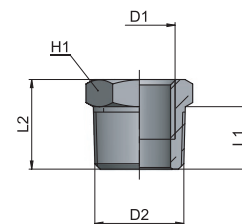


RA 14

内外螺纹减径接头

Taper female-male reducing connector

类型	D1	D2	L1	L2	H1	g Δ
14 18 14	G1/8	R1/4	11	16	14	8,9
14 18 38	G1/8	R3/8	11,5	16,5	17	20,2
14 18 12	G1/8	R1/2	14	19,5	22	34,8
14 14 38	G1/4	R3/8	11,5	16,5	17	12,6
14 14 12	G1/4	R1/2	14	19,5	22	31,5
14 38 12	G3/8	R1/2	14	19,5	22	24,1
14 38 34	G3/8	R3/4	16,5	23	27	70,0
14 12 34	G1/2	R3/4	16,5	23	27	41,0
14 12 1	G1/2	R1"	19	27	34	102,5
14 34 1	G3/4	R1"	19	27	34	74,2

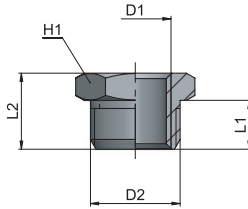


AP 55
AR 63
AV 221
CO 157
CX 255
EV 217
GU 119
GU Safety 135
GX 281
GX Safety 291
HP 317
MA 27
MB 41
MC 83
MF 235
MM 333
MO 93
MP 323
MT 339
MV 171
MX 241
MY 229
OX 261
PA 113
PE 79
PM 329
PN 67
PT 347
PU 131
PU Safety 149
PUX 287
PV 203
PVX 311
PX 249
QO 363
RA 101
RF 269
RT 355
RX 275
Tools 369
Tubings 375
VF 295
VT 359
VX 299

RA 15

内外螺纹减径接头

Parallel female-male reducing connector

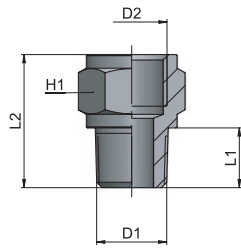


类型	D1	D2	L1	L2	H1	g Δ
15 M5 18	M5x0,8	G1/8	6	10,5	14	8,0
15 18 14	G1/8	G1/4	8	13	17	10,5
15 18 38	G1/8	G3/8	9	14	19	19,3
15 18 12	G1/8	G1/2	10	15,5	24	30,7
15 14 38	G1/4	G3/8	9	14	19	12,8
15 14 12	G1/4	G1/2	10	15,5	24	28,5
15 38 12	G3/8	G1/2	10	15,5	24	20,0
15 38 34	G3/8	G3/4	11	17,5	30	54,1
15 12 34	G1/2	G3/4	11	17,5	30	36,0
15 34 1	G3/4	G1"	11,5	18,5	36	60,3

RA 16

内外螺纹转接头

Adaptor male-female, taper

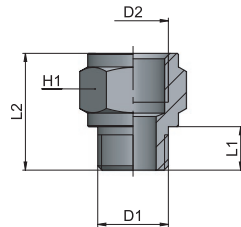


类型	D1	D2	L1	L2	H1	g Δ
16 18 18	R1/8	G1/8	8	18	14	11,1
16 18 14	R1/8	G1/4	8	21,5	17	18,0
16 18 38	R1/8	G3/8	8	22,5	22	29,8
16 14 14	R1/4	G1/4	11	24,5	17	20,5
16 14 38	R1/4	G3/8	11	25,5	22	42,0
16 14 12	R1/4	G1/2	11	29	24	40,0
16 38 38	R3/8	G3/8	11,5	26	22	42,0
16 38 12	R3/8	G1/2	11,5	29,5	24	40,0
16 12 12	R1/2	G1/2	14	32	26	57,0

RA 17

内外螺纹转接头

Adaptor male-female, parallel

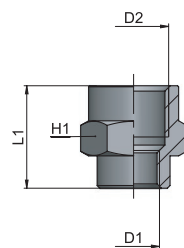


类型	D1	D2	L1	L2	H1	g Δ
17 M5 18	M5x0,8	G1/8	4	14,5	14	7,0
17 18 18	G1/8	G1/8	6	16,5	14	10,7
17 18 14	G1/8	G1/4	6	19,5	17	16,5
17 18 38	G1/8	G3/8	6	20,5	22	29,5
17 14 14	G1/4	G1/4	8	21,5	17	19,0
17 14 38	G1/4	G3/8	8	22,5	22	32,0
17 14 12	G1/4	G1/2	8	26	24	37,0
17 38 38	G3/8	G3/8	9	23,5	22	36,0
17 38 12	G3/8	G1/2	9	27	24	37,0
17 12 12	G1/2	G1/2	10	28	26	52,5

RA 18

减径接头

Reduction joint piece



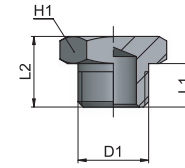
类型	D1	D2	L1	H1	g Δ
18 M5 18	M5x0,8	G1/8	13,5	14	10,0
18 18 14	G1/8	G1/4	19	17	18,0
18 18 38	G1/8	G3/8	20	22	36,0
18 14 38	G1/4	G3/8	22,5	22	41,0
18 14 12	G1/4	G1/2	26	24	31,0
18 38 12	G3/8	G1/2	26	24	35,5
18 12 34	G1/2	G3/4	30	32	82,1

RA 19

直螺纹堵头

Parallel plug

类型	D1	L1	L2	H1	g
19 00 M5	M5x0,8	4	7	8	2,0
19 00 18	G1/8	6	10	14	7,5
19 00 14	G1/4	8	12,5	17	12,4
19 00 38	G3/8	9	13,5	19	18,0
19 00 12	G1/2	10	15,5	24	31,0
19 00 34	G3/4	11	16,5	30	48,9
19 00 1	G1"	13	19	38	71,0

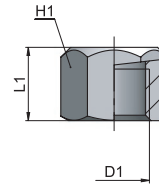


RA 20

内螺纹堵头

Female plug

类型	D1	L1	H1	g
20 00 18	G1/8	10	14	9,6
20 00 14	G1/4	13,5	17	16,7
20 00 38	G3/8	14	20	21,3
20 00 12	G1/2	16,5	24	32,0
20 00 34	G3/4	18,5	30	52,2
20 00 1	G1"	20	38	98,7

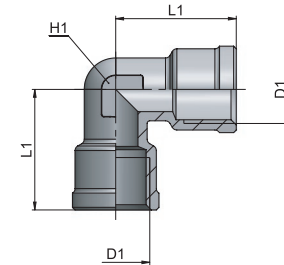


RA 21

内螺纹直角转接头

Female elbow

类型	D1	L1	H1	g
21 18 18	G1/8	18,5	10	15,0
21 14 14	G1/4	22,5	12	25,5
21 38 38	G3/8	25,5	15	44,2
21 12 12	G1/2	30	19	73,2

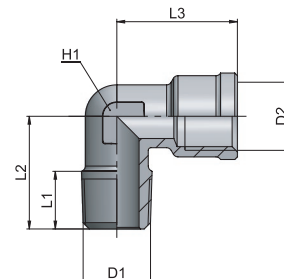


RA 22

内外螺纹直角转接头

Male-female elbow

类型	D1	D2	L1	L2	L3	H1	g
22 18 18	R1/8	G1/8	8,2	17	18,5	10	12,6
22 14 14	R1/4	G1/4	11	21,5	22,5	12	23,9
22 38 38	R3/8	G3/8	12	24,5	25,5	15	39,7
22 12 12	R1/2	G1/2	14	29,5	30	19	71,5
22 34 34	R3/4	G3/4	16	33	36,5	25	98,1
22 1 1	R1"	G1"	17	39	45	30	157,5

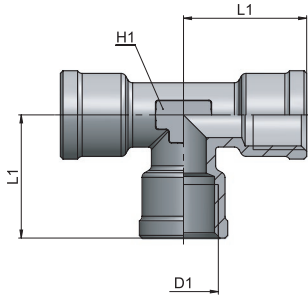


AP 55
AR 63
AV 221
CO 157
CX 255
EV 217
GU 119
GU Safety 135
GX 281
GX Safety 291
HP 317
MA 27
MB 41
MC 83
MF 235
MM 333
MO 93
MP 323
MT 339
MV 171
MX 241
MY 229
OX 261
PA 113
PE 79
PM 329
PN 67
PT 347
PU 131
PU Safety 149
PUX 287
PV 203
PVX 311
PX 249
QO 363
RA 101
RF 269
RT 355
RX 275
Tools 369
Tubings 375
VF 295
VT 359
VX 299

RA 23

内螺纹T型转接头

Female T

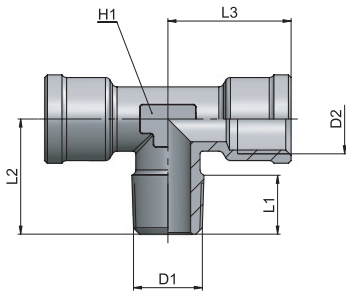


类型	D1	L1	H1	g Δ
23 18 18	G1/8	18,5	10	21,0
23 14 14	G1/4	22,5	12	36,6
23 38 38	G3/8	25,5	15	61,3
23 12 12	G1/2	30	19	98,2

RA 24

内外螺纹正T型转接头

Male-female stud T

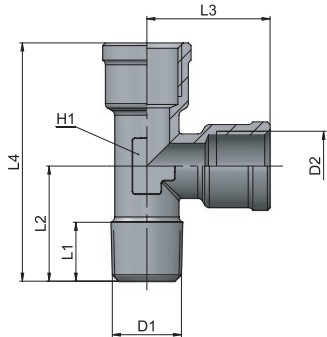


类型	D1	D2	L1	L2	L3	H1	g Δ
24 18 18	R1/8	G1/8	8,1	17	18,5	10	18,7
24 14 14	R1/4	G1/4	11	21,5	22,5	12	33,5
24 38 38	R3/8	G3/8	12	24,5	25,5	15	57,7
24 12 12	R1/2	G1/2	14	29,5	30	19	96,4
24 34 34	R3/4	G3/4	17	34,5	35,5	22	176,7
24 1 1	R1"	G1"	19	40,5	40,5	28	296,8

RA 25

内外螺纹直T型转接头

Male-female, lateral T

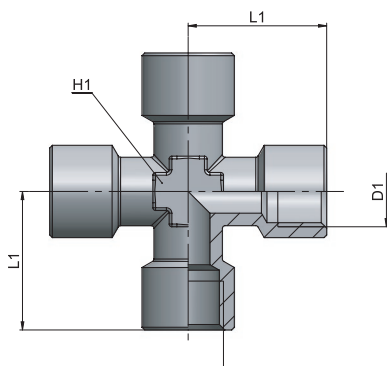


类型	D1	D2	L1	L2	L3	L4	H1	g Δ
25 18 18	R1/8	G1/8	8,2	17	18,5	35,5	10	18,7
25 14 14	R1/4	G1/4	11	21,5	22,5	44	12	34,0
25 38 38	R3/8	G3/8	12	24,5	25,5	50	15	57,5
25 12 12	R1/2	G1/2	14	29,5	30	59,5	19	98,0

RA 26

内螺纹十字接头

Female cross



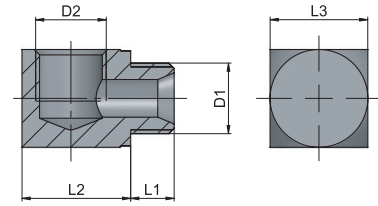
类型	D1	L1	H1	g Δ
26 18 18	G1/8	21	10	41,0
26 14 14	G1/4	25,5	13	73,9
26 38 38	G3/8	28	17	112,0

RA 27

内外螺纹直角转接头

Male-female elbow

类型	D1	D2	L1	L2	L3	g	Δ
27 M5 M5	M5x0,8	M5x0,8	5	10	9	6,0	
27 18 18	G1/8	G1/8	6	14	13	14,0	
27 14 14	G1/4	G1/4	8	20	18	40,0	

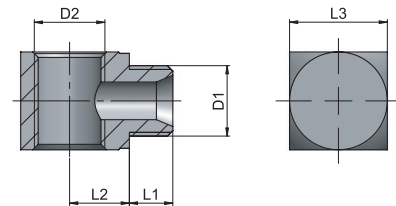


RA 28

内外螺纹正T型转接头

Male-female stud T

类型	D1	D2	L1	L2	L3	g	Δ
28 M5 M5	M5x0,8	M5x0,8	5	5,5	9	5,0	
28 18 18	G1/8	G1/8	6	7,5	13	6,0	
28 14 14	G1/4	G1/4	8	11	18	36,0	



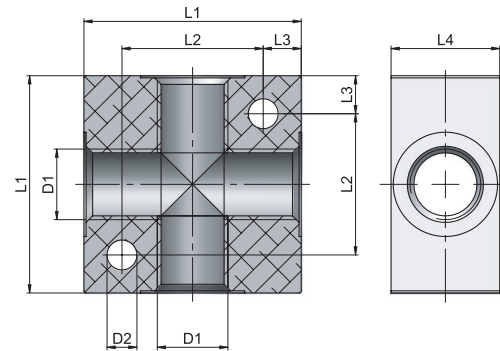
RA 29

气路分配座 4孔

Manifold, 4 ways

类型	D1	D2	L1	L2	L3	L4	g	Δ
29 00 18	G1/8	4,5	25	17	4	16	16,0	
29 00 14	G1/4	5,5	40	26	7	20	64,0	
29 00 38	G3/8	5,5	50	34	8	25	118,5	
29 00 12	G1/2	5,5	50	34	8	30	130,0	

采用非阳极氧化铝材质的壳体 - Body in non-anodized Aluminum



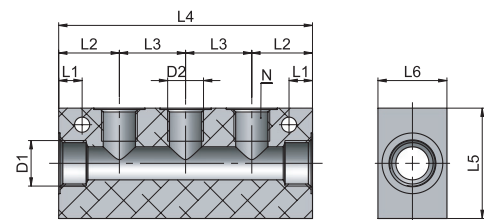
RA 29 S

气路分配座

Manifold, single

类型	D1	D2	N	L1	L2	L3	L4	L5	L6	g	Δ
29 14 18 S3	G1/4	G1/8	3	4,5	18	18	72	30	20	91,7	
29 14 18 S4	G1/4	G1/8	4	4,5	18	18	90	30	20	115,7	
29 14 18 S5	G1/4	G1/8	5	4,5	18	18	108	30	20	140,5	
29 38 14 S3	G3/8	G1/4	3	8,5	22	24	92	40	25	191,6	
29 38 14 S4	G3/8	G1/4	4	8,5	22	24	116	40	25	244,3	
29 38 14 S5	G3/8	G1/4	5	8,5	22	24	140	40	25	296,7	

采用非阳极氧化铝材质的壳体 - Body in non-anodized Aluminum

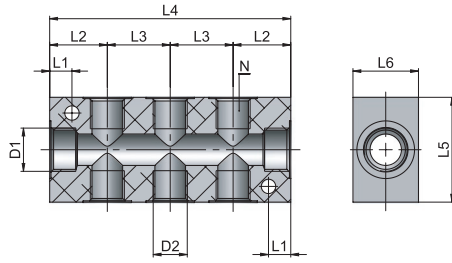


AP 55
AR 63
AV 221
CO 157
CX 255
EV 217
GU 119
GU Safety 135
GX 281
GX Safety 291
HP 317
MA 27
MB 41
MC 83
MF 235
MM 333
MO 93
MP 323
MT 339
MV 171
MX 241
MY 229
OX 261
PA 113
PE 79
PM 329
PN 67
PT 347
PU 131
PU Safety 149
PUX 287
PV 203
PVX 311
PX 249
QO 363
RA 101
RF 269
RT 355
RX 275
Tools 369
Tubings 375
VF 295
VT 359
VX 299

RA 29 D

气路分配座

Manifold, double



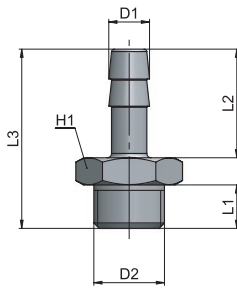
类型	D1	D2	N	L1	L2	L3	L4	L5	L6	g Δ
29 14 18 D3	G1/4	G1/8	3+3	4,5	18	18	72	30	20	85,7
29 14 18 D4	G1/4	G1/8	4+4	4,5	18	18	90	30	20	107,6
29 14 18 D5	G1/4	G1/8	5+5	4,5	18	18	108	30	20	129,1
29 38 14 D3	G3/8	G1/4	3+3	8,5	22	24	92	40	25	179,4
29 38 14 D4	G3/8	G1/4	4+4	8,5	22	24	116	40	25	226,1
29 38 14 D5	G3/8	G1/4	5+5	8,5	22	24	140	40	25	274,1

采用非阳极氧化铝材质的壳体 - Body in non-anodized Aluminum

RA 30

宝塔接头

Hose connector

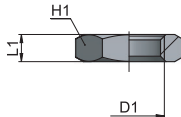


类型	D1	D2	L1	L2	L3	H1	g Δ
30 03 M5	3	M5x0,8	5	9	17	8	2,0
30 3,5 M5	3,5	M5x0,8	5	9	17	8	2,0
30 4,5 M5	4,5	M5x0,8	5	9	17	8	2,3
30 7,5 18	7,5	G1/8	6	20	30	14	9,9
30 7,5 14	7,5	G1/4	8	20	33	17	17,0
30 8,5 18	8,5	G1/8	6	20	30	14	11,5
30 8,5 14	8,5	G1/4	8	19	29,5	12	13,0
30 9,5 18	9,5	G1/8	6	20	30	14	11,9
30 9,5 14	9,5	G1/4	8	20	33	17	18,0
30 9,5 38	9,5	G3/8	9	20	34	19	21,0
30 12,5 14	12,5	G1/4	8	22	35	17	20,5
30 12,5 38	12,5	G3/8	9	22	36	19	22,9
30 12,5 12	12,5	G1/2	10	22	37,5	24	35,0
30 17,5 38	17,5	G3/8	9	24	38	19	30,2
30 17,5 12	17,5	G1/2	10	24	39	24	41,5

RA 31

螺母

Nut

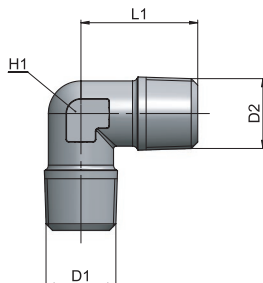


类型	D1	L1	H1	g Δ
31 00 18	G1/8	4,5	14	4,0
31 00 14	G1/4	5	17	5,0
31 00 38	G3/8	5,5	19	5,0
31 00 12	G1/2	6	24	8,0
31 00 M10x1	M10x1	4	14	3,0
31 00 M12x1	M12x1	5	16	5,0
31 00 M14x1	M14x1	5	18	5,5
31 00 M16x1	M16x1	5	20	6,0
31 00 M20x1,5	M20x1,5	4	27	10,5

RA 35

锥外螺纹弯头

Male-male elbow



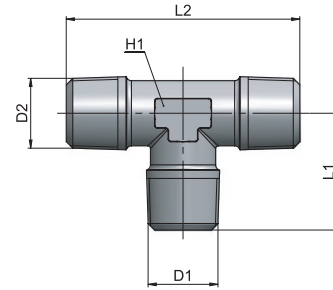
类型	D1	D2	L1	H1	g Δ
35 18 18	R1/8	R1/8	17	10	10,4
35 14 14	R1/4	R1/4	21,5	12	28,5
35 38 38	R3/8	R3/8	24,5	15	37,1
35 12 12	R1/2	R1/2	29,5	19	68,7
35 34 34	R3/4	R3/4	34,5	22	92,2
35 1 1	R1"	R1"	40,5	28	156,0

RA 36

锥外螺纹正T转接头

Male T

类型	D1	D2	L1	L2	H1	g Δ
36 18 18	R1/8	R1/8	17	34	10	14,3
36 14 14	R1/4	R1/4	21,5	43	12	28,7
36 38 38	R3/8	R3/8	24,5	49	15	50,6
36 12 12	R1/2	R1/2	29,5	59	19	93,0
36 34 34	R3/4	R3/4	34,5	69	22	138,6
36 1 1	R1"	R1"	40,5	81	28	239,3

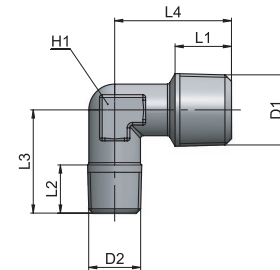


RA 38

外螺纹减径弯头

Elbow reduction male-male

类型	D1	D2	L1	L2	L3	L4	H1	g Δ
38 18 14	R1/4	R1/8	11	8	18,5	21,5	10	19,0

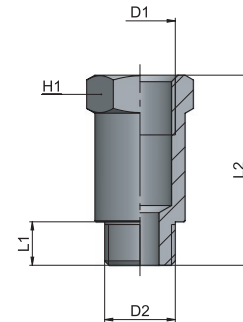


RA 39

加长型内外螺纹转接头

Extention male-female

类型	D1	D2	L1	L2	H1	g Δ
39 18 22	G1/8	G1/8	6	22	14	14,0
39 18 42	G1/8	G1/8	6	42	14	28,0
39 14 35	G1/4	G1/4	8	35	17	32,0
39 14 51	G1/4	G1/4	8	51	17	46,4

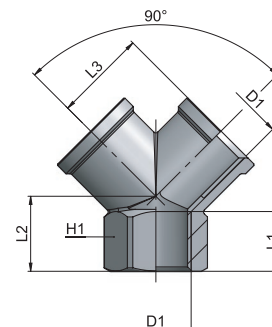


RA 40

内螺纹Y型接头

Female Y

类型	D1	L1	L2	L3	H1	g Δ
40 00 18	G1/8	8	12	14	13	18,0
40 00 14	G1/4	11	14	17	17	34,0
40 00 38	G3/8	11,5	16	19	20	45,0
40 00 12	G1/2	14	19	24,5	25	86,0

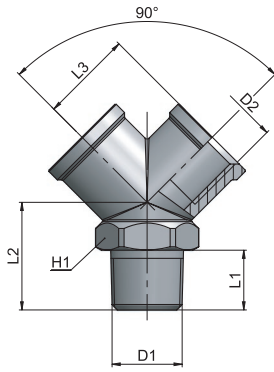


AP 55
AR 63
AV 221
CO 157
CX 255
EV 217
GU 119
GU Safety 135
GX Safety 281
HP 317
MA 27
MB 41
MC 83
MF 235
MM 333
MO 93
MP 323
MT 339
MV 171
MX 241
MY 229
OX 261
PA 113
PE 79
PM 329
PN 67
PT 347
PU 131
PU Safety 149
PUX 287
PV 203
PVX 311
PX 249
QO 363
RA 101
RF 269
RT 355
RX 275
Tools 369
Tubings 375
VF 295
VT 359
VX 299

RA 41

内外螺纹Y型接头

Male female Y

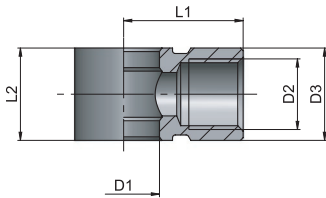


类型	D1	D2	L1	L2	L3	H1	g Δ
41 00 18	R1/8	G1/8	8	16	14	13	22,0
41 00 14	R1/4	G1/4	11	20	17	17	39,0
41 00 38	R3/8	G3/8	11,5	22	19	20	56,0
41 00 12	R1/2	G1/2	14	27	24,5	25	97,2

RA 42

单通铰接头本体

Single banjo ring



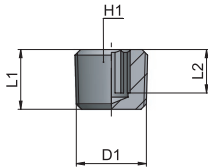
类型	D1	D2	D3	L1	L2	g Δ
42 00 M5	5,1	M5x0,8	9	11,5	10	9,0
42 00 18	10	G1/8	14	16	15	15,0
42 00 14	13,2	G1/4	17	22	17	25,9
42 00 38	17	G3/8	20,5	26	20	38,0
42 00 12	21	G1/2	25	32	24	66,0
42 00 M5 /R	7	M5x0,8	9	11,5	10	6,0

/R = 仅用于流量调节阀 - For flow controls only

RA 43

锥螺纹堵头

Taper plug

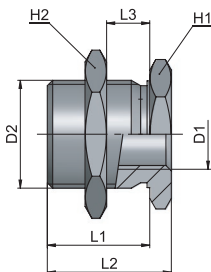


类型	D1	L1	L2	H1	g Δ
43 00 18	R1/8	7,5	4,8	5	3,0
43 00 14	R1/4	11	8	6	8,0
43 00 38	R3/8	11,5	7,6	8	14,0
43 00 12	R1/2	14	10,1	10	27,0
43 00 34	R3/4	15,5	10	14	45,5
43 00 1	R1"	17,5	11,5	17	84,0

RA 44

穿板接头

Bulkhead connector




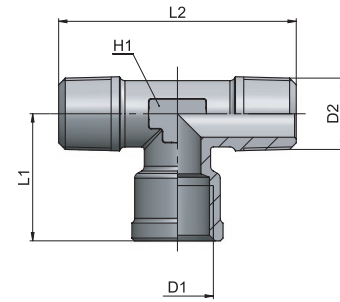
类型	D1	D2	L1	L2	L3	H1	H2	g Δ
44 00 M5	M5x0,5	M10x1	10,5	14	6	14	14	12,0
44 00 18	G1/8	M16x1,5	14	18	8	19	22	28,0
44 00 14	G1/4	M20x1,5	21	25	13	24	27	54,8
44 00 38	G3/8	M26x1,5	21	26	13	30	32	91,0
44 00 12	G1/2	M28x1,5	27	33	19	32	36	113,5

RA 45

内外螺纹正T型转接头

Male-female-male T


类型	D1	D2	L1	L2	H1	g 
45 18 18	G1/8	R1/8	18,5	34	10	16,6
45 14 14	G1/4	R1/4	22,5	43	12	31,3
45 38 38	G3/8	R3/8	25,5	49	15	54,0
45 12 12	G1/2	R1/2	30	59	19	95,4



RA 46

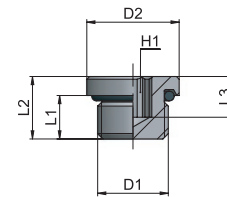
带O型圈外螺纹堵头

Male plug with oring

类型	D1	D2	L1	L2	L3	H1	g 
46 00 18	G1/8	13	6	8,5	5,5	5	4,3
46 00 14	G1/4	16	6,5	9,5	6,5	6	8,7
46 00 38	G3/8	20	7	10	6	8	14,5
46 00 12	G1/2	25	8,5	12	7	10	33,0



-20°C ÷ 80°C




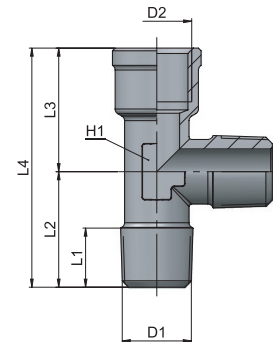
NBR 密封圈 - NBR Seals

RA 47

内外螺纹直T型转接头

Male-female-male T


类型	D1	D2	L1	L2	L3	L4	H1	g 
47 18 18	R1/8	G1/8	8,2	17	18,5	35,5	10	16,7
47 14 14	R1/4	G1/4	11	21,5	22,5	44	12	31,2
47 38 38	R3/8	G3/8	12	24,5	25,5	50	15	53,8
47 12 12	R1/2	G1/2	14	29,5	30	59,5	19	94,7



RA 94

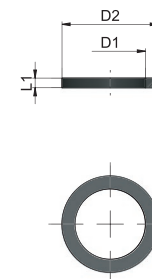
PA6塑料垫圈

PA6 sealing ring

类型	D1	D2	L1	g 
94 00 M5 -SD	5	8	1,2	0,1
94 00 18 -SD	9,9	13,9	1,8	0,2
94 00 14 -SD	13,1	17,9	1,8	0,3
94 00 38 -SD	16,8	21,4	1,8	0,3
94 00 12 -SD	21	25,4	2	0,4



-20°C ÷ 80°C

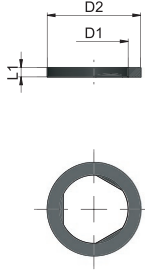


AP 55
AR 63
AV 221
CO 157
CX 255
EV 217
GU 119
GU Safety 135
GX 281
GX Safety 291
HP 317
MA 27
MB 41
MC 83
MF 235
MM 333
MO 93
MP 323
MT 339
MV 171
MX 241
MY 229
OX 261
PA 113
PE 79
PM 329
PN 67
PT 347
PU 131
PU Safety 149
PUX 287
PV 203
PVX 311
PX 249
QO 363
RA 101
RF 269
RT 355
RX 275
Tools 369
Tubings 375
VF 295
VT 359
VX 299

RA 95

PA6塑料垫圈

PA6 toothed sealing ring



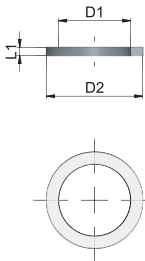
-20°C ÷ 80°C

类型	D1	D2	L1	g
95 00 M5	5	8	1,2	0,1
95 00 18	9,9	13,9	1,8	0,2
95 00 14	13,1	17,9	1,8	0,2
95 00 38	16,8	21,4	1,8	0,3
95 00 12	21	25,4	2	0,4

RA 96

铝密封垫圈

Aluminium sealing washer



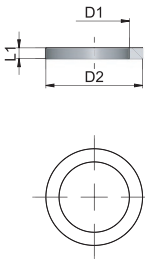
-20°C ÷ 80°C

类型	D1	D2	L1	g
96 00 M5	5	9	1	0,1
96 00 18	10,2	14	1,5	0,3
96 00 14	13,5	18	1,5	0,4
96 00 38	17	22	1,5	0,5
96 00 12	21,5	27	1,5	0,8

RA 97

PTFE密封垫圈

PTFE sealing ring



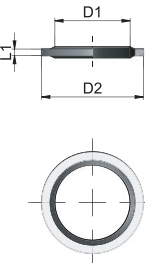
-20°C ÷ 150°C

类型	D1	D2	L1	g
97 00 18	10,1	14	2	0,3
97 00 14	13,1	18	2	0,4
97 00 38	16,8	21,4	1,8	0,6
97 00 12	21	25,5	2	0,8

RA 98

合成密封圈

Bonded seal



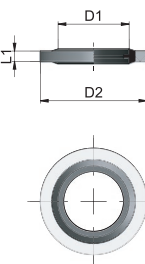
-20°C ÷ 80°C

类型	D1	D2	L1	g
98 00 18	10,4	14,7	1,2	0,6
98 00 14	13,85	18,7	1,2	0,8
98 00 38	17,35	22,7	1,2	1,1
98 00 12	21,65	26,7	1,2	1,2
98 00 34	27,3	32,6	1,2	1,5

RA 99

自对中合成密封垫圈

Bonded seal, self centring



-20°C ÷ 80°C

类型	D1	D2	L1	g
99 00 M5	5,7	9	1	0,2
99 00 18	10,37	15,88	2	1,6
99 00 14	13,74	20,57	2	2,7
99 00 38	17,28	23,80	2	3,0
99 00 12	21,54	28,58	2,5	4,6
99 00 34	27,05	34,93	2,5	6,8