

RT LINE



CN

EN

工业与商用车辆标准管接头

RT系列标准管接头(亦称“附件系列”)采用黄铜材质制造,包含直通接头、异径接头、三通接头、弯头等多种型号,专为补充MT系列产品而开发。

所有RT接头均通过TÜV认证,符合DIN 74324:1996、DIN EN ISO 9227:2017及60068-2-6:2008标准规范。

Standard Fittings for industrial and commercial vehicles

The standard fittings of the RT line, also known as “Accessory line”, are made of brass. RT line consists of nipples, reductions, Tees, L fittings just to name a few and it is developed to complement the MT line.

All RT fittings are TÜV certified according to DIN 74324: 1996, DIN EN ISO 9227: 2017 and 60068-2-6: 2008.

RT Line

1 本体
Body

镀镍黄铜 UNI EN 12164 CW614N - UNI EN 12165 CW617N
Brass UNI EN 12164 CW614N - UNI EN 12165 CW617N

2 密封圈
Seals

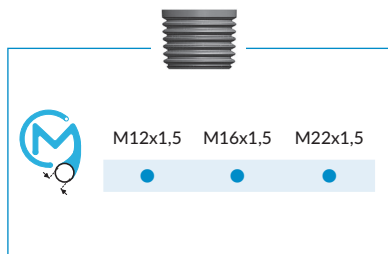
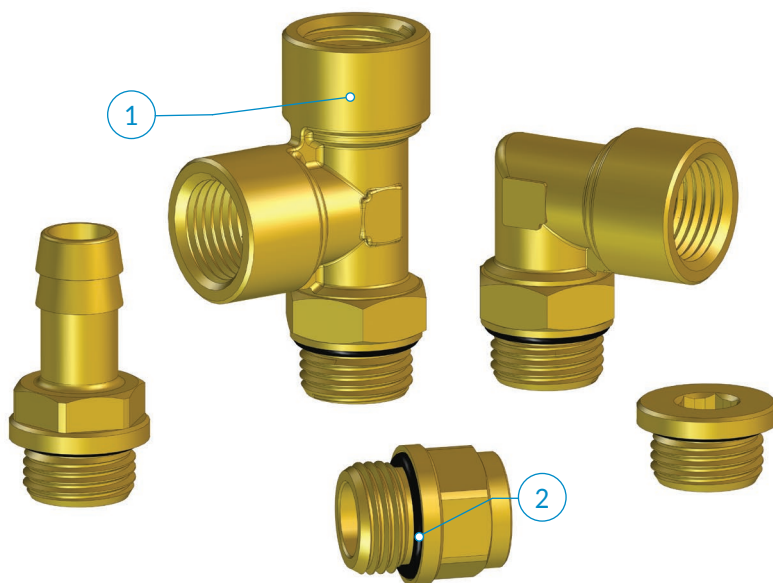
NBR
NBR



-50° ÷ 100°C



16 bar



应用领域:
商用和工业交通车辆的刹车系统。

Application fields:
Air Brake Systems on Commercial and Industrial Vehicles.

拧紧力矩
RT系列的拧紧力矩, 请参看No.342页相关数据

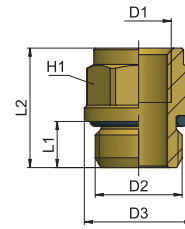
Tightening Torque Forces
As for RT *Tightening Torque Forces* please refer to the data at page 342.

RT 15

内外直螺纹减径接头

Female-Male reducing connector, parallel

类型	D1	D2	D3	L1	L2	H1	g Δ
15 M12x1,5 M16x1,5	M12x1,5	M16x1,5	20	8,5	22	17	22,7
15 M12x1,5 M22x1,5	M12x1,5	M22x1,5	25,5	8,5	17,5	17	34,4
15 M16x1,5 M22x1,5	M16x1,5	M22x1,5	25,5	8,5	17,5	21	28,7

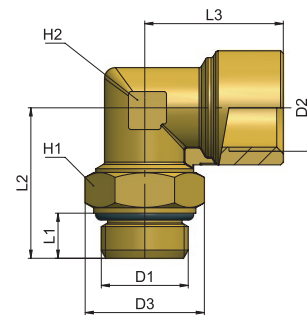


RT 22

内外螺纹直角转接头

Male-female elbow

类型	D1	D2	D3	L1	L2	L3	H1	H2	g Δ
22 M16x1,5 M16x1,5 M16x1,5	M16x1,5	22	8,3	27,7	25,5	19	15	58,5	
22 M16x1,5 M22x1,5 M22x1,5	M16x1,5	31,2	8,1	27,3	25,5	27	15	79,0	
22 M22x1,5 M22x1,5 M22x1,5	M22x1,5	31,2	8,1	30,5	30,5	27	19	111,2	

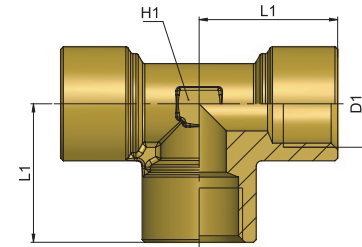


RT 23

内螺纹T型转接头

Female T

类型	D1	L1	H1	g Δ
23 M16x1,5 M16x1,5	M16x1,5	25,5	15	82,5
23 M22x1,5 M22x1,5	M22x1,5	30,5	19	143,9

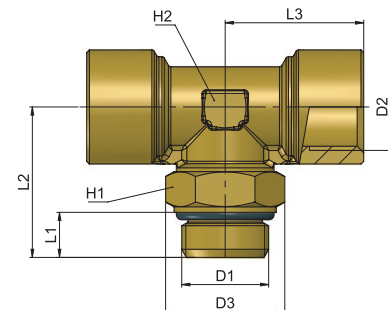


RT 24

内外螺纹正T型转接头

Male-female stud T

类型	D1	D2	D3	L1	L2	L3	H1	H2	g Δ
24 M12x1,5 M16x1,5	M12x1,5	M16x1,5	17,3	8,3	26,7	25,5	15	15	76,9
24 M16x1,5 M16x1,5	M16x1,5	M16x1,5	22	8,3	27,7	25,5	19	15	81,9
24 M16x1,5 M22x1,5	M22x1,5	M16x1,5	31,2	8,1	27,6	25,5	27	15	102,6
24 M22x1,5 M22x1,5	M22x1,5	M22x1,5	31,2	8,1	30,5	30,5	27	19	150,1

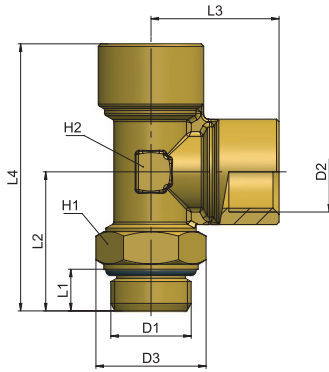


AP	55
AR	63
AV	221
CO	157
CX	255
EV	217
GU	119
GU Safety	135
GX	281
GX Safety	291
HP	317
MA	27
MB	41
MC	83
MF	235
MM	333
MO	93
MP	323
MT	339
MV	171
MX	241
MY	229
OX	261
PA	113
PE	79
PM	329
PN	67
PT	347
PU	131
PU Safety	149
PUX	287
PV	203
PVX	311
PX	249
QO	363
RA	101
RF	269
RT	355
RX	275
Tools	369
Tubings	375
VF	295
VT	359
VX	299

RT 25

内外螺纹直T型转接头

Male-Female, lateral T

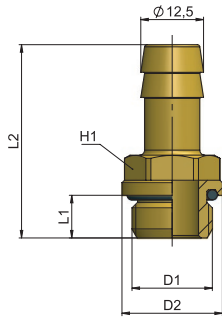


类型	D1	D2	D3	L1	L2	L3	L4	H1	H2	g Δ
25 M12x1,5 M16x1,5	M12x1,5	M16x1,5	17,3	8,3	26,7	25,5	52,2	15	15	76,2
25 M16x1,5 M16x1,5	M16x1,5	M16x1,5	22	8,3	27,3	25,5	52,8	19	15	82,2
25 M16x1,5 M22x1,5	M22x1,5	M16x1,5	31,2	8,1	27,6	25,5	53,1	27	15	104,2
25 M22x1,5 M22x1,5	M22x1,5	M22x1,5	31,2	8,1	30,5	30,5	61	27	19	150,7

RT 30

宝塔接头

Hose connector

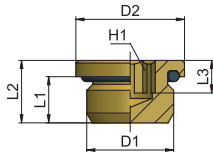


类型	D1	D2	L1	L2	H1	g Δ
30 12,5 M16x1,5	M16x1,5	20	8,5	38,5	17	25,2
30 12,5 M22x1,5	M22x1,5	25,5	8,5	38,5	17	37,1

RT 46

带o型圈外螺纹堵头

Male plug with oring



类型	D1	D2	L1	L2	L3	H1	g Δ
46 00 M12x1,5	M12x1,5	15	8,5	11,5	6	6	8,4
46 00 M16x1,5	M16x1,5	20	8,5	11,5	6	8	15,4
46 00 M22x1,5	M22x1,5	25,5	8,5	11,5	7	12	26,5