



ABOVE COSTCO WAREHOUSE UNDER CONSTRUCTION AT CANBERRA AIRPORT.

COSTCO OPENING SOON

GLOBAL RETAIL GIANT COSTCO IS SET TO OPEN AT MAJURA PARK, BRINGING ITS UNIQUE PAID MEMBERSHIP WAREHOUSE SHOPPING FORMULA TO CANBERRA.

In a coup for Majura Park, and indeed Canberra, Costco is scheduled to open in July 2011, and will be located in a brand new, custom built building at Majura Park.

This will be the third Australian warehouse for Costco, who currently boast 582 warehouses worldwide, and over 58 million cardholders.

The new style of shopping will be the first of its kind in Canberra. Costco are able to offer lower prices and better value by eliminating virtually all overheads historically associated with conventional wholesalers and

retailers. This enables them to pass on dramatic savings to their members, allowing small-to-medium sized businesses to reduce costs, whilst allowing individuals to purchase for their personal needs.

Product categories found at Costco include food, confectionary, appliances, television and media, automotive supplies, tyres, hardware, sporting goods, jewellery, watches, cameras, books, homewares, apparel, health and beauty aids, tobacco, furniture, office supplies and office equipment.

The warehouse is also set to make significant economic contributions to the region by increasing competition, lowering prices between the major national players, whilst also driving employment growth.

Business Development Manager, Tori Murray, noted, "Majura Park's newest tenants - McDonalds, 3seeds and a Woolworths Petrol station - are all open for business and trading extremely well. Together with the Recreation Centre that is currently under construction and Costco opening in July, Majura Park is further strengthened as a real destination for shoppers."

For more information, visit www.costco.com.au

→
INSIDE
THIS ISSUE



2



3

PAGE 2
MAJURA PARK IN THE SWIM
.....
PAGE 3
NEW CANBERRA QANTASLINK
FACILITY
.....



THIS OPPORTUNITY WILL DELIVER
THE BEST VENUE WE USE
ANYWHERE IN AUSTRALIA.



ABOVE RICHARD SNOW, COMMERCAIL & RETAIL LEASING, CANBERRA AIRPORT &
PHIL KING, OWNER, KINGSWIM

MAJURA PARK IN THE SWIM

FURTHER ENHANCING THE SERVICE OFFERING
AT MAJURA PARK WILL BE THE MAJURA PARK
RECREATION CENTRE, INCORPORATING KINGSWIM
– A LEARN-TO-SWIM FACILITY OWNED AND
OPERATED BY OLYMPIC COACH PHIL KING.

Phil is excited about opening his next swim school in Canberra’s Majura
Park precinct.

“It’s not often you get to design a facility exactly the way you want it. This
opportunity will deliver the best venue we use anywhere in Australia,” Mr
King said.

Already operating ten Kingswim facilities around the country, King’s
formula is a business and community success story. Based around the
principles of Quality Teaching, Water and Service, Kings has its own well-
researched method of fast tracking children to become “Safer-Faster”. At
Kings, their formula for success = Happy Child + Happy Parent.

The Majura Park Recreation Centre will feature a four lane, 25 metre
lap swimming pool and a dedicated 10 metre learn-to-swim pool which
will also facilitate activities such as aqua-cise and aqua-aerobics. The
Recreation Centre also has is own state of the art gymnasium, operating as
Eccentric Health and Fitness (more information inset), and has provision for
a Café overlooking the pool deck.

Operating hours currently anticipated for the pool are 7am – 7pm weekdays
and 7am – 2pm on weekends. This will be of most benefit for tenants of the

adjacent Majura Office Park who can chose to swim laps or work out before
or after work or even during their lunch hour. Equally, members of the
general public are most welcome to try out the new facilities or enrol their
child in a Kingswim learn-to-swim class.

Also under construction and adjacent to the Aquatic Centre is a multi-
purpose sports oval which will be ready for use in early spring. Offering
permanent soccer nets, barbeque facilities, and shaded seating areas for
tenant use, it underpins our strategy of “building your work-life balance” at
Majura Park.

ECCENTRIC HEALTH & FITNESS

Currently operating in Brindabella Business Park, Eccentric Health &
Fitness are very excited about expanding to become part of the health and
wellness package on offer at Majura Park Recreation Centre.

Eccentric Health & Fitness, under the leadership of Director Latoya
Maddigan, will operate a 160m² gymnasium adjacent to the pool in the
Recreation Centre. Eccentric will specialise in group classes; specifically,
the world renowned Les Mills Group Fitness Classes.

Eccentric Health & Fitness believe in providing a friendly, non-intimidating
environment that allows their clients to exceed their fitness and wellness
goals with guidance from Eccentric’s personal trainers, small group fitness
programs, boot-camps and corporate packages.

Members of Eccentric Health & Fitness will enjoy reciprocal rights to both
venues, allowing them to join in group fitness classes at Majura Park,
or utilise the gym facilities and personal training on offer at Brindabella
Business Park.

Opening hours for Eccentric Health & Fitness at Majura Park Recreation
Park are currently anticipated to be 7am to 6pm weekdays.

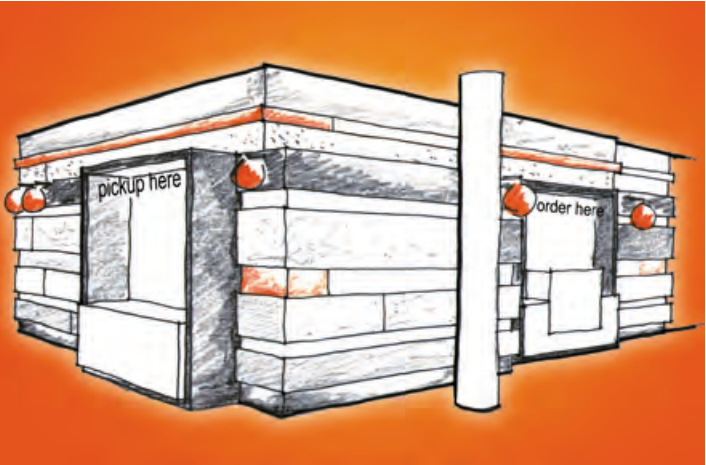
TUK CHOP OPENING SOON

THE FOOD OFFERING AT CANBERRA AIRPORT’S
TERMINAL WILL SOON BE BOOSTED BY THE
OPENING OF “TUK CHOP”.

Located next to Hudson’s Coffee, Tuk Chop, as its name indicates, draws on
inspiration from Asia for both its menu and fit-out.

Tuk Chop will offer a diverse range of flavours and menu items, with a focus
on keeping the food as natural as possible. Traditional Asian dishes such
as dumplings, rice paper rolls, salads and soups, stir-fries and curries will
be available, as well as more adventurous items like the Asian-inspired
breakfast dishes of toasted coconut bread and free-range egg omelettes.

Currently under construction, Tuk Chop will be open for trade in late July.



ABOVE AN ARTISTS IMPRESSION OF THE TUK CHOP, OPENING SOON AT
CANBERRA AIRPORT.



QANTAS Q400 TAKES OFF INFRONT OF THE CANBERRA AIRPORT MAINTENANCE FACILITY

NEW CANBERRA FACILITY

CANBERRA AIRPORT
WELCOMES THE
ADDITION OF
QANTASLINK
MAINTENANCE
SERVICES.

The team at Qantaslink
Maintenance perform line
maintenance on all aircraft flying
in and out of Canberra Airport,
focusing predominantly on the
Qantaslink Dash 8 aircraft and in
particular, the Q400.

Whilst Qantaslink’s major
national Dash 8 facility is in
Tamworth, Canberra Airport has
recently become a major line
maintenance service facility with its
technologically advanced hangar.

Head of Aviation at Canberra
Airport, Matthew Brown,
highlighted the significance of
the shift by Qantas stating “by
moving its Qantaslink Maintenance
Services to Canberra, Qantas
has demonstrated a long term
commitment to Canberra Airport
remaining a key operational port for
its fleet of Dash 8 aircraft”.



ABOVE THE CHILDREN'S PLANE METALWORKS, LOCATED IN THE ENTRY ON THE DEPARTURES LEVEL AT CANBERRA AIRPORT.

ABOVE BRIAN BROWN, CHAIRMAN JERRABOMBERRA COMMUNITY BANK PROJECT; JAYSON HINDER, CHAIRMAN MOLONGLO FINANCIAL SERVICES & ANDREW LEECE, MANAGER REGULATORY AFFAIRS, CANBERRA AIRPORT.

A CHILD'S PERSPECTIVE

ARTWORK FROM CHILDREN AT THE PARK SCHOOL FOR EARLY LEARNING IS NOW ON EXHIBITION INSIDE THE MAIN ENTRY TO STAGE ONE OF CANBERRA AIRPORT'S NEW TERMINAL.

Commissioned to celebrate the opening of the Southern Concourse Terminal Extension, the innovative metalworks are delightful representations of each child's interpretation of a plane.

The Park School for Early Learning, located in Brindabella Business Park, caters for children aged between three months and five years of age.

Designed and built to provide a high quality, proximate, accessible childcare option for tenants of Brindabella Business Park, The Park School offers broad-ranging teaching programs. As a demonstration of the value and importance placed on the arts, the students work daily with Mikki Trail, the Park School's own in-house artist, in a purpose-built art studio.

Manager of Terminal Business at Canberra Airport, Ferdi Lumbaca, praised the feature, noting that "it really softens the image of our new terminal and makes it feel like part of the wider community. It also offers a very different perception of the aviation world as seen through the eyes of a child. We find all children love airports and planes".

Director of the Park School for Early Learning, Michelle Noble, said "the children were delighted to have an opportunity to contribute in their own unique way to the opening of Stage One of the new terminal, and enjoyed the process of creating their own planes immensely. The Park School enjoys the synergies that come about as a result of being located on airport, and is thrilled with the opportunity to show off the children's artwork to the travelling public".

BENDIGO BANK CAMPAIGN FOR JERRABOMBERRA

CANBERRA AIRPORT IS PLEASED TO ANNOUNCE ITS SUPPORT FOR A COMMUNITY BANK PROJECT BEING SET UP BY THE BENDIGO BANK IN THE JERRABOMBERRA COMMUNITY.

Community bank branches provide communities with more than just banking services - they deliver employment opportunities, retain local capital in the community and provide a local investment option for shareholders.

The advantage of banking with a community bank is that they are locally owned and operated, meaning all lending decisions are made locally by people who understand the unique challenges and financial needs of the business people and residents who live and work in the community that the bank serves.

Furthermore, these banks secure the local community with key revenue streams for the financing of other community projects. This level of support to the local community is Bendigo Bank's point of difference.

Canberra Airport Managing Director, Stephen Byron praised the project, noting that "Bendigo Bank is investing in regional communities by initiating these Community Bank projects. It is crucial that these projects receive the initial financial contributions which provide an economic foundation for the bank to operate."



**CONTACTS
& DETAILS**

CANBERRA AIRPORT PTY LTD | ACN 080 361 548
LEVEL 1, 2 BRINDABELLA CIRCUIT,
BRINDABELLA BUSINESS PARK ACT 2609
TELEPHONE 02 6275 2222 | FACSIMILE 02 6275 2244
EMAIL INFO@CANBERRAAIRPORT.COM.AU

CONTENT & LAYOUT
MELISSA EVANS & THOMAS WOODS
PHOTOS: GINETTE SNOW