

THE HUB

Airport to grow jobs

The recently released Canberra Spatial Plan identifies Canberra International Airport as a vital regional asset that can grow and sustain employment growth.

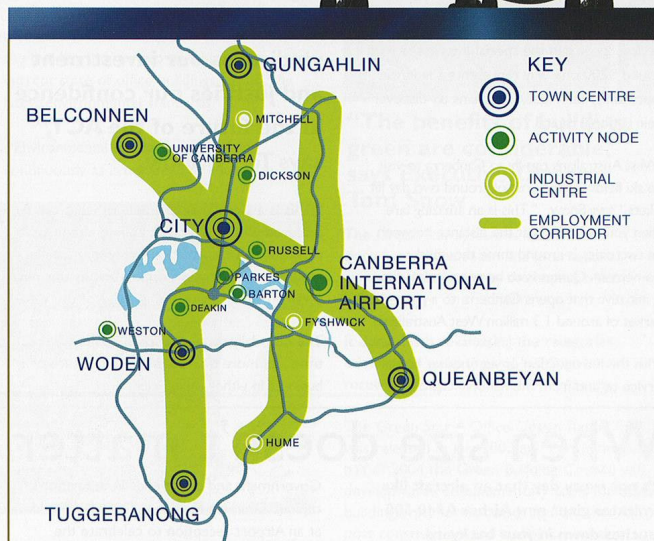
In its far-reaching recommendations for the future growth and direction of the ACT, the Plan acknowledges the Airport's 'critical infrastructure role' in the Canberra region.

"Planning to ensure that the Airport continues to play a major role in this region as a regional Hub, bringing new jobs to the region, is of fundamental importance," the Plan says. It also observes that the scale and development at the Airport provides "employment opportunities not available elsewhere in the ACT."

"We support this approach wholeheartedly," says Airport Managing Director, Stephen Byron. "In our Year 2020 Master Plan we promised, among things, to optimize the social and economic benefits of the Airport to the region. We are delivering on that promise through our ongoing upgrade of the Airport and its aviation infrastructure and the development of a Business Park that's providing new opportunities to grow sustainable jobs," he says.

The Canberra Spatial Plan favors the creation of three major employment corridors – an east-west, a primary north-south and a second north-south – each designed to maximize the use of existing transport systems and minimize the time taken to travel to work.

"The Airport is ideally located for employment growth because it sits at the cross-roads of two of the three corridors and is justifiably recognized as a key location for office employment," Byron says. The Plan says it supports the development of the Airport as a generator of economic activity for Canberra and the region and promotes it as a major



'activity node' that can ultimately accommodate up to 10 percent of total ACT employment.

Byron hails the Spatial Plan's unequivocal stance that residential estates under its flight path should not limit Airport operations.

"We applaud the ACT Government's decision to enter into detailed discussions with the NSW Government and local governments to ensure that residential developments are not built in areas that are significantly affected by aircraft noise."

Byron also praises the Plan's emphasis on raising the minimum sustainability performance of new buildings in the ACT. It recommends investigating the introduction of Green Star

Office design – a new approach to the design of environmentally sustainable office buildings. "We are totally committed to building green and we are working with the Green Building Council to build Australia's first five star development in the Brindabella Business Park.

This is a new plan for a new century," Byron says, "It removes the ACT's artificial and outdated planning limitations, encourages the release of more land, particularly in Civic, establishes new benchmarks for urban design and promotes greater employment growth.

This is a plan that gives us great encouragement as we work to develop a vibrant and lively gateway to the nation's capital city."



Inside:

- Emirates Airbus, next stop Canberra
- Building Green, by design



Direct service to Perth

A decision by Qantas to launch a non-stop service from Canberra to Perth creates exciting new opportunities to develop and grow business and tourism links in both the ACT and Western Australia, says Terry Snow, the Executive Chairman of Canberra International Airport.

Addressing a joint launch to celebrate the new service, Snow said the special Internet fare of around \$200 one-way represents a fantastic opportunity for West Australians to 'discover' their national capital.

"West Australians can fly to Canberra to visit the ski fields for the cost of around two day lift tickets," says Snow. "This is an amazing fare when you consider that the distance between the two cities is around three thousand kilometres. Qantas is to be congratulated for an initiative that opens Canberra to a potential market of around 1.3 million West Australians."

With the introduction of yet another direct service to and from the national capital,

Canberra now has direct non-stop links to five of Australia's capitals. Since purchasing the Airport in May 1998, Capital Airport Group has invested more than \$180 million upgrading terminal facilities and building the impressive Brindabella Business Park.

"Qantas's decision to go direct to Perth both vindicates our investment and justifies our confidence in the future of the ACT," says Terry Snow.

"This is a wonderful example of what can be achieved when an airport and an airline work together and I encourage everyone to take advantage of the great opportunities this new service provides every single day of the week."

The new daily service is scheduled to give travellers more time to undertake leisure or business in either capital city.



Federal Territories Minister, Senator Ian Campbell, officially launched the new service describing it as "a welcome and historic linking" of the national capital and the people of Western Australia.

"All Australians should visit our beautiful national capital at least once in their lifetime," he says.

When size doesn't matter

It's not every day that an aircraft like Emirates giant new Airbus A340-500 touches down in your backyard.

But, thanks to upgraded infrastructure, the Airport was able to handle the arrival and departure of this remarkable aircraft with ease and style.



Stephen Byron welcomes Emirates

The Dubai based international airline selected Canberra as the preferred venue to launch the inaugural flight of its new long-range aircraft "We chose Canberra in order to introduce this extraordinary new aircraft to the Federal

Government and our friends in the nation's capital," Emirates President, Tim Clarke said at an Airport reception to celebrate the Airbus's launch.

More than 100 guests from Government, business, tourism and the media attended the launch and were treated to a demonstration flight from the nation's capital along the coastline and back. The Managing Director of Canberra International Airport, Stephen Byron, said the arrival of the new Emirates Airbus A340/500 was a clear indication of the airlines commitment to Australia.

"We are delighted to see the arrival of the new range of Emirates A340/500 aircraft and we congratulate them for their commitment to buy the latest in modern long haul aircraft."



While Emirates has no immediate plans to introduce a regular scheduled service to Canberra, the airline says it is interested in the Airport's plans to upgrade facilities for international operations. Emirates is currently able to use Canberra as an alternative to Sydney Airport.

The Emirates Airbus A340/500 can fly non-stop for 17 hours - that's around 16,000 kilometres - and carry 258 passengers and 14 tonnes of cargo. It features the most exclusive first class seat in the world with fully enclosed suites and sliding doors for privacy. Business class seats have the biggest TV screens in the air and in-built massage controls. All classes have an in-flight entertainment system offering 100 movies, 50 TV channels and 350 music channels.

Building Green, by design

Canberra International Airport played host in January to the first of a series of 13 nationwide environmental seminars conducted by the Green Building Council of Australia.

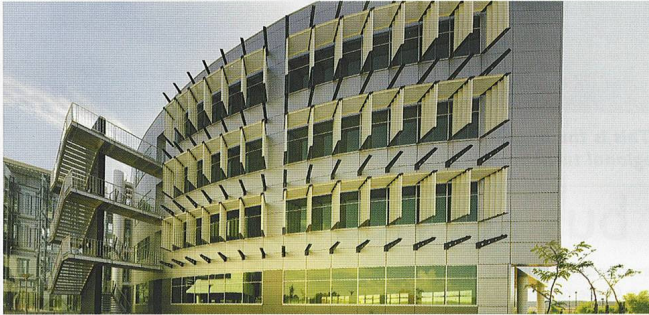
Attracting 42 local architects, designers, developers and engineers, the daylong course was designed to skill them in the latest environmentally sustainable best practices for green building design.

The Green Building Council of Australia is committed to developing a range of national environmental standards that rate the design, construction and operation of buildings against a variety of environmental criteria, including water and energy efficiency, indoor environment and material selection.

The benefits of building green are considerable," he says. "They include more productive and healthier working environments, lower insurance costs, lower development control costs, higher returns and an enhanced industry image. Environmentally sustainable buildings also have less impact on the natural environment."

The course also provided participants with the necessary skills to achieve a "Green Star" environmental rating. This is an environmental rating tool that enables the building industry to benchmark the current state of office buildings against the latest environmental standards.

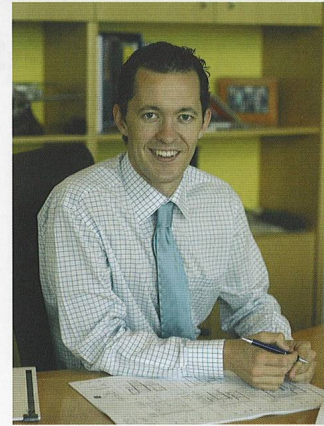
"Environmental standards are evolving continuously as is our need to keep pace



The Executive Director of Canberra International Airport, Tom Snow, says the courses help ensure that buildings within the Airport precinct, including the Brindabella Business Park keep pace with environmental best practice."

educationally with best practice. Clearly, designers, architects and developers need to design buildings that can accommodate future environmental needs. This is why the Green Star rating tools are so important," Snow says.

"Sustainable development is development that meets the needs of the present without compromising the ability of future generations to meet their own needs,"
Green Building Council
Australia.



"The benefits of building green are considerable," says Executive Director Tom Snow

The Green Star system is based on documented Australian and international research that examines the impact office buildings have on the environment.

It does this by evaluating the categories, criteria and weightings of buildings before receiving public feedback from industry.

The Green Star – Office Design Rating Tool was released in July 2003 and during the first half of 2004 the Green Building Council will develop three complementary tools for office buildings: one for fit-out design; another for post construction; and a tool for existing office base building performance

Information about the courses can be found at the Green Building Council Australia's web site: www.gbcaus.org



www.canberraairport.com.au

Qantas dashes to Canberra

A decision by Qantas to purchase six new Turboprop Dash 8 aircraft is further evidence of Canberra International Airport's increasing role as a transport Hub for south - eastern Australia, Airport Managing Director, Stephen Byron says.

The new 50 seat Dash 8 Q300 aircraft will replace the older 36 seat Dash 8 aircraft currently operated by QantasLink on its regional routes including Canberra.

"The new aircraft will enable Canberrans to travel to Sydney and regional Australia more promptly and more efficiently," Byron says.

The Executive General Manager of Qantas Regional Airlines, Narendra Kumar, says the Dash 8 purchase is the biggest ever single investment Qantas has made in its regional turboprop fleet. "We are committed to continuing our investment in QantasLink to ensure we have the best fleet of regional aircraft in Australia," he said.

Due for delivery in the first half of next year, the new aircraft will make more seats available at peak times on key routes such as Canberra to Sydney and Canberra to Melbourne.

The Dash 8 aircraft is a key element to QantasLink's regional fleet providing passengers with more seats and greater travelling convenience, quieter cabins and an additional flight attendant.



"This is the biggest ever single investment Qantas has made in its regional turboprop fleet."

New shuttle bus service

The Airliner shuttle, the bus that links Canberra International Airport to the city, has a new route and timetable.

Under the new timetable, the Airliner bus will increase its number of daily services from nine to 15.

Operations Manager, Terry Weston, says the new arrangements are a direct result of the increasing growth of the Brindabella Business Park. Under the

new timetable, the first shuttle will leave Canberra City at 5.30am stopping at the City Backpackers, the Crowne Plaza Hotel and the Campbell Offices before arriving at the Airport by 5.45am. Departing the Airport the service stops at the Brindabella Business Park, Rydges Lakeside, and the Novatel on Northbourne before arriving in the city. The last service leaves the Brindabella Business Park for the city at 6.25pm.



All aboard the Airport Bus

Airport digs deep for baby appeal

The Executive Chairman of Canberra International Airport, Terry Snow, has **donated \$15,000** toward the purchase of a neonatal humidicrib transporter for The Canberra Hospital.

The \$180,000 transporter assists to stabilise and transport critically ill babies, helping them to stay alive on their way to hospital.

"The transporter gives babies living in our region a fighting chance for life and we are delighted to be able to kick start such an important public appeal," Snow says.

So far the appeal has raised more than \$30,000 in donations from members of the public and ACT businesses.



Pty Ltd. ACN 080 361 548
2 Brindabella Circuit
Brindabella Business Park
ACT 2609
Ph: 02 6275 2222
Fax: 02 6275 2244

Editor: Ken Begg
Reporter: Sam Begg
Design: Ideas and Directions