



AT THE WEHI ANNOUNCEMENT, TERRY, GINETTE, AND TOM SNOW WERE PRESENT. MAGDA SZUBANSKI ALSO JOINED THE FOUNDATION TO SHARE HER EXPERIENCE LIVING WITH AUTO-IMMUNE DISEASE

## SNOW MEDICAL ANNOUNCES FUNDING FOR IMMUNE HEALTH

### TO ESTABLISH THE SNOW CENTRE FOR IMMUNE HEALTH

The Snow Medical Research Foundation (Snow Medical) is partnering with the Walter and Eliza Hall Institute (WEHI) to establish a centre for immune health, the Snow Centre for Immune Health, by investing \$100 million over 10 years. This initial commitment is one of the longest running philanthropic investments in Australian history.

Research at the Snow Centre for Immune Health will address the increasing presence of immune disease in modern society. A team of leading Australian and international scientists will deliver a long-term research program which will decipher what factors

give us good or poor immune health, transforming and accelerating personalised diagnosis and treatment for people suffering from immune diseases and dysfunction.

This substantial, long-term funding will allow researchers to pursue a bold, far-sighted program beyond the short-term funding largely available in Australia. This partnership is people-focused and will support some of Australia's best scientists and their teams to pursue their visionary and high risk, high reward work that is expected to fundamentally change how immunological diseases are treated.

"We empower bold, transformative research across Australia by backing the best and brightest researchers – and resourcing them with the tools they need to be world-class," Snow Medical Chair Tom Snow said.

The \$100 million commitment more than doubles Snow Medical Research Foundation's investment in medical research from \$100 million over the four years since 2019.

The Snow Centre for Immune Health will be co-led by WEHI and the Royal Melbourne Hospital and will open in early 2024, with more than 50 scientists, clinicians and staff expected to be employed within the first five years.





THE DEVELOPMENT SITE IS PLANNED FOR THE CORNER OF LONDON CIRCUIT AND NORTHBOURNE AVENUE

## GROWING OUR CITY

### NEW MIXED-USE PRECINCT PLANNED FOR LONDON CIRCUIT

Capital Property Group has successfully acquired a prime land parcel in Canberra's City Centre, on the corner of London Circuit and Northbourne Avenue, through a competitive tender process with the ACT Government via the City Renewal Authority.

Richard Snow, Head of Property, said Capital Property Group is excited to have purchased such a prominent site in the City Centre, and that the purchase is "testament to our dedication to the growth and prosperity of our city."

"This opportunity harnesses our long-standing experience, with award-winning precinct design skills and a commitment to sustainability and excellence honed at Canberra Airport, Denman Prospect and Constitution Place over the past 25 years.

"Not only do we strongly believe the City Centre is the heart of Canberra and the ideal location for collaboration, client meetings, business and community spaces, but this will also support new job opportunities. We look forward to playing a vital role in supporting these activities," Richard Snow said.

The site will be transformed into a vibrant mixed-use precinct which will feature up to four distinct buildings, with a strong focus on food and beverage.

Construction is set to commence by the end of 2024, with completion scheduled for 2027.

## UPDATES FROM ACROSS OUR BUSINESS

### MAJURA PARK

Australia's number one destination for kitchenware has arrived at Majura Park. Kitchen Warehouse, offering a great range of all things relating to the home, cooking, and entertaining is now open at 10 Catalina Drive, Majura Park.

Majura Bar & Grill is now open, with a pub style offering and an extensive wine list and selection of tap beers.

Harris Farm Markets have commenced their fit out and are due to open at 10 Catalina Drive, alongside Kitchen Warehouse, in mid-2024.



### BRINDABELLA BUSINESS PARK

Crowd favourite Hokka Hokka, offering a variety of popular Asian dishes, is returning to Brindabella Business Park early next year, with a fresh new look and location at 6 Brindabella, next to EQ Bakehouse.

In tenant news, EWS Asia Pacific and SAIC have joined 2 Brindabella Circuit, with SAAB and SPA moving into our newest Brindabella Park building, 6 Brindabella Circuit.





ARTIST RENDER OF THE NEW OFFICE DEVELOPMENT AT CONSTITUTION PLACE

## NEW BUILDING IN THE CONSTITUTION PLACE PRECINCT

### NEW OFFICE DEVELOPMENT TO START IN APRIL 2024

Capital Property Group is pleased to announce the successful acquisition of a land parcel adjoining Constitution Place, through a competitive tender process with the ACT Government via the City Renewal Authority.

This strategic purchase paves the way for the construction of a new six-level, 14,000 sqm commercial tower. This exciting project will carry forward the same architectural excellence by Bates Smart and construction expertise by Construction Control that defines the existing Constitution Place precinct.

Richard Snow, Head of Property, said the Capital Property Group is excited to be able to bring this revolutionary project a step closer for Canberra.

“Building on the success of Constitution Place, we are committed to setting a new standard of excellence for office development and further revitalising Canberra’s City Centre. This new development will provide high-quality, centrally located office accommodation to meet the city’s growing needs and will place a strong emphasis on sustainability, targeting a WELL Gold-rated Shell and Core, and aiming for a 5-star NABERS energy rating.” Mr Snow said.

“We are passionate about Canberra and continuing to make it Australia’s most vibrant, livable city. Our experience in award-winning precinct design, positions us well to harness the full potential of the opportunity at 1A Constitution Avenue.”

Construction is set to commence in April 2024, with completion scheduled for mid-2026.



### CANBERRA AIRPORT

An exciting new store opening, Amuse Beauty Studio, is joining the retail mix in the Airport Terminal in December. The store, by existing retail partner AWPL Lagardere, will stock fragrance and beauty brands including as Tom Ford, Jo Malone and Glasshouse Fragrances.

CBR Duty Free is now open every Tuesday, Friday and Sunday, in line with Fiji Airways flights. Offering a great range of travel essentials as well as alcohol, fragrances, technology and books.



### CONSTITUTION PLACE

Congratulations to Such & Such at 220 London Circuit, who secured the title of NSW/ACT New Restaurant of the Year at the 2023 Good Food Awards, in addition to taking home a hat. Japanese restaurant Mu Omakase was also recognised at the awards with a hat.

One Constitution Avenue will soon welcome new tenants. NAB will be located on level 10, and Norton Rose Fulbright on level 6 of the building.



## 2023 SNOW ENTREPRENEURS ANNOUNCED

### AS A PART OF THE FELLOWSHIPS FOR SOCIAL CHANGE PROGRAM

The second cohort of The Snow Foundation 'Snow Entrepreneurs' have been announced as a part of the fellowships for social change program. With nine visionary, social impact start-up leaders selected, recipients will share in grants totalling \$1.5 million and enjoy extensive capacity-building support.

In addition to \$100-200k each in philanthropic funding, the Snow Entrepreneurs receive comprehensive wrap-around support, including a three-day leadership program, mentoring and tailored advisory services through Social Impact Hub, a 12-week Antler Founders program, and invaluable peer cohort engagement and connections.

In this year's cohort, initiatives address a diverse range of critical issues, including disability, employment pathways, domestic violence/homelessness, education, and mental health. Almost all fellows bring lived experience to their initiatives, showcasing a personal connection to the issues they aim to tackle.



JOEL ANDERSON  
FOREMIND



JASON DAVIS  
HOLD ACCESS



NICOLE DYSON  
FUTURE ANYTHING



RENUKA FERNANDO  
RELOVE



MELANIE GREBLO  
SCRIBED



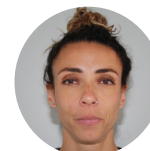
MARYANNE HARRIS  
ROBOFIT



REECE MILLER  
SPENDABLE



TONY ROTHACKER  
YOUNGSTER.CO



GEORGIA WEIR  
DEADLY RUNNERS

2023 SNOW ENTREPRENEURS

## SUPPORTING RENEWABLE ENERGY

### CANBERRA AIRPORT ANNOUNCES INVESTMENT INTO AUSTRALIAN RENEWABLE ENERGY COMPANY, VAST

Canberra Airport has committed up to US\$10m to Vast, an Australian renewable energy company focusing on developing the next generation of concentrated solar power. Funding will go to the construction of a major concentrated solar power plant, to be co-located with a solar green methanol demonstration plant in Port Augusta, South Australia.

The low-cost carbon free power and heat delivered by this technology can be dispatched to the grid, or used as a thermal battery, stored for later dispatch. This increased duration of storage (up to 16 hours), in comparison to current battery storage, will support large-scale transition to renewables such as solar and wind.



WORLD-FIRST GREEN METHANOL DEMONSTRATION PLANT IN PORT AUGUSTA

Craig Wood, CEO of Vast, said "Canberra Airport's extensive experience and long history in the aviation industry will be tremendously valuable as we start to produce Sustainable Aviation Fuel in the coming years. This is a significant investment which will help us bring our Australia-made technology to the world."

The investment is another in Canberra Airport's long-standing and deep commitment to implementing sustainability measures throughout its business and aligns with a strong commitment to carbon transition and the pathway to net zero.



### CONTACT DETAILS



#### Canberra Airport Pty Ltd

ACN 080 361 548

Level 4, Plaza Offices – West

21 Terminal Avenue, Canberra Airport

E: [info@canberraairport.com.au](mailto:info@canberraairport.com.au)

T: 02 6275 2222