
BuzziBracks

Curtain Collection



www.buzzi.space



CURTAINS

4 Curtain A
4 **kvadrat** Frost

5 - 6 Curtain B
5 **kvadrat** Daybreak 2
6 Velvet

7 - 8 Curtain C
7 **kvadrat** Dawn 2
8 **kvadrat** Zulu 2

9 - 10 Curtain D
9 **kvadrat** Drops
10 **kvadrat** Mi Casa

12 - 13 Curtain F
12 **kvadrat** Bonus
13 **kvadrat** Drops Acoustic

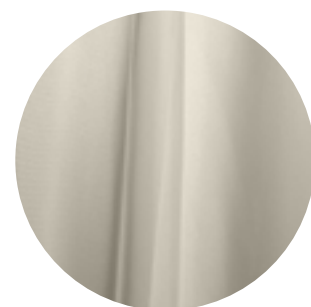
14 - 15 Contact

CUR A

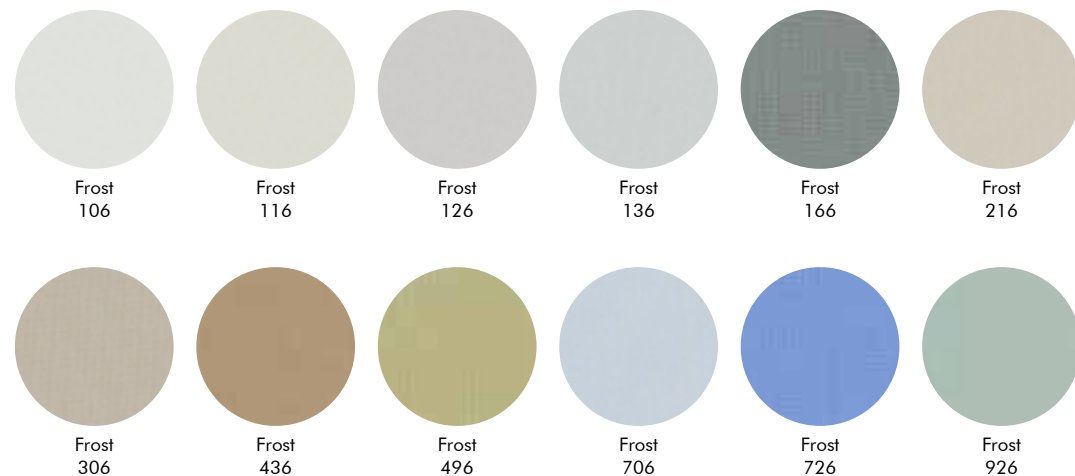
FROST

Frost

kvadrat



Characteristics Transparent
Composition 50% polyester FR, 50% polyester
Weight App. 150 g/lin.m
Flammability EN 13 773 class 1 | BS 5867 part 2 type B | DIN 4102 B1 | SN 198 898 5.2 | NF D 92 507 M1 | UNI 9177 classe 1 | NFPA 701 | AS/NZS 1530.3 | IMO A.471 (XII)
Fastness to light Note 5-7, ISO 105-B02
Maintenance Washable at max. 60°C. Drip drying
 Ironing will be necessary

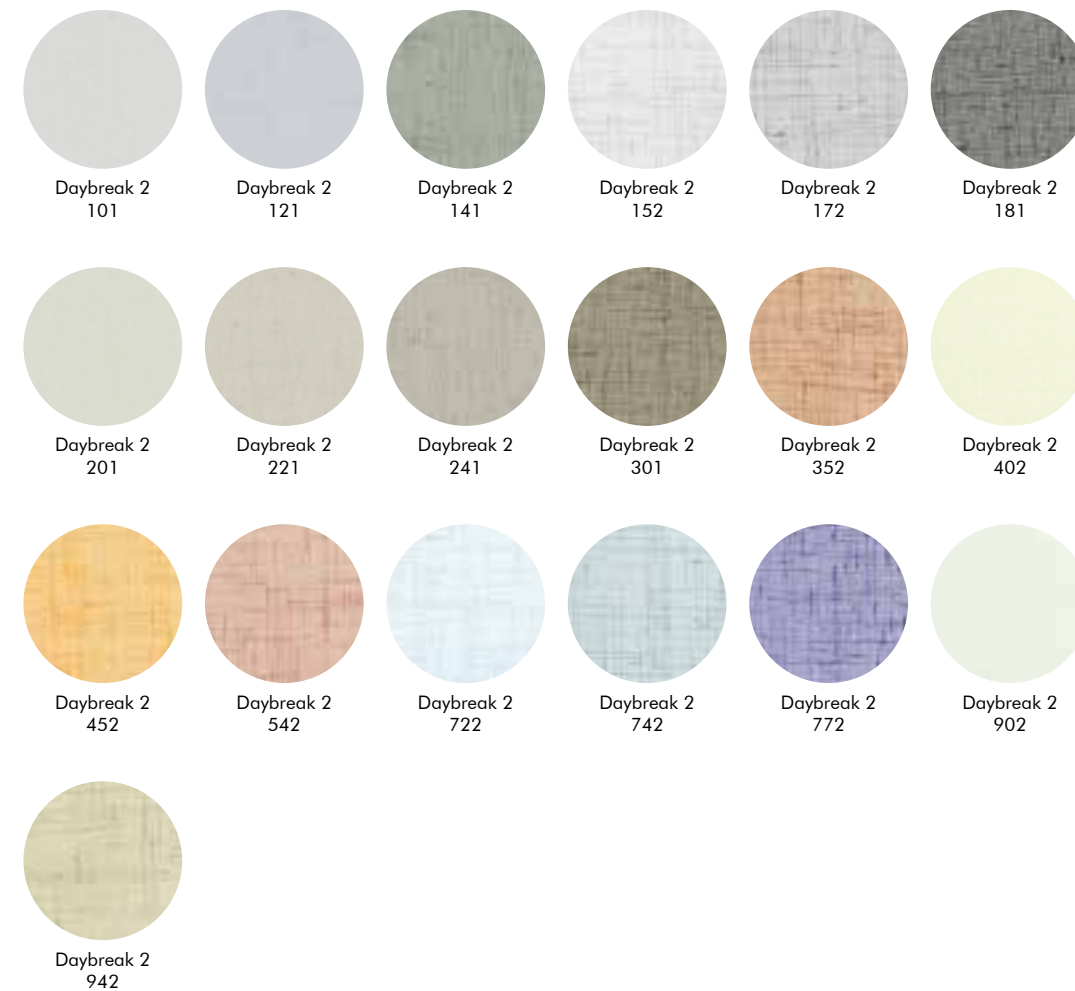


Daybreak 2

kvadrat



Characteristics Transparent
Composition 100% polyester FR
Weight App. 270 g/lin.m
Flammability EN 13 773 class 1 | BS 5867 part 2 type B | DIN 4102 B1 | SN 198 898 5.2 | NF D 92 507 M1 | UNI 9177 classe 1 | AS/NZS 1530.3 | IMO A.471 (XII)
Fastness to light Note 5-7, ISO 105-B02
Maintenance Washable at max. 60°C. Drip drying
 Ironing will be necessary



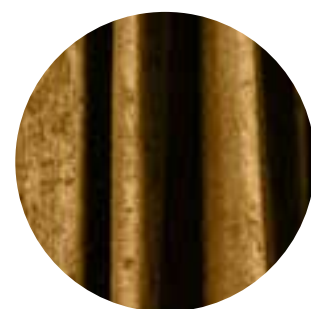
CUR B

DAYBREAK 2
VELVET

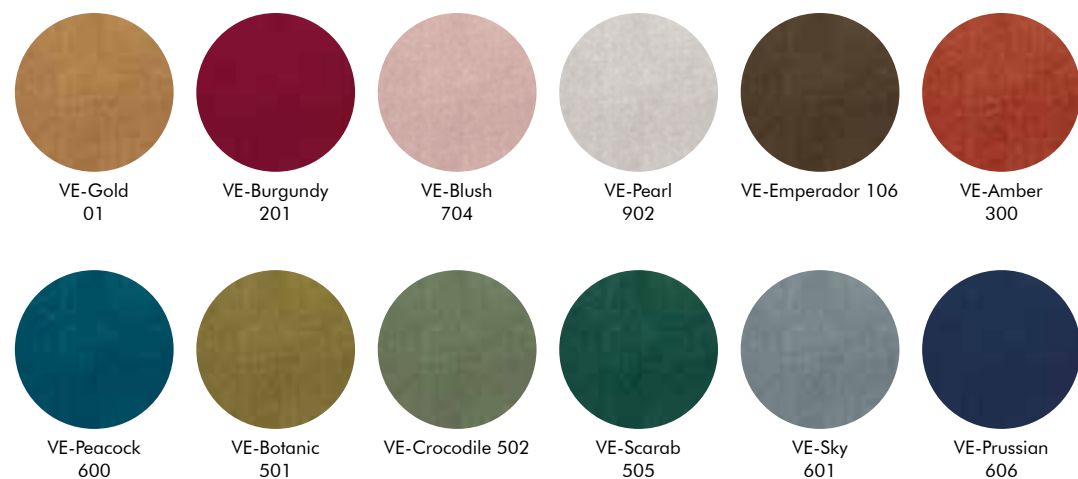
CUR B

DAYBREAK 2
VELVET

Velvet

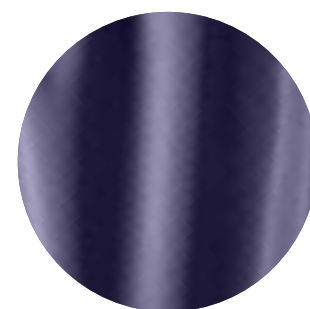


Characteristics Acoustic, Opaque
Composition 100% PES
Weight 375 g/m² | 11.06 oz/yd²
Width 140 cm | 55.12"
Thickness 0,7mm | 0.0275"
Abrasion resistance >100.000 Martindale
Flammability USA: CAL TB 117
Fastness to light EU: 4-5
Fastness to rubbing EU: Wet 4 | Dry 4-5
Pilling EU: 4-5
Match Weight ±5% | Width ±2%
Maintenance Washable at 40°C. Drip drying.

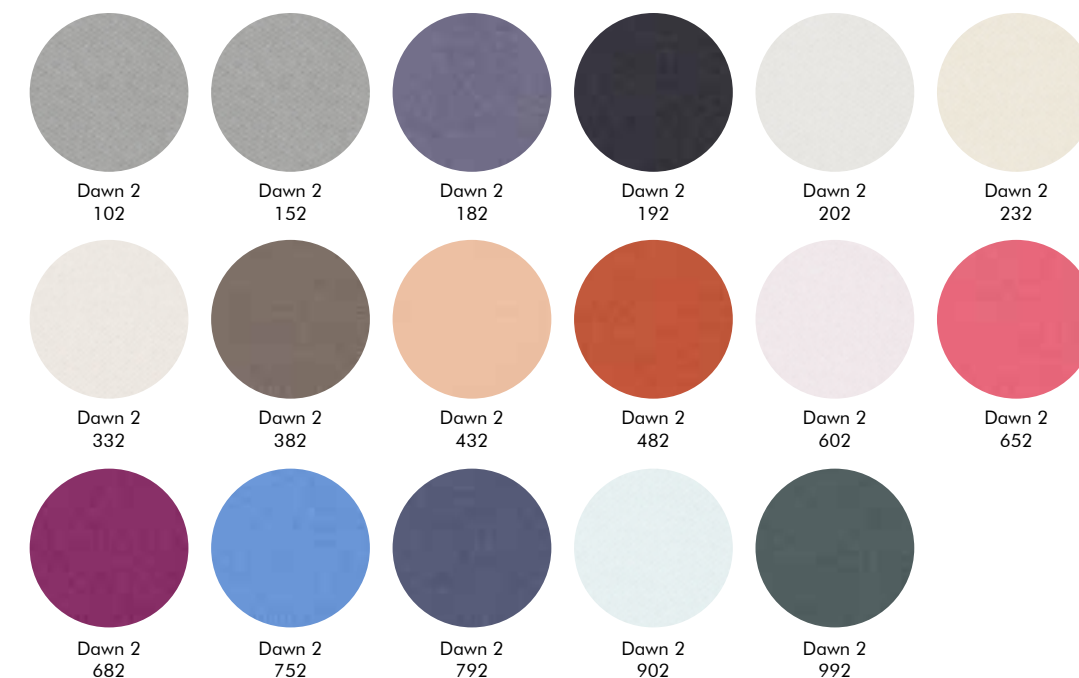


Dawn 2

kvadrat



Characteristics Acoustic, Opaque, Light transmittance of 0-0,2% (DIN EN 410)
Composition 100% polyester FR
Weight App. 780 g/lin.m
Flammability EN 13 773 class 1 | EN 13501, B-s1, d0 | BS 5867 part 2 type B | DIN 4102 B1 | SN 198 898 5.2 | NF D 92 507 M1 | UNI 9177 classe 1
Fastness to light Note 5-7, ISO 105-B02
Maintenance Washable at max. 60°C. Half wash load. Drip drying. Ironing might be necessary when washed at 60°C.



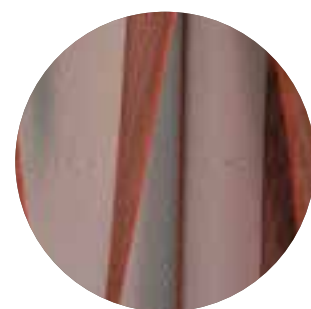
CUR C

DAWN 2
ZULU 2

CUR C

DAWN 2
ZULU 2

Zulu 2

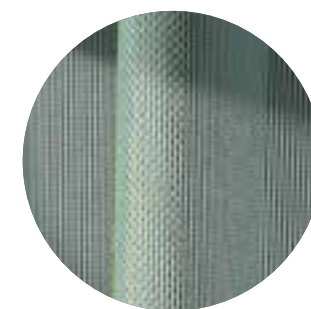


Characteristics Transparent
Composition 100 % Trevira CS
Weight App. 300 g/lin.m
Flammability EN 13 773 class 1 | BS 5867 part 2 | DIN 4102 B1 | NF P 92 507 M1 | UNI 9177 classe 1 | IMO FTP Code 2010:Part 7
Fastness to light Note 7, ISO 105-B02
Maintenance Washable at 40°C. Dripdrying



kvadrat

Drops



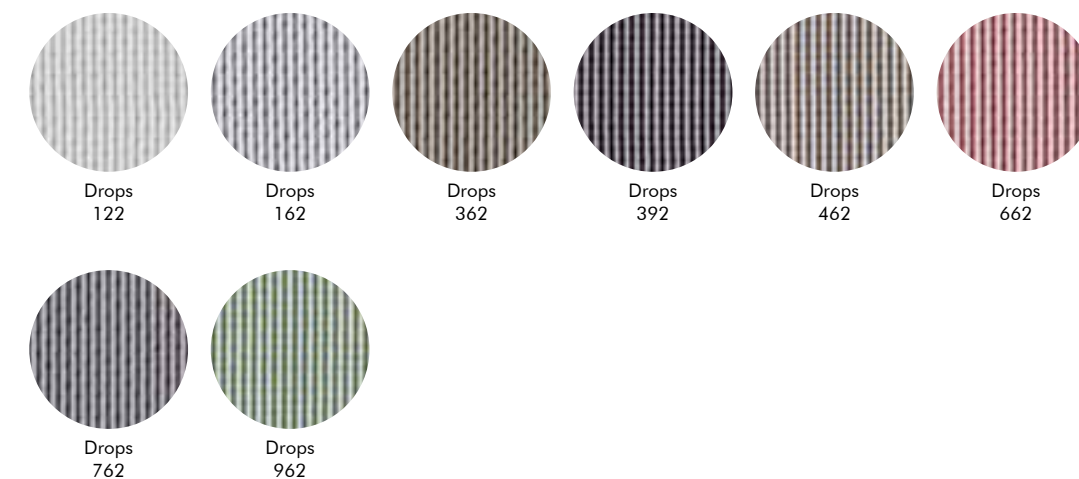
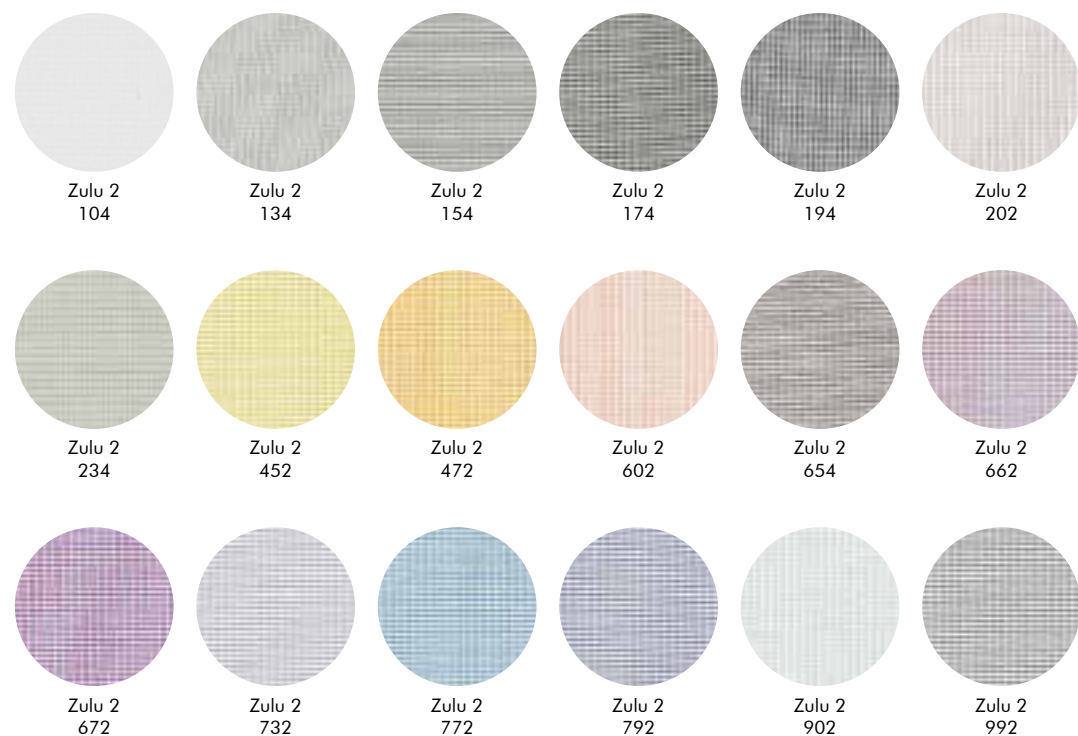
Characteristics Transparent
Composition 100 % Trevira CS
Weight App. 225 g/lin.m
Flammability EN 13 773 class 1 | BS 5867 part 2 type B | DIN 4102 B1 | NF D 92 507 M1 | UNI 9177 classe 1 | FAR 25.853 | IMO FTP Code 2010:Part 7
Fastness to light Note 6-7, ISO 105-B02
Maintenance Washable at max. 60°C. Dripdrying.



kvadrat

CUR D

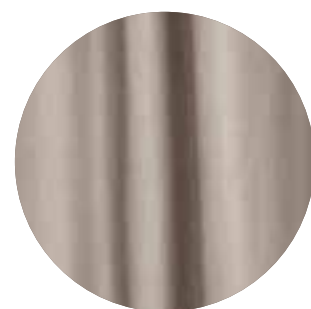
DROPS
MI CASA



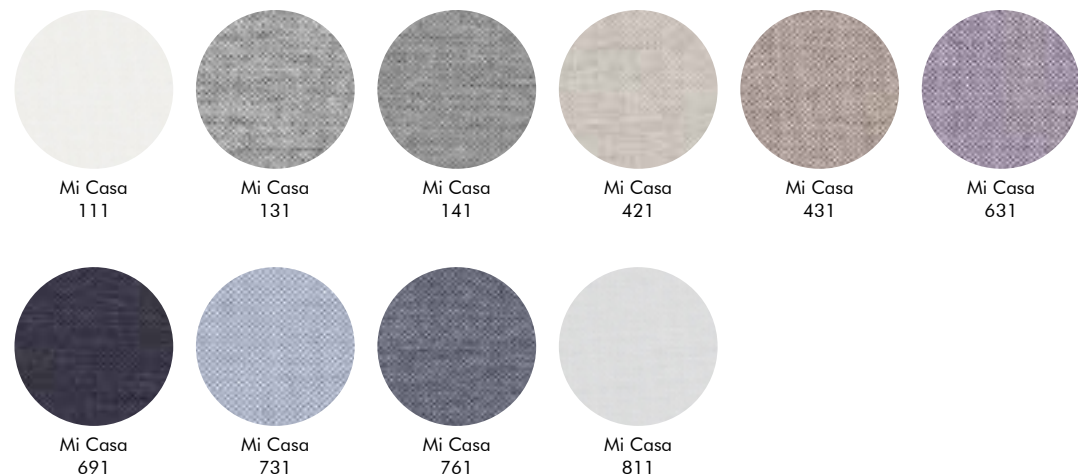
CUR D
DROPS
MI CASA

Mi Casa

kvadrat



Characteristics Acoustic, Opaque
Composition 100% Trevira CS
Weight App. 600 g/lin.m
Flammability EN 13 773 class 1 | BS 5867 part 2 type B | DIN 4102 B1
 | SN 198 898 5.2 | NF D 92 507 M1 | UNI 9177 classe 1
 | IMO FTP Code 2010:Part 7
Fastness to light Note 5-7, ISO 105-B02
Maintenance Washable at max. 60°C. Half wash load. Drip drying.
 Ironing might be necessary when washed at 60°C.



CUR F

BONUS
DROPS ACOUSTIC

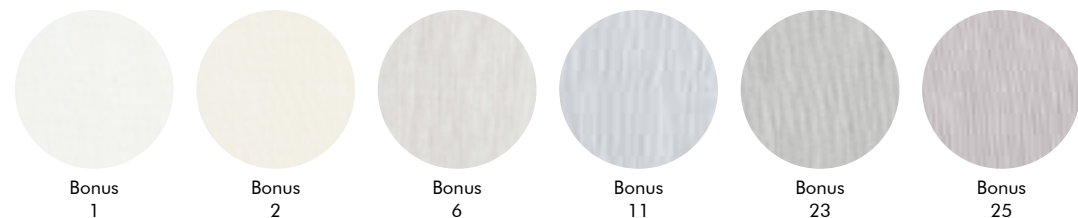
Bonus



Characteristics Acoustic, Translucent
Composition 100% wool
Weight 385 g/lin.m
Fastness to light 5 (ISO 1-8)
Maintenance Washable on hand wash cycle

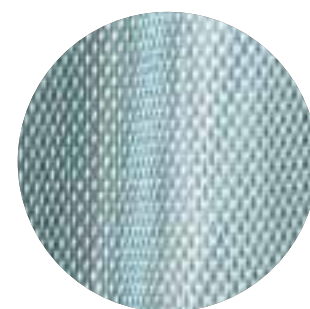


kvadrat



Bonus 1 Bonus 2 Bonus 6 Bonus 11 Bonus 23 Bonus 25

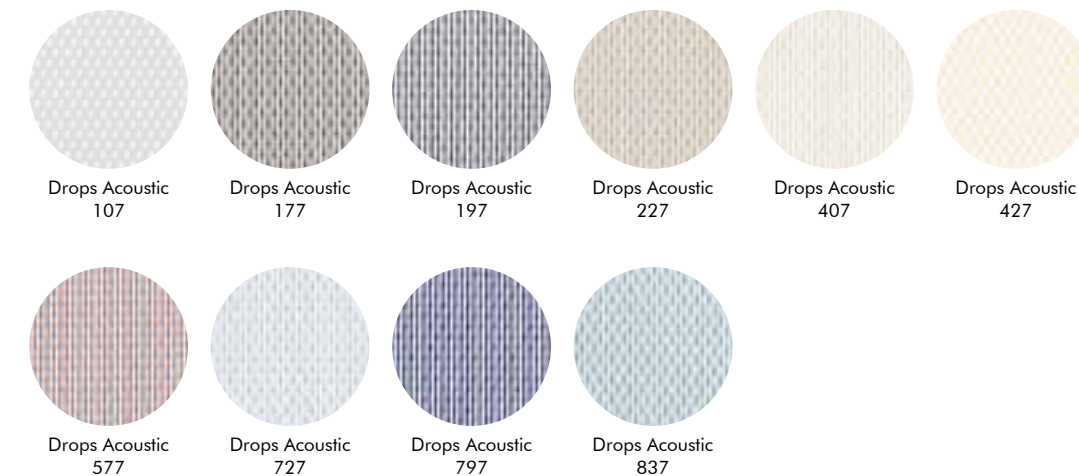
Drops Acoustic



Characteristics Acoustic, Transparent, Light transmittance of 31-46% (DIN EN 410)
Composition 100% Trevira CS
Weight App. 315 g/lin.m
Flammability BS 5867 part 2 type B|DIN 4102 B1|EN 13773 Class 1
|IMO FTP Code 2010:Part 7|NF P 92 507 M1|SN 198 898
5.2|UNI 9177 classe 1
Fastness to light Note 7 ISO 105-B02
Maintenance Washable at max. 60°C. Drip drying.



kvadrat



Drops Acoustic 107 Drops Acoustic 177 Drops Acoustic 197 Drops Acoustic 227 Drops Acoustic 407 Drops Acoustic 427
Drops Acoustic 577 Drops Acoustic 727 Drops Acoustic 797 Drops Acoustic 837

CUR F

BONUS
DROPS ACOUSTIC

CONTACT

BuzziSpace HQ

Groeningenlei 141
2550 Antwerp - Kontich
Belgium
info@buzzi.space
+32 3 846 10 00

Office | Manufacturing The Netherlands

Industrieweg 7a
5531 AD Bladel
The Netherlands
manufacture@buzzi.space
+31 497 387 478

Sh'Office Germany

Im Mariental 16
52064 Aachen
Germany
deutschland@buzzi.space
+49 241 99 77 64-0

Sh'Office UK

20 Ropemaker Street
EC2Y 9AR London
UK
uk@buzzi.space
+44 20 7253 3363

Office | Manufacturing USA

1200 Redding Drive
High Point, NC 27260
USA
us@buzzi.space
+1 336 821 3150

Sh'Office Chicago

222 Merchandise Mart Plaza Suite 10-111
Chicago, IL 60651
USA
us@buzzi.space
+1 336 821 3150

Sh'Office New York

45 West 21st Street - 3rd floor
NY 10010
USA
us@buzzi.space
+1 336 821 3150

BuzziBracks

Curtain Collection



www.buzzi.space

