



# Product Specification Sheet

## BuzziDome EU

— By BuzziSpace Studio

### Elegant acoustic lighting

Meet BuzziDome, a modern noise-reducing light with a refined semi-dome shape. BuzziDome's concave design, coupled with its acoustic foam element, acts as an excellent diffuser and absorber of sound. Therefore, BuzziDome provides exceptional acoustic treatment for any setting.

A recessed LED light source, accentuates the pendant's meticulous craftsmanship while also emitting a warm, functional light. BuzziDome accommodates the demand for both sound absorption and light, being the perfect fit for workplaces, hospitality settings, and break-out areas. Pick yours from a wide range of colorful upholstery options. It will definitely complement the aesthetic scheme of your interior.



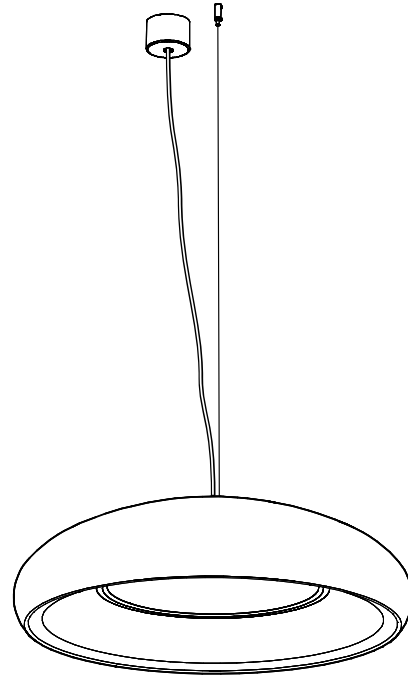
# The Family

**Model**

**BuzziDome**

**Lighting Unit**

**LED Disk  
Ø 470**



---

Required order information

1. Fabric (CAT -> Collection -> Color)
2. Mounting Option

# Lighting Data

---

## Lighting Unit

LED Disk Ø 470



The PMMA diffuser ensures an optimal light spread and efficiency. It creates a very diffuse light surface without any dottiness.

The light source of the BuzziDome is a LED PCB, containing 36 low power LED's.

On Request: UGR 19

To achieve a UGR 19, the product is fitted with a Prismatic diffuser instead of a milky diffuser. LED dots will be visible.

# Lighting specifications

## BuzziDome

Lighting Unit	Voltage	Wattage	Light Output Luminaire	Efficacy (Lm/W)	CRI	Dimming	Color Temperature	UGR	Standard (stock) On request (>LT)	Color Power Cable	Color Ceiling Canopy	Fabric Collection	Fabric Color	Mounting Option
LED Disk Ø 470	230V	29W	2545 Lm	88	90	1-10V	3000K	22	Standard	Transparent	White			
LED Disk Ø 470	230V	29W	2545 Lm	88	90	1-10V	3000K	19*	On request	Transparent	White			
LED Disk Ø 470	230V	29W	2545 Lm	88	90	1-10V	4000K	22	On request	Transparent	White	Use color codes below	Use color codes below	1 cable of 2 m or 4 m in black or alu
LED Disk Ø 470	230V	29W	2545 Lm	88	90	DALI	4000K	22	On request	Transparent	White			
LED Disk Ø 470	230V	29W	2545 Lm	88	90	DALI	3000K	22	On request	Transparent	White			

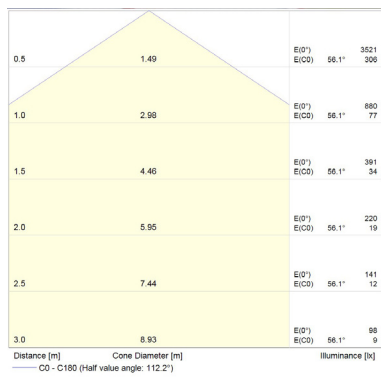
CE CB

\* To achieve a UGR 19, the product is fitted with a Prismatic diffusor instead of a milky diffusor. LED dots will be visible.

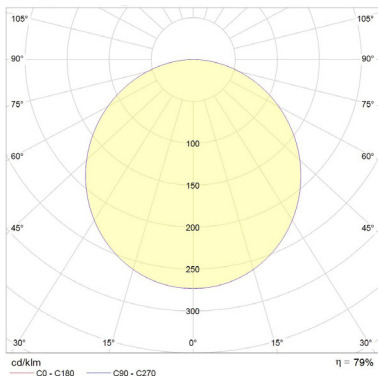
# Photometric Data

## BuzziDome LED Disk Ø 470

LED Disk Ø 470 Cartesian diagram



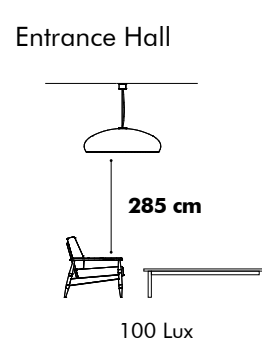
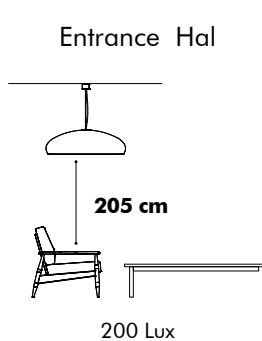
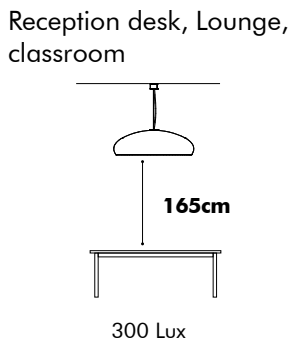
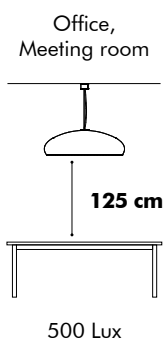
LED Disk Ø 470 Polar curve



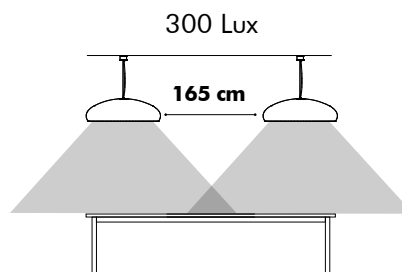
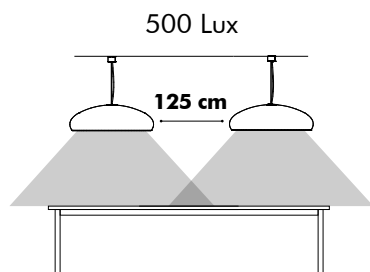
## Tips and Tricks - Light Options

To enlight your workplace with optimal lux levels take following measurements into account:

### BuzziDome LED Disk Ø 470



To ensure a continuous light spread into account take following distances inbetween the BuzziJets S | M | XL

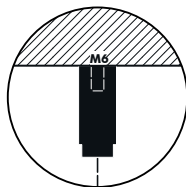
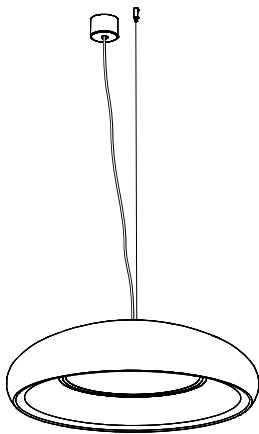


\* According to EN12464

# Product Data

## Fixing System

### Fixing System Acoustic Shade



BuzziDome is suspended on 1 cable of 2 or 4 m black or alu colored cables, with fixing system screw.

⚠ If installing on suspended ceiling, verify load capacity prior to installation.

### Acoustic Shade



The acoustic shade is upholstered top to bottom in a chosen fabric.

For certain fabrics, color variations may occur across the umbrella-shaped surface.

This is, especially, the case for color rich fabrics where differently colored yarns blend and result in different hues. This combination creates a lively play of irregular colors across the fabric. It's important to note that this isn't a defect or fault, but rather a unique characteristic of such fabrics.

This can occur when following fabrics are selected: Trevira CS & CS+, Remix 3 and Clara 2.

With a complex double-curved shape, some fabrics will cause the appearance of a waving motion close to the stitch. This typically applies to fabrics with visible yarns across the surface. It's not a defect, but a natural result following from the characteristics of product shape. This can occur when following fabrics are selected:

Trevira CS & CS+, Remix 3, Memory 2 and Clara 2.



Absorption



Diffusion



Low tone



Mid tone



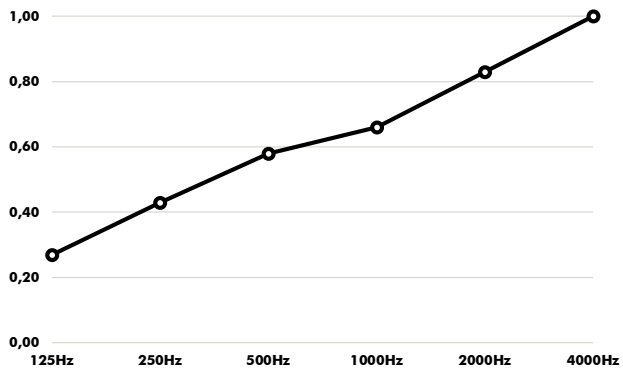
High tone

# Acoustics

---

## BuzziDome

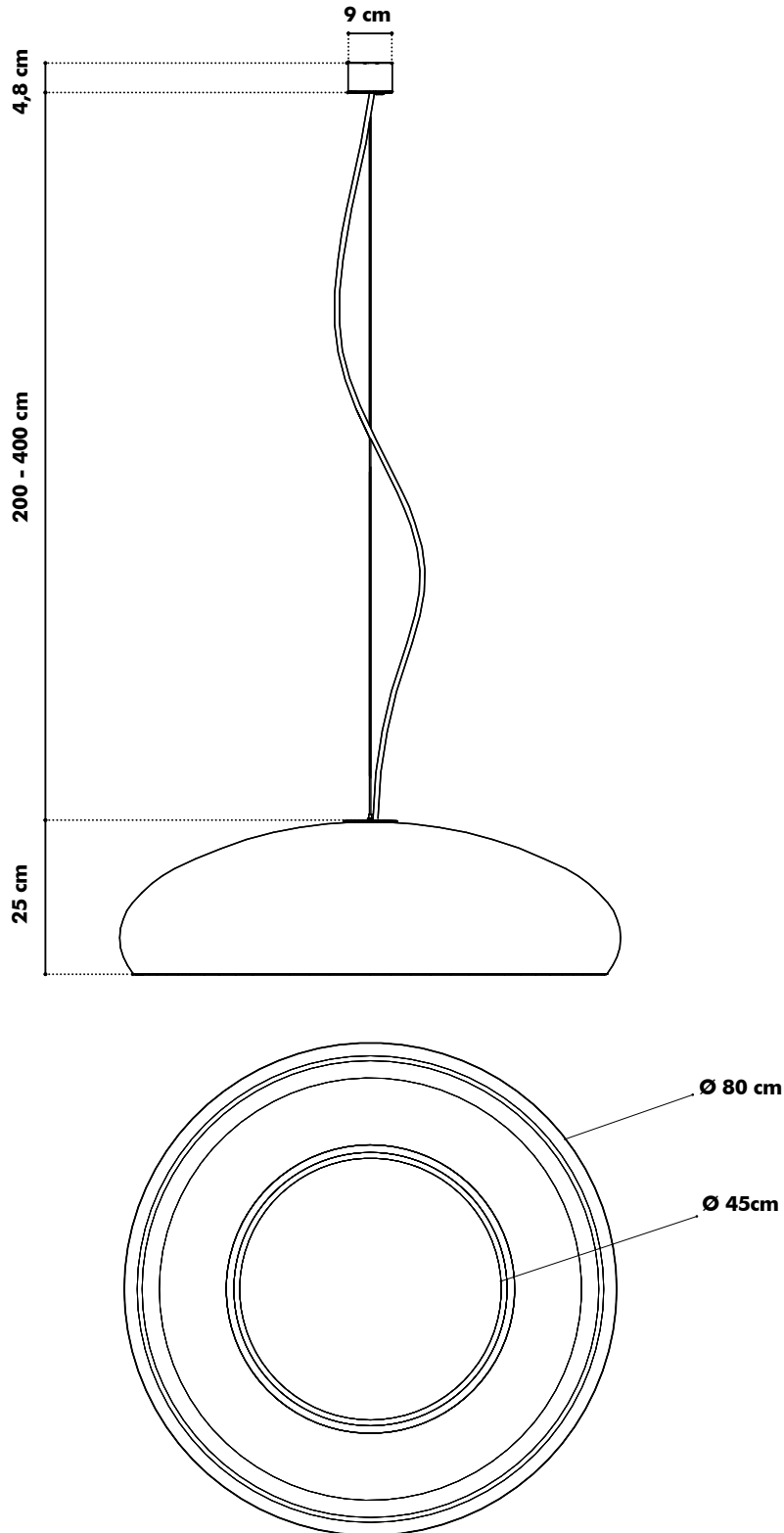
Equivalent sound absorption area in m<sup>2</sup> per object



Hz	Aeq/m <sup>2</sup>
125	0,27
250	0,43
500	0,58
1000	0,66
2000	0,83
4000	1,00

# Dimensions

## BuzziDome

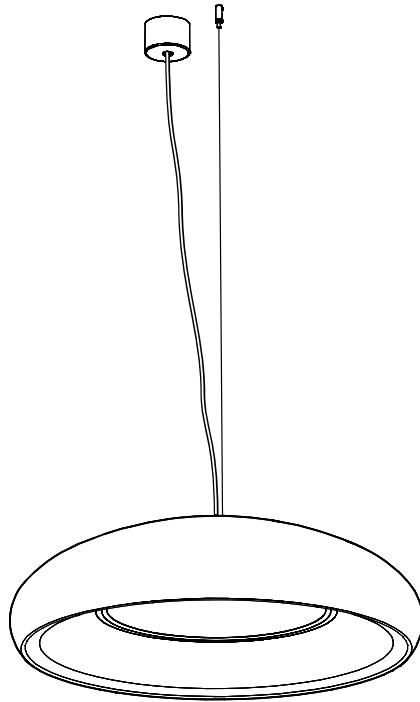





---

# Weights

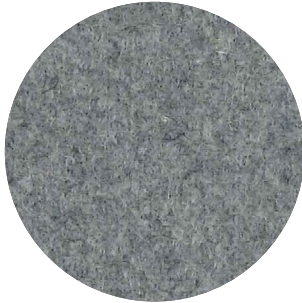
## BuzziDome



 13,5 kg

# Fabrics

## Fabric (45 colors)



**Category A**

**Composition** 70% Recycled Wool, 25% Recycled Polyacryl,  
5% Recycled Other Fabrics

**Weight** 405 g/m<sup>2</sup> | 11.94 oz/yd<sup>2</sup>

**Abrasion resistance** 40.000 Martindale, 50,000 Wyzenbeek

**Flammability** EU: EN 1021.1/2006 | BS EN 1021.1/2006 (cigarette).  
EN 1021.2/2006 | BS EN 1021.2/2006 (match)  
USA: CAL TB 117 | ASTM E84 CLASS A

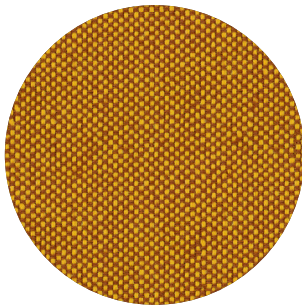
**Fastness to light** EU: 4 | USA 4

**Fastness to rubbing** EU: Wet 3-4 | Dry 4-5

**Fastness to crocking** USA: Wet 5 | Dry 5



## Trevira CS+ | CS (47 colors)



**Category A**

**Weight** 420 g/m<sup>2</sup> | 12.39 oz/yd<sup>2</sup>

**Composition** 100% Polyester, Trevira CS

**Abrasion resistance** 100.000 Martindale, 90,000 Wyzenbeek

**Flammability** BS 5852 part II: CRIB 5 | BS 7176 Medium Hazard  
USA: CAL TB 117 | M1 | B1 | EN 1021/1-2 | C1 |  
IMO Res. A652 (16)

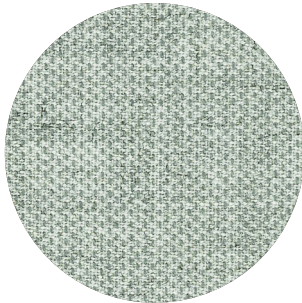
**Fastness to light** EU: 6 | USA 5

**Fastness to rubbing** EU: Wet 4-5 | Dry 4-5

**Fastness to crocking** USA: Wet 5 | Dry 5



## Clara 2 (24 colors)



**Category B**

**Composition** 92% new wool, 8% nylon

**Weight** 400 g/lin.m

**Abrasion resistance** 80.000 Martindale rubs, EN ISO 12947

**Flammability** EN 1021-1/2 | BS 5852, ignition source 2-3 | DIN 4102 B2  
NF D 60 013 | UNI 9175 1IM | US Cal. Tech. Bull. 117, Sec. E  
NFPA 260 | IMO A.652(16)

**Fastness to light** Note 5-7, ISO 105-B02

**Fastness to rubbing** (ISO) dry 4-5, wet 4

**Pilling** Note 4, EN ISO 12945



kvadrat

## Remix 3 (73 colors)

kvadrat



**Category B**

**Composition** 90% new wool, 10% nylon

**Weight** 415 g/lin.m

**Abrasion resistance** 100.000 Martindale rubs, EN ISO 12947

**Flammability** EN 1021-1/2 | BS 5852 part 1

Önorm B1/Q1 | NF D 60 013 | UNI 9175, 1IM

AS/NZS 1530.3 | Cal. Tech. Bull. 117-2013

NFPA 260 | IMO FTP Code 2010:Part 8

**Fastness to light** Note 5-7, ISO 105-B02

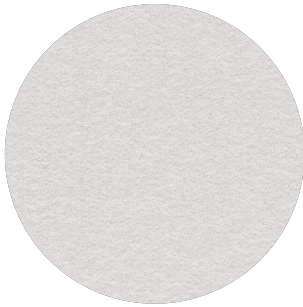
**Fastness to rubbing** (ISO) dry 4-5, wet 4

**Pilling** Note 4, EN ISO 12945



## Hero 2 (33 colors)

kvadrat



**Category C**

**Composition** 97% new wool, 3% nylon

**Weight** 580 g/lin.m

**Abrasion resistance** 45.000 Martindale rubs, EN ISO 12947

**Flammability** EN 1021-1/2 | DIN 4102 B2 | NF D 60 013

UNI 9175 1IM | US Cal. Bull. 117-2013 | NFPA 260

IMO A.652 (16)

**Fastness to light** Note 5-6, ISO 105-B02

**Fastness to rubbing** (ISO) dry 4-5, wet 4-5

**Pilling** Note 3-4, EN ISO 12945



## Tonus 4 (47 colors)

kvadrat



**Category D**

**Composition** 90% new wool, 10% Helanca

**Weight** 665 g/lin.m

**Abrasion resistance** 100.000 Martindale rubs, EN ISO 12947

**Flammability** EN 1021-1/2 | BS 5852 part 1 | DIN 4102 B2

Önorm B1/Q1 | NF D 60 013 | UNI 9175 1IM

US Cal. Bull. 117-2013 | NFPA 260 | IMO A.652 (16)

**Fastness to light** Note 5-7, ISO 105-B02

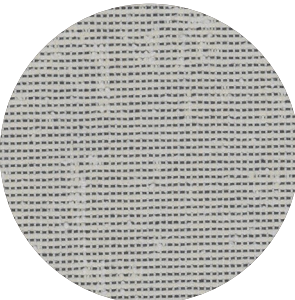
**Fastness to rubbing** (ISO) dry 3-5, wet 3-5

**Pilling** Note 3, EN ISO 12945



## Memory 2 (20 colors)

kvadrat



**Category** E

**Composition** 100% Trevira CS

**Weight** 700 g/lin.m

**Abrasion resistance**

35.000 rubs acc. to the Martindale method, EN ISO 12947

**Flammability** EN 1021-1/2 | DIN 4102 B1 | Önorm B1/Q1  
NF D 60 013 | NF P 92 507 M1 | UNI 9175 11M  
UNI 9177 classe 1 | US Cal. Tech. Bull. 117  
IMO A.652 (16)

**Fastness to light** Note 5-8, ISO 105-B02

**Fastness to rubbing** (ISO) dry 4-5, wet 4-5

**Pilling** Note 4, EN ISO 12945

