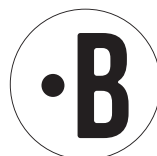
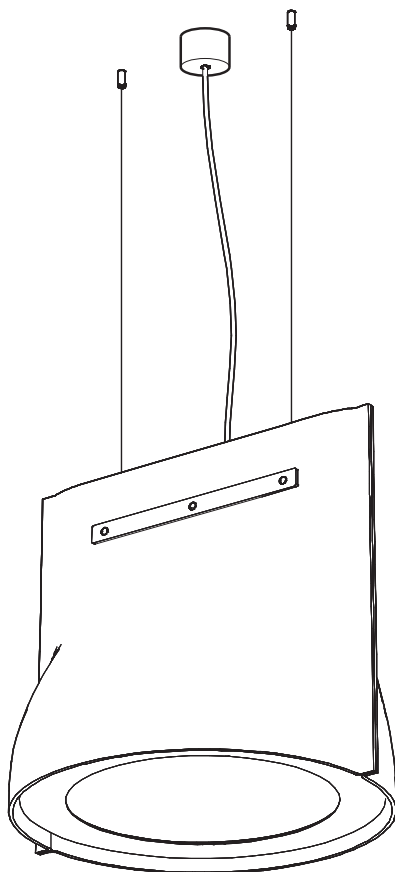


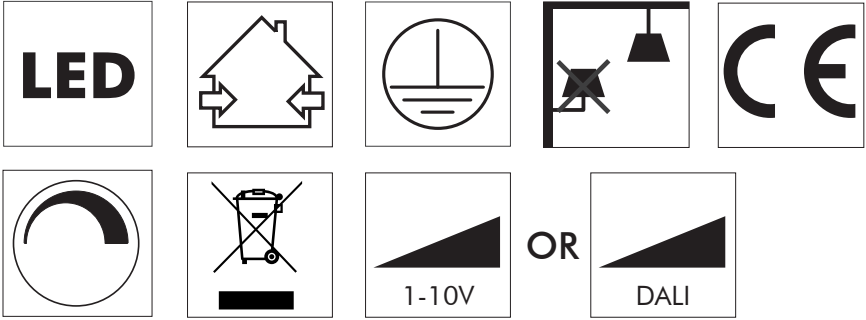
BuzziBell

INSTALLATION MANUAL

230V



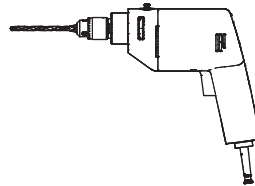
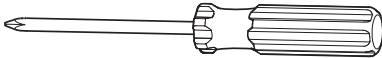
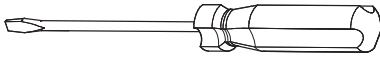
Technical info



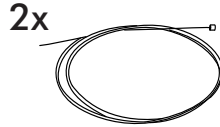
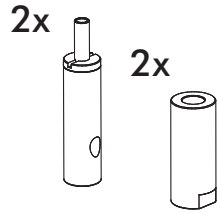
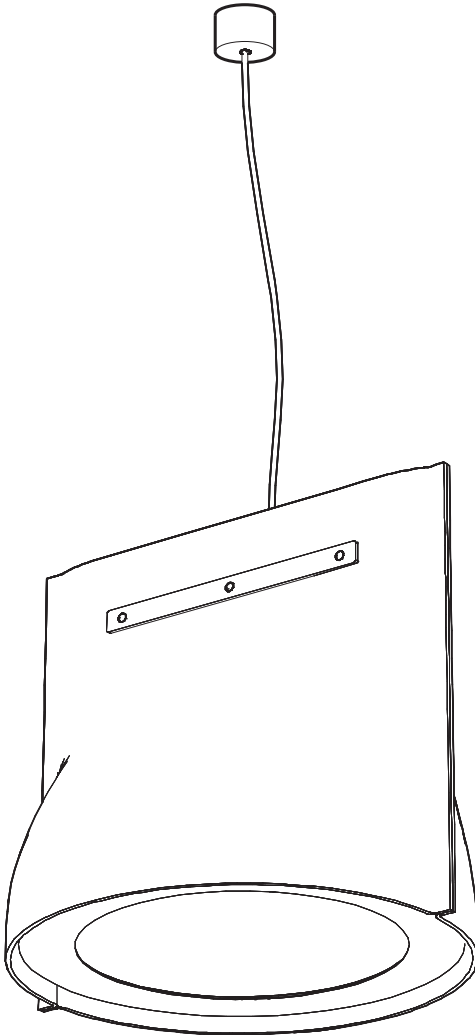
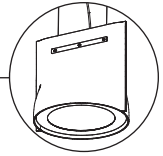
Environmental Protection

Waste electrical products should not be disposed of with household waste. Please recycle where facilities exist. Check with your Local Authority or retailer for recycling advice.

Excluded

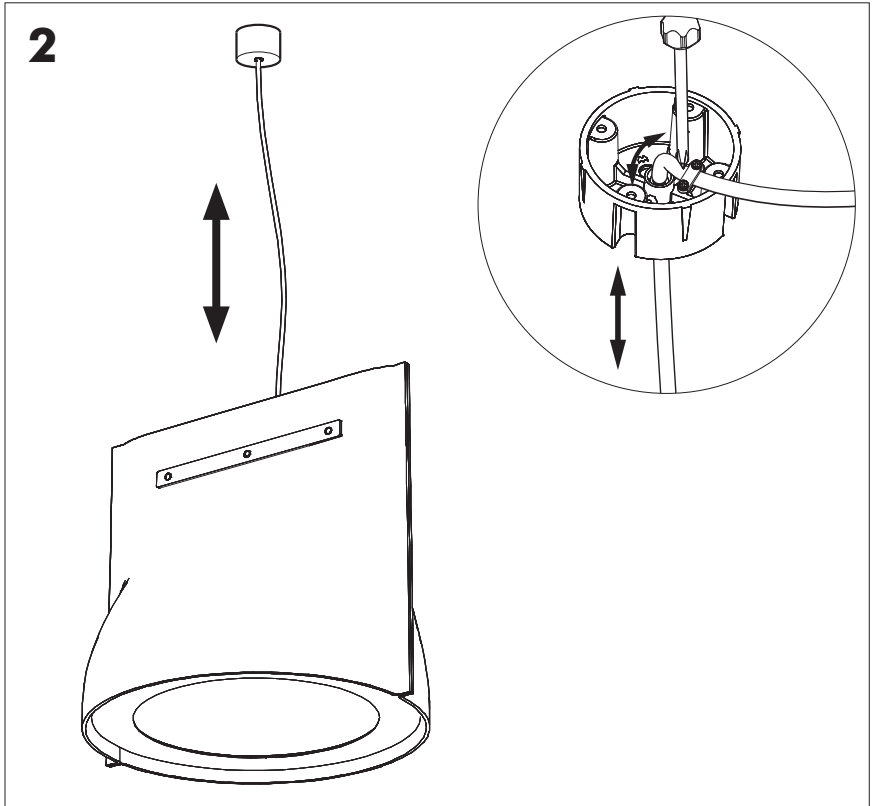
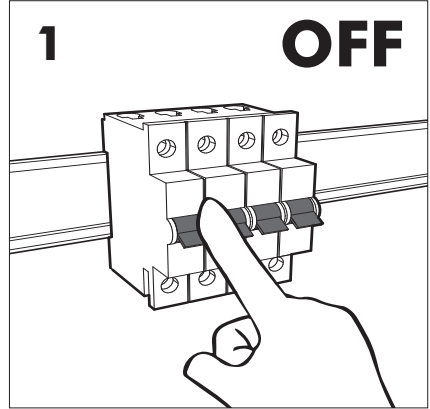
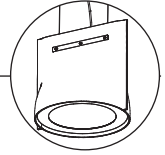


Included BuzziBell

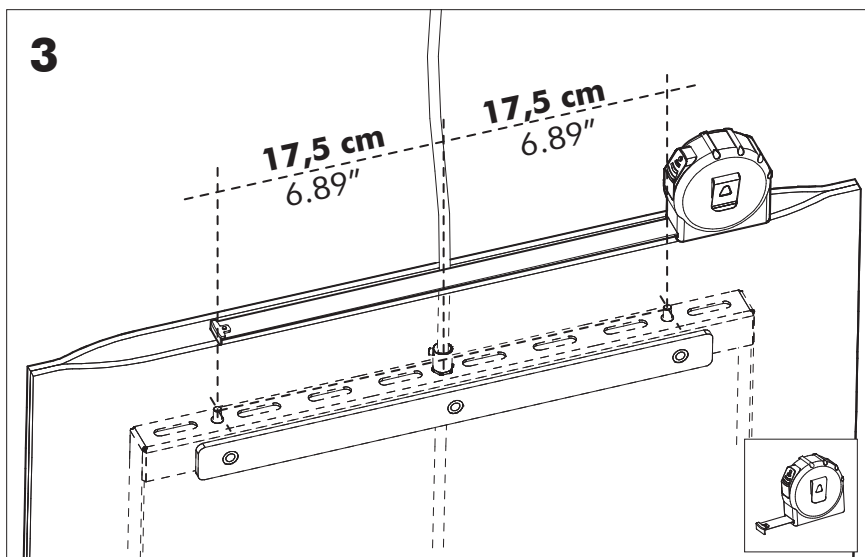


BuzziBell

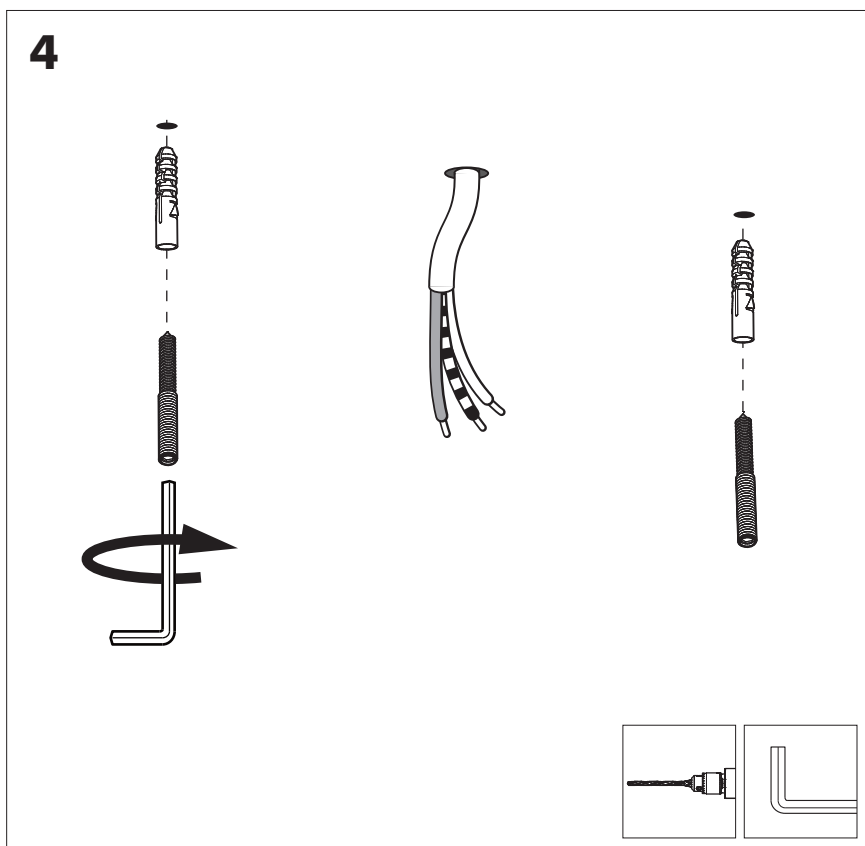
2 PERS. 



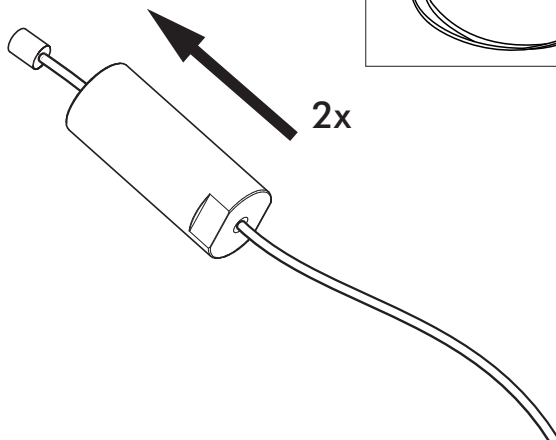
3



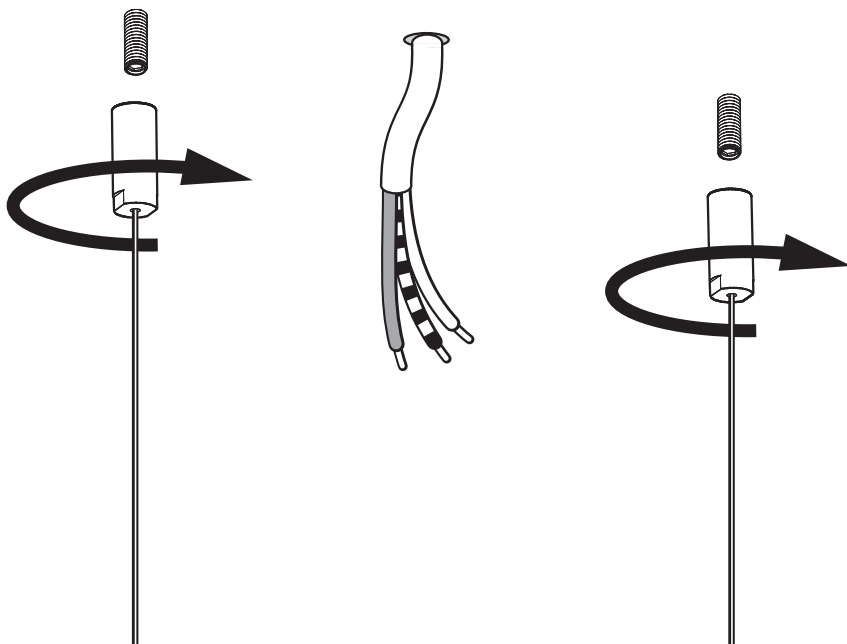
4



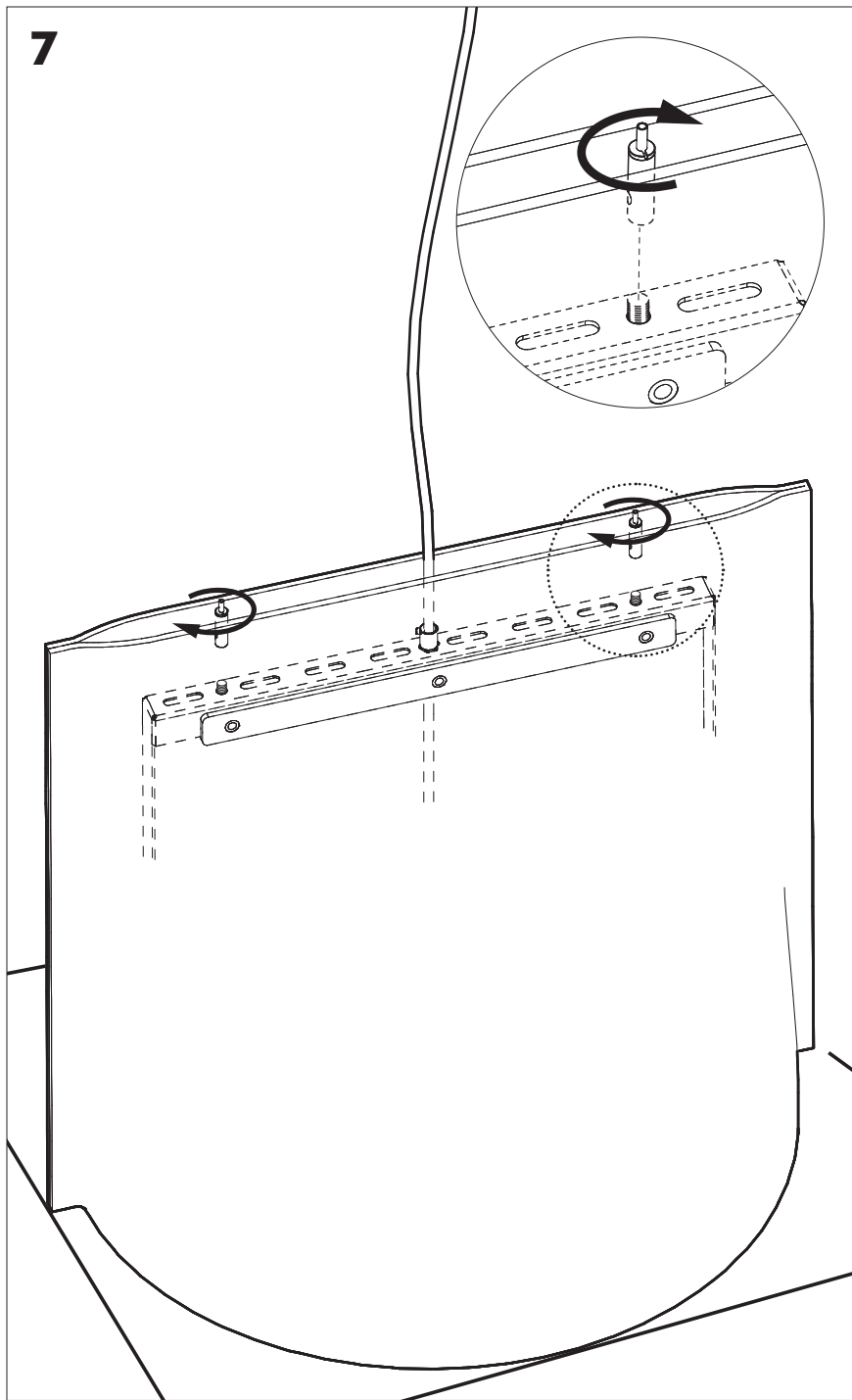
5

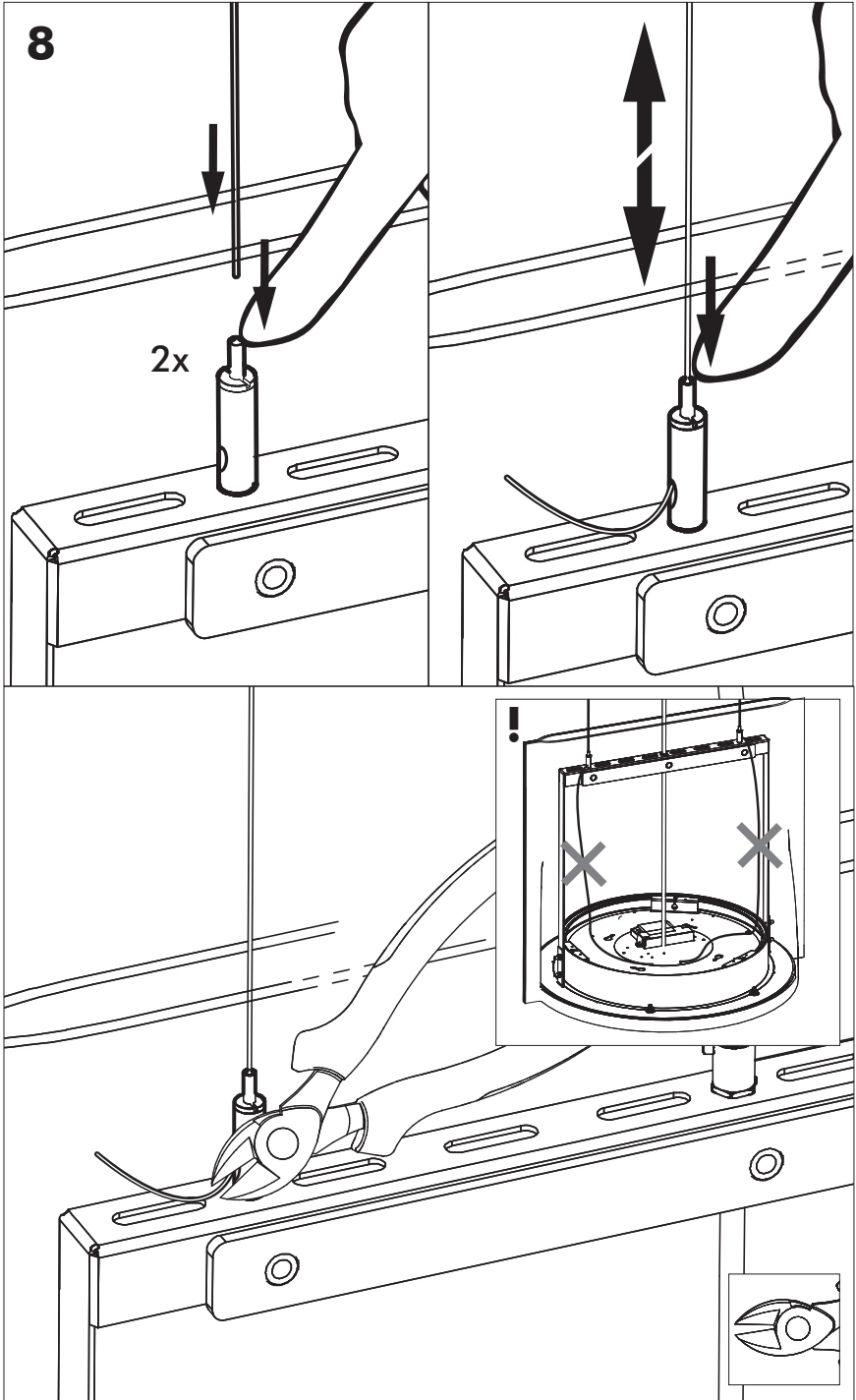


6

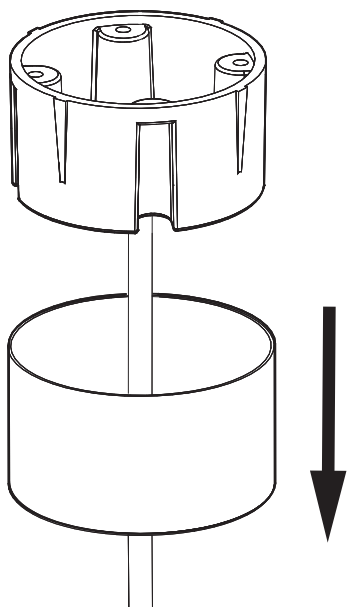


7

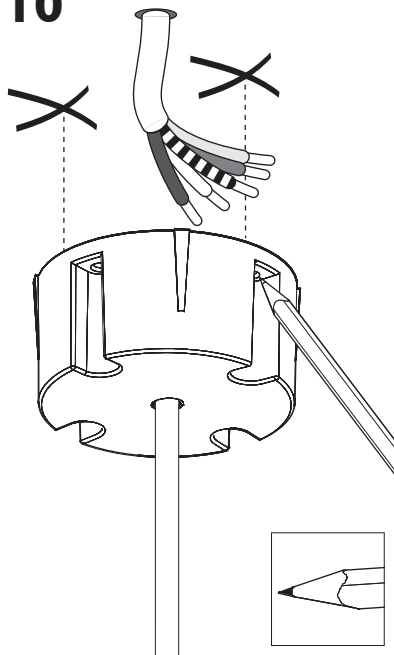




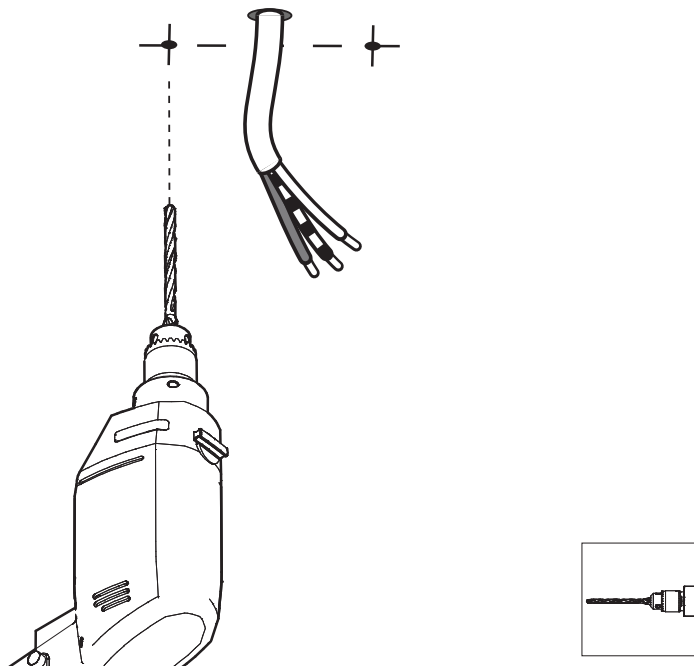
9



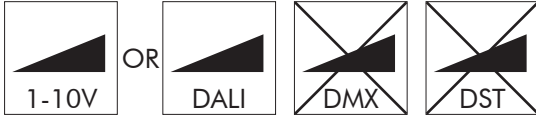
10



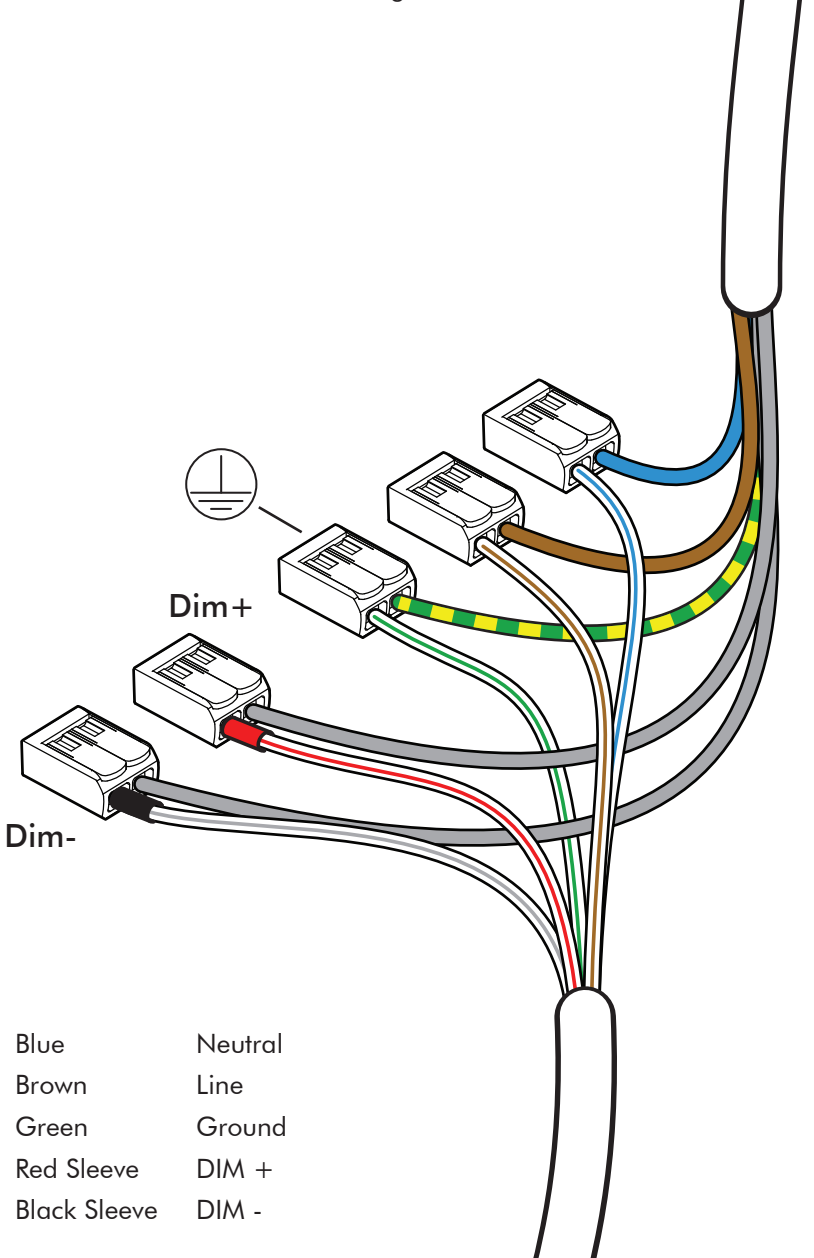
11



12a



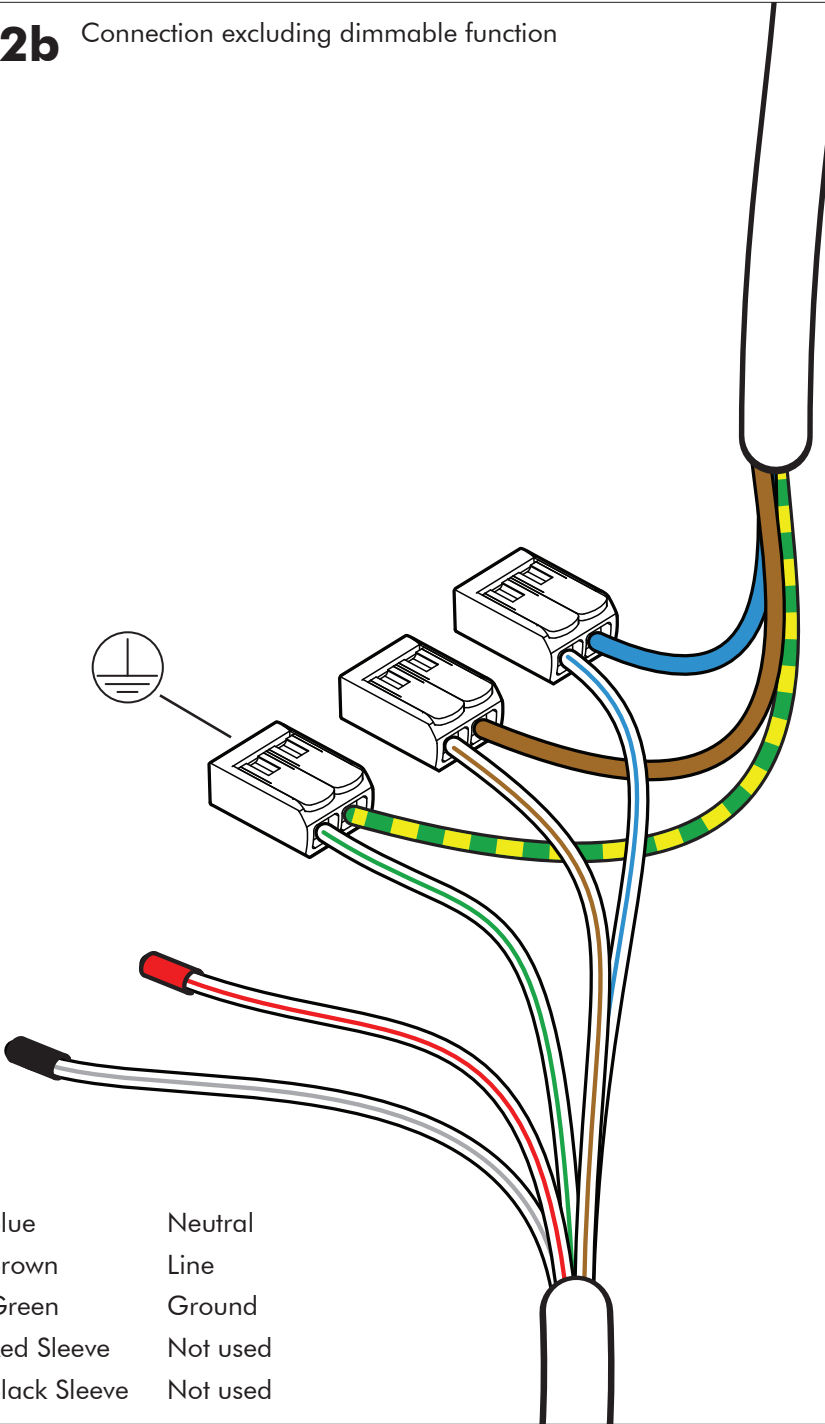
Connection including dimmable function



- Blue Neutral
- Brown Line
- Green Ground
- Red Sleeve DIM +
- Black Sleeve DIM -

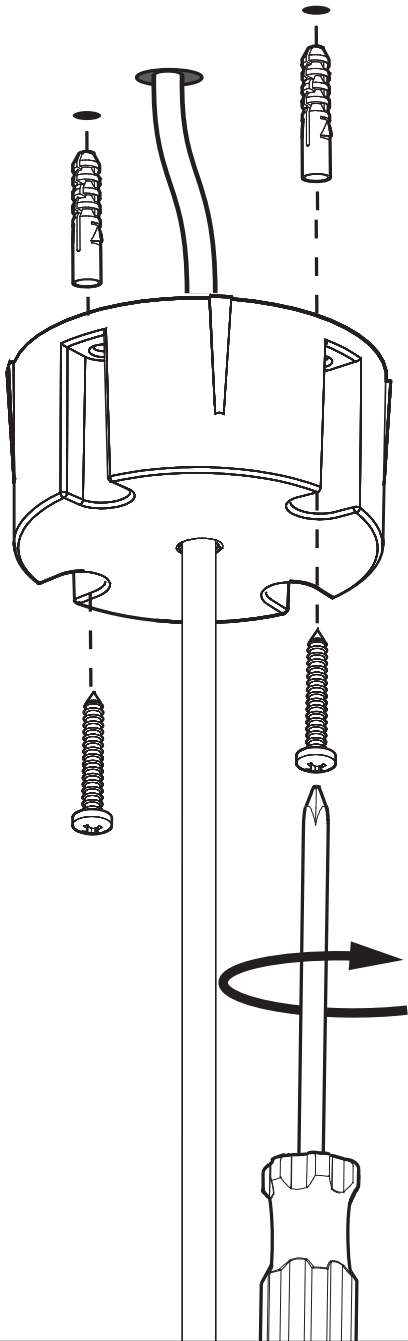
12b

Connection excluding dimmable function

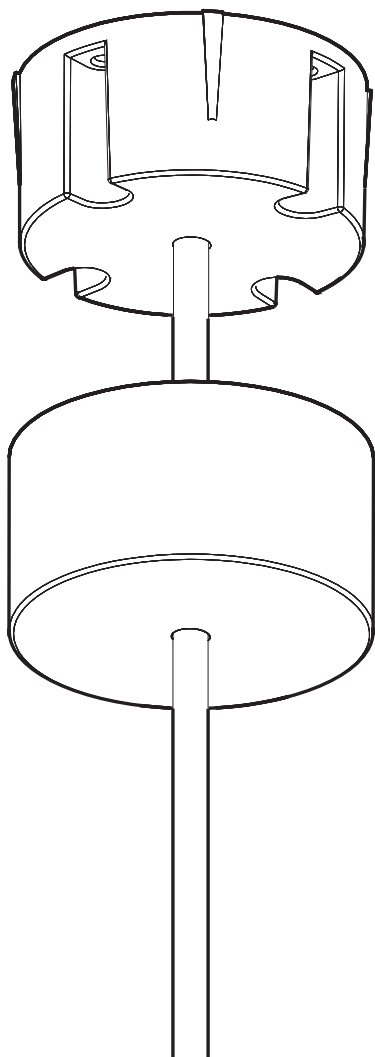


- | | |
|--------------|----------|
| Blue | Neutral |
| Brown | Line |
| Green | Ground |
| Red Sleeve | Not used |
| Black Sleeve | Not used |

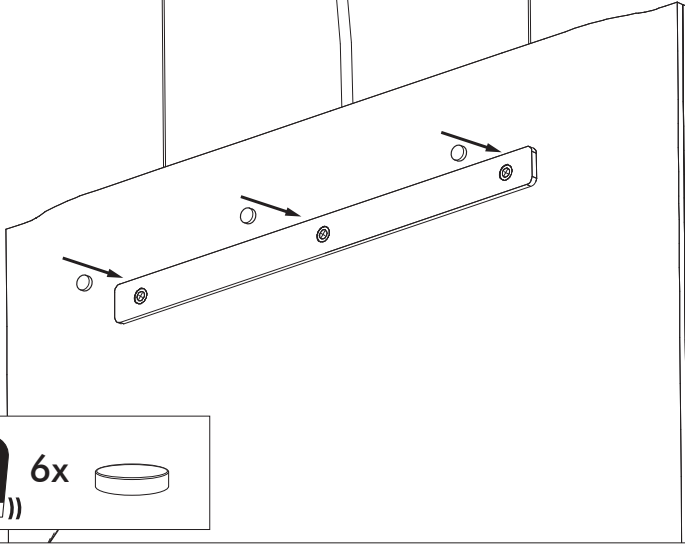
13



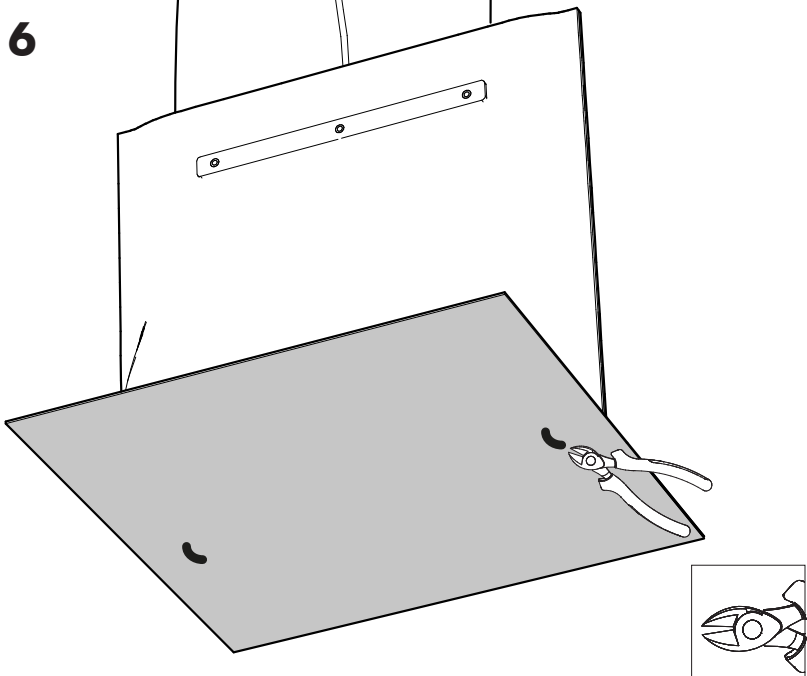
14



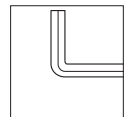
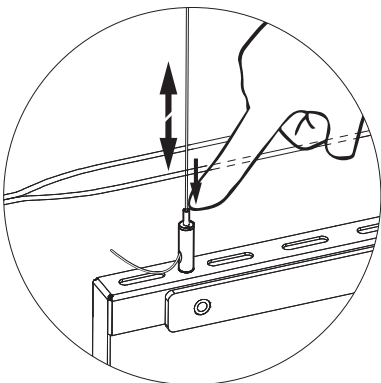
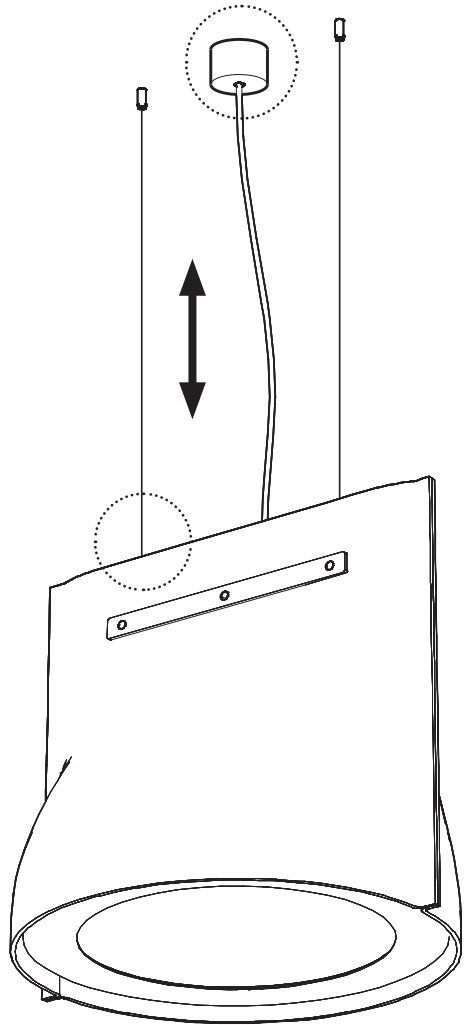
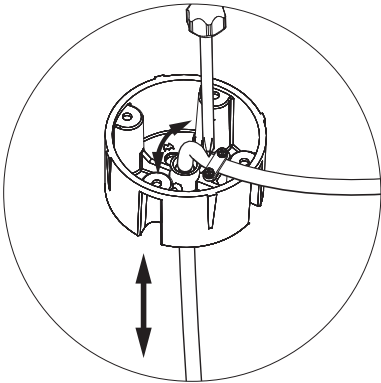
15



16



!



BuzziSpace Group NV
Italiëlei 8, 2000 Antwerp
Belgium

☎ +32 (0)3 846 10 00

✉ info@buzzi.space

🌐 www.buzzi.space



Doc nr.: A-0000001705/07

Last update: 29/11/2023