
BuzziBrickBack

Product Specification Sheet

This document contains technical information about the BuzziBrickBack



www.buzzi.space




Self-adhesive wall panel in sliced BuzziFelt


BrickBack is a unique looking sound absorbing and self-adhesive panel. Made of sliced BuzziFelt in the size and color-mix you prefer. You can pin all kinds of things to it.

It's functional and attractive in any office, home or hospitality environment.


Design by Sas Adriaenssens

General

-  BrickBack Horizontal Stripes | Vertical Stripes
Wall only
Unicolor | Bicolor | Multicolor

-  Front Layer: Sliced BuzziFelt
Back Layer: Self-adhesive BuzziSkin

No claims concerning deviation in color, size, and thickness can be accepted.

-  Because of the nature of the product this can variate. The risk is more likely in different batches.
Treat the surface with water-based primer before applying BuzziBrickBack for optimal adhesion results.
BuzziBrickBack can not be applied on vinyl or any other plasticized surface.

Acoustics



Absorption



Diffusion



Mid tones



High tones

Certifications



Content

Configurations	3
Finishes	4
Dimensions	7

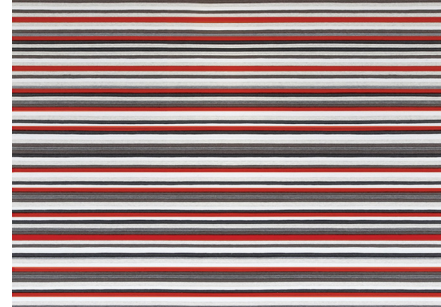
Configurations

BuzziBrickBack Horizontal stripes

🔑 BrickBack Horizontal stripes
Unicolor | Bicolor | Multicolor

🌲 Front Layer: Sliced BuzziFelt
Back Layer: Self-adhesive BuzziSkin

✂ Min. W 40 cm | 15.75" H 40 cm | 15.75"
✂ Max. W 120 cm | 47.24" H 200 cm | 78.74"
✂ Tolerance 0,6 cm | 0.24"
✂ Thickness: ±1,4 cm | ±0.55"

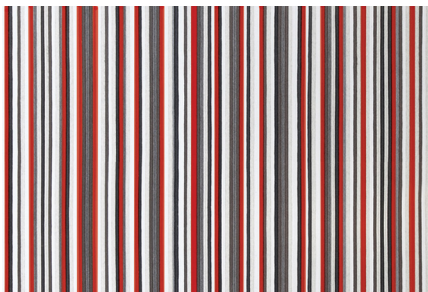


No claims concerning deviation in color, size, and thickness can be accepted.

Because of the nature of the product this can variate. The risk is more likely in different batches.

⚠ Treat the surface with water-based primer before applying BuzziBrickBack for optimal adhesion results.
BuzziBrickBack can not be applied on vinyl or any other plasticized surface.

BuzziBrickBack Vertical



🔑 BrickBack Vertical stripes
Unicolor | Bicolor | Multicolor

🌲 Front Layer: Sliced BuzziFelt
Back Layer: Self-adhesive BuzziSkin

✂ Min. W 40 cm | 15.75" H 40 cm | 15.75"
✂ Max. W 120 cm | 47.24" H 200 cm | 78.74"
✂ Tolerance 0,6 cm | 0.24"
✂ Thickness: ±1,4 cm | ±0.55"

No claims concerning deviation in color, size, and thickness can be accepted.

Because of the nature of the product this can variate. The risk is more likely in different batches.

⚠ Treat the surface with water-based primer before applying BuzziBrickBack for optimal adhesion results.
BuzziBrickBack can not be applied on vinyl or any other plasticized surface.

Finishes

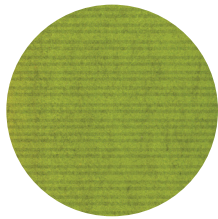
General remark



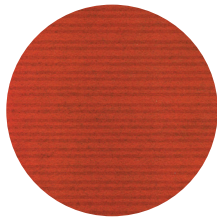
The assembly of the sliced felt stripes results in a discontinuing line. When installing several panels next to each other the stripes will not be a continuous line. The product is developed as such that the patterns between different panels are never build up in the same order, meaning the order of the Felt slices are randomly placed during manufacturing . You will see the seam and the panels will not match up. This is for all versions. No claims concerning deviation in color, size, and thickness can be accepted. Because of the nature of the product this can variate. The risk is more likely in different batches.

 100% Recycl P.E.T. Felt   

Unicolor



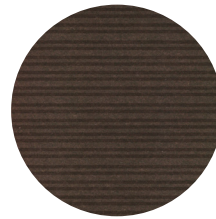
Lime | Lime



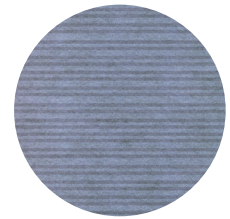
Orange | Orange



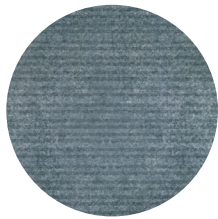
Red | Red



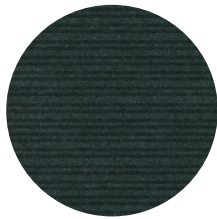
EcoBrown | EcoBrown



LightBlue | LightBlue



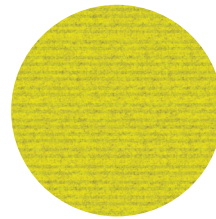
StoneGrey | StoneGrey



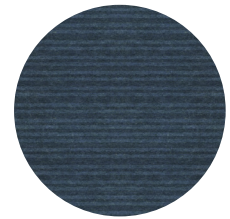
Anthracite | Anthracite



OffWhite | OffWhite



Curry | Curry



Jeans | Jeans



Mokka | Mokka

Bicolor



OffWhite | Lime



OffWhite | Orange



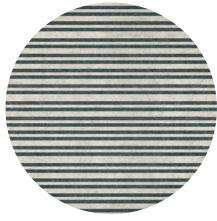
OffWhite | Red



OffWhite | EcoBrown



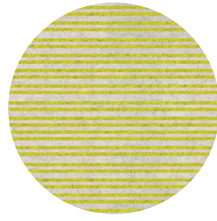
Offwhite | LightBlue



Offwhite | StoneGrey



OffWhite | Anthracite



OffWhite | Curry



OffWhite | Jeans



OffWhite | Mokka

Multicolor



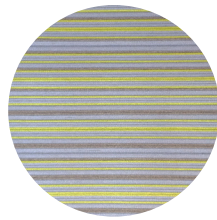
Grass

LightBlue
OffWhite
Lime



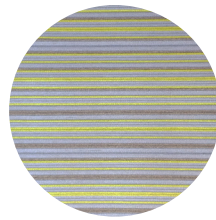
Savannah

LightBlue
EcoBrown
Orange



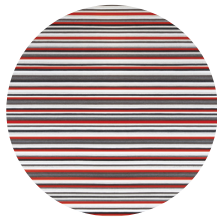
Toendra

LightBlue
StoneGrey
Lime



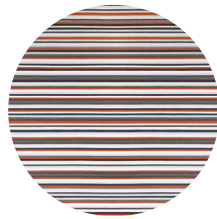
Zebra

Anthracite
StoneGrey
OffWhite



Jane

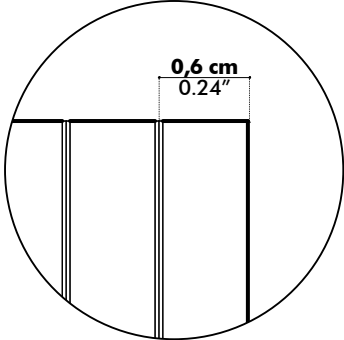
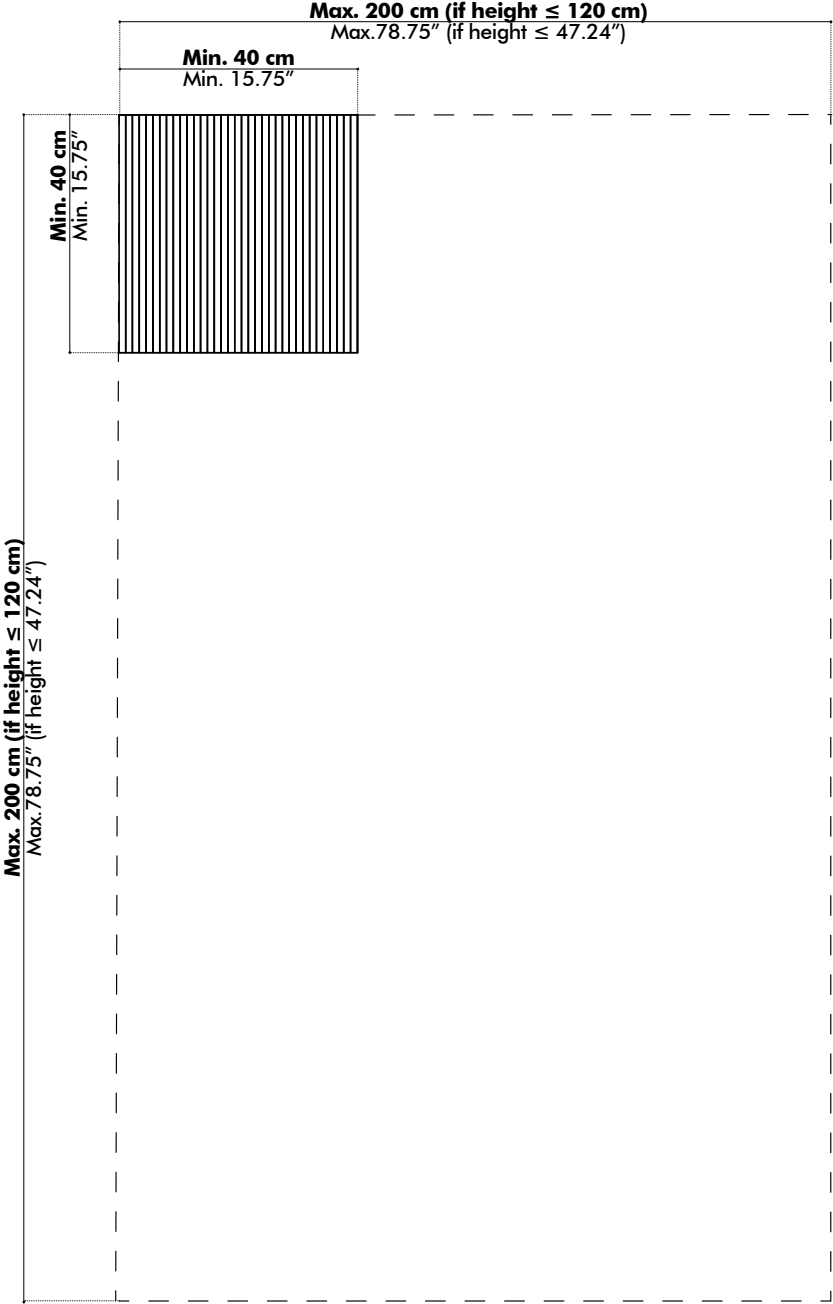
Anthracite
StoneGrey
EcoBrown
OffWhite
White
Red



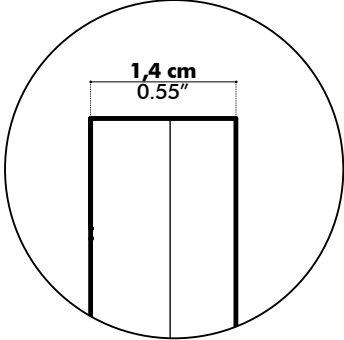
Sigma

Anthracite
StoneGrey
EcoBrown
OffWhite
White
Orange

Dimensions



Front View

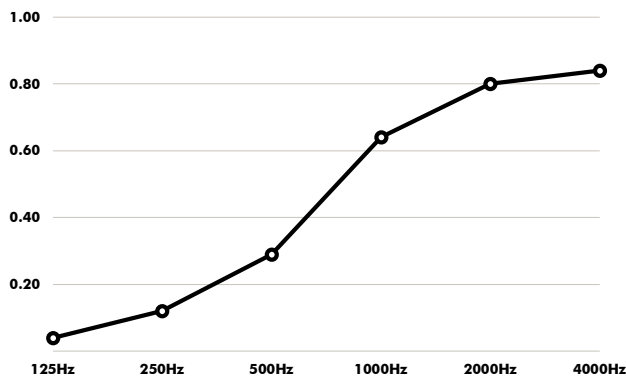


Side View

Acoustics

BuzziBrickBack

Absorption coefficient



Hz	α^s
125	0.04
250	0.12
500	0.29
1000	0.64
2000	0.80
4000	0.84

Absorption Values

α_w (ISO 11654) **0.35**

NRC (ASTM - C423) **0.50**

SAA (ASTM-C423) **0.46**

Glossary

All calculations are based on accredited lab measurements, official document available on Buzzi.Space

Definitions

α	Weighted absorption coefficient	(ISO 11654)
NRC	Noise reduction coefficient	(ASTM - C423)
SAA	Sound absorption average	(ASTM - C423)

Classification of sound absorbers NEN-EN-ISO 11654

- A** 0.90 | 0.95 | 1.0
- B** 0.80 | 0.85
- C** 0.60 | 0.65 | 0.70 | 0.75
- D** 0.03 | 0.55
- E** 0.15 | 0.25