

# Salmon\*

Our Salmon\* Sashimi is vibrant, versatile, and here to delight even the most discerning seafood lover's palate. A fatty texture, bold color, and subtle umami flavor will make it a star on any plate.

## Product Overview

Cut into a perfect saku block for ease of use, it's ideal for sushi rolls, poke, hand rolls, nigiri, sashimi, or any other dishes that calls for spectacular salmon sashimi – Made Boldly.

## Specs

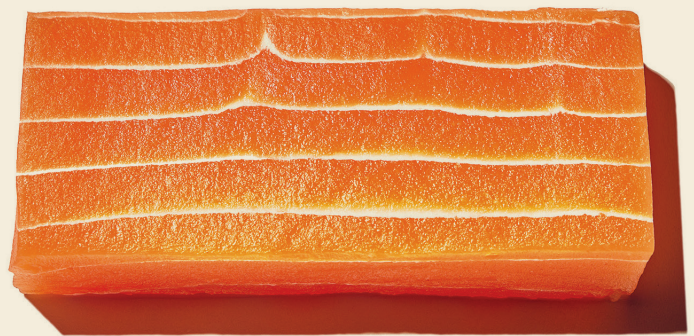
- \* 100% Vegan
- \* Non-GMO
- \* Soy Free
- \* No Artificial Ingredients

## Preparation

- Thaw from frozen overnight in the refrigerator (approx 8 hrs)
- Once thawed, press firmly to squeeze out excess water & pat dry
- Our Salmon\* sashimi is designed to be eaten chilled or at room temperature. [Do not cook]
- Slice, dice or marinate according to recipe instructions
- Please keep frozen until ready to consume; once thawed, consume within 2 days.

## Ingredients

Root Blend (Water, Modified Starch, Konjac Flour), Natural Flavor, Sorbitol, Seaweed Extract, Salt, Corn Extract, Hydrolyzed Wheat, Added Color.



Recipe:

## Sushi Medley



PRODUCT NAME	ITEM CODE	PACK SIZE	SERVINGS	CASE PACK	NET WEIGHT	GROSS WEIGHT	FROZEN LIFE	REFRIGERATED LIFE
BOLDLY™ SALMON*	BVN1FIS5	8.1oz	3	12-8.1oz	6.1LB.	7LB.	12 Months	2 Days

**Boldly**

Visit Us:  
[@boldlyfoods](https://www.boldlyfoods.com)  
[boldlyfoods.com](https://www.boldlyfoods.com)

Contact Us:  
415-619-2965  
[hello@boldlyfoods.com](mailto:hello@boldlyfoods.com)

