



S2 UNIVERSITY **EFFECTIVE** **REAL-WORLD** **TRAINING**



S2 GLOBAL

Training is a Critical Requirement for
Effective Screening Operations

“The most sophisticated
machines become worthless if
the people who operate them
and visually inspect the X-ray
images are not qualified to do
so.”*

*“Increasing X-ray image interpretation competency
of cargo security screeners,” International Journal of
Industrial Ergonomics, 2014.

S2 GLOBAL DELIVERS RECRUITMENT AND TRAINING PROGRAMS FOR SECURITY PROFESSIONALS THROUGH S2 UNIVERSITY

To realize significant benefits, S2 Global's programs are based on field-proven, unique principles including:

Real data, not simulations:

S2 Global uses image and data from real-world inspection situations – not simulations. The result: training that is as close to actual work experience as possible.

Expert trainers with operational experience:

S2 Global instructors have decades of operational and field experience working with US Customs and Border Protection (CBP) and the Department of Defense (DoD)

End-to-end approach: S2 Global offers a unique online learning system at S2University.com where students can complete certificate programs and become experts in their field.

Flexible Delivery Options: Combining expert trainers, leading-edge curriculums, and an online learning system, S2 Global can deliver a training package tailored to your needs. Choose from the following delivery options:

S2 University Online + Regional Training Center

S2 Global can deliver training in one of our regional classrooms using our S2 University Online. Training uses live, on-site instructors.

S2 University Online + Customer Site Instruction

With Online + Customer Site Instruction, S2 Global works with you to implement the S2 University Online training program on local computers. In addition, students receive on-going, on-site classroom assistance from an S2 Global instructor. The instructor helps manage and administer training, answer student questions, conduct assessments, review test results and explain important concepts.

S2 Global Training Academy

The Training Academy solution is ideal for customers with a long-term training requirement. S2 Global can assist in identifying and preparing a training location, recruiting and training staff, augmenting local training resources, developing curriculums and course materials, and recruiting, pre-screening and enrolling students.

S2 University Online

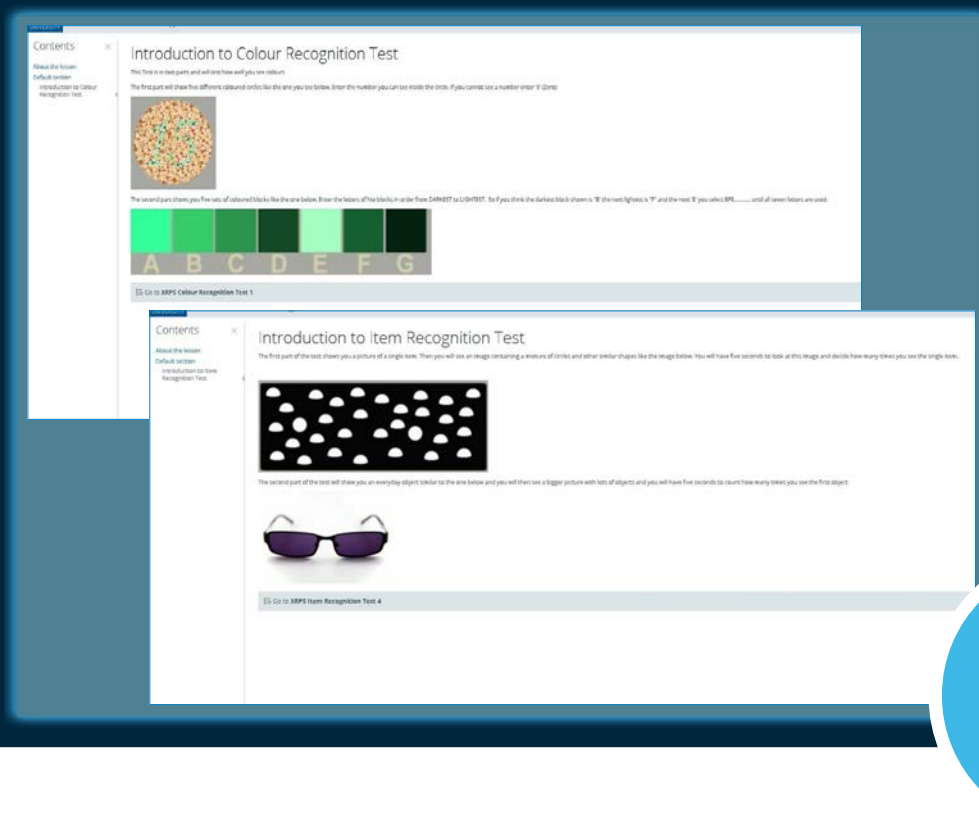
www.S2University.com

For self-paced certifications, S2 University is available online 24/7. Students are enrolled in courses which is administered and monitored by your agency.



TRAINING BEGINS WITH IDENTIFYING CANDIDATE CAPABILITIES

XRPS (X-Ray Pre-Screener) assesses visual acuity and analytical aptitudes of potential image analysts.



XRPS is an interactive recruitment tool that ensures that potential image analysts have the required visual and analytical abilities to be an effective image analyst.

Assesses candidates visual analysis, color recognition, spatial awareness and other skills and significantly improves the staff recruitment process.

XRPS - X-Ray Pre Screener Assessment

SYLLABUS NUMBER: AST-001

The XRPS Test is an S2 Global innovation and a core component of our training. It addresses the need to assess visual acuity and analytical aptitudes before hiring and training begins. XRPS is an interactive recruitment tool that tests color recognition, spatial recognition, pattern recognition, memory recall, threat detection and more. XRPS ensures that potential image analysts have the required visual and analytical abilities to be effective image analysts.

TESTS INCLUDED

Memory Recall

The Memory Recall test looks at how well you can remember everyday objects and the order you see them in. The test is comprised of 4 questions.

Color Recognition Test

The Color Recognition test is designed to test for color blindness. The test is in two parts and each part contains approximately five questions.

Location Awareness Test

The Location Awareness test will look at how well you can remember an object and where the object is located.

Spatial Awareness Test

The Spatial Awareness test looks at how you recognize objects when displayed at different angles. The test is in two parts each part contains approximately five questions.

Threat Recognition

The Threat Recognition test will look at how well you are able to find threat items in an X-ray image.

Pattern Recognition Test

The Pattern Recognition test contains shapes and patterns where you can test your ability to identify various shapes, patterns and sequences. The test is in two parts with each part containing approximately five questions.

Item Recognition Test

The Item Recognition test looks at how well you can remember more difficult patterns and everyday objects. The test is in two parts and contains approximately five questions in each part.

THE ONLY IMAGE ANALYSIS PROGRAM USING REAL-WORLD SCANS

S2 Global Training Image Analysis Fundamentals Certification Course*

SYLLABUS NUMBER: PRM-001

Day 1	Day 2	Day 3	Day 4	Day 5
<p>Navigation Course</p> <p>Scan Software Course</p> <p>Evaluation Lab</p> <p>Image Analysis Process Flow</p> <p>What Is Normal Course?</p> <p>Material Separation Course</p> <p>Wrap Up Discussion</p>	<p>Review Discussion</p> <p>Introduction to Image Interpretation</p> <p>Cargo Detection Course</p> <p>Contraband Detection Course</p> <p>Weapons, Narcotics & Explosives Detection Course</p> <p>Wrap Up Discussion</p>	<p>Image Recognition Quiz</p> <p>Anomaly Labs featuring images to include cargo conveyances, cargo shipments and private vehicles</p>	<p>Demo Image Lab Video</p> <p>Image Labs feature “real world” scan images. Images include cargo conveyances/ cargo shipments and or private vehicles as per the request of the client.</p>	<p>Image Labs</p>

*Example of customs certificate course

S2 Global trains operators to analyze x-ray images with the same system tools they will use everyday.



SUCCESSFUL METHODS AND PROCESSES ARE THE CORNERSTONE OF OUR IMAGE ANALYSIS FUNDAMENTALS CERTIFICATION

Cargo & Vehicle Image Analysis Certification

S2 University offers image analysts the most comprehensive program to read and detect anomalies in x-ray scans. Students start with the learning the methods and processes used in successful scanning operations. Then, using the same tools available on x-ray systems to view real world images, students start to use their knowledge to detect anomalies receiving feedback and taking short review tests during the process.

Courses Included

Scan Software

This course describes the tool functions used in the x-ray scanner and teaches how to apply them to scan images.

Image Analysis Process Flow

Using real-world images, this course teaches students established methodologies for efficiently and effectively analyzing X-ray images. Students will learn how to analyze images in a systematic and detailed process.

Material Separation

Introduction to how organic and inorganic materials appear in an x-ray image and instruction on the Material Separation tool functions.

What Is “Normal”

Using real-world images, students learn what “normal” or “clean” X-ray images of cargo containers and vehicles look like. Students learn a baseline understanding of “normal” images that they can then use when analyzing images for anomalies. Focusing on commercial vehicles, private vehicles and various shipping containers and trailers and normal or typical components within the structures, this course looks at different types of packing materials and cargo load patterns and how they appear on an X-ray scan image.





GIVE ANALYSTS THE TOOLS TO DETECT MORE

SYLLABUS NUMBER: PRM-002

What is Normal Cargo

The course presents a photo and scan image of the cargo followed by a live scan image where the student can apply the tool functions to view the cargo in detail. On the live scans the student is encouraged to look at the form, pattern and density of the cargo, while applying all the appropriate tool functions enabling them to see right into the cargo.

Introduction to Image Interpretation

The course introduces the student to the common components found in private vehicles, cars, buses and trucks as well as some of the more common types of cargo. The student will be able to see how these components and items look in scan images.

Contraband Detection

This course looks at the different methods of trafficking and the type of cargo that is trafficked including; weapons, drugs, incorrect and un-manifested cargo as well as contraband and restricted items

Weapons Detection

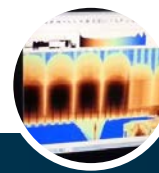
A look at different weapons and how they appear in scan images. The student will have the opportunity to work with live scans and use the tool functions to analyze and find concealed weapons.

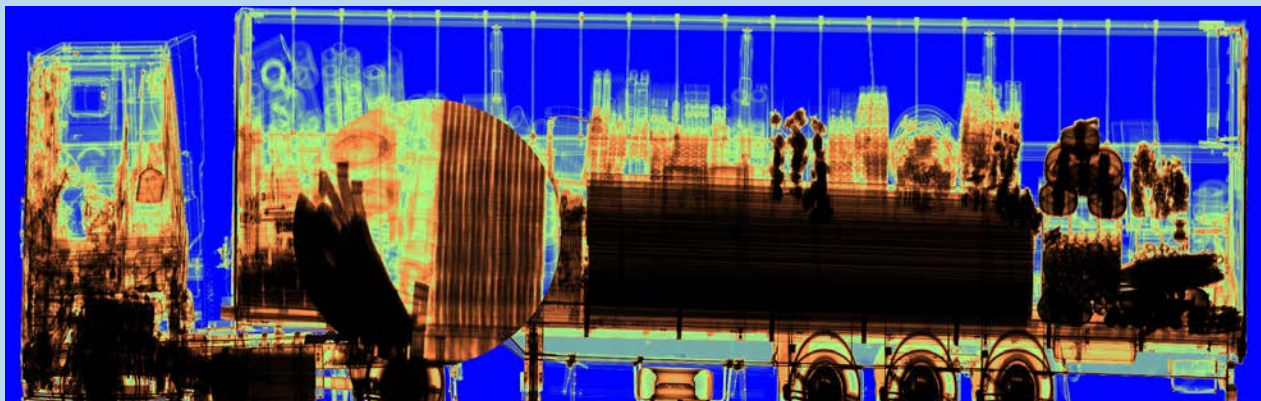
Weapons, Narcotics and IED's

An introduction to threat items that might be found in different types of cargo.

Training Labs

S2 Global image labs contain millions of "real-world" scans along with the matching manifest data on available shipments. After each image is analyzed, adjudication is selected and is documented at the completion of each lab in a visual report enabling the student to identify incorrect actions.





REAL WORLD IMAGES PROVIDE EXPERTISE BEYOND THE FUNDAMENTALS

Image Labs

To further develop the ability to detect anomalies such as drugs, weapons, currency and other contraband in various types of vehicles and containers, an Intermediate and Expert certification include increasingly difficult image labs to analyse.

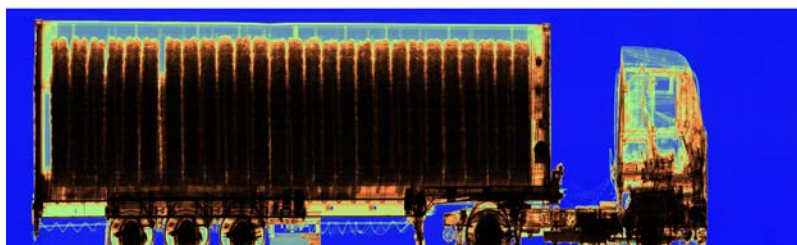
S2 University is capable of integrating images from your operation into our training so that your analysts can keep up with the latest issues.

Cargo Vehicles

Image labs include commercial conveyances and cargo shipments. Scan images reflect homogeneous cargo, empty conveyances and private vehicles clean of clutter and large dense areas. Contraband includes drugs, currency, weapons/ammunition, human trafficking, contraband cigarettes and manifest discrepancies.

Commercial Buses and Vans

Image labs include commercial buses and vans. Scan images reflect cargo/conveyance that is non-homogeneous, multiple vehicle cargo shipments, tankers and flatbed non-containerized cargo such as wood, steel, aluminium, etc. Private vehicle scans include images that contain, groceries, supplies, equipment, etc. that display clutter and shielding.



Private Vehicles

Image labs include a wide range of private vehicles. Scan images display complex densities, loading patterns, shielding of cargo/conveyance include loaded tankers, scrap metal, multiple vehicles, household effects, etc. Private vehicles display a wide range of densities and clutter which will require in depth analysis.

RESULTS & FEEDBACK

▲
116%

116% increase overall improvement on image lab evaluations after taking the course

99%

Customers found our course relevant

150+

Customer Satisfaction

98%

Over 150 years of US Customs and Border Protection and US Department of Defense field experience



THESE ARE **COMMENTS** FROM OUR **STUDENTS**

"The course was very informational especially for me since I have very little experience in Cargo environment."

"This is an excellent training when officers are certified for the first time in any NII equipment. Wish I had received this training early in my career."

"The S2 Global Team Instructors were excellent. They were very knowledgeable, and had a great dynamic. As a whole it was a very comfortable environment. Thank you for this opportunity."



COURSE SYNOPSIS

CONVEYANCE
EXAMINATION**SYLLABUS NUMBER:** CRS-001

The global economy heavily relies on international trade. Containers are the most widely used receptacle to transport commodities across oceans and borders. Due to the multiple entities that come in contact with, and have access to the containers, viable risks to the supply chain are inherent. Therefore, containers are often used to secrete contraband of all types. This course will enable you to determine if a container has been compromised in any fashion.

Upon completion of this course, you will be able to:

- Understand the structure of a container.
- Identify container alterations.
- Gain a systematic approach to container examinations and inspection techniques.
- Understand various types of common concealment methods.
- Understand security seal integrity and inspection methodology.

CARGO
INSPECTION**SYLLABUS NUMBER:** CRS-002

Merchandise shipped as cargo travels around the globe in a vast array of packaging. Depending on the smallest unit of measure for the commodity, the packaging may be handheld or so large that a forklift or crane is required to move it. Either way, no matter the commodity, there are ways the packaging or commodity itself, can be used to secrete illicit goods. This course will provide a concise look at inspection methods for commodities and/or their packaging.

The primary purpose of cargo inspection is to ensure compliance with laws, regulations, and trade agreements. Inspections may cover documentation, safety and security, packaging and labeling, and the contents of the cargo. Discovery of illicit goods, fraudulent manifestation, and other types of non-compliance may result in fines, seizures, or other penalties. Taking such measures strengthens security at borders and ports.

Upon completion of this course, you will be able to:

- Grasp the wide spectrum of cargo concealments
- Understand fundamental cargo inspection methods
- Learn inspection tips based on previous seizures



BOLO

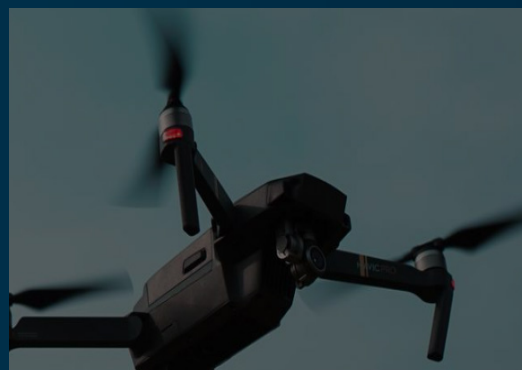
SYLLABUS NUMBER: CRS-003

In recent years, the global pandemic has promoted a major increase in drug use worldwide, fueling heightened smuggling attempts to meet the demand. The Russian invasion of Ukraine has forced millions of women and children to flee from the safety of their homes, exacerbating human trafficking and exploitative smuggling.

Now, more than ever is time to be vigilant. By observing various case studies around the world, we can keep up with the latest smuggling trends and adapt rapidly to the ever-evolving security threats. By always being on guard, we can better protect our borders.

Upon completion of this course, you will be able to:

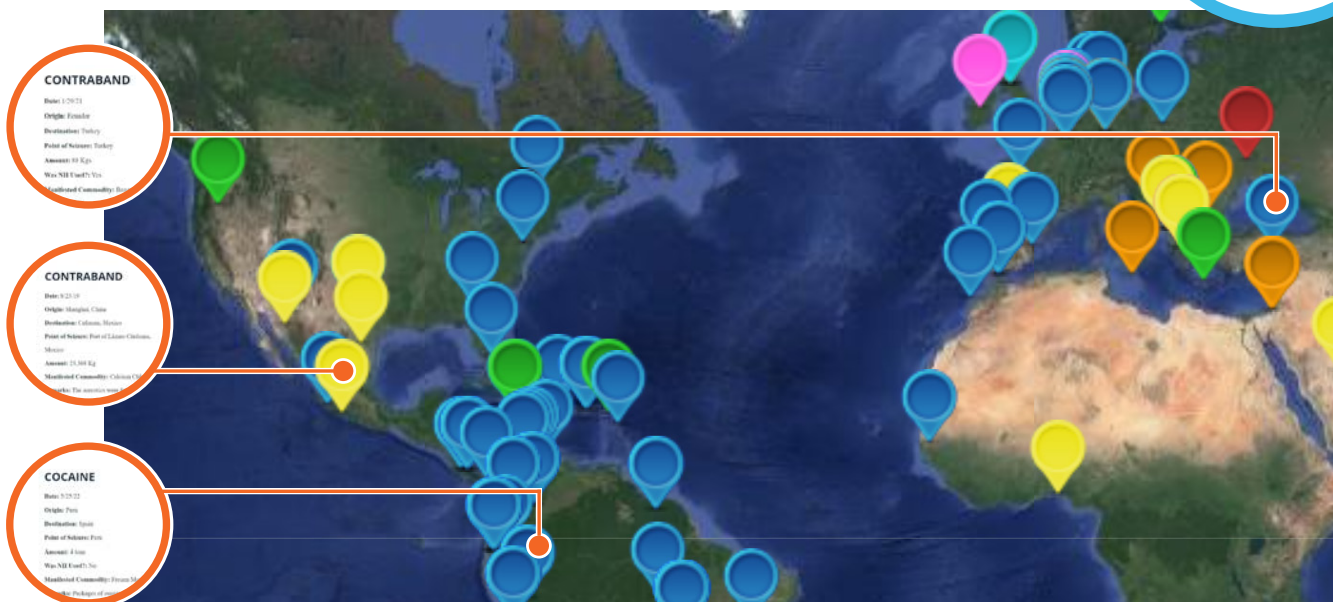
- Heighten exposure to a wide range of global contraband seizures
- Simulate various scenarios of cargo shipments and conveyances
- Increase awareness over recent smuggling trends and practices
- Enhance analysis with customized tips from professional SME's



SMUGGLING TRENDS

The Smuggling Trends Report tracks recent seizures of smuggled drugs, weapons, currency, humans, cigarettes and more from around the globe. The report keeps you informed with videos and articles from customs, police and border forces. Share the report with your colleagues to keep your entire organization up to date with smuggling techniques from air, sea and land ports.

<p>Cocaine</p> <p>Date: 1/12/19 Origin: Ecuador Destination: Greece Point of Seizure: Ecuador Amount: 170 kgs Manifested Commodity: Fish Remarks: Cocaine was secreted in a false floor of a refrigerated container http://www.ekathimerini.com/236283/article/ekathimerini/news/cod-and-cocaine</p>	<p>Cocaine</p> <p>Date: 4/2/19 Origin: Mexico Destination: Canada Point of Seizure: Port of Montreal, Canada Amount: 100 kgs Manifested Commodity: Furniture Remarks: Cocaine was found hidden inside furniture http://www.rcmp-gre.gc.ca/en/news/2019/seizure-roughly-100-kilos-cocaine-the-port-montreal</p>	<p>Cocaine</p> <p>Date: 5/27/22 Origin: Brazil Destination: United Kingdom Point of Seizure: Brazil Amount: 346 kgs Was NII Used?: No Manifested Commodity: Bulk Iron Ore Remarks: Packages of cocaine were found concealed in a bulk shipment of iron ore in a container. https://globoplay.globo.com/v/10616647/</p>
<p>Cocaine</p> <p>Date: 4/22/22 Origin: Peru Destination: Netherlands Point of Seizure: Peru Amount: 1,049 kgs Was NII Used?: No Manifested Commodity: Gas Cylinders Remarks: Customs found cocaine packages inside a shipment of propane gas cylinders. https://larepublica.pe/sociedad/2022/04/22/cusco-incantun-mas-de-mil-kilos-de-cocaína-camflada-en-balones-de-gas/</p>	<p>Cocaine</p> <p>Date: 4/25/22 Origin: Dominican Republic Destination: Canada Point of Seizure: Dominican Republic Amount: 180 packets weight unknown Was NII Used?: No Manifested Commodity: Coffee Remarks: Cocaine was comingled in bags of coffee. https://dncl.gob.do/index.php/noticias/noticias/item/1309-incantun-otros-180-paquetes-presumiblemente-cocaína-en-puerto-caucedo</p>	<p>Cocaine</p> <p>Date: 5/27/22 Origin: Unknown Destination: Poland Point of Seizure: Poland Amount: 50 kgs Was NII Used?: No Manifested Commodity: Synthetic Rubber Remarks: Packages of cocaine were found hidden behind the wall of a shipping container. https://www.gov.pl/web/kas-kas-udaremla-przemyt-50-kg-kokainy</p>
<p>Contraband</p> <p>Date: 8/19/19 Origin: South America Destination: Unknown Point of Seizure: Penang, Malaysia Amount: 12 Tons Manifested Commodity: Coal Remarks: The narcotics were found hidden inside large sacks of coal https://www.thestar.com.my/news/nation/2019/09/20/country039s-biggest-drug-bust-12-tonnes-of-cocaine-worth-rm24bl-seized-in-</p>	<p>Cocaine</p> <p>Date: 5/25/22 Origin: Peru Destination: Spain Point of Seizure: Peru Amount: 4 tons Was NII Used?: No Manifested Commodity: Frozen Mango Pulp Remarks: Packages of cocaine were comingled inside boxes of frozen mango pulp. https://www.youtube.com/watch?v=s1K9qA3uk0c</p>	<p>Contraband</p> <p>Date: 8/25/19 Origin: Shanghai, China Destination: Culiacan, Mexico Point of Seizure: Port of Lázaro Cárdenas, Mexico Amount: 23,368 Kg Manifested Commodity: Calcium Chloride Remarks: The narcotics were found inside bags of manifested chemicals https://hermapolis.com.mx/detallenota.php?idn=35113</p>





Expert Developed Training

With over 150 years of US Customs and Border Protection and Department of Defense field experience and our development team with extensive educational and instructional design background brings forth a wealth of knowledge for today's security professional.

With our unique learning management system at www.S2University.com students are able to gain extensive knowledge from media-rich, tailored courses.

S2 Global has the capability to develop courses specific to the security needs of your organization or agency.

Contact us to discuss your next security training program.

Gary Heffner

Director, Training S2 Global

GHeffner@screeningsolution.com

www.S2University.com

S2 Global, an OSI Systems company, is a world class leader in detection system implementation, integration, training, staffing and maintenance. Our dedication and experience has resulted in a suite of systems, knowledge and experienced personnel available on-demand for clients of all sizes.

S2 University provides real world training for organizations and governments responsible for security and safety delivered on a user-friendly platform in person or online.

WORLDWIDE CONTACTS

Global Headquarters
1800 Eller Drive
Ft. Lauderdale, Florida 33316
United States of America
Tel: +1 954-779-7102

WEB
www.screeningsolution.com
www.S2University.com

