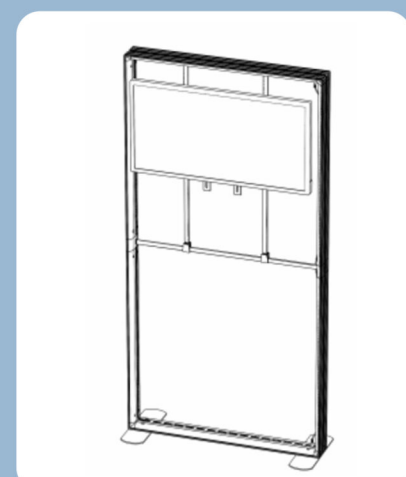
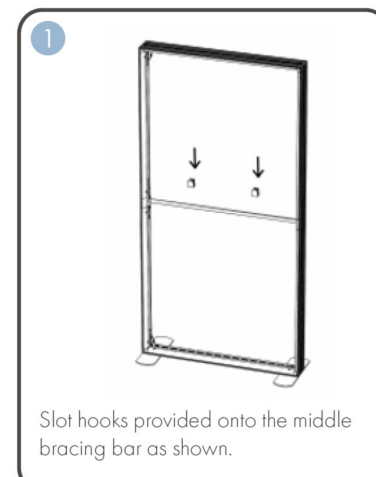


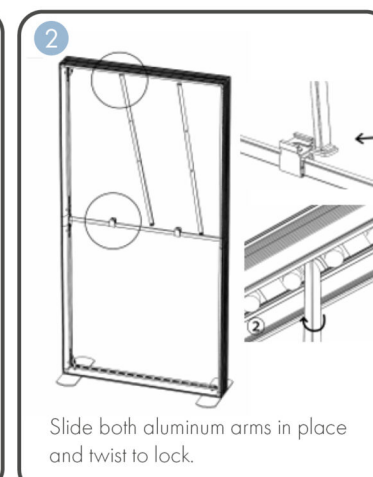
LumaLight GO
TV Bracket Mount



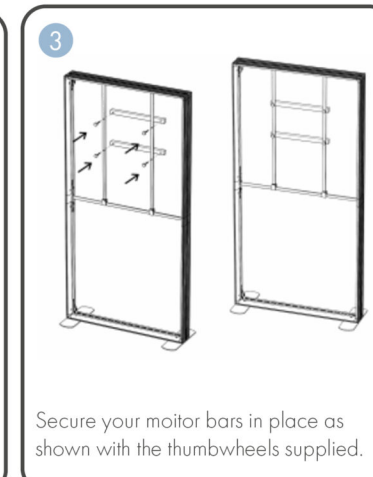
ASSEMBLY STEPS



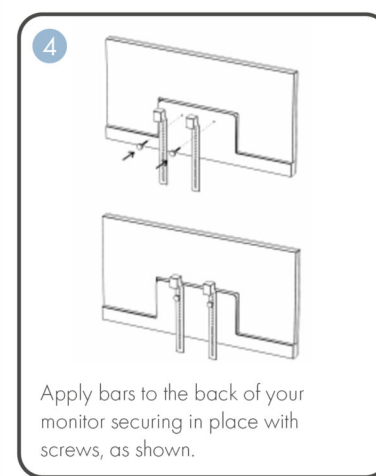
Slot hooks provided onto the middle bracing bar as shown.



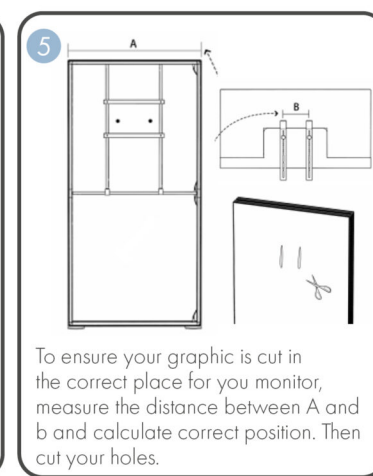
Slide both aluminum arms in place and twist to lock.



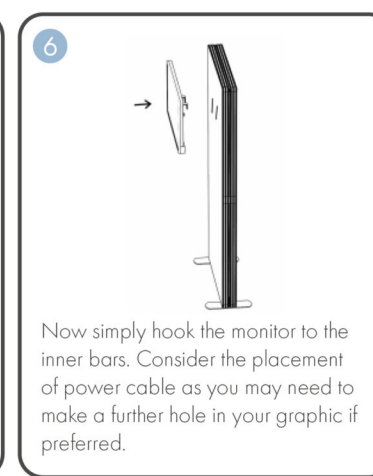
Secure your monitor bars in place as shown with the thumbwheels supplied.



Apply bars to the back of your monitor securing in place with screws, as shown.



To ensure your graphic is cut in the correct place for you monitor, measure the distance between A and B and calculate correct position. Then cut your holes.



Now simply hook the monitor to the inner bars. Consider the placement of power cable as you may need to make a further hole in your graphic; if preferred.