

OCEAN*LUX*

| sea



Length: 41.90m / 137.47ft

Guests: 10

Cabins: 5

Crew: 9

FEATURES

- Stunning exterior & interior styling.
- Owner's suite located on the upper deck featuring a private balcony.
- Multipurpose salon available on the lower deck.
- Jacuzzi and bar available on the sundeck.
- Variety of water toys available for use.
- Comes with Joker Clubman luxury chase boat.
- Well-appointed interiors with luxurious finishes and furnishings.
- Large sundeck area with Jacuzzi.
- Impressive exterior lounging areas.
- Outdoor bar and dining table located on the main deck aft.

CABINS DISTRIBUTION

1 MASTER	1 VIP	1 DOUBLE	2 TWIN
-------------	----------	-------------	-----------

PRICE BY SEASON

Summer
From: \$139,000 /week + expenses

Winter
From: \$139,000 /week + expenses

SPECIFICATIONS

Length: 41.90m / 137.47ft

Beam: 7.90m / 25.92ft

Draft: 1.90m / 6.23ft

Cruise speed: 12 knots

Max speed: 18 knots

Built: 2014 · 2014 (Refitted)

Builder: Palmer Johnson

Exterior design: Palmer Johnson

Interior design: Palmer Johnson





DESCRIPTION

The 'I Sea', a motor yacht measuring 41.9m/137'6" and built by the American shipyard Palmer Johnson, can accommodate up to 10 guests in 5 cabins and has interiors designed by American designer Palmer Johnson. This yacht is perfect for luxury charters with family or friends, providing numerous spaces for relaxation and enjoyment of water activities with an array of water toys available.

The guest accommodation on the 'I Sea' is ideal for families due to its child-friendly setup. The yacht was built in 2014 and has a layout consisting of a master suite, one VIP cabin, one double cabin, and two twin cabins. In total, there are 9 beds, including 1 king, 2 doubles, 4 singles, and 2 pullmans. Additionally, the yacht can accommodate up to 9 crew members to ensure a comfortable and stress-free charter experience.

Onboard, guests can enjoy several amenities and experiences, such as a deck jacuzzi to admire the scenery while sipping a drink. The 'I Sea' is also equipped with Wi-Fi connectivity, providing constant internet access, and air conditioning, ensuring complete comfort while onboard.

With a semi-displacement hull and powered by twin Detroit Diesel engines, the yacht can reach a maximum speed of 18 knots, comfortably cruising at 14 knots, and has a range of up to 1,800 nautical miles. The yacht's shallow draft of 1.9m/6'3" allows it to anchor closer to coves and sheltered bays overnight, and its advanced stabilization system reduces the side-to-side roll, promising exceptional comfort levels for guests when anchored or underway.

The 'I Sea' also features a vast selection of water toys and accessories, including a waterslide, jet skis, water skis, a seabob, fishing equipment, scuba diving equipment, snorkeling equipment, and a Williams Tender for easy land-to-sea transportation.

All-year-round, the 'I Sea' is based in the enchanting waters of the Mediterranean and is the perfect luxury yacht charter for discovering the region's magical places, food, and experiences. This yacht is a unique experience offering world-class onboard amenities and the latest water sports gear for unforgettable yacht charters, wherever you are.

AMENITIES

- Jacuzzi
- Deck Jacuzzi
- Stabilizers Underway
- Air Conditioning
- Wifi
- At-Anchor Stabilizers

TOYS

- 1 x Water slide
- 1 x Anti jellyfish pool
- 3 x Towable Toys
- 2 x Jet Skis
- 2 x Seabobs
- Water Ski
- Snorkeling Equipment
- Fishing Equipment
- Diving equipment
- 1 x Tender

For full list of available amenities & toys or price to hire additional equipment please contact us





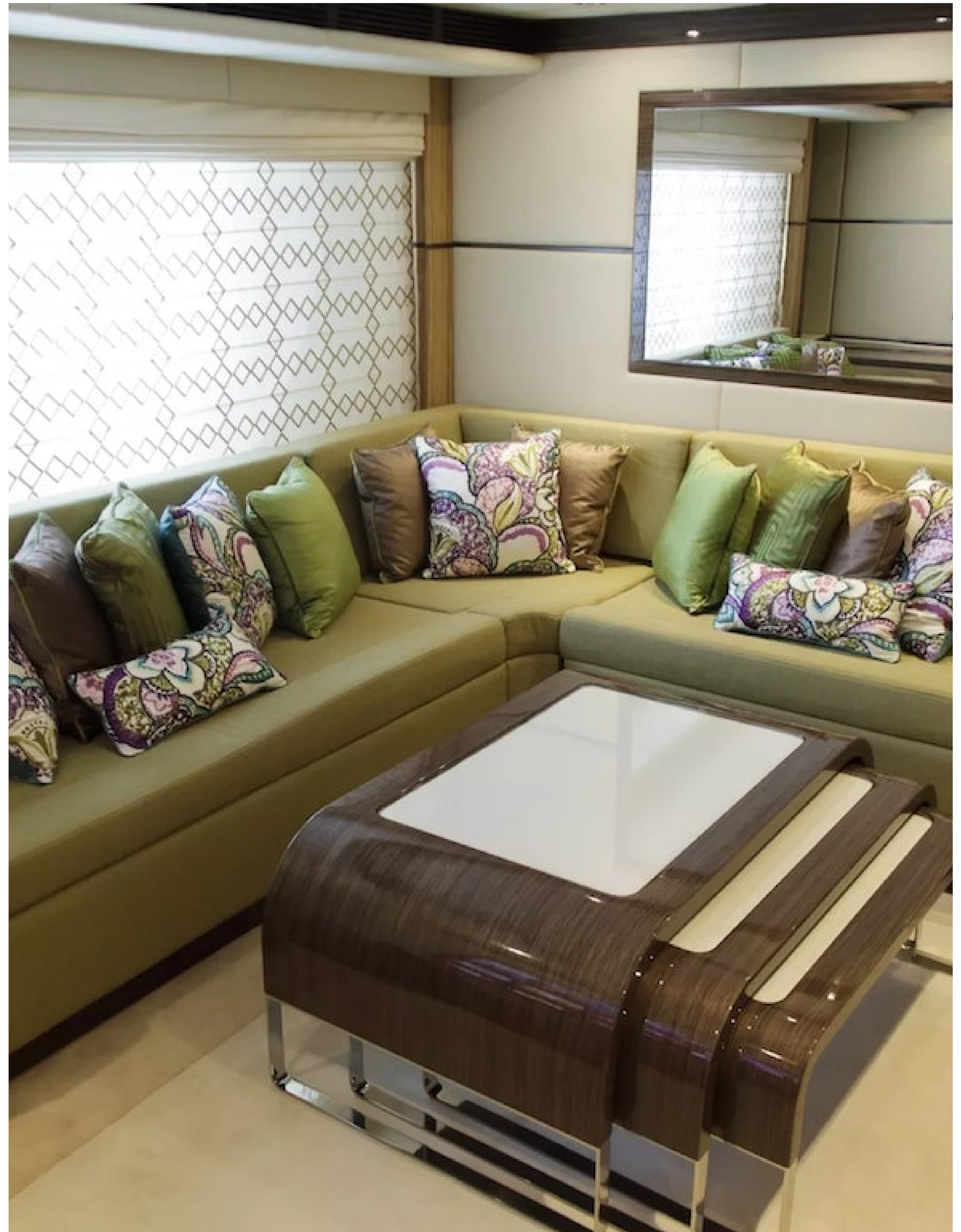
















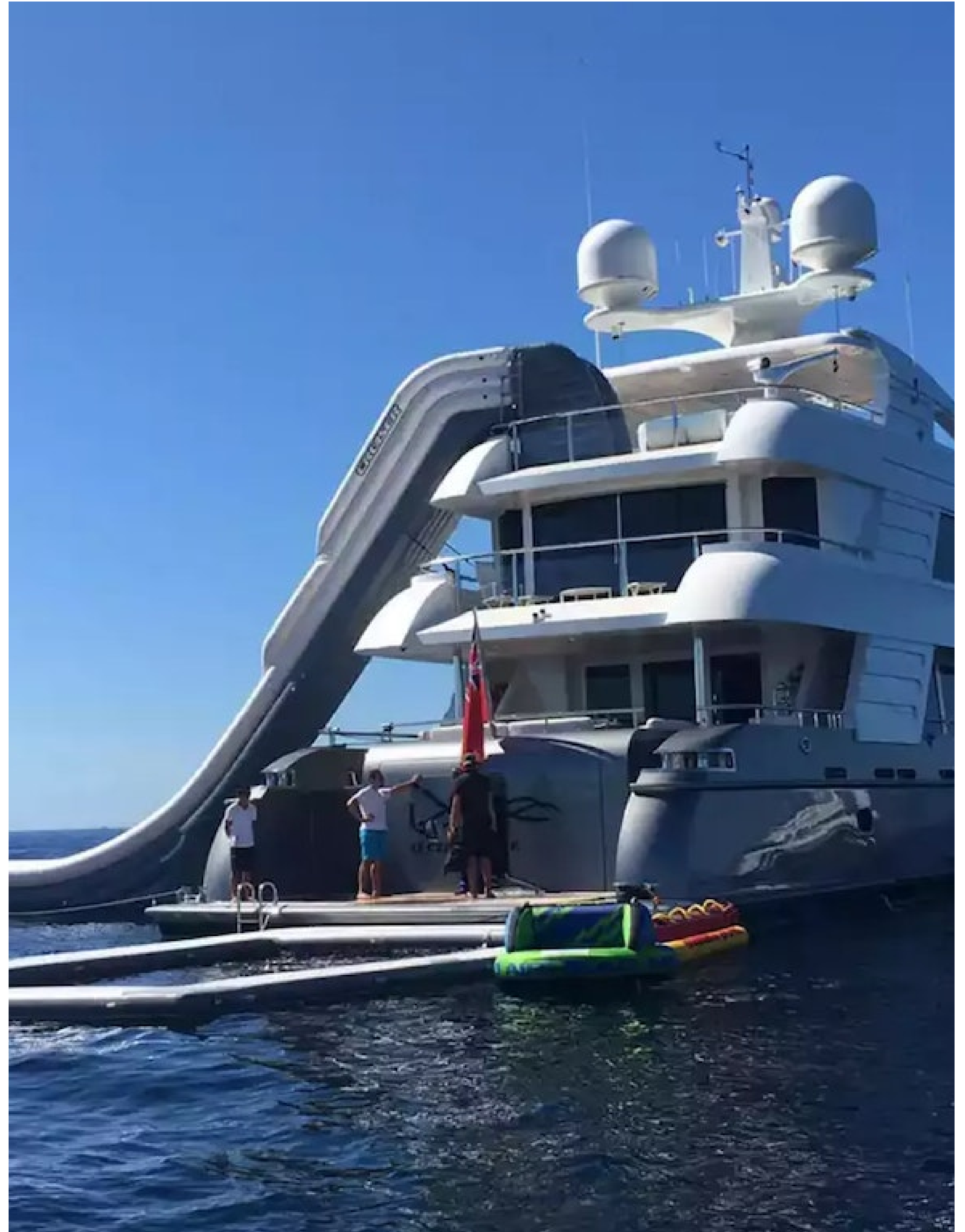












OCEAN*LUX*

Floating expression of *YOU*

www.oceanluxyachts.com

Fort Lauderdale

+1 954 836 9057

Miami

+1 305 686 7051

New York

+1 332 455 0928

Los Angeles

+1 323 986 5808

London

+44 203 962 116

Sydney

+61 272 541 584

Paris

+33 532 63 01 52

Barcelona

+34 931 768 849

Geneva

+41 225 01 74 96

Athens

+30 211 2347975

Moscow

+7 921 8656779