

OCEANLUX

Diane



Length: 43.00m / 141.08ft

Guests: 10

Cabins: 5

FEATURES

- ▶ Extensively refreshed in 2019
- ▶ Spacious interior
- ▶ Proven charter record
- ▶ Zuretti interior design
- ▶ Zero speed stabilizers
- ▶ Balearics license
- ▶ Eight crew
- ▶ Beautifully presented with timeless interior styling
- ▶ Gym equipment and RYA training center for watersports
- ▶ Voluminous decks offering an array of amenities
- ▶ Wonderful decks for dining and sunbathing
- ▶ Well-suited to family charters with spacious fold-down beach club and four dining areas
- ▶ Sundeck Jacuzzi and BBQ
- ▶ Great selection of water toys, beach club, and bar for alfresco dining.

CABINS DISTRIBUTION

1 MASTER	1 VIP	1 DOUBLE	2 TWIN
-------------	----------	-------------	-----------

PRICE

From: \$11,412,000

SPECIFICATIONS

Length: 43.00m / 141.08ft

Beam: 8.90m / 29.20ft

Draft: 2.10m / 6.89ft

Cruise speed: 14 knots

Max speed: 20 knots

Built: 2007 · 2019 (Refitted)

Builder: Benetti

Exterior design: Stefano Natucci

Interior design: Zuretti



Diane

OCEANLUX



DESCRIPTION

Diane is a 43m/141'1" motor yacht built by the Italian shipyard Benetti in 2007. It offers flexible accommodation for up to 10 guests in 5 cabins and features interior styling by French designer Zuretti. The yacht has a child-friendly setup, making it suitable for families. It has a master suite located on the main deck, one VIP cabin, one double cabin and two twin cabins, providing a total of 8 beds including 1 king, 2 queen, 4 singles, and 1 pullman. Diane is also capable of carrying up to 8 crew onboard to ensure a relaxed luxury yacht charter experience.

The yacht offers several features for onboard comfort and entertainment, including a gym with all the latest equipment, a deck jacuzzi, and Wi-Fi connectivity, allowing guests to stay connected at all times. The yacht also has air conditioning to ensure guests' comfort regardless of the weather.

Diane is built with an aluminum hull and aluminum superstructure and has a semi-displacement hull, which provides exceptional seakeeping and impressive speeds. The yacht is powered by twin MTU engines and can comfortably cruise at 12 knots, reach a maximum speed of 20 knots, and has a range of up to 3,500 nautical miles from its 58,000 liter fuel tanks. With a low draft of 2.1m/6'11", Diane is ideal for accessing shallow areas and cruising close to the shorelines. The yacht also has an advanced stabilization system that reduces its side-to-side roll and ensures exceptional comfort levels for guests at anchor or when underway.

When not cruising, Diane has onboard an incredible selection of water toys and accessories for guests to connect with the waters around them. These include Jet Skis, towable toys, waterskis, wakeboards, kayaks, inflatable water toys, paddleboards, and snorkeling equipment. The yacht also has two tenders, including a 6m/19'8" Novurania Tender.

With its luxurious styling and superb amenities, Diane offers the perfect platform for guests to enjoy their next luxury yacht charter vacation. The yacht is available for charter during both winter and summer cruising seasons, and details on its cruising grounds and availability can be obtained through an enquiry.

AMENITIES

Jacuzzi Deck Jacuzzi Stabilizers Underway Gym Wifi Air Conditioning
At-Anchor Stabilizers























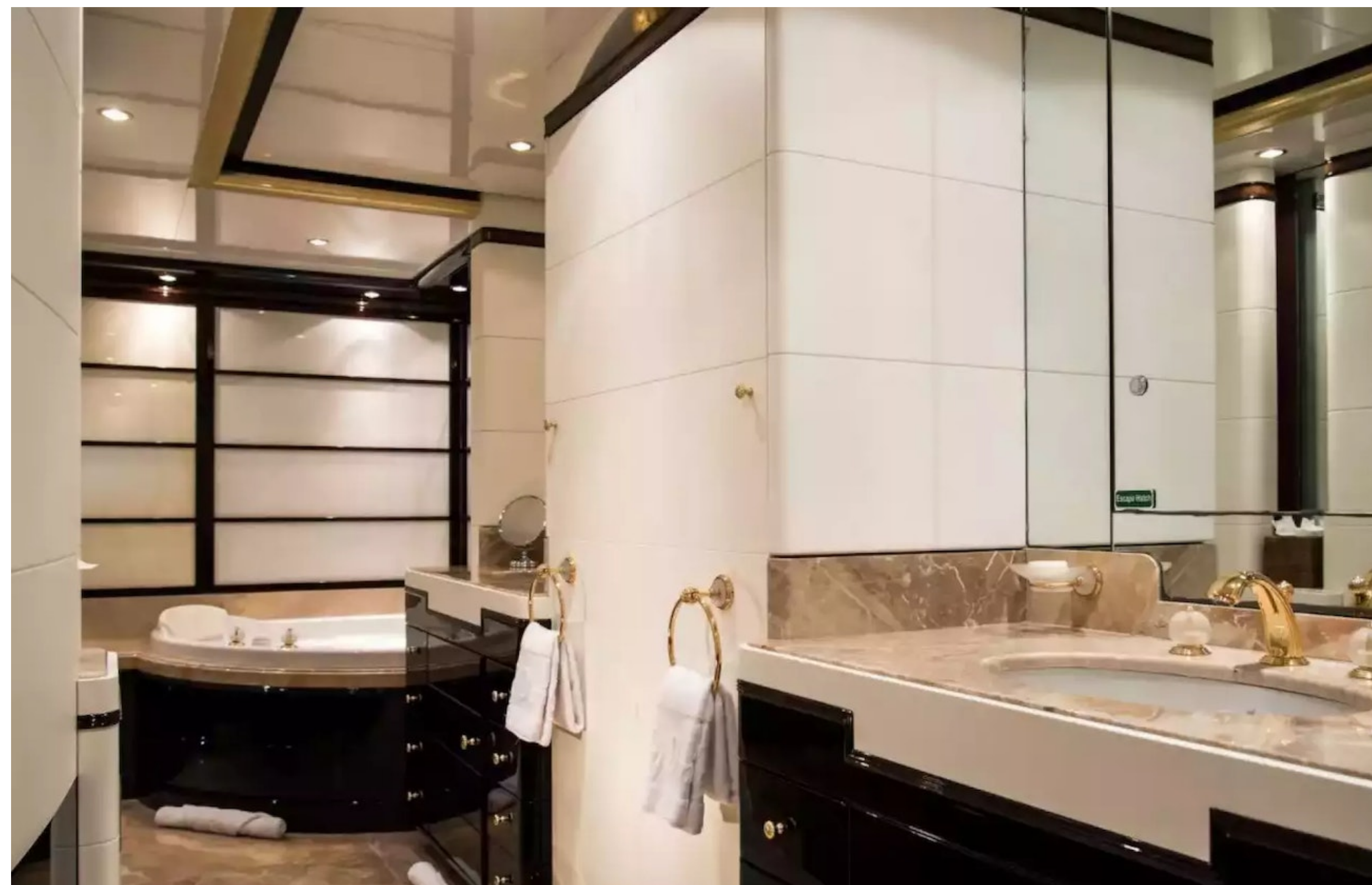


















OCEANLUX

Floating expression of *YOU*

www.oceanluxyachts.com

Fort Lauderdale
+1 954 836 9057

Miami
+1 305 686 7051

New York
+1 332 455 0928

Los Angeles
+1 323 986 5808

London
+44 203 962 116

Sydney
+61 272 541 584

Paris
+33 532 63 0152

Barcelona
+34 931 768 849

Geneva
+41 225 01 74 96

Athens
+30 211 2347975

Moscow
+7 921 8656779