

OCEAN*LUX*

# Elements



Length: 80.00m / 262.47ft

Guests: 12

Cabins: 12

Crew: 25

FEATURES

- Built to Lloyds and SOLAS unrestricted navigation.
- 2019 delivery.
- Sublime accommodation in 12 en-suite cabins.
- Accommodation for up to 24 guests.
- Suitable for private and commercial operation.
- 18 knots top speed.
- Foredeck Helipad.
- 8.4m Limousine tender.
- Medical suite.
- Extensive collection of water toys.
- Perfect platform for large charter groups.
- Generous exterior decks ideal for entertaining and lounging.
- Sophisticated interior.
- Spacious spa area & Turkish bath.
- Large, soundproof cinema with a range of movies.
- SOLAS compliant for up to 24 guests on charter.

CABINS DISTRIBUTION

1 MASTER	1 VIP	5 DOUBLE	5 TWIN
-------------	----------	-------------	-----------

PRICE BY SEASON

Summer  
From: \$891,000 /week + expenses

Winter  
From: \$891,000 /week + expenses



## SPECIFICATIONS

Length: 80.00m / 262.47ft

Beam: 12.80m / 41.99ft

Draft: 3.80m / 12.47ft

Cruise speed: 15 knots

Max speed: 20 knots

Built: 2019

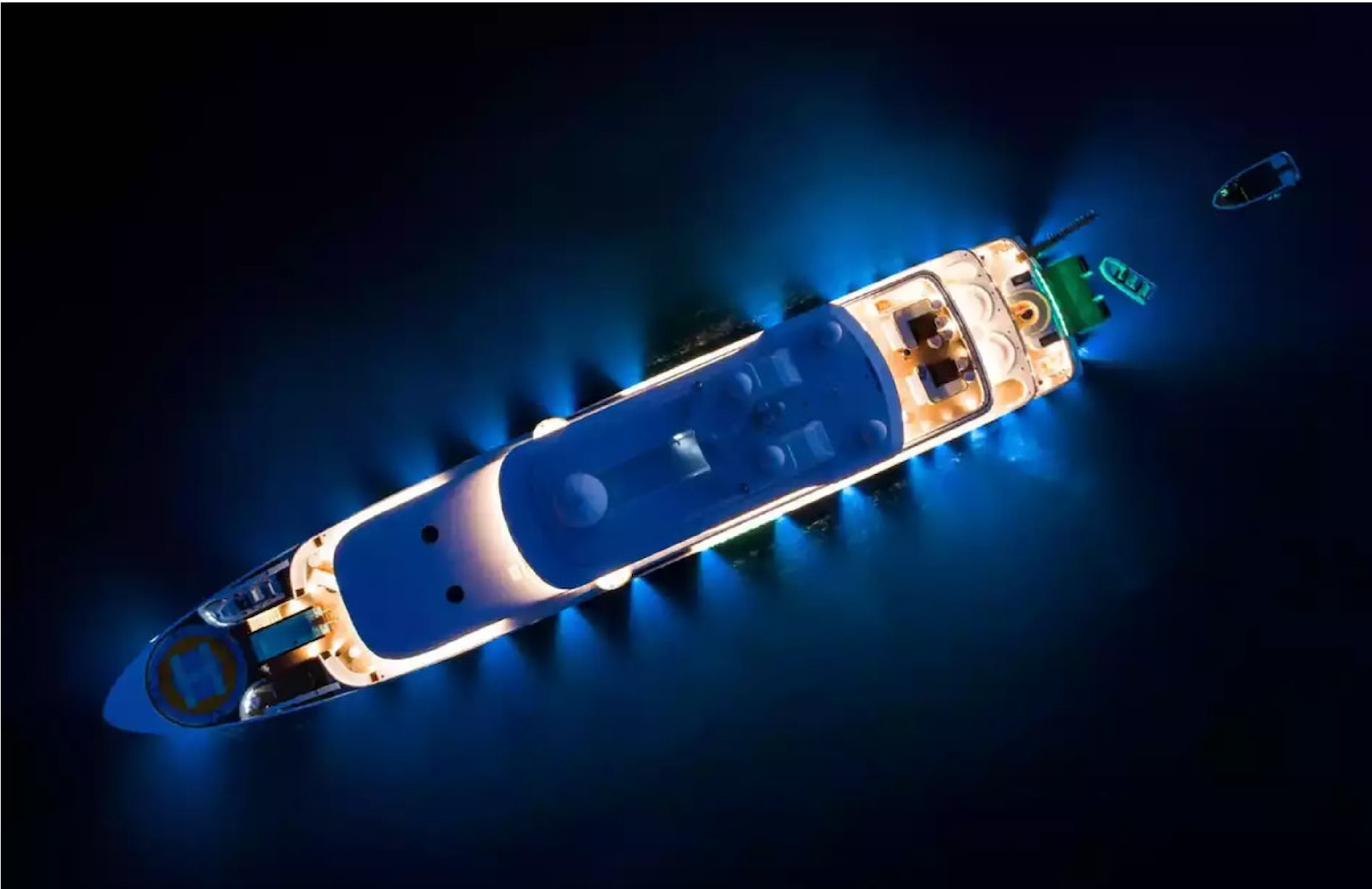
Builder: Yachtley

Exterior design: Alpha Marine

Interior design: Cristiano Gatto Design









DESCRIPTION

The 80m (263ft) superyacht ELEMENTS was built by Yachtley in 2018 and features impressive exterior styling by Alpha Marine and interior design by Cristiano Gatto Design. She can accommodate up to 24 guests across 12 staterooms, including a master suite that can be converted into a family apartment with its own Jacuzzi, bar, cinema, and office. The yacht also features 5 double cabins and 5 twin cabins, with space for up to 25 crew members.

Guests can enjoy a wide range of entertainment options, including a beach club with a hammam and massage room, a movie theater, beauty room, steam room, sauna, pool, gym, and deck jacuzzi. The yacht is wheelchair-friendly and equipped with an elevator and helipad, as well as Wi-Fi connectivity and air conditioning.

Powered by twin MTU engines, ELEMENTS can reach a maximum speed of 18 knots and has a range of up to 10,000 nautical miles. She also features an advanced stabilization system to reduce side-to-side roll and enhance guest comfort. When not cruising, the yacht has an incredible selection of water toys, including flyboards, waterslides, jet skis, waverunners, towable toys, scuba diving equipment, and a seabob, as well as two tenders.

ELEMENTS is available for charter in Bermuda, the Caribbean, and the Mediterranean, offering luxurious and unforgettable vacations for families and friends.

AMENITIES

Jacuzzi	Stabilizers Underway	Wifi	Movie Theatre	Beach Club	
Wheelchair Accessible		Tender Garage	Sunpads	At-Anchor Stabilizers	Sauna
Elevator	Satellite TV	Swimming platform	Sun Deck	Swimming Pool	Gym
Steam Room	Underwater Lights	Commercial Helipad		Deck Jacuzzi	
Beauty Room	Air Conditioning				

TOYS

Water Skis	Knee board	Wakeboards	6 x Paddleboards	Flyboard	5 x Jet Skis
Windsurf	Flyboard	Inflatable toys	Towable Toys	Snorkeling Equipment	
6 x Diving equipment		Dive compressor	Waterslide	2 x Seabobs	2 x Kayaks
Anti jellyfish pool	Fishing Equipment	1 x VIP Limousine Tender		2 x Tenders	

For full list of available amenities & toys or price to hire additional equipment please contact us





















































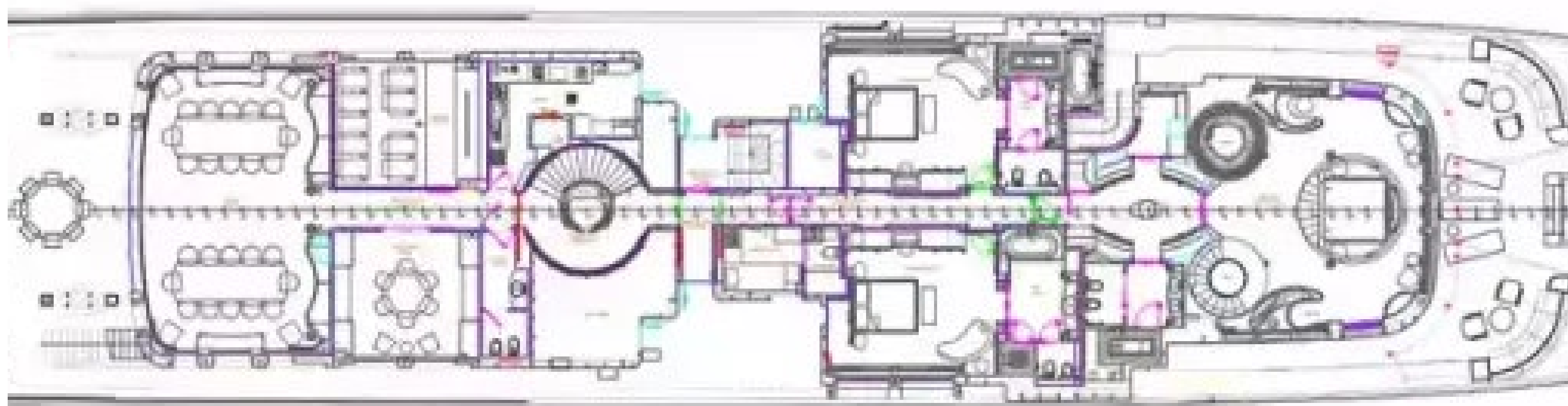
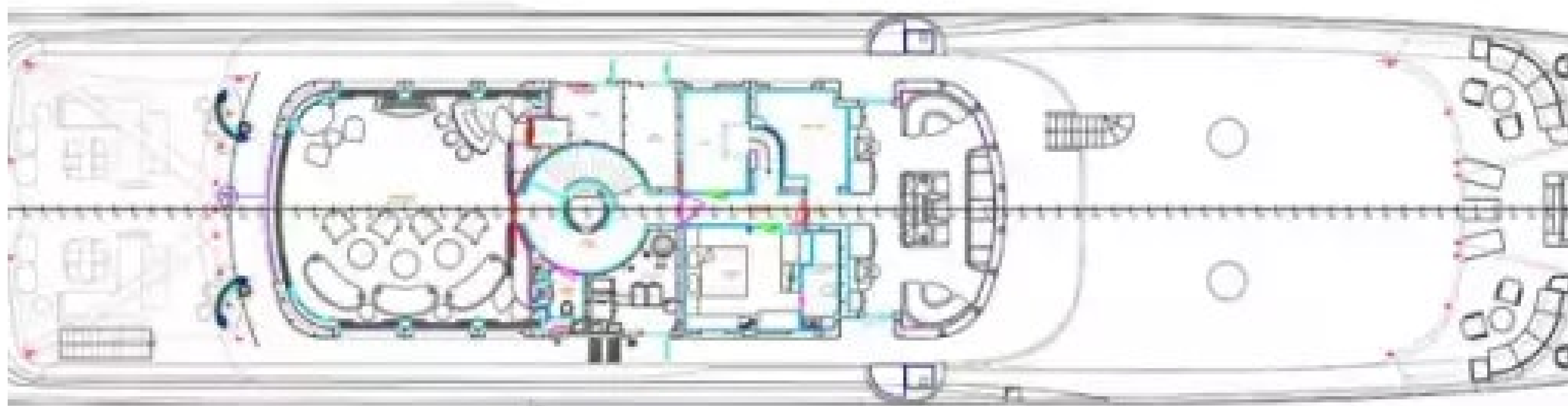
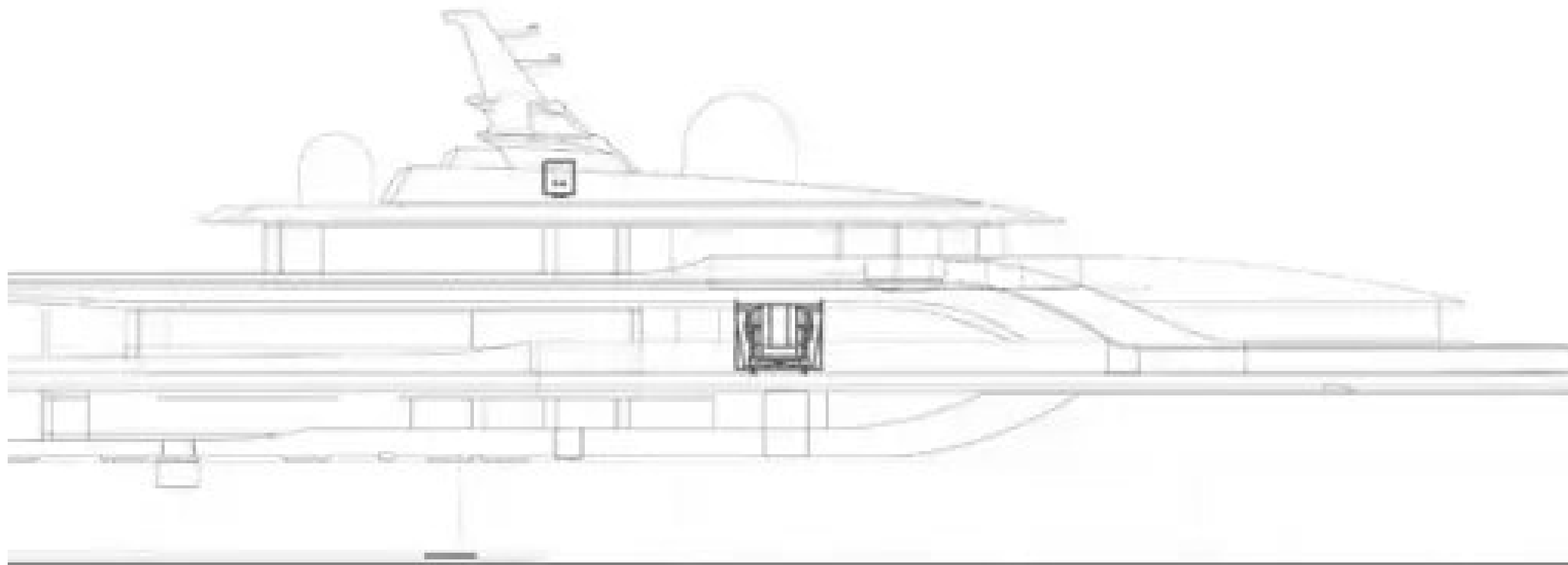














# OCEAN*LUX*

Floating expression of *YOU*

---

[www.oceanluxyachts.com](http://www.oceanluxyachts.com)

---

Fort Lauderdale

+1 954 836 9057

Miami

+1 305 686 7051

New York

+1 332 455 0928

Los Angeles

+1 323 986 5808

London

+44 203 962 116

Sydney

+61 272 541 584

Paris

+33 532 63 01 52

Barcelona

+34 931 768 849

Geneva

+41 225 01 74 96

Athens

+30 211 2347975

Moscow

+7 921 8656779