

OCEAN*LUX*

Khalilah



Length: 49.50m / 162.40ft

Guests: 11

Cabins: 5

FEATURES

- 110sq.m aft deck with outside banquette and sun pads.
- Two star Michelin trained Chef.
- Large beach club.
- Maximum speed of 26 knots.
- Eye-catching sporty lines.
- Newly enlarged swim platform in 2020.
- New zero speed stabilisers in 2020.
- Will accept dogs under 15kg.
- Cool, funky, fun interior.
- Innovative glazing.
- Jacuzzi and sunning station on bow.
- Pearlescent golden finish.
- Great socialising and relaxation areas.
- Main deck galley and master suite.
- Fabulous accommodation.
- 'Matching' tender.

CABINS DISTRIBUTION

| | | | |
|-------------|----------|-------------|-----------|
| 2 MASTER | 1 VIP | 1 DOUBLE | 1 TWIN |
|-------------|----------|-------------|-----------|

PRICE

From: \$31,730,000

SPECIFICATIONS

Length: 49.50m / 162.40ft

Beam: 11.00m / 36.09ft

Draft: 2.10m / 6.89ft

Cruise speed: 19 knots

Max speed: 26 knots

Built: 2015

Builder: Palmer Johnson

Exterior design: Palmer Johnson

Interior design: Palmer Johnson, Owner





DESCRIPTION

Palmer Johnson's American shipyard has made available for charter the motor yacht Khalilah, which measures 48m/157'6". This luxury yacht is designed for up to 11 guests in 5 cabins and has an interior styling by American designer Palmer Johnson. Khalilah's sumptuous living areas are laid out invitingly to create a warm and welcoming atmosphere for friends and family. This yacht is also child-friendly and equipped with a beach club and underwater lights.

The guest accommodation comprises a master suite, one VIP cabin, one double cabin, and one twin cabin, with a total of 7 beds, including 2 king, 2 doubles, 2 singles, and 1 pullman. Additionally, Khalilah can carry up to 9 crew onboard to ensure a relaxed luxury yacht charter experience. The yacht also features a deck jacuzzi and Wi-Fi connectivity, making it suitable for work, social media, or streaming movies on board. The air conditioning ensures comfort in any weather conditions.

Khalilah's carbon fibre hull and carbon fibre superstructure are powered by twin MTU engines, allowing her to cruise at 28 knots and reach a maximum speed of 30 knots with a range of up to 1,500 nautical miles from her 40,000-litre fuel tanks at 24 knots. With a low draft of 2.1m/6'11", this yacht is ideal for accessing shallow areas and cruising close to the shorelines.

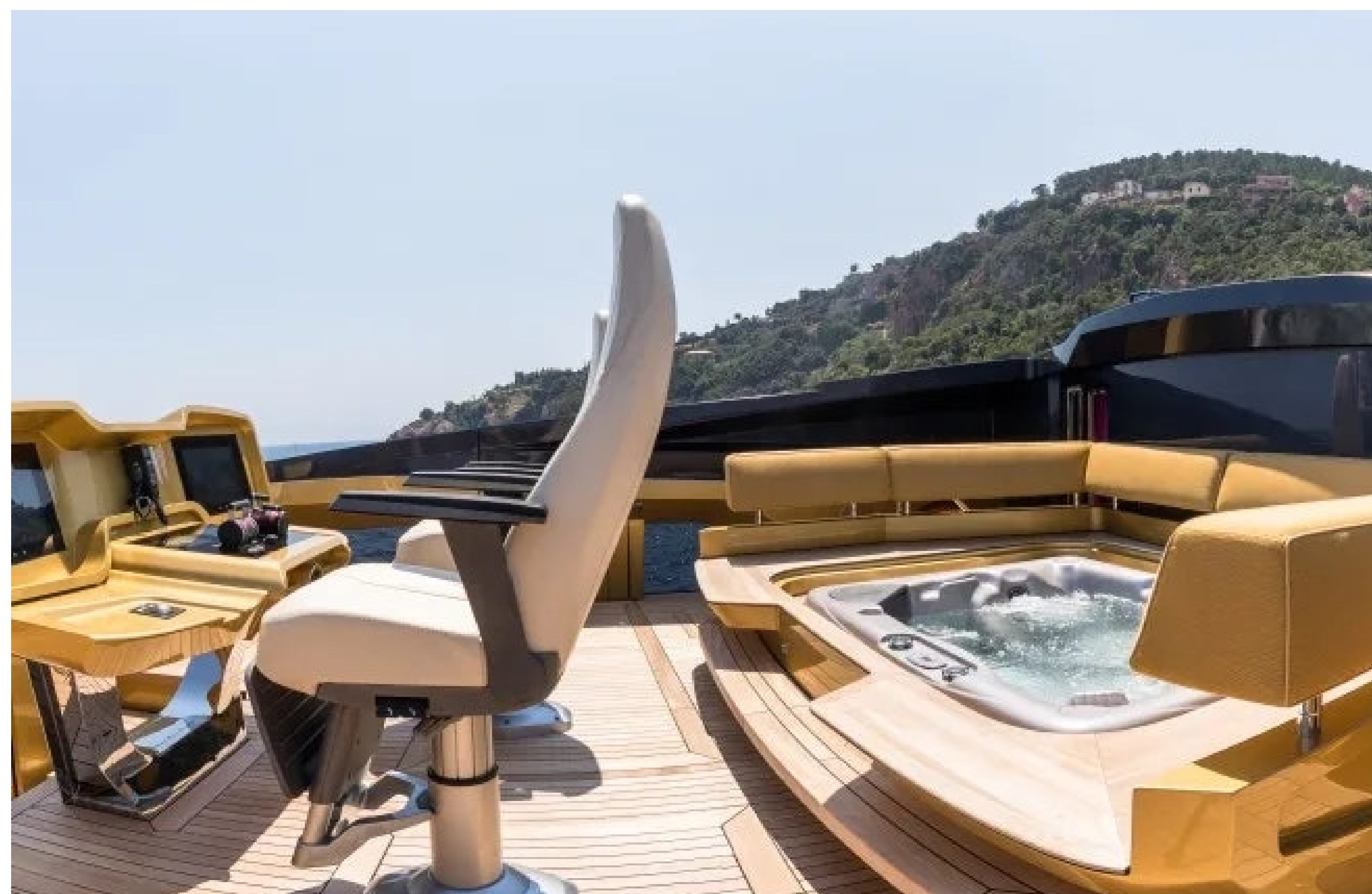
Khalilah is also equipped with an extensive selection of water toys, including a Jet Ski, three towable toys, waterskis, a Kite Surfer, scuba diving equipment, wakeboards, kayaks, fishing equipment, and two tenders, including a 6.85m/22'6" Custom Tender. This luxury yacht is available for charter this winter and is already accepting bookings for cruising in the Mediterranean this summer. Khalilah is the perfect choice for unforgettable yacht charters with world-class onboard amenities and the latest water sports gear.

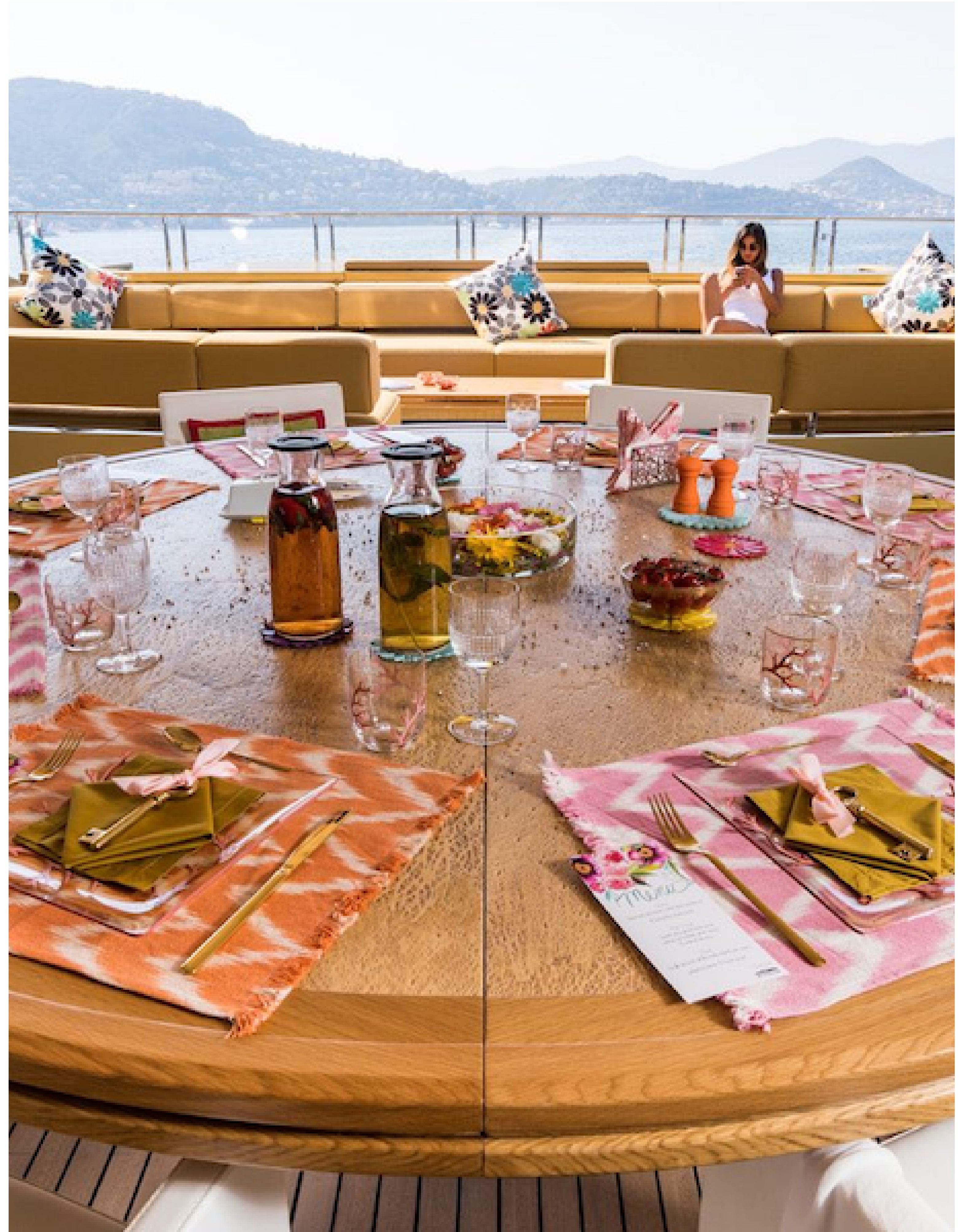
AMENITIES

- Jacuzzi
- Wifi
- Tender Garage
- Deck Jacuzzi
- Swimming platform
- Beach Club
- Underwater Lights
- Air Conditioning















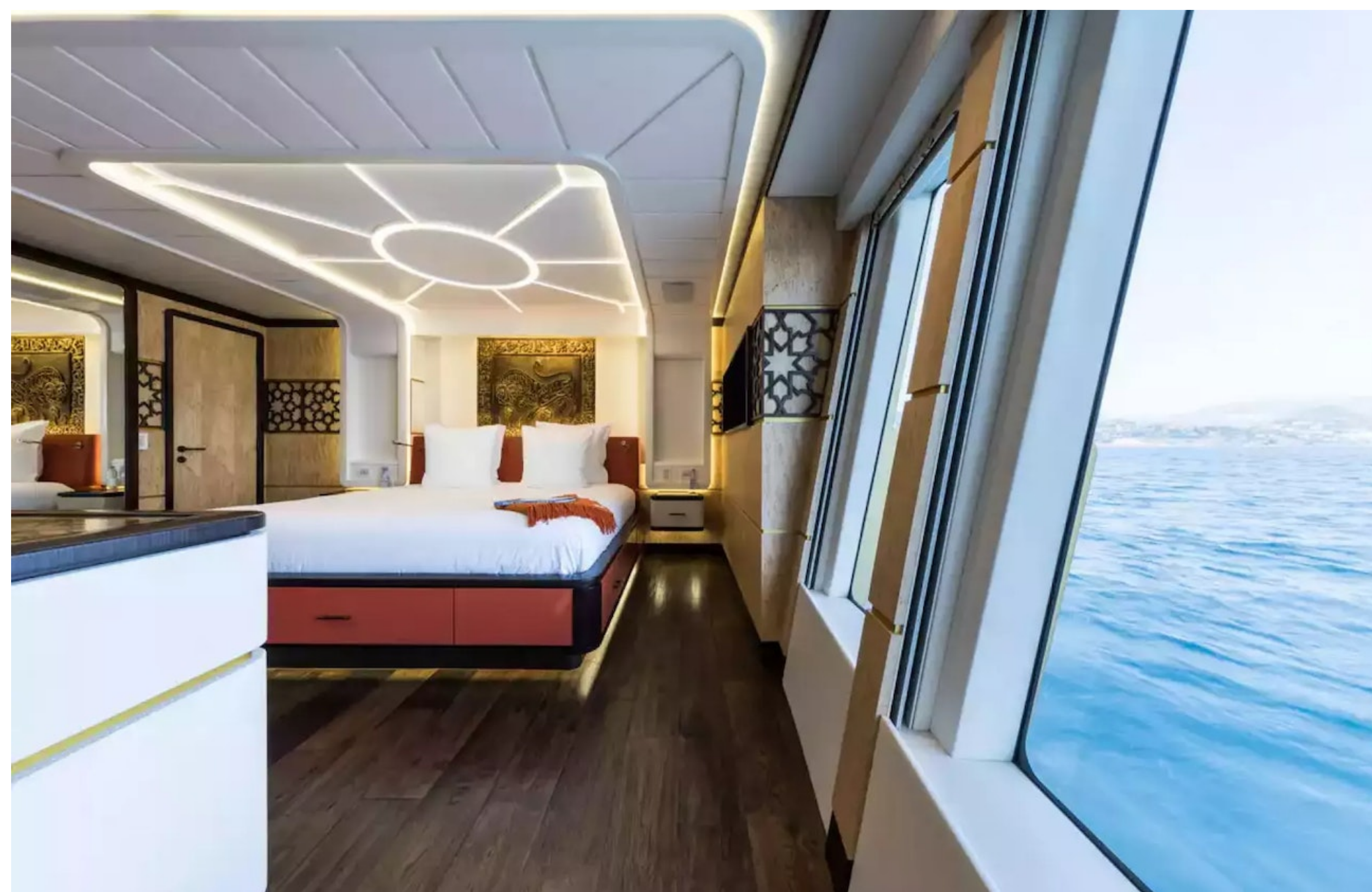






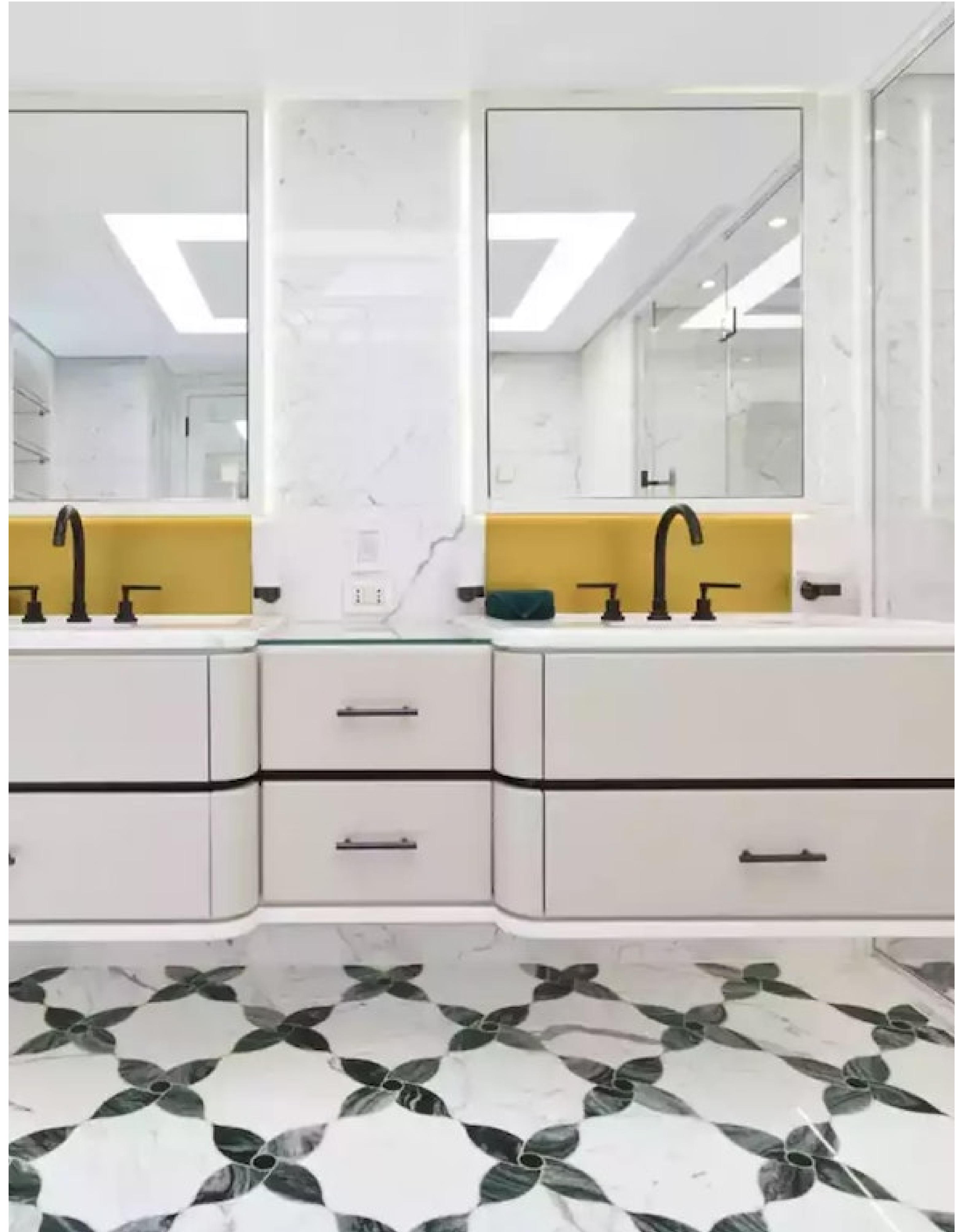






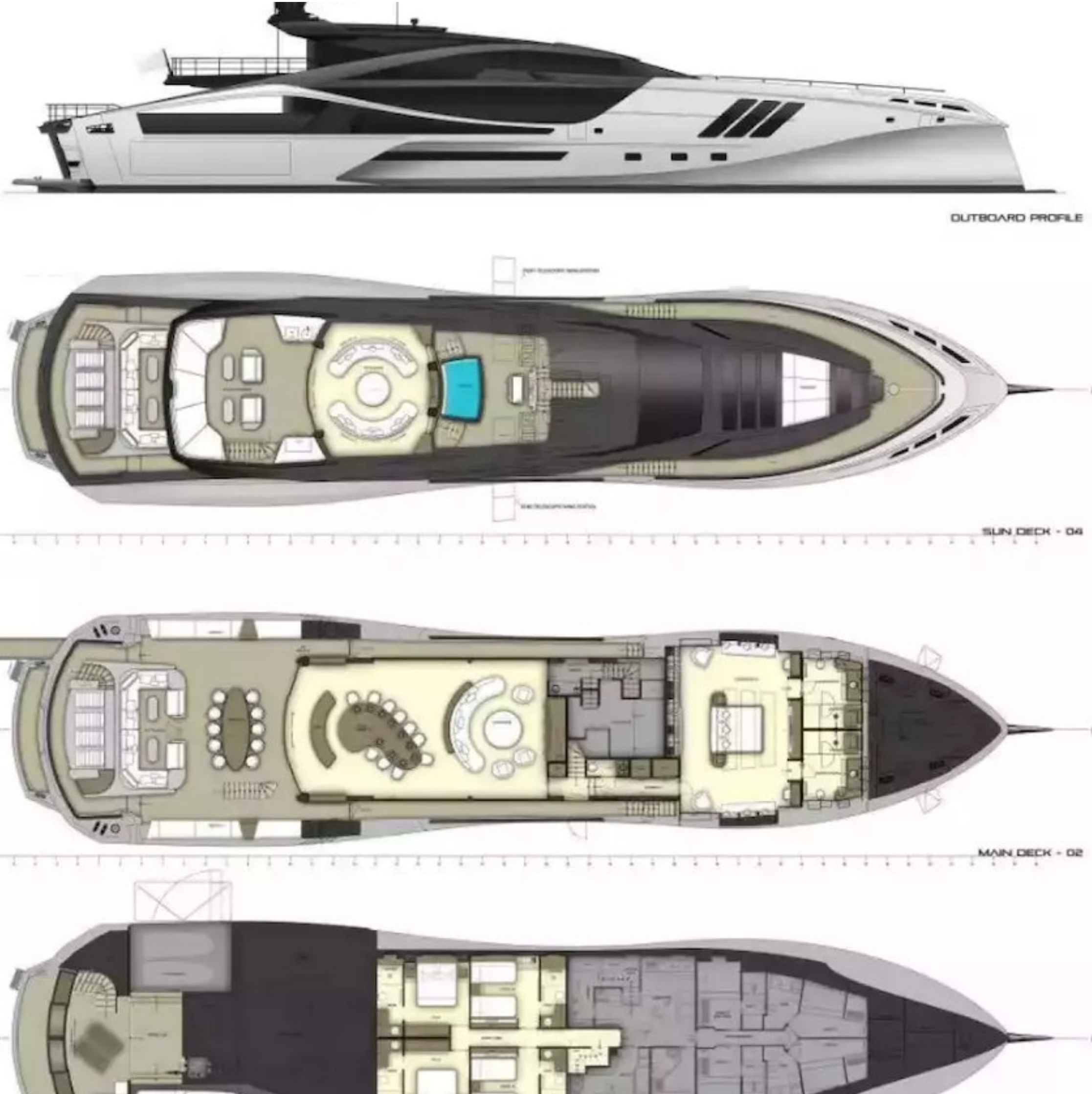














OCEAN*LUX*

Floating expression of *YOU*

www.oceanluxyachts.com

Fort Lauderdale

+1 954 836 9057

Miami

+1 305 686 7051

New York

+1 332 455 0928

Los Angeles

+1 323 986 5808

London

+44 203 962 116

Sydney

+61 272 541 584

Paris

+33 532 63 01 52

Barcelona

+34 931 768 849

Geneva

+41 225 01 74 96

Athens

+30 211 2347975

Moscow

+7 921 8656779