

OCEAN*LUX*

Lady Lena



Length: 52.00m / 170.60ft

Guests: 12

Cabins: 6

Crew: 9

FEATURES

- The yacht is brand new and available for charter since 2020
- It has a top speed of 17 knots and a crew of nine
- The interior design is timeless and classic
- The cabin layout is multi-functional
- The beach club is 80 m2 and flooded with natural light, with twin sea terraces
- The sundeck is 90 m2 and features sunpads, alfresco dining, and an 8-seater jacuzzi
- The main deck has a glass-bottomed endless pool
- Premium spa facilities, including a gym, sauna, and hammam, are available
- The yacht is part of SanLorenzo's award-winning 52 series
- There is a wide range of toys available for guests to use.

CABINS DISTRIBUTION

1	3	2
MASTER	VIP	DOUBLE

PRICE BY SEASON

Summer
From: \$351,000 /week + expenses

Winter
From: \$351,000 /week + expenses

Lady Lena

OCEAN*LUX*

SPECIFICATIONS

Length: 52.00m / 170.60ft

Beam: 9.35m / 30.68ft

Draft: 2.65m / 8.69ft

Cruise speed: 15 knots

Max speed: 17 knots

Built: 2020

Builder: San Lorenzo

Exterior design: Officina Italiana Design

Interior design: San Lorenzo





DESCRIPTION

In 2020, Sanlorenzo delivered the 170.60ft / 52m motor yacht named 'Lady Lena'. Designed by Officina Italiana Design, her interiors are crafted by Sanlorenzo. Lady Lena belongs to Sanlorenzo's award-winning 52Steel series, and the Italian shipyard is accountable for her complete engineering package.

With extensive living spaces and a focus on an alfresco lifestyle, Lady Lena is the perfect yacht for charter guests with refined tastes. Her timeless exterior is marked by clean lines, glazing, and glass bulwarks that contribute to her classic appearance.

Lady Lena's interior design is inspired by traditional Art Nouveau style, boasting a warm and neutral colour palette, intricate wood detailing, and crisp cream furniture. Her layout offers six cabins that can accommodate up to twelve guests, including a full-beam master suite, a VIP stateroom on the upper deck, and four multi-functional cabins on the main deck. Lady Lena can carry up to nine crew members onboard.

The yacht also has a spa area with a sauna, a Hamman, a gym, and a beach club connected to the wellness area. Lady Lena offers a range of water toys and nautical accessories to enhance guests' charter experience, including Seabobs, Water-Skis, Inflatable kayaks, and stand-up Paddleboards. The yacht has one of the most impressive beach clubs on any charter yacht, with a glass bottom pool, fold-out balconies, and a sunbathing area.

Lady Lena's cruising speed is 14 knots, a maximum speed of 16.5 knots, and a range of 4,400nm from her 55,000 liter fuel tanks. With her sophisticated interiors and commitment to outdoor living Lady Lena is a versatile yacht that combines performance and luxury, creating an elegant and unforgettable yachting experience in the Mediterranean.

Whether you're seeking a lively family vacation or a tranquil gathering with friends, Lady Lena offers both, making it the perfect choice for various social occasions.

AMENITIES

Jacuzzi	Stabilizers Underway		Hammam	Deck Jacuzzi		Beach Club
Tender Garage		Sunpads	Wifi	Spa	Air Conditioning	Swimming platform
Sun Deck	At-Anchor Stabilizers			Sauna	BBQ	Massage Room
Foredeck Seating with Table			Swimming Pool		Gym	

TOYS

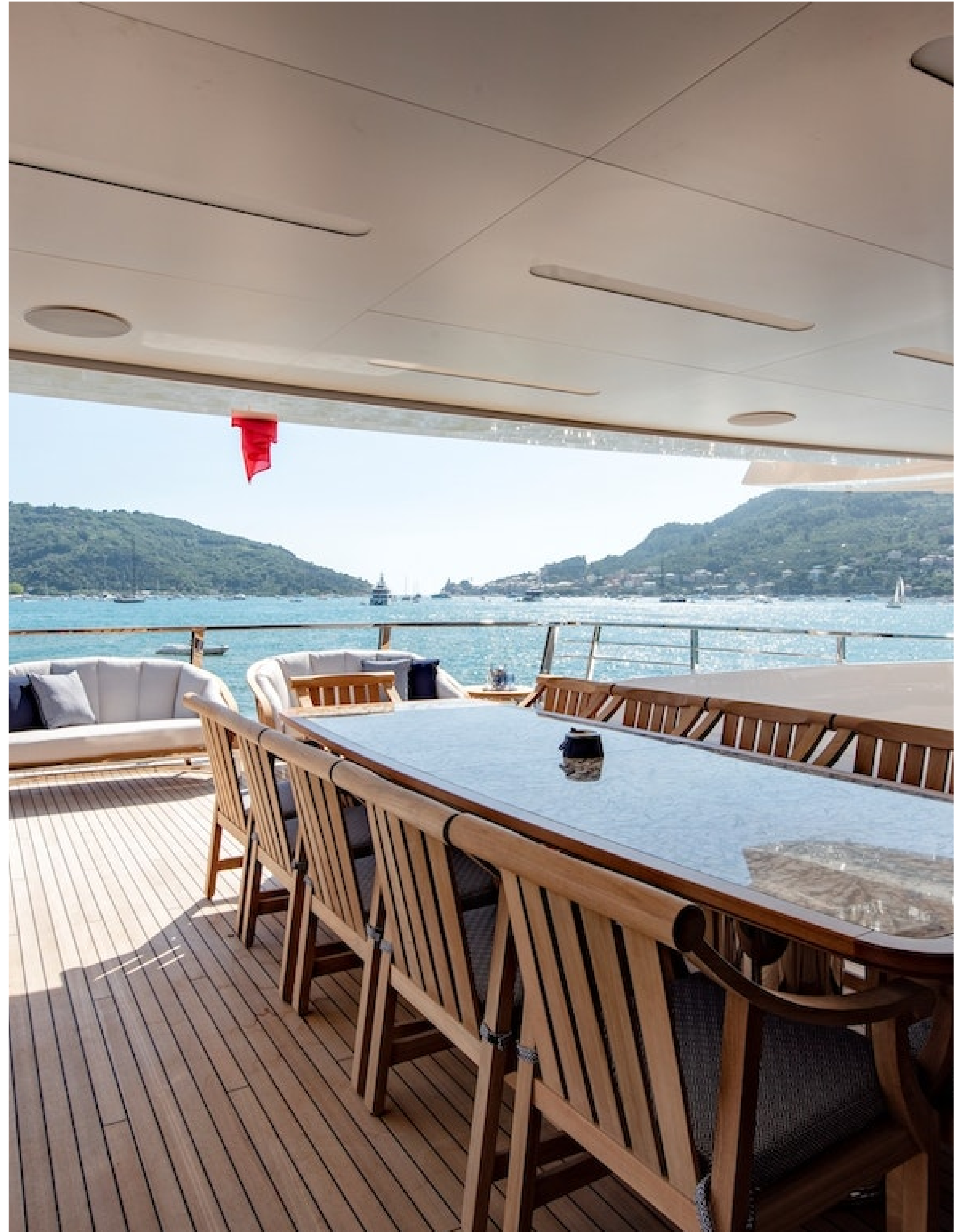
2 x Jet Ski	2 x Seabobs	3 x Towable Toys	1 x Deck - Jobe Airstream 3P	
4 x Wakeboards	2 x Water Skis	2 x Paddleboards	2 x Kayaks	2 x Inflatable toys
2 x Tenders				

For full list of available amenities & toys or price to hire additional equipment please contact us





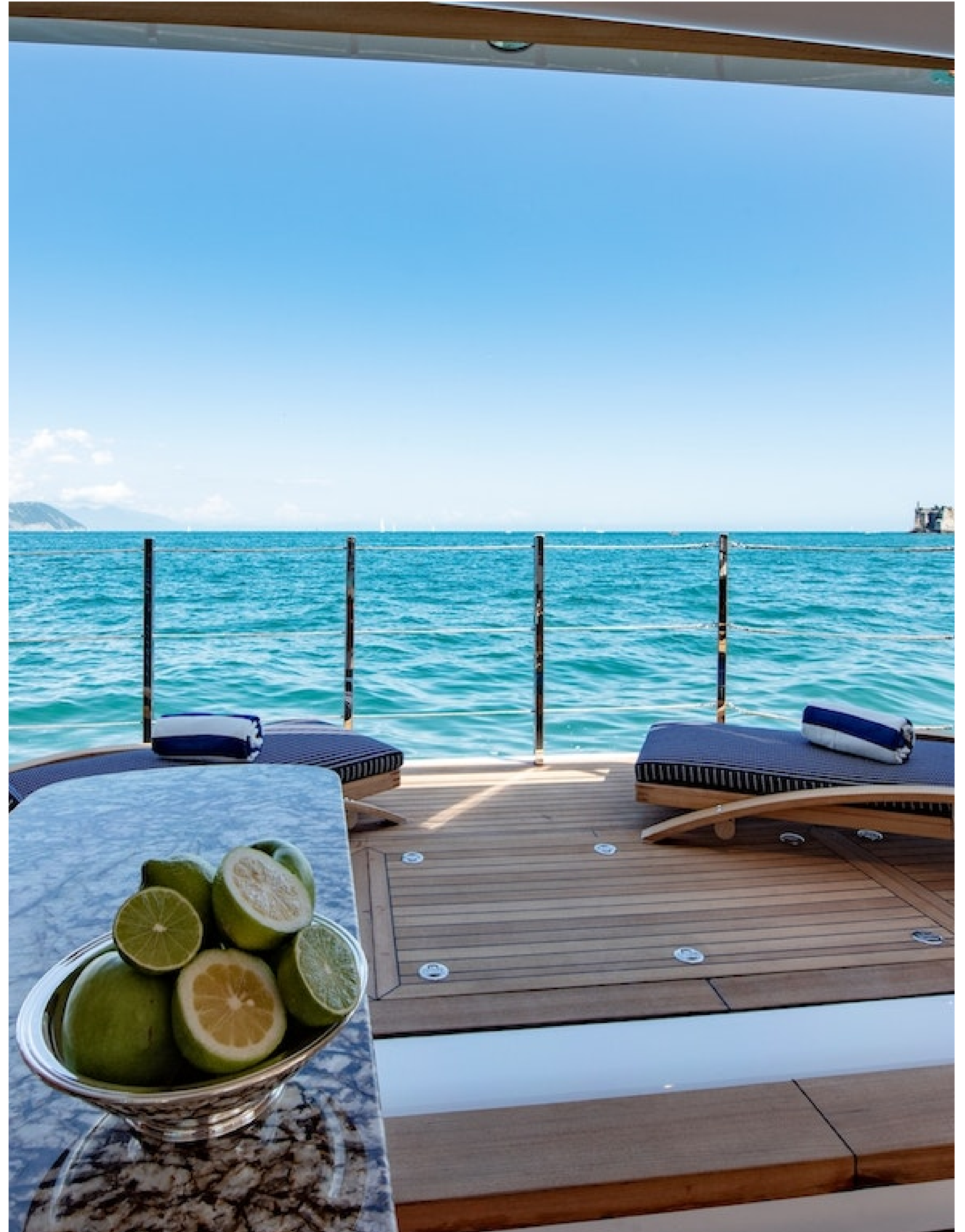










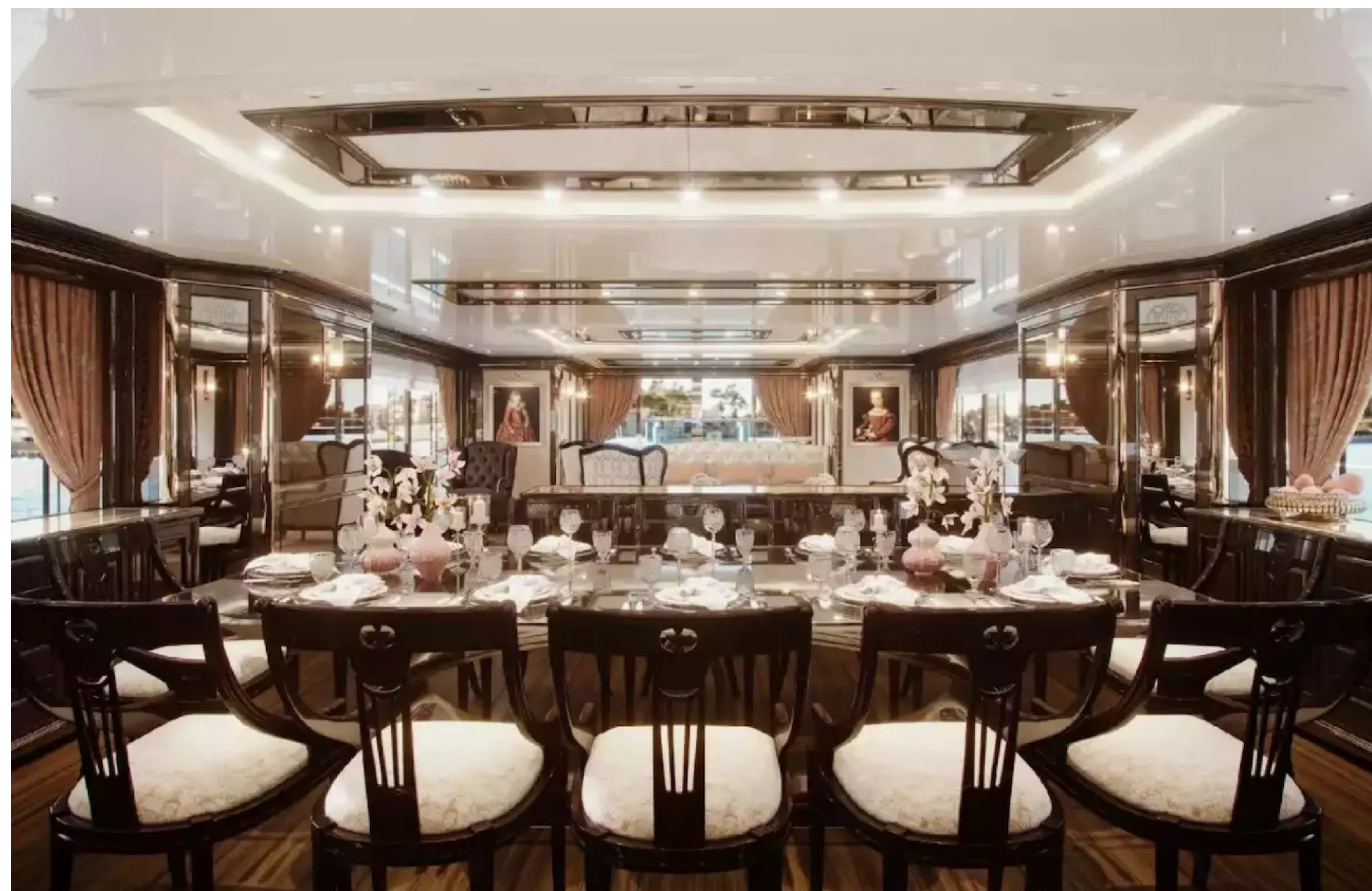




























OCEAN*LUX*

Floating expression of *YOU*

www.oceanluxyachts.com

Fort Lauderdale

+1 954 836 9057

Miami

+1 305 686 7051

New York

+1 332 455 0928

Los Angeles

+1 323 986 5808

London

+44 203 962 116

Sydney

+61 272 541 584

Paris

+33 532 63 01 52

Barcelona

+34 931 768 849

Geneva

+41 225 01 74 96

Athens

+30 211 2347975

Moscow

+7 921 8656779